

AMS Shear

Mobile Shear



Parts Manual - AMS 020-R and AMS 020-NR

Keep this manual in a convenient location so that it is easily accessible for future reference. Contact your Allied Dealer or the Allied Customer Service Department for replacement manuals. Inquiries regarding the content of this manual must include effective date shown on inside cover.

PM577104





Contact Information

3900 Kelley Ave
Cleveland, Ohio 44114
Tel: 216-431-2600
www.alliedcp.com

Fax: 216-431-2601
E-mail: sales@alliedcp.com

Continuous improvement of our products is an Allied policy. The material in this publication, including figures, captions, descriptions, remarks and specifications, describe the product at the time of its printing, and may not reflect the product in the future. When changes become necessary, these will be noted in the table below. Specifications are based on published information at the time of publication. Allied Construction Products, LLC, reserves the right to change, edit, delete or modify the content of this document, including descriptions, illustrations and specifications without prior notification. For product or document updates go to www.alliedcp.com.

Table of revision history for Parts Manual 577104

<u>Effective Date</u>	<u>Page</u>	<u>Summary of Change</u>
2014, Sep	5,13,15,16,24,25	Table 3.3, Fig 576925 Pos 207 (was 206), Pos 1,17 revise specification, Fig 0821-0800 revise view, Table 4.9 Pos 3,4 revise part numbers. Fig 0820-08.00.0 revise view. Table 4.6 Pos 12 change bolt (was 576897)..
2014, Jun	All	Original issue of 577104

Table of Contents

<u>Section</u>	<u>Page</u>
Document Revisions.....	i
Table of Contents.....	ii
List of Figures.....	ii
1.0 Introduction & Scope.....	1
1.1 Purpose of This Manual.....	1
1.2 How To Order Replacement Manuals.....	1
1.3 Related Publications.....	1
2.0 Equipment Identification.....	2
2.1 Serial Number Location.....	2
2.2 Equipment Identification Label.....	2
2.3 Owner’s Record of the Equipment.....	2
3.0 Safety, Identification & Information Labels	3
4.0 Parts – Main & Sub-assemblies	6
4.1 Shear Body Assembly.....	7
4.2 Lower Jaw Assembly.....	9
4.3 Upper Jaw Assembly.....	11
4.4 Subhead & Rotation Assembly.....	13
4.4.2 Swivel Assembly.....	15
4.5 Subhead Assembly	17
4.6 Cylinder Assembly.....	19
4.7 Hydraulic Hose Assembly.....	21
4.8 Hydraulic Connections.....	23
4.9 Hoses Inside Subhead.....	25
4.10 How to Order Spare Parts.....	27
List of Figures	Page
2-1 Equipment Identification.....	2
2-2 Equipment Identification Label.....	2
L1-L13 Safety & Information Labels.....	3
LA & LB Location of Labels On Equipment.....	4

<u>List of Figures</u>	<u>Page</u>
LC Location of Lube Point Labels.....	5
0820-00.00.0 Sub-Assemblies.....	6
0820-01.00.0 Body.....	7
0820-02.00.0 Lower Jaw Blades.....	9
0820-03.00.0 Upper Jaw Assembly.....	11
0820-02 & 03 Blade Kit.....	13
0820-04.00.0 Subhead & Rotation (R).....	15
0933-05.00.0 Hydraulic Swivel (R).....	17
0820- Subhead (NR).....	19
0820-06.00.0 Hydraulic Cylinder.....	21
0820-07 & 0820-07 Hoses for Cylinder.....	23
0820-08 & 0821-08 Hydraulic Connections...	25
0820-09 Hyd Connections Inside Subhead (R)	27

<u>List of Tables</u>	<u>Page</u>
1.1 About This Manual.....	1
3.1 Safety, Identification & Information Labels	3
3.2 Ordering Information For Labels.....	5
3.3 Lubrication Points.....	5
4.1 Main and Sub-assemblies.....	6
4.2 Shear Body Assembly.....	8
4.3 Lower Jaw Assembly.....	10
4.4 Upper Jaw Assembly.....	12
4.5 Blade Kit Complete.....	14
4.6 Subhead & Rotation Assembly.....	16
4.6.1 Hydraulic Swivel Assembly.....	18
4.7 Subhead – Non-Rotation Type.....	20
4.8 Cylinder Assembly.....	22
4.9 Hoses for Cylinder (R).....	24
4.10 Hoses for Cylinder (NR).....	24
4.11 Hydraulic Connections (R).....	26
4.12 Hydraulic Connections (NR).....	26
4.13 Hydraulic Connections Inside Subhead...	28

1.0 Introduction and Scope

1.1 Purpose and Scope of This Manual

The material in this manual has been prepared in support of the product named in Table 1.1. It's intended solely for use with the expressed model(s) and may not be suitable for unnamed models.

The publication identified in Table 1.1 was created solely for information purposes and should not be considered all-inclusive. If further information is required, contact your local Allied dealer or the Allied Customer Service Department.

Parts Manuals do not include safety precautions or operating procedures. Figures depict views that are intended for parts identification and not for purposes of repair or service of the product. Figures, captions, descriptions and tables, presented in this manual, may show equipment that is optional.

How to use this Manual:

Assembly components are identified with the aid of figures, captions, item key, part name and quantity. When necessary, remarks and specifications further enhance the description of the part or clarify its use (or non-use) with select serial numbers.

To assist you, a parts order form is provided at the back of this manual

Prior to ordering parts, confirm that the information recorded on the equipment's identification label corresponds with Table 1.1. For the location of this label, refer to Section 2.0 of this manual.

Table 1.1 About This Manual



Document ID.	PM577104
Category	Spare / Replacement Parts
Current Status	See Inside Cover
Product Name:	Mobile Scrap Shear
Applicable Model[s]:	AMS 20-R, AMS 20-NR
Years of Manufacture:	Begin 2014
Inquiries regarding this manual must include the effective date shown on inside cover	

The content of this document has been reviewed for accuracy. Allied Construction Products, LLC has endeavored to deliver the highest degree of accuracy

possible and has made every effort to provide information as complete as possible for this document. However, continuous improvement of our products is an Allied policy. The material in this publication, including descriptions, illustrations and specifications, describes the product at the time of its printing, and may not reflect the product in the future. Changes made to the manual's content are noted on the inside cover.

1.2 How To Order Replacement Publications

This manual is an integral part of this product. Keep it in a convenient location so that it is easily accessible for future reference.

Replacement manuals may be ordered by contacting your Allied dealer service center. These manuals may also be viewed and downloaded at: www.alliedcp.com

1.3 Related Publications

Allied Construction Products, LLC offers the following publications for the product identified in Table 1.1.

Safety, Operation & Maintenance Manual 577105

For use with Models AMS20, AMS30

Safety, Operation & Maintenance Manuals are prepared to assist the operator and maintenance personnel with the information necessary for the safe and proper use of the Allied equipment.

Content included in the Safety, Operation & Maintenance Manual:

- Safety Information
- Equipment Identification
- Technical Data (Weight & dimensions)
- Installation and Set-up
- Pre-Operation Inspection
- How to Operate the Equipment
- Maintenance Schedule
- Lubrication
- Cutting Blades – Inspection / Changing
- Basic Troubleshooting Guidelines
- Transporting, Removal, Lifting, & Storage

2.0 Equipment Identification

2.1 Serial Number Location

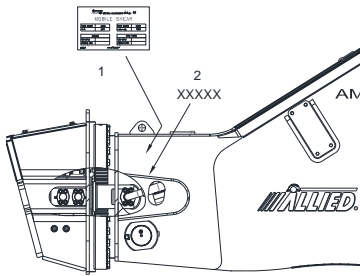


Fig 2-1 Equipment Identification

Refer to Figure 2-1. The Serial Number assigned to this equipment is found in the following locations:

1. The Equipment Identification Label
2. Stamped on the guard.

2.2 Equipment Identification Tag

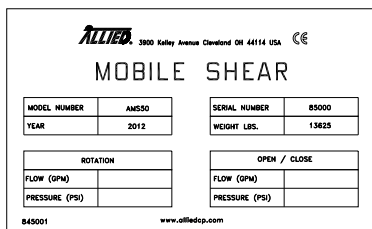


Fig 2-2 Equipment Identification Label

The Equipment Identification Tag is affixed to the housing. It provides the following information:

- Manufacturer's name
- Address
- Product name
- Model number
- Serial number
- Year of manufacture
- Weight

Confirm that the information contained on the Tag corresponds with the information provided in Section 1, Table 1.1.

2.3 Owner's Record of the Equipment

Your local Allied dealer requires complete information about the equipment to better assist you with questions regarding parts, warranty, operation, maintenance, or repair.

- Record the equipment's serial number to the space provided below. This information may be obtained from the Equipment Identification Tag. Refer to Fig 2-1 for the location of the tag.
- Indicate the date in which the Allied equipment was placed into service.
- Indicate the date in which the Warranty Registration form was completed and returned to Allied.

Product Name: Mobile Scrap Shear

Series: AMS

Model / Part No. AMS 20-R / 576890

Model / Part No. AMS 20-NR / 576891

Serial Number: _____

In Service Date: _____

Registration Date: _____

Model AMS 20-R / AMS 20-NR

A	Allied
M	Mobile
S	Shear
20	Carrier Weight (t-metric)
R	Rotation
NR	Non-Rotation



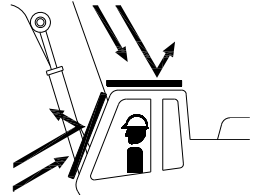


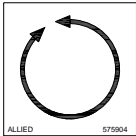
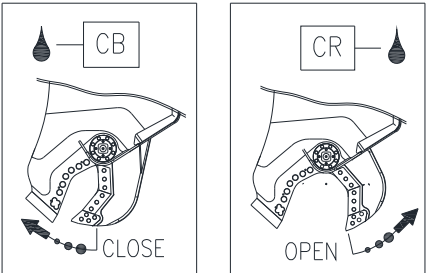
3.0 Safety, Identification and Information Labels

3.1 Safety, Identification and Information Labels

Information labels affixed to the Allied equipment include safety warnings, identification and instructions important to operation and service. Table 3.1 identifies and describes each label.


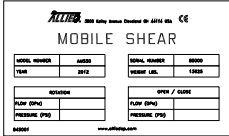
Words and illustrations must be readable. Keep all safety labels clean. Replace damaged or missing labels before operating this equipment. Refer to Table 3.2 for ordering information. Refer to Figures "L-A", "L-B" and "L-C" for their position on the equipment.

Table 3.1 Safety and Information Labels

<u>Fig.</u>	<u>Label</u>	<u>Description</u>
L1		Safety Alert Symbol / Read the Manual - Directs personnel to the manual for safety-related precautions and further instructions regarding operation and maintenance procedures.
L2		Stay Clear – Alerts personnel and by-standers to maintain a safe distance from the work tool during operation.
L3		Flying Debris Hazard – Alerts of the need for a protective guard to shield the operator from debris generated when the work tool is in operation.
L4		Lift Point – Marks lift points for safe handling of the work tool.
L5		Lubrication Point – Pictogram of instruction manual and grease gun is used to identify lubrication points. Read the manual(s) for application instructions, grease type and re-lubrication schedule.
L6		Rotation – Marks the location of hydraulic connection port for motor rotation. Pictogram indicates rotation is bi-directional 360°.
L7,L8		Hydraulic Connections - Oil drop next to either CB or CR connection port. Oil flow to CB port => JAW CLOSE. Oil flow to CR port => JAW OPEN.

3.0 Safety, Identification and Information Labels

Table 3.1 Safety, Identification and Information Labels [cont'd]

Figure	Label	Description
L9		ALLIED Logo – The Allied brand identifier and is a registered trademark of Allied Construction Products, LLC.
L10	AMS20	Model Identification – Identifies the Model of the Allied Mobile Shear
L11		Equipment ID - Contains identifying information about the equipment, including: Product name, model number, serial number, company name and address.

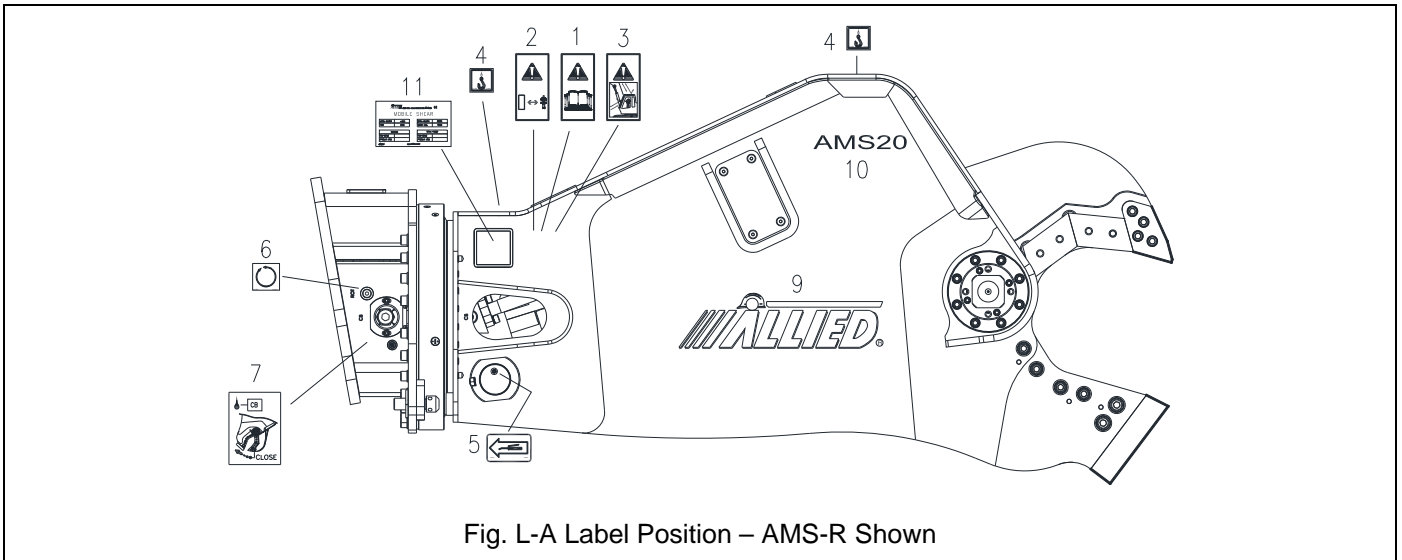


Fig. L-A Label Position – AMS-R Shown

Unless otherwise noted, parts are common to both AMS-R and AMS-NR.

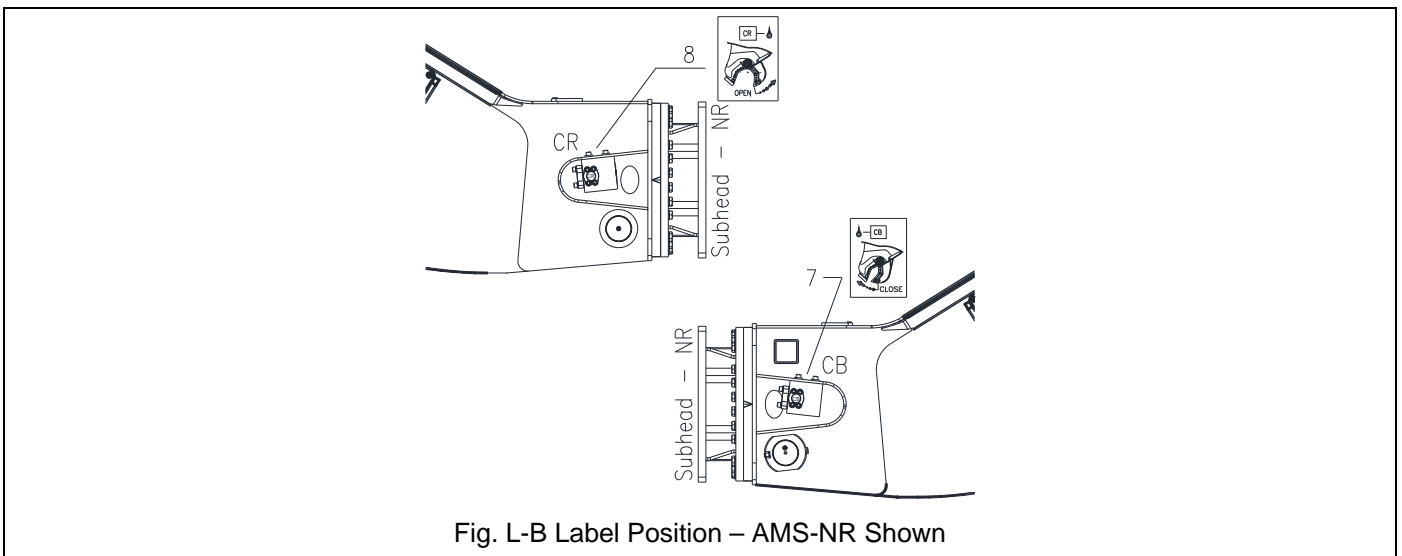


Fig. L-B Label Position – AMS-NR Shown

3.0 Safety, Identification and Information Labels

Table 3.2 Lubrication Points

<u>Pos</u>	<u>Part Name</u>	<u>Qty</u>	<u>Pos</u>	<u>Part Name</u>	<u>Qty</u>
A*	Gear, slewing ring	2	D	Auto-guide/Puck	1
B*	Bearing, slewing ring	4	E	Main shaft	2
C	Cylinder pin (bottom end)	2	F	Cylinder pin (rod eye)	1

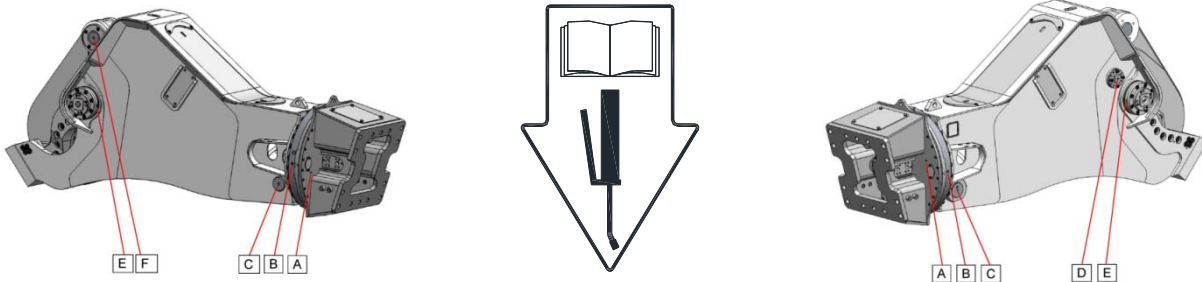


Fig. L-C Lubrication Points*

*A & B lubrication points are not applicable to AMS-NR.

Table 3.3 Safety, Identification & Information Labels

<u>Pos</u>	<u>Part Name</u>	<u>Part No.</u>	<u>Description / Specification</u>	<u>Qty</u>	<u>Note</u>
---	Label Set	577281	AMS 20-R Includes Items 1-10	1	(R)
---	Label Set	577282	AMS 20-NR Includes Items 1-5,7-10	1	(NR)
1	Label	676984	Pictogram, Read Instructions	2	
2	Label	840156	Pictogram, Stay Clear	2	
3	Label	575948	Pictogram, Guards Installed	2	
4	Label	676982	Pictogram, Lift Point	3	
5	Label	676985	Pictogram, Lube Point	12,(6)	3
6	Label	575904	Pictogram, Rotation-Bi-directional 360°	2	4
7	Label	576602	(CR) Cylinder Rod => Jaw Open	1	
8	Label	576603	(CB) Cylinder Barrel => Jaw Close	1	
9	Label	676656	Allied Logo	2	
10	Label	577283	Model AMS 20	2	
11	Label	845001	Equipment Identification	1	1

Unless otherwise noted, parts are common to both AMS-R and AMS-NR.

1: Not Included in Label Set

2: Apply label to LH & RH side of the subhead while observing either the (CB) or (CR) hydraulic port.

3: AMS-NR Lube Label reduced to (Qty-6).

4: Label not included in (NR) type label set.

AMS-R (R) => Rotation, AMS-NR (NR) => Non-Rotation

Cylinder Barrel (CB) => Jaw Close, Cylinder Rod (CR) => Jaw Open

4.0 Spare Parts Identification

Fig. 0820-00.00.0 Main Assembly AMS 20-R

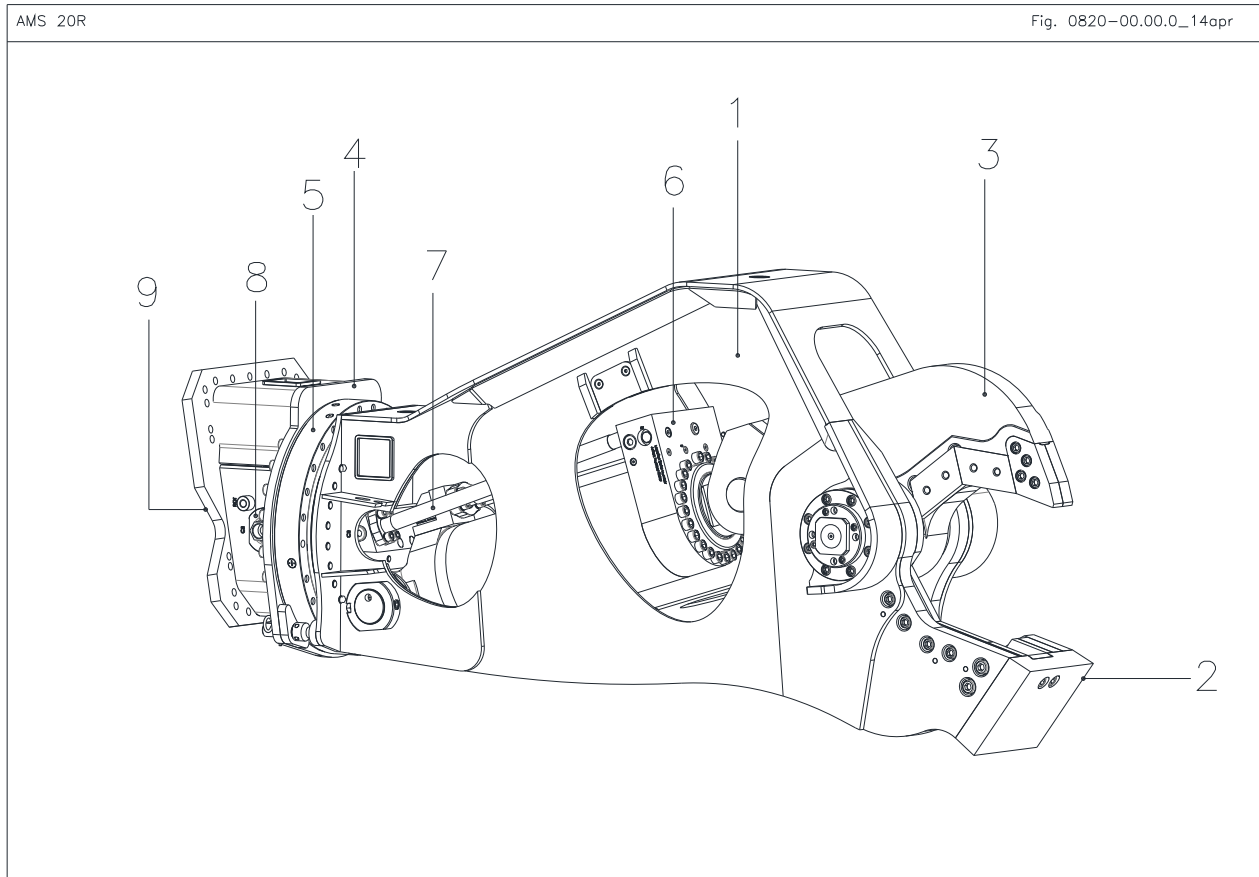


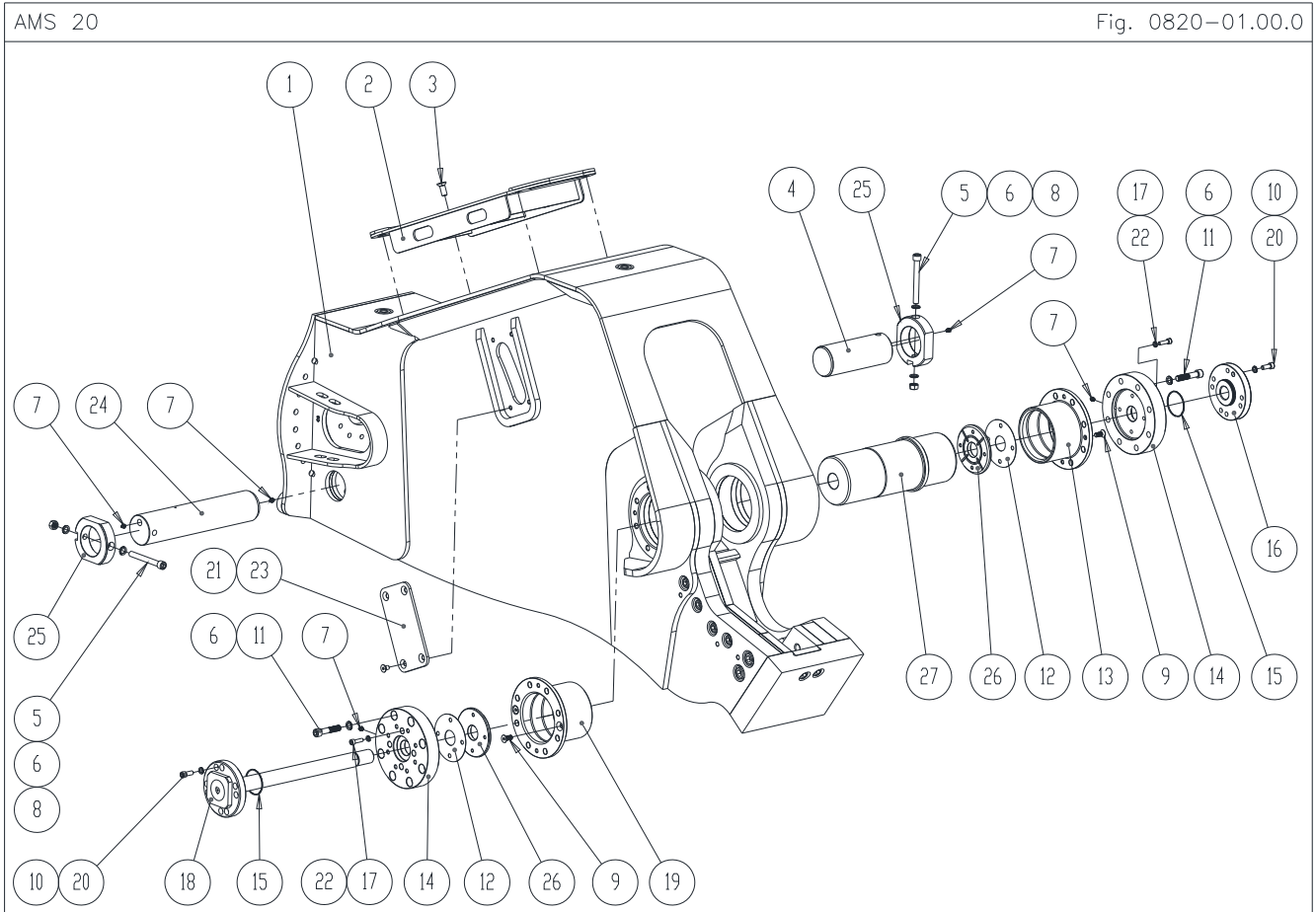
Table 4.1 Main Assembly and Sub-Assemblies

Pos	Name	Figure	Scope of Delivery
---	AMS 20-R	576890*	*Delivered complete with: ✓ Assembled, tested, painted & decaled ✓ Safety, Operation & Maintenance Manual ✓ Parts Manual ✓ Bolt Set for Mounting Bracket Optional accessories – Order separately Hoses – Supply, Return, Rotation (R) Mounting Bracket
---	AMS 20-NR	576891*	
1	Shear body	0820-01.00.0	
2	Jaw - Lower	0820-02.00.0	
3	Jaw - Upper	0820-03.00.0	
4	Subhead (R)	0820-04.00.0	
5	Hydraulic Swivel (R)	0933-05.00.0	
6	Hydraulic Cylinder	0820-06.00.0	
7	Hydraulic Hoses (R)	0820-07.00.0	
8	Hydraulic Connectors (R)	0820-08.00.0	
9	Hyd. Conn Inside Subhead (R)	0820-09.00.0	

Unless otherwise noted, parts are common to both AMS-R and AMS-NR.
 AMS-R (R) => Rotation, AMS-NR (NR) => Non-Rotation
 Cylinder Barrel (CB) => Jaw Close, Cylinder Rod (CR) => Jaw Open

4.0 Spare Parts Identification

Fig. 0820-01.00.0 AMS 20 Body Assembly



Unless otherwise noted, parts are common to both AMS-R and AMS-NR.
 AMS-R (R) => Rotation, AMS-NR (NR) => Non-Rotation
 Cylinder Barrel (CB) => Jaw Close, Cylinder Rod (CR) => Jaw Open

4.0 Spare Parts Identification

Table 4.2 Body Assembly.

Pos	Part Name	Part No.	Specification	Qty	Note
1	Body	PR08202000		1	
2	Main Cover Stick	PR08200290		1	
3	FL Head Countersunk Socket Bolt	576890	M16 x 40 DIN 7991-10.9	4	
4	Cylinder pin	PR08200220		1	
5	SH Bolt	576899	M16 x 140 DIN 912-12.9	2	
6	NORD-LOCK washer	90597	NL 16	20	
7	Grease Fitting	90201	G1/8'	5	
8	Hex Nut	91000	M16 DIN 934-10	2	
9	FL Head Countersunk Socket Bolt	575818	M12 x 30 DIN 7991-10.9	4	
10	NORD-LOCK washer	91012	NL 12	8	
11	SH Bolt	678575	M16 x 80 DIN 912-12.9	16	
12	Shim Set Pivot Group	PR08200340		1	
13	Main bearing L.H.	PR08200170		1	
14	End Cap	PR08200150		2	
15	O-Ring	ZZOR07400390	ø74x3 NBR 90	2	
16	Tie Rod Nut	PR08200180		1	
17	SH Bolt	913043	M10 X 35 DIN 912-12.9	8	
18	WLDT Tie Rod	PR08200080		1	
19	Main bearing R.H.	PR08200030		1	
20	SH Bolt	941213	M12 x 30 DIN 912-12.9	8	
21	FL Head Countersunk Socket Bolt	576900	M12 x 20 DIN 7991-10.9	8	
22	NORD-LOCK washer	91037	NL 10	2	
23	Side Cover	PR08200210		2	
24	Rear Pin	PR08200010		1	
25	Pin Keeper	PR08200020		2	
26	Thrust Bearing	PR08200160		2	
27	Main shaft	PR08200070		1	1

1. Non-serviceable item. Contact Allied.

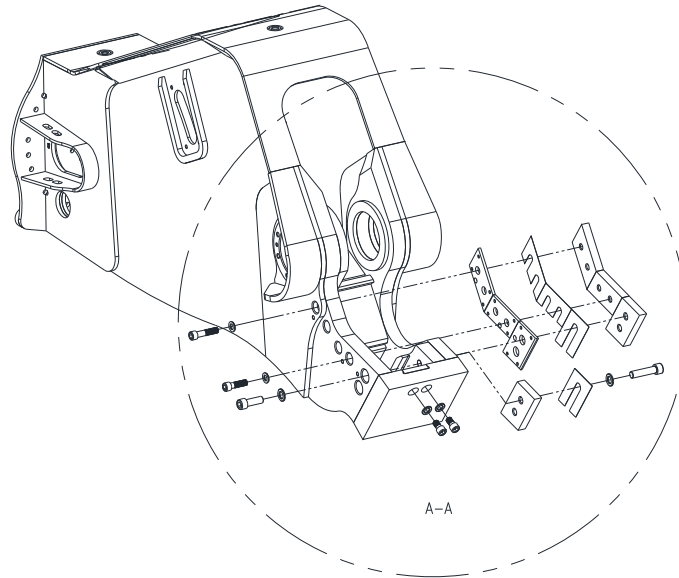
Unless otherwise noted, parts are common to both AMS-R and AMS-NR.

AMS-R (R) => Rotation, AMS-NR (NR) => Non-Rotation

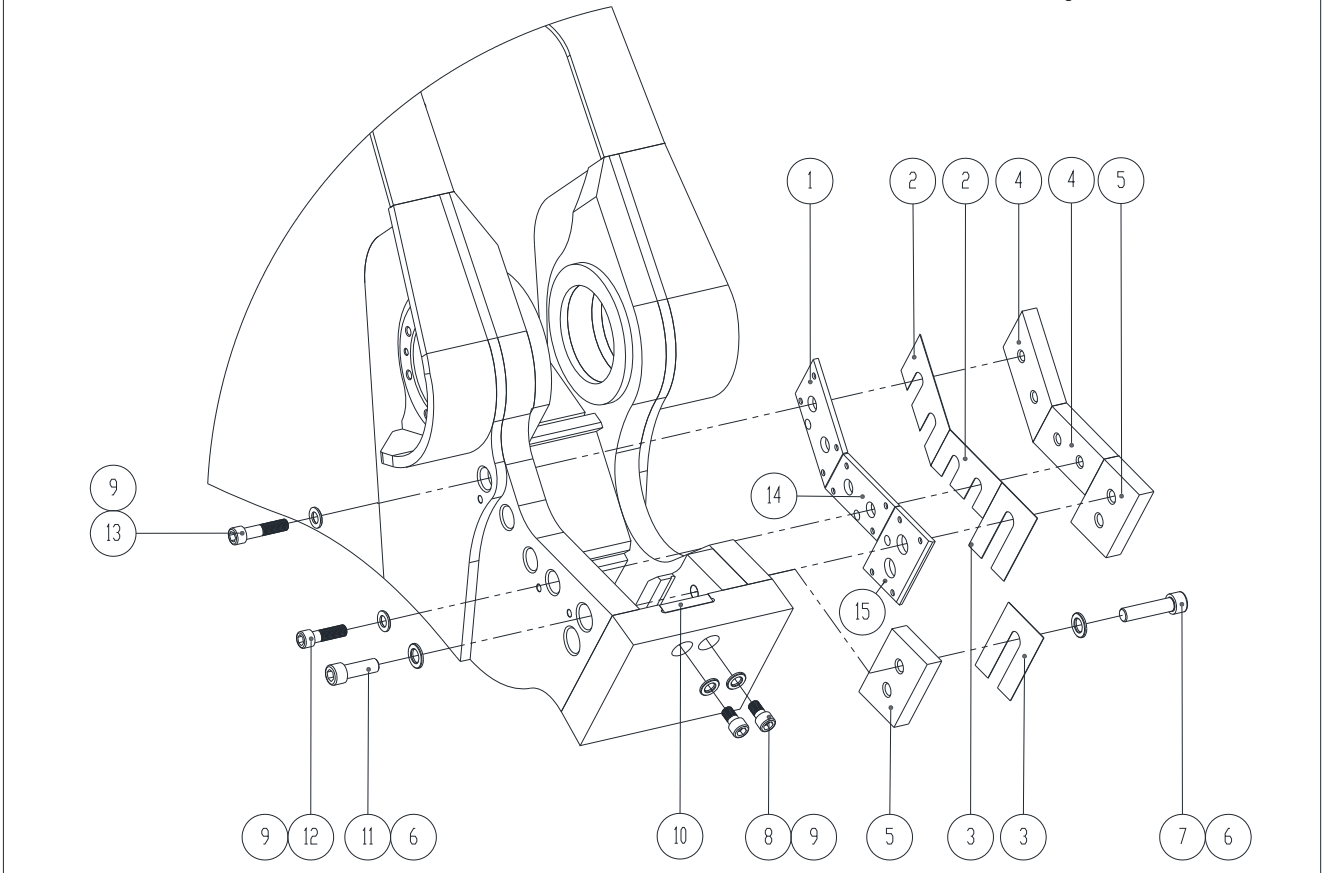
Cylinder Barrel (CB) => Jaw Close, Cylinder Rod (CR) => Jaw Open

4.0 Spare Parts Identification

Fig. 0820-02.00.0 Lower Jaw Assembly



AMS 20 Detail A-A Fig. 0820-02.00.0



Unless otherwise noted, parts are common to both AMS-R and AMS-NR.
 AMS-R (R) => Rotation, AMS-NR (NR) => Non-Rotation
 Cylinder Barrel (CB) => Jaw Close, Cylinder Rod (CR) => Jaw Open

4.0 Spare Parts Identification

Table 4.3 Lower Jaw Blades

Pos	Part Name	Part No.	Specification	Qty	Note
1	Adjustment Plate Lower Blade	PR08200230	<i>serial number specific</i>	1	2
2	Shim Set Lower Blade	PR08200440		1	
3	Shim Set Guide Blade	PR08200490		1	
4	Upper / Lower Blade	PR08200040		2	
5	Guide Blade Lower	PR08200100		2	
6	SH Bolt	576060	M24 x 100 DIN 912-12.9	2	
7	FL HS Washer	90511	M24 DIN 6916	4	
8	SH Bolt	678742	M20 x 35 DIN 912-12.9	2	
9	FL HS Washer	91138	M20 DIN 6916	6	
10	Razor Blade	PR08200110		1	
11	SH Bolt	900009	M24 x 70	2	
12	SH Bolt	575843	M20 x 70	3	
13	SH Bolt	900005	M20 x 90	1	
14	Adjustment plate Lower Blade	PR08200240	<i>serial number specific</i>	1	2
15	Adjustment plate Guide Blade	PR08200250	<i>serial number specific</i>	1	2

1. Blade kit includes all blades and hardware. See Table 4.5.

2. Adjustment plates not included in blade kit. Adjustment plates are serial number specific. Contact Allied.

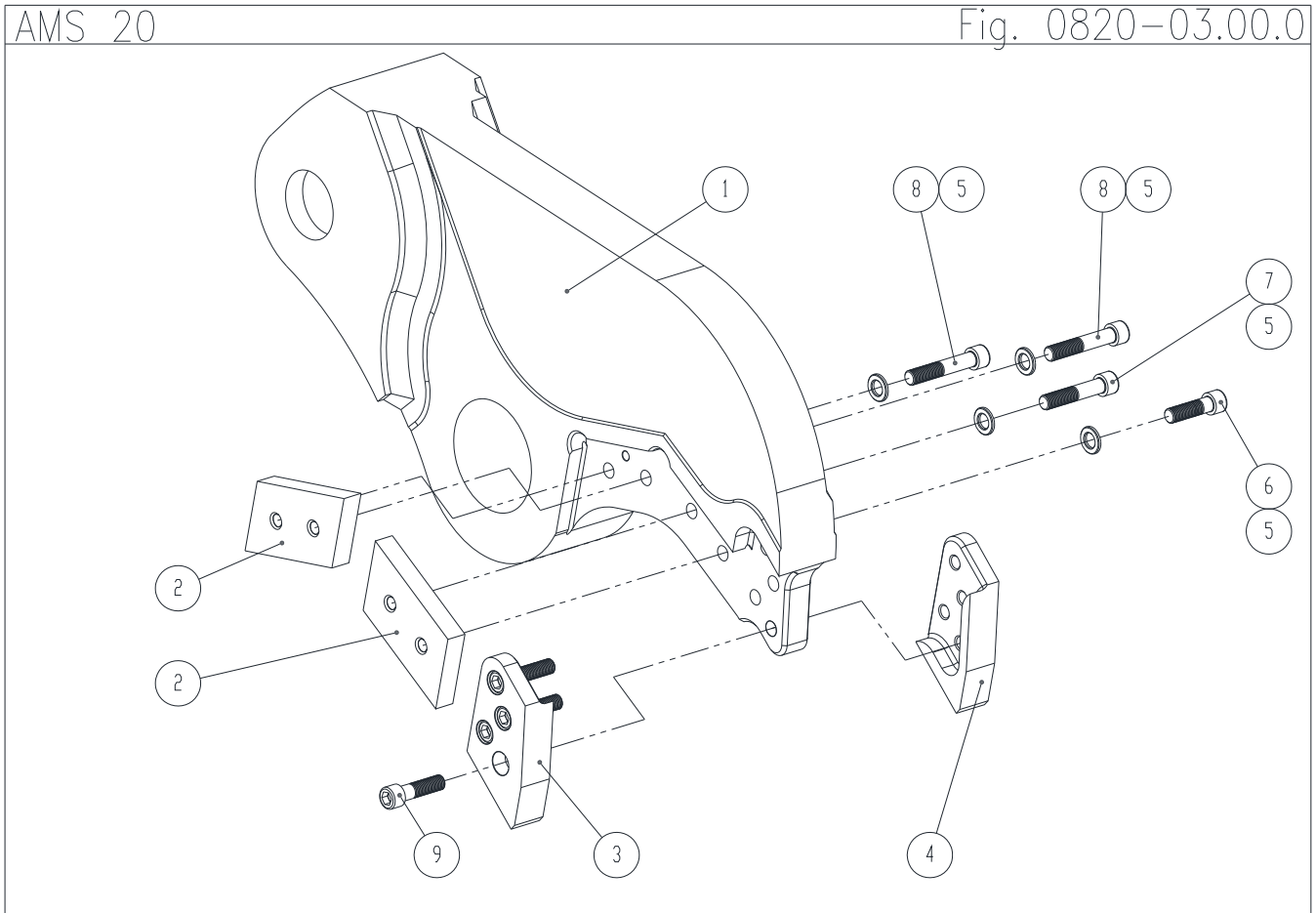
Unless otherwise noted, parts are common to both AMS-R and AMS-NR.

AMS-R (R) => Rotation, AMS-NR (NR) => Non-Rotation

Cylinder Barrel (CB) => Jaw Close, Cylinder Rod (CR) => Jaw Open

4.0 Spare Parts Identification

Fig. 0820-03.00.0 Upper Jaw Assembly.



Unless otherwise noted, parts are common to both AMS-R and AMS-NR.
 AMS-R (R) => Rotation, AMS-NR (NR) => Non-Rotation
 Cylinder Barrel (CB) => Jaw Close, Cylinder Rod (CR) => Jaw Open

4.0 Spare Parts Identification

Table 4.4 Upper Jaw Assembly

<u>Pos</u>	<u>Part Name</u>	<u>Part No.</u>	<u>Specification</u>	<u>Qty</u>	<u>Note</u>
1	Upper Jaw	PR0820500A		1	
2	Blade Upper / Lower	PR08200040		2	
3	Blade Tip L.H.	PR08200050		1	
4	Blade Tip R.H.	PR08200060		1	
5	FL HS Washer	91138	M20 DIN 6916	4	
6	SH Bolt	575843	M20 x 70 DIN 912-12.9	1	
7	SH Bolt	576894	M20 x 100 DIN 912-12.9	1	
8	SH Bolt	576895	M20 x 110 DIN 912-12.9	2	
9	SH Bolt	576896	M20 x 75 DIN 912-12.9	4	

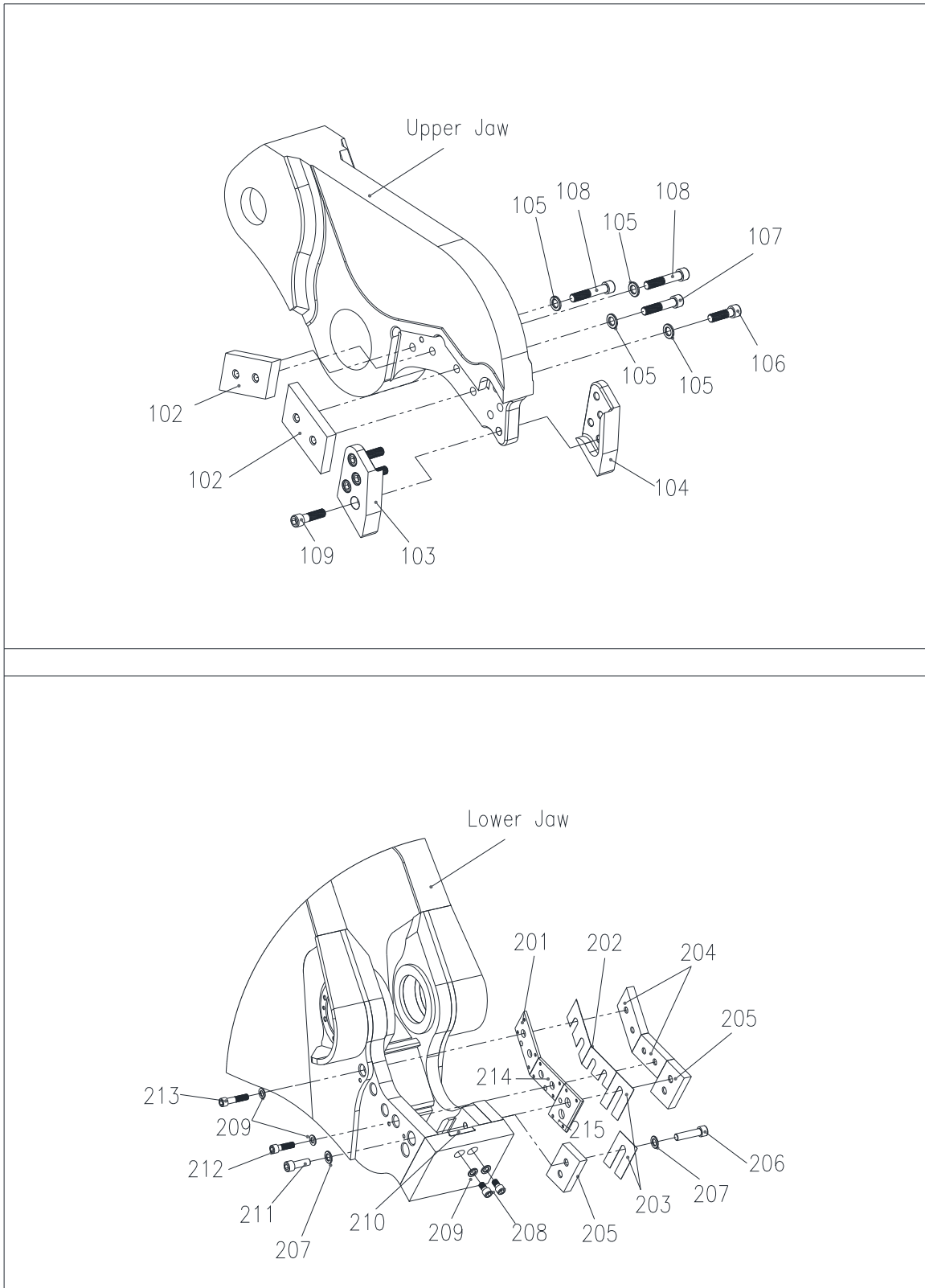
Unless otherwise noted, parts are common to both AMS-R and AMS-NR.

AMS-R (R) => Rotation, AMS-NR (NR) => Non-Rotation

Cylinder Barrel (CB) => Jaw Close, Cylinder Rod (CR) => Jaw Open

4.0 Spare Parts Identification

Fig. 576925 Blade Kit



4.0 Spare Parts Identification

Table 4.5 Blade Kit

<u>Pos</u>	<u>Part Name</u>	<u>Part No.</u>	<u>Specification</u>	<u>Qty</u>	<u>Note</u>
---	Blade Kit	576925		1	1, 2
102	Blade Upper / Lower	PR08200040		2	
103	Blade Tip L.H.	PR08200050		1	
104	Blade Tip R.H.	PR08200060		1	
105	FL HS Washer	91138	M20 DIN 6916	4	
106	SH Bolt	575843	M20 x 70 DIN 912-12.9	1	
107	SH Bolt	576894	M20 x 100 DIN 912-12.9	1	
108	SH Bolt	576895	M20 x 110 DIN 912-12.9	2	
109	SH Bolt	576896	M20 x 75 DIN 912-12.9	4	
201	Adjustment plate Lower Blade	---	<i>serial number specific</i>	---	2
202	Shim Set Lower Blade	PR08200440		1	
203	Shim Set Guide Blade	PR08200490		1	
204	Upper / Lower Blade	PR08200040		2	
205	Guide Blade Lower	PR08200100		2	
206	SH Bolt	576060	M24 x 100 DIN 912-12.9	2	
207	FL HS Washer	90511	M24 DIN 6916	4	
208	SH Bolt	678742	M20 x 35 DIN 912-12.9	2	
209	FL HS Washer	91138	M20 DIN 6916	6	
210	Razor Blade	PR08200110		1	
211	SH Bolt	900009	M24 x 70	2	
212	SH Bolt	575843	M20 x 70	3	
213	SH Bolt	900005	M20 x 90	1	
214	Adjustment plate Lower Blade	---	<i>serial number specific</i>	---	2
215	Adjustment plate Guide Blade	---	<i>serial number specific</i>	---	2

1. Blade kit includes all blades and hardware

2. Adjustment plates 201, 214, 215 not included in blade kit. Adjustment plates are serial number specific. Contact Allied.

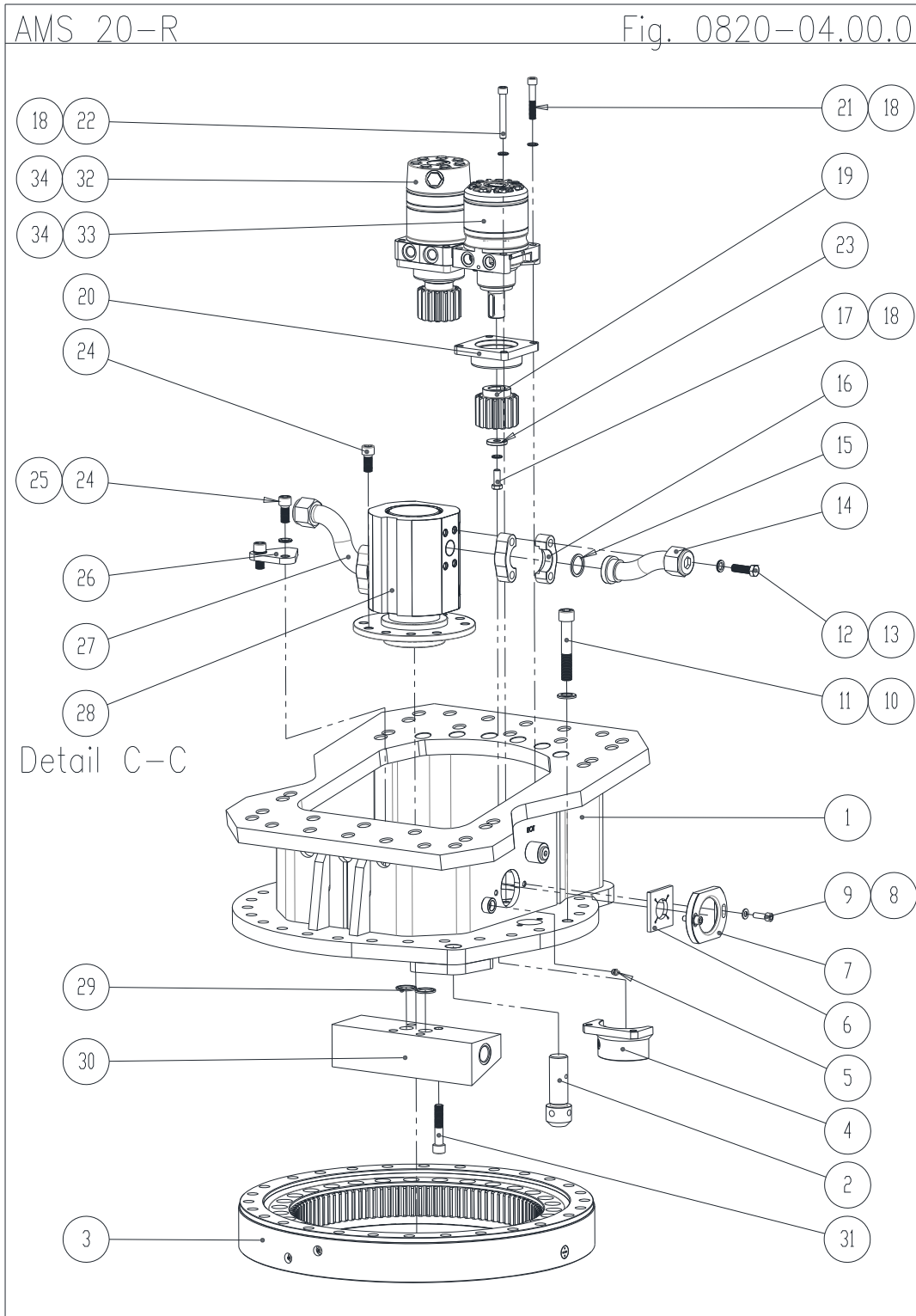
Unless otherwise noted, parts are common to both AMS-R and AMS-NR.

AMS-R (R) => Rotation, AMS-NR (NR) => Non-Rotation

Cylinder Barrel (CB) => Jaw Close, Cylinder Rod (CR) => Jaw Open

4.0 Spare Parts Identification

Fig. 0820-04000 Subhead and Rotation Assembly. Figure is applicable to (R).



Unless otherwise noted, parts are common to both AMS-R and AMS-NR.
 AMS-R (R) => Rotation, AMS-NR (NR) => Non-Rotation
 Cylinder Barrel (CB) => Jaw Close, Cylinder Rod (CR) => Jaw Open

4.0 Spare Parts Identification

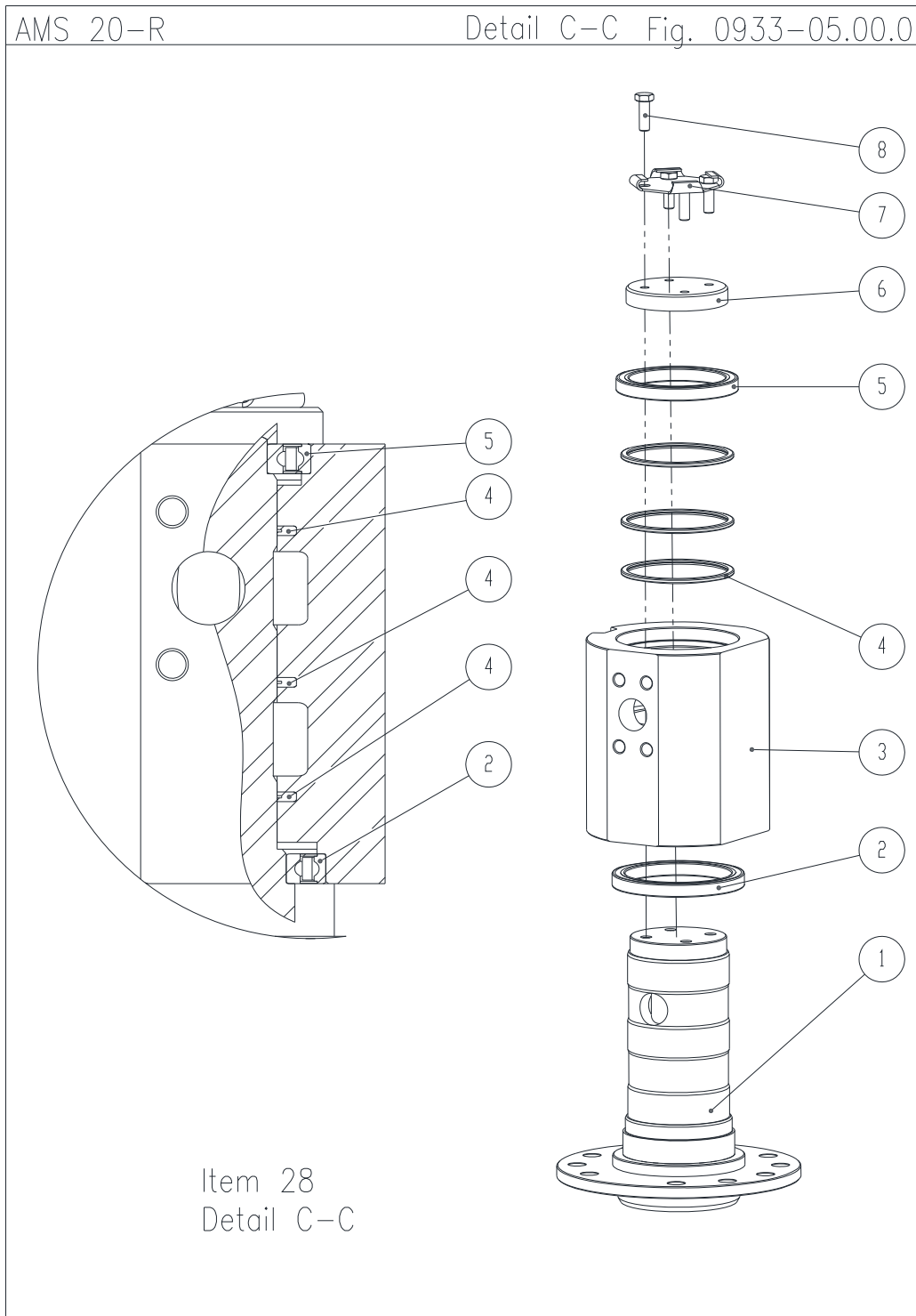
Table 4.6 Subhead and Rotation Assembly. Table is applicable to (R).

<u>Pos</u>	<u>Part Name</u>	<u>Part No.</u>	<u>Specification</u>	<u>Qty</u>	<u>Note</u>
1	Subhead	PR0820600A	AMS20R	1	(R)
2	Locking Bolt	PR09330130		1	(R)
3	Bearing Slewing Ring	ZZLA0038		1	(R)
4	Grease housing	PR09330150		2	(R)
5	Grease fitting	90201		2	(R)
6	Rubber protection plate	PR09330260		2	(R)
7	Protection Cover	PR09330250		2	(R)
8	Plain washer w/o chamfer	ZZBM38100100001	M10 DIN 125-1 A	4	(R)
9	SH Bolt	940587	M10 x 30 DIN 912-12.9	4	(R)
10	FL HS Washer	91138	M20 DIN 6916	28	(R)
11	SH Bolt	574463	M20 x 110 DIN 912-12.9	28	(R)
12	HH Bolt	577536	M14 x 45 DIN 912-12.9	8	(R)
13	NORD-LOCK washer	678654	NL 14	8	(R)
14	Hydraulic Flange LH	PR09330220		1	(R)
15	Seal	ZZDS14041002000		2	(R)
16	Split flange	575847		4	(R)
17	HH Bolt	ZZBM01010120030	M12 x 30 DIN 933-8.8	2	(R)
18	NORD-LOCK washer	91012	NL 12	10	(R)
19	Pinion M=5 Z=15	PR00610140		2	(R)
20	Spacer	PR09330140		2	(R)
21	SH Bolt	91118	M12 x 70 DIN 912-12.9	4	(R)
22	SH Bolt	659754	M12 x 90 DIN 912-12.9	4	(R)
23	Washer for Pinion	PR00620120		2	(R)
24	SH Bolt	90517	M16 x 35 DIN 912-8.8	12	(R)
25	NORD-LOCK washer	90597	NL 16	2	(R)
26	Swivel Locker	PR09330240		1	(R)
27	Hydraulic Flange RH	PR09330230		1	(R)
28	Hydraulic Swivel	ZZDD71061		1	(R)
29	Seal	ZZDS14041001600		2	(R)
30	Swivel Flange	PR08200260	SAE 1.25" - 6000 PSI	1	(R)
31	SH Bolt	678575	M16 x 80 DIN 912-12.9	4	(R)
32	Hydraulic Motor & Crossover Relief Valve	ZZHM0900		1	(R)
33	Parker Hydraulic Motor	ZZHM08995		1	(R)
34	Motor Seal Kit	ZZDS0900		2	(R)

AMS-R (R) => Rotation, AMS-NR (NR) => Non-Rotation
 Cylinder Barrel (CB) => Jaw Close, Cylinder Rod (CR) => Jaw Open

4.0 Spare Parts Identification

Fig. 0933-05.00.0 Hydraulic Swivel Assembly. Figure is applicable to (R).



Unless otherwise noted, parts are common to both AMS-R and AMS-NR.
 AMS-R (R) => Rotation, AMS-NR (NR) => Non-Rotation
 Cylinder Barrel (CB) => Jaw Close, Cylinder Rod (CR) => Jaw Open

4.0 Spare Parts Identification

Table 4.6.1 Hydraulic Swivel Assembly. Table is applicable to (R).

<u>Pos</u>	<u>Part Name</u>	<u>Part No.</u>	<u>Specification</u>	<u>Qty</u>	<u>Note</u>
28	Hydraulic Swivel	ZZDD71061		1	(R)
---	Seal Kit				1 (R)
1	Stator D2053 RB			1	(R)
2	Deep Groove Ball Bearing	61821-2RS1		1	(R)
3	Housing D2053 RB			1	(R)
4	Seal Kit	ZZDS71061		1	(R)
5	Deep Groove Ball Bearing	61819-2RS1		1	(R)
6	Cover			1	(R)
7	Cover Plate			1	(R)
8	Hexagon head screw	056167	M10 x 30 DIN 933-8.8	4	(R)

Note 1: Order seal kit. Seals are not available separately.

Note 2: Non-serviceable item

Note 3: Special order. Contact Allied.

Unless otherwise noted, parts are common to both AMS-R and AMS-NR.

AMS-R (R) => Rotation, AMS-NR (NR) => Non-Rotation

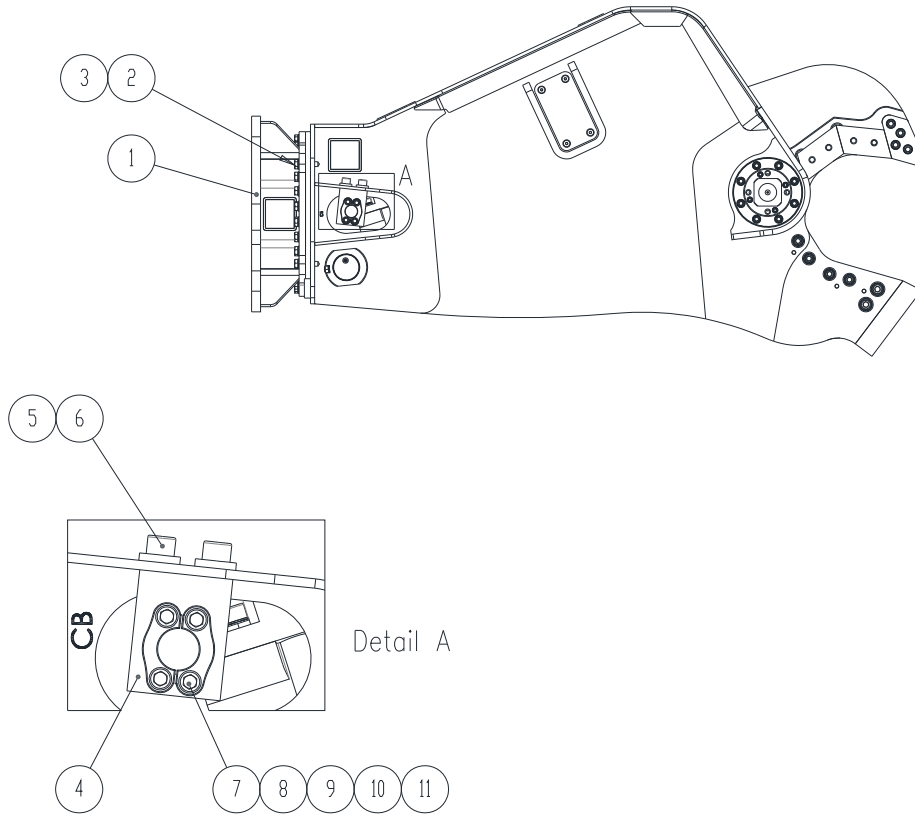
Cylinder Barrel (CB) => Jaw Close, Cylinder Rod (CR) => Jaw Open

4.0 Spare Parts Identification

Fig. 0821-0800 NR Subhead - Applicable to (NR)

AMS020-NR

0821-08.00.0



Unless otherwise noted, parts are common to both AMS-R and AMS-NR.
AMS-R (R) => Rotation, AMS-NR (NR) => Non-Rotation
Cylinder Barrel (CB) => Jaw Close, Cylinder Rod (CR) => Jaw Open

4.0 Spare Parts Identification

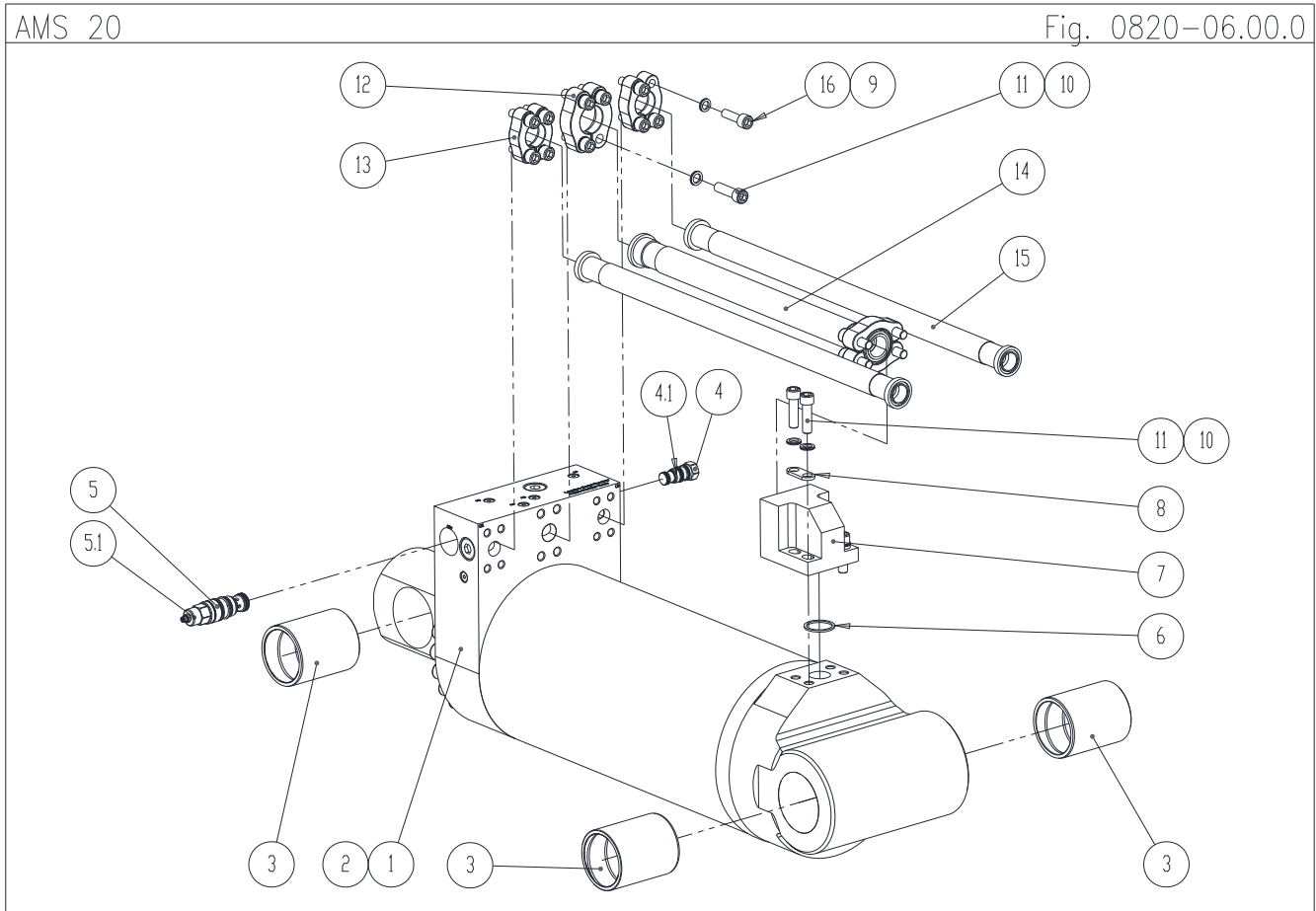
Table 4.7 Subhead Non-Rotation Type. Table is applicable to (NR).

<u>Pos</u>	<u>Part Name</u>	<u>Part No.</u>	<u>Specification</u>	<u>Qty</u>	<u>Note</u>
1	Subhead Non-Rotate	PR.0820.700.0		1	(NR)
2	Washer	ZZ.BM04030200001	M20 DIN 6916	26	(NR)
3	Hex Head Bolt	ZZ.BM04100200060	M20 x 60 DIN 931-10.9	26	(NR)
4-11	see Table 4.12	---	---	---	(NR)

Unless otherwise noted, parts are common to both AMS-R and AMS-NR.
 AMS-R (R) => Rotation, AMS-NR (NR) => Non-Rotation
 Cylinder Barrel (CB) => Jaw Close, Cylinder Rod (CR) => Jaw Open

4.0 Spare Parts Identification

Fig. 0820-06.00.0 Cylinder Assembly. Figure is applicable to AMS-R.



Unless otherwise noted, parts are common to both AMS-R and AMS-NR.
 AMS-R (R) => Rotation, AMS-NR (NR) => Non-Rotation
 Cylinder Barrel (CB) => Jaw Close, Cylinder Rod (CR) => Jaw Open

4.0 Spare Parts Identification

Table 4.8 Cylinder Assembly

<u>Pos</u>	<u>Part Name</u>	<u>Part No.</u>	<u>Specification</u>	<u>Qty</u>	<u>Note</u>
1	Hydraulic Cylinder	ZZCL001005934	250-180-508	1	
2	Seal kit cylinder	ZZDS001005934		1	
3	Bearing bush	ZZLA001005934	105-95-130	3	
4	Check Valve	ZZVBB301159J25		1	
4.1	Seal kit Pilot-to-close Check Valve	ZZDS9236938		1	
5	Counter Balance Valve	ZZVBB301149J25		1	
5.1	Seal kit Counter Balance Valve / Pilot-to- close Check Valve	ZZDS9330048		1	
6	Seal	ZZDS14041002400		1	
7	Rear Port Block	PR08250050		1	
8	Support Plate	PR08250060	SAE 1 1/2"	2	
9	NORD-LOCK washer	678569	NL 14	8	
10	SH Bolt	679037	M16 x 55 DIN 912-12.9	4	
11	NORD-LOCK washer	90597	NL 16	8	
12	Split flange	575847	1 1/2"	4	
13	Split flange	053864	1 1/4"	4	
14	Hydraulic Hose	ZZSL397	Fig. 0820-07.00.0	1	
15	Hydraulic Hose	ZZSL398	Fig. 0820-07.00.0	2	(R)
16	SH Bolt	658669	M14 x 50 DIN 912-12.9	8	

Unless otherwise noted, parts are common to both AMS-R and AMS-NR.

AMS-R (R) => Rotation, AMS-NR (NR) => Non-Rotation
Cylinder Barrel (CB) => Jaw Close, Cylinder Rod (CR) => Jaw Open

4.0 Spare Parts Identification

Fig. 0820-07.00.0 Hoses for Cylinder. Figure is applicable to (R).

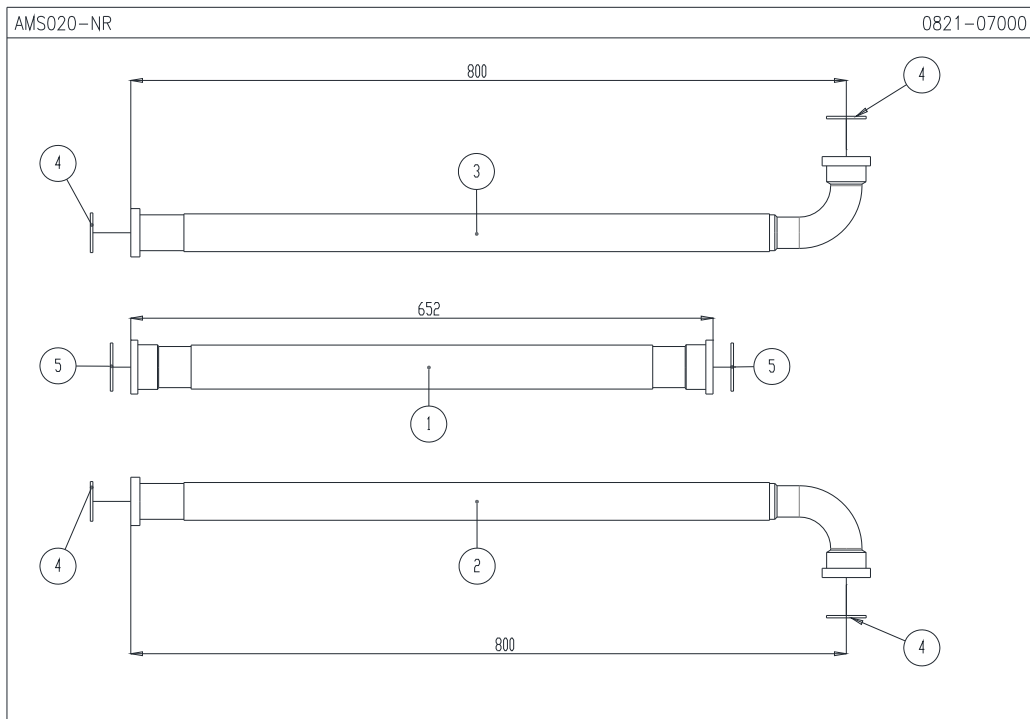
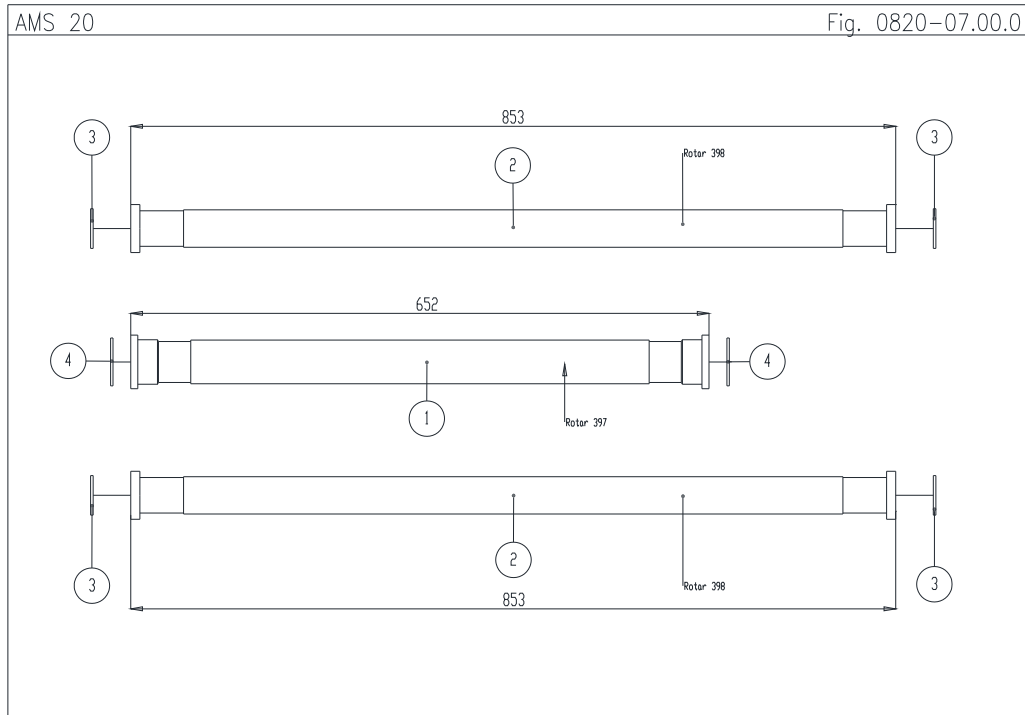


Fig. 0821-07000 Hoses for Cylinder. Figure is applicable to (NR).

Unless otherwise noted, parts are common to both AMS-R and AMS-NR.
 AMS-R (R) => Rotation, AMS-NR (NR) => Non-Rotation
 Cylinder Barrel (CB) => Jaw Close, Cylinder Rod (CR) => Jaw Open

4.0 Spare Parts Identification

Table 4.9 Hoses for Cylinder. Table is applicable to (R)

<u>Pos</u>	<u>Part Name</u>	<u>Part No.</u>	<u>Specification</u>	<u>Qty</u>	<u>Note</u>
1	Hose	ZZSL397		1	(R)
2	Hose	ZZSL398		2	(R)
3	Seal	ZZ.DS14041002000	SAE 1.25"	4	(R)
4	Seal	ZZ.DS14041002400	SAE 1.5"	2	(R)

Table 4.10 Hoses for Cylinder. Table is applicable to (NR)

<u>Pos</u>	<u>Part Name</u>	<u>Part No.</u>	<u>Specification</u>	<u>Qty</u>	<u>Note</u>
1	Hydraulic Hose	ZZ.SL397		1	(NR)
2	Hydraulic Hose	ZZ.SL405		1	(NR)
3	Hydraulic Hose	ZZ.SL406		1	(NR)
4	Seal	ZZ.DS14041002000	SAE 1.25"	4	(NR)
5	Seal	ZZ.DS14041002400	SAE 1.5"	2	

AMS-R (R) => Rotation, AMS-NR (NR) => Non-Rotation
 Cylinder Barrel (CB) => Jaw Close, Cylinder Rod (CR) => Jaw Open

4.0 Spare Parts Identification

Fig. 0820-08.00.0 Hydraulic Connections. Figure is applicable to (R).

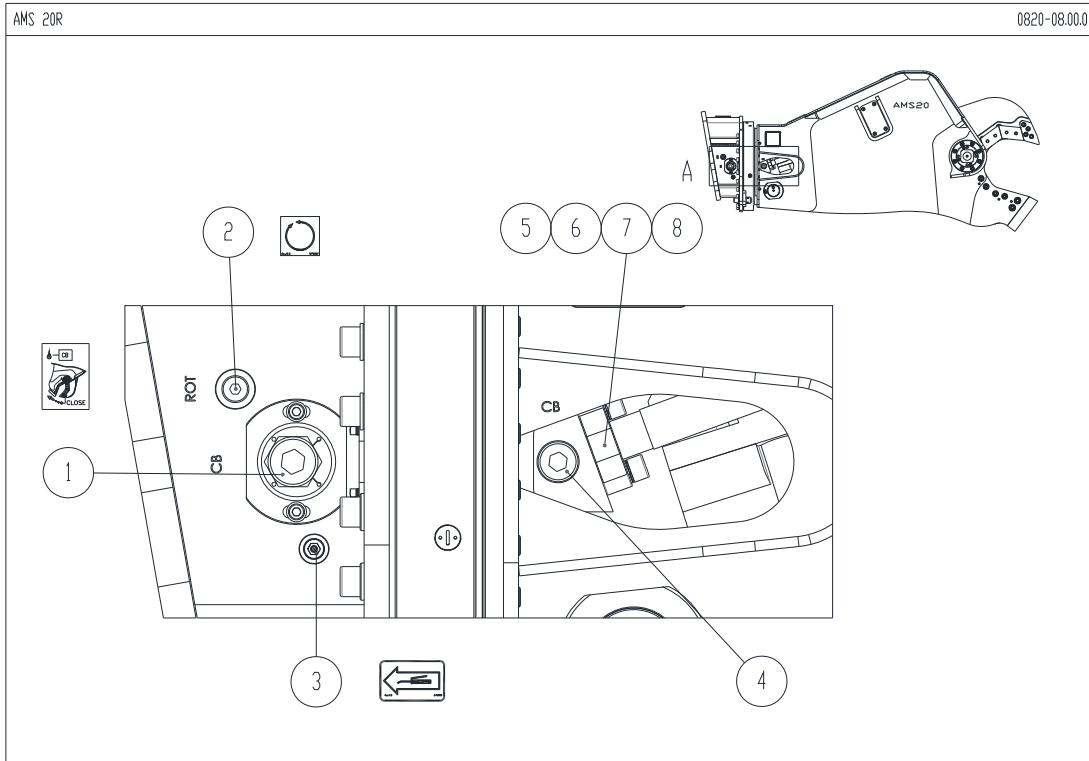
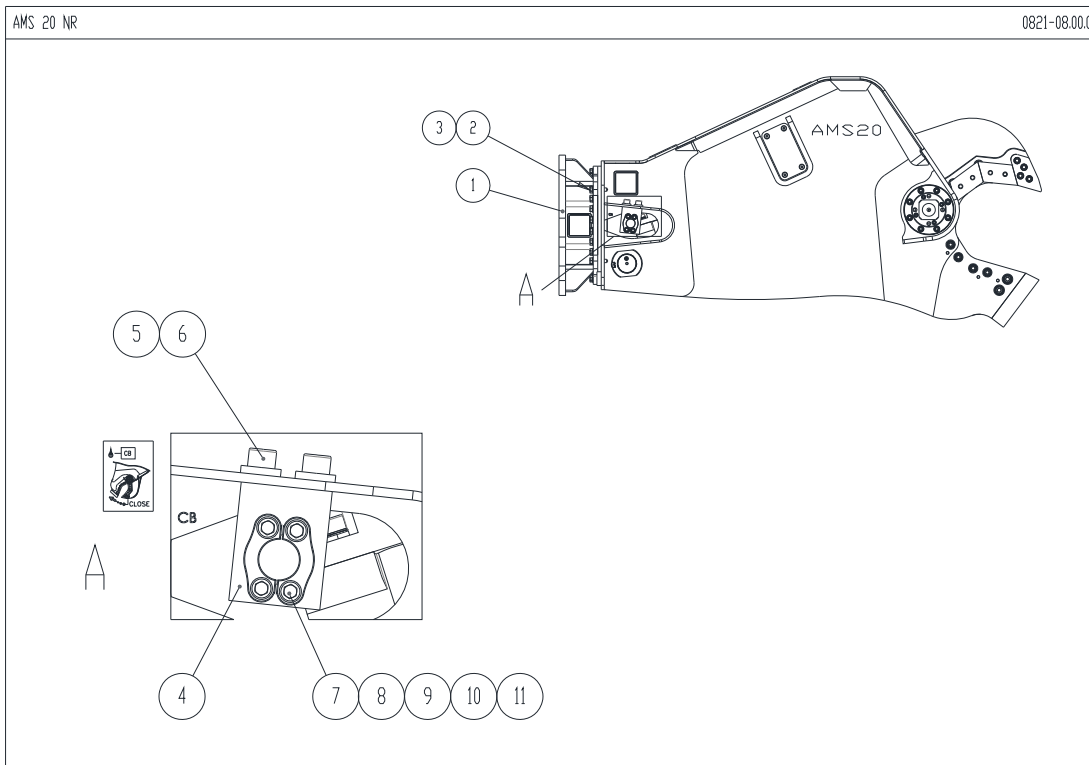


Fig. 0821-08.00.0 Hydraulic Connections. Figure is applicable to (NR)



AMS-R (R) => Rotation, AMS-NR (NR) => Non-Rotation
 Cylinder Barrel (CB) => Jaw Close, Cylinder Rod (CR) => Jaw Open

4.0 Spare Parts Identification

Table 4.11 Hydraulic Connections. Table is applicable to (R).

<u>Pos</u>	<u>Part Name</u>	<u>Part No.</u>	<u>Specification</u>	<u>Qty</u>	<u>Note</u>
1	Blind plug	ZZ.SL7060	BSP 1 1/4"	2	(R)
2	Blind plug	ZZ.SL7040	BSP 1/2"	2	(R)
3	Grease fitting	90201		2	(R)
4	Blind plug	ZZ.SL7050	BSP 1"	2	(R)
5	Seal	ZZ.DS14041002400		2	(R)
6	Split flange	575847	SAE 1 1/2'	4	(R)
7	NORD-LOCK washer	678659	NL 14	8	(R)
8	SH Bolt	679729	M14 x 50 DIN 912-12.9	8	(R)

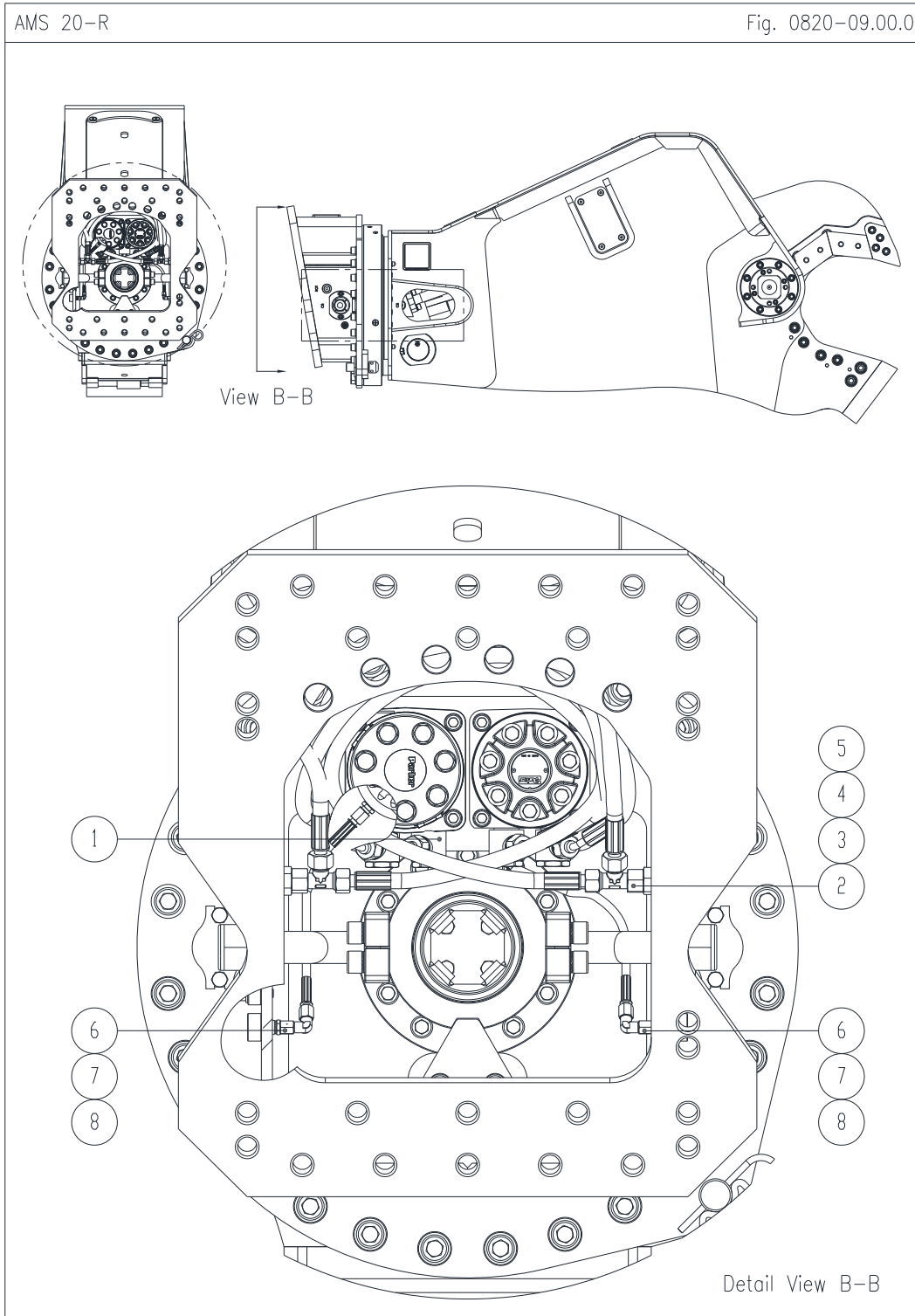
Table 4.12 Hydraulic Connections. Table is applicable to (NR).

<u>Pos</u>	<u>Part Name</u>	<u>Part No.</u>	<u>Specification</u>	<u>Qty</u>	<u>Note</u>
1	Subhead	PR.0820.700.0	Non-Rotate	1	(NR)
2	Washer	ZZ.BM04030200001	M20 DIN 6916	26	(NR)
3	Hex Head Bolt	ZZ.BM04100200060	M20 x 60 DIN 931-10.9	26	(NR)
4	Port Block	PR.0820.019.0		2	(NR)
5	Washer	ZZ.BM38430200001	M20 DIN 7349	4	(NR)
6	Socket Head Bolt	ZZ.BM07060200040	M20 x 40 DIN 912-8.8	4	(NR)
7	Blind Flange	ZZ.SL998001	SAE 6000 PSI 1.25"	2	(NR)
8	Split flange	ZZ.SL9980	SAE 6000 PSI 1.25"	4	(NR)
9	HD-Seal	ZZ.DS14041002000	SAE 1.25"	2	(NR)
10	Washer	ZZ.BM37963140001	NL 14	8	(NR)
11	Socket Head Bolt	ZZ.BM07000140050	M14 x 50 DIN 912-12.9	8	(NR)

AMS-R (R) => Rotation, AMS-NR (NR) => Non-Rotation
 Cylinder Barrel (CB) => Jaw Close, Cylinder Rod (CR) => Jaw Open

4.0 Spare Parts Identification

Fig. 0820-09.00.0 Hydraulic Connections Inside the Subhead. Figure is applicable to (R).



4.0 Spare Parts Identification

Table 4.13 Hydraulic Connections Inside Subhead. Table is applicable to AMS-R.

<u>Pos</u>	<u>Part Name</u>	<u>Part No.</u>	<u>Specification</u>	<u>Qty</u>	<u>Note</u>
1	Banjo coupling	ZZSL5460	DSW 12 SR (1/2") S	4	(R)
2	Straight male stud fitting	ZZSL5129	GE 12S (1/2") ED	2	(R)
3	Adjustable L-Coupling	ZZSL6612	ELD 12 S	2	(R)
4	Hydraulic Hose	ZZSL406	406	2	(R)
5	Hydraulic Hose	ZZSL407	407	2	(R)
6	Straight male stud fitting	ZZSL5070	GE 6L 1/4" ED	4	(R)
7	Adjustable elbow coupling	ZZSL6006	EW 06L	3	(R)
8	Lubrication hose	ZZSL408	408	2	(R)

AMS-R (R) => Rotation, AMS-NR (NR) => Non-Rotation
 Cylinder Barrel (CB) => Jaw Close, Cylinder Rod (CR) => Jaw Open

5.0 How To Order Spare Parts

Product Scrap Shear
 Model AMS 20-R / AMS 20-NR
 Serial No. _____

Please provide complete information including the Product, Model and Serial Number when ordering parts. See Section 2.3 Owner's record of the equipment.

Please fill out completely

Line	Part Name	Part Number	Quantity	Price
1				
2				
3				
4				
5				
6				
7				
8				
9				
10				

Your contact information

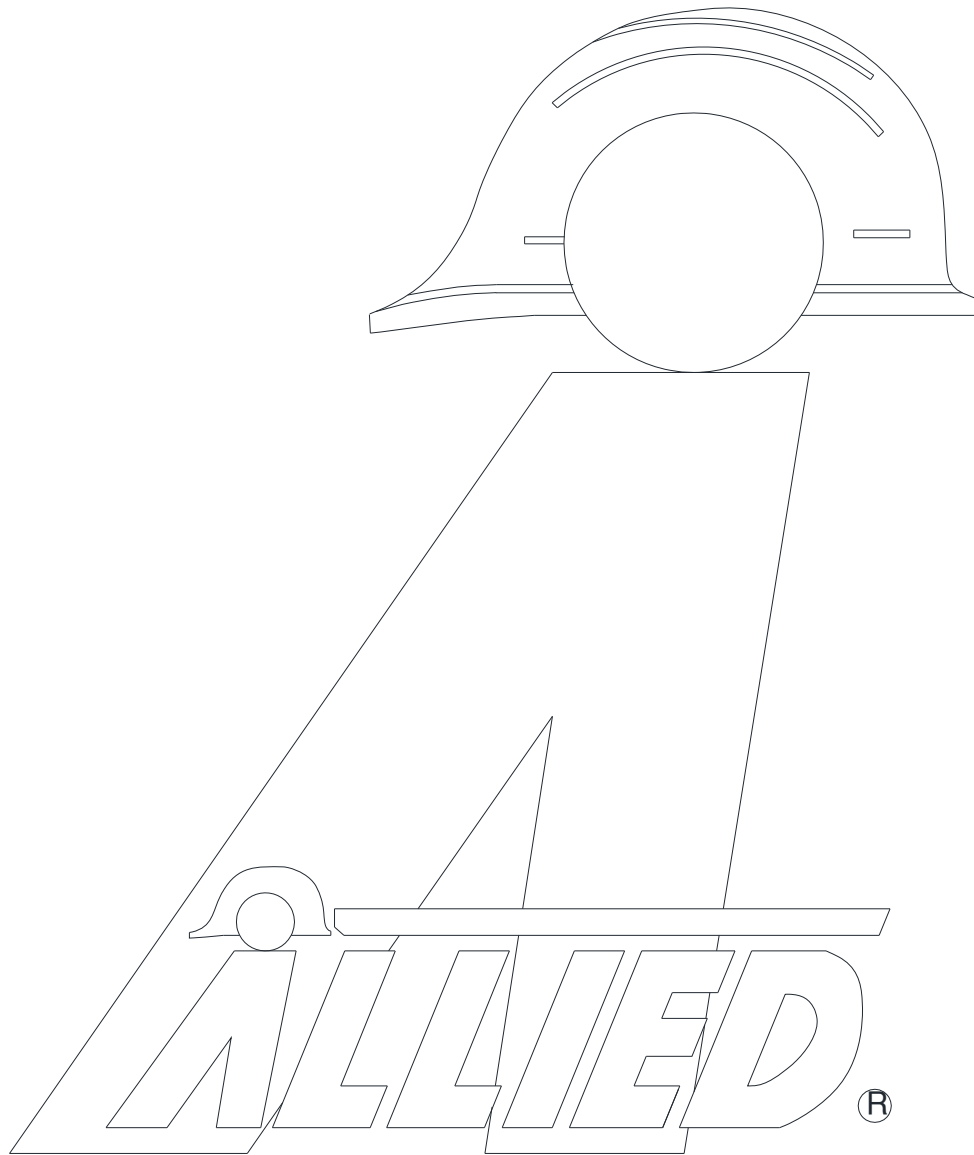
Your Name _____ Company Name _____
 Phone _____ Account Number _____
 Fax _____ Purchase order _____
 Email _____ Shipping method _____

See note*

Billing Address _____ Shipping Address _____

***Note: All backordered parts will be shipped when available via the same method as the original order unless initialed and checked below:**

Initials _____
 Ship complete order only
 Ship available parts and contact customer on disposition of backordered parts
 Other – specify below



3900 Kelley Avenue, Cleveland, Ohio 44114
Tel: 216-431-2600 Fax: 216-431-2601
e-mail: Sales@AlliedCP.com
website: <http://www.AlliedCP.com>