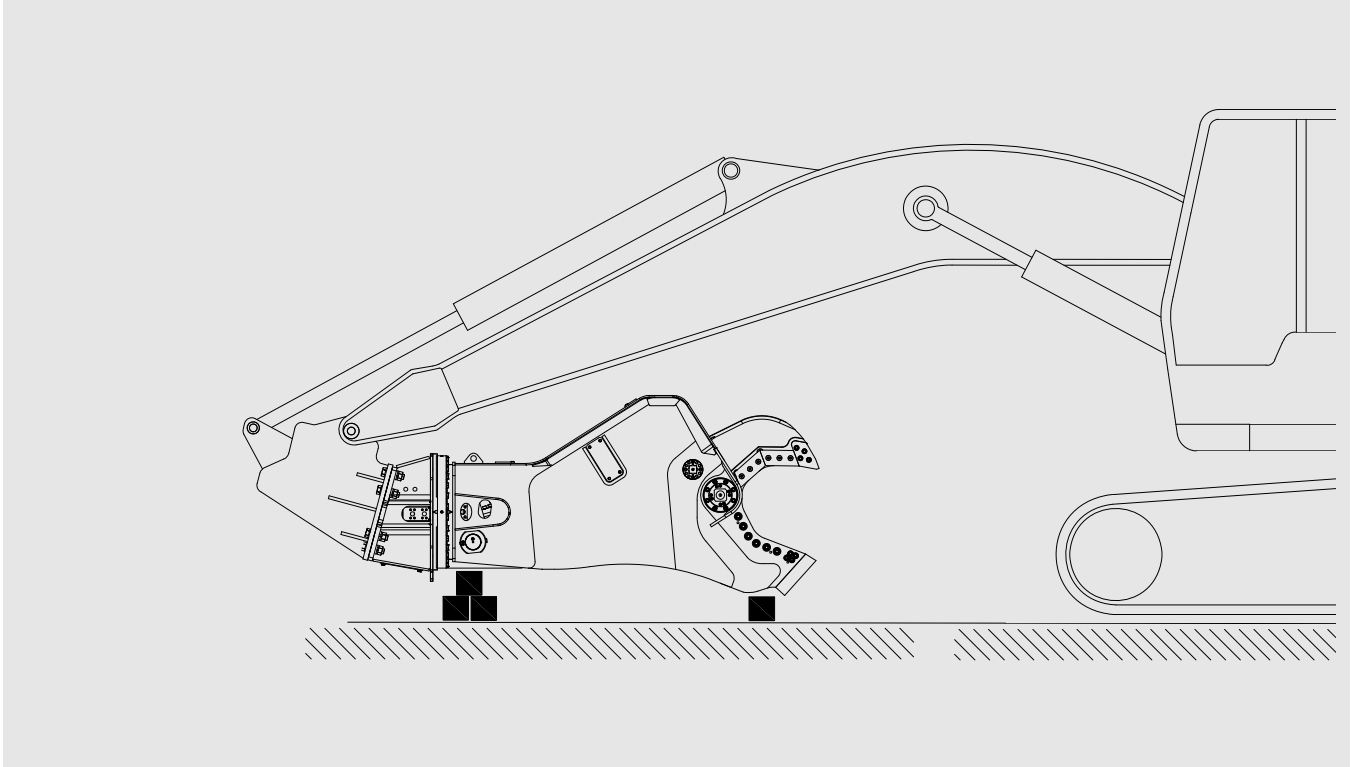

Mobile Scrap Shear

Model AMS40



Parts Manual

Keep this manual in a convenient location so that it is easily accessible for future reference. Contact your Allied Dealer or the Allied Customer Service Department for replacement manuals.



AMS40/PM575887

Enquiries regarding this manual must include the effective date shown on inside cover



Contact Information

Allied Construction Products, LLC

3900 Kelley Ave

Cleveland, Ohio 44114

Tel: 216-431-2600

Fax: 216-431-2601

www.alliedcp.com

E-mail: sales@alliedcp.com

Revision History of Document 575887

Allied Construction Products, LLC reserves the right to change, edit, delete or modify the content of this document, including descriptions, illustrations and specifications without prior notification. Specifications are based on published information at the time of publication. Go to www.alliedcp.com for product or document updates.

<u>Effective Date</u>	<u>Page</u>	<u>Summary of Change</u>
Mar 2016	12	Table 3.7 item 11 part change 90511
May 10, 2012	23, 24	Revise Tables 3.1, 3.2 – add label 576092. Revise Table 3.4, Add Fig 0840-10.00.B & Table 3.13
May 8, 2012	4	Revise Fig. “A” rotation & drain connection
Feb 14, 2012	3, 4, 5	Rev12feb -
Jan 31, 2012	All	1st Edition 575887_rev12jan

Table of Contents

<u>Section</u>	<u>Page</u>
Document Revisions	i
Table of Contents	ii
List of Figures	ii
1.0 Introduction & Scope	1
1.1 Purpose of This Manual.....	1
1.2 How To Order Replacement Manuals	1
1.3 Related Publications.....	1
2.0 Equipment Identification	2
2.1 Serial Number Location.....	2
2.2 Equipment Identification Label.....	2
2.3 Owner’s Record of the Equipment.....	2
3.0 Spare Parts Identification	3
3.1 Safety & Information Labels.....	3
3.2 Sub-assemblies.....	6
3.2.1 Shear Body Assembly.....	7
3.2.2 Lower Jaw Assembly.....	9
3.2.3 Upper Jaw Assembly.....	11
3.2.4 Subhead & Rotation Assembly.....	13
3.2.5 Cylinder Assembly.....	15
3.2.6 Hydraulic Swivel Assembly.....	17
3.2.7 Hydraulic Hose Assembly.....	19
3.2.8 Hydraulic Connections.....	21
3.2.9 Hoses Inside Subhead.....	23

<u>List of Figures</u>	<u>Page</u>
Fig. 2-1 Equipment Identification.....	2
Fig. 2-2 Equipment Identification Tag.....	2
Fig. 3.1-3.9 Safety & Information Labels...	3
Fig. “A” Location of Labels On Equipment	4
Fig. “B” Location of Lubrication Labels	4
Fig. 0840-00.00.00.B Sub-Assemblies.....	6
Fig. 0840-01.00.B Shear body.....	7
Fig. 0840-02.00.B Lower.....	9
Fig. 0840-03.00.A Upper.....	11
Fig. 0840-04.00.B Subhead & Rotation....	13
Fig. 0840-05.00.A Hydraulic Cylinder.....	15
Fig. 0840-06.00.A Hydraulic Swivel.....	17
Fig. 0840-08.00.B Hydraulic Hoses.....	19
Fig. 0840-09.00.B Hydraulic Connectors..	21
Fig. 0840-10.00.B Hydraulic Connectors..	23

1.0 Introduction and Scope

1.1 Purpose of This Manual

Parts Manual 575887

This manual has been prepared to assist with the identification of all components used in the Mobile Scrap Shear. Figures depicted in Parts Manuals are for purposes of parts identification and replacement. The Parts Manual is not intended for use in the repair or service of the Allied equipment.

Content included in the Parts Manual:

- Illustrations of assemblies, name of part, quantity and descriptions that help identify each component and its location on the Mobile Scrap Shear.
- Ordering information for the safety and information labels displayed on the equipment.
- An order form is located at the back of this manual

Material presented in this manual, including illustrations and descriptions, is intended solely for use with the equipment identified in Table 1.1 and may not be suitable for other models.

Prior to use, confirm that the information recorded on the equipment's identification label corresponds with Table 1.1. For the location of this label, refer to Section 2.0.

Table 1.1 About This Manual



Document ID.	PM575887
Category	Spare Parts
Current Status*	See Inside Cover
Product Name:	Mobile Shear
Applicable Model[s]:	AMS40
Years of Manufacture:	2012
*Enquiries regarding this manual must include effective date shown on inside cover	

The document, identified in Table 1.1, is published solely for information purposes and should not be considered all-inclusive. If further information is required, contact your local Allied dealer or the Allied Customer Service Department.

The content of this document has been reviewed for accuracy. Allied Construction Products, LLC has endeavored to deliver the highest degree of accuracy possible and has made every effort to provide information as complete as possible for this document. However, continuous improvement of our products is an Allied policy. The material in this publication, including descriptions, illustrations and specifications, describes the product at the time of its publication, and may not reflect the product in the future. Revisions made to the content of this document are recorded on the inside cover.

1.2 How To Order Replacement Publications

This manual is an integral part of this product. Keep it in a convenient location so that it is easily accessible for future reference.

Replacement manuals can be ordered by contacting your Allied dealer service center. These manuals may also be viewed and downloaded at: www.alliedcp.com

1.3 Related Publications

Allied Construction Products, LLC offers the following publications for the product identified in Table 1.1.

Safety, Operation & Maintenance Manual 575886

For use with Models AMS30, AMS40, AMS50, AMS100

This manual has been prepared to assist the operator and maintenance personnel with the information necessary for the safe and proper use of the Mobile Scrap Shear.

Content included in the Safety, Operation & Maintenance Manual:

- Safety Information
- Equipment Identification
- Technical Data (Weight & dimensions)
- Installation and Set-up
- Pre-Operation Inspection
- How to Operate the Equipment
- Maintenance Schedule
- Lubrication
- Cutting Blades – Inspection / Changing
- Troubleshooting
- Transporting, Removal, Lifting, & Storage

2.0 Equipment Identification

2.1 Serial Number Location

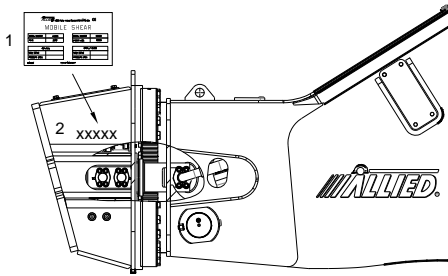


Fig 2-1 Equipment Identification

Refer to Figure 2-1. The Serial Number assigned to this equipment is found in the following locations:

1. On the Equipment Identification Label.
2. Stamped on the subhead.

2.2 Equipment Identification Tag

ALLIED 3900 Kelly Avenue Cleveland OH 44114 USA CE			
MOBILE SHEAR			
MODEL NUMBER	AMS00	SERIAL NUMBER	85000
YEAR	2012	WEIGHT LBS.	13625
ROTATION		OPEN / CLOSE	
FLOW (GPM)		FLOW (GPM)	
PRESSURE (PSI)		PRESSURE (PSI)	
845001		www.alliedcp.com	

Fig 2-2 Equipment Identification Label

The Equipment Identification Tag is affixed to the housing. It provides the following information:

- Manufacturer's name
- Address
- Product name
- Model number
- Serial number
- Year of manufacture
- Weight

Confirm that the information contained on the Tag corresponds with the information provided in Section 1, Table 1.1.

2.3 Owner's Record of the Equipment

- Record the Model and Serial Number from the Equipment Identification Tag to the space provided below.
- Indicate the date in which the Allied equipment was placed into service.

Model AMS-040

Part Number: 575380

Serial Number: _____

In Service Date: _____

Product Registration Date _____

- Your local Allied dealer requires this information to better assist you with questions regarding parts, warranty, operation, maintenance, or repair.

Register this equipment by returning the completed warranty registration form to Allied.

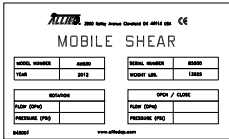

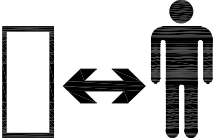
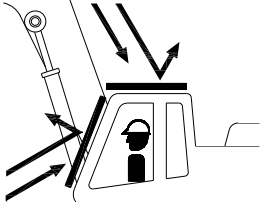

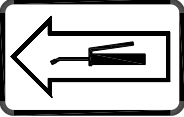
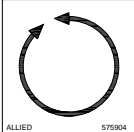
3.0 Spare Parts Identification

3.1 Safety and Information Labels

Information labels affixed to the Allied equipment include safety warnings, identification and instructions important to operation and service. Table 3.1 identifies and describes each label.

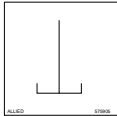

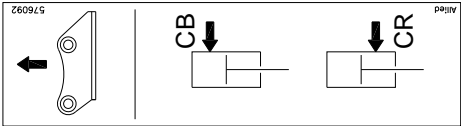
Words and illustrations must be readable. Keep all safety labels clean. Replace damaged or missing labels before operating this equipment. Refer to Table 3.2 for ordering information. Refer to Figure “A” for their location on the equipment.

Table 3.1 Safety and Information Labels

Figure	Label	Description
1		EQUIPMENT ID - Contains identifying information about the equipment, including: Product name, model number, serial number, company name and address.
2		SAFETY ALERT SYMBOL / READ INSTRUCTIONS - Directs personnel to the manual for safety-related precautions, further information / instructions.
3		STAY CLEAR – Alerts personnel and by-standers to maintain a safe distance from the work tool during operation.
4		PROJECTILE HAZARD – Alerts of the need for a protective guard to shield the operator from debris generated when the work tool is in operation.
5		LIFT POINT – Marks lift points for safe handling of the work tool.
6		LUBRICATION – Marks lubrication points on the equipment.
7		ROTATION – Marks the location of hydraulic connection port for motor rotation. Pictogram indicates rotation is bi-directional 360°.

3.1 Spare Parts Identification

Table 3.1 Safety and Information Labels [cont'd]

Figure	Label	Description
8		DRAIN – Marks the location of the port connection of the hydraulic motor’s case drain. Pictogram of simplified symbol, used in standard fluid power, to represent routing of drain line to tank.
9	AMS40	MODEL – Identifies the Model of the Allied Mobile Shear
10		ALLIED LOGO – The Allied brand identifier and is a registered trademark of Allied Construction Products, LLC.
11		CB and CR - Pictogram of bi-directional cylinder with arrows at CB (Cylinder Barrel) and CR (Cylinder Rod). Flow to CB closes the jaw. Flow to CR opens the jaw. This label is displayed on both near and far side of subhead. Observe the arrow’s direction above the mounting bracket for proper orientation.

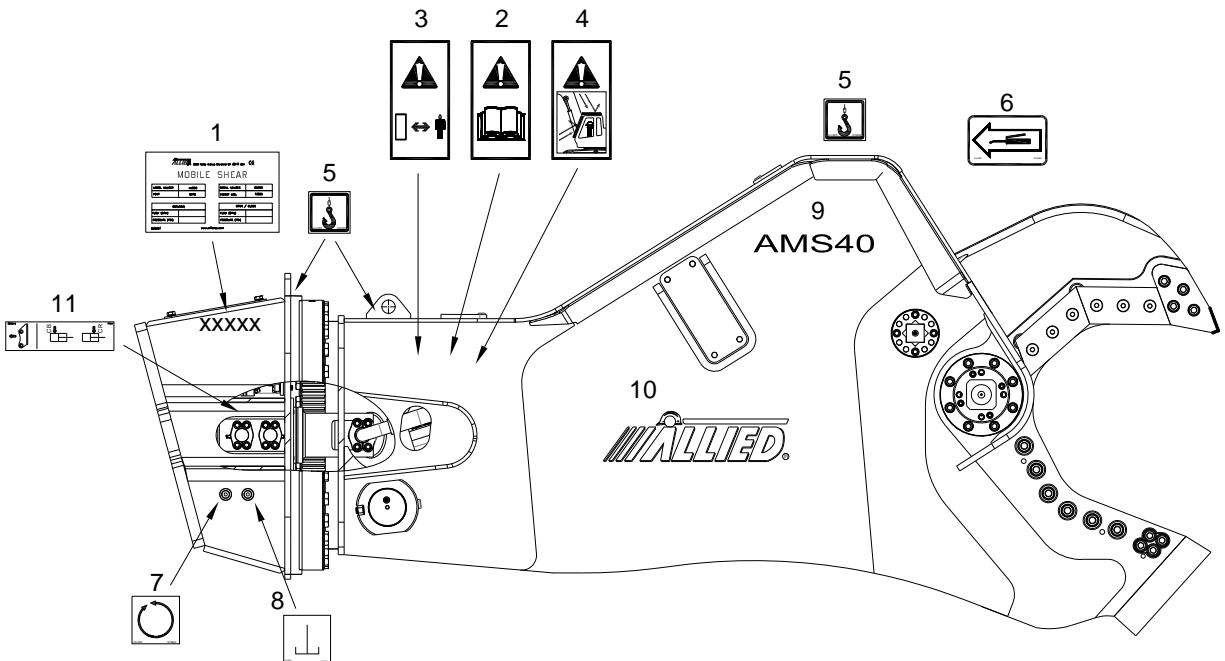


Fig. "A" Label Locations

3.1 Spare Parts Identification

Table 3.2 Ordering Information For Safety & Information Labels

Pos	Name	Part No.	Specification	Qty	Note
---	Label Set	575901	Includes Items 2-11	1	
1	Label	845001	Equipment ID	1	1
2	Label	676984	Pictogram, Read Instructions	2	
3	Label	840156	Pictogram, Stay Clear	2	
4	Label	575948	Pictogram, Guards Installed	2	
5	Label	676982	Pictogram, Lift Point	3	
6	Label	676985	Pictogram, Lube Point	12	
7	Label	575904	Pictogram, Rotation	2	
8	Label	575905	Pictogram, Drain	2	
9	Label	575903	Model AMS 40	2	
10	Label	676656	Allied Logo	2	
11	Label	576092	Pictogram, CB / CR Cylinder Action Open & Close	2	2

Notes-

1: Not Included in Label Set

2: Observe the arrow's reference to the mounting bracket when applying the label to LH & RH

Table 3.3 Lubrication Points

Pos	Part Name	Qty
A	Gear, slewing ring	2
B	Bearing, slewing ring	4
C	Cylinder pin (bottom end)	2

Pos	Part Name	Qty
D	Auto-guide/Puck	1
E	Main shaft	2
F	Cylinder pin (rod eye)	1

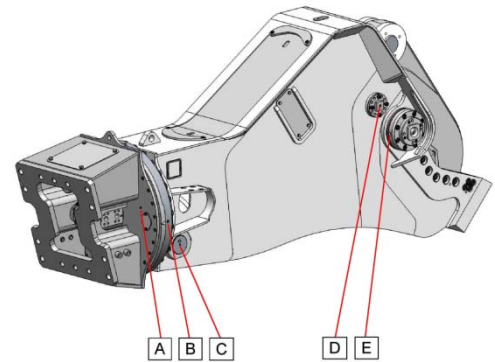
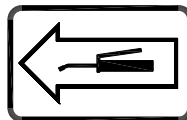
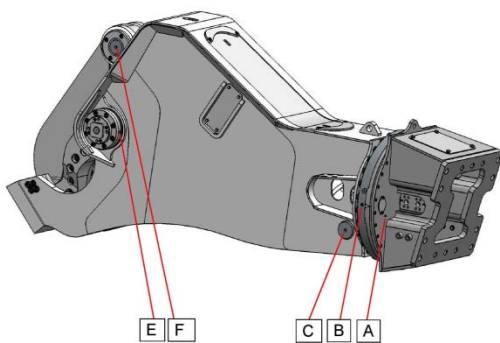


Fig. B Lubrication Points

3.2.0 Spare Parts Identification

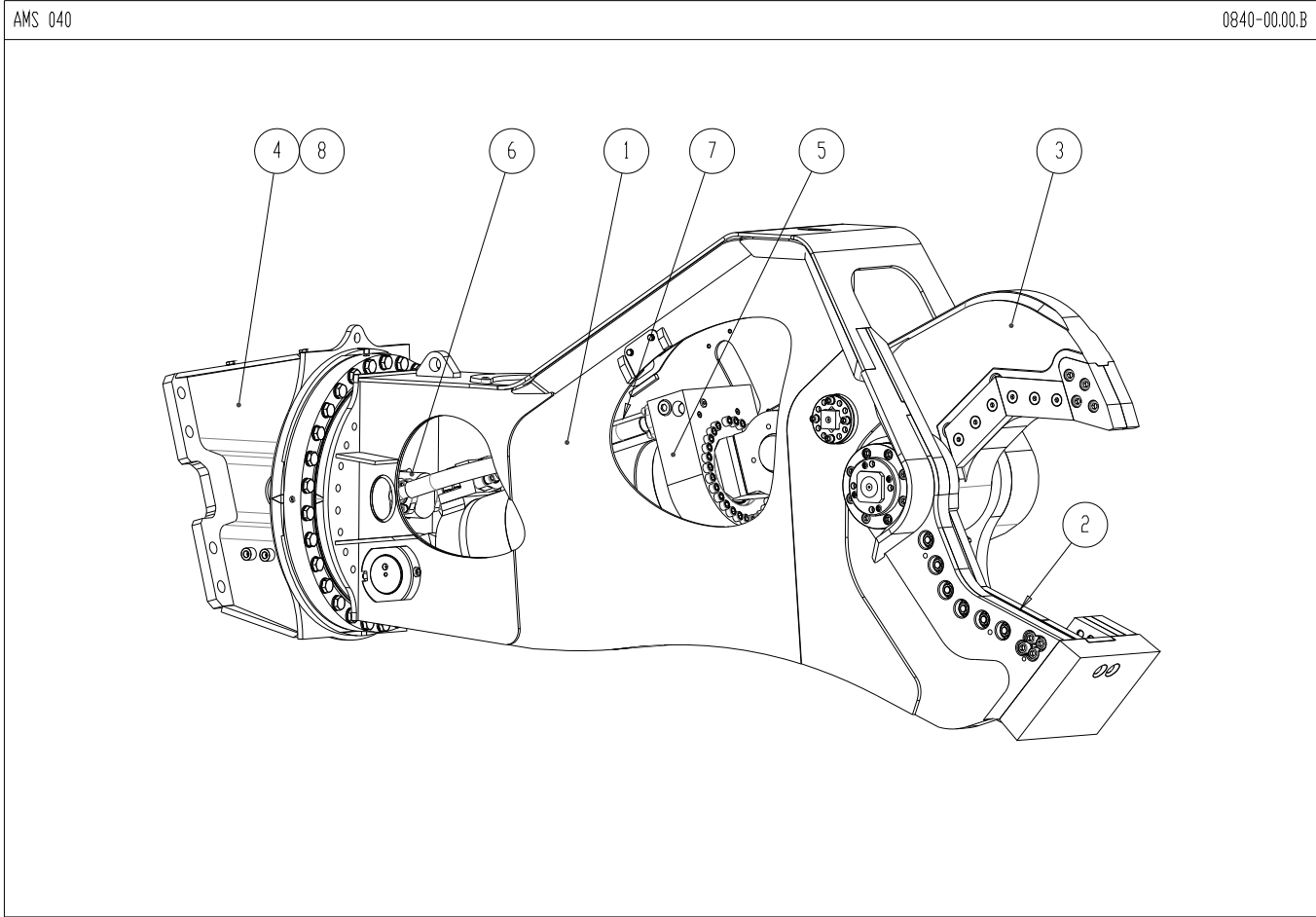


Fig. 0840-00.00.B

Table 3.4 Scrap Shear Sub-Assemblies

Pos	Name	Assembly	Figure	Page	Section	Table
1	Shear Body Assembly	0840-01.01.B	0840-01.00.B	7	3.2.1	3.5
2	Lower Jaw Assembly	0840-02.00.B	0840-02.00.B	9	3.2.2	3.6
3	Upper Jaw Assembly	0840-03.01.A	0840-03.01.A	11	3.2.3	3.7
4	Subhead & Rotation Ass'y	0840-04.01.B	0840-04.01.B	13	3.2.4	3.8
5	Cylinder Assembly	0840-05.00.A	0840-05.00.A	15	3.2.5	3.9
6	Hydraulic Swivel Ass'y	0840-06.01.A	0840-06.00.A	17	3.2.6	3.10
7	Hydraulic Hoses	0840-08.01.B	0840-08.00.B	19	3.2.7	3.11
8	Hydraulic Connections	0840-09.01.B	0840-09.00.B	21	3.2.8	3.12
---	Hoses Inside Subhead	0840-10.00.B	0840-10.00.B	23	3.2.9	3.13

3.2.1 Spare Parts Identification

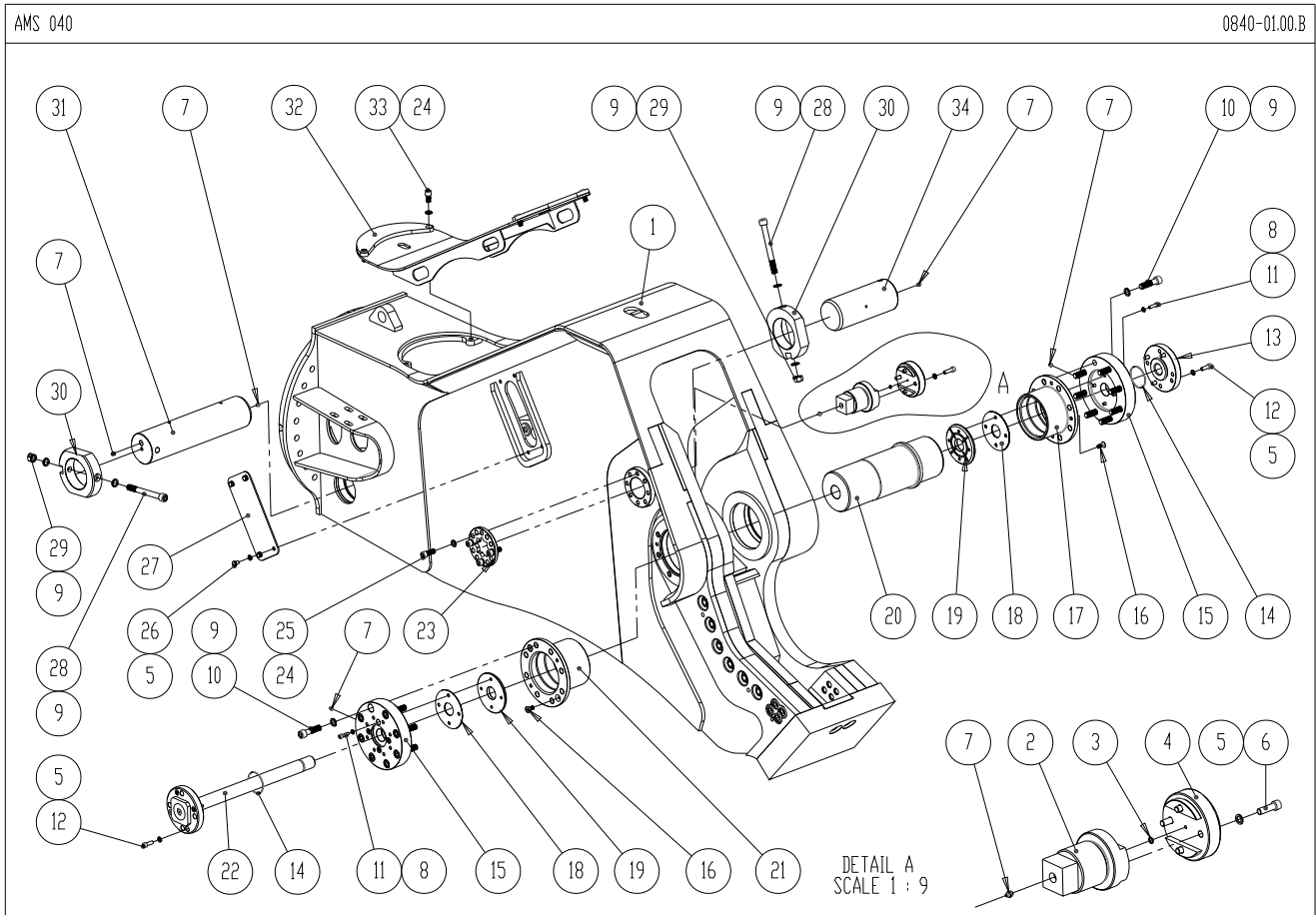


Fig. 0840-01.01.B

3.2.1 Spare Parts Identification

Table 3.5 Shear Body Assembly 0840-01.01.B

Pos	Name	Part No.	Specification	Qty	Note
1	Shear Body	---		1	1
2	Slide Screw	PR0840043		1	
3	Kant seal	ZZOR009340165K		1	
4	Slide Puck	PR0840025		1	
5	Washer	91012	M12 (NL Pair)	20	
6	Socket Head Bolt	90564	M12 x 40 mm	4	
7	Grease Nipple	90201		6	
8	Washer	91037	M10 (NL Pair)	8	
9	Washer	91010	M20 (NL Pair)	20	
10	Socket Head Bolt	575844	M20 x 80 mm	16	
11	Socket Head Bolt	91043	M10 x 35 mm	8	
12	Socket Head Bolt	575845	M12 x 35 mm	8	
13	Nut	PR0840013	Tie Rod	1	
14	O-Ring	ZZOR08400390		2	
15	End Cap	PR0840012		2	
16	Flat Head Socket Bolt	575818	M12 x 30 mm	4	
17	Main Bearing	PR0840007	L.H.	1	
18	Shim Set Pivot Group	PR0840058		1	
19	Thrust Bearing	PR0840011		2	
20	Main Shaft	---		1	1
21	Main Bearing	PR0840008	R.H.	1	
22	WLDT Tie Rod	PR0840020		1	
23	Lock	PR0840044		1	
24	Washer	90597	M16 (NL Pair)	8	
25	Socket Head Bolt	91005	M16 x 45 mm	4	
26	Hex Head Bolt	575838	M12 x 16 mm	8	
27	Side Cover	PR0840042		2	
28	Socket Head Bolt	575846	M20 x 200 mm	1	
29	Hex Nut	575811	M20	2	
30	Pin Keeper	PR0840019	Rear	2	
31	Pin	PR0840009	Rear	1	
32	Main cover	PR0840015	Shear body	1	
33	Socket Head Bolt	951620	M16 x 30 mm	8	
34	Front Pin	PR0830003		1	

Note 1: Non-serviceable item

3.2.2 Spare Parts Identification

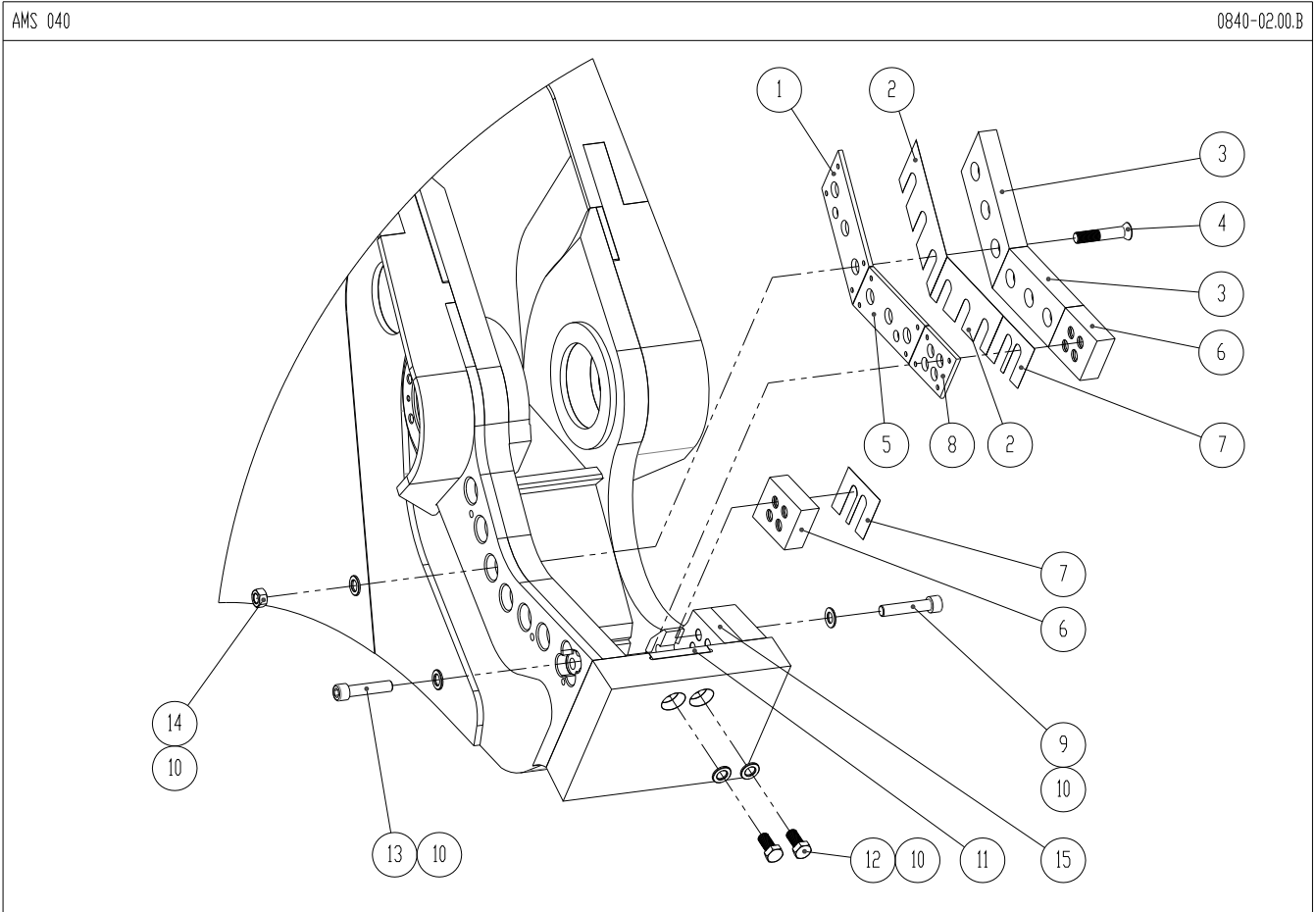


Fig. 0840-02.00.B

3.2.2 Spare Parts Identification

Table 3.6 Lower Jaw Assembly Fig. 0840-02.00.B

Pos	Name	Part No.	Specification	Qty	Note
---	Blade Kit Complete	575260			1
1	Adjustment Plate,	PR0840036	Lower Blade	1	2
2	Shim Set	PR0840059	Lower Blade	1	
3	Blade	PR0840003	Lower	2	
4	Flat Head Socket Bolt	575501	M24 x 130 mm	6	
5	Adjustment Plate	PR0840035	Lower Blade	1	2
6	Guide Blade	PR0840005	Lower	2	
7	Shim Set	PR0840060	Guide Blade	1	
8	Adjustment Plate	PR0840034	Guide Blade	1	2
9	Socket Head Bolt	575505	M24 x 120 mm	4	
10	Structural Washer	90511		16	
11	Razor Blade	PR0840002		1	
12	Hex Head Bolt	575467	M24 x 50 mm	2	
13	Socket Head Bolt	575468	M24 x 110 mm	4	
14	Hex nut	667220	M24	6	
15	Guide Blade Seat	PR0840006		1	

1. Blade Kit contains all blades, fasteners and shim sets. Adjustment plates not included.
2. Adjustment plates are serial number specific. Contact Allied.

3.2.3 Spare Parts Identification

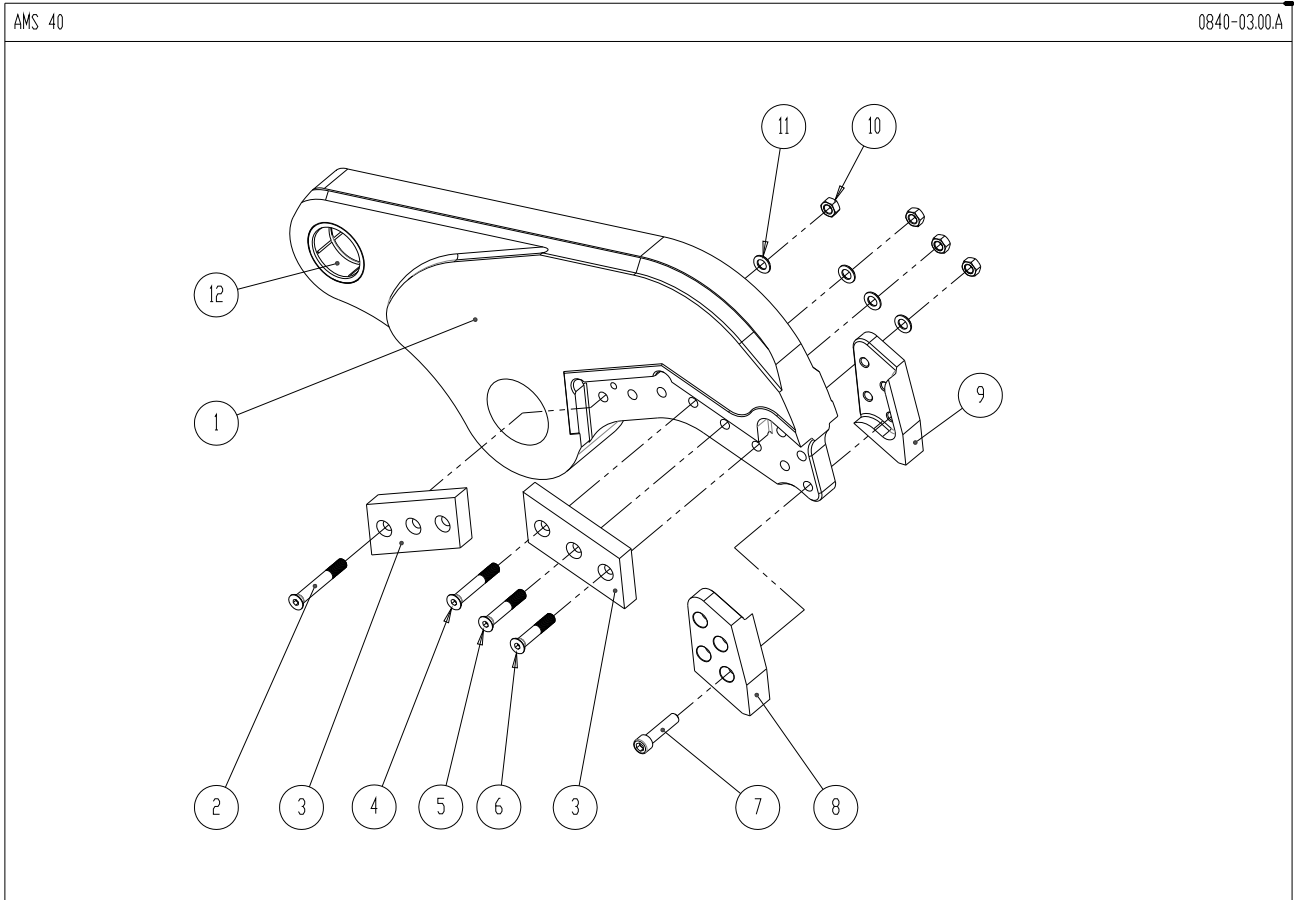


Fig. 0840-03.01.A

3.2.3 Spare Parts Identification

Table 3.7 Upper Jaw Assembly Fig. 0840-03.01.A

Pos	Name	Part No.	Specification	Qty	Note
---	Blade Kit Complete	575260		1	1
1	Jaw	---	Upper	1	2
2	Flat Head Socket Bolt	575504	M24 x 180 mm	3	
3	Blade	PR0840003	Upper / Lower	2	
4	Flat Head Socket Bolt	575503	M24 x 160 mm	1	
5	Flat Head Socket Bolt	575502	M24 x 140 mm	1	
6	Flat Head Socket Bolt	658819	M24 x 130 mm	1	
7	Socket Head Bolt	575468	M24 x 110 mm	4	
8	Blade Tip	PR0840027	Left	1	
9	Blade Tip	PR0840028	Right	1	
10	Hex Nut	667220	M24	6	
11	Structural Washer	90511	M24	6	
12	Bearing	PR0840010	Upper	1	

1. Blade Kit contains all blades, fasteners and shim sets.
2. Non-serviceable item

3.2.4 Spare Parts Identification

AMS40

0840-04.00.B

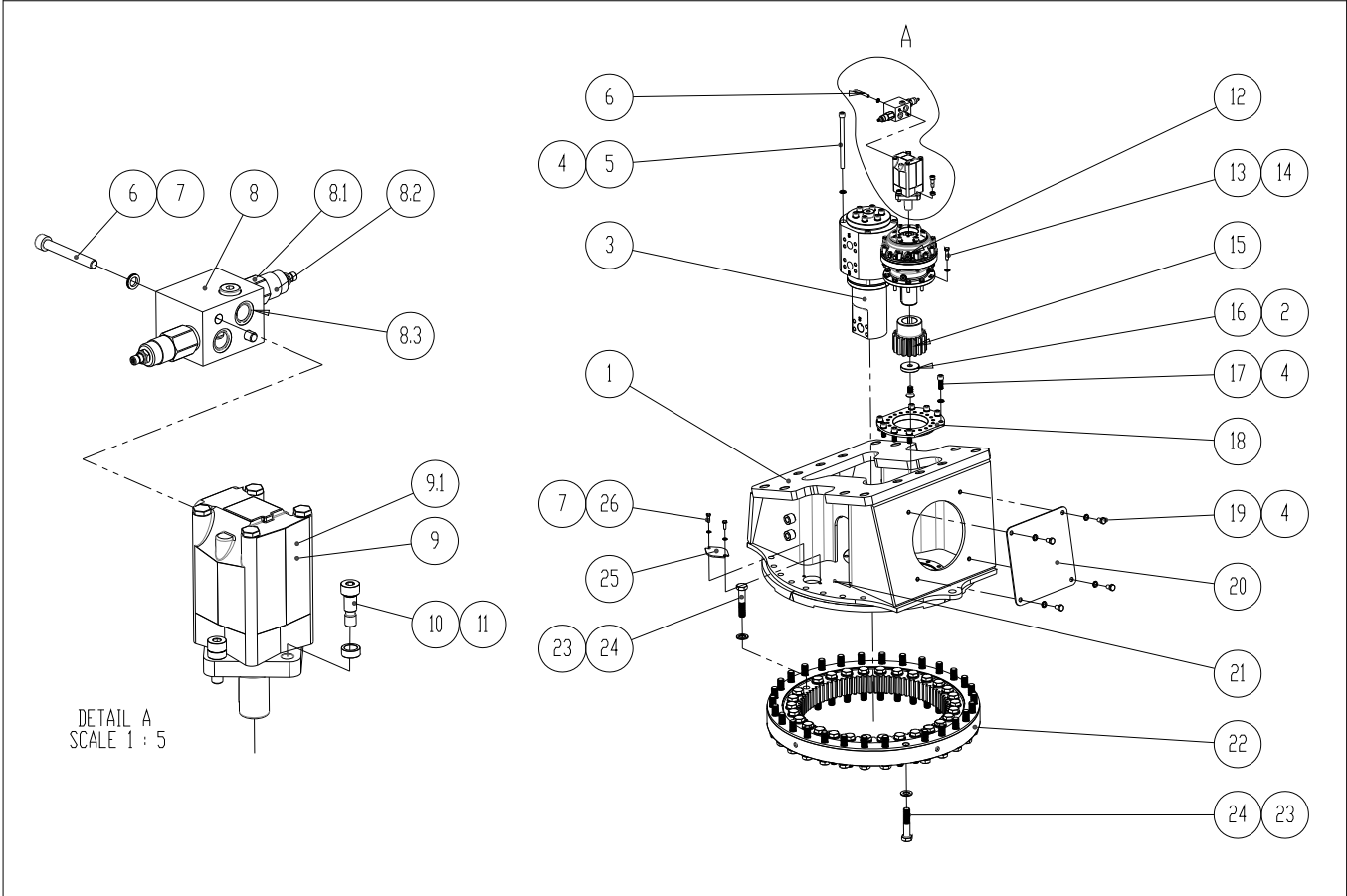


Fig. 0840-04.00.B

3.2.4 Spare Parts Identification

Table 3.8 Subhead and Rotation Assembly Fig. 0840-04.01.B

Pos	Name	Part No.	Specification	Qty	Note
1	Subhead	PR0840600		1	
2	Flat Head Socket Bolt	901287	M20 x 40 mm	1	
3	Hydraulic Swivel	ZZDD02779		1	1
4	Washer	90597	M16 (NL Pair)	16	
5	Socket Head Bolt	575505	M16 x 240 mm	4	
6	Socket Head Bolt	575839	M10 x 75 mm	2	
7	Washer	90137	M10 (NL Pair)	6	
8	Manifold	ZZHMB10421VJ25		1	
8.1	Relief Valve	ZZVBB10113BJ25	Factory set @ 170 bar	2	
8.2	Seal kit for Item 8.1	ZZDS9257725		1	
8.3	O-Ring	ZZOR02190026190		2	
9	Hydraulic Motor	ZZHM151F0502		1	
9.1	Seal kit for Item 9	ZZ.DS151F0111		1	
10	Socket Head Bolt	PR10096200101	M12 x 16 x 20 mm	4	
11	Custom Washer	PR10096200102	12 mm	4	
12	Gearbox	ZZVK0360		1	
13	Hex Head Bolt	679696	M12 x 45 mm	10	
14	Washer	91012	M12 (NL Pair)	12	
15	Pinion Gear	PR0840037		1	
16	Pinion Washer	PR0840055		1	
17	Socket Head Bolt	91005	M16 x 45 mm	8	
18	Adapter plate	PR0840056		1	
19	Hex Head Bolt	575840	M16 x 25 mm	4	
20	Cover Subhead	PR0840024		1	
21	Grease Nipple	90201		2	
22	Bearing Slewing Ring	ZZLA0910		1	
23	Structural Washer	575841	M27	60	
24	Hex Head Bolt	575842	M27 x 130 mm	60	
25	Cover	PR0840014		2	
26	Hex Head Bolt	056167	M10 x 30 mm	4	

Note 1. Refer to Table 3.10 Fig. 0840-06.00.A

3.2.5 Spare Parts Identification

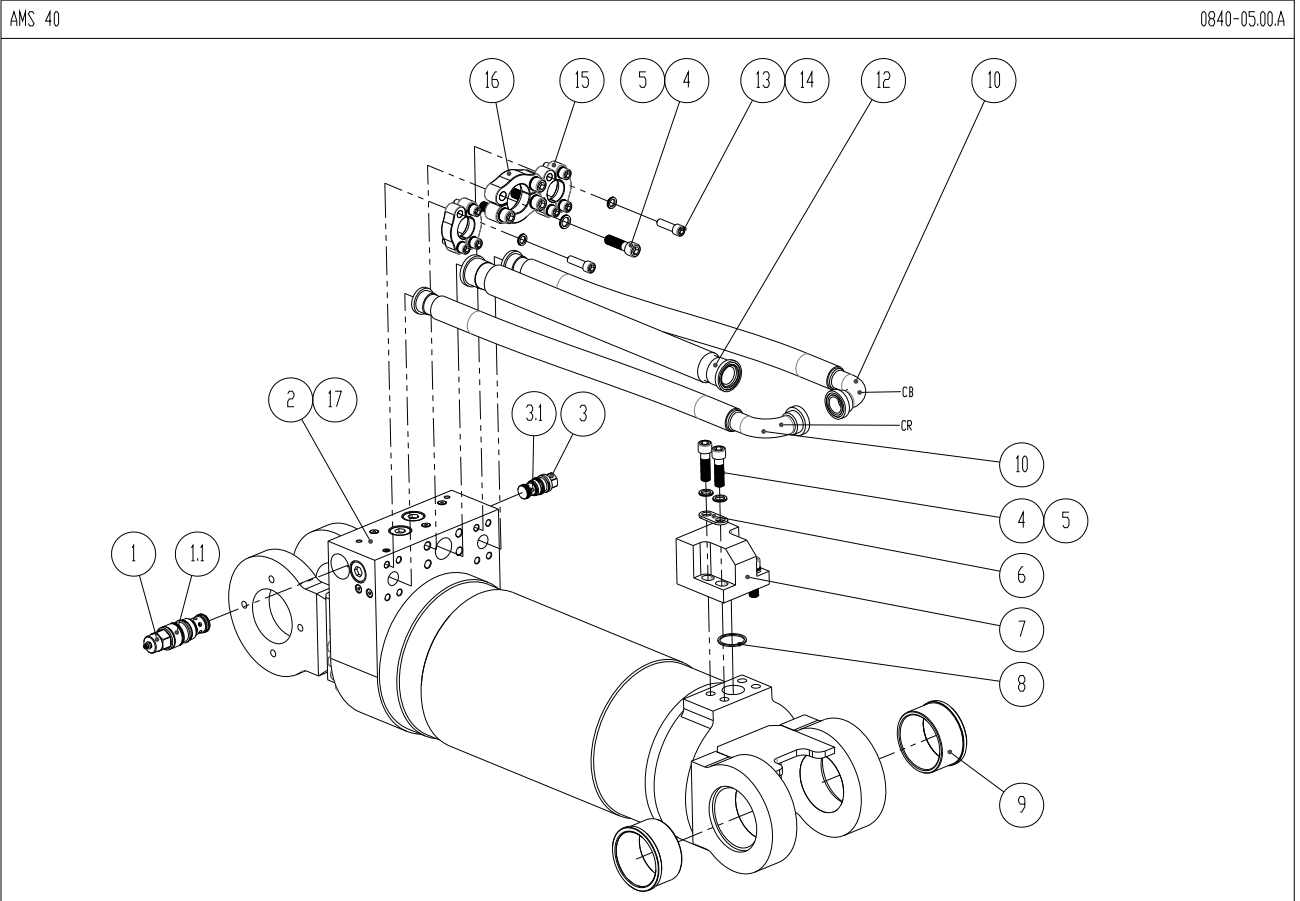


Fig. 0840-05.01.A

3.2.5 Spare Parts Identification

Table 3.9 Cylinder Assembly Fig. 0840-05.01.A

Pos	Name	Part No.	Specification	Qty	Note
1	Counterbalance valve	ZZVBA912159J25		1	
1.1	Seal Kit for Item 1	ZZDS9330047		1	
2	Hydraulic Cylinder	ZZCL03267		1	
3	Check Valve	ZZVBA912149J25		1	
3.1	Seal Kit for Item 3	ZZDS9330048		1	
4	Socket Head Bolt	951478	M20 x 70 mm	8	
5	Washer	91010	M20 (NL Pair)	8	
6	Support plate	PR0840046	SAE 2"	2	
7	Port Block	PR0840045	Rear	1	
8	O-Ring	94021		1	
9	Glide bush	ZZLA36001		2	
10	Hose	ZZSL329	CB Port, 1 ½ inch	1	1
11	Hose	ZZSL329	CR Port, 1 ½ inch	1	1
12	Hose	ZZSL330	2 inch	1	1
13	Socket Head Bolt	679037	M16 x 55 mm	8	
14	Washer	90597	M16 (NL Pair)	8	
15	Split flange	575847	1 ½ inch	4	
16	Split flange	575848	2 inch	2	
17	Seal Kit for Item 2	ZZDSAFD36001		1	

Note 1. Refer to Table 3.11 Fig. 0840-08.01.B

3.2.6 Spare Parts Identification

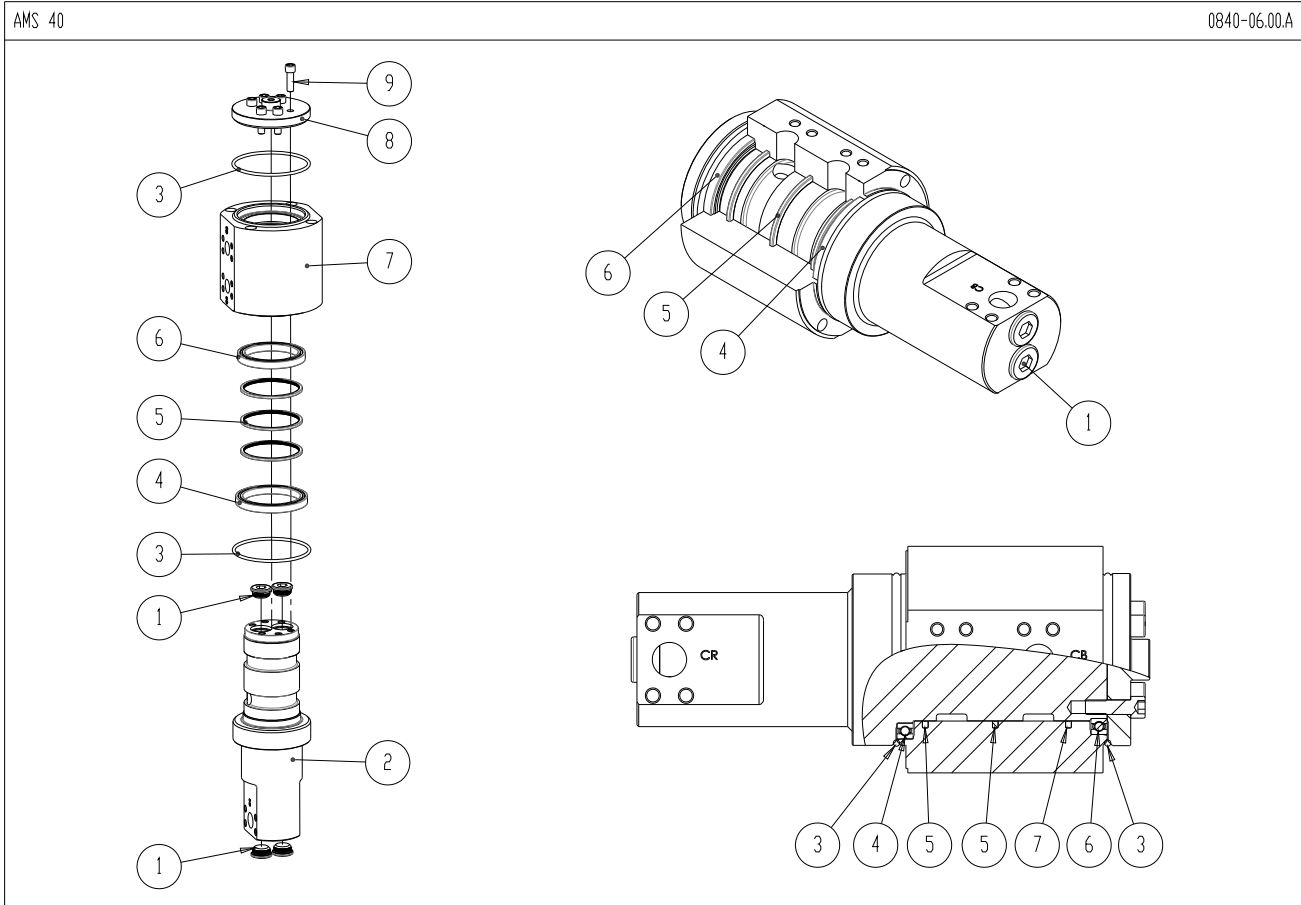


Fig. 0840-06.01.A

3.2.6 Spare Parts Identification

Table 3.10 Hydraulic Swivel Assembly Fig. 0840-06.01.A

Pos	Name	Part No.	Specification	Qty	Note
---	Seal Kit	ZZDSAFDD2051		1	1
1	Locking screw with captive seal	ZZSL7060		4	
2	Swivel stator	---		1	2
3	O-Ring	---		2	3
4	Deep groove radial ball bearing	---		1	4
5	Roto Glyd Ring	---		3	3
6	Deep groove radial ball bearing	---		1	4
7	Swivel housing	---		1	2
8	Swivel cover	---		1	2
9	Socket Head Bolt	573851	M16 x 50 mm	6	

Note 1: Seal Kit available only as a complete set. Kit contains items 3 and 5.

Note 2: Non-serviceable item

Note 3: Not available separately. Order seal kit.

Note 4: Special order. Contact Allied

3.2.7 Spare Parts Identification

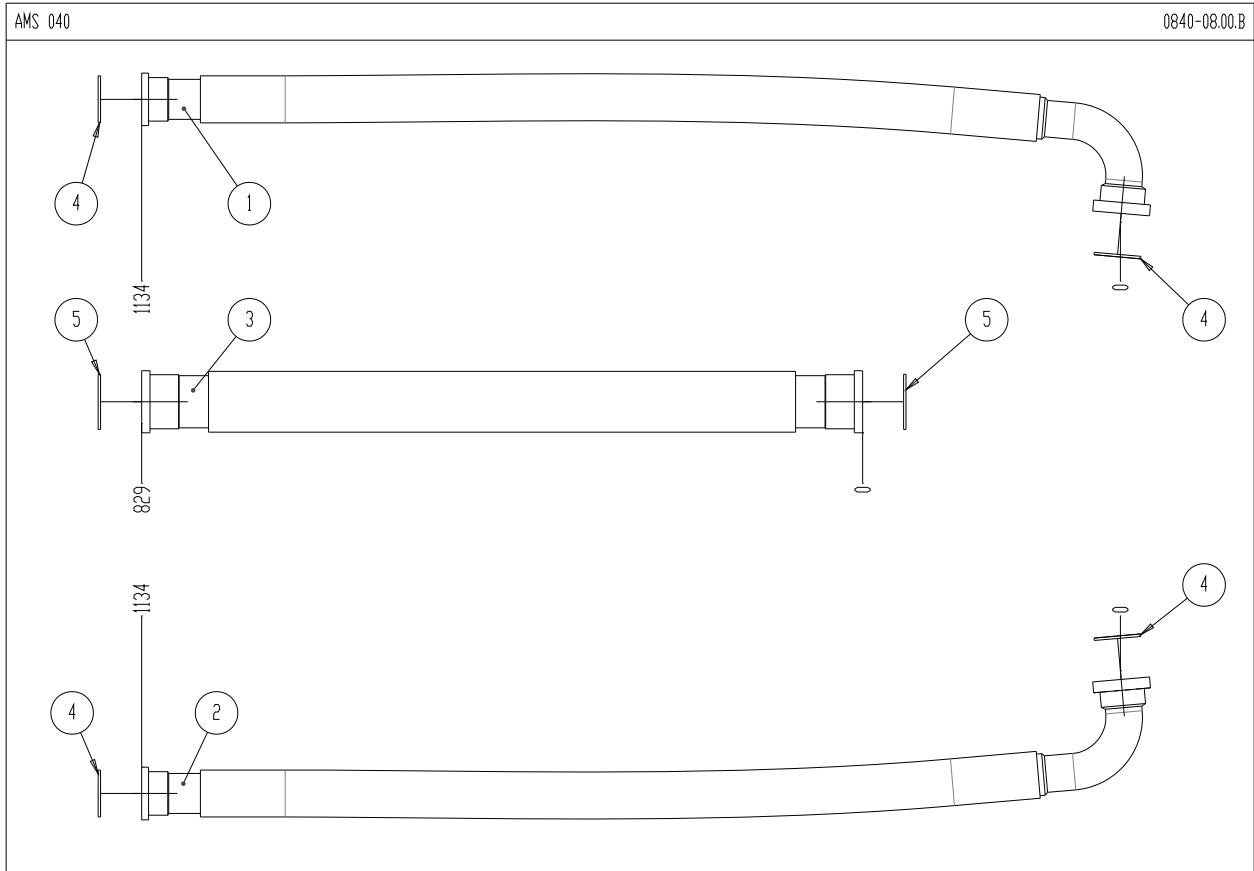


Fig. 0840-08.01.B

3.2.7 Spare Parts Identification

Table 3.11 Hydraulic Connections Fig. 0840-08.01.B

Pos	Name	Part No.	Specification	Qty	Note
1	Hose	ZZSL329	CB Port, 1 ½ inch	1	1
2	Hose	ZZSL329	CR Port, 1 ½ inch	1	1
3	Hose	ZZSL330	2 inch	1	
4	O-Ring	657364	1 ½ inch	4	
5	O-Ring	94021	2 inch	2	

Note 1. CB= Cylinder Barrel, CR= Cylinder Rod

3.2.8 Spare Parts Identification

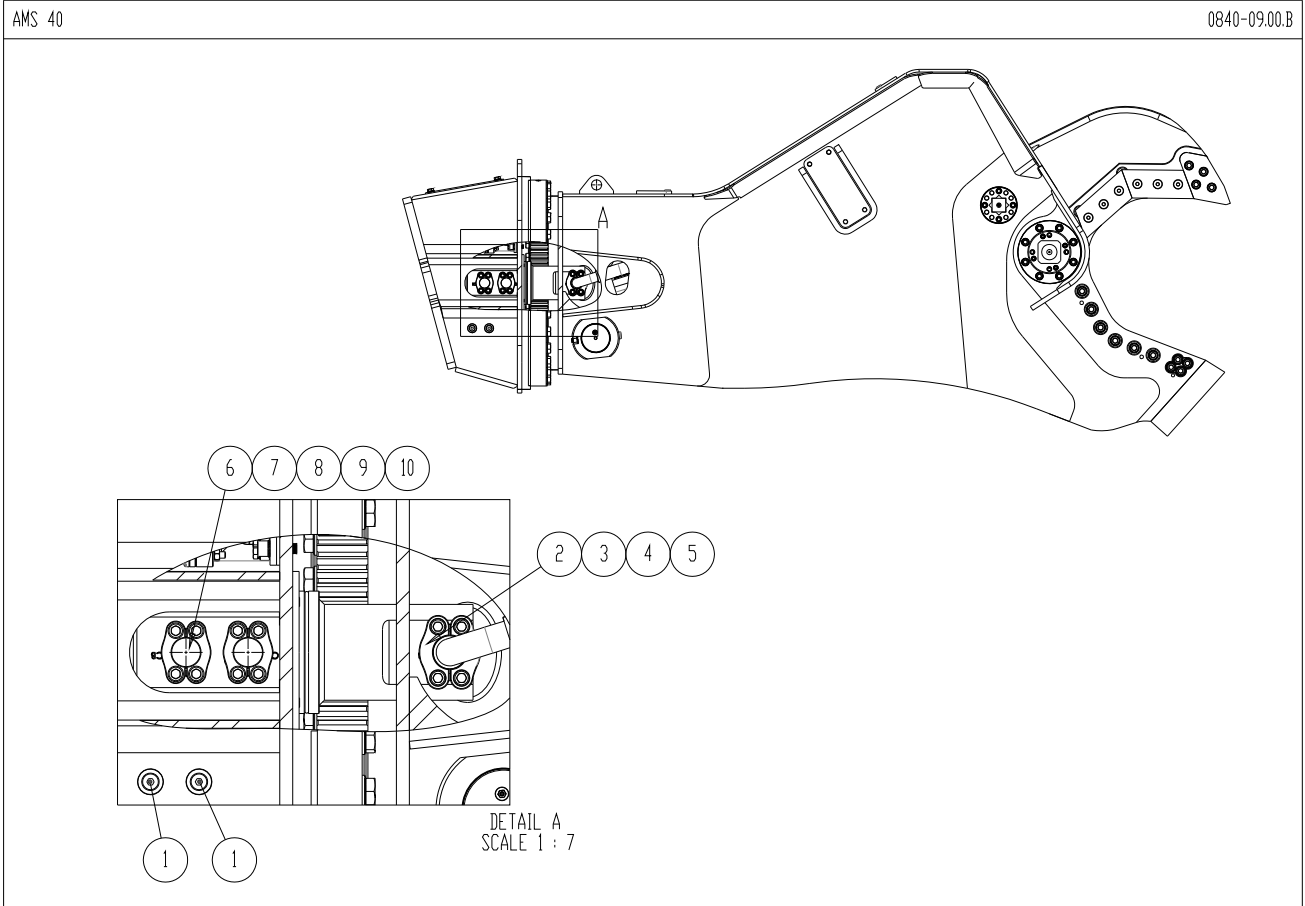


Fig. 0840-09.01.B

3.2.8 Spare Parts Identification

Table 3.12 Hydraulic Connections Fig. 0840-09.01.B

Pos	Name	Part No.	Specification	Qty	Note
1	Plug	90424	½ inch	4	
2	Split Flange	575848	1 ½ inch	4	
3	O-Ring	657364	1 ½ inch	2	
4	Socket Head Bolt	679037	M16 x 55 mm	8	
5	Washer	90597	M16 (NL Pair)	8	
6	Split Flange	053864	1 ¼ inch	4	
7	Blind Flange	817933	1 ¼ inch	4	
8	O-Ring	678594	1 ¼ inch	4	
9	Socket Head Bolt	658669	M14 x 50 mm	16	
10	Washer	678569	M14 (NL Pair)	16	

3.2.9 Spare Parts Identification

AMS40

0840-10.00.B

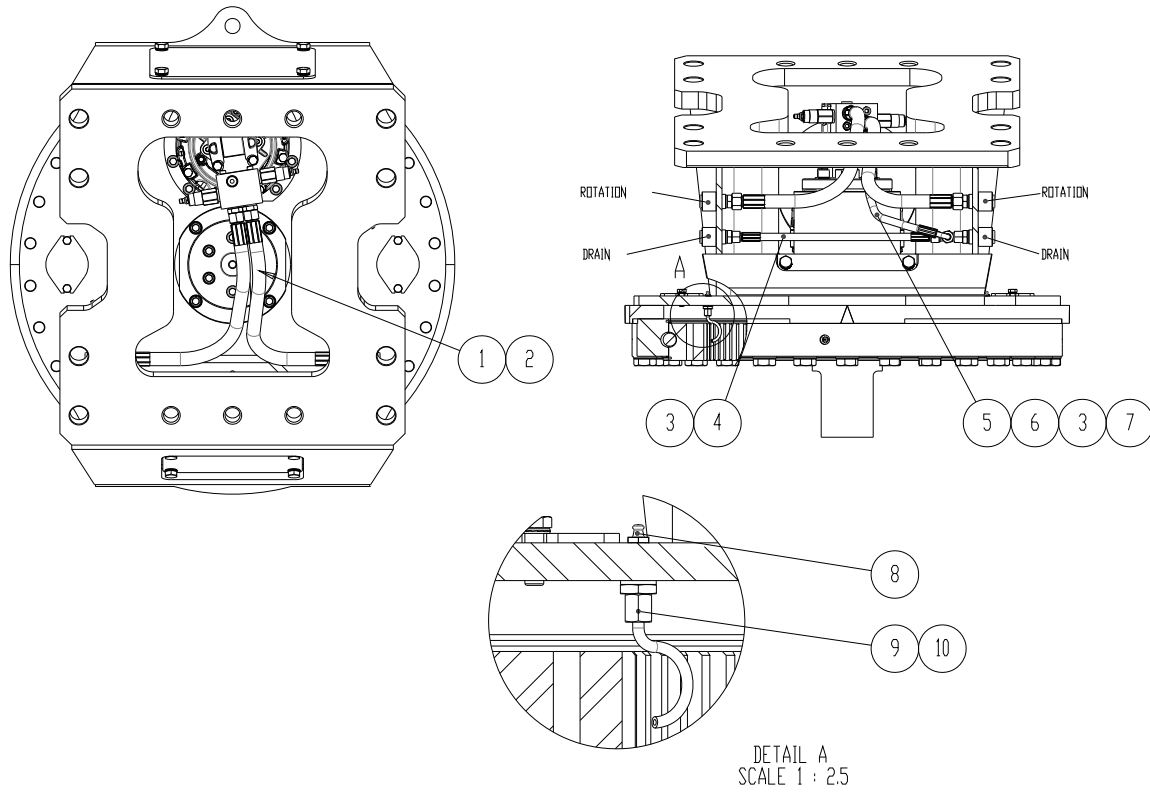


Fig. 0840-10.00.B

3.2.9 Spare Parts Identification

Table 3.13 Hydraulic Connections Inside Subhead Fig. 0840-10.00.B

Pos	Name	Part No.	Specification	Qty	Note
1	Hydraulic hose	ZZSL355		2	
2	Straight male stud fitting	ZZSL5163	GE 16 SR 1/2 ED S	4	
3	Straight male stud fitting	ZZSL5129	GE 12 SR 1/2 ED S	2	
4	Hydraulic hose	ZZSL336		1	
5	Hydraulic hose	ZZSL03		1	
6	Adjustable L-coupling	ZZSL6612	ELD 12 S	1	
7	Straight male stud fitting	ZZSL5125	GE 12 SR 1/4 ED S	1	
8	Grease fitting	ZZBM72240031180		2	
9	Straight male stud fitting	ZZSL5070	GE 06 LR	2	
10	Grease pipe		Ø6x1.5 L=80 mm - Brakeline	2	

3.2.9 How To Order Spare Parts

Product _____
 Model _____
 Serial No. _____

When ordering parts for your Allied equipment, please be prepared with the Product, Model and Serial Number. See Section 2.3 Owner's record of the equipment.

Please fill out completely

Line	Part Number	Description	Quantity	Price
1				
2				
3				
4				
5				
6				
7				
8				
9				
10				

Your contact information

Your Name _____ Company Name _____
 Phone _____ Account Number _____
 Fax _____ Purchase order _____
 Email _____ Shipping carrier _____
 See note*

Billing Address _____ Shipping Address _____

***Note: All backordered parts will be shipped when available via the same method as the original order unless initialed and checked below:**

Initials _____
 Ship complete order only
 Ship available parts and contact customer on disposition of backordered parts
 Other – specify below



3900 Kelley Avenue, Cleveland, Ohio 44114
Tel: 216-431-2600 Fax: 216-431-2601
e-mail: Sales@AlliedCP.com
website: <http://www.AlliedCP.com>