

# AR Series

## Hydraulic Impact Breaker

Model  
AR70D



**ALLIED**

### Parts Manual

Keep this manual in a convenient location so that it is easily accessible for future reference. Contact your Allied Dealer or the Allied Customer Service Department for replacement manuals. Inquiries regarding the content of this manual must include effective date shown on inside cover.



PM576759



Contact Information

Allied Construction Products, LLC  
3900 Kelley Ave  
Cleveland, Ohio 44114

E-mail: [sales@alliedcp.com](mailto:sales@alliedcp.com)  
Tel: 216-431-2600  
Fax: 216-431-2601

Allied Construction Products, LLC, reserves the right to change, edit, delete or modify the content of this document, including descriptions, illustrations and specifications without prior notification. Specifications are based on published information at the time of publication. Go to [www.alliedcp.com](http://www.alliedcp.com) for product or document updates

**Revision History of Document No. PM576759**

<u>Effective Date</u>	<u>Page</u>	<u>Summary of Change</u>
2013 Nov	17,18	Table 6.2, Fig 6-2 Quantity of item 64 was 3. Add item 65.
2013 Aug		Original Issue of 576759

**Table of Contents**

<u>Section</u>	<u>Page</u>
<b>Contact Information.....</b>	<b>i</b>
<b>Document Revisions.....</b>	<b>i</b>
<b>Table of Contents.....</b>	<b>ii</b>
<b>1.0 Introduction &amp; Scope.....</b>	<b>1</b>
1.1 Purpose of This Manual.....	1
1.2 About This Manual.....	
1.3 How to Order Replacement Manuals.....	1
1.4 Related Publications.....	1
<b>2.0 Equipment Identification.....</b>	<b>3</b>
2.1 Serial Number Location.....	3
2.2 Equipment Identification Tag.....	3
2.3 Owner's Record of the Equipment.....	3
<b>3.0 Safety &amp; Information Labels.....</b>	<b>4</b>
<b>4.0 Spare Parts Identification.....</b>	<b>7</b>
4.1 Housing Plates and Hardware.....	7
4.2 Breaker Assembly.....	9
4.3 Hydraulic Connections.....	15
<b>5.0 Tool Selection Guide.....</b>	<b>16</b>
5.1 Standard Tools.....	16
5.2 Specialty Tools.....	16
5.3 Chisel Paste.....	17
<b>6.0 Service Kits and Tools.....</b>	<b>18</b>
6.1 Tune-Up Kit.....	18
6.2 Seal Set.....	19
6.3 Accumulator N2 Gas Charge Tool Kit...	21
<b>7.0 Mounting to the Carrier.....</b>	<b>22</b>
7.1 Mounting Brackets.....	22
<b>8.0 How To Order Spare Parts.....</b>	<b>23</b>

<u>List of Figures</u>	<u>Page</u>
2-1 Location of Equipment ID Tag .....	3
2-2 Equipment Identification Tag.....	3
3-1 thru 3-14 Safety & Information Labels.....	4
3-15 Location of Labels on Equipment.....	6
4-1 Housing Box & Components.....	7
4-2 Breaker Assembly.....	9
4-3 Hydraulic Connections.....	13
5-1 Standard & Specialty Tools.....	14
5-2 Tool Diameter & Working Length.....	14
6-1 Tune-up Kit.....	16
6-2 Seal Positions.....	17
6-3 Accumulator N2 Gas Charge Tool Kit....	21
7-1 Mounting Bracket - Typical .....	20
7-2 Housing Plates.....	20
7-2 Mounting Connection Plate Family.....	20

## 1.0 Introduction

### 1.1 Purpose and Scope of This Manual

The material in this manual has been prepared in support of the product named in Table 1.1. It's intended solely for use with the product identified in Table 1.1 and may not be suitable for other models.

Materials presented in this manual, including figures, captions, descriptions and parts tables may show equipment that is optional. Figures depict views that are intended for parts identification and not for purposes of repair or service of the product. Parts Manuals do not include safety precautions or procedures for operation.

How to use this Manual:

- Assembly components are identified with the aid of figures, figure captions, item key, part name and quantity. When necessary, remarks and specifications further enhance part description.
- To assist you, a parts order form is provided at the back of this manual

Prior to ordering parts, confirm that the information recorded on the equipment's identification label corresponds with Table 1.1. For the location of this label, refer to Section 2.0 of this manual.

Table 1.1 About This Manual



Document ID. No.	PM576759
Type	Spare Parts
Current Status	See Inside Cover
Product Name:	Mounted Hydraulic Impact Breaker
Series	AR
Applicable Model[s]:	AR70D
Years of Manufacture:	2013 & above
*Inquiries regarding this manual must include effective date shown on inside cover	

The publication identified in Table 1.1 was created solely for information purposes and should not be considered all-inclusive. If further information is required, contact your local Allied dealer or the Allied Customer Service Department.

The content of this document has been reviewed for accuracy. Allied Construction Products, LLC has endeavored to deliver the highest degree of accuracy and every effort has made to provide information as complete and accurate as possible. However, continuous improvement of our products is an Allied policy. The material in this publication, including figures, captions, descriptions, remarks and specifications, describe the product at the time of its release, and may not reflect the product in the future. A summary of changes made to the content of this document are recorded on the inside cover.

### 1.2 How To Order Replacement Publications

This manual is an integral part of this product. Keep it in a convenient location so that it is easily accessible for future reference. If replacement manuals are required, they may be ordered by contacting your Allied dealer service center. Manuals may also be viewed and downloaded at: [www.alliedcp.com](http://www.alliedcp.com)

### 1.3 Related Publications

Allied Construction Products, LLC offers the following publications for the product identified in Table 1.1.

#### 1.3.1 Safety, Operation & Maintenance Manual

SOM576760 for AR-Series AR70D – AR95B

The Safety, Operation and Maintenance Manual has been prepared to assist the operator and maintenance personnel with the information necessary for the safe and proper use of the Allied work tool.

Content includes:

Safety Information  
 Equipment Serial Number and Model Identification  
 Technical Data (Weight & dimensions)  
 Basic Guidelines for Installation and Set-up  
 Pre-Operation Inspection  
 How to Operate the Allied Work Tool  
 Maintenance Schedule  
 N2 Gas Charging Instructions  
 Tool and Guide Bushing – Lubrication, Inspection,  
 Wear Limits and Replacement  
 Troubleshooting  
 Removal From Carrier, Transporting, Lifting &  
 Storage

## 1.0 Introduction and Scope – [cont'd]

### 1.3 Related Publications – cont'd

#### 1.3.2 Repair Manual

The Repair Manual has been prepared to assist the Service Technician with the information necessary for the disassembly & reassembly of the Breaker. Content includes:

- Safety Information
- Disassembly & Reassembly
- Bolt Torque Specifications
- Wear Limits of Parts
- Accumulator N2 Gas Charging Instructions
- Bushing Replacement

#### 1.3.3 AEM Safety Manual for Hydraulic Breakers

The Association of Equipment Manufacturers offers a safety manual designed for operators and maintenance personnel of hydraulic mounted breakers. The manual is available in Spanish, French and English. It is published in an illustrated format of sensible do's and don'ts, featuring typical daily situations on the job site. Content includes safety tips concerning the workplace and equipment, start up and shut down guidelines and special operating and maintenance precautions.

This publication is available by contacting:

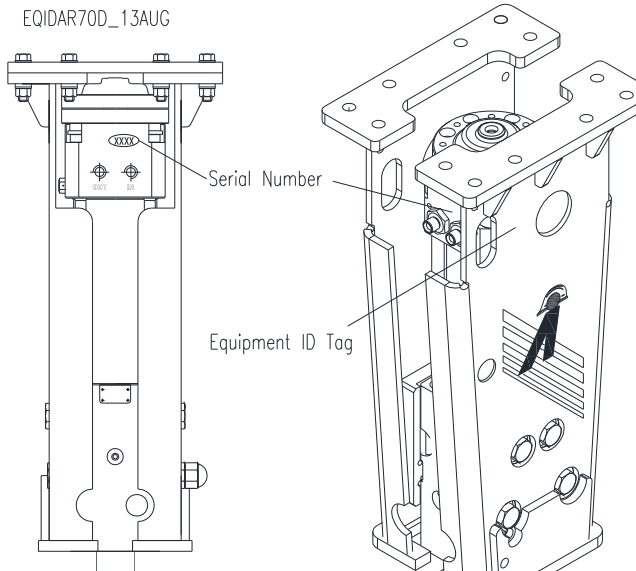
Association of Equipment Manufacturers  
Toll free 1-866-AEM-0442  
E-mail: [aem@aem.org](mailto:aem@aem.org)  
Website: [www.aem.org](http://www.aem.org)

Ask for FORM CMHB-1004, Hydraulic Mounted Breakers.

This publication is also available through Allied under part number 953076 (English). To order a copy, contact the Allied Customer Service Department.

## 2.0 Equipment Identification

### 2.1 Equipment Identification



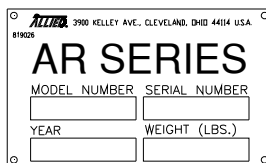
**Fig 2-1 Model and Serial Number Location**

Refer to Figure 2-1. The Serial Number assigned to this equipment can be found in the following locations:

1. Located on the Equipment Identification Tag
2. On the Valve Housing Near [IN] [OUT] Ports

### 2.2 Equipment Identification Tag

The Equipment Identification Tag is affixed to the side of the housing.



**Fig 2-2 Equipment Identification Tag**

The ID Tag provides the following information:

- Allied Logo
- Street Address, City, State - USA
- Product name
- Model number
- Serial number
- Year of manufacture
- Weight

Confirm that the information contained on the Tag corresponds with the information provided in Section 1, Table 1.1.

### 2.3 Owner's Record of the Equipment

Your local Allied dealer requires complete information about the equipment to better assist you with questions regarding parts, warranty, operation, maintenance, or repair.

- Copy the Model and Serial Number from the Equipment Identification Tag to the space provided below.
- Indicate the date in which the Allied equipment was placed into service.
- Return completed Warranty Registration form to Allied Construction Products, LLC.

Product Name: Hydraulic Breaker

Series: AR

Model: AR70D

Part Number: 576719

Serial Number: \_\_\_\_\_

In Service Date: \_\_\_\_\_

Registration Date \_\_\_\_\_




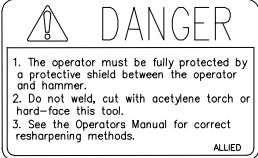


### 3.0 Safety, Information & Identification Labels

#### 3.1 Label Description and Location On Equipment

Labels affixed to the Allied equipment communicate important information. Safety labels alert personnel of potential hazards, while other labels provide product identification and instructions important to operation and service.

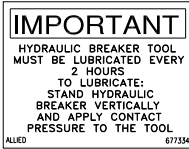
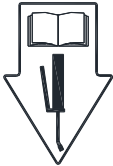


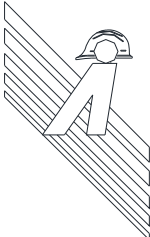
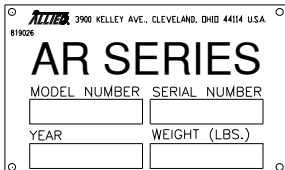
Keep labels clean. Words and illustrations must be legible. Replace damaged or missing labels before operating this equipment. Refer to Table 3.2 for ordering information. Refer to Figure 3-15 for the placement of the label on the equipment.

**Table 3.1 Label Description**

Figure	Label	Description
3-1		<b>Read The Manual</b> - Safety Alert Symbol with pictogram of open book. Gives notice of the importance of reading the manual(s) for information and/or instructions.
3-2		<b>Keep Clear</b> - Pictogram displays arrow distancing worker safely from recognized hazard which is represented by the box. Breakers, or any other work tool, pose risk of injury to workers if they are not kept at a safe distance. Never operate the work tool with workers inside the work zone.
3-3		<b>Flying Debris Hazard</b> – Alerts personnel to the hazard of fragments becoming projectiles. A protective guard to shield the operator must be installed before operation of the breaker. Personnel are directed to the Operator’s Manual for safety instructions. <b>NOTE: A smaller sized version of this decal is to be displayed in a conspicuous location inside the operator’s cab.</b>
3-4		<b>Personal Protection Equipment / Tool Re-sharpening</b> – Alerts personnel to provide protective shielding between the operator and breaker. It also warns against welding, cutting, or hard-facing the tool. Personnel are directed to the Operator’s Manual for approved re-sharpening methods.
3-5		<b>Pressurized Nitrogen Accumulator</b> – Alerts personnel to the accumulator, warning of nitrogen gas under pressure. Directs personnel to the Operation and Maintenance Manual for service instructions.
3-6	---	---
3-7		<b>Lift Point</b> – Pictogram of hook identifies approved lift points.

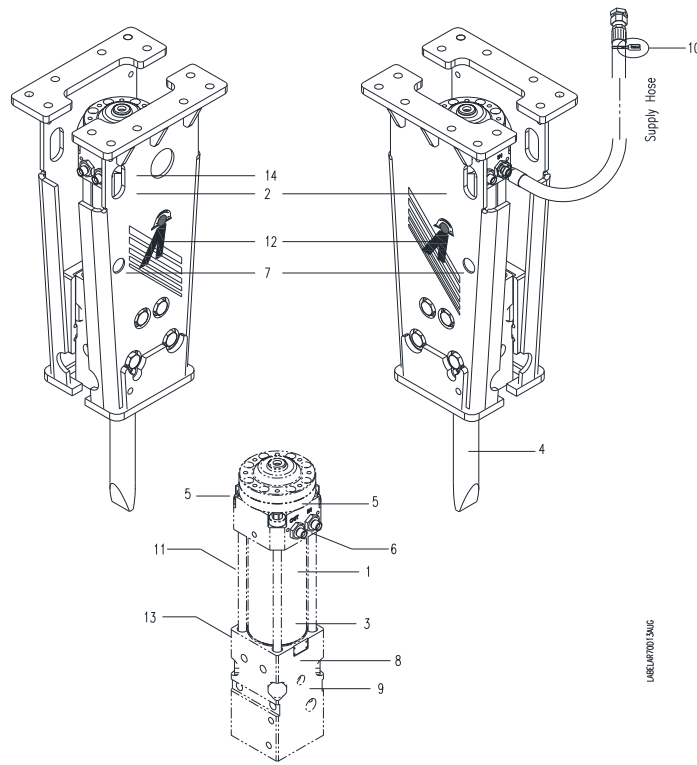
**3.0 Safety, Information & Identification Labels**

**Table 3.1 Label Description**

Figure	Label	Description
3-8		<p><b>LUBRICATION</b> – Decal provides re-lubrication frequency. Risk of equipment damage through unapproved methods. Strict attention to all procedures must be followed. Stand breaker upright with contact pressure applied at tool. OK to lube.</p>
3-9		<p><b>Lubrication Point</b> – Pictogram of instruction manual and grease gun is used to identify lubrication points. Read the manual(s) for application instructions, grease type and re-lubrication schedule.</p>
3-10		<p><b>OIL SUPPLY LINE “PRESSURE” I.D. TAG</b> – A red colored cable tie marked “PRESSURE LINE” is attached to the supply hose for ease of identification between hoses.</p>
3-11		<p><b>ALLIED LOGO</b> – This decal is the Allied brand identifier and is a registered trademark of Allied Construction Products, LLC.</p>
3-12		<p>Allied “A” with Hard Hat and Background Stripes</p>
3-13	<p><b>AR70D</b></p>	<p><b>MODEL</b> – Decal identifies the series and specific model.</p>
3-14		<p><b>ID TAG</b> - Contains identifying information about the equipment, including: Manufacturer's name, address, product name, model number, serial number, year of manufacture, and weight.</p>



**3.0 Safety, Information & Identification Labels**

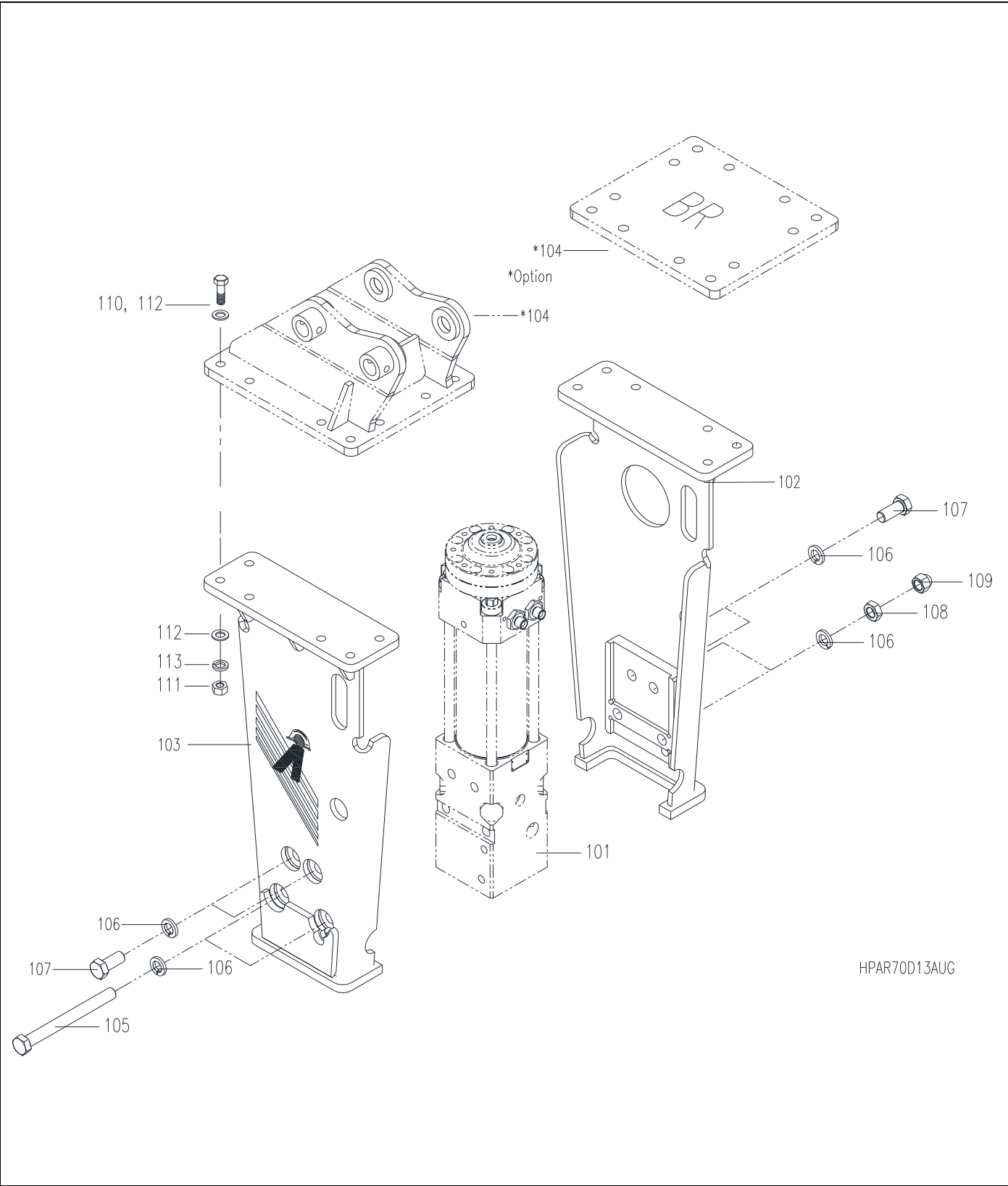


**Fig. 3-15 Label Placement on Equipment**

**Table 3.2 Decal Set**

Item	Description	Part No.	Qty	Remarks / Specifications
---	<b>Label Set</b>	<b>576724</b>	<b>1-Set</b>	<b>Set includes 1-13</b>
1	Decal – Read Manual / Instructions	676984	1	
2	Decal – Stay Clear	657841	2	
3	Decal – Danger	657839	1	Place in conspicuous location inside cab
4	Decal – Tool Sharpening	657838	1	
5	Decal – Warning Pressurized Accumulator	102756	2	
6	---	---	---	
7	Decal – Lift Point	676982	1	
8	Decal – Lube w/ Tool In	677334	1	
9	Decal - Lubrication Points	A101725	1	
10	Tag – Pressure ID	818676	1	Attach to pressure line
11	Decal – Allied	576287	1	
12	Decal – Allied “A” with Hard Hat / Stripes	576278	2	
13	Decal – Model AR70D	576760	1	
14	Tag - Equipment ID	819026	1	Item 14 not included in SET

4.0 Parts Information



HPAR70D13AUG

Fig. 4-1 Housing Plates & Hardware

**4.0 Parts Information – [cont'd]**

**Table 4.1 Housing Plates (\*Standard Configuration)**

Item	Description	Part No.	Qty	Remarks / Specifications
---	AR070D Breaker	576719	---	Standard BR Configuration
101	Hammer Ass'y	-	1	
102	Housing Plate - RH	B0504110	1	
103	Housing Plate – LH	B0504120	1	
104	Mtg Brkt / Base Plate - BR	Varies	---	Not included – Order separately. Section 7
105	Hex Head Bolt	658526	2	
106	Washer	658529	8	
107	Bolt	576762	4	
108	Nut	667220	2	
109	Cap Nut	658530	2	
110	Bolt, Washer, Nut	---	---	110,111,112,113 Refer to Table 7.1

4.0 Parts Information – [cont'd]

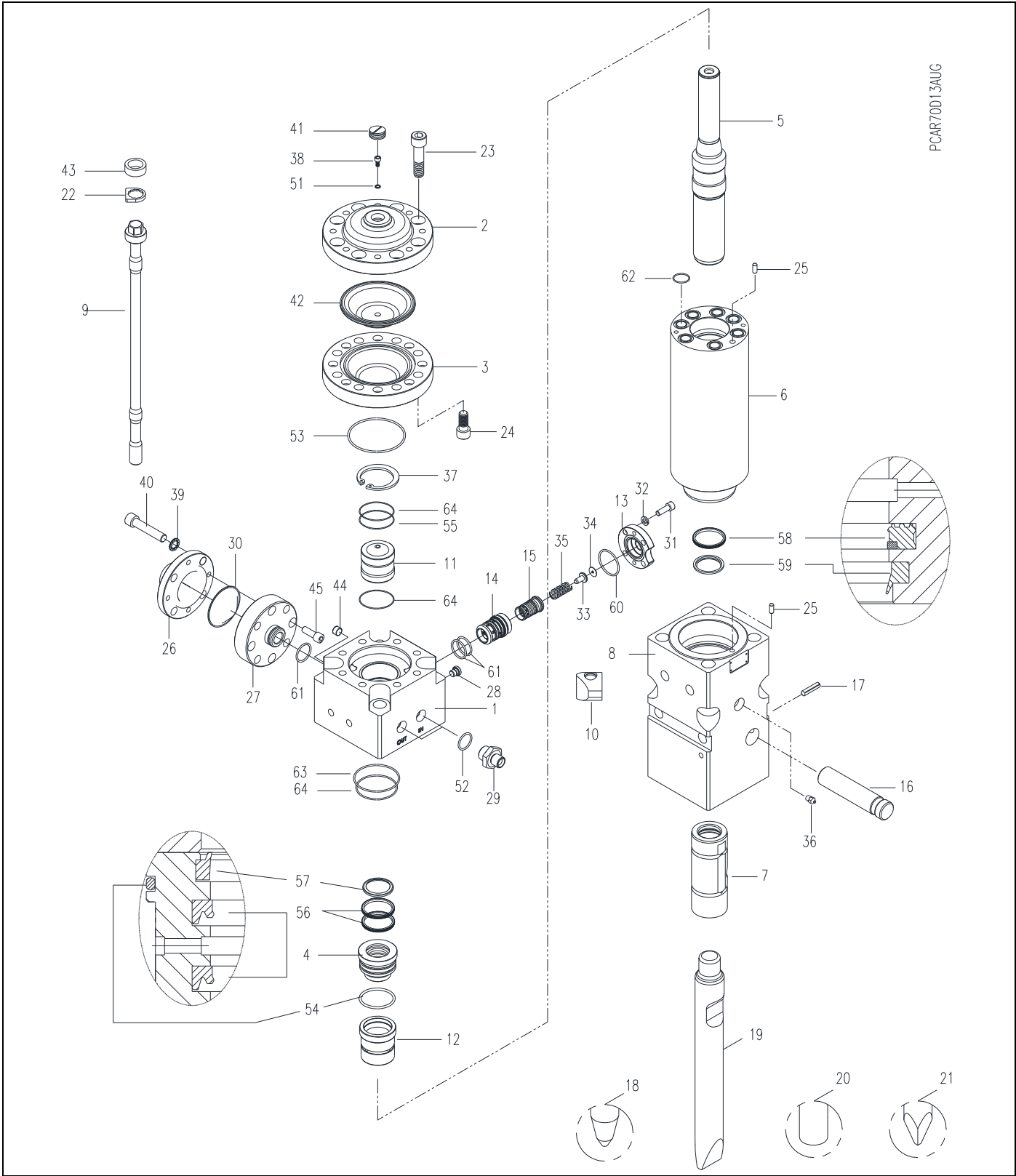


Fig. 4-2 Breaker Assembly

**4.0 Parts Information – [cont'd]****Table 4.2 Breaker Assembly**

Item	Description	Part No.	Qty	Remarks / Specifications
1	V/V Housing	B0506300	1	
2	Accumulator Cover – 1	676155	1	
3	Accumulator Bottom - 1	B0506030	1	
4	Seal Housing	B0506330	1	
5	Piston	B0506320	1	
6	Cylinder	B0506310	1	
7	Tool Bushing	B0506070	1	
8	Front Head	B0506090	1	
9	Side Rod	B0506350	4	
10	Side Rod Nut	B0506110	4	
11	In Cover Bushing	B0506390	1	
12	Distributor	B0506340	1	
13	Oper. V/V Cover	676230	1	
14	Oper. V/V Guide	B0506180	1	
15	Oper. V/V Spool	B0506190	1	
16	Tool Pin	B0506200	1	
17	Spring Pin	658870	1	
18	Tool Selection	Varies	1	18,19,20,21 Refer to Section 5
22	Lock Washer	676168	4	
23	Bolt - Accum. Cover -1	676163	8	
24	Bolt - Accum. Bottom -1	676164	8	
25	Guide Pin	676183	2	
26	Accumulator Cover - 2	B0506370	1	
27	Accumulator Bottom - 2	B0506360	1	
28	Flange Plug	676159	1	
29	Adapter	667710	2	
30	Accum. Membrane - 2	B0506380	1	
31	Socket Head Bolt	940587	4	
32	C/Washer	571053	4	
33	Oper. V/V S/Guide	676228	1	
34	Oper. Shim Plate	676229	1	
35	Oper. V/V Spring	B1306370	1	

4.0 Parts Information – [cont'd]

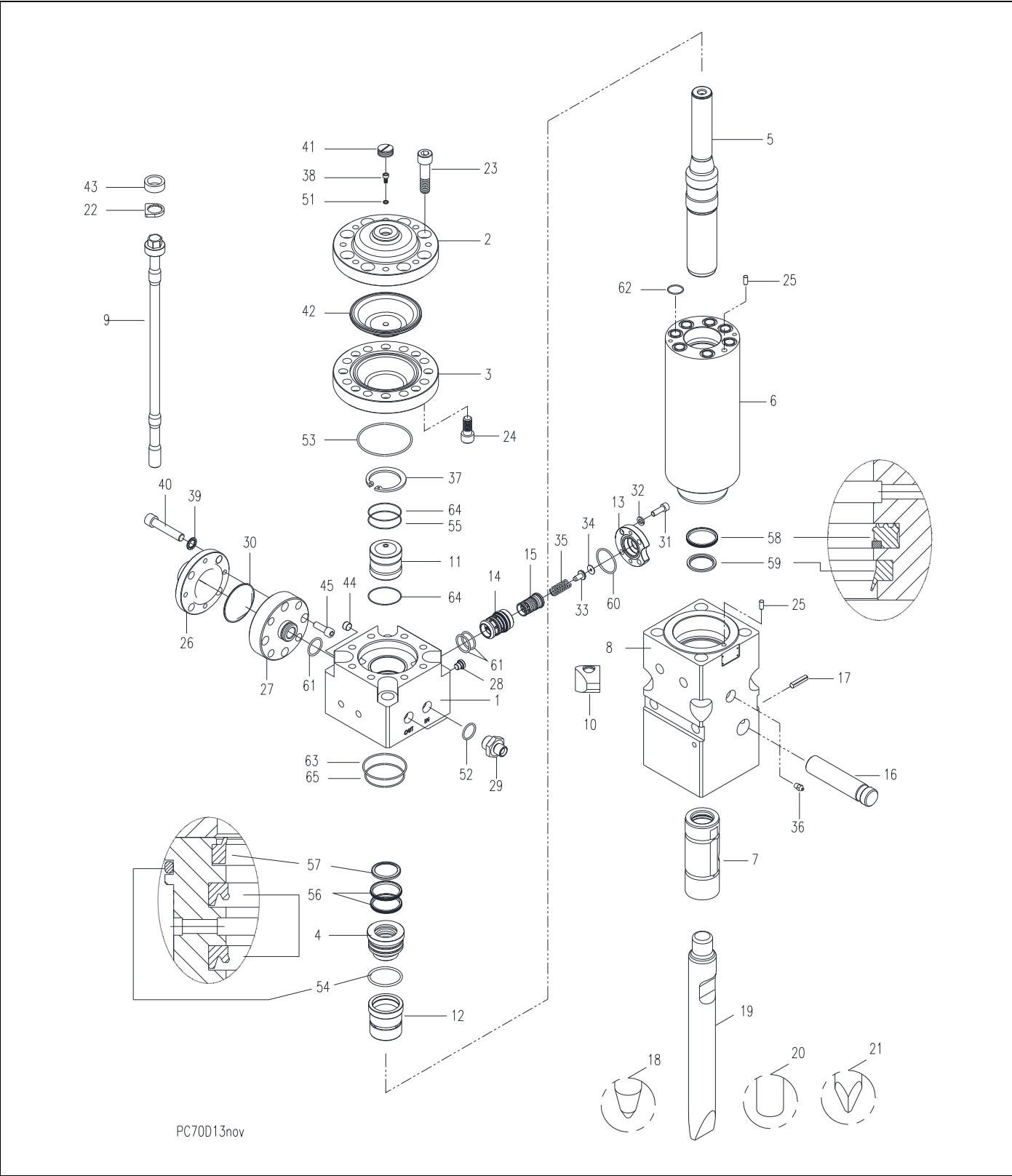
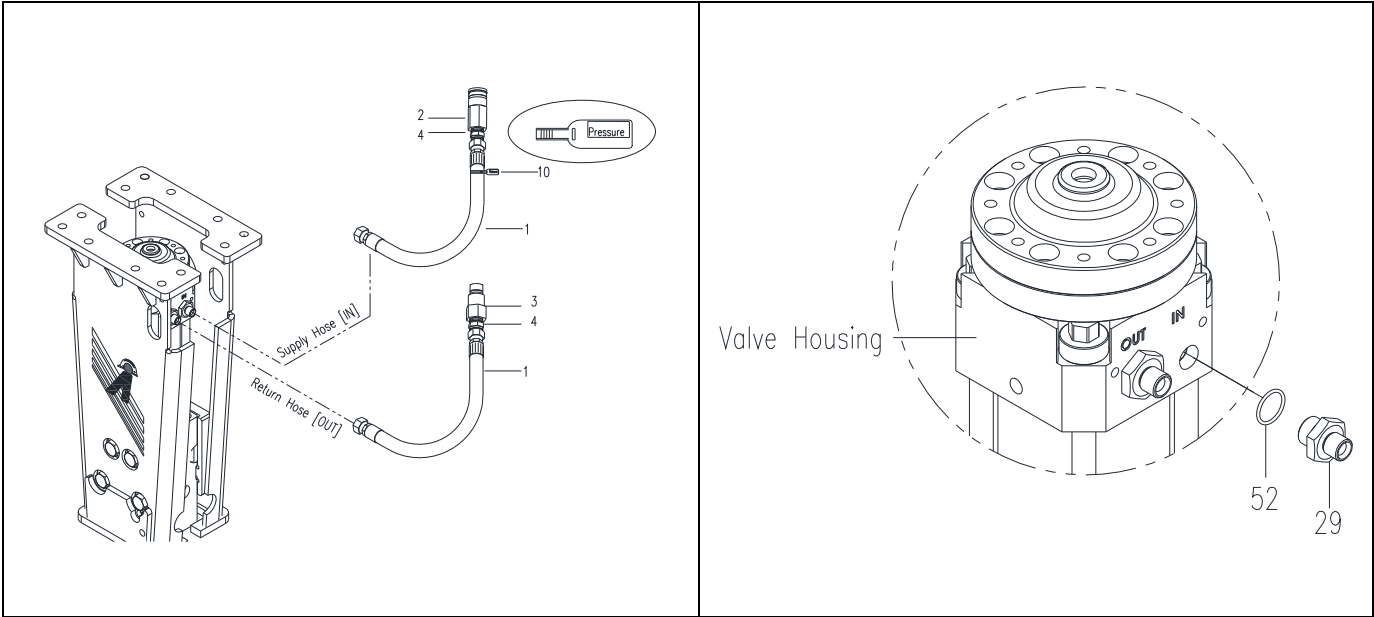


Fig. 4-2 Breaker Assembly

**4.0 Parts Information – [cont'd]****Table 4.2 Breaker Assembly - (cont'd)**

Item	Description	Part No.	Qty	Remarks / Specifications
36	Grease Nipple	816675	2	
37	Snap Ring	B0506430	1	
38	Accum. Gas Bolt	676161	1	
39	Lock Washer	90597	8	
40	Socket Head Bolt Accum. Cover	576763	4	
41	Accum. Cap	676157	1	
42	Accum Membrane - 1	676162	1	
43	Rubber Ring	676169	4	
44	Plug	659147	1	
45	Socket Head Bolt Accum. Bottom	576764	4	
51	Usit Ring	676201	1	
52	O-Ring	676204	2	
53	O-Ring	A1007010	1	
54	O-Ring	676248	1	
55	Back Up Ring	B0507020	1	
56	U-Packing	B0507030	2	
57	Wiper	B0507040	1	
58	U-Packing	B0507050	1	
59	Wiper	B0507060	1	
60	O-Ring	676251	1	
61	O-Ring	676206	3	
62	O-Ring	B0507080	7	
63	Back Up Ring	B0507070	1	
64	O-Ring	A2507310	2	
65	O-Ring	676203	1	

**4.0 Parts Information – [cont'd]**



**Fig. 4-3 Hydraulic Connections – Standard Configuration**

**Table 4.3 Hydraulic Connections (\*Standard Configuration Shown)**

Item	Description	Part No.	Qty	Remarks / Specifications
1	Hose	656829	2	
2	QD – Socket	670007	1	
3	QD - Plug	670008	1	
4	Adapter	798120	2	
10	ID Tag – "PRESSURE"	818676	1	
29	Adapter	667710	2	
52	O-Ring	676204	2	



## 5.0 Tool Selection Guide

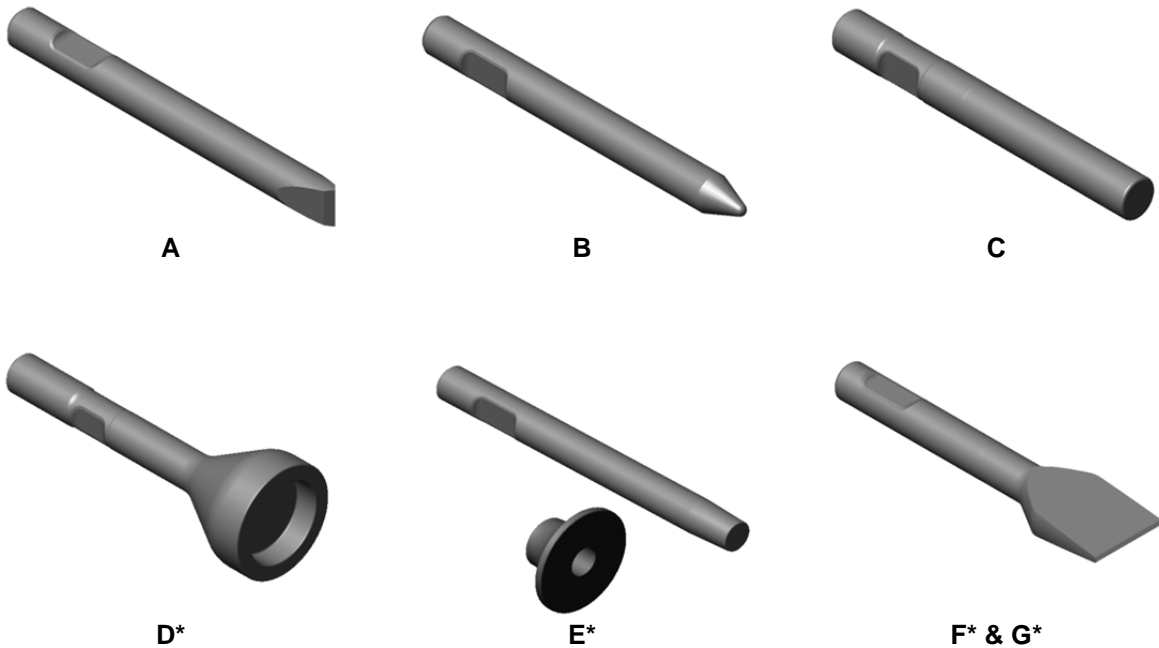
### 5.1 Standard Tools

The three most commonly used tools for concrete demolition, rock cutting and boulder reduction are the Chisel, Conical and Blunt.

**A. Chisel (Wedge – Cross Cut or In-Line) –** Suitable applications include soft rock and general demolition of concrete. The tool penetrates into the material, forcing it to separate. Useful when cutting action is required, e.g. benching and trenching.

**B. Conical Point –** Same applications as the chisel. The conical tool also penetrates, but unlike the chisel, the rounded shape resists twisting that can cause burring in the tool's retainer pin area.

**C. Blunt Tool –** Designed for impact breaking. The blunt tool is effective in secondary breaking of oversize rock or boulder reduction.

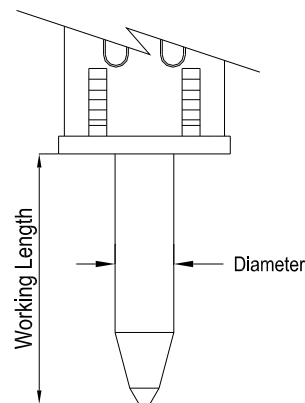


**Fig. 5-1 Standard and Specialty Tools**  
(\*Shown are general illustrations. Actual tool design may vary)

### 5.2 Specialty Tools (\*Not available for all models).

Specialty tools have a specific purpose or function designed into each tool. These tools can extend the versatility of a breaker, thus increasing productivity and eliminating the need for additional equipment.

- D. Post Driver –** For driving posts, pipes, etc.
- E. Tamper –** Designed to compact loose material.
- F. Frost Cutter –** For cutting into frozen ground.
- G. Asphalt Cutter –** Designed to cut seams in asphalt for removal. Useful when removing asphalt to dig a trench. Available in Cross-Cut and In-Line configurations.



**Fig. 5-2 Tool Diameter & Working Length**

## 5.0 Tool Selection Guide

**Table 5.1 Standard Tools**

Item	Description	Part No.	TD <sup>3)</sup> x WL <sup>4)</sup> in. (mm)	Weight – lbs. (kg)
34-B	Conical Point	576733	2.75 [70] x 17.2 (438)	41 (18.5)
<b>35-A<sup>1</sup></b>	<b>Chisel Cross Cut</b>	<b>576706</b>	2.75 [70] x 17.2 (438)	<b>39.5 (18)</b>
---	Chisel In-Line	--- <sup>2</sup>	---	---
36-C	Blunt End	--- <sup>2</sup>	2.75 [70] x 17.2 (438)	37 (16.8)
37	Pyramid (Not Pictured)	--- <sup>2</sup>	2.75 [70] x 17.2 (438)	38 (17.3)

<sup>1)</sup> **Standard tool supplied with breaker**

<sup>2)</sup> For availability of tool types not listed, contact Allied

<sup>3)</sup> TD - Tool Diameter

<sup>4)</sup> WL - Working Length

### 5.3 Allied Chisel Paste

A key element in improving the wear resistance of the bushing and tool is through the regular use of a high-quality lubricant. Allied Chisel Paste is a "specialty" lubricant, formulated for use in heavy loaded, sliding (reciprocating) motion and high heat applications. Allied Chisel Paste performs exceptionally well in this application because of its "unique blend" of liquid and solid lubricants.

Solid lubricants, which include particles of molybdenum, copper and graphite, form a highly effective structure that resist against being squeezed out during heavy side loading.

Typically, grease types labeled "General / Multi-Purpose" are unlikely to contain solid lubricants. When the tool is side loaded against the bushing, the liquid lubricant is completely squeezed out. The result is metal-to-metal contact, which quickly leads to friction related wear and damage.

### 5.3.1 Packaging & Ordering Information

**Table 5.2 Chisel Paste**

Container	Packaging	Part No.
14.5 oz. Cartridge*	Qty x 10	574430
14.5 oz. Cartridge*	Qty x 30	574431
35 lbs. Bucket	Qty x 1	676698
120 lbs. Drum	Qty x 1	679968

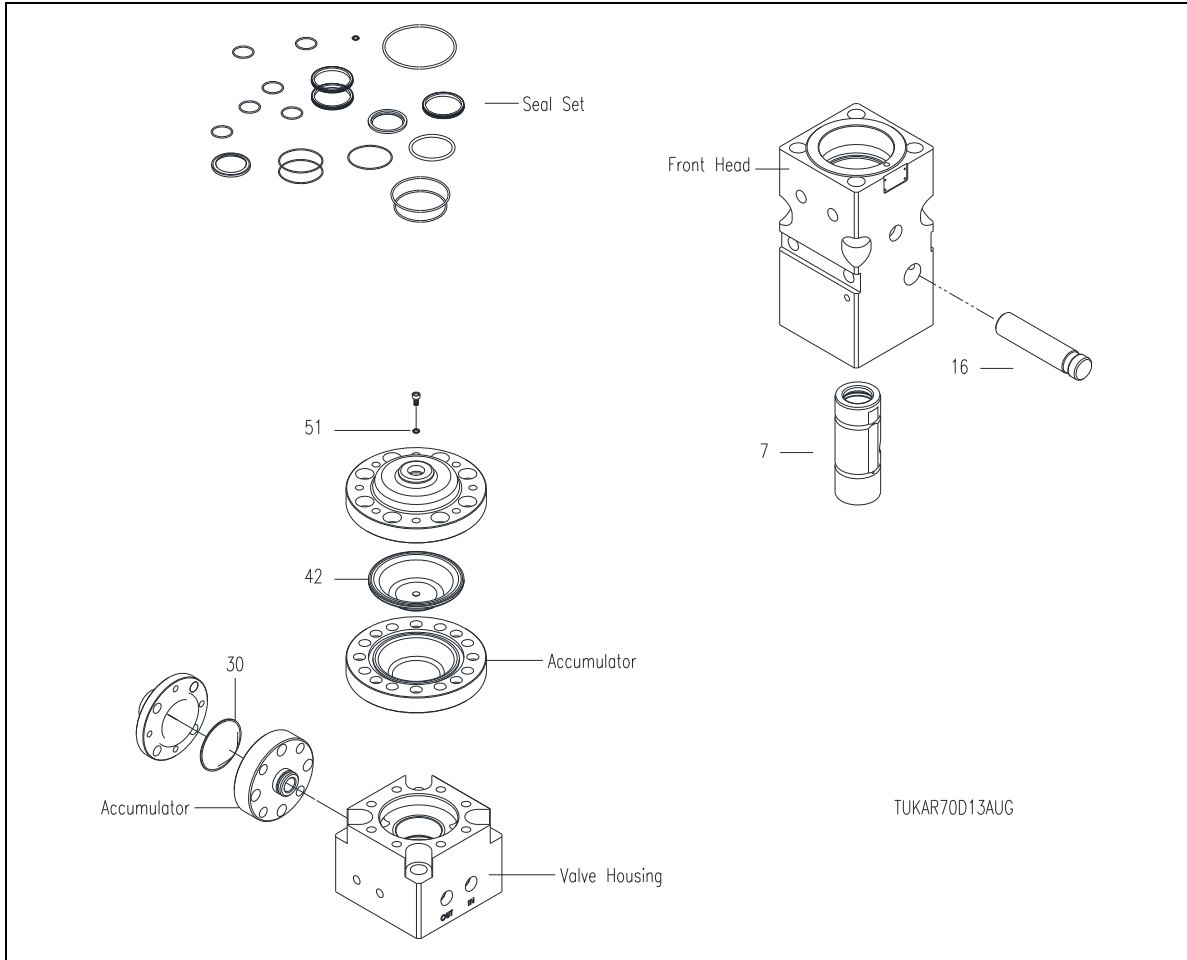
\*Cartridge fits standard hand-type grease gun

## 6.0 Service Kits and Tools

### 6.1 Tune-up Kit

All breakers require regular maintenance and periodic parts replacement. Follow the recommended service schedule to maintain reliable service.

Tune-up kits can help restore performance by replacing common wear parts. Tune-up kits offer the convenience of combining parts that usually need to be replaced at the same time into a single packaged kit.



**Fig. 6-1 Tune-up Kit**

**Table 6.1 Tune-up Kit**

Item	Description	Part No.	Qty	Remarks / Specifications
---	<b>Tune-up Kit</b>	<b>576732</b>	<b>1-Kit</b>	<b>Kit Includes Seal Kit &amp; Items 34,65,103</b>
---	Seal Set	576731	1	
7	Lower Tool Bushing	B0506070	1	
16	Tool Pin	B0506200	2	
30	Accum Membrane	B0506380	1	
42	Accum Membrane	676162	1	

6.0 Service Kits and Tools – [cont'd]

Seal Set – 576731

SSAR70D13nov

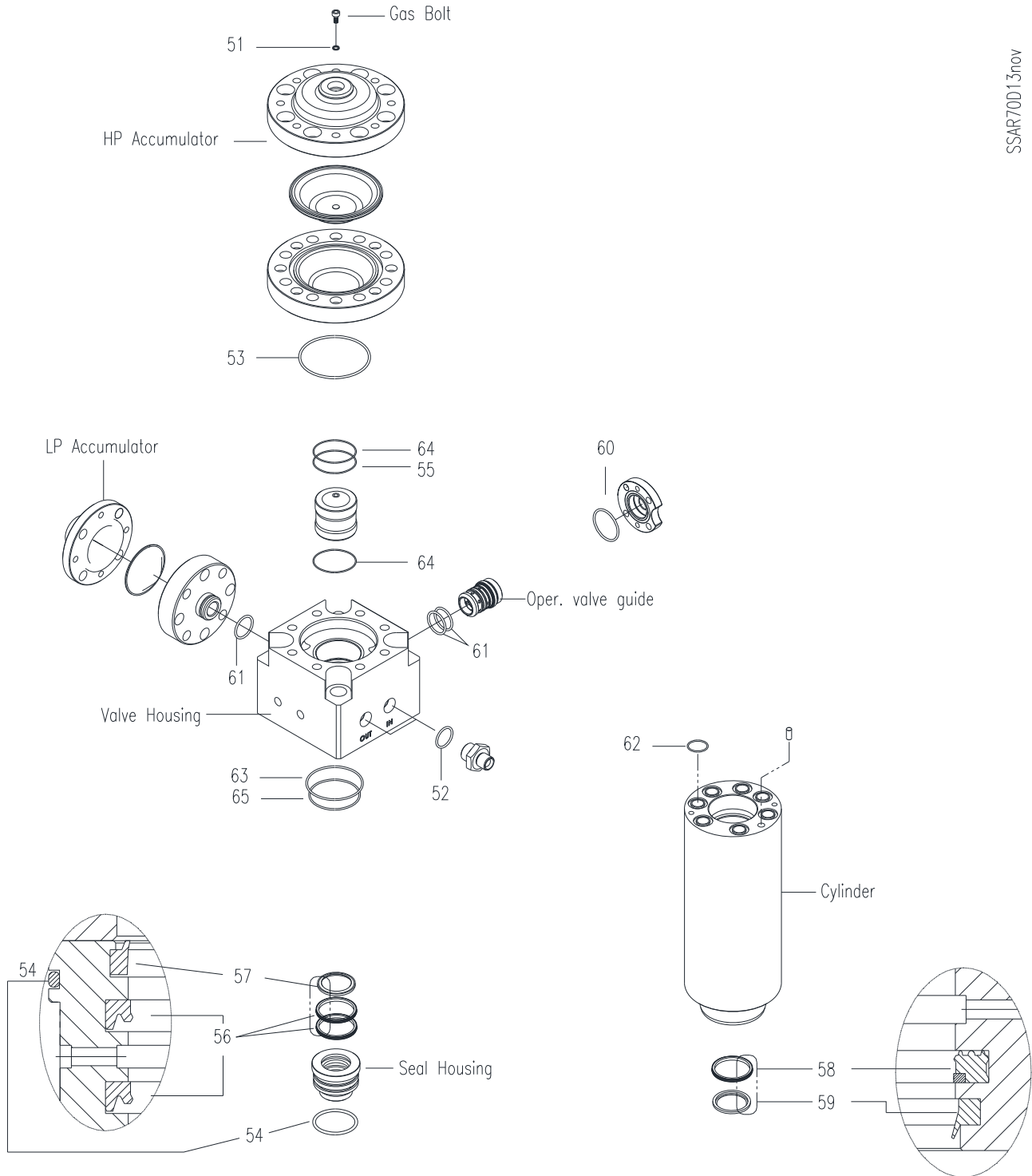


Fig 6-2 Seal Positions - AR70D



Follow Assembly Instructions

**6.0 Service Kits and Tools – [cont'd]****Table 6.2 Seal Set**

Pos	Description	Part No.	Qty	Remarks / Specifications
---	<b>Seal Set</b>	<b>576731</b>	<b>1-Set</b>	<b>Set Includes All Items Listed In Table 6.2</b>
51	Usit Ring	676201	1	
52	O-Ring	676204	2	
53	O-Ring	A1007010	1	
54	O-Ring	676248	1	
55	Back Up Ring	B0507020	1	
56	U-Packing	B0507030	2	
57	Wiper	B0507040	1	
58	U-Packing	B0507050	1	
59	Wiper	B0507060	1	
60	O-Ring	676251	1	
61	O-Ring	676206	3	
62	O-Ring	B0507080	7	
63	Back Up Ring	B0507070	1	
64	O-Ring	A2507310	2	
65	O-Ring	676203	1	
---	Thread Lube 2 oz.	676927	1	Follow application instructions

**IMPORTANT**

Contamination interferes with reliable operation and will shorten component life. Always work in a clean area. Keep seals properly stored in their original sealed package until ready for use.

**IMPORTANT**

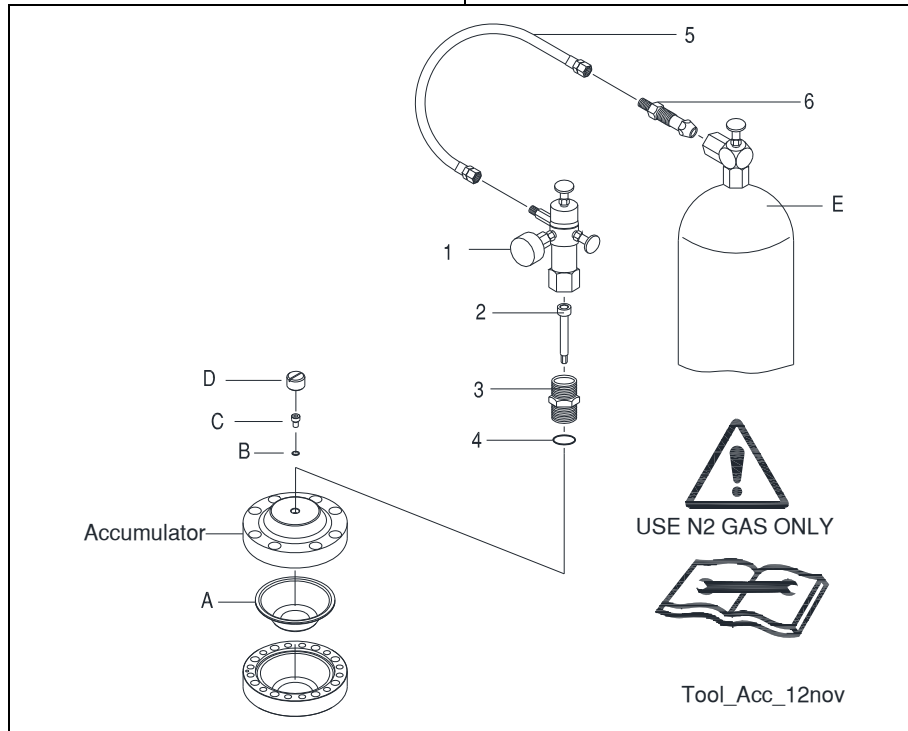
Apply the thread lube provided with seal set to threads of side rods at assembly. *DO NOT apply to seals!*

**6.0 Service Kits and Tools – [cont'd]**

**6.3 Accumulator N2 Gas Charge Equipment**

The accumulator is a self-contained pressure vessel with an elastic membrane dividing the inner chamber. The lower chamber is used to receive, store and discharge pressurized oil. Pressurized gas occupies the upper chamber.



Proper function of the accumulator and optimum service life of the membrane requires accurate charging of the upper chamber. Filling is accomplished with the use of the charging tool (Fig. 6-3) and a commercially available nitrogen bottle. Components of the N2 charge kit are identified in Table 6.3.



**Fig. 6-3 Accumulator N2 Gas Charge Tool**

**Table 6.3 N2 Gas Charge Kit**

Item	Description	Part No.	Qty	Remarks / Specifications
---	<b>N2 Gas Charge Kit</b>	<b>570071</b>	<b>1-Kit</b>	<b>Kit includes 1,2,3,4,5,6</b>
1	Charge Valve with Gauge	100527	1	Includes 2-6 (& storage case - not shown)
2	Socket Bolt	40601	1	
3	Adaptor	R101635	1	
4	O-ring	901135	1	
5	Hose	N/A	1	8 Ft. [2.5 M] Not Available Separately
6	Adapter for N2 Gas Bottle	N/A	1	Not Available Separately
E	Nitrogen Gas Bottle	N/A	---	Not Available from Allied (Source Locally)
A,B,C, D,E	Membrane, U-sit ring, Bolt, Cap, N2 Gas Bottle	---	---	A,B,C,D,E Shown only for reference and are not included in charge kit.



 For safe and proper use of this tool, read, understand and follow all instructions given in the Safety, Operation & Maintenance 576778.

## 7.0 Mounting to the Carrier

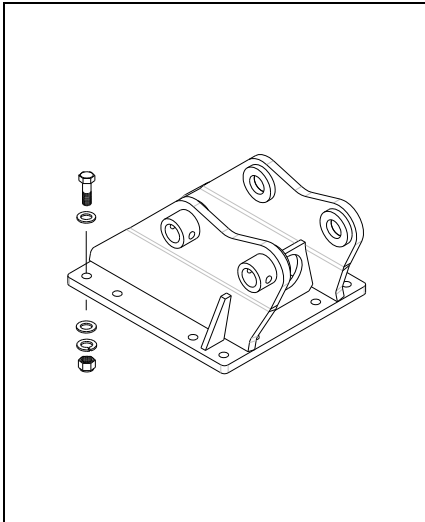
### 7.1 Mounting Brackets

Figure 7-1 shows a typical mounting bracket design. The mounting bracket (sold separately) is bolted to a connection plate located at the top of the housing plates (Fig 7-2). Allied offers an array of mounting brackets to fit virtually any carrier, including those equipped with quick mounting couplers.

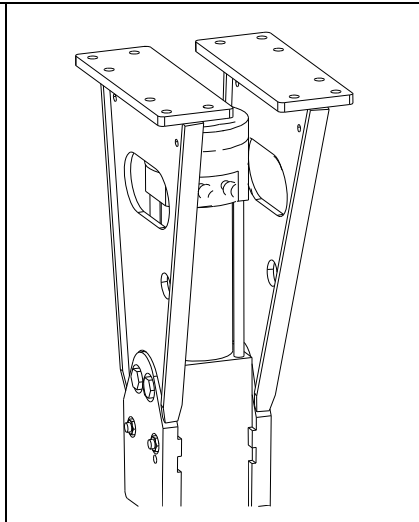
When ordering mounting brackets, complete information about the breaker and carrier is required.

This includes the make, model, series and serial number. Additional information is required if the carrier is equipped with a quick coupler.

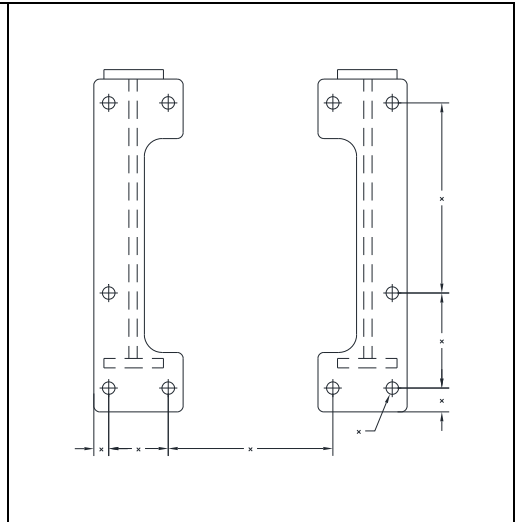
Mounting brackets will vary in design and size. The thickness of the plate, as well as other dimensions, including the quantity, diameter and spacing of the bolt holes will vary between breaker models (Fig. 7-3).



**Fig. 7-1 Mounting Bracket Pin-on Type - Typical**



**Fig 7-2 Housing Plates**



**Fig. 7-3 Connection Plate on Housing**

In Table 7.1, AR-series models are grouped by “Family”. AR-series housing plates and boxes all have a connection plate that is welded to the top. The “Family” refers to a specific bolt hole pattern. Other Allied work tools, including the Ho-Pac® utilize these same mounting Families. Dimensions for these connection plates can be found in the Safety, Operation and Maintenance Manual.

**Table 7.1 AR-Series Mounting Family & Hardware**

Family	Breaker Model	Bolt	FL Washer	LK Washer	Nut
BR	AR70D, A75B	90566 (12)	--- (0)	90597 (24)	91000 (12)
SR	AR85B, AR95B	572352 (10)	679422 (20)	571027 (10)	572353 (10)
MR	AR110C, AR120B	101765 (14)	901291 (28)	658529 (14)	90507 (14)
LR8	AR130B, AR140B	101765 (14)	901291 (28)	658529 (14)	90507 (14)
LR9	AR165, AR175	573167 (14)	573029 (28)	573028 (14)	90519 (14)
LR10	AR180D	576464 (14)	573029 (28)	573028 (14)	90519 (14)
AR205	AR205				



Tightening torque for these fasteners can be found in the Safety, Operation and Maintenance Manual 576778.

## 8.0 How To Order Spare Parts

Your local Allied dealer requires the Product Name, Model and Serial Number to better assist you with questions regarding parts, warranty, operation, maintenance, or repair. This information should be noted in Section 2.3 of this manual.

Product AR-Series Breaker  
 Model AR70D  
 Serial No. \_\_\_\_\_

Complete information is required

Line	Description	Part Number	Quantity	Price
1				
2				
3				
4				
5				
6				
7				
8				
9				
10				

Your contact information

Your Name \_\_\_\_\_ Company Name \_\_\_\_\_  
 Phone \_\_\_\_\_ Account Number \_\_\_\_\_  
 Fax \_\_\_\_\_ Purchase order \_\_\_\_\_  
 Email \_\_\_\_\_ Shipping carrier \_\_\_\_\_

\*See note below

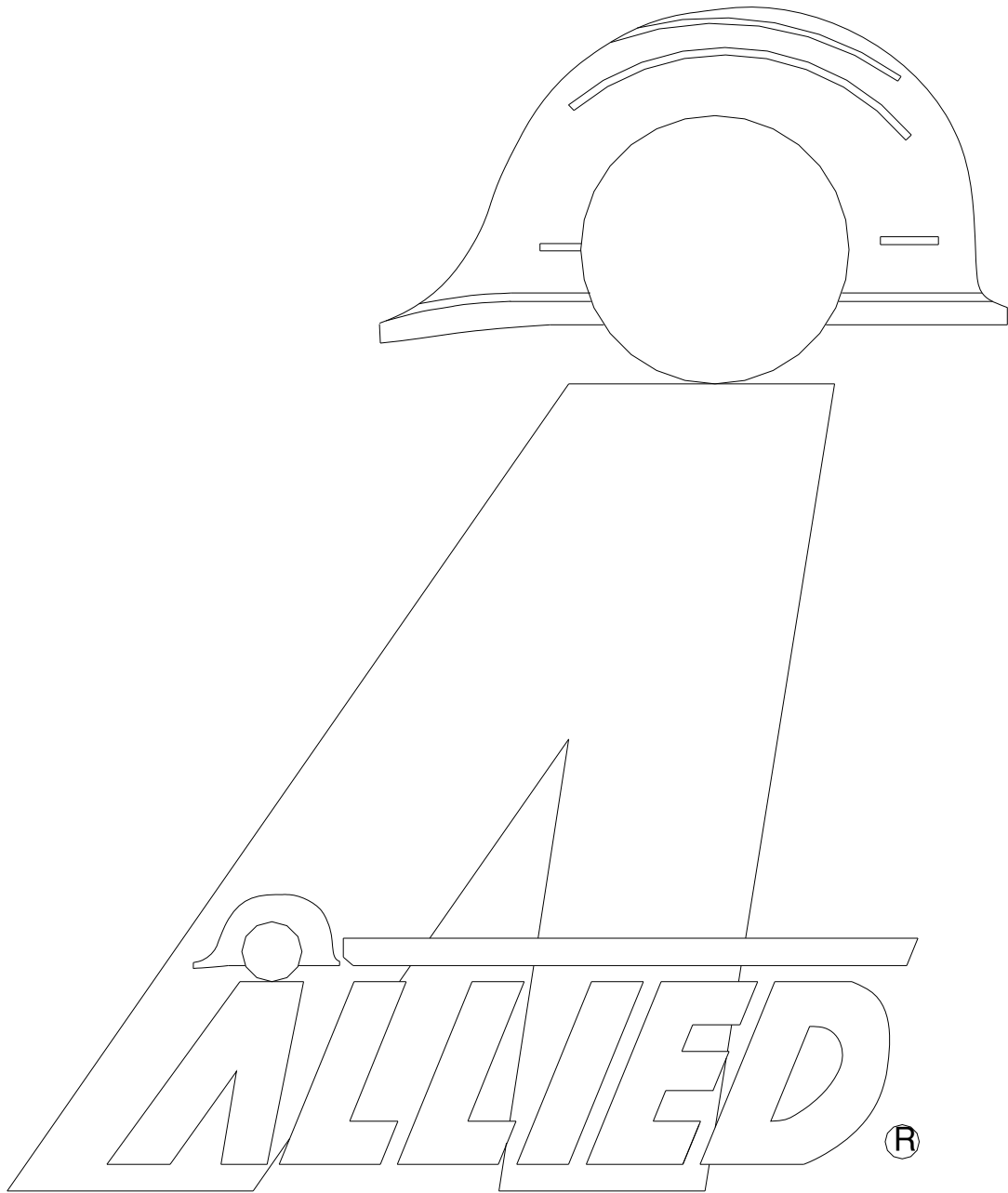
Billing Address \_\_\_\_\_ Shipping Address \_\_\_\_\_  
 \_\_\_\_\_  
 \_\_\_\_\_  
 \_\_\_\_\_

**\*Note: All backordered parts will be shipped when available via the same method as the original order unless initialed and checked below:**

Initials \_\_\_\_\_  
 Ship complete order only  
 Ship available parts and contact customer on disposition of backordered parts  
 Other – specify below  
 \_\_\_\_\_  
 \_\_\_\_\_  
 \_\_\_\_\_







3900 Kelley Avenue, Cleveland, Ohio 44114  
Tel: 216-431-2600 Fax: 216-431-2601  
e-mail: Sales@AlliedCP.com  
website: <http://www.AlliedCP.com>