



(XSF Housing Pictured)

Hydraulic Impact Breaker

**Model
AR70
AR70B
&
AR70C**



Parts Manual AR-SERIES

Keep this manual in a convenient location so that it is easily accessible for future reference. Contact your Allied Dealer or the Allied Customer Service Department for replacement manuals. Inquiries regarding the content of this manual must include the effective date shown on inside cover.





Contact Information

E-mail: sales@alliedcp.com

Allied Construction Products, LLC

3900 Kelley Ave

Tel: 216-431-2600

Cleveland, Ohio 44114

Fax: 216-431-2601

Revision History of Document 002062, 103018, 571030

Allied Construction Products, LLC, reserves the right to change, edit, delete or modify the content of this document, including descriptions, illustrations and specifications without prior notification. Specifications are based on published information at the time of publication. Go to www.alliedcp.com for product or document updates

AR70 Revision History – Summary of Changes For PM002062

Date	Page	Change Notice
May 03, 1999	---	1 st Release of Parts Manual 002062
Apr 05, 2000	1,2,3,4,6,7,9,10,11,12,13,18,19,26,27,28,29	Revisions to Specifications, Parts Lists, Art, Add LTS Configuration, Add SSU2 Skid Steer Configuration
Nov 30, 2000	1,11,13,15,17,19	Specifications, Parts Lists – Part Number Changes
Jul 25, 2001	22	Revise Tool Illustrations
Jan 20, 2002	Throughout	Revise Nomenclature
Oct 30, 2002	25,26,27,28,29,30,31	Add CIMA Energy Decal
Jun 30, 2005	9	Add part number 571053

AR70B Revision History For PM103018

Jun 28, 2005	---	1 st Release of Parts Manual 103018
--------------	-----	--

AR70C Revision History For PM571030

Jun 28, 2005	---	1 st Release of Parts Manual 571030
Jul 01, 2005	18	Add P/N 571053
Sep 29, 2005	16	Revise Item 21
Feb 26, 2008	8, 10, 14	Revise hydraulic adapter configuration
Mar 31, 2009	16, 17, 18, 19	Revise Front Head & Tool Retaining Parts (SN-00145 & above)
Oct 19, 2009	---	Combine Parts Manuals 002062 & 103018 with 571030. Inactivate and discontinue circulation of 002062 & 103018.
Jul 31, 2012	30,33	Revise Seal Kit Table 4.14 & Tool Illustrations & Parts Table 5.1, 5.2.

Table of Contents

<u>Section</u>	<u>Page</u>
Document Revisions.....	i
Table of Contents.....	ii
1.0 Introduction and Scope.....	1
1.1 Purpose of This Manual.....	1
1.2 About This Manual.....	1
1.3 How to Order Replacement Manuals	1
1.4 Additional Publications.....	1
2.0 Equipment Identification.....	3
2.1 Location of the Serial Number.....	3
2.2 Equipment Identification Tag.....	3
2.3 Record Equipment Identification for Future Reference.....	3
3.0 Safety and Identification Labels...	4
4.0 Parts Information.....	7
5.0 Tools – Standard & Specialty.....	33
6.0 Tool & Bushing Lubrication.....	35
6.1 Chisel Paste.....	35
7.0 N2 Gas Accumulator Charge Kit...	36
<u>List of Figures</u>	<u>Page</u>
2-1 Equipment Identification Tag.....	3
2-2 Location of Equipment ID Tag.....	3
3-1 thru 3-13 Overview of Safety and Identification Labels.....	4
3-14 Decal Location – BSF.....	6
3-15 Decal Location – BR.....	6
3-16 Decal Location – XSF.....	7
3-17 Decal Location – SSU2.....	7
4-1 AR70-Series BSF Configuration	8
4-2 AR70-Series BR Configuration.....	8
4-3 AR70-Series XSF Configuration.....	8
4-4 AR70-Series SSU2 Configuration....	8

List of Figures **Page**

Fig 4-5 thru 4-7 exclusive to AR70 & AR70B	---
4-5 Parts View BSF Housing Plates.....	9
4-6 Parts View XSF Housing Plates.....	11
4-7 Parts View SSU2 Housing Plates.....	13

Fig 4-8 thru 4-11 exclusive to AR70C	---
4-8 Parts View with BSF Housing.....	15
4-9 Parts View with BR Housing.....	17
4-10 Parts View with XSF Housing.....	19
4-11 Parts View with SSU2 Housing.....	21

4-12 N2 Gas Charged Accumulator.....	23
4-13 Valve Housing.....	24
4-14 Piston & Cylinder.....	25
4-15 Front Head – AR70.....	26
4-16 Front Head – AR70B & C.....	27
4-17 Tune-up Kit.....	28
4-18 Seal Kit.....	29
4-19 XSF Mounting Kit.....	31
5-1 Standard & Specialty Tools.....	33
7-1 N2 Gas Accumulator Charge Kit.....	36

1.0 Introduction & Scope

1.1 Purpose of This Manual

The Parts Manual identifies each component of the Allied work tool including safety and information labels. Illustrations shown in the Parts Manual are not intended for use in the repair or service of the breaker.

1.2 About This Manual

This manual is an integral part of this product. Keep it in a convenient location so that it is easily accessible for future reference.

Table 1.1 About This Manual

Document ID.	PM571030
Category	Spare Parts
Current Status	See Inside Cover
Product Name:	Hydraulic Mounted Breaker
Series	AR
Applicable Model[s]:	AR70, AR70B, AR70C
Years of Manufacture:	AR70 1999 - 2003 AR70B 2003 – 2005 AR70C 2005 & above

Verify that the content in Table 1.1 corresponds with the information located on the Equipment's Identification Tag. Material presented in this Manual, including part name, part number, figures, descriptions and remarks, may not be suitable for models that are not listed in Table 1.1.

The content of this publication has been reviewed for accuracy. Allied Construction Products, LLC has endeavored to deliver the highest degree of accuracy possible. However, continuous improvement of our products is an Allied policy. The material in this publication, including descriptions, illustrations and specifications, describes the product at the time of its publication, and may not reflect the product in the future. Changes made to the content of this publication are recorded on the inside cover.

1.3 How To Order Replacement Publications

Replacement manuals can be ordered by contacting your Allied dealer service center. These manuals may also be viewed and downloaded at: www.alliedcp.com

1.4 Related Publications

This document is published solely for information purposes and should not be considered all-inclusive. If further information is required, contact your local Allied dealer or the Allied Customer Service Department.

Allied Construction Products, LLC offers the following publications for the product identified in Table 1.1.

Safety, Operation & Maintenance Manual 002065

Applicable Models: AR70 thru AR95B

The Safety, Operation and Maintenance Manual has been prepared to assist the operator and maintenance personnel with the information necessary for the safe and proper use of the Allied work tool.

Content in the Safety, Operation & Maintenance Manual includes:

Safety Information
Equipment Serial Number and Model Identification
Technical Data (Weight & dimensions)
Basic Guidelines for Installation and Set-up
Pre-Operation Inspection
How to Operate the Allied work tool
Maintenance Schedule
N2 Gas Charging Instructions
Tool and Guide Bushing – Lubrication, Inspection, Wear Limits and Replacement
Troubleshooting
Removal From Carrier, Transporting, Lifting & Storage

Repair Manual 101230

The Repair Manual has been prepared to assist the Service Technician with the information necessary for the disassembly & reassembly of the Breaker. Content includes:

Safety Information
Disassembly & Reassembly
Bolt Torque Specifications
Wear Limits of Parts
N2 Gas Charging Instructions
Bushing Replacement

1.0 Introduction and Scope – [cont'd]

1.4 Related Publications – cont'd

AEM Safety Manual

The Association of Equipment Manufacturers publishes a series of safe operation manuals, including Hydraulic Mounted Breakers. These are available by contacting:

Association of Equipment Manufacturers

Toll free 1-866-AEM-0442

E-mail: aem@aem.org

Website: www.aem.org

Ask for FORM MB-140. Or, contact Allied Construction Products, LLC for a copy of 953076

2.0 Equipment Identification

2.1 Location of the Serial Number

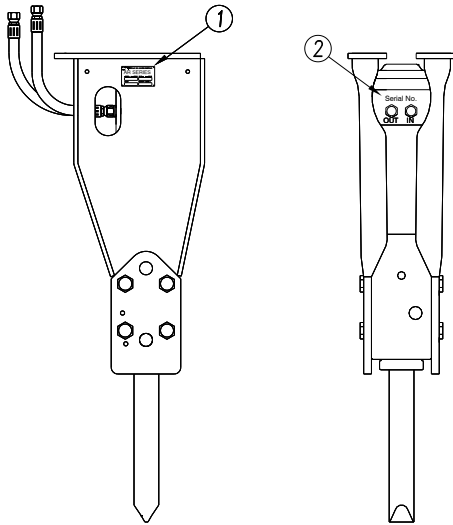


Figure 2-1 Equipment Identification

1) Equipment ID Tag, 2) Secondary location of serial number is

Refer to Figure 2-1. The Serial Number assigned to this equipment can be found in the following locations:

Stamped in the Equipment Identification Tag

Scribed In the Valve Housing Above the (IN) and (OUT) Ports.

2.2 Equipment Identification Tag



Fig 2-2 Equipment Identification Tag

The Equipment Identification Tag is affixed to the side of the housing box. It provides the following information:

- Allied logo and street address
- Product name
- Model number
- Serial number
- Year of manufacture

- Weight

Confirm that the information contained on the Tag corresponds with the information provided in Section 1, Table 1.1.

2.3 Owner's Record of the Equipment

Record the Model and Serial Number from the Equipment Identification Tag to the space provided below. Indicate the date in which the Allied equipment was placed into service.

Model / Part Number: AR70-BSF/ 658668
 Model / Part Number: AR70-XSF/ 658798
 Model / Part Number: AR70-SSU2/ A100300
 Model / Part Number: AR70B-BSF/ A103022
 Model / Part Number: AR70B-XSF/ A103000
 Model / Part Number: AR70B-SSU2/ 103020
 Model / Part Number: AR70C-BSF/ 571010
 Model / Part Number: AR70C-XSF/ 571015
 Model / Part Number: AR70C-SSU2/ 571020
 Model / Part Number: AR70C-BR/ 571035

Serial Number: _____

In service date: _____

Your local Allied dealer requires this information to better assist you with questions regarding parts, warranty, operation, maintenance, or repair.

Register this equipment by returning the completed warranty registration form to Allied.

Product Registration Date _____

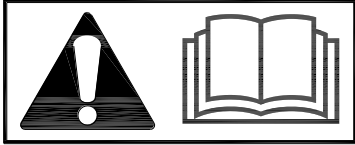
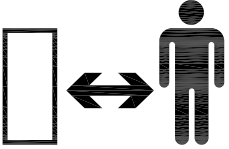

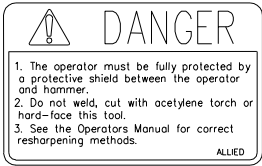


3.0 Safety and Information Labels [cont'd]

3.1 Label Description and Location

Information labels affixed to the Allied equipment include safety warnings, identification and instructions important to operation and service. Table 3.1 identifies and describes each label.


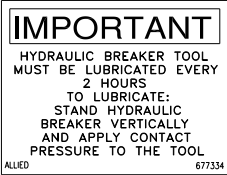
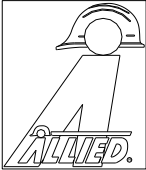

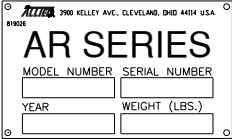
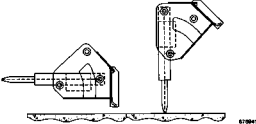
Keep all safety labels clean. Words and illustrations must be readable. Replace damaged or missing labels before operating this equipment. Refer to Table 3.2 for ordering information. Refer to Figure 3-14 for the label's location on the equipment.

Table 3.1 Identification of Safety and Information Labels

Figure	Label	Description
3-1		Read The Manual - Safety Alert Symbol with pictogram of open book. Gives notice for personnel to refer to the manual(s) for information and/or instructions.
3-2		Stay Clear - Pictogram of a person and object separated by an arrow alerts personnel and by-standers to maintain a safe distance from the Allied work tool during operation.
3-3		Flying Debris Hazard – Alerts personnel to the hazard of fragments becoming projectiles. A protective guard to shield the operator must be installed before operation of the breaker. Personnel are directed to the Operator's Manual for safety instructions. NOTE: A smaller sized version of this decal is to be displayed in a conspicuous location inside the operator's cab.
3-4		Personal Protection Equipment / Tool Re-sharpening – Alerts personnel to provide protective shielding between the operator and breaker. It also warns against welding, cutting, or hard-facing the tool. Personnel are directed to the Operator's Manual for approved re-sharpening methods.
3-5		Pressurized Nitrogen Accumulator – Alerts personnel to the accumulator, warning of nitrogen gas under pressure. Directs personnel to the Operation and Maintenance Manual for service instructions.
3-6		Maximum Pressure – The equipment's maximum operating pressure specification.

3.0 Safety and Information Labels [cont'd]

Table 3.1 Identification of Safety and Information Labels – cont'd

Figure	Label	Description
3-7		Lift Point – Pictogram of hook identifies approved lift points.
3-8		Tool Lubrication – Instructions for re-lubrication, including frequency and the required position of the breaker before tool is lubricated.
3-9		ALLIED Logo - Decal is the Allied brand identifier and is a registered trademark of Allied Construction Products, LLC.
3-10	AR70, AR70B, AR70C	Model – Decal identifies the specific model of the Allied equipment.
3-11		Oil Supply Line "PRESSURE" I.D. Tag – A red colored cable tie marked "PRESSURE LINE" is attached to the supply hose for ease of identification between hoses.
3-12		Equipment ID Tag - Contains identifying information about the Allied equipment, including: Manufacturer's name, address, product name, model number, serial number, year of manufacture, and weight.
3-13		2-Position Bracket – This decal shows the breaker's operating positions horizontal and vertical.

3.0 Safety and Information Labels [cont'd]

Table 3.2.1 Safety and Identification Labels

Item	Description	Part No.	Qty	Remarks
	AR70 Label Set Complete	981218		
1-11	AR70B Label Set Complete	103017	1-Set	Set Includes 1 thru 11
	AR70C Label Set Complete	571029		
1	Decal – Tool Sharpening	657838	1	
2	Decal – Danger	657839	2	Install in conspicuous location inside cab
3	Decal – Danger Stay Clear	657841	2	
4	Decal – Max Pressure	658540	1	
5	Decal – Allied “A”	676649	2	
6	Decal – Lube w/ Tool In	677334	1	
7	Decal – Lift Point	676982	1	
	Decal – Model AR 70	658572		
8	Decal – Model AR 70B	103023	1	
	Decal – Model AR 70C	571028		
9	Decal – Accumulator Safety Warning	102756	1	
10	Decal – Read Instructions	676984	1	
11	Pressure ID Tag	818676	1	Located on hydraulic supply hose
12	Equipment ID Tag	819026	1	Not part of decal package

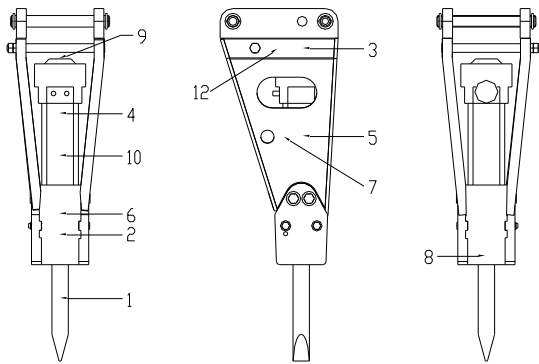


Fig 3-14 BSF Configuration

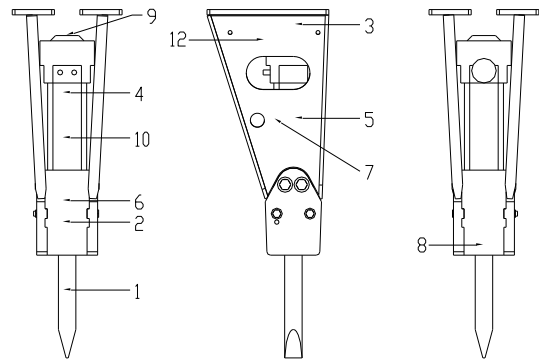


Fig 3-15 BR Configuration

3.0 Safety and Information Labels [cont'd]

Table 3.2.2 Safety and Identification Labels

Item	Description	Part No.	Qty	Remarks
	AR70 Label Set Complete	981218		
1-11	AR70B Label Set Complete	103017	1-Set	Set Includes 1 thru 11
	AR70C Label Set Complete	571029		
1	Decal – Tool Sharpening	657838	1	
2	Decal – Danger	657839	2	Install in conspicuous location inside cab
3	Decal – Danger Stay Clear	657841	2	
4	Decal – Max Pressure	658540	1	
5	Decal – Allied “A”	676649	2	
6	Decal – Lube w/ Tool In	677334	1	
7	Decal – Lift Point	676982	1	
	Decal – AR70	658572		
8	Decal – AR70B	103023	1	
	Decal – AR70C	571028		
9	Decal – Accumulator Safety Warning	102756	1	
10	Decal – Read Instructions	676984	1	
11	Pressure ID Tag	818676	1	Located on hydraulic supply hose
12	Equipment ID Tag	819026	1	Not part of decal package
13	Decal – 2-Position Bracket Orientation	676941	1	Used only on SSU2 unit. Not part of decal package

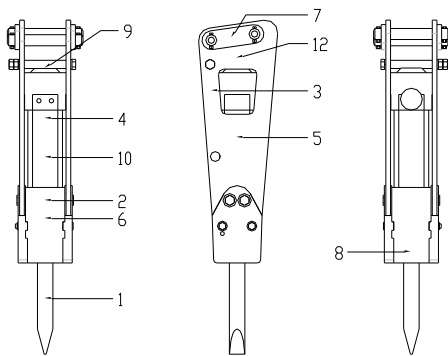


Fig 3-16 XSF Configuration

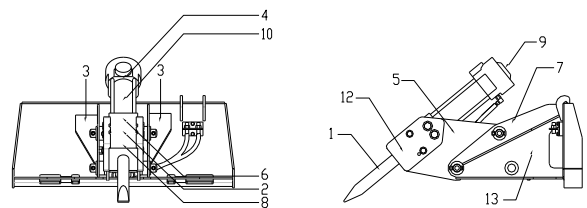


Fig 3-17 SSU2 Configuration

4.0 Parts Information

IMPORTANT PLEASE READ. This Parts Manual covers all configurations of the AR70-Series breaker. Differences with components exist between the AR70, AR70B and AR70C. Prior to ordering parts, it's important to confirm your model and serial number. Carefully read the caption included with each figure and table. The AR70-Series is equipped with Housing Plates available in a variety of mounting options to meet specific carrier requirements. Housing Plate options for the AR70-Series are identified in Figures 4-1 through Figure 4-4.

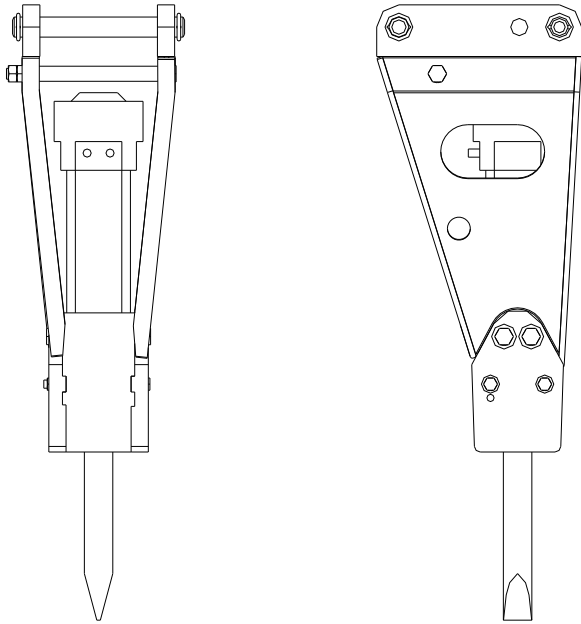


Fig. 4-1: - BSF Housing Plates

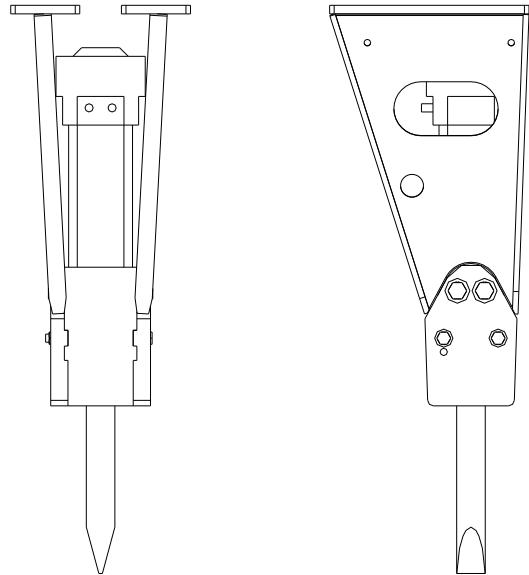


Fig. 4-2: - BR Housing Plates

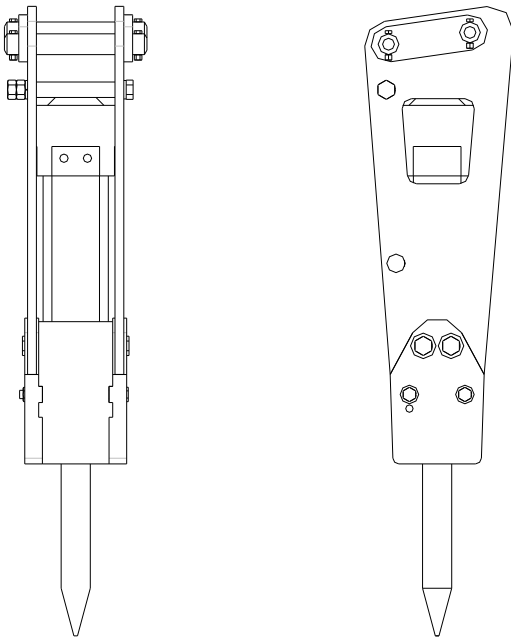


Fig. 4-3: - XSF Housing Plates

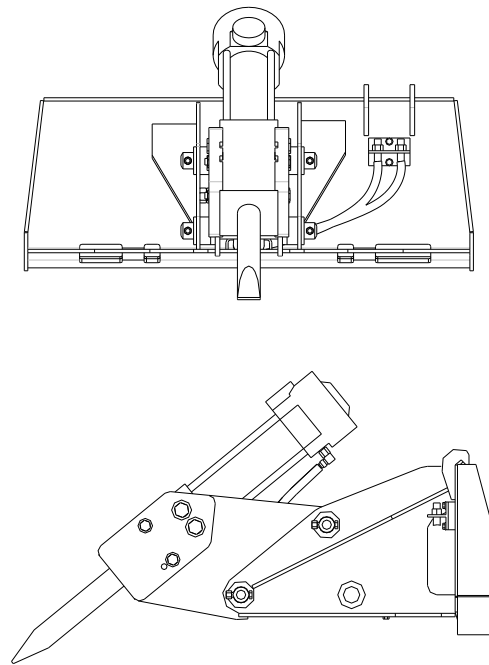


Fig. 4-4: - SSU2 Housing Plates

4.0 Parts Information – [cont'd]

Figure 4-5 shows the AR70 & AR70B equipped with the BSF housing plate option. The BSF housing plate is a pin-on type mounting and is intended for backhoe and excavator machines.

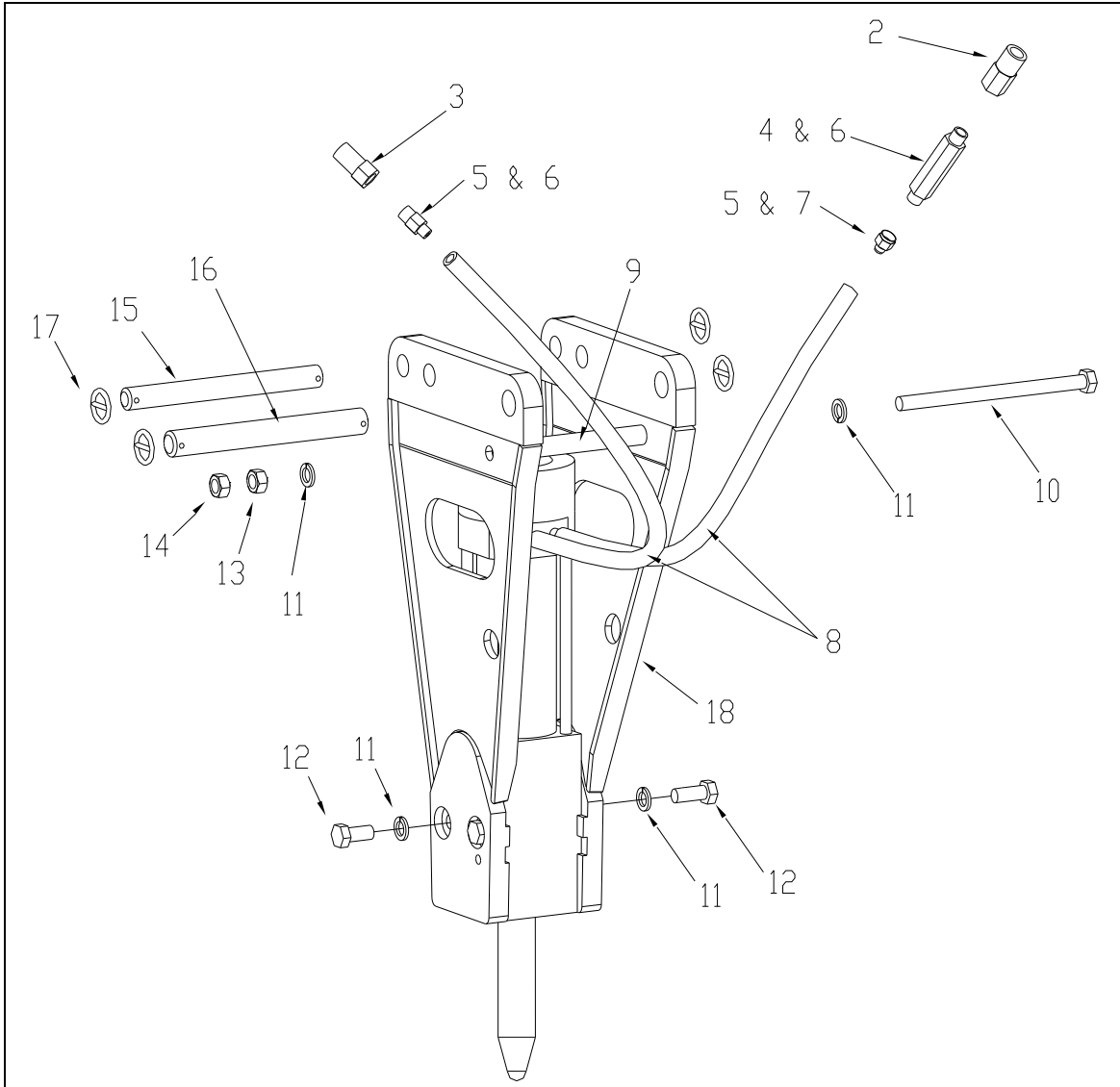


Fig. 4-5 Model AR70 & AR70B Configuration Type BSF

Hydraulic Components & Housing Plates

*****See separate figure and parts list for Model AR70C*****

4.0 Parts Information – [cont'd]**Table 4.1.1 AR70, AR70B Hydraulic Components**

See separate Parts List for AR70C

Item	Description	Part No.	Qty	Remarks
---	AR70-BSF Configuration	658668	---	
---	AR70B-BSF Configuration	A103022	---	
1	Quick Disconnect Coupling	670006	1-Set	Set Includes Items 2 & 3
2	Q.D. Socket	670007	1	
3	Q.D. Plug	670008	1	
4	Check Valve	670270	1	Use is discontinued
5.1	Adapter with Measuring Port	667247	1	Use is discontinued
5.2	Adapter	653349	1	
6	Hex Plug	667566	2	Use is discontinued
7.1	Adapter	903725	1	Use is discontinued
7.2	Adapter	653349	1	
8	Hose	815267	2	
---	Pressure ID Tag	818676	1	Located on supply hose

Table 4.1.2 AR70, AR70B Housing Plates Type BSF

See separate Parts List for AR70C

Item	Description	Part No.	Qty	Remarks
---	AR70-BSF Configuration	658668	---	BSF Configuration
---	AR70B-BSF Configuration	A103022	---	BSF Configuration
9	Spacer	658532	1	
10	Hex Bolt	658527	1	Long
11	Lock Washer	658529	6	
12	Hex Bolt	658525	4	M24
13	Hex Nut	667220	1	
14	Acorn Nut	658530	1	
15	Pin	617080	1	1.50 in Ø
16	Pin	653378	1	1.75 in Ø
17	Klik Pin	617104	4	
18	Housing Plates – Type BSF	658667	1-Set	Set includes LH & RH Plates

4.0 Parts Information – [cont'd]

Figure 4-6 shows the AR70 & AR70B equipped with the XSF housing plate option. The XSF housing plate, with pin-on type mounting, is intended for mini-excavator machines.

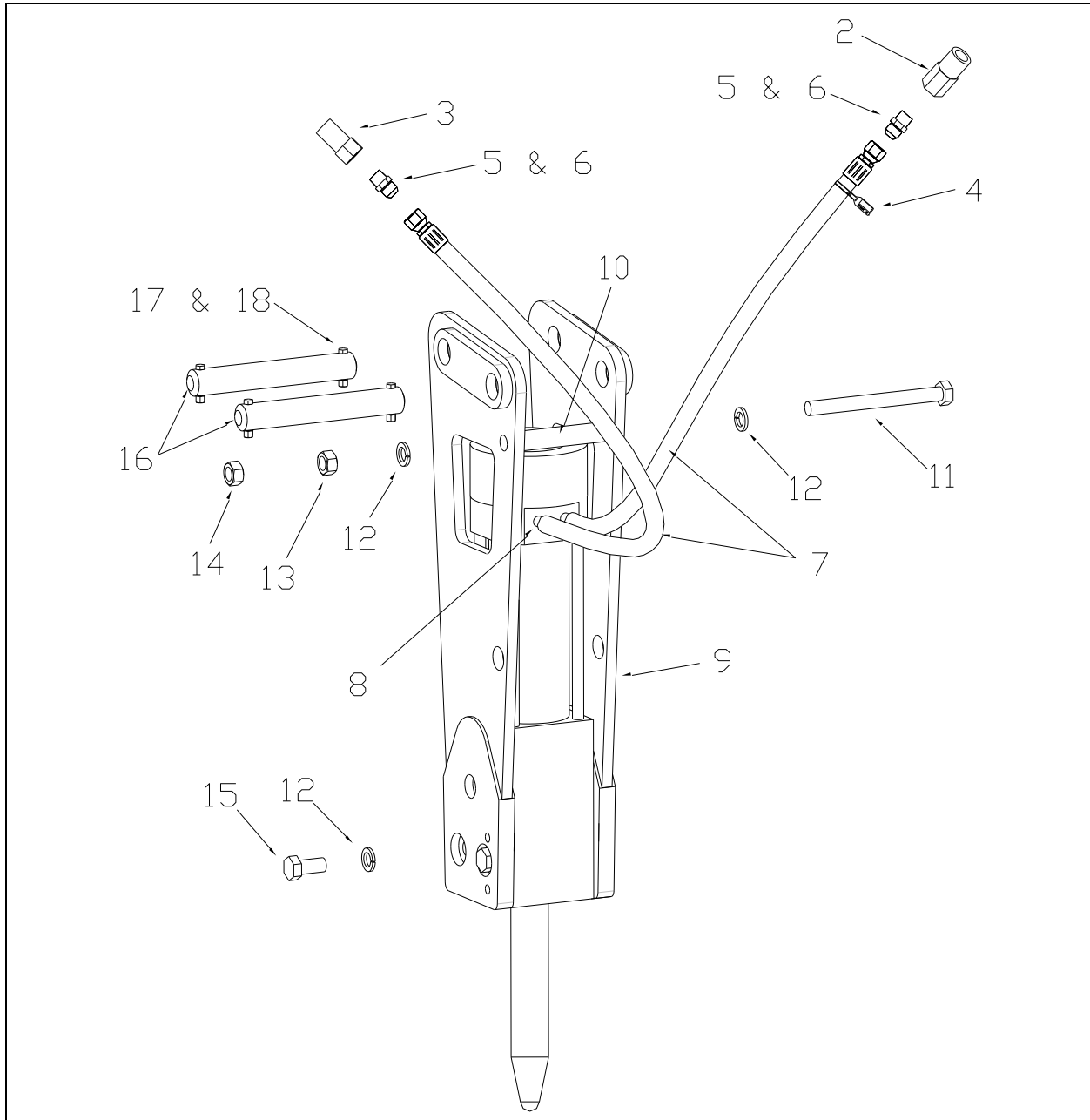


Figure 4-6 Model AR70 & AR70B XSF Configuration
Hydraulic Components & Housing Plates Type XSF
*****See separate figure and parts list for AR70C*****

4.0 Parts Information – [cont'd]**Table 4.2.1 Hydraulic Components**

See separate Parts List for AR70C

Item	Description	Part No.	Qty	Remarks
---	AR70-XSF Configuration	658798	---	XSF Configuration
---	AR70B-XSF Configuration	A103000	---	XSF Configuration
1	Quick Disconnect Coupler	670006	1-Set	Set Includes Items 2 & 3
2	Q.D. Socket	670007	1	
3	Q.D. Plug	670008	1	
4	Pressure ID Tag	818676	1	Located on supply hose
5.1	Adapter with Measuring Port	667247	2	Use is discontinued
5.2	Adapter	653349	2	
6	Hex Plug	667566	2	Use is discontinued
7	Hose	902492	2	
8	Adapter	676151	1	

Table 4.2.2 Housing Plates Type XSF

See separate Parts List for AR70C

Item	Description	Part No.	Qty	Remarks
---	AR70-XSF Configuration	658798	---	XSF Configuration
---	AR70B-XSF Configuration	A103000	---	XSF Configuration
9	Housing Plates - XSF	658516	1-Set	Set includes LH & RH Plates
10	Spacer	100090	1	
11	Hex Bolt	658526	1	Long
12	Lock Washer	658529	6	
13	Hex Nut	667220	1	
14	Acorn Nut	658530	1	
15	Hex Bolt	658525	4	
16	Mounting Pin	[Varies]	2	Refer to Table 4.15
17	Hex Bolt	653343	4	
18	Hex Nut	759808	4	

4.0 Parts Information – [cont'd]

Figure 4-7 shows the AR70 & AR70B equipped with the SSU2 housing plate option. The SSU2 housing plate allows tilting of the breaker and is intended for skid-steer type machines.

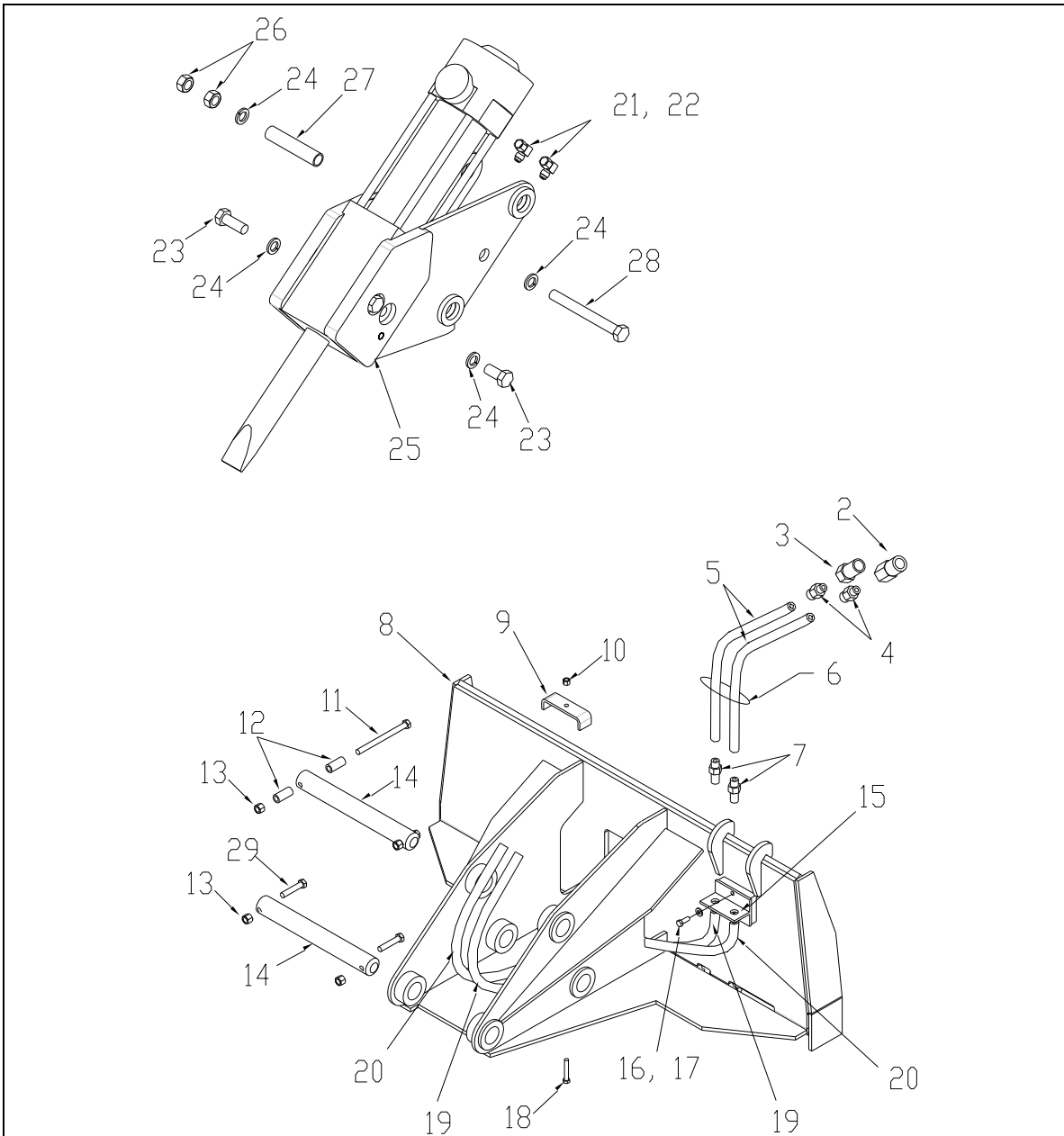


Fig. 4-7 Model AR70 & AR70B

Hydraulic Components & Housing Plates Type - SSU2

*****See separate figure and parts list for AR70C*****

4.0 Parts Information – [cont'd]**Table 4.3 Hydraulic Components & SSU2 Housing Plates**

See separate Parts List for AR70C

Item	Description	Part No.	Qty	Remarks
---	AR70-SSU2 Configuration	A100300	---	SSU2 Configuration
---	AR70B-SSU2 Configuration	103020	---	SSU2 Configuration
1	Quick Disconnect Coupler	670006	1-Set	Set Includes Items 2 & 3
2	Q.D. Socket	670007	1	
3	Q.D. Plug	670008	1	
4	Adapter	653349	2	
5	Hose	865308	2	66"
6	Hose Protector	667472	1	66"
7	Adapter - Bulkhead	815046	2	
8	Mounting Bracket 2-Position SSU2	658660	1	
9	Hose Clamp	100439	1	
10	Elastic Nut	759808	1	
11	Hex Head Bolt	563356	1	½" x 6 ¼" Lg.
12	Nylon Sleeve	676939	2	
13	Elastic Nut	813289	4	
14	Pin	100192	2	
15	Bulkhead Bracket	A100318	1	
16	Hex Head Bolt	903703	2	
17	Flat washer	903713	2	
18	Hex Head Bolt	865467	1	3/8"
19	Hose	814177	1	48"
20	Hose	100440	1	52"
21	Adapter	676151	2	
22	90° Swivel Elbow	814146	2	
23	Hex Head Bolt	658525	4	M24
24	Lock washer	658529	6	
25	Adapter Plates	658557	1-Set	Set includes LH & RH Plates
26	Hex Nut	667220	2	
27	Spacer	658531	1	
28	Hex Head Bolt	100600	1	Long M24
29	Hex Head Bolt	708511	3	½" x 2 ½"
---	Pressure ID Tag	818676	1	Located on supply hose

4.0 Parts Information – [cont'd]

Figure 4-8 shows the AR70C equipped with the BSF housing plate option. The BSF housing plate is a pin-on type and is intended for backhoe and excavator machines.

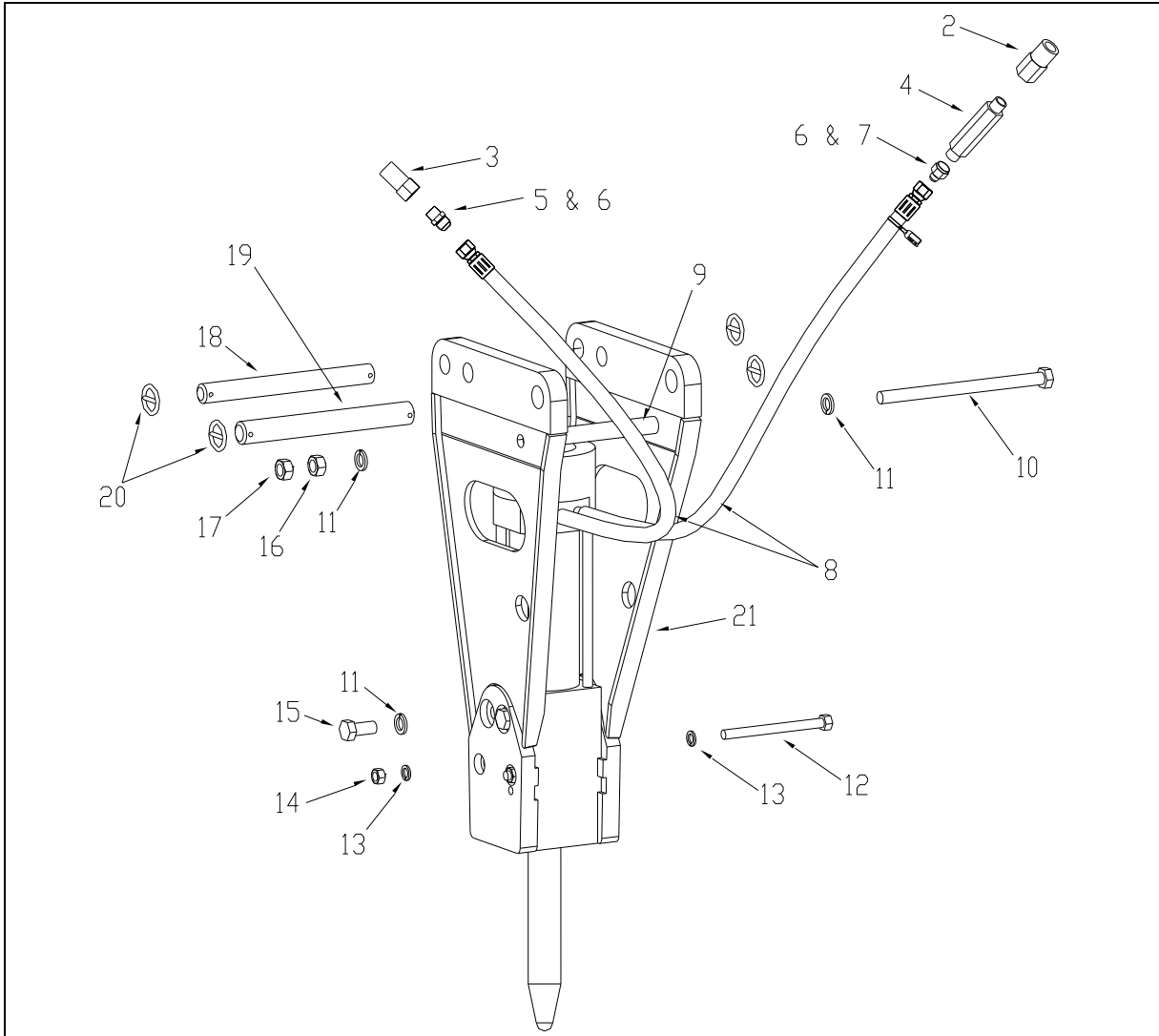


Fig 4-8 Hydraulic Components & BSF Housing Plates – Model AR70C

*****See separate figure and parts list for AR70 & AR70B*****

4.0 Parts Information – [cont'd]**Table 4.4.1 Hydraulic Components**

See separate Parts List for AR70 & AR70B

Item	Description	Part No.	Qty	Remarks
---	AR70C-BSF Configuration	571010	---	BSF Configuration
1	Quick Disconnect Coupler	670006	1-Set	Set Includes Items 2 & 3
2	Q.D. Socket	670007	1	
3	Q.D. Plug	670008	1	
4	Check Valve	670270	1	Use is discontinued
5.1	Adapter w/ port	667247	1	Use is discontinued
5.2	Adapter	653349	1	
6	Hex Plug	667566		Use is discontinued
7.1	Adapter	903725	1	Use is discontinued
7.2		653349	1	
8	Hose Assembly	815267	2	

Table 4.4.2 Hydraulic Components & BSF Housing Plates

See separate Parts List for AR70 & AR70B

Item	Description	Part No.	Qty	Remarks
---	AR70C-BSF Configuration	571010	---	BSF Configuration
9	Spacer	658532	1	
10	Hex Head Bolt	658527	1	Long
11	Lock washer	658529	6	
12	Hex Head Bolt	571026	2	
13	Lock washer	571027	4	
14	Hex Nut	679423	2	
15	Hex Head Bolt	658525	4	M24
16	Hex Nut	667220	1	
17	Acorn Nut	658530	1	
18	Pin	617080	1	1 ½" Ø
19	Pin	653378	1	1 ¾" Ø
20	Klik Pin	617104	4	
21	Housing Plates - BSF	571375	1-Set	Set includes LH & RH Plates
---	Pressure ID Tag	818676	1	Located on supply hose

4.0 Parts Information – [cont'd]

Figure 4-9 shows the AR70C equipped with the BR housing plate option. An upper mounting bracket (sold separately) is bolted to the top of the housing plates. The BR housing plate is intended for backhoe and excavator machines.

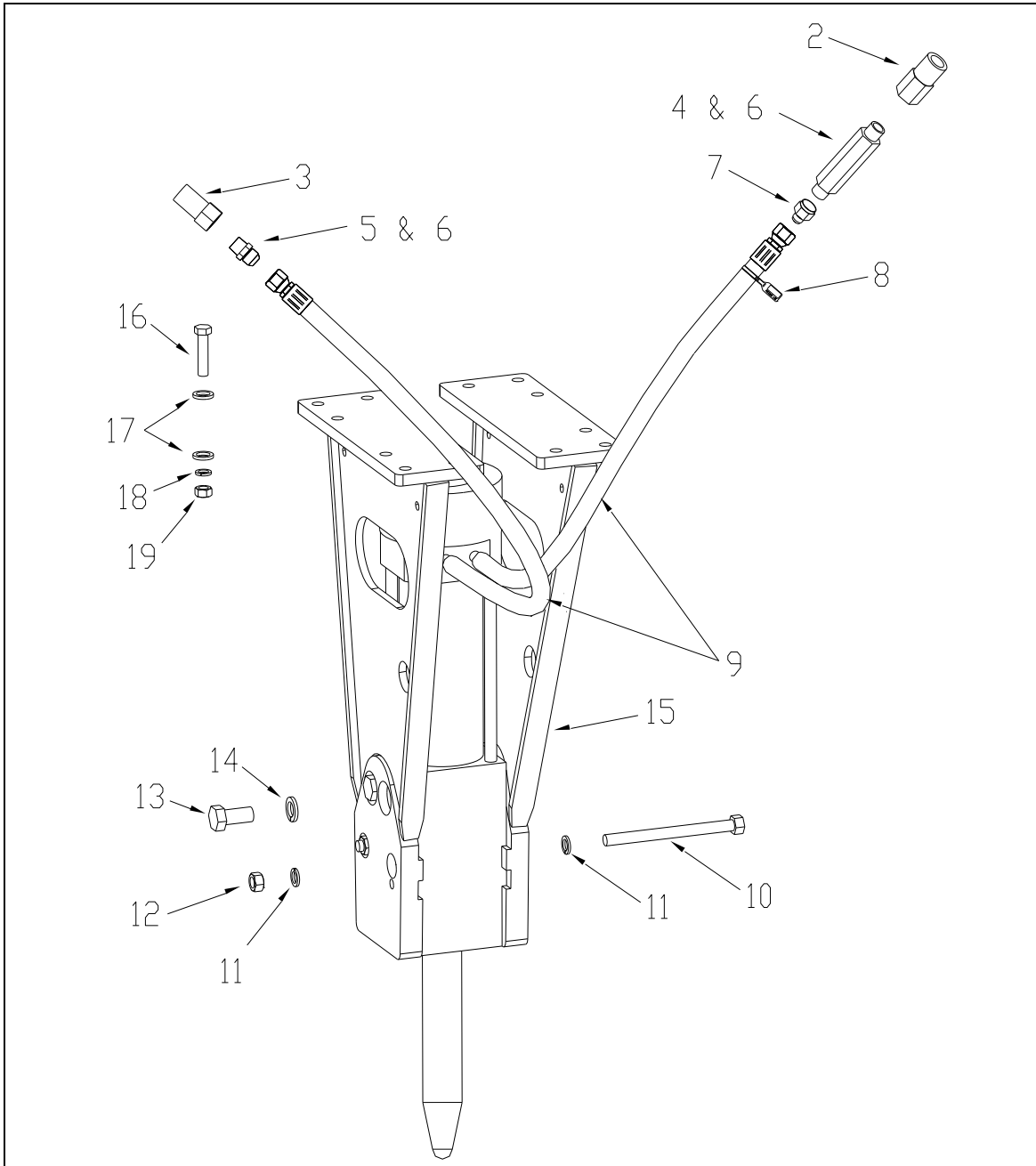


Fig. 4-9 Model AR70C

Hydraulic Components & Housing Plates Type – BR

See separate diagram and parts list for Model AR70 & AR70B

4.0 Parts Information – [cont'd]**Table 4.5.1 Hydraulic Components & Housing Plates Type - BR**

See separate Parts List for AR70 & AR70B

Item	Description	Part No.	Qty	Remarks
---	AR70C-BR Configuration	571035	---	BR Configuration
1	Quick Disconnect Coupler	670006	1-Set	Set Includes Items 2 & 3
2	Q.D. Socket	670007	1	
3	Q.D. Plug	670008	1	
4	Check Valve	670270	1	Use is discontinued
5.1	Adapter w/ measuring port	667247	1	Use is discontinued
5.2	Adapter	653349	1	
6	Hex Plug	667566	2	Use is discontinued
7.1	Adapter	903725	1	Use is discontinued
7.2		653349	1	
8	Pressure ID Tag	818676	1	Located on supply hose
9	Hose Assembly	815267	2	

Table 4.5.2 Housing Plates Type – BR

See separate Parts List for AR70 & AR70B

Item	Description	Part No.	Qty	Remarks
---	AR70C-BR Configuration	571035	---	BR Configuration
10	Hex Head Bolt	571026	2	
11	Lock washer	571027	4	
12	Hex Nut	679423	2	
13	Hex Head Bolt	658525	4	M24
14	Lock washer	658529	4	
15	Housing Plates - BR	571039	1-Set	Set includes LH & RH Plates
16	Bolt Set	658527	1-Set	Set includes 17,18,19
17	Hex Head Bolt	90566	12	
18	Washer	90597	24	
19	Nut	91000	12	

4.0 Parts Information – [cont'd]

Figure 4-6 shows the AR70C equipped with XSF housing plates. The XSF housing plates, with pin-on type mounting, is intended for mini-excavator machines.

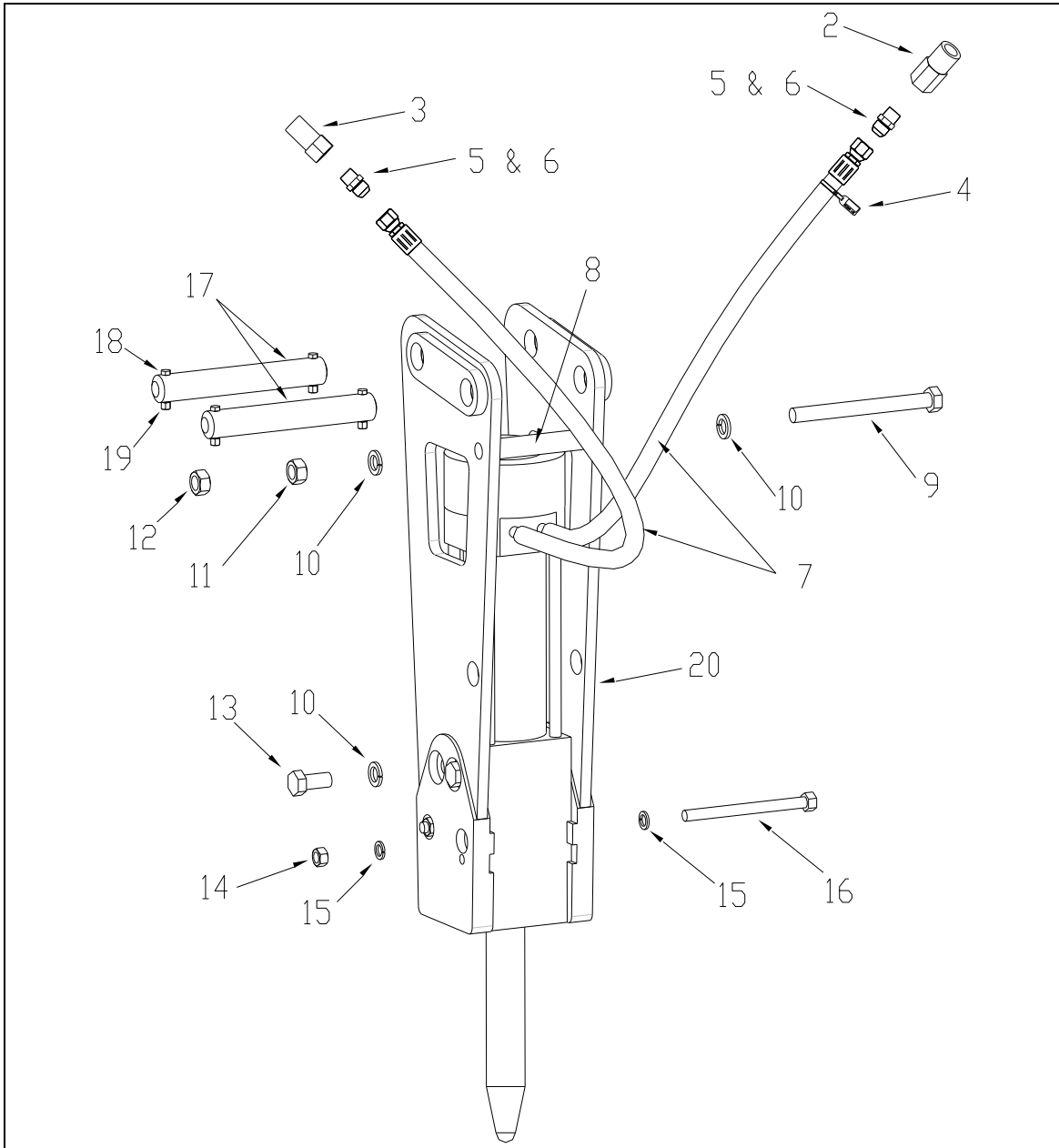


Figure 4-10 Model AR70C

Hydraulic Components & Housing Plates Type XSF

*****See separate figure and parts list for Model AR70 & AR70B*****

4.0 Parts Information – [cont'd]**Table 4.6 Hydraulic Components**

See separate Parts List for AR70 & AR70B

Item	Description	Part No.	Qty	Remarks
---	AR70-XSF Configuration	571015	---	XSF Configuration
1	Quick Disconnect Coupler	670006	1-Set	Set Includes Items 2 & 3
2	Q.D. Socket	670007	1	
3	Q.D. Plug	670008	1	
4	Pressure ID Tag	818676	1	Located on supply hose
5.1	Adapter with Measuring Port	667247	2	Use is discontinued
5.2	Adapter	653349	2	
6	Hex Plug	667566	2	Use is discontinued
7	Hose	902492	2	

Housing Plates Type – XSF & Hardware

See separate Parts List for AR70 & AR70B

Item	Description	Part No.	Qty	Remarks
---	AR70-XSF Configuration	571015	---	XSF Configuration
8	Spacer	100090	1	
9	Hex Head Cap Screw	658526	1	
10	Lock washer	658529	6	
11	Hex Nut	667220	1	
12	Acorn Nut	658530	1	
13	Hex Head Bolt	658525	4	M24
14	Hex Nut	679423	2	
15	Lock washer	571027	4	
16	Hex Head Bolt	571026	2	M18 Long
17	Mounting Kit	[Varies]	1	Refer to Table 4.15 for list
18	Hex Bolt – 3/8"	653343	4	
19	Hex Nut	759808	4	
20	Housing Plates Type - XSF	571022	1-Set	Set includes LH & RH Plates

4.0 Parts Information – [cont'd]

Figure 4-11 shows the AR70C equipped with the SSU2 housing plate option. The SSU2 housing plate allows tilting of the breaker and is intended for skid-steer machines.

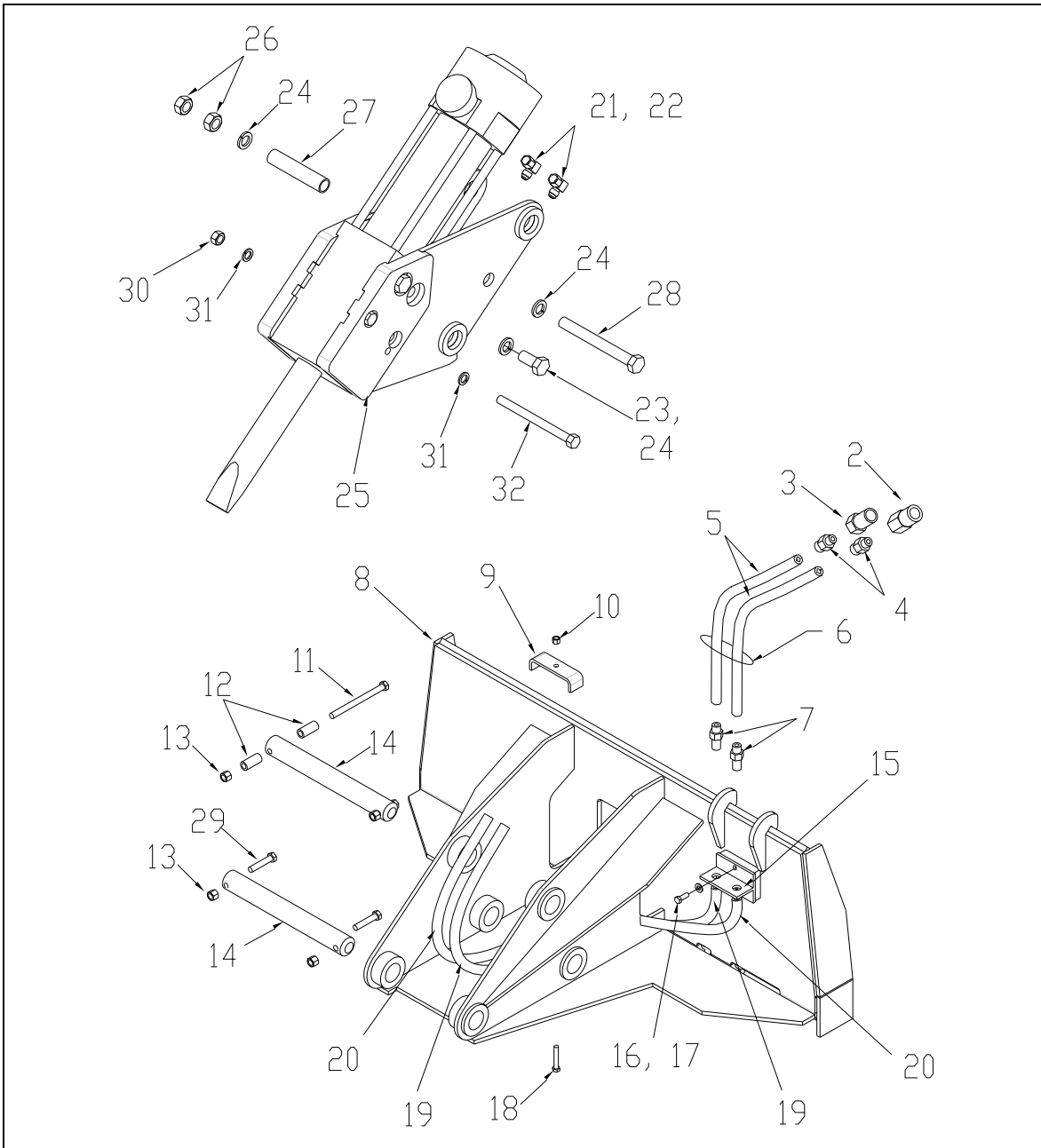


Fig. 4-11 Model AR70C

Hydraulic Components & Housing Plates Type - SSU2

*****See separate figure and parts list for Model AR70 & AR70B*****

4.0 Parts Information – [cont'd]**Table 4.7 Hydraulic Components & SSU2 Housing Plates**

See separate Parts List for AR70 & AR70B

Item	Description	Part No.	Qty	Remarks
---	AR70C-SSU2 Configuration	571020	---	
1	Quick Disconnect Coupler	670006	1-Set	Set Includes Items 2 & 3
2	Q.D. Socket	670007	1	
3	Q.D. Plug	670008	1	
4	Adapter	653349	2	
5	Hose	865308	2	66"
6	Hose Protector	667472	1	66"
7	Adapter - Bulkhead	815046	2	
8	Mounting Bracket 2-Position SSU2	658660	1	
9	Hose Clamp	100439	1	
10	Elastic Nut	759808	1	
11	Hex Head Bolt	563356	1	½" x 6 ¼" Lg.
12	Nylon Sleeve	676939	2	
13	Elastic Nut	813289	4	
14	Pin	100192	2	
15	Bulkhead Bracket	A100318	1	
16	Hex Head Bolt	903703	2	
17	Flat washer	903713	2	
18	Hex Head Bolt	865467	1	3/8"
19	Hose	814177	1	48"
20	Hose	100440	1	52"
21	Adapter	676151	2	
22	90° Swivel Elbow	814146	2	
23	Hex Head Bolt	657433	4	M24
24	Lock washer	658529	6	
25	Adapter Plates	571025	1-Set	1-Set includes LH & RH Plates
26	Hex Nut	667220	2	
27	Spacer	658531	1	
28	Hex Head Bolt	100600	1	
29	Hex Head Bolt	708511	3	½" x 2 ½"
30	Hex Nut	679423	2	
31	Lock washer	571027	4	
32	Hex Head Bolt	571026	2	M18

4.0 Parts Information – [cont'd]

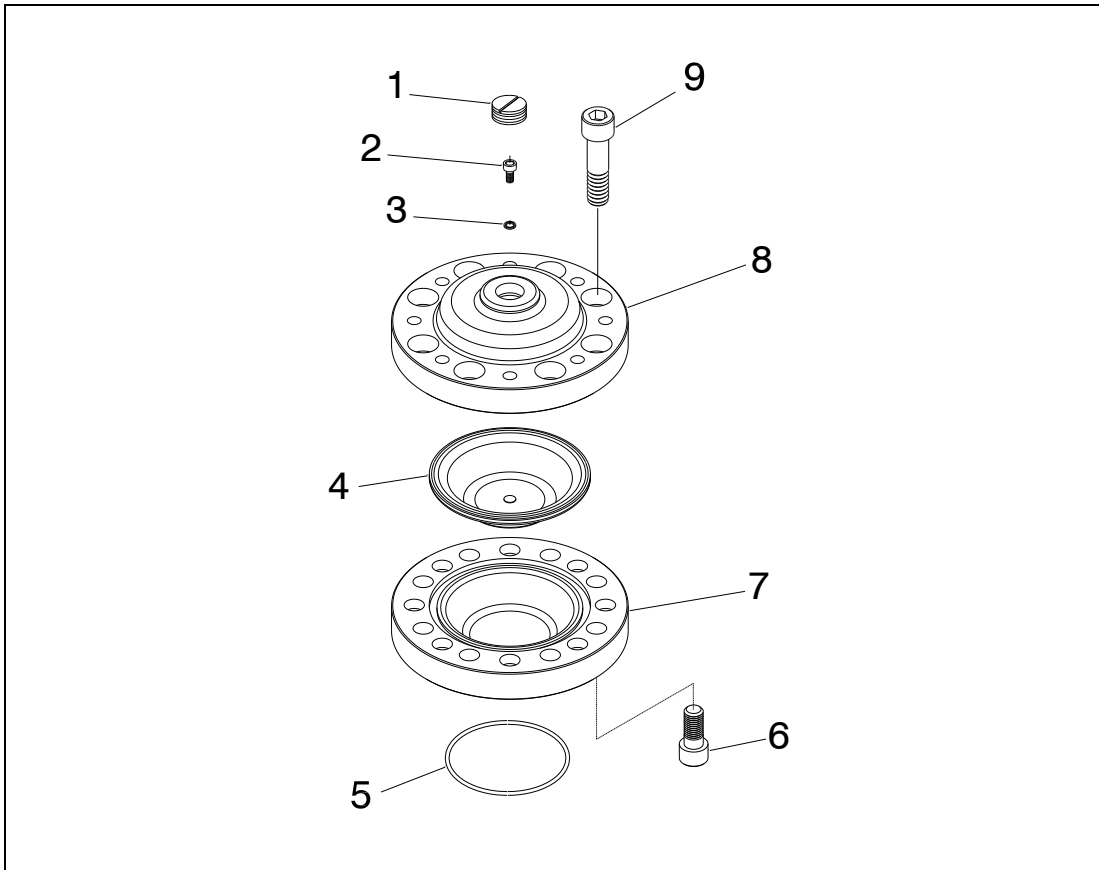


Fig 4-12 Accumulator AR70-Series

Table 4.8 Accumulator ¹⁾

Item	Description	Part No.	Qty	Remarks
1	Protective Cap	676157	1	
2	Threaded Plug	676161	1	
3	Seal	676201	1	
4	Membrane	676162	1	
5	O-Ring	676202	1	
6	Socket Head Bolt	676164	8	
7	Accumulator Shell, Lower	676156	1	
8	Accumulator Shell, Upper	676155	1	
9	Socket Head Bolt	676163	8	

¹⁾ Parts shown in Table 4.8 are for use in AR70, AR70B & AR70C

4.0 Parts Information – [cont'd]

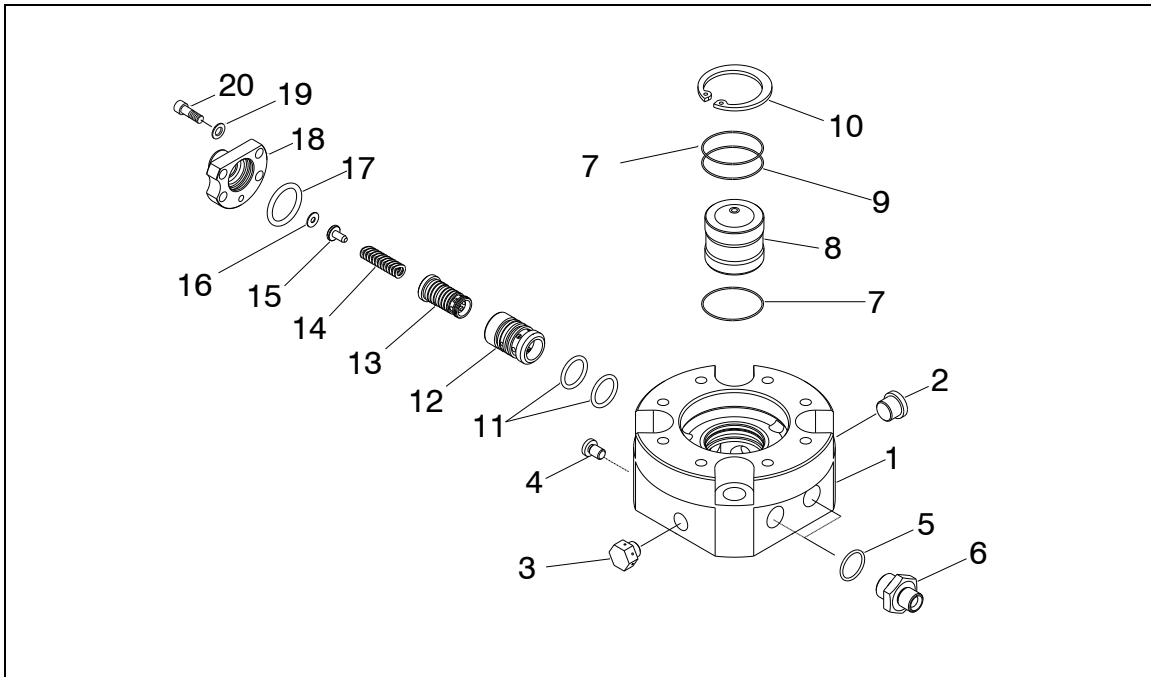


Fig 4-13 Valve Housing AR70-Series

Table 4.9 Valve Housing¹⁾

Item	Description	Part No.	Qty	Remarks
1	Valve Housing	676154	1	
2	Threaded Plug	676158	1	
3	Vent Plug	676215	1	
4	Threaded Plug	676159	1	
5	O-Ring	676204	2	
6	Adapter	676151	2	
7	O-Ring	676203	2	
8	Bushing	676166	1	
9	Back-Up Ring	676205	1	
10	Snap Ring	676165	1	
11	O-Ring	676204	2	
12	Regulator Guide	676199	1	
13	Regulator Spool	676172	1	
14	Regulator Spring	676171	1	
15	Regulator Spring Guide	676173	1	
16	Regulator Shim Plate	676174	1	
17	O-Ring	676206	1	
18	Regulator Cover	676175	1	
19	Disc Lock Washer	571053	4	
20	Socket Head Bolt	940587	4	

¹⁾ Parts shown in Table 4.9 are for use in AR70, AR70B & AR70C

4.0 Parts Information – [cont'd]

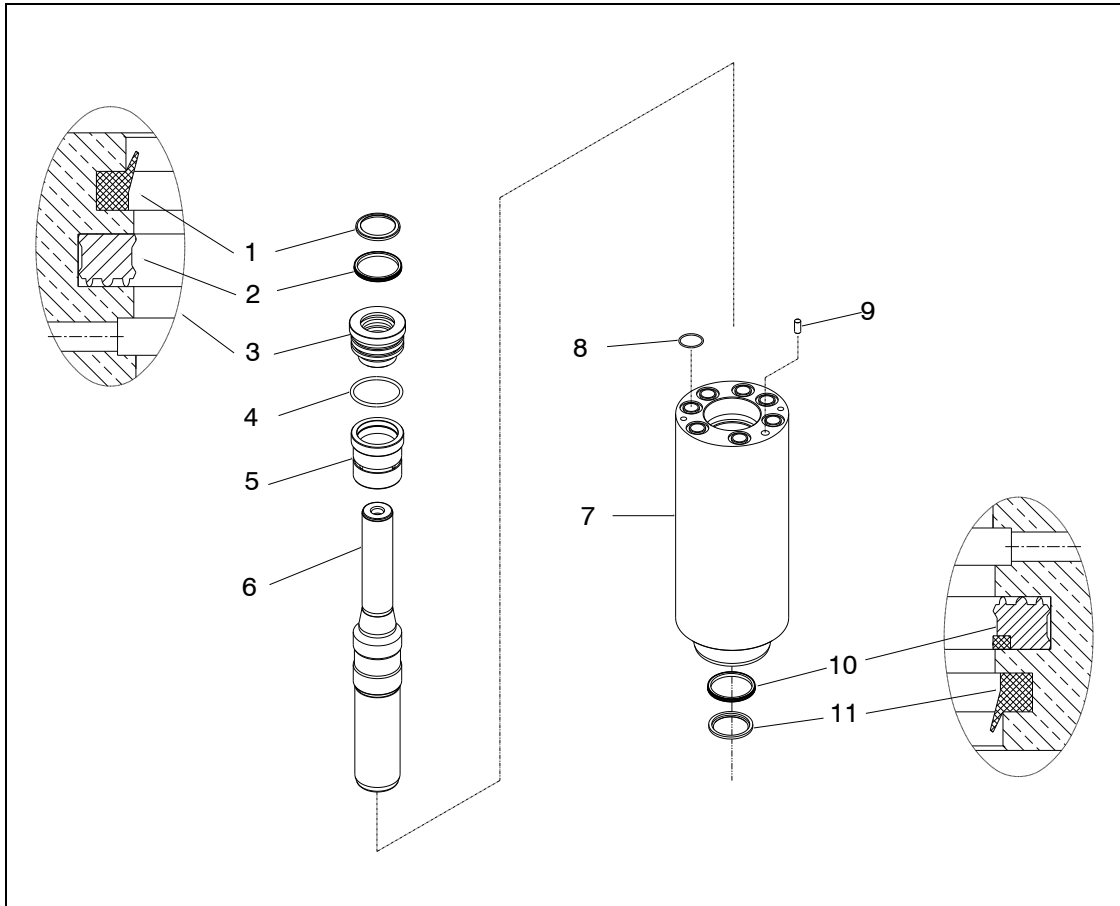


Figure 4-14 Piston and Cylinder AR70-Series

Table 4.10 Piston & Cylinder¹⁾

Item	Description	Part No.	Qty	Remarks
1	Upper Wiper, Piston	676208	1	
2	Piston Seal, Upper	676207	1	
3	Seal Housing	676179	1	
4	O-Ring	676203	1	
5	Control Valve	676181	1	
6	Piston	676178	1	
7	Cylinder Body	676182	1	
8	O-Ring	676209	7	
9	Alignment Pin	676183	1	
10	Piston Seal, Lower	676210	1	
11	Lower Wiper, Piston	676211	1	

¹⁾ Parts shown in Table 4.10 are for use in AR70, AR70B & AR70C

4.0 Parts Information – [cont'd]

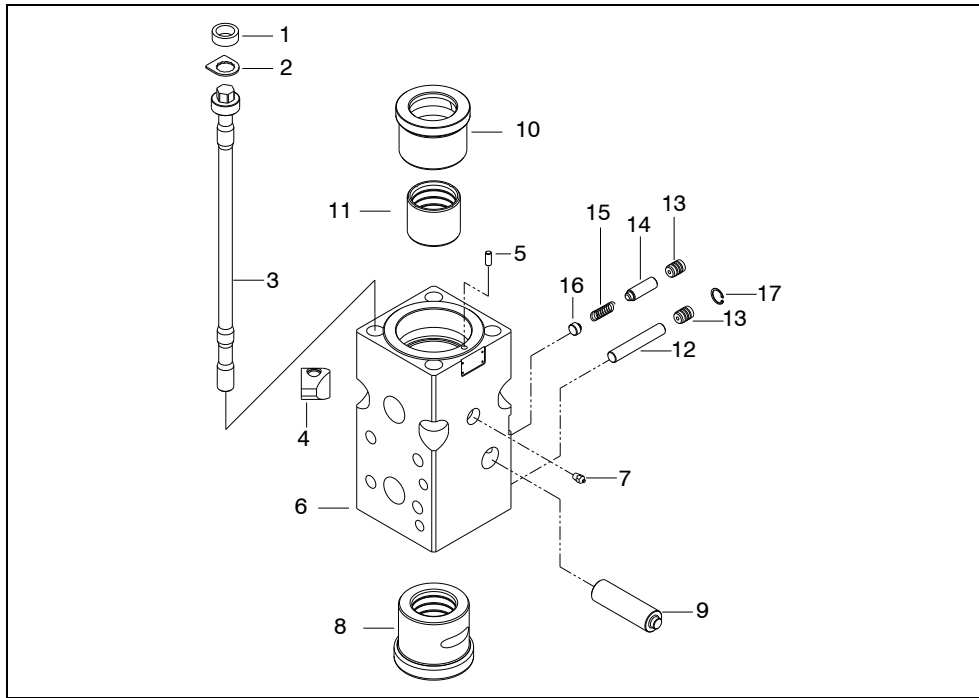


Fig 4-15 Front Head Components - Model AR70

See separate figure & parts list for AR70B & AR70C

Table 4.11 Front Head & Side Rod AR70

See separate figure & parts list for AR70B & AR70C

Item	Description	Part No.	Qty	Remarks
1	Rubber Ring	676169	4	
2	Lock plate	676168	4	
3	Side Rod	676167	4	
4	Nut	676187	4	
5	Alignment Pin	676183	1	
6	Front Head	676186	1	
7	Lubrication Fitting	816675	1	
8	Tool Bushing	676191	1	
9	Tool Retainer Pin	676188	1	
10	Impact Ring	676184	1	
11	Upper Bushing	676185	1	
12	Bushing Retainer Pin	676194	1	
13	Plug	676197	2	
14	Plunger Pin	676193	1	
15	Plunger Spring	676196	1	
16	Plunger Pin Spring Guide	676195	1	
17	Snap Ring		1	

4.0 Parts Information – [cont'd]

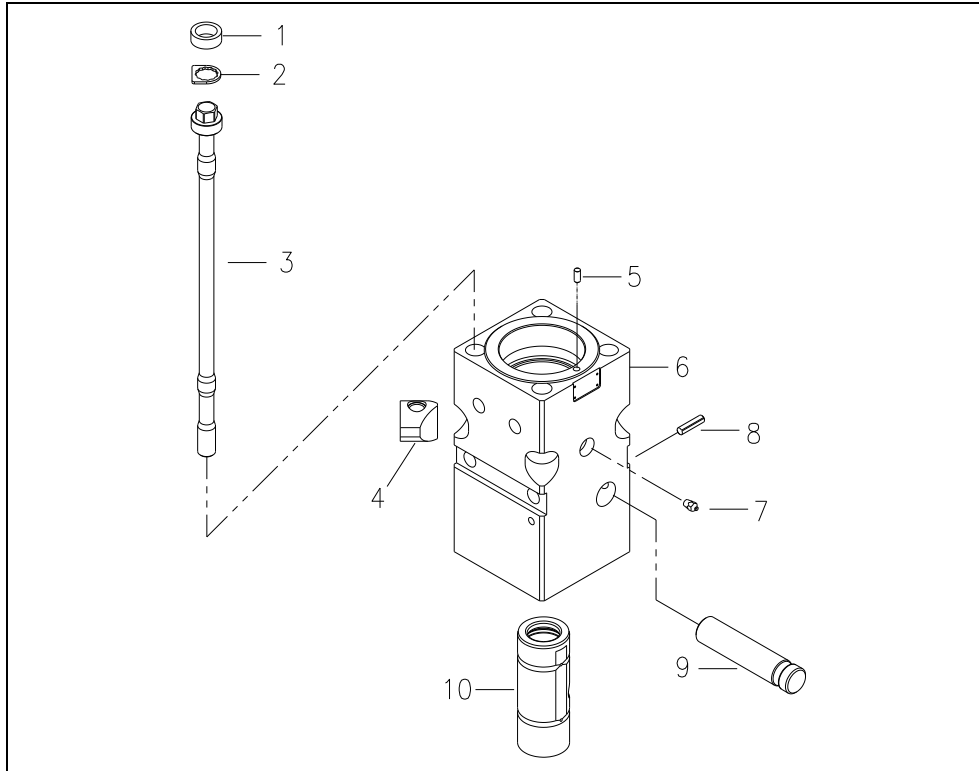


Fig 4-16 Front Head Components – Models AR70B & AR70C

See separate figure and parts list for AR70

Table 4.12 Front Head & Side Rod AR70B, AR70C

See separate figure and parts list for AR70

Item	Description	Part No.	Qty	Remarks
1	Rubber Ring	676169	4	
2	Lock plate	676168	4	
3	Side Rod	676167	4	
4	Nut	676187	4	
5	Alignment Pin	676183	1	
6.1	Front Head	103014	1	AR70B, AR70C SN-00144 & below
6.2		571032		AR70C SN-00145 & above
7	Lubrication Fitting	816675		
8.1	Roll Pin - M10	677218	1	AR70B, AR70C SN-00144 & below
8.2				573853
9.1	Tool Retainer Pin	102877	1	AR70B, AR70C SN-00144 & below
9.2				573854
10.1	Tool Bushing	102876	1	AR70B
10.2		571033		AR70C SN-All

4.0 Parts Information – [cont'd]

Restore the performance and maintain the reliability of the breaker by replacing common wear items. Tune-up kits include a full set of seals, accumulator membrane, tool bushing and retainer pin.

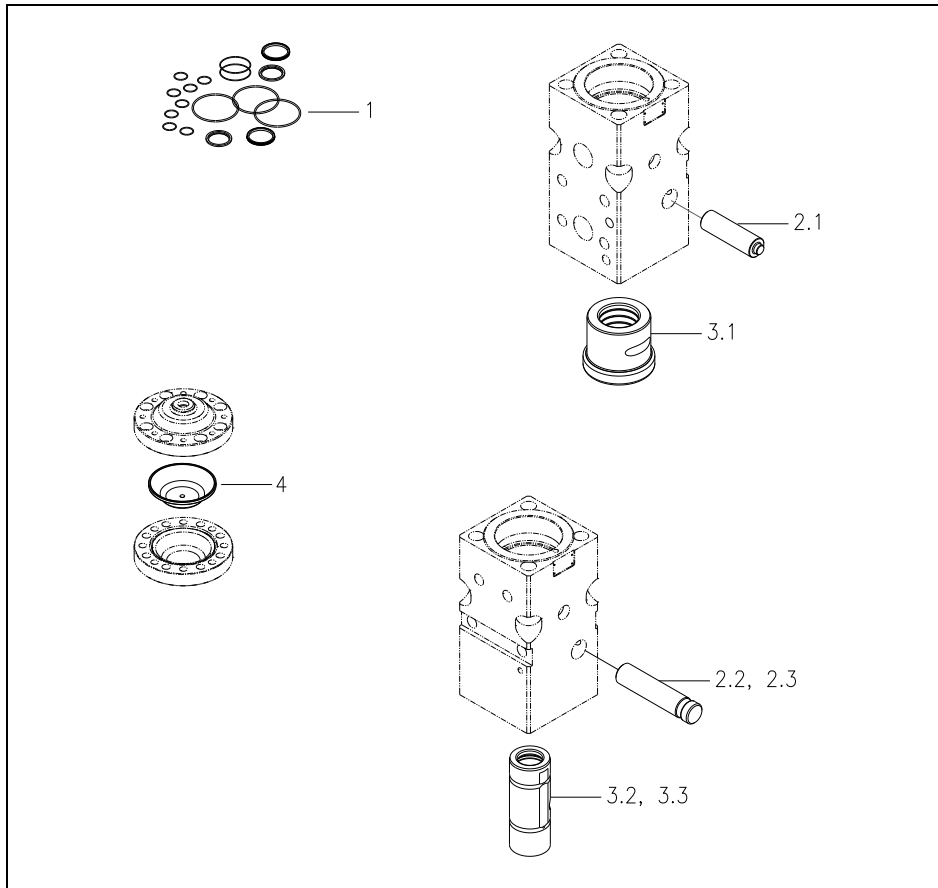


Fig 4-17 Tune-Up Kit

Table 4.13 Tune-Up Kit

Item	Description	Part No.	Qty	Remarks
1-4	Tune-up Kit	101352	1	AR70
		574434		AR70B
		571052		AR70C SN-00144 & below
		574113		AR70C SN-00145 & above
1	Seal Set	676152	1	AR70-Series
2.1		676188		AR70
2.2	Tool Retainer Pin	102877	1	AR70B, AR70C SN-00144 & below
2.3		573854		AR70C SN-00145 & above
3.1		676191		AR70
3.2	Tool Bushing	102876	1	AR70B
3.3		571033		AR70C SN-All
4	Membrane	676162	1	AR70-Series

4.0 Parts Information – [cont'd]

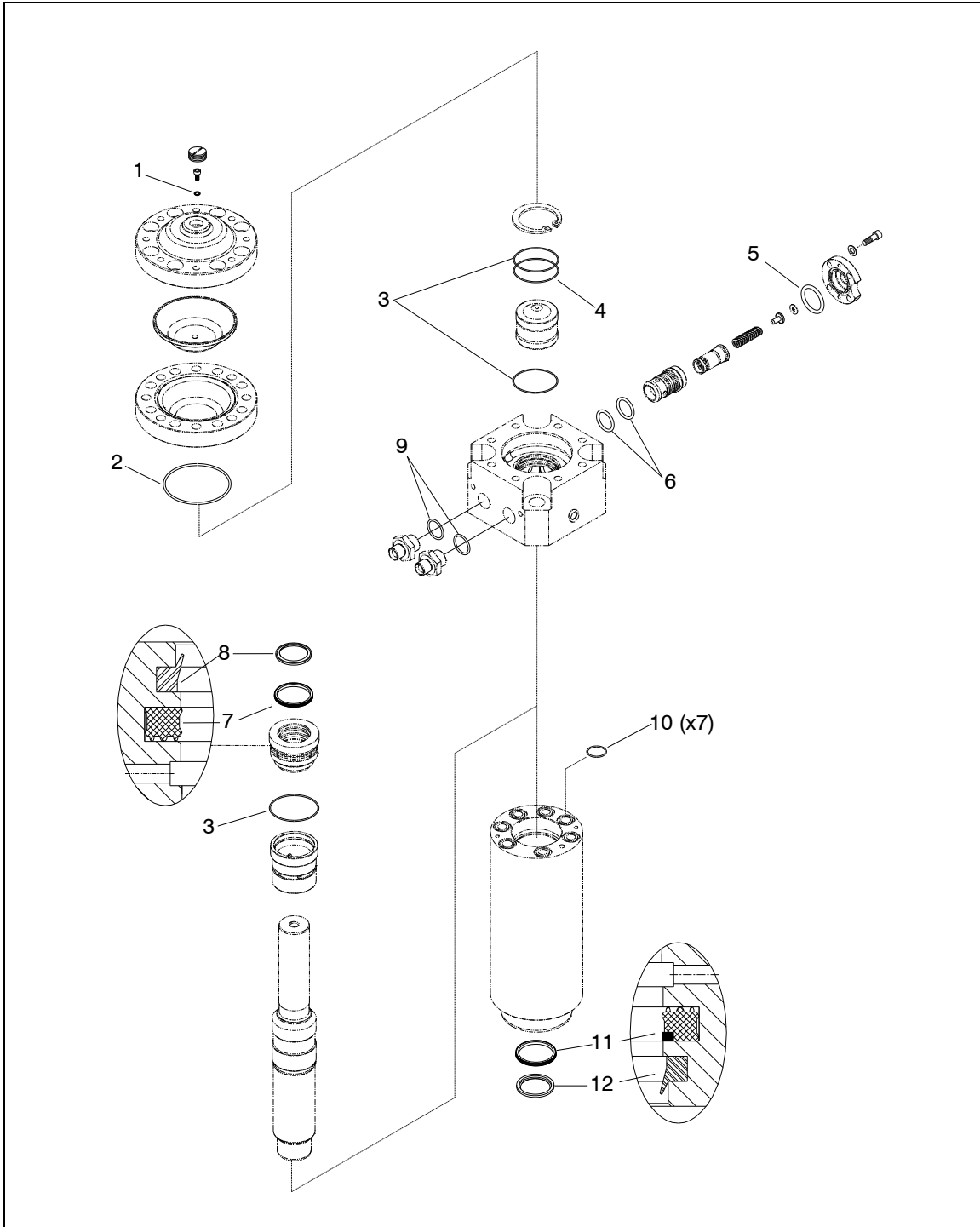


Fig 4-18 Seal Set – AR70 Series



Refer to the instructions given in Repair Manual 101230 for proper assembly of parts.

4.0 Parts Information – [cont'd]**Table 4.14 Seal Kit – AR70 Series ¹⁾**

Item	Description	Part No.	Qty	Remarks
---	Seal Set	676152	1-Set	Set includes items 1-13
1	Usit Ring	676201	1	
2	O-Ring	676202	1	
3	O-Ring	676203	3	
4	Back-Up Ring	676205	1	
5	O-Ring	676206	1	
6	O-Ring	676204	2	
7	Piston Seal, Upper	676207	1	
8	Upper Wiper, Piston	676208	1	
9	O-Ring	676204	2	Discard if adapter is equipped with bonded seal
10	O-Ring	676209	7	
11	Piston Seal, Lower	676210	1	
12	Lower Wiper, Piston	676211	1	
13	Thread Lube	676927	1	See application note

¹⁾ **Parts shown in Table 4.14 are for use in AR70, AR70B & AR70C**

IMPORTANT

Seal set includes packet of thread lubricant for use on side rod threads. DO NOT apply to seals!

4.0 Parts Information – [cont'd]

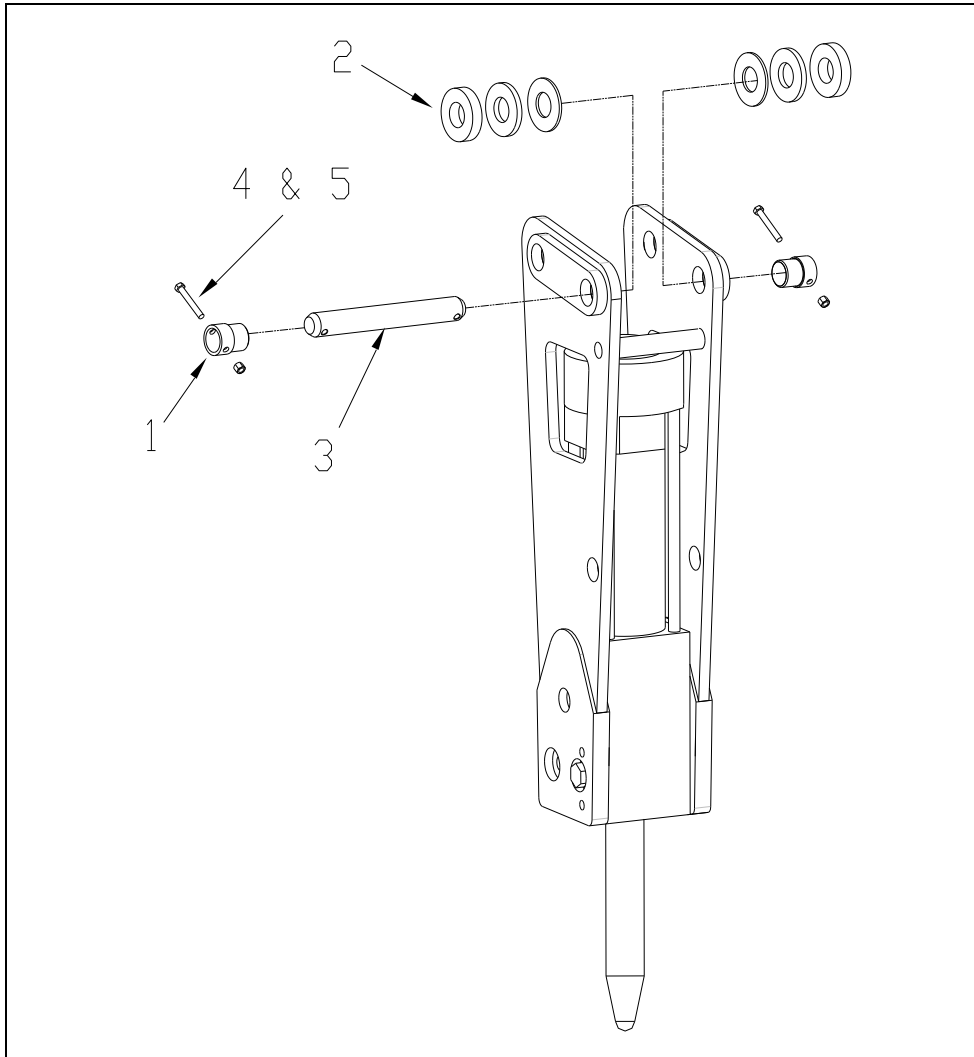


Fig 4-19 AR70 Series Mounting Kit for Housing Plate Type "XSF"

4.0 Parts Information – [cont'd]**Table 4.15 Mounting Kits for Configuration Type XSF ^{1, 2)}**

Item	Description	Part No.	Qty	Remarks
---	AR70-XSF Configuration		---	
---	AR70B-XSF Configuration		---	
---	AR70C-XSF Configuration		---	
1-5	25* mm	A101735	1	
1-5	30* mm	100207	1	
1-5	35* mm	100283	1	
1-5	38* mm	100364	1	
1-5	40* mm	100204	1	
1-5	45* mm	100324	1	No flange bushing. Uses pin collar
1-5	50* mm	101808	1	Includes pin collar and sleeve bushing
1-5	1.00* (in)	100208	1	
1-5	1.25* (in)	100209	1	
1-5	1.50* (in)	A100210	1	

¹⁾ Part numbers shown in Table 4.15 are for use with AR70, AR70B & AR70C equipped with XSF Housing Plates. Each AR70, configured with the mounting type XSF, come standard with one of the mounting kits listed in Table 4.15. Selection of the mounting kit requires the make & model of the machine. For carriers equipped with a quick mounting coupler additional mounting information will be necessary.

Table 4.16 Each “XSF” Mounting Kit Includes the Following

Item	Description	Part No.	Qty	Remarks
1.1	Flange Bushing	Varies ²⁾	4	
1.2	Pin Collar		4	Replaces Flange Bushing in Kits 100324 & 101808
2	Spacer 3/16”, 3/8” & 3/4”	Varies	12 ⁽³⁾	
3	Pin Ø	Varies ²⁾	2	
4	Hex Head Bolt	653343	4	
5	Hex Nut	759808	4	

²⁾ Part number of bushings and pins is determined by carrier make and model.

³⁾ Each XSF Kit includes spacers. These spacers come in assorted thicknesses. Combine quantity and thickness as required for proper spacing.

5.0 Tools – Standard & Specialty

5.1 Standard Tools

The three most commonly used tool points for concrete and rock demolition are the Chisel, Conical and Blunt.

A) Chisel Tool – Suitable applications include soft rock and general demolition of concrete. The tool penetrates the material, wedging it apart. Useful when cutting action is required, e.g. benching and trenching. (Available in Cross-Cut and In-Line wedge.)

B) Conical Point - Same applications as the chisel. The conical tool also penetrates, but unlike the chisel, the rounded shape resists twisting that can cause burring in the tool's retainer pin area.

C) Blunt Tool – Designed for impact breaking. The blunt tool is effective in secondary breaking of oversized rock or boulder reduction.

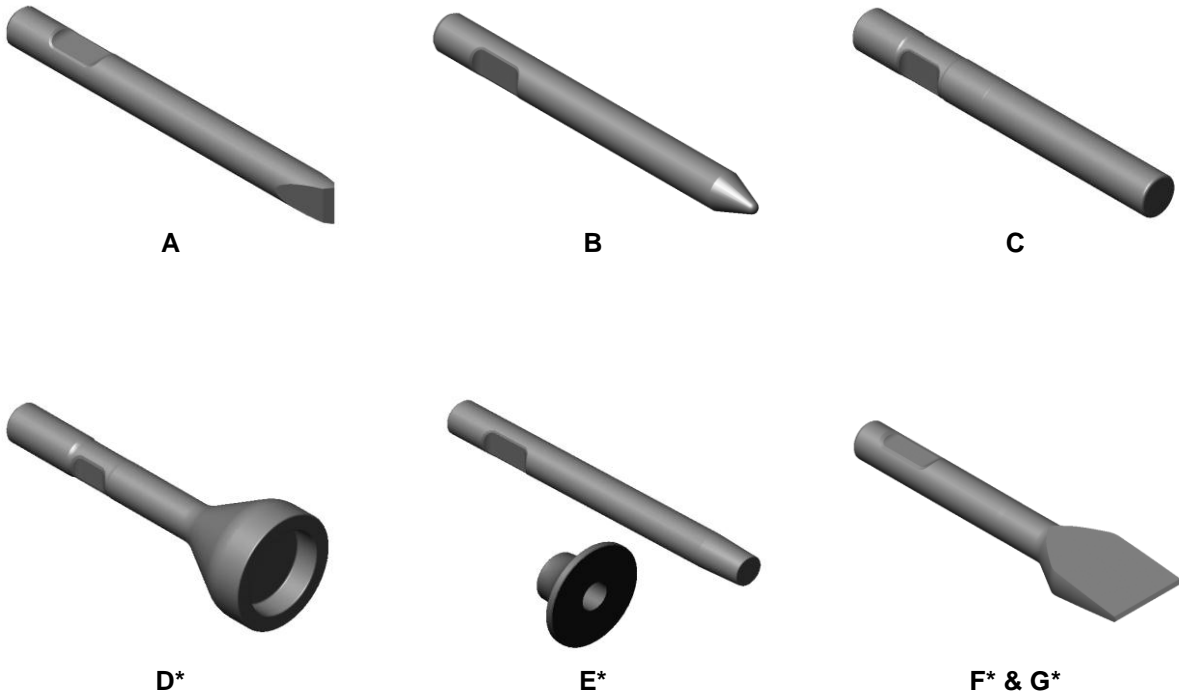


Fig. 5-1 Standard and *Specialty Tools
 (*General illustrations shown. Actual tool design may vary)

5.2 Specialty Tools* (Not available for all models).

Specialty tools have a specific purpose or function designed into each tool. These tools can extend the versatility of a breaker, thus increasing productivity and eliminating the need for additional equipment.

D) Post Driver – For driving posts, pipes, etc.

E) Tamper – Designed to compact loose material.

F) Frost Cutter – For cutting into frozen ground.

G) Asphalt Cutter – Designed to cut seams in asphalt for removal. Available in Cross-Cut and In-Line configurations.

5.0 Tools Standard & Specialty – [cont'd]**Table 5.1 Tools – AR70 & AR70B ¹⁾*******See separate parts list for AR70C*****

Item	Description	Part No.	TD ³⁾ in. x WL ⁴⁾ in. (mm)	Weight lbs. (kg.)
A¹⁾	Chisel Cross Cut	658517	2.77 (70) x 18 (457)	40 (18)
B	Conical Point	658518	2.77 (70) x 18 (457)	40 (18)
---	Chisel In-Line (Not Pictured)	100488	2.77 (70) x 18 (457)	40 (18)
C	Blunt End	100585	2.77 (70) x 18 (457)	40 (18)
---	Bell End (Not Pictured)	100993	2.77 (70) x 12 (305)	40 (18)
D	Post Driver	101017	2.77 (70) x 16 (406)	73 (33)
E	Tamper	100970	2.77 (70) x 12 (305)	192 (87)
F	Frost Cutter	100994	2.77 (70) x 12 (305)	37 (17)
G	Asphalt Cutter	100971	2.77 (70) x 21 (533)	93 (42)
---	Relieved Moil (Not Pictured)	100489	2.77 (70) x 18 (457)	40 (18)

¹⁾ Part numbers shown in Table 5.1 are for use with AR70, AR70B. **Standard tool supplied with breaker shown in Bold.**

²⁾ For availability of tool types not listed, contact Allied

³⁾ TD - Tool Diameter

⁴⁾ WL - Working Length

Table 5.2 Tools – AR70C ⁵⁾*****See separate parts list for AR70 & AR70B*****

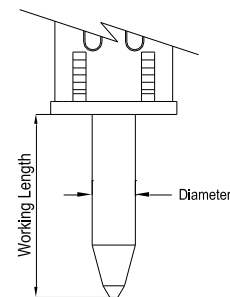
Item	Description	Part No.	TD ³⁾ in. x WL ⁴⁾ in. (mm)	Weight lbs. (kg.)
A ⁵⁾	Chisel Cross Cut	571014	2.48 (63) x 15 (380)	25 (11)
B	Conical Point	571042	2.48 (63) x 15 (380)	25 (11)
---	Chisel In-Line (Not Pictured)	--- ²⁾	2.48 (63) x 15 (380)	25 (11)
C	Blunt End	571043	2.48 (63) x 15 (380)	25 (11)
D	Post Driver	571044	2.48 (63) x 16 (406)	55 (25)
E	Tamper	571046	2.48 (63) x 12 (305)	192 (87)
F	Frost Cutter	571045	2.48 (63) x 12 (305)	31 (14)
G	Asphalt Cutter	571047	2.48 (63) x 19 (483)	66 (30)

²⁾ For availability of tool types not listed, contact Allied

³⁾ TD - Tool Diameter

⁴⁾ WL - Working Length

⁵⁾ Part numbers shown in Table 5.2 are for use with AR70C. **Standard tool supplied with breaker shown in Bold.**

**Fig. 5-2 Tool Diameter & Working Length**

6.0 Tool & Bushing Lubrication - Chisel Paste

Each time the breaker is put to work, the tool and bushing are subjected to extreme pressure, heat and abrasive debris. These parts are made of high quality, heat-treated alloy steel. Yet, inattention to relubrication schedules or using the wrong grease will cause rapid wear and render parts unusable. Replacing these parts can be costly, both in terms of down time and price.

When choosing a grease to lubricate the bushing and tool, it's important to emphasize that the "right type" is equally important as "how much" and "how often".

There are many types of grease available, both basic and specialized. Basic types are generally suited for use in a variety of applications. Specialized types are highly developed and possess unique properties that are intended for specific tasks. Lubricating the bushing and tool requires the right type of grease. Allied Chisel Paste is specifically formulated to provide the bushing and tool with superior protection against wear and friction related damage.

Allied Chisel Paste contains a high solid content, which is desirable, especially in sliding applications that involve heavy side loading. Solids maintain a high-strength boundary between the bushing and tool that effectively reduce metal-to-metal contact and thereby reduce heat-generated damage from friction.

Basic lubricants, in comparison, are less developed and are usually labeled "General Purpose", or "Multi-Purpose". They are usually less expensive because they possess few additives and are unlikely to contain any solid content. When these types are subjected to heavy side loading, the lubricant is squeezed out, leaving nothing to protect the bushing and tool against friction related damage.

Additionally, not all are formulated for high temperature applications. The breaker tool gets extremely hot during operation. Higher temperatures can cause grease to lose its ability to cling.

Many factors, including operator technique, determine whether the breaker will remain productive. Everyday wear-and-tear is unavoidable and no other component receives more punishment than the bushing and tool. But with attention to maintenance, including timely lubrication, and through the regular use of Allied Chisel Paste, the wear of these parts and the cost to replace them can be minimized.

Allied Chisel Paste Specifications

NLGI Grade - No. 2

Thickener Type – Calcium sulfonate complex
Solids include graphite and copper

Dropping Point ° F (° C), min. – 500 (260)

Oil Viscosity @ 100° F (40° C) – 200-240

Application methods include brushing, grease gun and all Allied automatic grease dispensers

IMPORTANT

Application Restriction - Chisel Paste is NOT suitable for use with roller type bearings.

Table 6-1 Ordering Information

Packaging	Packaging	Part No.
14.5 oz Tubes*	Qty x 10	574430
14.5 oz Tubes*	Qty x 30	574431
35 lb Bucket	Qty x 1	676698
120 lb Drum	Qty x 1	679968

*Fits standard hand operated grease guns.

IMPORTANT

Contamination interferes with reliable operation and will shorten component life. Prevent dirt and debris from entering the lubrication system. Always clean the area around connections and cartridge prior to opening the system. Keep lubricants properly stored in their original, sealed container until ready for use.

7.0 N2 Gas Charge Kit

7.1 General Description

The accumulator is a self-contained pressure vessel with a flexible membrane dividing the inner chamber. The lower chamber is used to receive, store and discharge pressurized oil. Pressurized gas occupies the upper chamber.

Filling with nitrogen (N2) gas is accomplished with the charging unit (Fig. 7-1) and a commercially available nitrogen bottle. Table 6.1 lists items included in the charge kit.

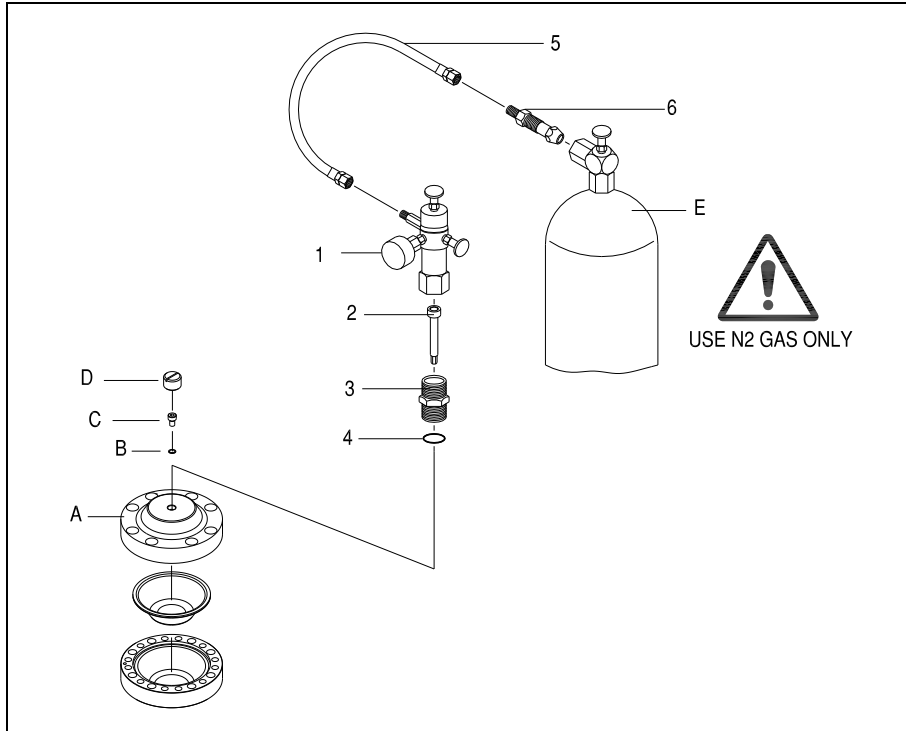


Fig. 7-1 N2 Gas Charge Kit

Table 7.1 N2 Gas Charge Kit

Item	Part No.	Description	Qty	Remarks / Specifications
---	570071	N2 Gas Charge Kit	1-Kit	Kit includes 1,2,3,4,5,6
1	100527	Charge Valve with Gauge	1	Includes 2-6 (& storage case - not shown)
2	40601	Socket Bolt	1	
3	R101635	Adaptor	1	
4	901135	O-ring	1	
5	N/A	Hose	1	8 Ft. [2.5 M] Not Sold Separately
6	N/A	Gas Bottle Adapter	1	Not Sold Separately
E	N/A	Nitrogen Gas Bottle	---	Not Supplied (Source Locally)
A,B,C, D,E	---	Accumulator, U-sit ring, Bolt, Cap, N2 Gas Bottle	---	Items A,B,C,D,E not included in charge kit. They are shown for reference only.



Read, understand and follow all instructions given in Repair Manual 101230 for the safe and proper use of this tool.

8.0 How To Order Spare Parts

Your local Allied dealer requires the Product Name, Model and Serial Number to better assist you with questions regarding parts, warranty, operation, maintenance, or repair. This information should be noted in Section 2.3 of this manual.

Product _____
 Model _____
 Serial No. _____

Please fill out completely

Line	Part Number	Description	Quantity	Price
1				
2				
3				
4				
5				
6				
7				
8				
9				
10				

Your contact information

Your Name _____ Company Name _____
 Phone _____ Account Number _____
 Fax _____ Purchase order _____
 Email _____ Shipping carrier _____

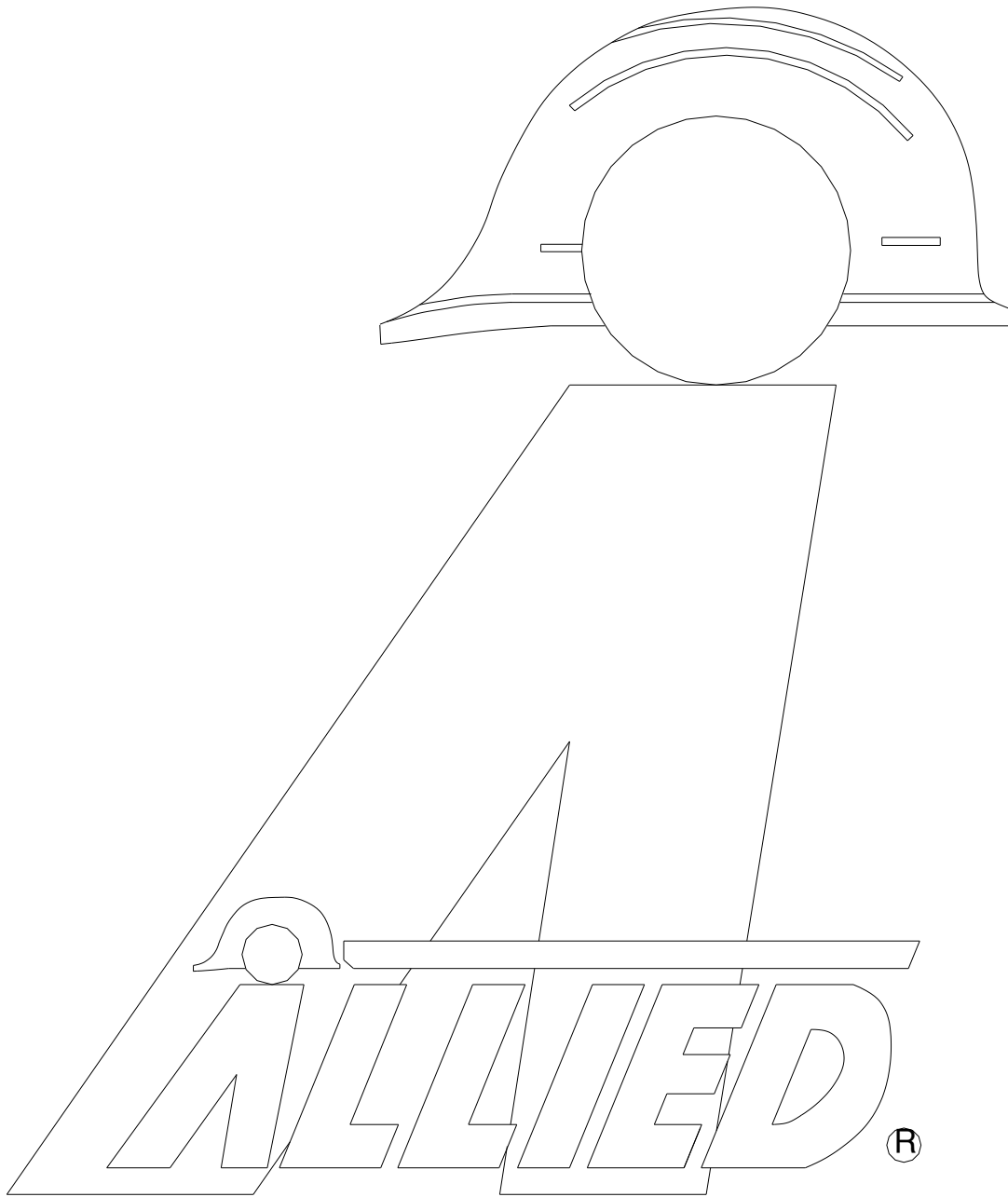
*See note below

Billing Address _____ Shipping Address _____

*Note: All backordered parts will be shipped when available via the same method as the original order unless initialed and checked below:

Initials _____

- Ship complete order only
- Ship available parts and contact customer on disposition of backordered parts
- Other – specify below




ALLIED®
Construction Products, LLC

3900 Kelley Avenue, Cleveland, Ohio 44114
Tel: 216-431-2600 Fax: 216-431-2601
e-mail: Sales@AlliedCP.com
website: <http://www.AlliedCP.com>