

AR Series

Hydraulic Impact Breaker

Model
AR 85
AR 85B



ALLIED

Parts Manual



PM103330

Keep this manual in a convenient location so that it is easily accessible for future reference. Contact your Allied Dealer or the Allied Customer Service Department for replacement manuals. Inquiries regarding the content of this manual must include effective date shown on inside cover.

Contact Information

3900 Kelley Ave

Cleveland, Ohio 44114

E-mail: sales@alliedcp.com

Tel: 216-431-2600

Fax: 216-431-2601

Revision History of Document No. PM103330

Continuous improvement of our products is an Allied policy. The material in this publication, including figures, captions, descriptions, remarks and specifications, describe the product at the time of its printing, and may not reflect the product in the future. When changes become necessary, these will be noted in the table below. Specifications are based on published information at the time of publication. Allied Construction Products, LLC, reserves the right to change, edit, delete or modify the content of this document, including descriptions, illustrations and specifications without prior notification. For product or document updates go to www.alliedcp.com.

<u>Effective Date</u>	<u>Page</u>	<u>Summary of Change</u>
2015, Mar	6,8,20	Introduce housing box. Begin S/N-01213. Add Figures and Parts Table.
2014, Mar		Introduce top down lube. Begin S/N-01172. Revise Table 4.3 & Fig. 4-3 and Table 6.2 & Fig. 6-2.
2013, Apr	17	Revise Table 5.1 Items A, B
2009, Sep	Throughout	Update format, remove technical specifications.
2008, Feb	6	Revised hydraulic connections.
2007, Aug		Revise Tune-Up Kit
2006, Nov	Throughout	Introduce AR85B. Begin S/N0. Add Figures and parts tables. Parts are common with earlier units except where denoted.
2006, Apr	5	Revise Table 3-2
2006, Jan	All	Revised Format
2005, Jun	5	Add P/N 571053
2003, Aug	1, 5, 7, 15, 19	Specs & Parts List

Table of Contents

<u>Section</u>	<u>Page</u>
Contact Information & Document Revisions...	i
Table of Contents.....	ii
1.0 Introduction and Scope.....	1
1.1 Purpose of This Manual.....	1
1.2 How to Order Replacement Manuals.....	1
1.3 Related Publications.....	1
1.3.1 Safety Operation & Maintenance Manual	2
1.3.2 Repair Manual.....	2
1.3.3 AEM Safety Manual - Hydraulic Breakers	2
2.0 Equipment Identification.....	3
2.1 Equipment Identification Tag.....	3
2.2 Serial Number Identification.....	3
2.3 Record of Equipment.....	3
3.0 Safety and Information Labels.....	4
4.0 Parts Information.....	7
4.1 Housing Plates - AR85 & AR85B.....	7
4.1.2 Housing Box - AR85B.....	8
4.2 Breaker Assembly.....	9
4.3 Hydraulic Connections.....	13
5.0 Tool Selection Guide.....	14
5.1 Standard Type Tools.....	14
5.2 Specialty Type Tools.....	14
5.3 Tool Selection.....	15
5.4 Chisel Paste.....	15
6.0 Service Kits and Tools.....	16
6.1 Tune-up Kit.....	16
6.2 Seal Set.....	17
6.3 Accumulator N2 Gas Charge Kit.....	19
7.0 Mounting Information.....	20
8.0 How to Order Spare Parts	21

<u>List of Figures</u>	<u>Page</u>
2-1 Location of Equipment Serial Number.....	3
2-2 Equipment Identification Tag.....	3
3-1 thru 3-13 Label Description.....	4
3-14 Position of Safety and Identification Labels	6
4-1 Housing Plates & Components AR85.....	7
4-2 Housing Plates & Components AR85B.....	7
4-3 Housing Box & Components AR85B.....	8
4-4 Breaker Assembly.....	9
4-5 Hydraulic Connections.....	13
5-1 Standard & Specialty Tools.....	14
5-2 Tool Diameter & Working Length.....	14
6-1 Tune-Up Kit.....	16
6-2 Seal Set.....	17
6-3 Accumulator N2 Gas Charging Kit.....	19
7-1 Housing Plates.....	20
7-1 Housing Box.....	20
7-1 Connection Plate.....	20

<u>List of Tables</u>	<u>Page</u>
1.1 About This Manual.....	1
3.1 Label Set.....	6
4.1 Housing Plates - AR85.....	7
4.2 Housing Plates - AR85B.....	7
4.3 Housing Box - AR85B.....	8
4.4 Breaker Assembly.....	10
4.5 Hydraulic Connections.....	13
5.1 Tool Selection.....	15
5.2 Chisel Paste.....	15
6.1 Tune-up Kit.....	16
6.2 Seal Set.....	18
6.3 Accumulator N2 Gas Charge Tool.....	19
7.1 Mounting Information.....	20

1.0 Introduction and Scope

1.1 Purpose and Scope of This Manual

Table 1.1 About This Manual



Document ID.	PM103330
Type	Spare / Replacement Parts List
Current Status*	See Inside Cover
Product Name:	Mounted Hydraulic Impact Breaker
Series	AR
Applicable Model[s]:	AR85, AR85B
Years of Manufacture:	Begin 2003
*Inquiries regarding this manual must include effective date shown on inside cover	

The material presented in this manual has been prepared in support of the product named in Table 1.1. It's intended solely for use with expressed model(s) and may be unsuitable with models unnamed.

The publication identified in Table 1.1 was created solely for information purposes and should not be considered all-inclusive. If further information is required, contact your local Allied dealer or the Allied Customer Service Department.

Parts Manuals do not include safety precautions or operating procedures. Figures depict views that are intended for parts identification and not for purposes of repair or service of the product. Material presented in this manual, including tables, figures, descriptions and captions, may show equipment that is optional.

How to use this Manual:

The Allied work tool consists of separate components and partial assemblies. Components are identified with the aid of figures, captions, item key, part name and quantity. If needed, 'remarks' and 'specifications' will further clarify the part's description or denote assignment with select unit(s) by serial number.

An order form is provided at the back of this manual. Prior to ordering parts, confirm that the information recorded on the equipment's identification label corresponds with Table 1.1. For the location of this label, refer to Section 2.0 of this manual.

The content of this document has been reviewed for accuracy. Allied Construction Products, LLC has

endeavored to deliver the highest degree of accuracy and every effort has made to provide information as complete as possible. However, continuous improvement of our products is an Allied policy. The material in this publication, including figures, captions, descriptions, remarks and specifications, describe the product at the time of its printing, and may not reflect the product in the future. A table of revision history for this document is found on the inside cover.

1.2 How To Order Replacement Publications

This manual is an integral part of this product. Keep it in a convenient location so that it is easily accessible for future reference. If replacement manuals are required, they may be ordered by contacting your Allied dealer service center. Manuals may also be viewed and downloaded at: www.alliedcp.com

1.3 Related Publications

Allied Construction Products, LLC offers the following publications for the product identified in Table 1.1.

1.3.1 Safety, Operation & Maintenance Manual SOM576778

Applicable Models: AR Series 70D,75B,85B,95B

The Safety, Operation and Maintenance Manual has been prepared to assist the operator and maintenance personnel with the information necessary for the safe and proper use of the Allied work tool.

Content in the Safety, Operation & Maintenance Manual includes:

- Safety Information
- Equipment Serial Number and Model Identification
- Technical Data (Weight & General Dimensions)
- Basic Guidelines for Installation and Set-up
- Pre-Operation Inspection
- How to Operate the Allied Work Tool
- Maintenance Schedule
- N2 Gas Charging Instructions
- Tool and Guide Bushing – Lubrication, Inspection, Wear Limits and Replacement
- Troubleshooting
- Removal From Carrier, Transporting, Lifting & Storage

1.0 Introduction and Scope – [cont'd]

1.3.2 Repair Manual A101230

Applicable Models: AR-Series AR48 thru AR95B

The Repair Manual has been prepared to assist the Service Technician with the information necessary for the disassembly & reassembly of the Breaker.

Content includes:

Safety Information

Disassembly & Reassembly

Bolt Torque Specifications

Wear Limits of Parts

Accumulator N2 Gas Charging Instructions

Bushing Replacement

1.3.3 AEM Safety Manual for Hydraulic Breakers

The Association of Equipment Manufacturers offers a safety manual designed for operators and maintenance personnel of hydraulic mounted breakers. The manual is available in Spanish, French and English. It is published in an illustrated format of sensible do's and don'ts, featuring typical daily situations on the job site. Content includes safety tips concerning the workplace and equipment, start up and shut down guidelines and special operating and maintenance precautions.

This publication is available by contacting:

Association of Equipment Manufacturers

Toll free 1-866-AEM-0442

E-mail: aem@aem.org

Website: www.aem.org

Ask for FORM CMHB-1004, Hydraulic Mounted Breakers.

This publication is also available through Allied under part number 953076 (English). To order a copy, contact the Allied Customer Service Department.

2.0 Equipment Identification

2.1 Location of the Serial Number

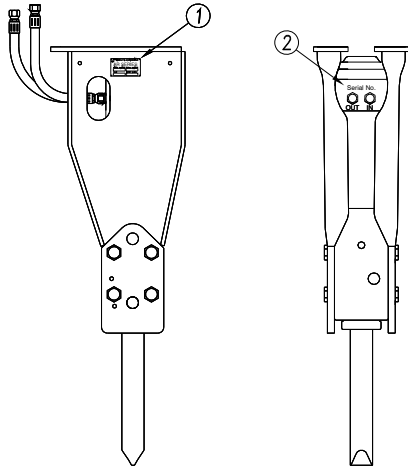


Fig 2-1 Equipment Identification

The Serial Number assigned to this equipment is stamped in the following locations:

- Location 1: Equipment Identification Tag
- Location 2: Valve Housing

2.2 Equipment Identification Tag



Fig 2-2 Equipment Identification Tag

The Equipment Identification Tag is affixed to the housing plates. It provides the following information:

- Manufacturer's name
- Address
- Product name
- Model number
- Serial number
- Year of manufacture
- Weight

Verify that the information contained on the Identification Tag corresponds with the information provided in Section 1 of this manual.

2.3 Owner's Record of the Equipment

Your local Allied dealer requires complete information about the equipment to better assist you with questions regarding parts, warranty, operation, maintenance, or repair.

- Record the equipment's serial number to the space provided below. This information may be obtained from the Equipment Identification Tag. Refer to Fig 2-1 for the location of the tag.
- Indicate the date in which the Allied equipment was placed into service.
- Indicate the date in which the Warranty Registration form was completed and returned to Allied.

Product Name: Hydraulic Breaker

Series: AR

Model / Part No. AR85 / A103310

Model / Part No. AR85B / 572540

Serial Number: _____

In Service Date: _____




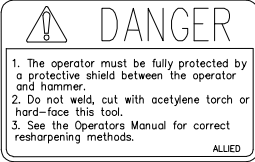


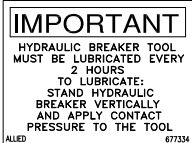
Registration Date: _____

3.0 Safety, Identification and Information Labels

3.1 Label Description and Location


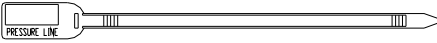
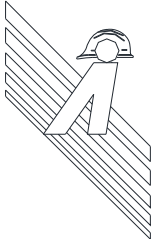

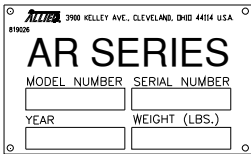
Labels affixed to the Allied equipment communicate important information. Safety labels alert personnel of potential hazards. Other labels provide product identification and instructions important to operation and service. Keep labels clean so that words and

illustrations are readable. Replace damaged or missing labels before operating this equipment. Refer to Table 3.1 for ordering information. Refer to Figure 3-14 for the position of the label on the equipment.

Fig.	Label	Description
3-1		READ THE MANUAL – Safety Alert Symbol with pictogram of open book. It is important to read and understand information and follow instructions contained in the manual.
3-2		STAY CLEAR – Decal alerts personnel and by-standers to maintain a safe distance from the Breaker during operation.
3-3		FLYING DEBRIS – Alerts personnel to the hazard of fragments becoming projectiles. It directs personnel to the Safety, Operation and Maintenance Manual for instructions about the use of a shield between the breaker and machine to protect the operator from injury. NOTE: Place the smaller size decal in a conspicuous location inside the operator’s cab.
3-4		TOOL SHARPENING – Decal warns against welding, cutting, or hard-facing the tool. It directs personnel to the Safety, Operation and Maintenance Manual for approved sharpening methods.
3-5		Pressurized Nitrogen Accumulator – Alerts personnel to the accumulator, warning of nitrogen gas under pressure. Directs personnel to the Safety Operation and Maintenance Manual for service instructions.
3-6		LIFT POINT – Decal identifies approved lift points.
3-7		LUBRICATION – Decal identifies the lubrication point, frequency and importance of proper positioning with contact pressure applied to tool before lubricating.

3.0 Safety and Information Labels –[cont’d]

3.1 Label Description and Location -[cont’d]

<u>Fig.</u>	<u>Label</u>	<u>Description</u>
3-8		Lubrication Point – Decal identifies lubrication points. Refer to the manual(s) for grease type, re-lubrication schedules and procedures. Risk of equipment damage if instructions are not followed.
3-9		OIL SUPPLY LINE “PRESSURE” I.D. TAG – A red colored cable tie marked “PRESSURE LINE” is attached to the supply hose for ease of identification between hoses.
3-10		Allied “A” with Hard Hat and Background Stripes
3-11		ALLIED LOGO – This decal is the Allied brand identifier and is a registered trademark of Allied Construction Products, LLC.
3-12	AR85 AR85B	MODEL – Decal identifies the specific model.
3-13		EQUIPMENT ID TAG - Contains identifying information about the equipment, including: Manufacturer’s name, address, product name, model number, serial number, year of manufacture, and weight.

3.0 Safety & Information Labels- [cont'd]

Figures and descriptions represent standard configurations. Tables and figures are common to all serial numbers except where noted.

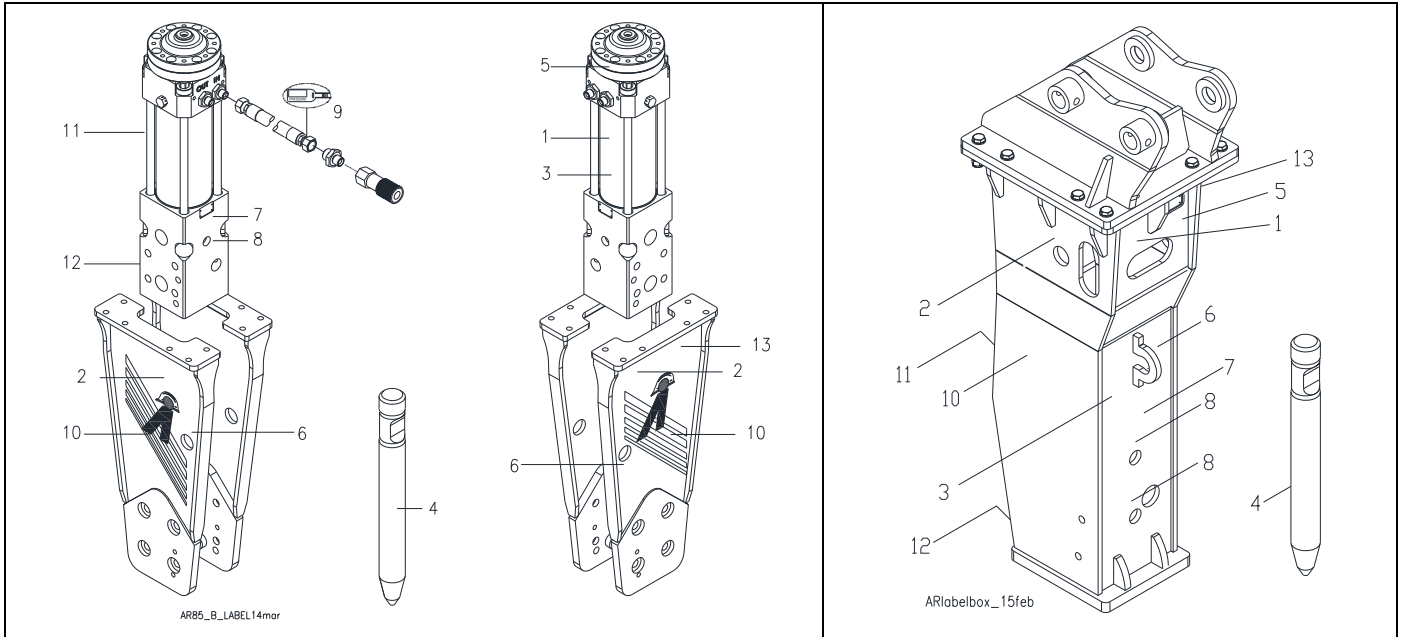


Fig. 3-14 Label Positions

Table 3.1 Label Set

Item	Description	Part No.	Model	Qty	Remarks / Specifications
---	Label Set Complete-AR85	103328		1-Set	Set includes 1-12
---	Label Set Complete-AR85B	572541	B	1-Set	Set includes 1-12
1	Decal – Read the Manual / Instructions	676984		1	
2	Decal – Stay Clear	657841		2	
3	Decal – Danger (Small)	657839		2	Place one of these in conspicuous location inside cab
4	Decal – Tool Sharpening	657838		1	
5	Decal – Pressurized Accumulator	102756		1	
6	Decal – Lift Point	676982		2	
7	Decal – Lube w/ Tool In	677334		1	
8	Decal – Lubrication Point	A101725		1	
9	Pressure ID Tag	818676		1	Attach to supply hose [IN]
10	Decal – Allied “A” w/ Stripes	576280		2	
11	Decal – Allied Logo	576287		1	
12.1	Decal – Model AR85	103329			
12.2	Decal – Model AR85B	572539	B	1	
13	Equipment ID Tag	819026		1	Item 13 not included in Set

4.0 Parts Information – Housing Plates

Figures and descriptions represent standard configurations. Tables and figures are common to all serial numbers except where noted.

4.1.1 Housing Plates

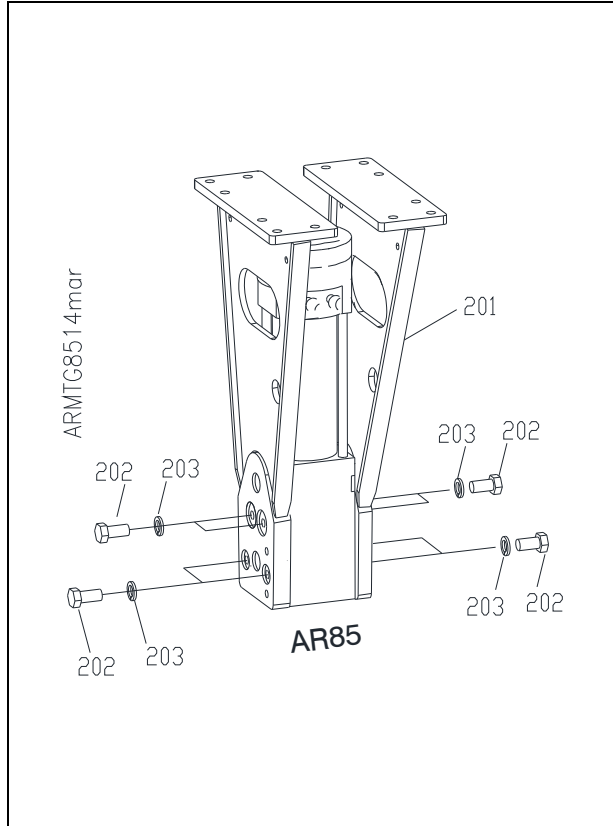


Fig. 4-1 Housing Plates – AR85

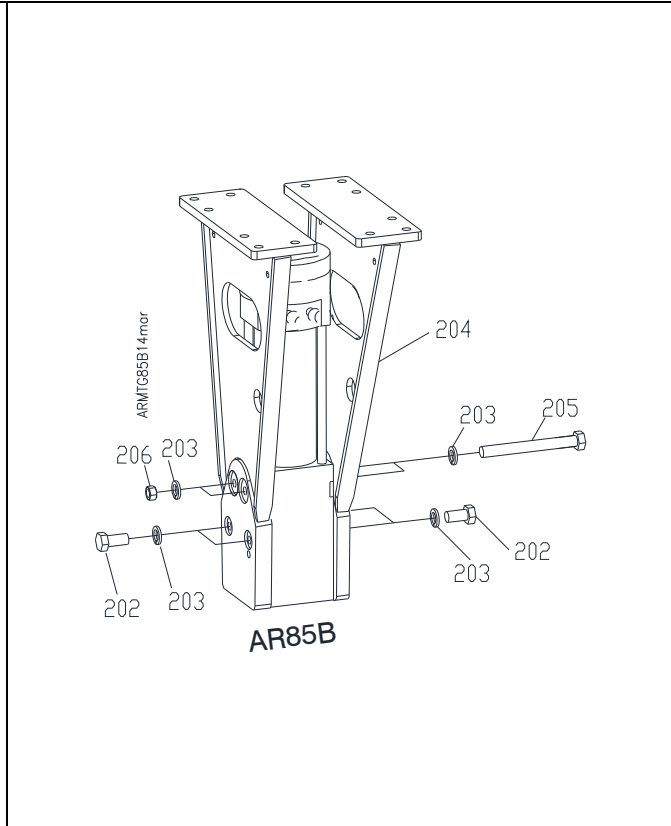


Fig. 4-2 Housing Plates – AR85B

Table 4.1 Housing Plates – AR85 (Fig. 4-1)

Item	Description	Part No.	Qty	Remarks / Specifications
201	Housing Plates LH / RH	658569	1-Set	Std Config. SR / SCS
202	Hex Head Bolt	103326	8	M27x50
203	Lock Washer	103327	8	

Table 4.2 Housing Plates – AR85B (Fig. 4-2)

Item	Description	Part No.	Model	Qty	Remarks / Specifications
202	Hex Head Bolt	103326	B	4	M27x50
203	Lock Washer	103327	B	8	
204	Housing Plates LH / RH	572534	B	1-Set	Std Config. SR / SCS
205	Hex Head Bolt	572537	B	2	M27x280
206	Hex Nut	572538	B	2	

4.1 Housing Plates

Figures and descriptions represent standard configurations. Tables and figures are common to all serial numbers except where noted.

4.1.2 Housing Box – AR85B

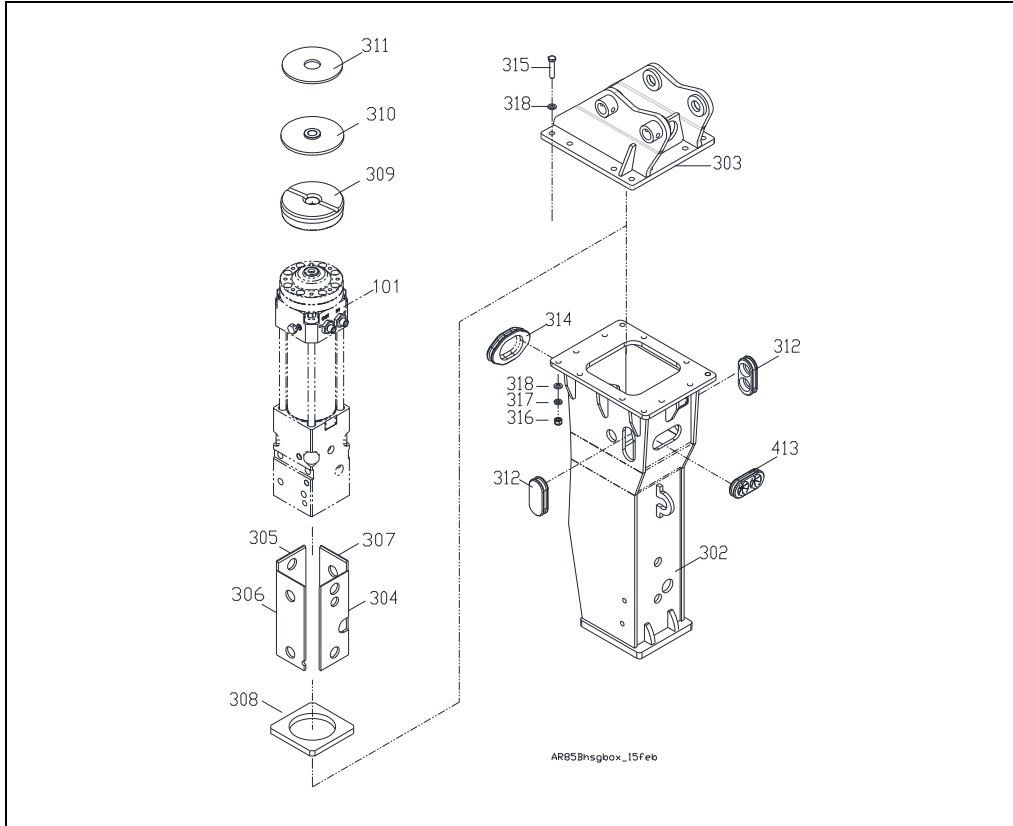


Fig. 4-3 Housing Box and Components – AR85B

Table 4.3 Housing Box – AR85B (Fig. 4-2)

Item	Description	Part No.	Model	Qty	Remarks / Specifications
101	Breaker Assy.	---	B		
302	Housing Box		B		
303	Mounting Bracket	Varies	B		Not included. Order separately.
304	Wear Plate	B0800030	B		
305	Wear Plate	B0800040	B		
306	Wear Plate	B0800050	B		
307	Wear Plate	B0800060	B		
308	Bottom Buffer	B0800070	B		
309	Top Buffer	B0800080	B		
310	Top Plate Assy.	B0800090	B		
311	Top Wear Plate	B0800100	B		
312	Rubber Plug	B0806800	B		
313	Rubber Plug	B0806820	B		
314	Rubber Plug	B0806810	B		
315	Bolt Set	---	B		315,315,317,318 Refer to Table 7.1

4.2 Breaker Assembly

Figures and descriptions represent standard configurations. Tables and figures are common to all serial numbers except where noted.

4.2 Breaker Assembly

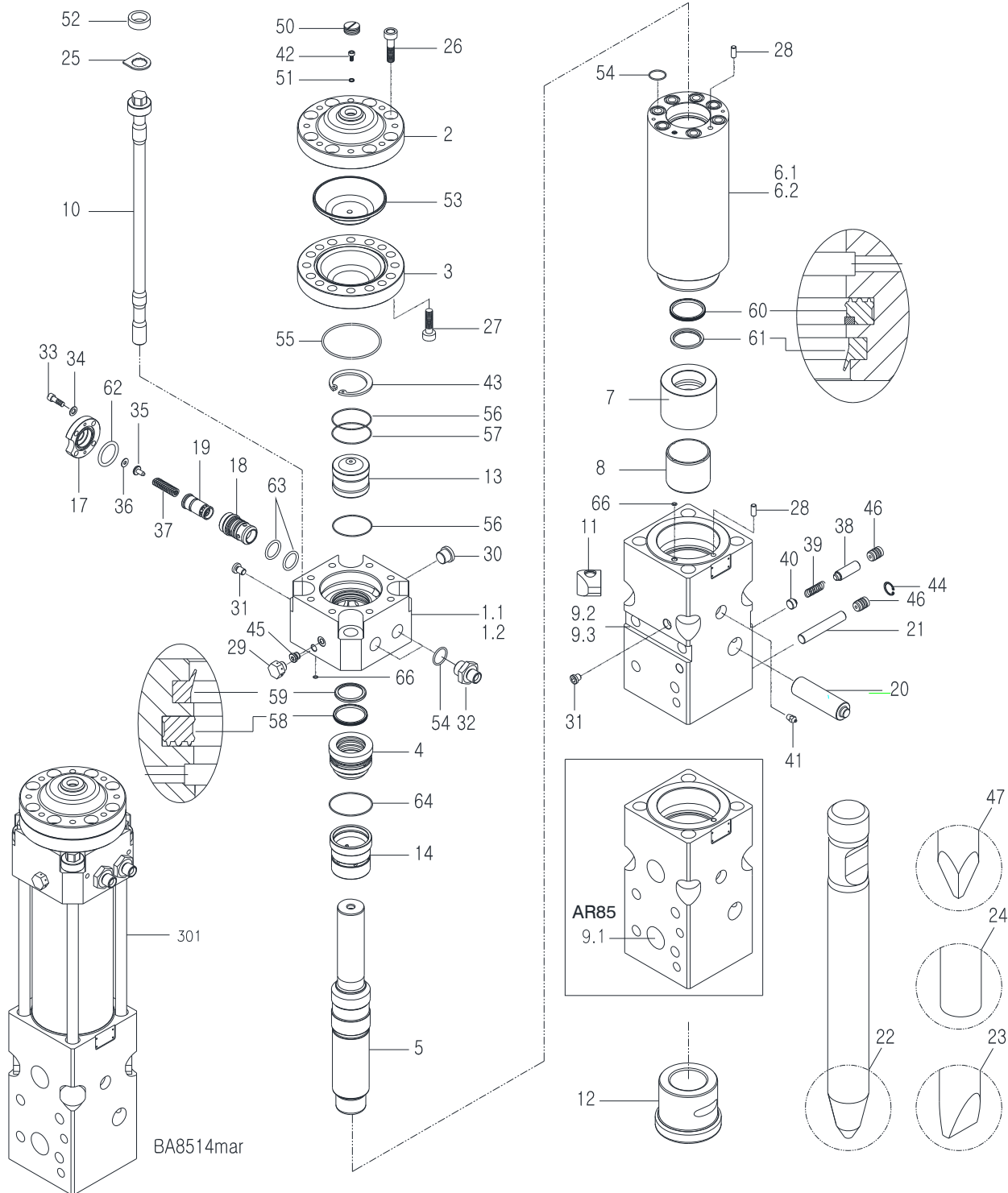


Fig. 4-4 Breaker Assembly - AR85, AR85B

4.2 Breaker Assembly

Figures and descriptions represent standard configurations. Tables and figures are common to all serial numbers except where noted.

Table 4.4 Breaker Assembly – AR85, AR85B

<u>Item</u>	<u>Description</u>	<u>Part No.</u>	<u>Model</u>	<u>Qty</u>	<u>Remarks / Specifications</u>
1.1	Valve Housing	103315	B ²⁾	1	²⁾ SN-01172&UP
1.2		B0806710			
2	Accumulator Cover	676213		1	Upper
3	Accumulator Cover	103319		1	Lower
4	Seal Housing	676231		1	
5	Piston	103318		1	
6.1	Cylinder	103316	B ²⁾	1	²⁾ SN-01172&UP
6.2		B0806720			
7	Thrust Ring	103320		1	
8	Tool Bushing, Upper	103321		1	
9.1	Front Head	103317	B ¹⁾	1	¹⁾ SN-01171&DOWN
9.2		572536			
9.3		B0806730			
10	Side Rod	676222		4	
11	Side Rod Nut	676237		4	
12	Tool Bushing, Lower	103322		1	
13	Bushing	676221		1	
14	Distributor	676232		1	
17	Regulator Cover	676230		1	
18	Regulator Guide	676226		1	
19	Regulator Spool	676227		1	
20	Tool Retainer Pin	103323		1	
21	Bushing Pin	103325		1	
22	Tool Selection	Varies		1	Items 22,23,24,47 Refer to Table 5.1
25	Lock plate, Side Rod	676223		4	
26	Socket Head Bolt	676219		8	M18
27	Socket Head Bolt	676218		8	M16
28	Guide Pin	676183		2	
29	Vent Plug	676215		1	
30	Threaded Plug	676216		1	
31	Threaded Plug	676159		2	
32	Adapter	667710		2	
33	Socket Head Bolt	940587		4	
34	Disc Lock Washer	571053		4	

4.2 Breaker Assembly

Figures and descriptions represent standard configurations. Tables and figures are common to all serial numbers except where noted.

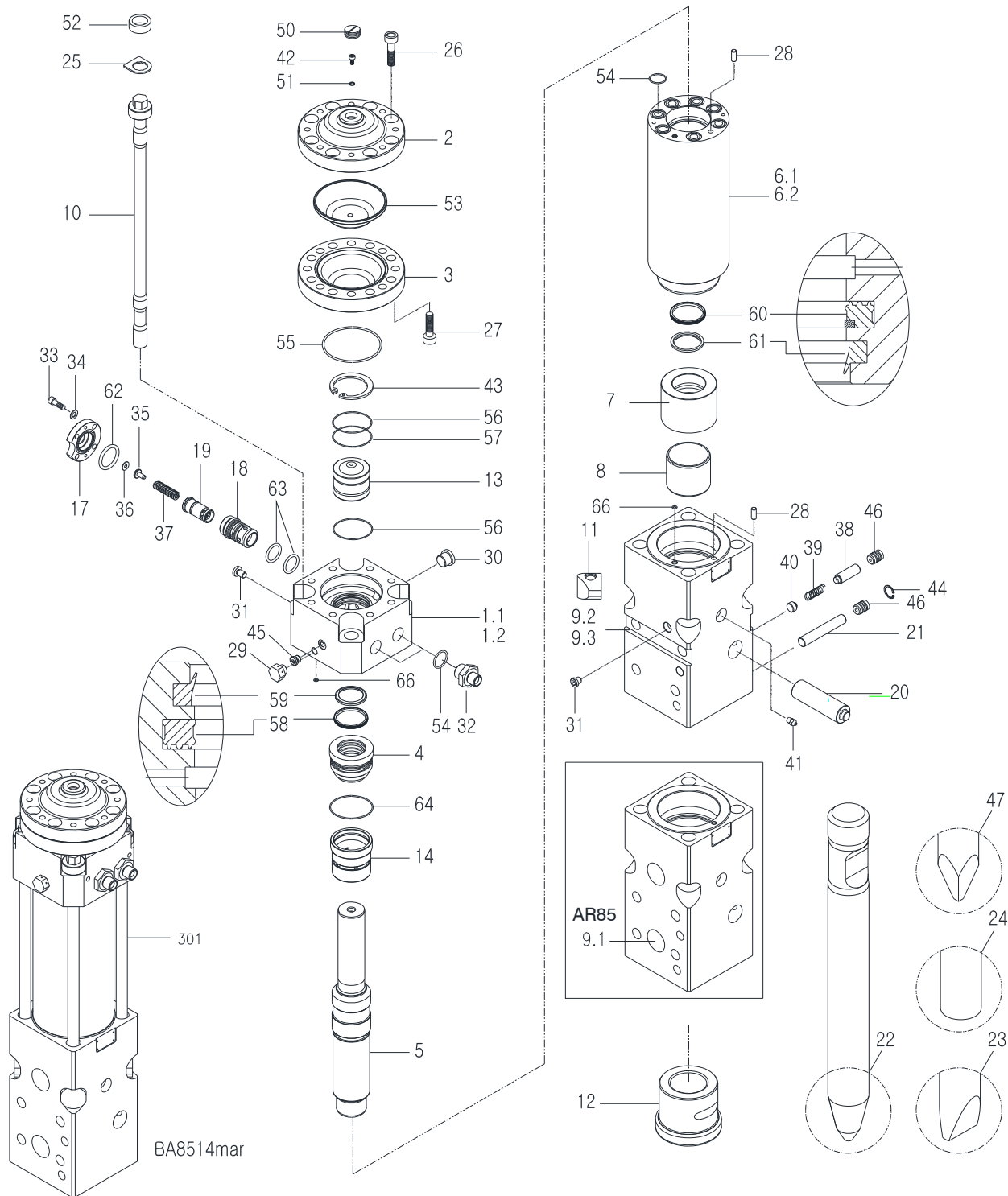


Fig. 4-4 Breaker Assembly - AR85, AR85B

4.2 Breaker Assembly

Figures and descriptions represent standard configurations. Tables and figures are common to all serial numbers except where noted.

Table 4.4 Breaker Assembly AR85, AR85B –[cont'd]

<u>Item</u>	<u>Description</u>	<u>Part No.</u>	<u>Model</u>	<u>Qty</u>	<u>Remarks / Specifications</u>
35	Regulator Spring Guide	676228		1	
36	Regulator Shim Plate	676229		1	
37	Regulator Spring	676225		1	
38	Plunger Pin	676193		1	
39	Plunger Spring	676242		1	
40	Plunger Pin Spring Guide	676195		1	
41	Lubrication Fitting	816675		1	
42	Gas Bolt	676161		1	
43	Snap Ring	676220		1	
44	Snap Ring	103034		1	
45	Threaded Plug	102241	B ²⁾	1	²⁾ SN-01172&UP
46	Rubber Plug	676243		2	
50	Protective Cap	676157		1	
51	Usit Ring	676201		1	
52	Rubber Ring	676224		4	
53	Membrane	103324		1	
54	O-Ring	676204		9	
55	O-Ring	101330		1	
56	O-Ring	676248		2	
57	Back-Up Ring	676250		1	
58	Seal, Upper	676252		1	
59	Wiper, Upper	676253		1	
60	Seal, Lower	676255		1	
61	Wiper, Lower	676256		1	
62	O-Ring	676251		1	
63	O-Ring	676206		2	
64	O-Ring	676257		1	
66	O-Ring	A0607130	B ²⁾	2	²⁾ SN-01172&UP

4.3 Hydraulic Connections

Figures and descriptions represent standard configurations. Tables and figures are common to all serial numbers except where noted.

4.3 Hydraulic Connections

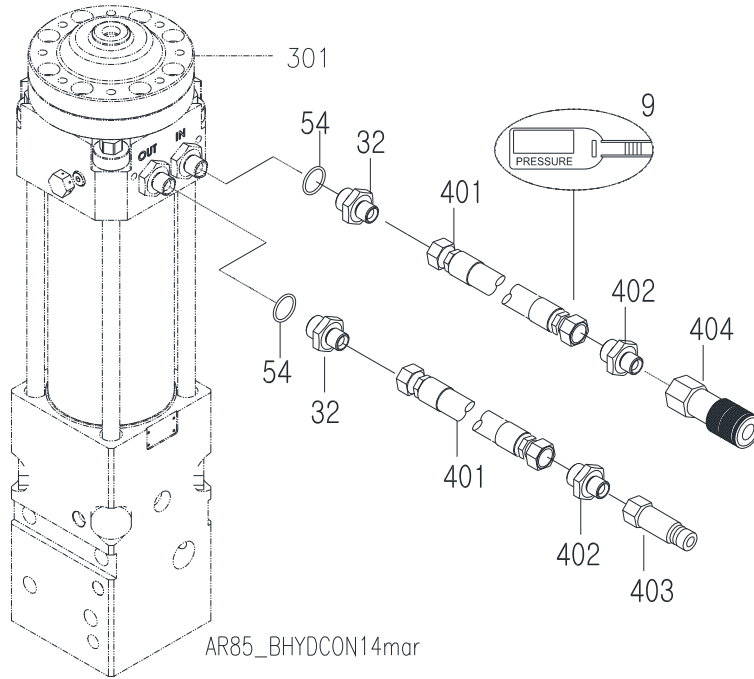


Fig 4-5 Hydraulic Connections

Table 4.5 Hydraulic Connections – AR85, AR85B

Item	Description	Part No.	Qty	Remarks / Specifications
9	Pressure ID Tag	818676	1	Located On Supply Hose [IN]
32	Adapter	667710	2	
54	O-ring	676204	2	
401	Hose Assembly	657642	2	
402	Adapter	798120	2	
403	Q.D. Plug	670008	1	
404	Q.D. Socket	670007	1	
405	Check Valve	670270	1	Not pictured. Note ¹
406	Adapter w/ Port	708726	1	Not pictured. Note ¹
407	Hex Plug	667566	2	Not pictured. Note ¹

1) Usage limited to early AR85. Its use is discontinued.

5.0 Tool Selection Guide – Standard & Specialty

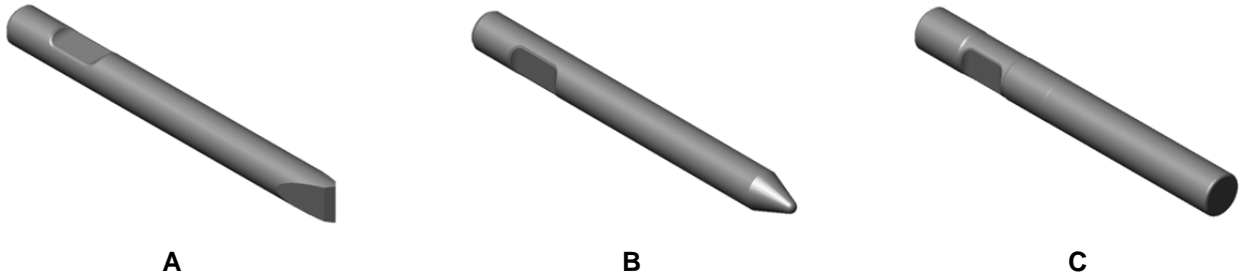
5.1 Standard Type Tools

The three most commonly used tool points for concrete and rock demolition are the Chisel, Conical and Blunt.

A. **Chisel** – Suitable applications include soft rock and general demolition of concrete. The tool penetrates into the material, forcing it to separate. The wedge is useful when cutting action is required, e.g. benching and trenching.

B. **Conical (Moi) Point** - Same applications as chisel. The conical tool also penetrates, but unlike the chisel, the rounded shape resists twisting that can cause burring in the tool's retainer pin area.

C. **Blunt Tool** – Designed for impact breaking. The blunt tool is effective in secondary breaking of oversize rock or boulder reduction.



*Fig. 5-1 Standard Tool Types A thru C.

5.2 Specialty Type Tools**

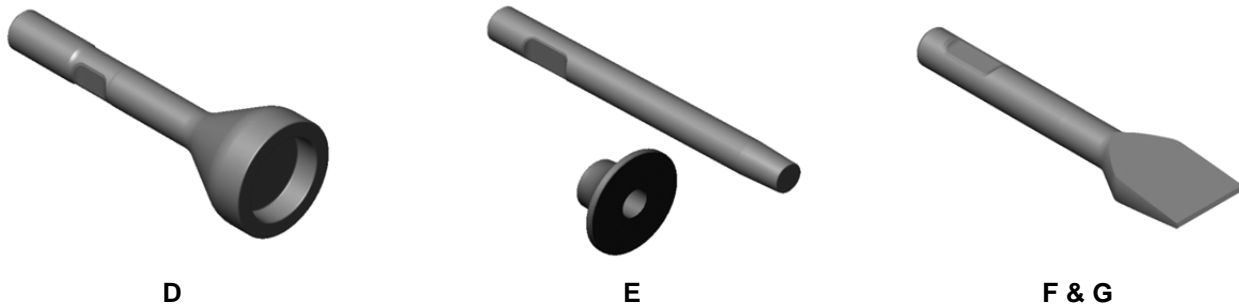
Specialty tools have a specific purpose or function designed into each tool. These tools can extend the versatility of a hammer, thus increasing productivity and eliminating the need for additional equipment.

D. **Post Driver** – For driving posts, pipes, etc.

E. **Tamper** – Designed to compact loose material.

F. **Frost Cutter** – For cutting into frozen ground.

G. **Asphalt Cutter** – Designed to cut seams in asphalt for removal. Useful when removing asphalt to dig a trench. Available in Cross-Cut and In-Line configurations.



*Fig 5-2 Specialty Tool Types D thru G.

*Shown are general illustrations. Actual tool design may vary.

**Not available for all models.

For availability of tool types not listed, contact Allied.

5.0 Tool Selection Guide – [cont'd]

Figures and descriptions represent standard configurations. Tables and figures are common to all serial numbers except where noted.

5.3 Tool Selection

Table 5.1 Standard Tools – AR85, AR85B

<u>Item</u>	<u>Description</u>	<u>Part No.</u>	<u>TD³⁾ x WL⁴⁾ in. [mm]</u>	<u>Weight-lbs. [kg]</u>
22-B	Conical Point	100658	3.35 [85] x 18 [457]	71 [32]
23-A ¹⁾	Chisel Cross Cut	100659	3.35 [85] x 18 [457]	71 [32]
---	Chisel In-Line	103356	3.35 [85] x 18 [457]	71 [32]
24-C	Blunt End	103357	3.35 [85] x 18 [457]	75 [34]
47---	Moil (Not Pictured)	--- ²⁾	---	---

- ¹⁾ **Standard tool supplied with Breaker**
- ²⁾ For availability of tool types not listed, contact Allied
- ³⁾ TD- Tool Diameter
- ⁴⁾ WL-Working Length

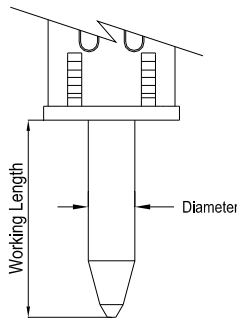


Fig. 5-3 Tool Diameter & Working Length

5.4 Lubricant for Bushings and Tool

5.4.1 Allied Chisel Paste

Wear costs money, sometimes lots of money. Without lubrication to prevent metal-to-metal contact, bushings and tools will quickly wear from friction related damage.

A key element in managing wear of the bushing and tool is through the regular use of a high-quality lubricant. Formulated as a 'specialty' lubricant, Allied Chisel Paste is ideally suited for use in applications requiring long-lasting protection against damage from heavy loaded, sliding motion and high heat.

Allied Chisel Paste performs exceptionally well in this application due to its 'unique blend' of liquid and dry film lubricants. Dry film lubricants, which include solids of molybdenum, graphite and copper, combine to form a highly effective layer that resists being squeezed out during periods of heavy loading (extreme pressure).

Grease labeled 'General / Multi-Purpose' will typically contain only modest amounts of solid lubricants or none at all. When the tool is loaded against the bushing, the liquid lubricant is squeezed out, leaving metal surfaces unprotected.

5.4.1 Ordering Information

Table 5.2 Chisel Paste

<u>Container</u>	<u>Packaging</u>	<u>Part No.</u>
14.5 oz. Cartridge*	Qty x 10	574430
14.5 oz. Cartridge*	Qty x 30	574431
35 lbs. Bucket	Qty x 1	676698
120 lbs. Drum	Qty x 1	679968

*Cartridge fits standard hand-type grease gun

6.0 Service Kits and Tools

6.1 Tune-up Kits

All breakers require regular maintenance and periodic replacement of wear parts. Follow the recommended service schedule to maintain reliable operation.

Tune-up kits can help restore breaker performance and are offered in a convenient all-in-one packaged kit. Each kit contains common wear parts that generally need replaced at the same time.

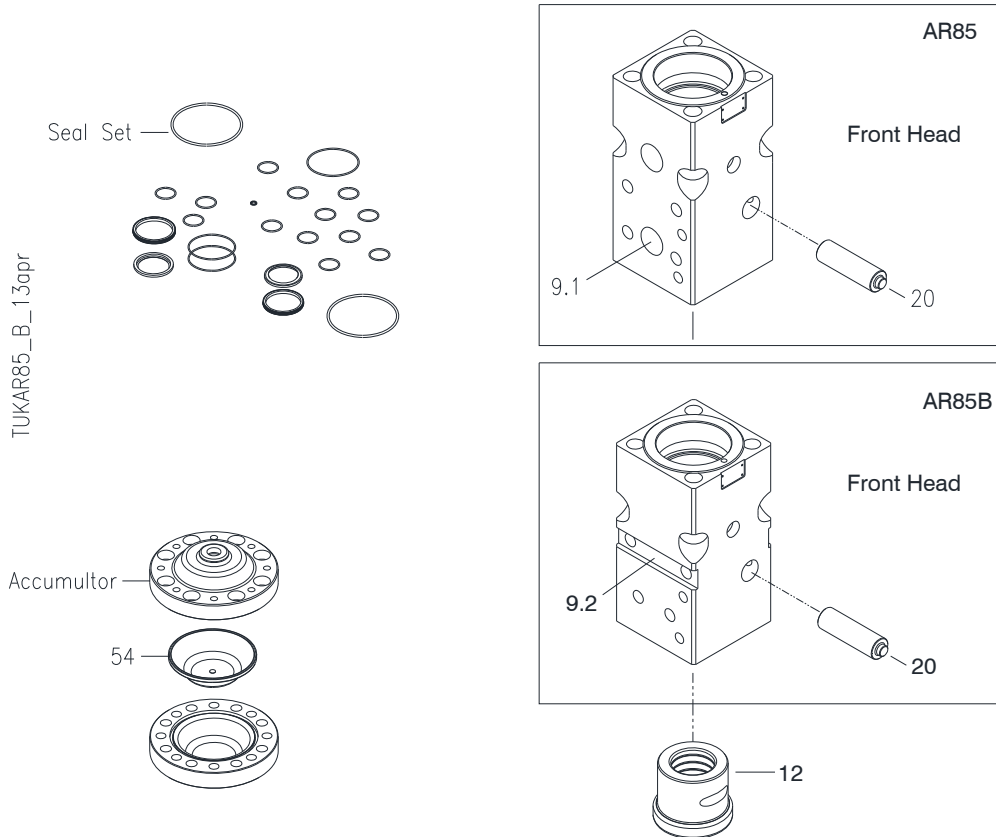


Fig. 6-1: Tune-Up Kit – Model AR85 & AR85B

Table 6.1 Tune-Up Kit – AR85, AR85B

Item	Description	Part No.	Qty	Remarks / Specifications
---	Tune-up Kit	103826	1-Kit	Kit includes all items listed in Table 6.1
---	Seal Set Complete	103314	1	Refer to Table 6.2
12	Lower Tool Bushing	103322	1	
20	Tool Retainer	103323	1	
54	Accumulator Membrane	676217	1	

Figures and descriptions represent standard configurations. Tables and figures are common to all serial numbers except where noted.

6.0 Service Kits and Tools – [cont'd]

Figures and descriptions represent standard configurations. Tables and figures are common to all serial numbers except where noted.

6.2 Seal Set - 103314

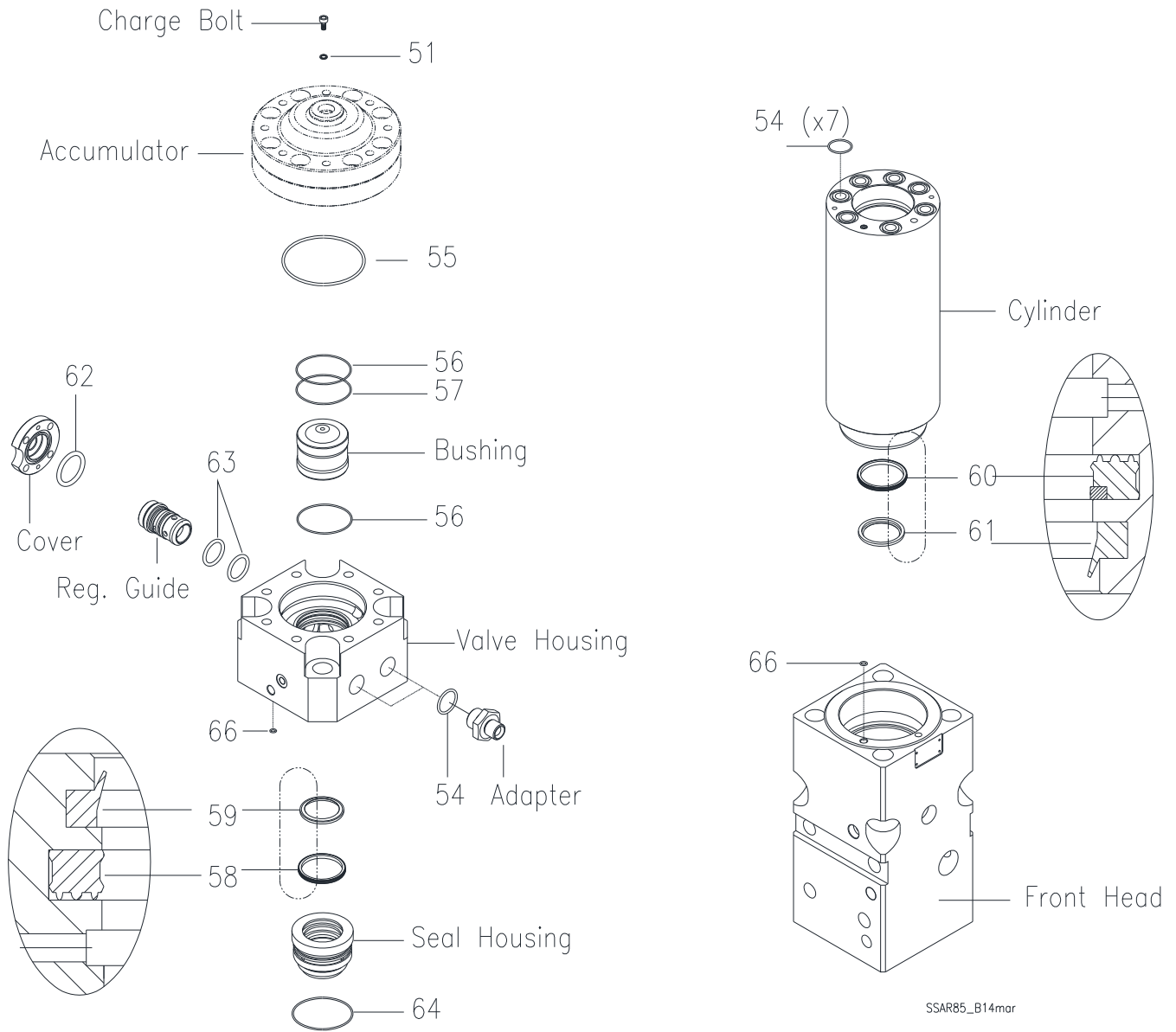


Fig. 6-2: Seal Positions – AR85 & AR85B

6.0 Service Kits and Tools – [cont'd]

Figures and descriptions represent standard configurations. Tables and figures are common to all serial numbers except where noted.

Table 6.2 Seal Set Complete – AR85 and AR85B

<u>Item</u>	<u>Description</u>	<u>Part No.</u>	<u>Model</u>	<u>Qty</u>	<u>Remarks / Specifications</u>
---	Seal Set	103314		1 Set	Set includes items listed
51	Usit Ring	676201		1	
54	O-Ring	676204		9	Discard if adapters [IN] & [OUT] are equipped with bonded seal
55	O-Ring	101330		1	
56	O-Ring	676248		2	
57	Back-Up Ring	676250		1	
58	Seal, Upper	676252		1	
59	Wiper, Upper	676253		1	
60	Seal, Lower	676255		1	
61	Wiper, Lower	676256		1	
62	O-Ring	676251		1	
63	O-Ring	676206		2	
64	O-Ring	676257		1	
66	O-Ring	A0607130	B ²⁾	2	²⁾ SN-01172&UP
---	Thread Lube 2 oz.	676927		1	Follow application instructions

 	Follow all instructions given in Repair Manual 101230
---	---

IMPORTANT
Contamination interferes with reliable operation and will shorten component life. Prevent dirt and debris from entering the hydraulic system. Always work in a clean area. Keep seals properly stored in their original, sealed package until ready for use.

IMPORTANT
Apply thread lube included in seal set to threads of side rods at assembly. <i>DO NOT apply Thread Lube to seals!</i>

6.0 Service Kits and Tools – [cont'd]

6.2 Accumulator N2 Gas Charge Equipment

The accumulator is a self-contained pressure vessel, designed to help the breaker operate efficiently and reliably. An elastic membrane (A) divides the inner chamber. The lower chamber receives, stores and discharges pressurized oil. The upper chamber is pressurized with nitrogen gas (N2).

Pressurizing (pre-charging with dry nitrogen gas) the accumulator is accomplished with the charging tool (Fig. 6-3). The table below lists the items included with the charging kit. The kit will service most accumulators found on the AR-series breakers. NOTE: The nitrogen bottle (E) gas is NOT included.

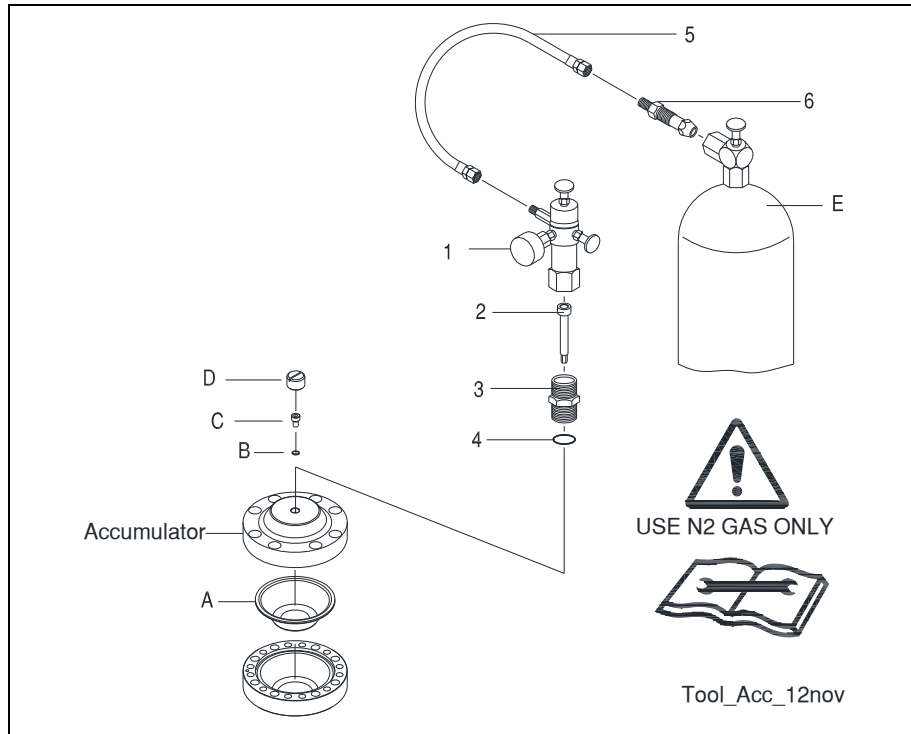




Fig. 6-3 Accumulator N2 Gas Charge Tool

Table 6.3 Accumulator N2 Gas Charge Kit

Item	Description	Part No.	Qty	Remarks / Specifications
---	N2 Gas Charge Kit	570071	1-Kit	Kit includes items 1,2,3,4,5,6
1	Charge Valve with Gauge	100527	1	Items 2-6 & storage case (not shown)
2	Socket Bolt	40601	1	
3	Adaptor	R101635	1	
4	O-ring	901135	1	
5	Hose	N/A	1	8 Ft. [2.5 M] Not Available Separately
6	Adapter for N2 Gas Bottle	N/A	1	Not Available Separately
E	Nitrogen Gas Bottle	N/A	---	Not Available from Allied (Source Locally)
A,B,C, D,E	Membrane, U-sit ring, Bolt, Cap, N2 Gas Bottle	---	---	A,B,C,D,E Shown only for reference and are not included in charge kit.

  For safe and proper use of this tool, read, understand and follow all instructions given in Safety, Operation and Maintenance Manual part number 576778.

7.0 Mounting Information

7.1 Housing Types and Mounting Brackets

The Breaker assembly is equipped with either housing plates (Fig. 7-1) or housing box (Fig. 7-2, item 402). Installation of a mounting bracket (sold separately) is required before the Breaker can be attached to a carrier. Allied offers an array of bolt-on mounting brackets to fit virtually any carrier, including those equipped with pin-grab or hook-type quick mounting couplers.

7.2 Connection Plate

The mounting bracket (Fig. 7-2, item 403) is bolted to the connection plate (Fig. 7-3) located at the upper end

of the housing plates/box. The dimensions of the connection plate, including thickness, spacing, quantity and diameter of the bolt holes, can be found in the Safety, Operation & Maintenance Manual.

In Table 7.1, the mounting “Family” designates a sizing system used by Allied to identify a given connection plate. Other Allied work tools, including the Ho-Pac[®], utilize these same mounting Families.

Figures and descriptions represent standard configurations. Tables and figures are common to all serial numbers except where noted.

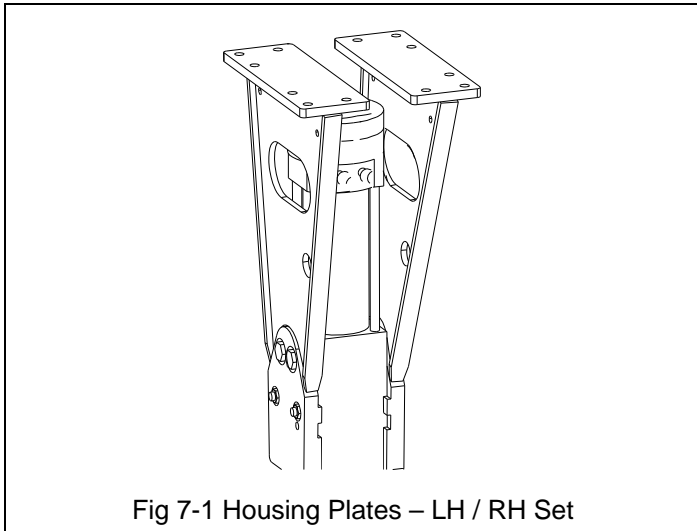


Fig 7-1 Housing Plates – LH / RH Set

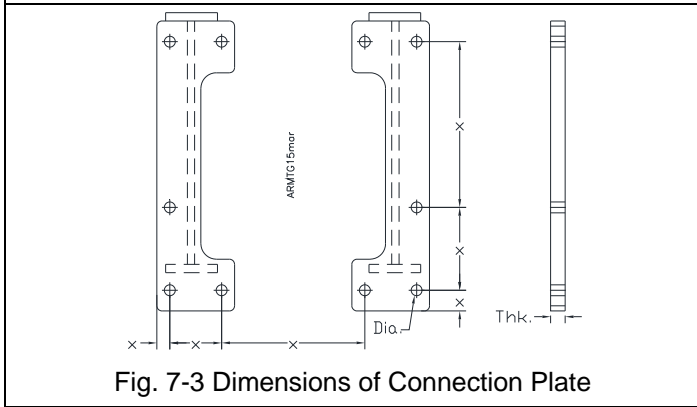


Fig. 7-3 Dimensions of Connection Plate

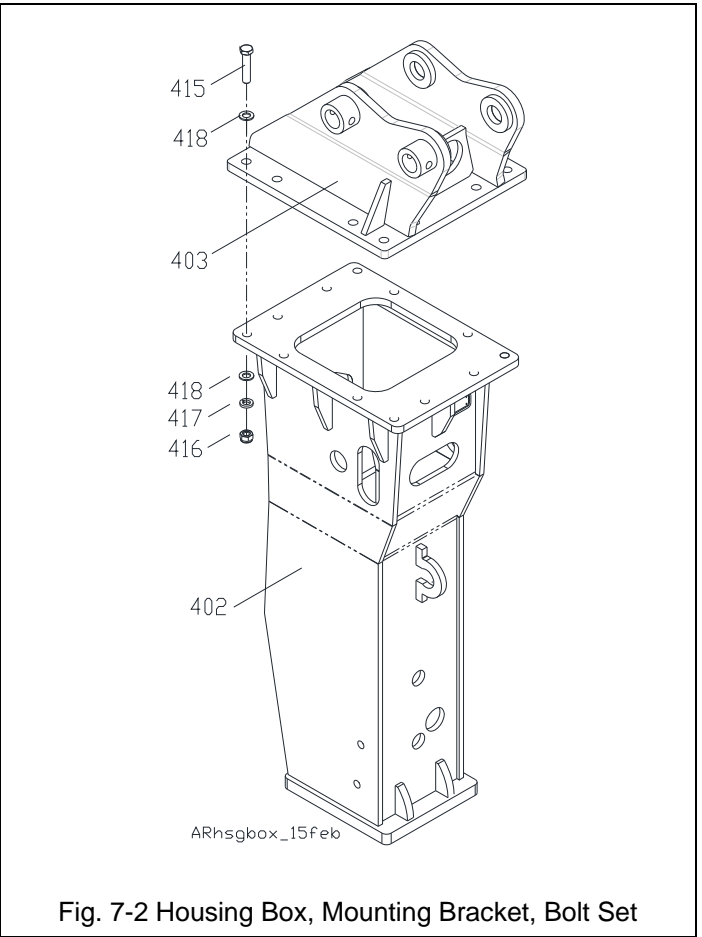




Fig. 7-2 Housing Box, Mounting Bracket, Bolt Set

Table 7.1 Mounting Family & Hardware (Qty)

Family	Breaker Model	Bolt	FL Washer	LK Washer	Nut
SR	AR85B, AR95B	572352 (10) 18M CL10.9	679422 (20) 18M	571027 (10) 18M	572353 (10) 18M
		Refer to the Safety, Operation and Maintenance manual for the proper tightening torque.			

8.0 How To Order Spare Parts

Your local Allied dealer requires complete information to better assist you with questions regarding parts, warranty, operation, maintenance, or repair. This information, Product Name, Model and Serial Number, should be noted in Section 2.3 of this manual.

Product Series / Model Hydraulic Impact Breaker
 Model AR
 Serial No. _____

Please fill out completely

Line	Description	Part Number	Quantity	Price
1				
2				
3				
4				
5				
6				
7				
8				
9				
10				

Contact information

Your Name _____ Company Name _____
 Phone _____ Account Number _____
 Fax _____ Purchase order _____
 Email _____ Shipping method _____

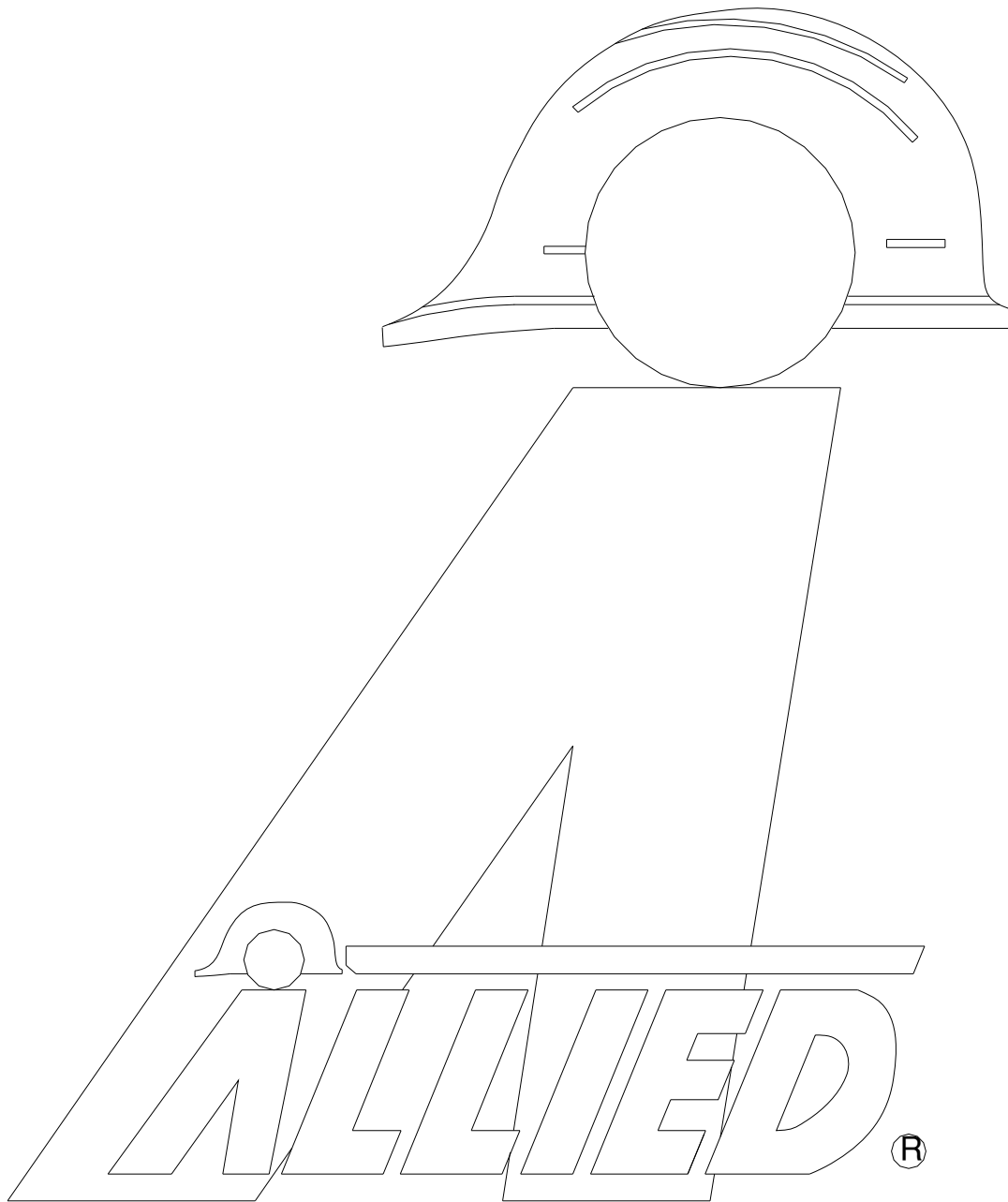
*See note below

Billing Address _____ Shipping Address _____

***Note: All backordered parts will be shipped when available via the same method as the original order unless initialed and checked below:**

Initials _____
 Ship complete order only
 Ship available parts and contact customer on disposition of backordered parts
 Other – specify below

NOTES



3900 Kelley Avenue, Cleveland, Ohio 44114
Tel: 216-431-2600 Fax: 216-431-2601
e-mail: Sales@AlliedCP.com
website: <http://www.AlliedCP.com>