

AR Series

Hydraulic Impact Breaker

Model
AR140B

**ALLIED**

Parts Manual - AR140B

Keep this manual in a convenient location so that it is easily accessible for future reference. Contact your Allied Dealer or the Allied Customer Service Department for replacement manuals. Inquiries regarding the content of this manual must include effective date shown on inside cover.



PM570978

Contact Information and Revision History

3900 Kelley Ave

Cleveland, Ohio 44114

Tel: 216-431-2600

E-mail: sales@alliedcp.com

Fax: 216-431-2601

Revision History for Document No. PM570978



Continuous improvement of our products is an Allied policy. The material in this publication, including figures, captions, descriptions, remarks and specifications, describe the product at the time of its printing, and may not reflect the product in the future. When changes become necessary, these will be noted in the table below. Specifications are based on published information at the time of publication. Allied Construction Products, LLC, reserves the right to change, edit, delete or modify the content of this document, including descriptions, illustrations and specifications without prior notification. For product or document updates go to www.alliedcp.com.

Table of Revision History for PM570978

<u>Effective Date</u>	<u>Page</u>	<u>Summary of Change</u>
2015, Aug		Table 4.3 Fig 4-4 revise item numbers 19 & 20.
2013, Dec	8	Revise Table 4.1. Item 218, part number change.
2012, Aug	8,10,19,21	Table 4.1 revise item 230. Table 4.2 revise item 4. Revise Fig.6-2, Table 6-2. Add views A,B,C,D,E.
2011, Nov	25	Revise Fig 8-2 add note refer to O&M Manual for bolt hole dimensions
2011, Nov	12,18,24	Revise Table 7.1 Hydraulic Connections - Removed items marked "Discontinued. Used w/ early SN's only." 571007, 053755 Adapter w/ Tapered Thread, 677997 Check Valve, 677828 Adapter w/ port, 667566 Hex Plug, 677811 Cap Nut. Revise seals. Discontinue use of guide ring. Reduce qty of 570772 from 8.
2008, Sep	14	Add illustration & table of parts for Tune-Up Kit
2008, Apr	11, 12, 13, 14	PN 570771 Revised description from Guide Seal to Guide Ring
2008, Feb	4	Revise hydraulic adapter configuration
2008, Feb 04	4	Correct PN 719151
2007, Oct	4 & 8	Revise adapter & flange port part numbers
2007, Aug 28	5 & 6	Revise housing assembly
2007, Aug 09		Revise Tune-Up Kit
2006, Sep	5, 6, 11-14	Revise housing plugs, lower bushing & o-ring
2006, Feb	6	Revise PN 570111
2005, Aug	4	Discontinue PN 677997
2005, Jun	6, 10, 13	P/N 571054, 571055, 571056, 902766, & note to Figure 4.5 Added
2005, May	11-14	Revise Parts & Seal Kit
2005, Apr		Original Issue of 570978

Table of Contents

<u>Section</u>	<u>Page</u>
Contact Information.....	i
Document Revisions.....	i
Table of Contents.....	ii
1.0 Introduction & Scope.....	1
1.1 About This Manual.....	
1.2 How to Order Replacement Manuals.....	1
1.4 Related Publications.....	1
2.0 Equipment Identification.....	3
2.1 Serial Number Location.....	3
2.2 Equipment Identification Tag.....	3
2.3 Owner's Record of the Equipment.....	3
3.0 Safety & Information Labels.....	4
3.1 Ordering Information for Labels.....	6
4.0 Identification of Spare Parts.....	7
4.1 Housing Box and Components.....	7
4.2 Breaker Assembly.....	9
4.3 Hydraulic Connections.....	15
5.0 Tool Selection Guide.....	16
5.1 Standard Tools.....	16
5.1.2 Specialty Tools.....	16
5.2 Chisel Paste.....	17
6.0 Service Kits and Tools.....	18
6.1 Tune-Up Kit.....	18
6.2 Seal Set.....	19
6.3 Accumulator N2 Gas Charge Tool Kit...	22
7.0 Mounting to the Carrier.....	23
7.1 Mounting Brackets.....	23
8.0 How To Order Spare Parts.....	24

<u>List of Figures</u>	<u>Page</u>
2-1 Serial Number Location.....	3
2-2 Equipment Identification Tag.....	3
3-1 thru 3-12 Safety, Identification & Information Labels.....	4
3-13 Placement of Labels on Equipment.....	6
4-1 Housing & Buffer Components.....	7
4-2 Breaker Assembly.....	9
4-3 Hose Routing From Breaker to Carrier	15
4-4 Hydraulic Connections.....	15
5-1 Tool Selection – Standard & Specialty...	16
5-2 Working Length of Tool.....	16
6-1 Tune-up Kit.....	18
6-2 Seal Set – Seal Positions Identified.....	19
6-3 Breather / Vent Position of Seals.....	21
6-4 Housing Position of Seals.....	21
6-5 Cylinder Position of Seals.....	21
6-6 Regulator Guide Position of Seals.....	21
6-7 N2 Gas Charge Equipment.....	22
7-1 Mounting Bracket Connection.....	23
7-2 Connection Plate.....	23

<u>List of Tables</u>	<u>Page</u>
1.1 About This Manual.....	1
3.1 Safety & Information Label – Description.....	4
3.2 Safety & Information Labels - Ordering.....	6
4.1 Housing Box and Components.....	8
4.2 Breaker Assembly.....	10
4.3 Hydraulic Connections.....	15
5.1 Tools – Standard Type.....	17
4.5.2 Tool Lubrication - Chisel Paste.....	17
6.1 Tune-Up Kit.....	18
6.2 Seal Kit.....	20
6.3 Gas N2 Charge Tool Kit.....	21
7.1 Mounting Bracket & Hardware.....	23

1.0 Introduction and Scope

1.1 About This Manual

Table 1.1 About This Manual



Document ID. No.	PM570978
Type	Spare Parts
Current Status	See Inside Cover
Product Name:	Mounted Hydraulic Impact Breaker
Series	AR
Applicable Model[s]:	AR140B
Years of Manufacture:	2005 & above
*Inquiries regarding this manual must include effective date shown on inside cover	

The material presented in this manual has been prepared in support of the product named in Table 1.1. It's intended solely for use with expressed model(s) and may be unsuitable with models unnamed.

The publication identified in Table 1.1 was created solely for information purposes and should not be considered all-inclusive. If further information is required, contact your local Allied dealer or the Allied Customer Service Department.

Parts Manuals do not include safety precautions or operating procedures. Figures depict views that are intended for parts identification and not for purposes of repair or service of the product. Material presented in this manual, including tables, figures, descriptions and captions, may show equipment that is optional.

How to use this Manual:

The Allied work tool consists of separate components and partial assemblies. Components are identified with the aid of figures, captions, item key, part name and quantity. If needed, 'remarks' and 'specifications' will further clarify the part's description or denote assignment with select unit(s) by serial number.

An order form is provided at the back of this manual. Prior to ordering parts, confirm that the information recorded on the equipment's identification label corresponds with Table 1.1. For the location of this label, refer to Section 2.0 of this manual.

The content of this document has been reviewed for accuracy. Allied Construction Products, LLC has endeavored to deliver the highest degree of accuracy and every effort has made to provide information as complete as possible. However, continuous improvement of our products is an Allied policy. The material in this publication, including figures, captions, descriptions, remarks and specifications, describe the product at the time of its printing, and may not reflect the product in the future. A table of revision history for this document is found on the inside cover.

1.2 How To Order Replacement Publications

This manual is an integral part of this product. Keep it in a convenient location so that it is easily accessible for future reference.

Replacement manuals can be ordered by contacting your Allied dealer service center. These manuals may also be viewed and downloaded at: www.alliedcp.com

1.3 Related Publications

Allied Construction Products, LLC offers the following publications for the product identified in Table 1.1.

1.3.1 Safety, Operation & Maintenance Manual

SOM576701 for AR-Series AR110C – AR140B

The Safety, Operation and Maintenance Manual has been prepared to assist the operator and maintenance personnel with the information necessary for the safe and proper use of the Allied work tool.

Content includes:

- Safety Information
- Equipment Serial Number and Model Identification
- Technical Data (Weight & dimensions)
- Basic Guidelines for Installation and Set-up
- Pre-Operation Inspection
- How to Operate the Allied Work Tool
- Maintenance Schedule
- N2 Gas Charging Instructions
- Tool and Guide Bushing – Lubrication, Inspection, Wear Limits and Replacement
- Troubleshooting
- Removal From Carrier, Transporting, Lifting & Storage

1.0 Introduction and Scope – [cont'd]

1.3 Related Publications – cont'd

1.3.2 Repair Manual - 572591

The Repair Manual has been prepared to assist the Service Technician with the information necessary for the disassembly & reassembly of the Breaker. Content includes:

- Safety Information
- Disassembly & Reassembly
- Bolt Torque Specifications
- Wear Limits of Parts
- Accumulator N2 Gas Charging Instructions
- Bushing Replacement

1.3.3 AEM Safety Manual for Hydraulic Breakers

The Association of Equipment Manufacturers offers a safety manual designed for operators and maintenance personnel of hydraulic mounted breakers. The manual is available in Spanish, French and English. It is published in an illustrated format of sensible do's and don'ts, featuring typical daily situations on the job site. Content includes safety tips concerning the workplace and equipment, start up and shut down guidelines and special operating and maintenance precautions.

This publication is available by contacting:

Association of Equipment Manufacturers
Toll free 1-866-AEM-0442
E-mail: aem@aem.org
Website: www.aem.org

Ask for FORM CMHB-1004, Hydraulic Mounted Breakers.

This publication is also available through Allied under part number 953076 (English). To order a copy, contact the Allied Customer Service Department.

2.0 Equipment Identification

2.1 Serial Number Location

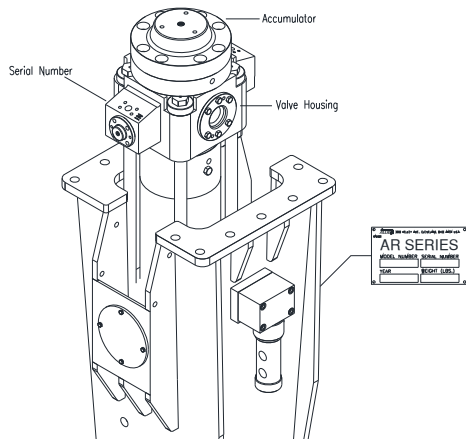


Fig 2-1 Equipment Identification

Refer to Figure 2-1. The Serial Number assigned to this equipment can be found in the following locations:

1. Stamped on the Equipment Identification Tag
2. Stamped on the valve housing [IN] port side.

2.2 Equipment Identification Tag

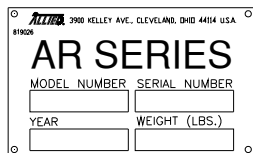


Fig 2-2 Equipment Identification Tag

The Equipment Identification Tag is affixed to the housing. It provides the following information:

- Allied Company Logo
- Street Address, City, State - USA
- Product name
- Model number
- Serial number
- Year of manufacture
- Weight

Confirm that the information displayed on the Tag corresponds with the information provided in Section 1, Table 1.1.

2.3 Owner's Record of the Equipment

Your local Allied dealer requires complete information about the equipment to better assist you with questions regarding parts, warranty, operation, maintenance, or repair.

- Copy the Model and Serial Number from the Equipment Identification Tag to the space provided below.
- Indicate the date in which the Allied equipment was placed into service.
- Fill out the Warranty Registration form and return to Allied Construction Products, LLC.

"AR" Model AR140B

Part Number: 570539

Serial Number: _____

In Service Date: _____



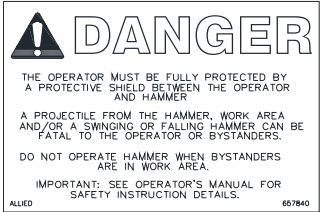
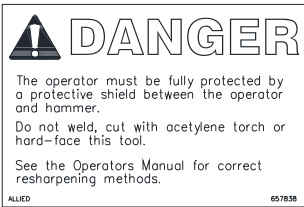



Registration Date _____

3.0 Safety and Information Labels [cont'd]

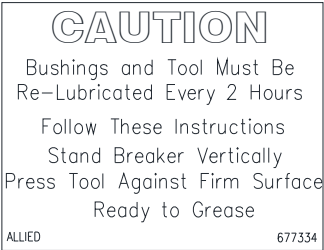
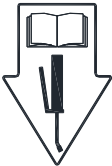
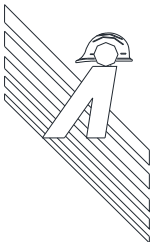

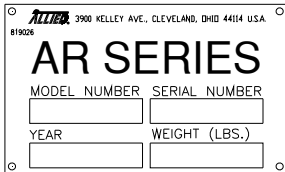
3.1 Label Description and Location On Equipment

Labels affixed to the Allied equipment communicate important information. Safety labels alert personnel to potential hazards while other labels provide product identification and instructions important to operation and service.

Keep labels clean so that words and illustrations are legible. Replace damaged or missing labels before operating this equipment. Use the information in Table 3.1 and Figure L-15 for replacement orders and for locating the position of each label on the equipment.

Label	Figure	Description
L1		Read The Manual - Safety Alert Symbol with pictogram of open book. Gives notice of the importance of reading the manual(s) for information and/or instructions.
L2		Keep Clear - Pictogram displays arrow distancing worker safely from recognized hazard which is represented by the box. Breakers, or any other work tool, pose risk of injury to workers if they are not kept at a safe distance. Never operate the work tool with workers inside the work zone.
L3		Flying Debris Hazard – Alerts personnel to the hazard of fragments becoming projectiles. A protective guard to shield the operator must be installed before operation of the breaker. Personnel are directed to the Operator's Manual for safety instructions. NOTE: A smaller sized version of this decal is to be displayed in a conspicuous location inside the operator's cab.
L4		Personal Protection Equipment / Tool Re-sharpening – Alerts personnel to provide protective shielding between the operator and breaker. It also warns against welding, cutting, or hard-facing the tool. Personnel are directed to the Operator's Manual for approved re-sharpening methods.
L5		Pressurized Nitrogen Accumulator – Alerts personnel to the accumulator, warning of nitrogen gas under pressure. Directs personnel to the Operation and Maintenance Manual for service instructions.
L6		Lift Point – Pictogram of hook identifies approved lift points.
L7		OIL SUPPLY LINE "PRESSURE" I.D. TAG – A red colored cable tie marked "PRESSURE LINE" is attached to the supply hose for ease of identification between hoses.

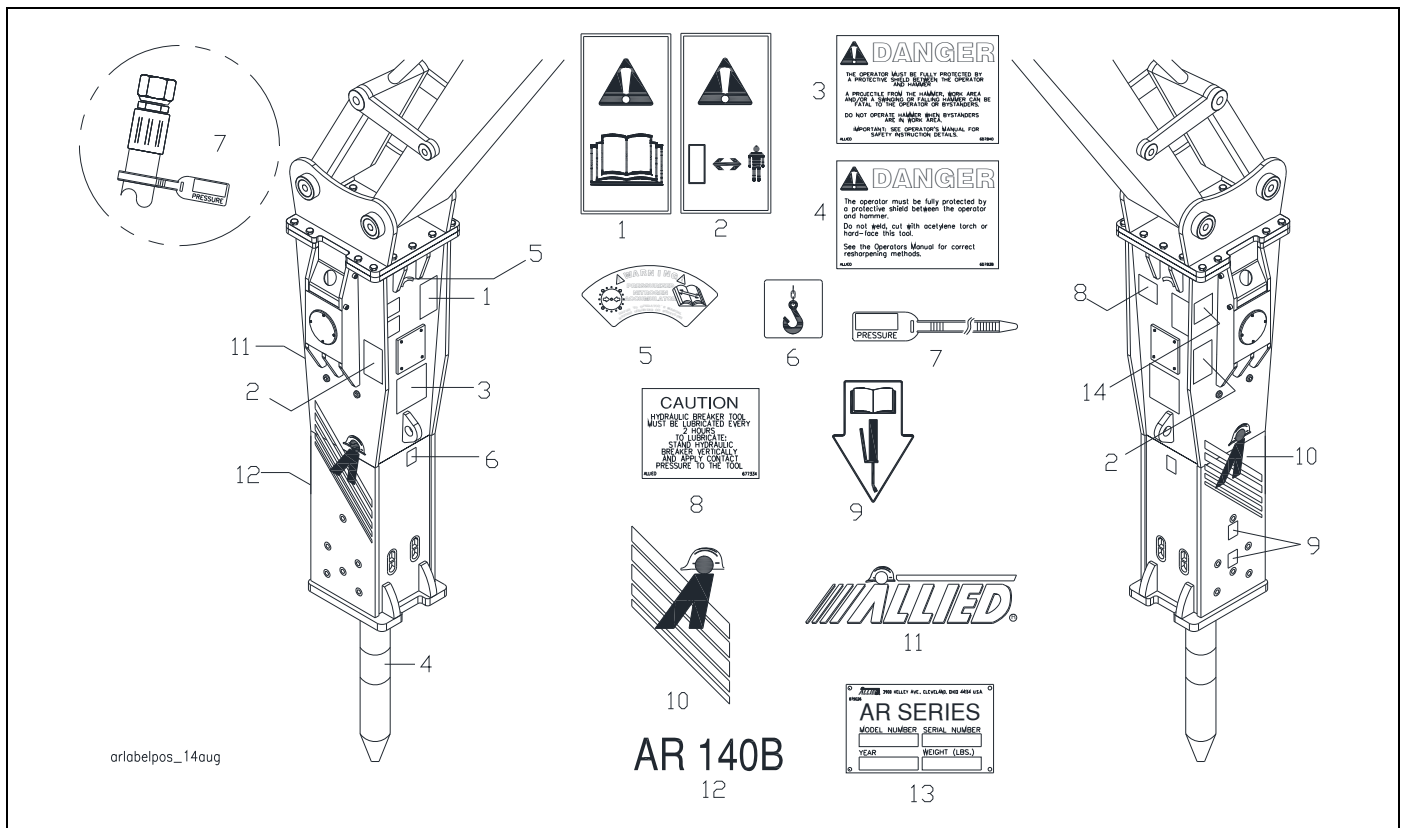
3.0 Safety, Information & Identification Labels

<u>Label</u>	<u>Figure</u>	<u>Description</u>
L8		LUBRICATION – Decal provides re-lubrication frequency. Risk of equipment damage through unapproved methods. Strict attention to all procedures must be followed. Stand breaker upright with contact pressure applied at tool. OK to lube.
L9		Lubrication Point – Pictogram of instruction manual and grease gun is used to identify lubrication points. Read the manual(s) for application instructions, grease type and re-lubrication schedule.
L10		Allied “A” with Hard Hat and Background Stripes
L11		ALLIED COMPANY LOGO – This decal is the Allied brand identifier and is a registered trademark of Allied Construction Products, LLC.
L12	AR140B	MODEL – Decal identifies the series and specific model.
L13		ID TAG - Contains identifying information about the equipment, including: Manufacturer's name, address, product name, model number, serial number, year of manufacture, and weight.

33.0 Safety and Information Labels [cont'd]

Table 3.1 Label Set

Item	Description	Part No.	Qty	Remarks / Specifications
---	Label Set – AR140B	571006	1 Set	Set includes 1-12
1	Decal – Read Instructions	676984	1	
2	Decal – Stay Clear	657841	2	
3.1	Decal – Danger (Small)	657839	1	Display in conspicuous location inside operator's cab
3.2	Decal – Danger (Large)	657840	1	(Large)
4	Decal – Tool Sharpening	657838	1	
5	Decal – Warning Pressurized Accumulator	102756	1	
6	Decal – Lift Point	676982	1	
7	Pressure ID Tag	818676	1	Attached to hose [IN]
8	Decal – Lube w/ Tool In	677334	1	
9	Lubrication Points	A101725	2	
10	Decal – Allied “A” with Hard Hat / Stripes	576283	2	
11	Decal – Allied	576288	1	
12	Decal – Model AR140B	571005	1	
13	Equipment ID Plate	819026	1	Item 14 is not included in Set


Fig. 3-15 Placement of Labels on Equipment

4.0 Parts Information

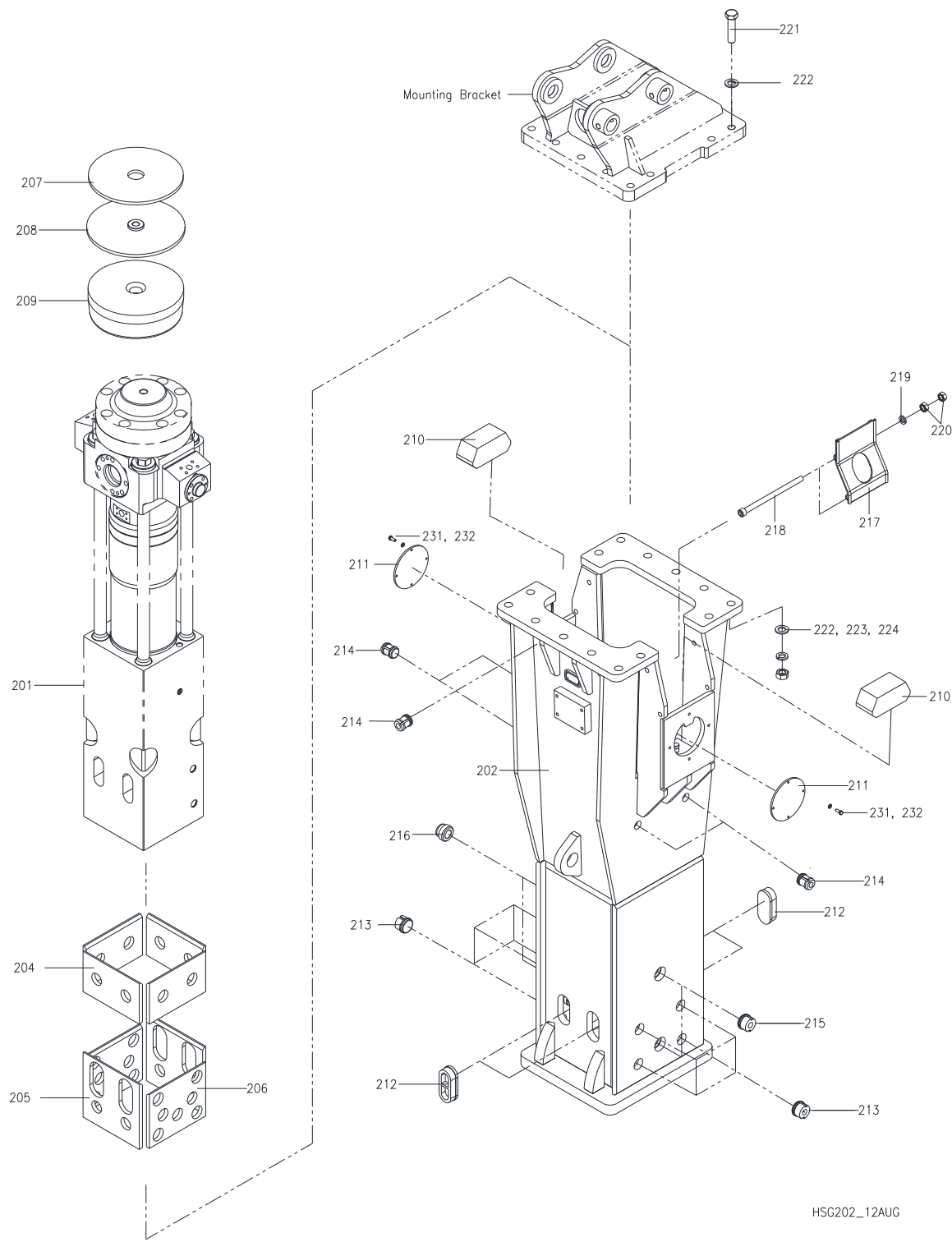


Fig. 4-1 Housing Box & Buffer Components

4.0 Parts Information [cont'd]**Table 4.1 Housing Box & Buffer Components**

<u>Item</u>	<u>Description</u>	<u>Part N^o</u>	<u>QTY</u>	<u>Remarks / Specifications</u>
---	AR140B Breaker w/ Housing	570539	---	Standard Version. W/O Mounting Bracket
201	Breaker Assembly	---	---	w/o Housing
202	Housing Box	570985	1	Standard LR8 Version
203	Mounting Bracket	Varies	---	Not included. Order Separately. Section 8
204	Wear Plate,	570992	4	Upper
205	Wear Plate,	570991	2	Front-Lower
206	Wear Plate,	570993	2	Side-Lower
207	Wear Plate,	101034	1	Top
208	Damper,	101516	1	Top Plate
209	Buffer	570989	1	Top
210	Buffer	101517	2	Side
211	Cover Plate	573165	2	
212	Rubber Plug	570996	4	
213	Rubber Plug	570997	8	
214	Rubber Plug	570998	4	
215	Wear Pin	572389	2	
216	Rubber Plug	B3200050	2	
217	Port Cover	570994	2	
218.1	SH Bolt	571002	4	M14xL280mm w /hole for cotter pin item 220
218.2		576945		M14xL280mm – use double nut
219.1	HC Split Washer	678476	4	Discontinued. Superseded by 575257
219.2	FL Washer	575257		
220.1	Cotter Pin	571008	4	Used only with bolt 571002
220.2	Nut	607264	8	Qty 4 when used w/ 576945
221	Mounting Hardware	---	---	221,222,223 Refer to Table 8.1
230	Rubber Plug	575360	2	w/ access to grease nipple
231	HH Bolt	798062	8	M10
232	LK Washer	678458	8	M10



Refer to the instructions given in Repair Manual 572591 for proper installation of parts.

4.0 Parts Information [cont'd]

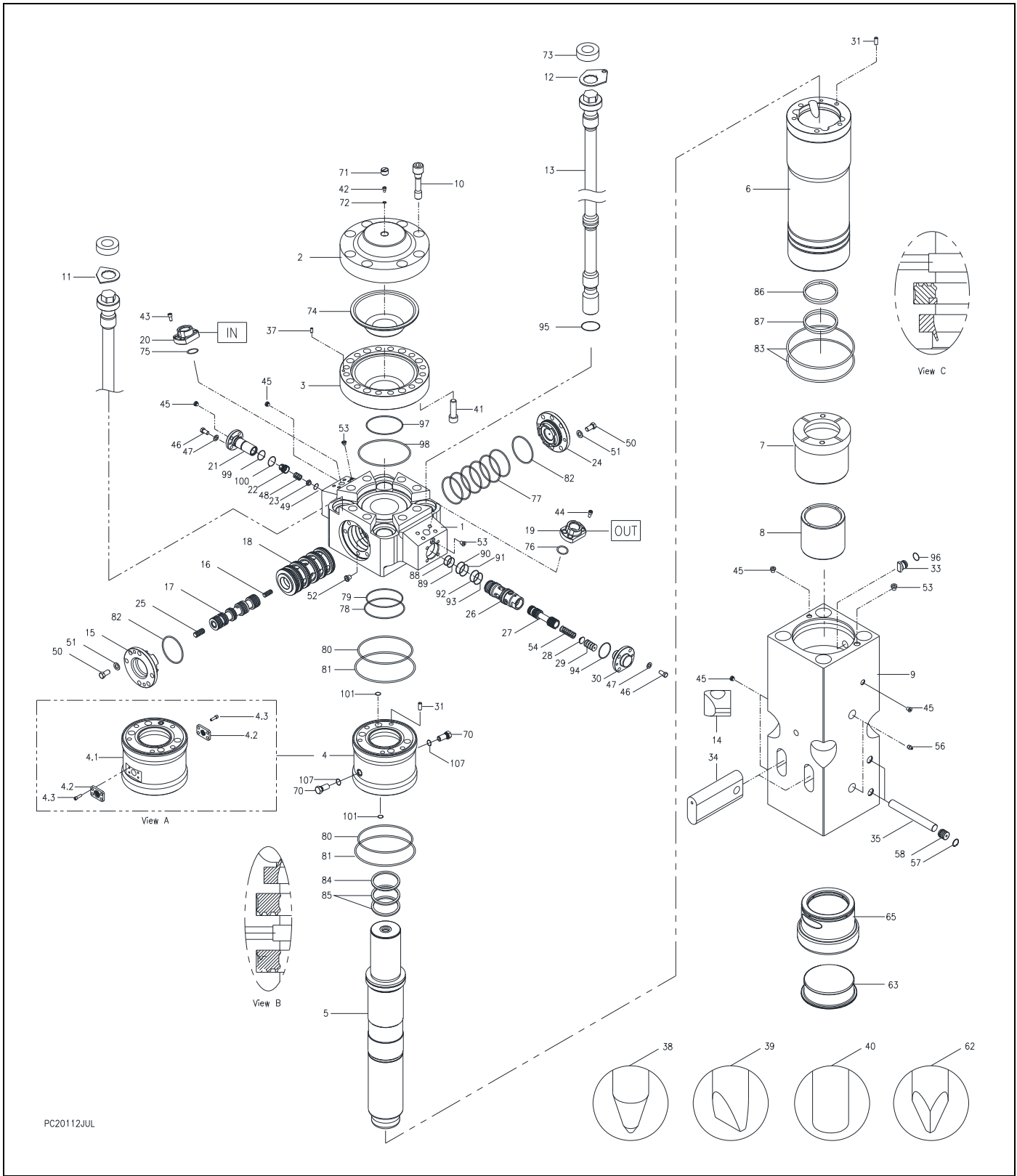


Fig. 4-2 Breaker Assembly

4.0 Parts Information [cont'd]**Table 4.2 Valve Housing & Components**

<u>Item</u>	<u>Description</u>	<u>Part N^o</u>	<u>QTY</u>	<u>Remarks / Specifications</u>
1	Valve Housing	570983	1	
2	Accumulator Cover	570774	1	
3	Accumulator Bottom	570775	1	
4	Seal Housing		1	Later Design – Thread Type Vent
4.1	Seal Housing	570776	1	View A – Early Design 4-Bolt Breather Cover
4.2	Breather Cover	102549	2	View A – Early Design 4-Bolt Flg Type
4.3	SH Bolt	940587	8	View A – Use w/ Early Design
5	Piston	570777	1	
6	Cylinder	570778	1	
7	Thrust Ring	570779	1	
8	Upper Bushing	570780	1	
9	Front Head	570971	1	
10	SH Bolt	570972	8	Accum Cover
11	Lock Plate	101586	3	
12	Lock Plate	570988	1	w/ hole as shown in Fig. 4-2
13	Side Rod	570973	4	
14	Nut, Side Rod	570974	4	
15	Control Valve Cover	102075	1	
16	Spool, Rear	101863	1	
17	Main Spool	102012	1	
18	Sleeve	102069	1	
19.1	Flange [OUT]	---	1	Discontinue use of tapered thread Flange
19.2		572704		Straight thread size 20
20.1	Flange [IN]	---	1	Discontinue use of tapered thread Flange
20.2		572705		Straight thread size 16
21	Check Valve Housing	102108	1	
22	Check Valve Spool	102109	1	
23	Check Valve Guide	102204	1	
24	Control Valve Cover	102101	1	
25	Spool, Front	101862	1	
26	Regulator Guide	101844	1	
27	Regulator Spool	101845	1	
28	Spring Guide	A101846	1	
29	Shim	101854	1	

4.0 Parts Information [cont'd]

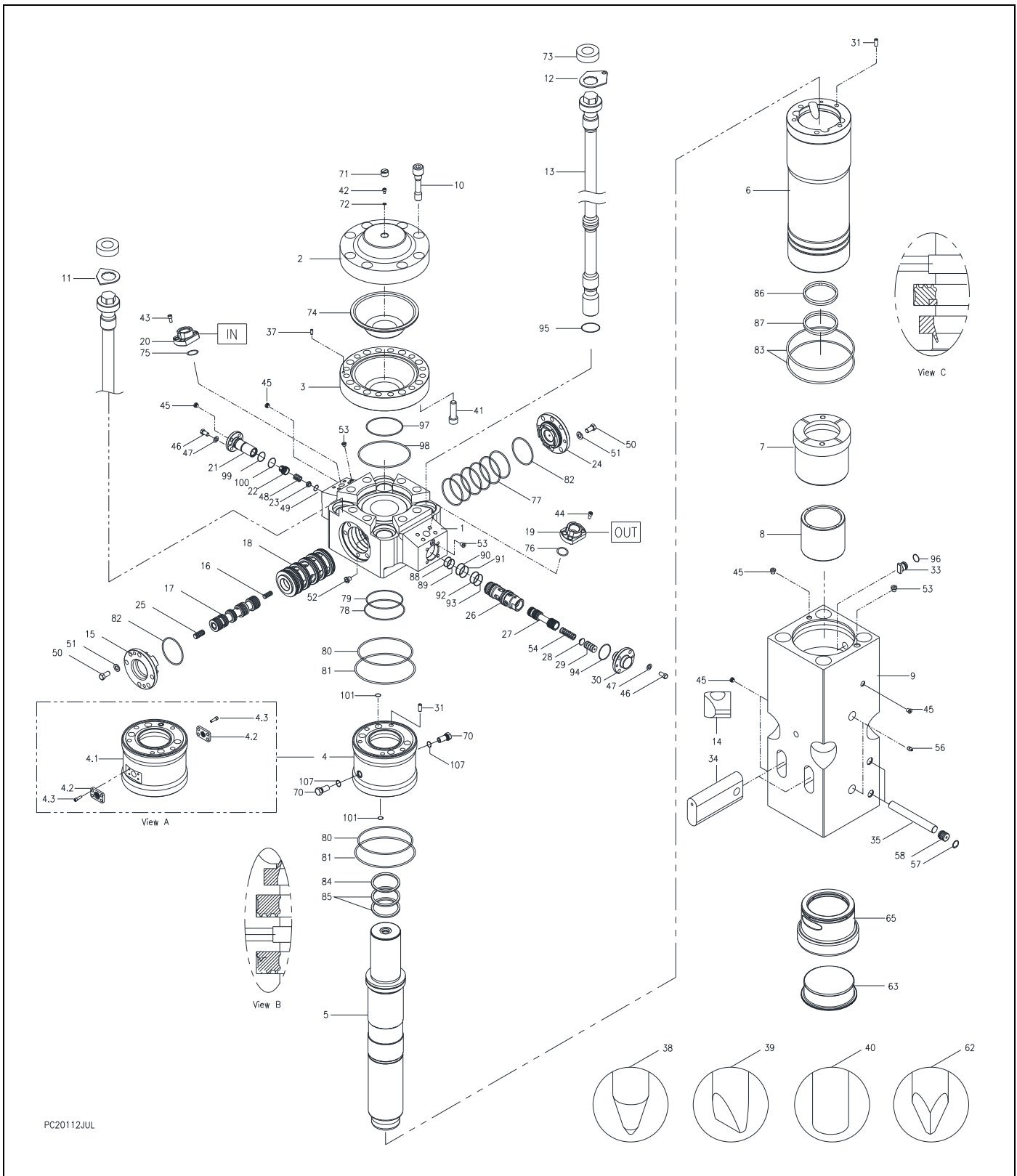


Fig. 4-2 Breaker Assembly

4.0 Parts Information [cont'd]**Table 4.2 Breaker Assembly –cont'd**

<u>Item</u>	<u>Description</u>	<u>Part N^o</u>	<u>QTY</u>	<u>Remarks / Specifications</u>
30	Regulator Cover	101855	1	
31	Guide Pin	102545	2	
32	Not Available	---	---	
33	Wedge	A102558	1	
34	Tool Retainer Bar	570976	2	
35	Retainer Pin	A101787	2	
37	Guide Pin	676183	1	
38	Tool Selection	Varies	---	38,39,40,62 Refer to Table 5.1
41	SH Bolt	570980	12	M22 Accum Bottom
42	Gas Bolt	676161	1	
43	Socket Head Bolt	90564	4	
44	Socket Head Bolt	103002	4	
45	Hex Socket Plug	676159	5	
46	Regulator Cover Bolt	900023	8	
47	Disc Spring	571054	8	
48	Check Valve Spring	102212	1	
49	Lock Ring	102217	1	
50	Sleeve Cover Bolt	902766	12	
51	Lock Washer	571055	12	
52	Hex Socket Plug	676216	1	
53	Hex Socket Plug	102241	2	
54	Regulator Spring	101856	1	
55	Not Available	---	---	
56	Grease Nipple	816675	2	
57	Snap Ring	570072	2	
58	Rubber Plug	102412	2	
59	Flange Plug	676159	3	
60	Flange Plug	102241	1	
63	Not Used	---	---	
65	Lower Bushing	570977	1	
---	---	---	---	66,67,68,69 Not Used
70	Air Vent Plug	B2006870	2	
71	Accumulator Cap	102262	1	

4.0 Parts Information [cont'd]

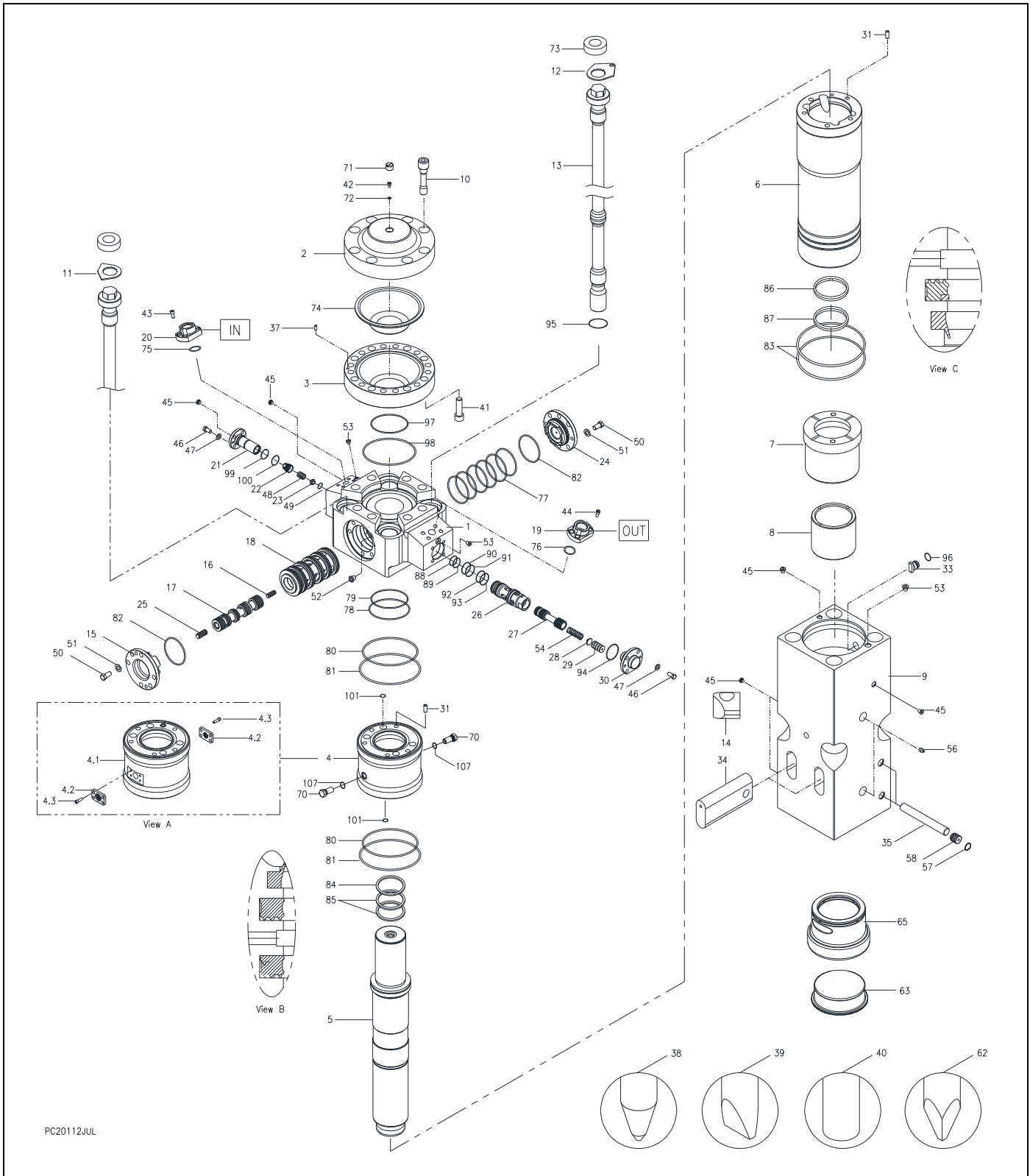


Fig. 4-2 Breaker Assembly

4.0 Parts Information [cont'd]**Table 4.2 Breaker Assembly –cont'd**

Item	Description	Part N^o.	QTY	Remarks / Specifications
72	Usit-Ring	676201	1	
73	Rubber Ring	101585	4	
74	Membrane	570979	1	
75	O-Ring	677977	1	
76	O-Ring	659275	1	
77	O-Ring	A102329	6	
78	O-Ring	A101774	1	
79	Back-up Ring	101776	1	
80	O-Ring	101777	2	
81	Back-up Ring	101778	2	
82	O-Ring	676202	2	
83	O-Ring	570767	2	
84	Wiper	570768	1	View B 84,85
85	Seal	570769	2	
86	Seal	570771	1	View C 86,87
87	Wiper	570770	1	
88	Back-up Ring	101790	1	View E 88,89,90,91,92,93
89	O-Ring	101781	1	
90	O-Ring	676251	1	
91	Back-up Ring	101789	1	
92	O-Ring	100109	1	
93	Back-up Ring	101788	1	
94	O-Ring	676203	1	
95	O-Ring	570772	4	Qty was 8 now 4.
96	O-Ring	676200	1	
97	O-Ring	101839	1	
98	Back-up Ring	101840	1	
99	O-Ring	676206	1	
100	O-Ring	676245	1	
101	O-Ring	571004	2	
*	Guide Ring	---	---	View D. Use is discontinued
106	O-Ring	572387	1	Use is discontinued
107	O-Ring	100097		View A

4.0 Hydraulic Connections

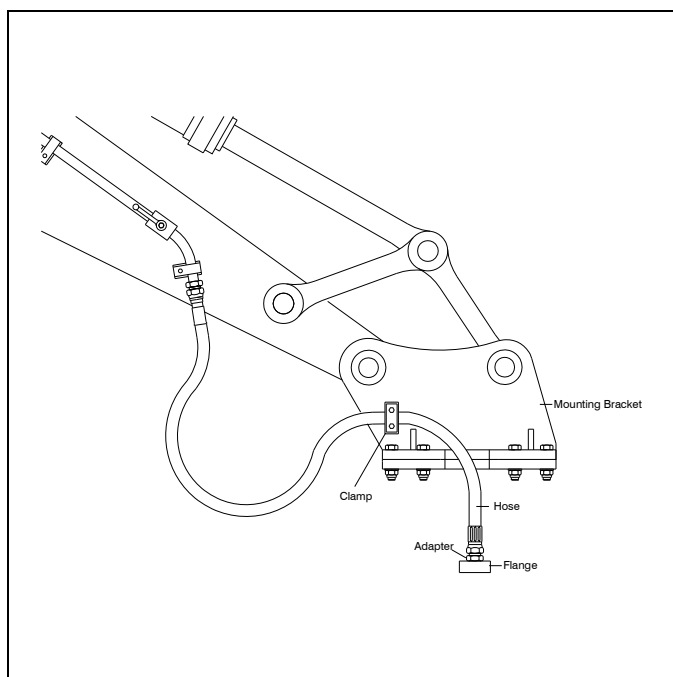


Fig. 4-3 Hose Routing To Excavator - Typical

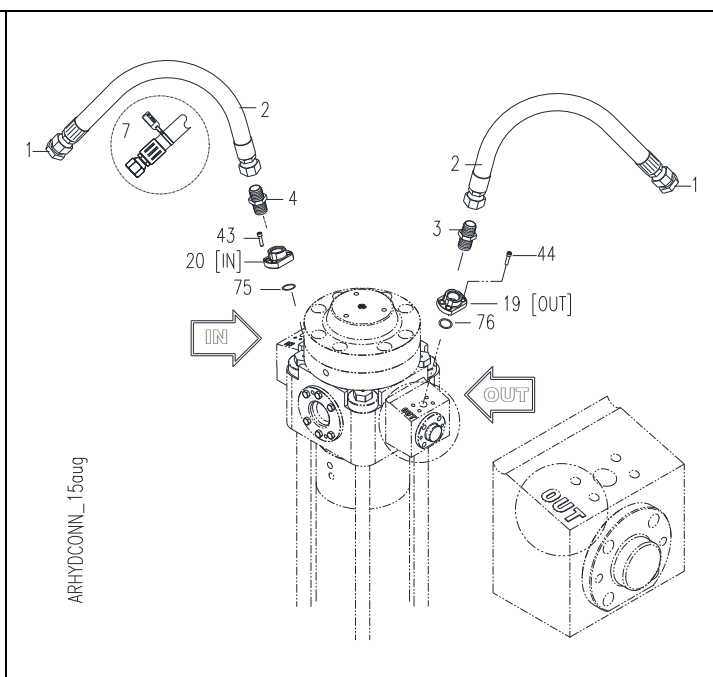


Fig. 4-4 Hydraulic Connections

Table 4.3 Hydraulic Connections

Item	Description	Part No.	Qty	Remarks / Specifications
1	Plug	815152	2	Size 20
2	Hose	678011	2	1 ¼ x 102"
3	Adapter	719151	1	Size 20x20
4	Adapter	719320	1	Size 16x20
5	Pressure "IN" ID Tag	818676	1	Attached to hose identifies the oil supply line [IN]
19	Flange [OUT]	572704	1	Size 20
20	Flange [IN]	572705	1	Size 16
43	SH Bolt	90564	4	M12
44	SH Bolt	103002	4	M14
75	O-Ring	677977	1	
76	O-ring	659275	1	
---	Hose Clamp	541715	2	Fig 4-3 Part of Mounting Bracket

5.0 Tool Selection Guide – Standard & Specialty

5.1 Tools - Standard Type

The three most commonly used tool points for concrete demolition, rock cutting and boulder reduction are the Conical, Chisel and Blunt.

A. Chisel (Wedge – Cross Cut or In-Line) – Suitable applications include soft rock and general demolition of concrete. The tool penetrates into the material, forcing it to separate. Useful when cutting action is required, e.g. benching and trenching.

B. Conical Point - Same applications as the chisel. The conical point penetrates the material and its shape makes it less prone to twisting which can lead to burring of the tool's retainer pin.

C. Blunt Tool – Designed for impact breaking. The blunt tool is effective in secondary breaking of oversize rock or boulder reduction.

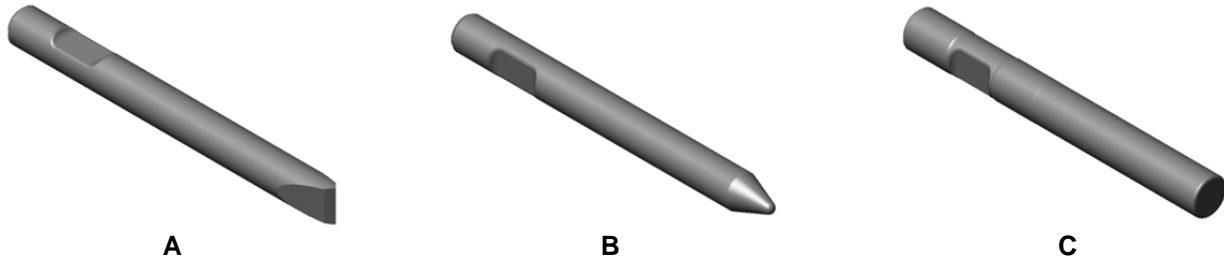


Fig. 5-1 Standard Tool Types Identified A thru C.

5.1.2 Tools - Specialty Type*

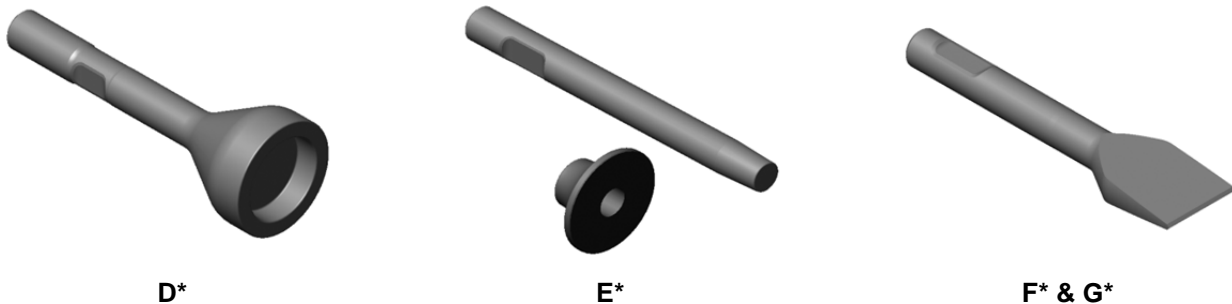


Fig 5-2 Specialty Tool Types Identified D thru G.

Specialty tools have a specific purpose or function designed into each tool. These tools can extend the versatility of a hammer, thus increasing productivity and eliminating the need for additional equipment.

D. Post Driver – For driving posts, pipes, etc.

E. Tamper – Designed to compact loose material.

F. Frost Cutter – For cutting into frozen ground.

G. Asphalt Cutter – Designed to cut seams in asphalt for removal. Useful when removing asphalt to dig a trench. Available in Cross-Cut and In-Line configurations.

General illustrations shown. Actual design may vary. For availability of tool types not listed, contact Allied.

*Not available for all models.

5.0 Tool Selection Guide – [cont'd]

Table 5.1 Standard Type Tools

<u>Item</u>	<u>Description</u>	<u>Part No.</u>	<u>WL [mm] x TD in. [mm]</u>	<u>Weight lbs. [kg.]</u>
38-B	Conical Point	570540	27 [685] x 5.51 [140]	275 [125]
39-A ¹	Chisel Cross Cut	570530	27 [685] x 5.51 [140]	275 [125]
---	Chisel In-Line	--- ²	27 [685] x 5.51 [140]	---
40-C	Blunt End	570740	21 [535] x 5.51 [140]	255 [115]
62 ²	Pyramid (Not Pictured)	--- ²	--- x 5.51 [140]	---

¹ **Standard tool supplied with breaker**

² For availability of tool types not listed, contact Allied

³ TD - Tool Diameter

⁴ WL - Working Length

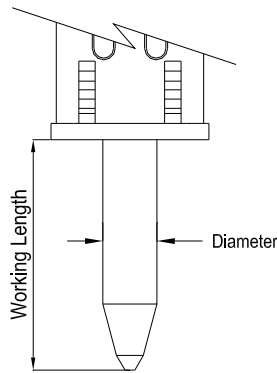


Fig. 5-3 TD & WL

5.2 Lubrication For Bushing and Tool

5.2.1 Allied Chisel Paste

Wear costs money, sometimes lots of money. Without proper lubrication, bushings and tools will quickly wear from friction related damage.

When choosing grease to lubricate the bushing and tool, it's important to emphasize that the "right type" is equally important as "how much" and "how often".

A key element in minimizing wear is through the regular use of a high-quality lubricant. Formulated as a 'specialty' lubricant, Allied Chisel Paste is ideally suited for use in heavy loaded, sliding motion and high temperature applications.

Allied Chisel Paste outperforms 'Multi-purpose' type grease, when used in this application, due to its unique formula with added solids. Solid lubricants, which include fine particles of molybdenum, graphite and copper, combine to form a protective layer between metal parts which minimize direct surface contact during periods of heavy loading (extreme pressure).

Grease labeled 'General / Multi-Purpose' may contain modest amounts of solid lubricants - if any at all. At times when the tool is thrust against the bushing, the liquid lubricant is squeezed out, exposing unprotected surfaces to damage from friction.

Many factors, including operator technique, determine whether the breaker will remain productive. But with attention to preventive maintenance practices, including timely lubrication, and through the regular use of Allied Chisel Paste, the usable service life of these parts can be maximized while the cost to replace them and loss of production from down time is minimized.

Table 5.2 Chisel Paste Ordering Information

<u>Container</u>	<u>Packaging</u>	<u>Part No.</u>
14.5 oz. Cartridge*	Qty x 10	574430
14.5 oz. Cartridge*	Qty x 30	574431
35 lbs. Bucket	Qty x 1	676698
120 lbs. Drum	Qty x 1	679968

* 14 oz. cartridge fits standard grease gun

6.0 Service Kits & Tools

6.1 Tune-up Kit

All breakers require regular maintenance and periodic parts replacement. Follow the recommended service schedule to maintain reliable service.

Tune-up kits can help restore performance by replacing common wear parts. Tune-up kits offer the convenience of combining parts that usually need to be replaced at the same time into one pre-packaged kit.

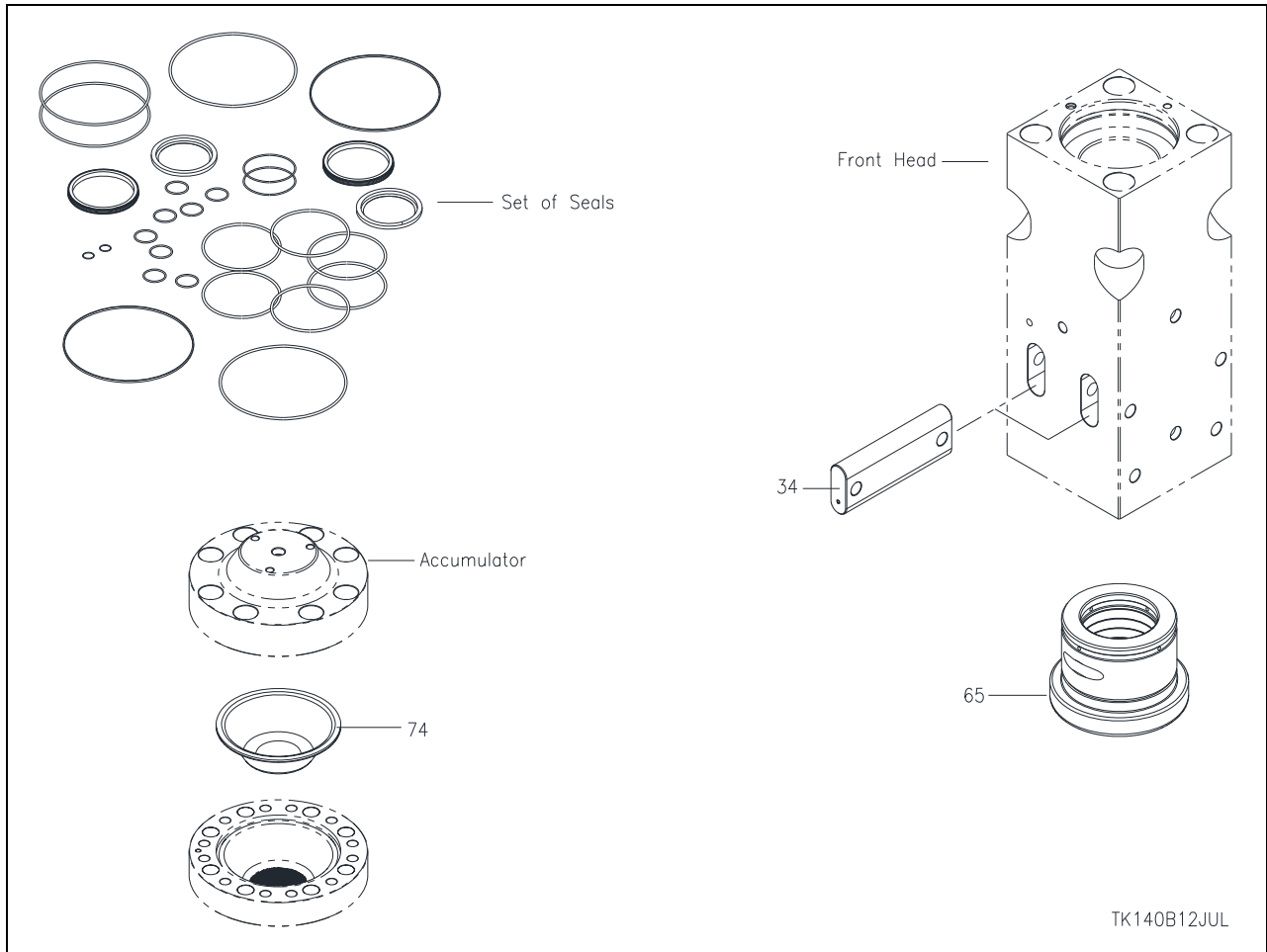


Fig. 6-1 Tune-up Kit

Table 6.1 Tune-up Kit

Item	Description	Part N ^o .	Qty	Remarks / Specifications
---	Tune-up Kit	571003	1-Kit	Kit includes set of seals, 34,65,74
---	Set of Seals	570773	1	Refer to Table 6.2
34	Tool Retainer Bar	570976	2	
65	Lower Tool Bushing	570977	1	
74	Membrane for Accumulator	570979	1	



Refer to the instructions given in Repair Manual 572591 for proper installation of parts.

6.0 Service Kits & Tools – [cont'd]

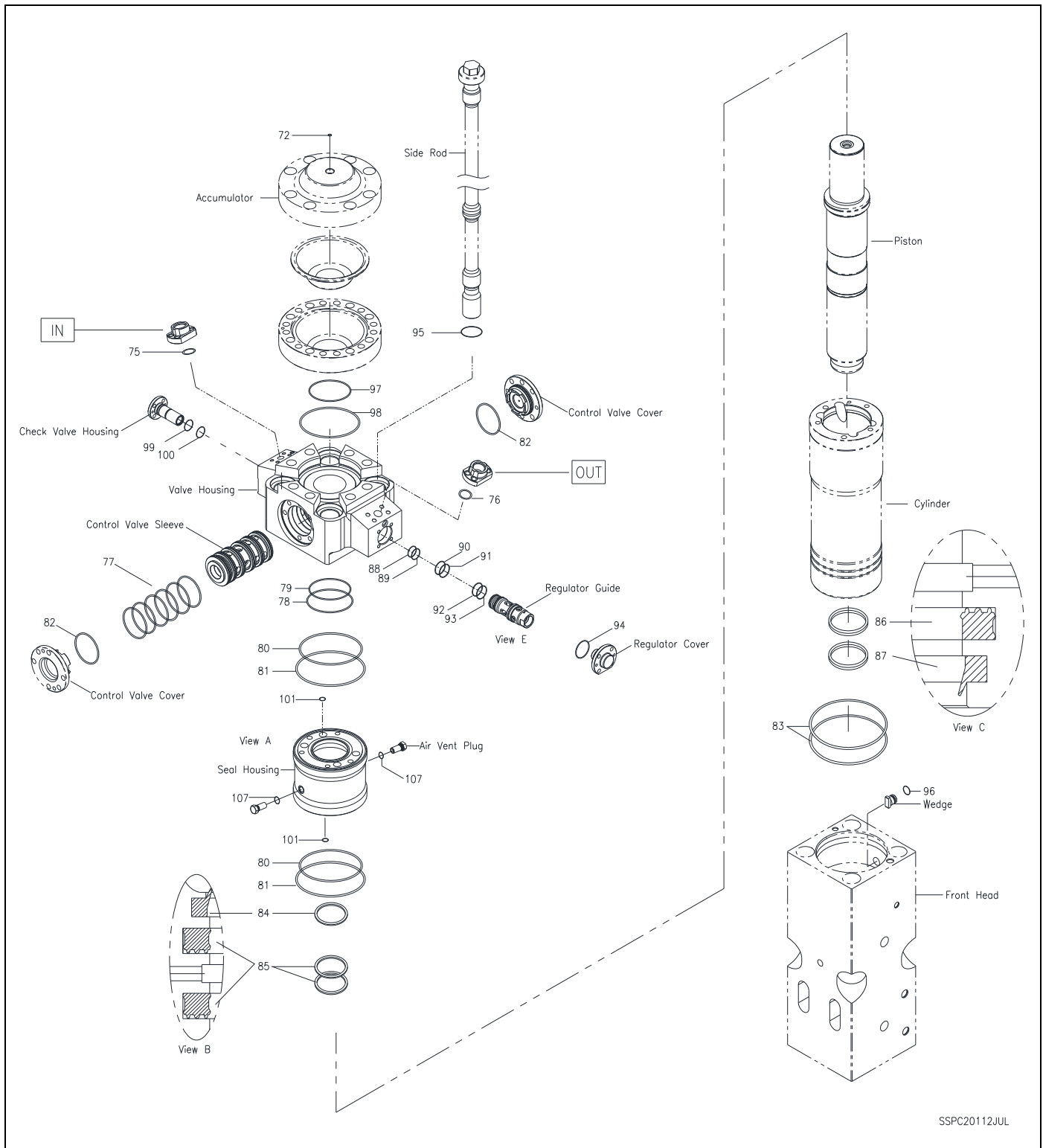


Fig 6-2 Seal Positions Identified



Refer to the instructions given in Repair Manual 572591 for proper assembly of parts.

6.0 Service Kits & Tools – [cont'd]**Table 6.2**

<u>Item</u>	<u>Description</u>	<u>Part N^o</u>	<u>QTY</u>	<u>Remarks / Specifications</u>
---	Seal Set	570773	1	Fig. 6-2
72	Usit-ring	676201	1	
75	O-Ring	677977	1	
76	O-Ring	659275	1	
77	O-Ring	A102329	6	
78	O-Ring	A101774	1	
79	Back-up Ring	101776	1	
80	O-Ring	101777	2	
81	Back-up Ring	101778	2	
82	O-Ring	676202	2	
83	O-Ring	570767	2	
84	Wiper	570768	1	Fig. 6-4 84,85 View B
85	Seal	570769	2	
86	Seal	570771	1	Fig. 6-5 86,87 View C
87	Wiper	570770	1	
88	Back-up Ring	101790	1	Fig. 6-6 88,89,90,91,92,93 View E
89	O-Ring	101781	1	
90	O-Ring	676251	1	
91	Back-up Ring	101789	1	
92	O-Ring	100109	1	
93	Back-up Ring	101788	1	
94	O-Ring	676203	1	
95	O-Ring	570772	4	Qty Was 8 - Now Qty 4.
96	O-Ring	676200	1	
97	O-Ring	101839	1	
98	Back-up Ring	101840	1	
99	O-Ring	676206	1	
100	O-Ring	676245	1	
101	O-Ring	571004	2	
106	O-Ring	572387	1	Use discontinued on lower tool bushing
107	O-Ring	100097	2	Fig. 6-3 View A
---	Thread Lube	676927	1	For use on side rod threads. Follow application instructions.



Refer to the instructions given in Repair Manual 572591 for proper assembly of parts.

6.0 Service Kits & Tools – [cont'd]

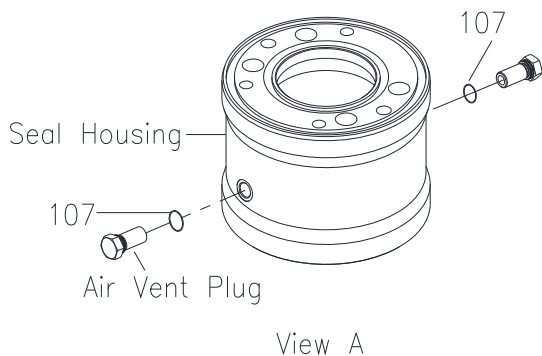


Fig 6-3 Breather Vent Seals

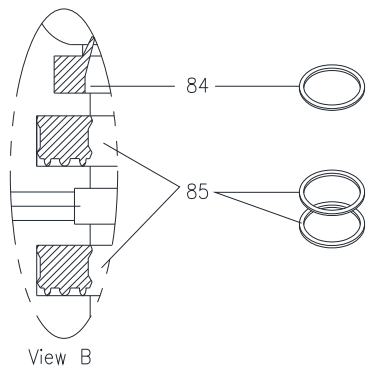


Fig 6-4 Housing Seals

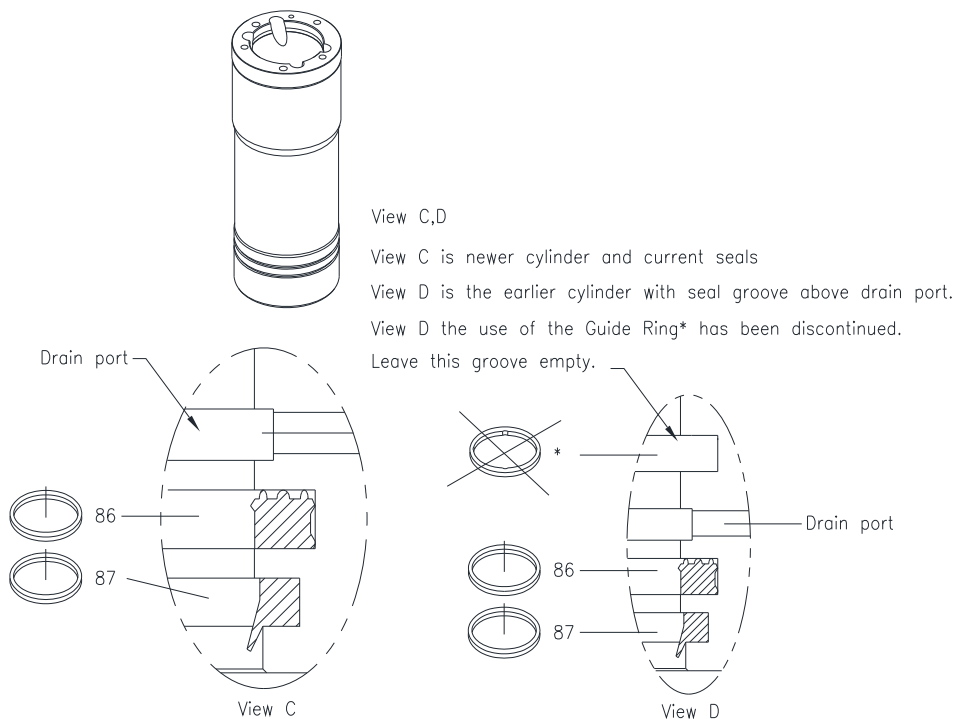


Fig 6-5 Cylinder Seals

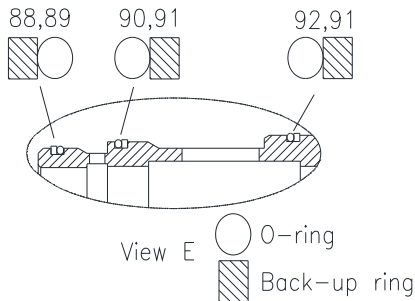


Fig 6-6 Regulator Guide Seals

IMPORTANT

Contamination interferes with reliable operation and will shorten component life. Prevent dirt and debris from entering the hydraulic system. Always work in a clean area. Keep seals properly stored in their original, sealed package until ready for use.

6.0 Service Kits & Tools – [cont'd]

6.3 Accumulator N2 Gas Charge Equipment

The accumulator is a self-contained pressure vessel with an elastic membrane dividing the inner chamber. The lower chamber is used to receive, store and discharge pressurized oil, while the upper chamber contains nitrogen gas under pressure.

Replacement of the membrane will require re-filling with nitrogen gas. Filling is accomplished through the use of a commercially available nitrogen bottle and the charging tool. Components of the N2 charge kit are identified in the figure and table below.

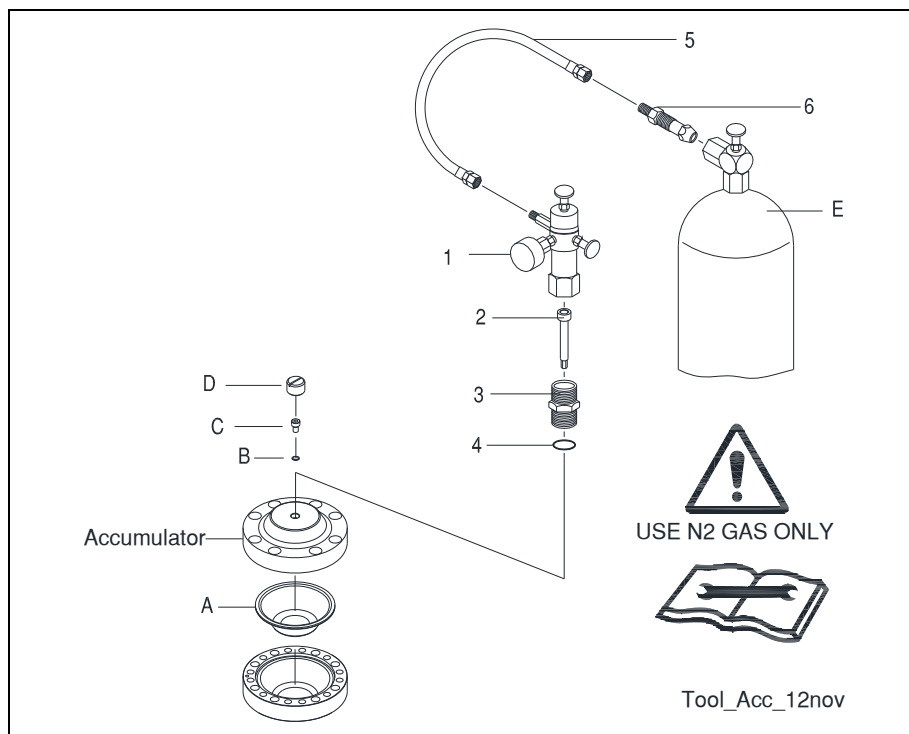


Fig. 6-7 Accumulator N2 Gas Charge Tool

Table 6.3 N2 Gas Charge Kit

Item	Description	Part No.	Qty	Remarks / Specifications
---	N2 Gas Charge Kit	570071	1-Kit	Kit includes 1,2,3,4,5,6
1	Charge Valve with Gauge	100527	1	Includes 2-6 (& storage case - not shown)
2	Socket Bolt	40601	1	
3	Adaptor	R101635	1	
4	O-ring	901135	1	
5	Hose	N/A	1	8 Ft. [2.5 M] Not Available Separately
6	Adapter for N2 Gas Bottle	N/A	1	Not Available Separately
E	Nitrogen Gas Bottle	N/A	---	Not Available from Allied (Source Locally)
A,B,C, D,E	Membrane, U-sit ring, Bolt, Cap, N2 Gas Bottle	---	---	A,B,C,D,E Shown only for reference and are not included in charge kit.



For the safe and proper use of this tool, read, understand and follow all instructions given in the Safety, Operation & Maintenance 576701

7.0 Mounting Information

7.1 Mounting Brackets

The mounting bracket (not included - order separately) is bolted to the connection plate located at the top of the housing box. It is required to attach the Breaker to a carrier.

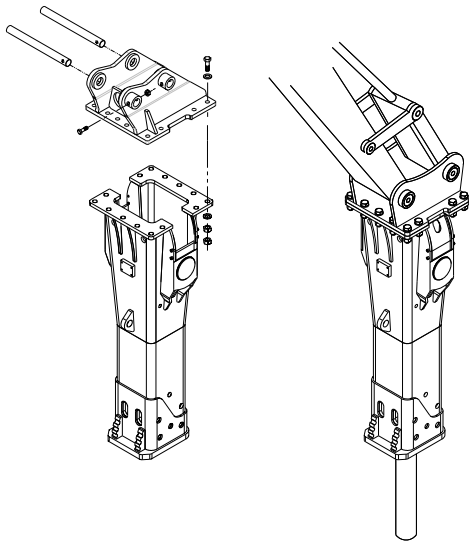


Fig. 7-1 Housing Box, Mounting Bracket & Hardware (Typical)

Allied offers an array of mounting brackets to fit virtually any carrier, including those equipped with pin-grab or hook style mounting couplers.

7.2 Connection Plate

When ordering mounting brackets, complete information about the carrier (and coupler if equipped) is required – including:

Carrier make	_____
Model	_____
Series	_____
Serial number	_____
Coupler make	_____
Model	_____
Series	_____
Serial Number	_____

Refer to Figure 7-2. The thickness of the plate, as well as other dimensions, including the quantity, diameter and spacing of the bolt holes will vary between breaker models.

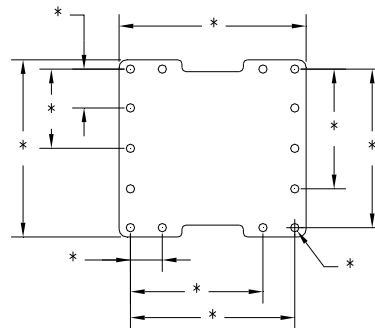


Fig. 7-2 Connection Plate – Dimensions Vary

Refer to Table 7.1. The “Family” designates the size of the connection plate that is welded to the housing box. Other Allied work tools, including the Ho-Pac® utilize these same mounting Families. Dimensions for these connection plates can be found in the Safety, Operation and Maintenance Manual.

Table 7.1 Mounting Family & Hardware

Family	Model	Bolt	FL Washer	LK Washer	Nut
LR8	AR130B, AR140B	101765 (14)	901291 (28)	658529 (14)	90507 (14)



See Operation & Maintenance Manual for Tightening Torque

8.0 How To Order Spare Parts

Your local Allied dealer requires the Product Name, Model and Serial Number to better assist you with questions regarding parts, warranty, operation, maintenance, or repair. This information should be noted in Section 2.3 of this manual.

Product Hydraulic Impact Breaker
 Model AR140B
 Serial No. _____

Please fill out completely

Line	Description	Part Number	Quantity	Price
1				
2				
3				
4				
5				
6				
7				
8				
9				
10				

Your contact information

Your Name _____ Company Name _____
 Phone _____ Account Number _____
 Fax _____ Purchase order _____
 Email _____ Shipping carrier _____

*See note below

Billing Address _____ Shipping Address _____

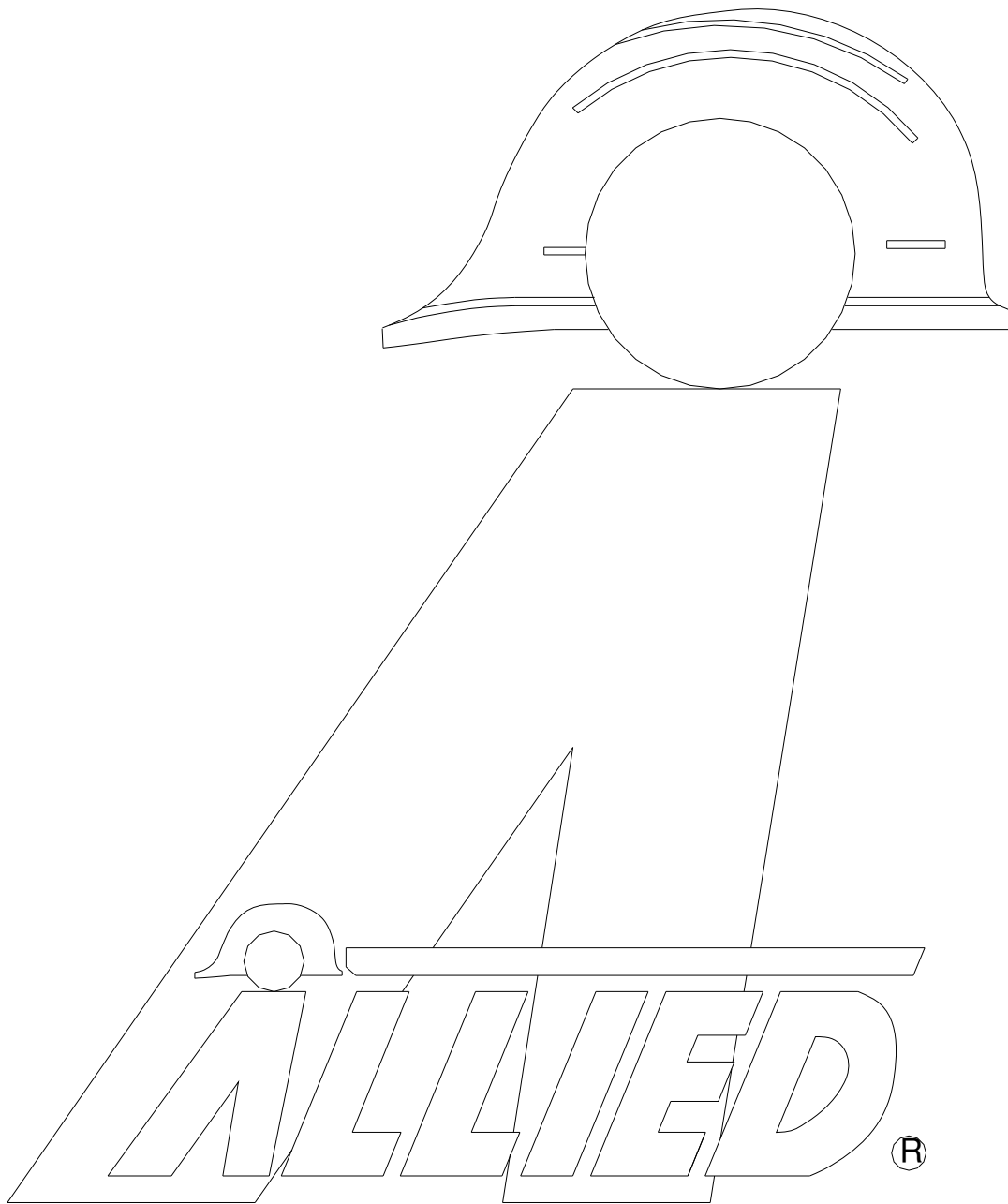
***Note: All backordered parts will be shipped when available via the same method as the original order unless initialed and checked below:**

Initials

_____ ☐ Ship complete order only
 _____ ☐ Ship available parts and contact customer on disposition of backordered parts
 _____ ☐ Other – specify below

NOTES

[illegible]



3900 Kelley Avenue, Cleveland, Ohio 44114
Tel: 216-431-2600 Fax: 216-431-2601
e-mail: Sales@AlliedCP.com
website: <http://www.AlliedCP.com>