

# HYDRAULIC IMPACT BREAKER AR175



## Parts Manual AR-SERIES

Keep this manual in a convenient location so that it is easily accessible for future reference. Contact your Allied Dealer or the Allied Customer Service Department for replacement manuals. Enquiries regarding the content of this manual must include effective date shown on inside cover.



PM575171



Contact Information

Allied Construction Products, LLC

3900 Kelley Ave

Cleveland, Ohio 44114

Tel: 216-431-2600

Fax: 216-431-2601

[www.alliedcp.com](http://www.alliedcp.com)

E-mail: [sales@alliedcp.com](mailto:sales@alliedcp.com)

**Revision History of Document 575171**

Allied Construction Products, LLC reserves the right to change, edit, delete or modify the content of this document, including descriptions, illustrations and specifications without prior notification. Specifications are based on published information at the time of publication. Go to [www.alliedcp.com](http://www.alliedcp.com) for product or document updates.

<b><u>Effective Date</u></b>	<b><u>Page</u></b>	<b><u>Summary of Change</u></b>
Jan 15, 2011	All	1 <sup>st</sup> Edition 575171_rev11jan
Mar 24, 2011	15, 13	575171_rev11mar Correct seal part number #98, show #72 on seal kit table
Mar 9, 2011	17	575171_rev12mar Correct conical point tool part number #34-B 575144
May 17, 2012	8	Table 4.1 item 219 was SB1420320, item 220 was PW140000
Aug 1, 2012	18,19	Table 5.1 revised part number for items 80, 103

**Table of Contents**

<u>Section</u>	<u>Page</u>
<b>Contact Information</b> .....	<b>i</b>
<b>Document Revisions</b> .....	<b>i</b>
<b>Table of Contents</b> .....	<b>ii</b>
<b>1.0 Introduction &amp; Scope</b> .....	<b>1</b>
1.1 Purpose of This Manual.....	1
1.2 How to Order Replacement Manuals.....	1
1.3 Related Publications.....	1
<b>2.0 Equipment Identification</b> .....	<b>2</b>
2.1 Serial Number Location.....	2
2.2 Equipment Identification Tag.....	2
2.3 Owner's Record of the Equipment.....	2
<b>3.0 Safety &amp; Information Labels</b> .....	<b>3</b>
<b>4.0 How To Order Spare Parts</b> .....	<b>6</b>
4.1 Housing Components.....	7
4.2 Breaker Assembly.....	9
4.3 Hydraulic Connections.....	15
4.4 Standard Tools.....	16
4.5 Specialty Tools.....	16
4.6 Chisel Paste.....	17
<b>5.0 Service Kits</b> .....	<b>18</b>
5.1 Seal Kit.....	18
5.2 Tune-Up Kit.....	20
5.3 N2 Gas Charge Kit.....	21
<b>6.0 Mounting Information</b> .....	<b>22</b>
6.1 Mounting Brackets.....	22

<u>List of Figures</u>	<u>Page</u>
2-1 Equipment ID Tag Location.....	2
2-2 Equipment Identification Tag.....	2
3-1 thru 3-13 Safety & Information Labels.....	3
3-15 Location of Labels on Equipment.....	5
4-1 Housing & Components.....	7
4-2 Breaker Assembly.....	9
4-3 Hydraulic Connections.....	15
4-4 Hose Routing To Excavator – Typical....	15
4-5 Standard & Specialty Tools.....	16
4-6 Tool Diameter & Working Length.....	17
5-1 Seal Set.....	18
5-2 Tune-up Kit.....	20
5-3 N2 Gas Charge Kit.....	21
6-1 Mounting Bracket - Typical .....	22
6-2 Housing Connection Plate .....	22

## Introduction and Scope

### 1.1 Purpose of This Manual

#### Parts Manual 575171

This manual has been prepared to assist with the identification of all components used in the Hydraulic Breaker. Figures depicted in Parts Manuals are for purposes of parts identification. The Parts Manual is not intended for use in the repair or service of the Allied equipment.

Content included in the Parts Manual:

- Illustrations of assemblies, name of part, quantity and descriptions that help identify each component and its location on the Hydraulic Breaker.
- Ordering information for the safety and information labels displayed on the equipment.
- For your convenience, an order form is included in this manual

Material presented in this manual, including illustrations and descriptions, is intended solely for use with the equipment identified in Table 1.1 and may not be suitable for other models.

Prior to use, confirm that the information recorded on the equipment's identification label corresponds with Table 1.1. For the location of this label, refer to Section 2.0.

**Table 1.1 About This Manual**

Document ID.	PM575171
Category	Spare Parts
Current Status	See Inside Cover
Product Name:	Hydraulic Breaker
Applicable Model[s]:	AR175
Years of Manufacture:	2010 & above

The document, identified in Table 1.1, is published solely for information purposes and should not be considered all-inclusive. If further information is required, contact your local Allied dealer or the Allied Customer Service Department.

The content of this manual has been reviewed for accuracy. Allied Construction Products, LLC has

endeavored to deliver the highest degree of accuracy possible. However, continuous improvement of our products is an Allied policy. Therefore, material presented in this manual, including descriptions, illustrations and specifications, is subject to change without prior notice. Revisions made to the content of this manual are recorded on the inside front cover.

### 1.2 How To Order Replacement Publications

This manual is an integral part of this product. Keep it in a convenient location so that it is easily accessible for future reference.

Replacement manuals can be ordered by contacting your Allied dealer service center. These manuals may also be viewed and downloaded at: [www.alliedcp.com](http://www.alliedcp.com)

### 1.3 Related Publications

Allied Construction Products, LLC offers the following publications for the product identified in Table 1.1.

#### Safety, Operation & Maintenance Manual 575290

For use with Models: AR165, AR175

This manual has been prepared to assist the operator and maintenance personnel with the information necessary for the safe and proper use of the Allied Breaker.

Content included in the Safety, Operation & Maintenance Manual:

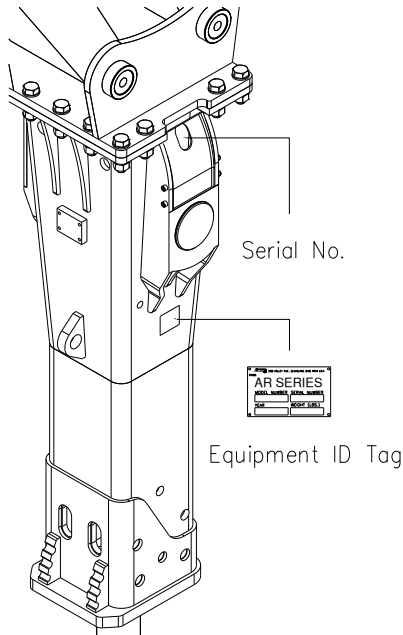
- Safety Information
- Equipment Identification
- Technical Data (Weight & dimensions)
- Installation and Set-up
- Pre-Operation Inspection
- How to Operate the Equipment
- Maintenance Schedule
- Lubrication
- Tool and Guide Bushing – Inspection / Changing
- Troubleshooting
- Transporting, Removal, Lifting, & Storage

## 2.0 Equipment Identification

### 2.1 Model and Serial Number Location

Refer to Figure 2-1. The Serial Number assigned to this equipment can be found in the following locations:

1. Located on the Equipment Identification Tag
2. Stamped on the Valve Housing



### 2.2 Equipment Identification Tag

The Equipment Identification Tag is affixed to the side of the housing.



**Fig 2-1 Equipment Identification Tag**

The ID Tag provides the following information:

- Allied Logo
- Street Address, City, State - USA
- Product name
- Model number
- Serial number
- Year of manufacture
- Weight

Confirm that the information contained on the Tag corresponds with the information provided in Section 1, Table 1.1.

### 2.3 Owner's Record of the Equipment

- Record the Model and Serial Number from the Equipment Identification Tag to the space provided below.
- Indicate the date in which the Allied equipment was placed into service.

Model AR175

Part Number: 574977

Serial Number: \_\_\_\_\_

In Service Date: \_\_\_\_\_

Product Registration Date \_\_\_\_\_

- Your local Allied dealer requires this information to better assist you with questions regarding parts, warranty, operation, maintenance, or repair.

Register this equipment by returning the completed warranty registration form to Allied.

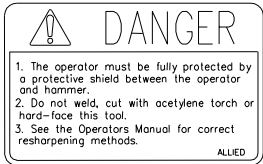

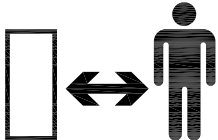

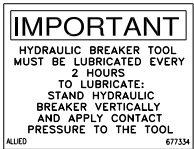

### 3.0 Safety and Information Labels

#### 3.1 Safety Warnings and Information Labels

Information labels affixed to the Allied equipment include safety warnings, identification and instructions important to operation and service. Table 3.1 identifies and describes each label. Words and

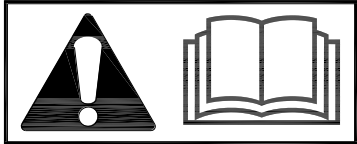



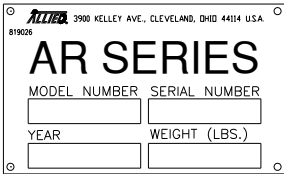
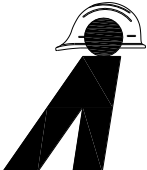
illustrations must be readable. Keep all safety labels clean. Replace damaged or missing labels before operating this equipment. Refer to Table 3.2 for ordering information. Refer to Figure 3-15 for the label's location on the equipment.

**Table 3.1 Identification of Safety and Information Labels**

Figure	Label	Description
3-1		<b>TOOL SHARPENING</b> – Decal warns against welding, cutting, or hard-facing the tool. It directs personnel to the Operation and Maintenance Manual for approved sharpening methods.
3-2		<b>PROJECTILE HAZARD</b> – Alerts of the need for a protective guard to shield the operator from debris generated when the work tool is in operation. It directs personnel to the Operation and Maintenance Manual for safety instruction details. <b>NOTE: Place the smaller size label in a conspicuous location inside the operator's cab.</b>
3-3		<b>STAY CLEAR</b> – Alerts personnel and by-standers to maintain a safe distance from the work tool during operation.
3-4		<b>MAXIMUM PRESSURE</b> – Decal indicates the maximum operating pressure.
3-5		<b>LUBRICATION</b> – Decal identifies the lubrication point, frequency and importance of proper positioning with contact pressure applied to tool before lubricating.
3-6		<b>LIFT POINT</b> – Marks lift points for safe handling of the work tool.

3.0 Safety and Information Labels – cont'd

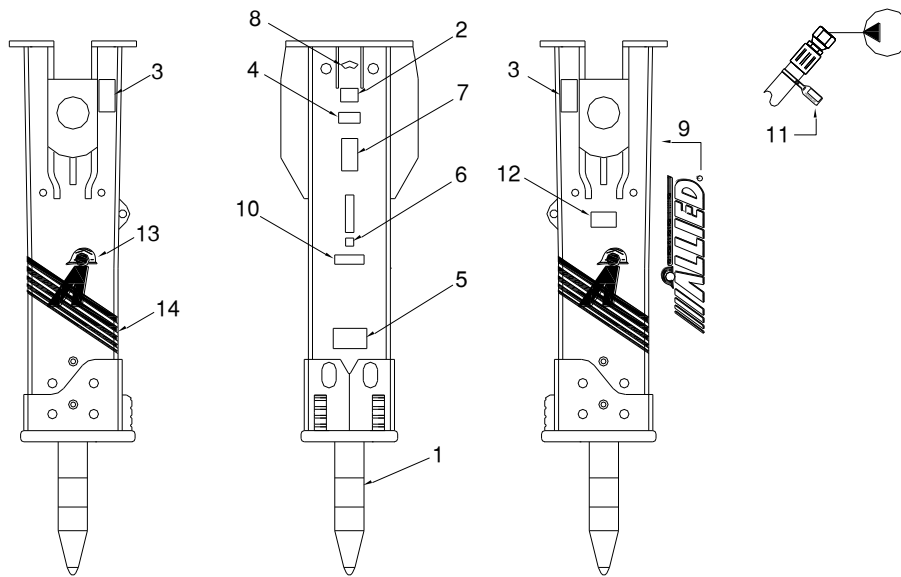
Table 3.1 Identification of Safety and Information Labels – cont'd

Figure	Label	Description
3-7		<b>SAFETY ALERT SYMBOL / READ THE MANUALS</b> - Directs personnel to the manual for safety-related precautions, further information about procedures and instructions.
3-8		<b>PRESSURIZED NITROGEN ACCUMULATOR</b> – Decal warns of pressurized gas. Directs personnel to the Operation and Maintenance Manual for service instructions.
3-9		<b>ALLIED LOGO</b> – This decal is the Allied brand identifier and is a registered trademark of Allied Construction Products, LLC.
3-10	<b>AR175</b>	<b>MODEL</b> – Decal identifies the specific model.
3-11		<b>OIL SUPPLY LINE "PRESSURE" I.D. TAG</b> – A red colored cable tie marked "PRESSURE LINE" is attached to the supply hose for ease of identification between hoses.
3-12		<b>EQUIPMENT ID TAG</b> - Contains identifying information about the equipment, including: Manufacturer's name, address, product name, model number, serial number, year of manufacture, and weight.
3-13		<b>ALLIED LOGO</b> – This decal is the Allied brand identifier and is a registered trademark of Allied Construction Products, LLC.

**3.0 Safety and Information Labels – cont'd**

**Table 3.2 Safety and Information Labels – Ordering Information**

Item	Description	Part No.	Qty	Remarks / Specifications	
---	<b>Label Set</b>	<b>575157</b>	<b>1 (SET)</b>	<b>Set includes 1-11, 13,14</b>	
1	Tool Sharpening	657838	1	Place in conspicuous location inside cab	
2	Danger (Large)	657840	1		
---	Danger (Small)	657839	1		
3	Stay Clear	657841	2		
4	Max Operating Pressure	659140	1		
5	Lube w/ Tool In	677334	1		
6	Lift Point	676982	1		
7	Read Instructions	676984	1		
8	Warning Pressurized Accumulator	102756	1		
9	Allied	676656	1		
10	Model AR175	575158	1		
11	Pressure ID Tag	818676	1		Identifies the oil supply line "IN".
12	Equipment ID Tag	819026	1		This item is not included in Label Set
13	Allied "A"	676649	2		
14	Stripes	TBD	2		



**Fig. 3-15 Location of Labels On Equipment**



## 4.0 How To Order Spare Parts

Your local Allied dealer requires the Product Name, Model and Serial Number to better assist you with questions regarding parts, warranty, operation, maintenance, or repair. This information should be noted in Section 2.3 of this manual.

Product \_\_\_\_\_  
 Model \_\_\_\_\_  
 Serial No. \_\_\_\_\_

Please fill out completely

Line	Part Number	Description	Quantity	Price
1				
2				
3				
4				
5				
6				
7				
8				
9				
10				

Your contact information

Your Name \_\_\_\_\_ Company Name \_\_\_\_\_  
 Phone \_\_\_\_\_ Account Number \_\_\_\_\_  
 Fax \_\_\_\_\_ Purchase order \_\_\_\_\_  
 Email \_\_\_\_\_ Shipping carrier \_\_\_\_\_

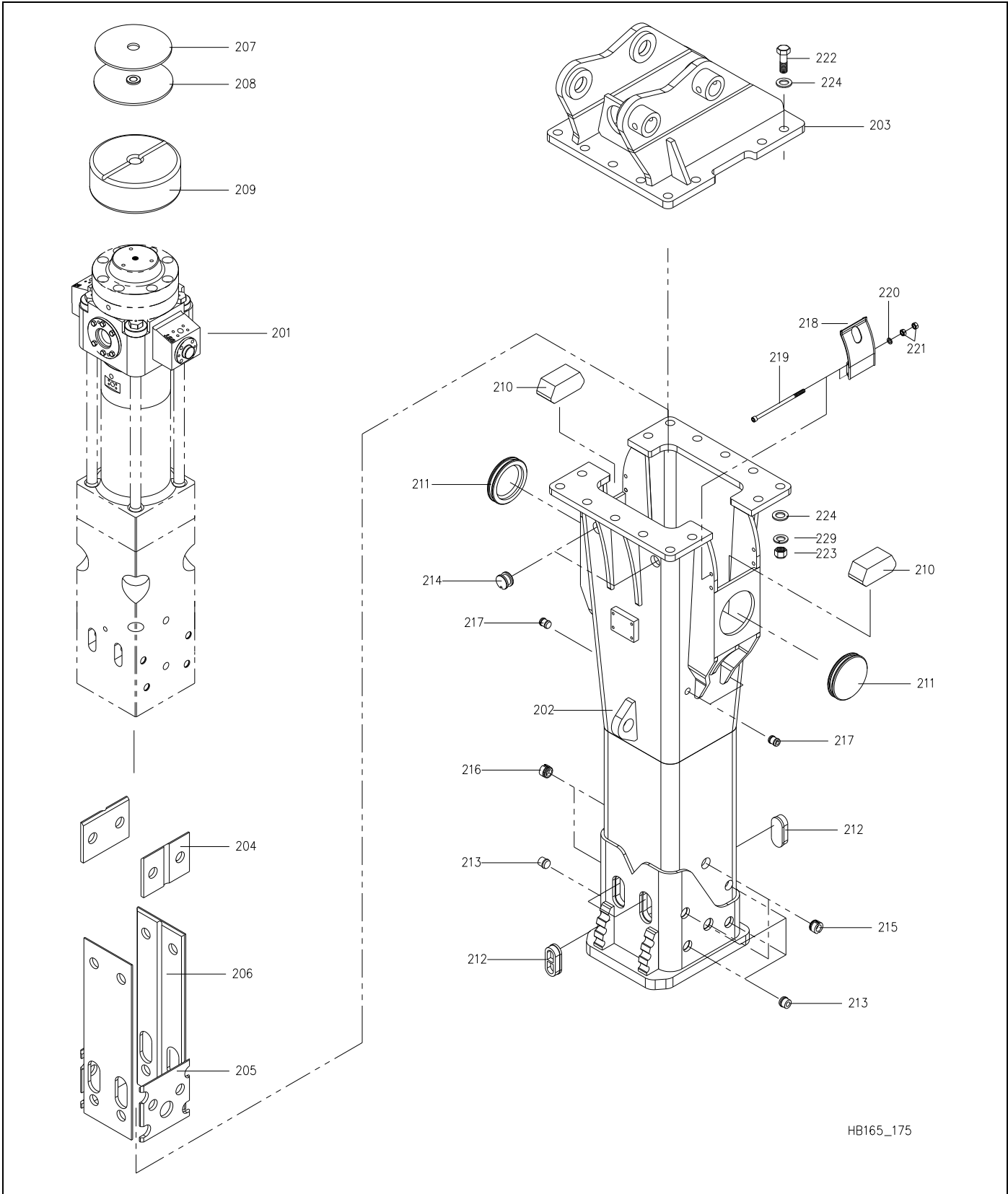
\*See note below

Billing Address \_\_\_\_\_ Shipping Address \_\_\_\_\_  
 \_\_\_\_\_  
 \_\_\_\_\_  
 \_\_\_\_\_

**\*Note: All backordered parts will be shipped when available via the same method as the original order unless initialed and checked below:**

Initials \_\_\_\_\_  
 Ship complete order only  
 Ship available parts and contact customer on disposition of backordered parts  
 Other – specify below  
 \_\_\_\_\_  
 \_\_\_\_\_  
 \_\_\_\_\_

**4.0 Spare Parts Identification**



**Fig. 4-1 Housing Box & Components**

## 4.0 Spare Parts Identification – cont'd

**Table 4.1 Housing Box and Components (\*Standard Configuration Shown)**

Item	Description	Part No.	Qty	Remarks / Specifications
---	Breaker with Housing	574977	---	Mounting bracket item 203 not included. Order separately.
201	Breaker Ass'y	---	1	Refer to Table 4.2 Detail of Components
202	Housing	B5000050-2	1	
203	Mounting Bracket	Varies	---	Order Separately - Refer to Section 6
204	Wear Plate	B300A030	2	
205	Wear Plate	B5000030	2	
206	Wear Plate	B5000040-02	2	
207	Top Wear Plate	571511	1	
208	Top Buffer Plate Ass'y	571510	1	
209	Top Buffer	B3200030	1	
210	Side Buffer	571515	2	
211	Rubber Plug	B4000100	2	
212	Rubber Plug	573159	4	
213	Rubber Plug	571522	8	
214	Rubber Plug	B400W270	2	
215	Rubber Plug	B3200040	2	
216	Rubber Plug	B3200050	2	
217	Rubber Plug	573150	4	
218	Port Cover	B5000150	2	
219	Socket Head Bolt	575258	4	
220	Washer	575257	4	
221	Hex Nut	607264	8	
222	Hex Bolt	573167	14	M36
223	Hex Nut	90519	14	M36
224	FL Washer	573029	28	M36
229	LK Washer	573028	14	M36

4.0 Spare Parts Identification – cont'd

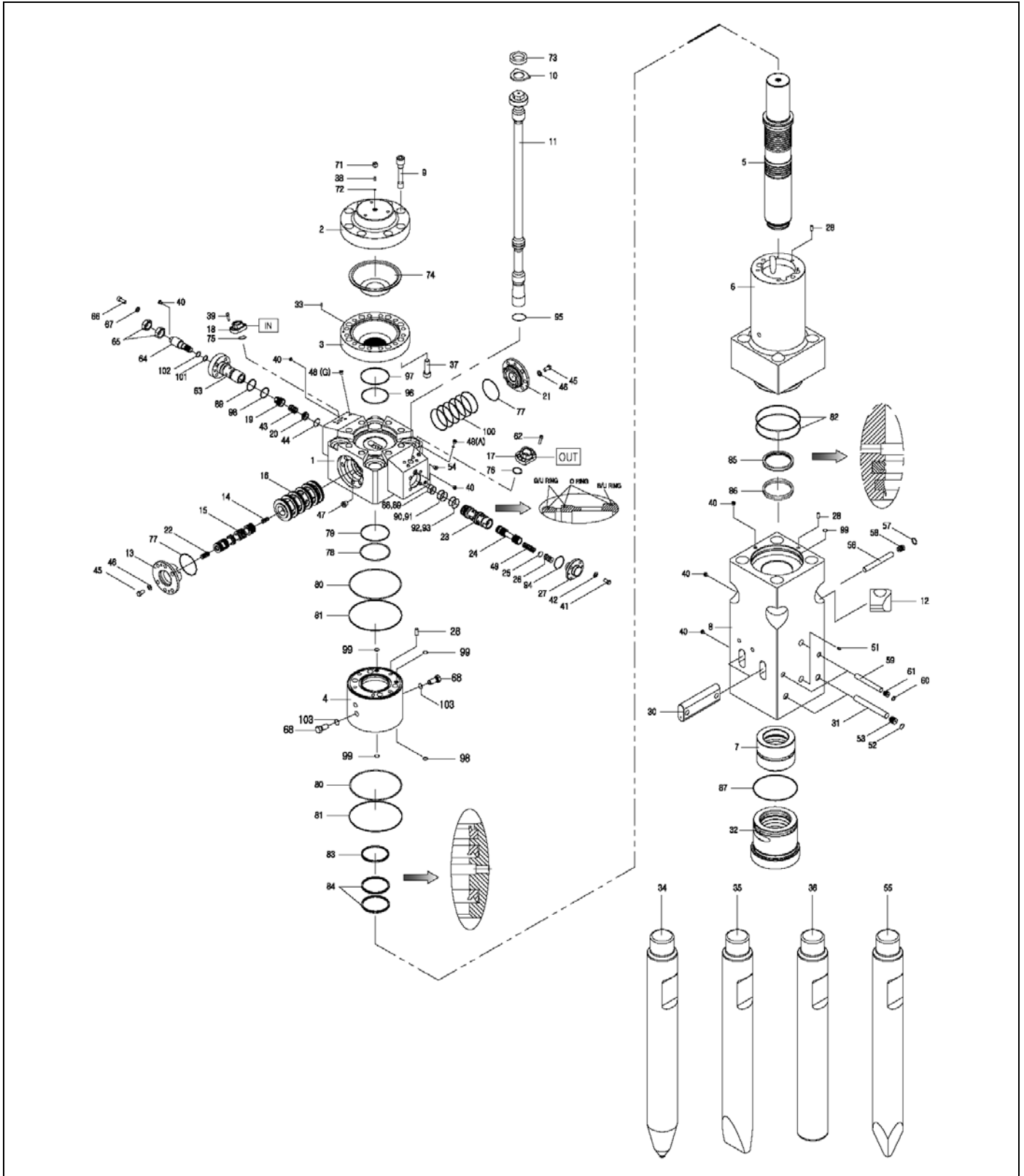


Fig. 4-2 Breaker Assembly

## 4.0 Spare Parts Identification – cont'd

**Table 4.2 Breaker Assembly**

Item	Description	Part No.	Qty	Remarks / Specifications
1	Valve Housing	B5006010	1	
2	Accumulator Cover	B5006020	1	
3	Accumulator Bottom	573126	1	
4	Seal Housing	B5006040-02	1	
5	Piston	B5006050	1	
6	Cylinder	B5006430	1	
7	Upper Tool Bushing	B5006080	1	
8	Front Head	B5006090-01	1	
9	Bolt	572972	8	
10	Lock Washer	B5006110	4	
11	Side Rod	B5006130	4	
12	Side Rod Nut	B5006140	4	
13	Sleeve Cover	571529	1	
14	Spool	571531	1	
15	Main Spool	571532	1	
16	Sleeve	571533	1	
17	Flange	572704	1	1 ¼"
18	Flange	572705	1	1"
19	Check Valve Spool	571535	1	
20	Spring Guide	571536	1	
21	Sleeve Cover	571530	1	
22	Spool	571537	1	
23	Valve Guide	571538	1	
24	Spool	571539	1	
25	Spring Guide	571540	1	
26	Shim	571670	5	
27	Valve Cover	571671	1	
28	Guide Pin	102545	3	
29	---	---	---	
30	Tool Pin	B5006340-02	2	
31	Bushing Pin	573139	2	
32	Lower Tool Bushing	B5006360	1	
33	Guide Pin	676183	1	

4.0 Spare Parts Identification – cont'd

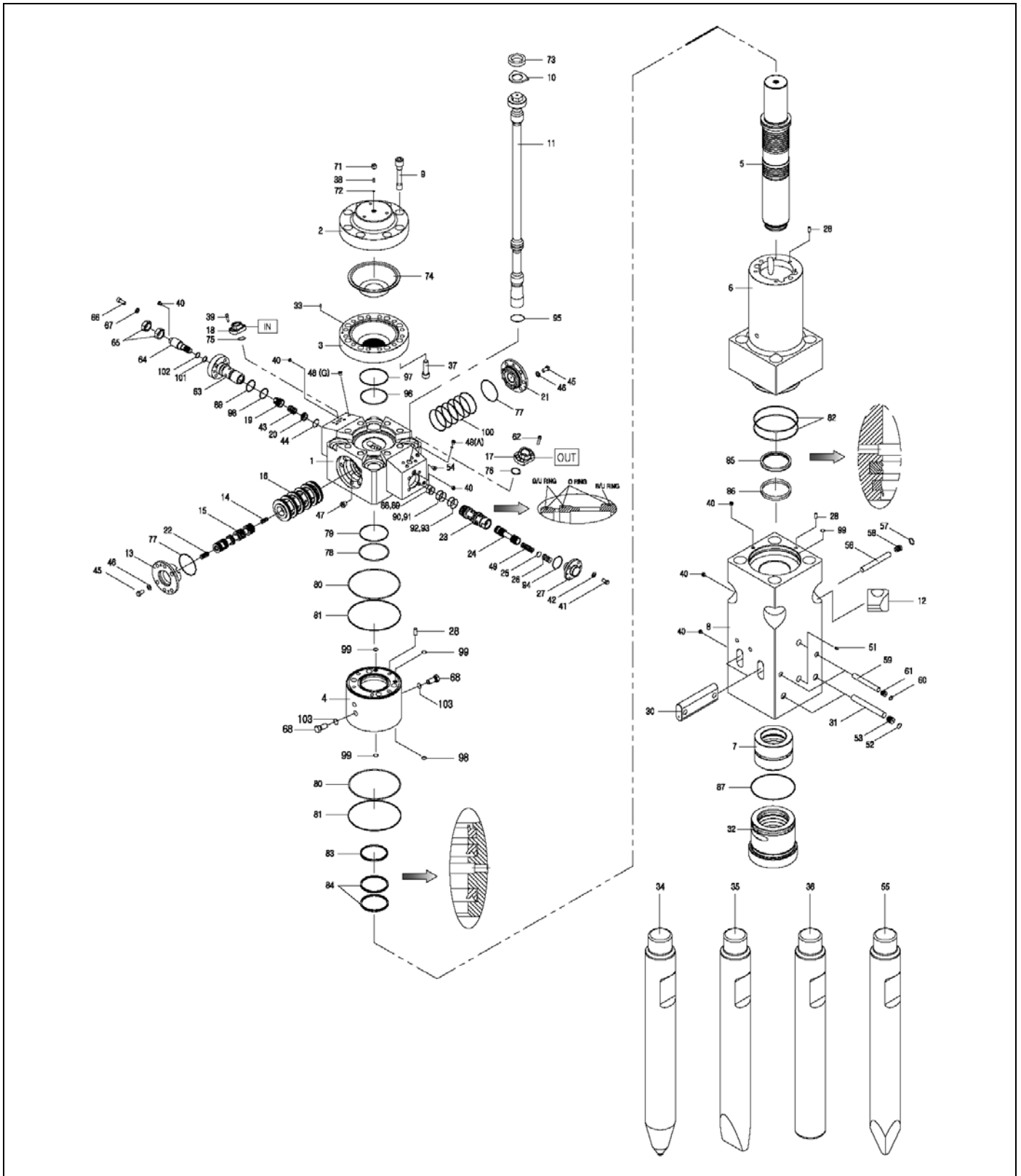


Fig. 4-2 Breaker Assembly

## 4.0 Spare Parts Identification – cont'd

**Table 4.2 Breaker Assembly (cont'd)**

Item	Description	Part No.	Qty	Remarks / Specifications
34				Items 34,35,36 Tool Selection Refer to Table 4.4
35	Tool Selection	Varies	---	
36				
37	Bolt	572982	12	
38	Gas Bolt	676161	1	
39	Bolt	90564	4	
40	Plug	676159	6	
41	Bolt	900017	4	
42	Lock Washer	571055	4	
43	Spring	571672	1	
44	Lock Ring	571673	1	
45	Bolt	90518	12	
46	Lock Washer	571674	12	
47	Plug	571708	1	
48	Plug	102241	2	
49	Spring	B4006890	1	
50	Bolt	965306	8	
51	Grease Nipple	816675	2	
52	Snap Ring	572997	2	
53	Rubber Plug	573021	2	
54	Plug	676158	2	
55	Tool Selection	Varies	---	Refer to Tool Selection Table 4.4
56	Pin	B5006420	1	
57	Snap Ring	571801	1	
58	Rubber Plug	571800	1	
59	Pin	B5006410	2	
60	Snap Ring	570072	2	
61	Rubber Plug	102412	2	
62	Bolt	103002	4	
63	Needle Valve Housing	B6006910	1	
64	Needle Valve Spool	B6006920	1	
65	Nut	B6006930	2	
66	Bolt	SB1620040	4	
67	Lock Washer	NLW16000	4	
68	Air Vent Plug	B2006870	2	
69	---	---	---	
70	---	---	---	

4.0 Spare Parts Identification – cont'd

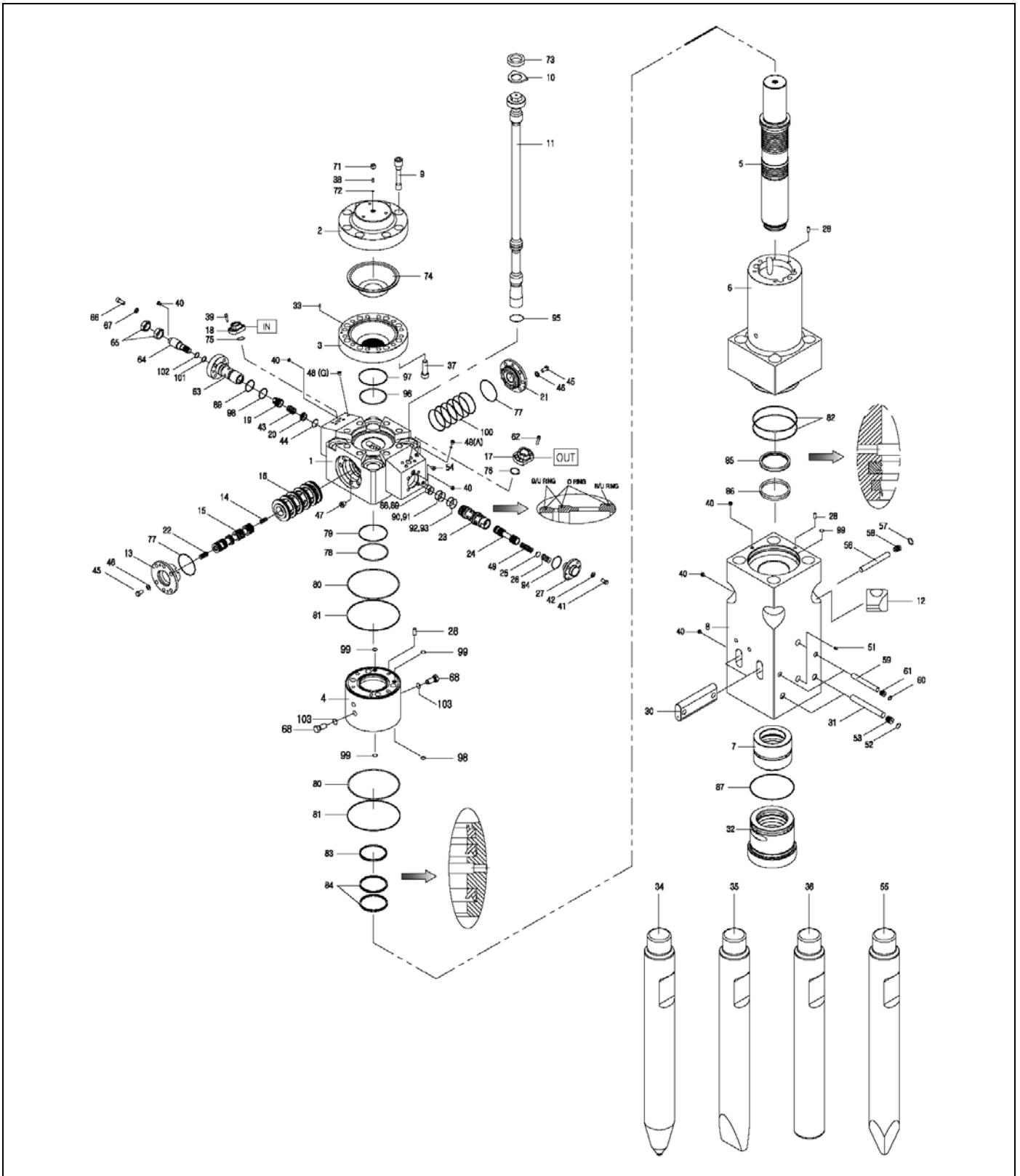


Fig. 4-2 Breaker Assembly



#### 4.0 Spare Parts Identification – cont'd

**Table 4.2 Breaker Assembly (cont'd)**

Item	Description	Part No.	Qty	Remarks / Specifications
71	Cap	102262	1	
72	Usit-Ring	676201	1	
73	Rubber Ring	572983	4	
74	Membrane	573141	1	
75	O-Ring	677977	1	
76	O-Ring	659275	1	
77	O-Ring	571696	2	
78	O-Ring	572360	1	
79	Back-up Ring	573142	1	
80	O-Ring	573143	2	
81	Back-up Ring	573144	2	
82	O-Ring	573145	2	
83	Wiper	573146	1	
84	U-Packing	573147	2	
85	Seal	573148	1	
86	Wiper	573149	1	
87	O-Ring	571695	1	
88	Back-up Ring	101788	1	
89	O-Ring	100109	2	
90	O-Ring	676203	1	
91	Back-up Ring	676205	1	
92	O-Ring	100107	1	
93	Back-up Ring	571705	1	
94	O-Ring	676248	1	
95	O-Ring	B5007250	4	
96	O-Ring	571699	1	
97	Back-up Ring	571706	1	
98	O-Ring	676251	1	
99	O-Ring	571004	5	
100	O-Ring	571693	6	
101	O-Ring	676200	1	
102	Back-up Ring	B3206940	1	
103	O-Ring	100097	2	

4.0 Spare Parts Identification – cont'd

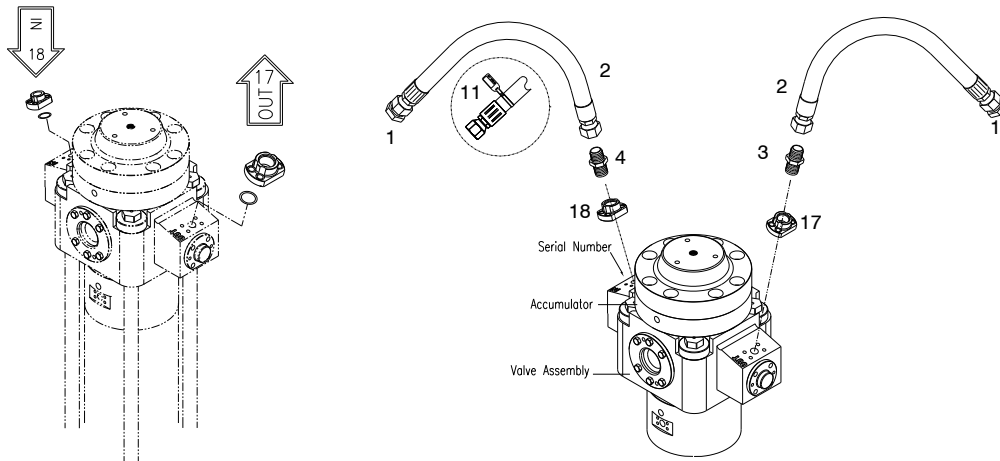


Fig. 4-3 Hydraulic Connections

Table 4.3 Hydraulic Connections (\*Standard Configuration Shown)

Item	Description	Part No.	Qty	Remarks / Specifications
1	Plug	815152	2	20jic
2	Hose	678011	2	1 1/4 x 102"
3	Adapter	719151	1	20jic
4	Adapter	719320	1	16jic
11	Pressure ID Tag	818676	1	Attach to Pressure Line
17	Flange Adapter	572704	1	1 1/4"
18	Flange Adapter	572705	1	1"

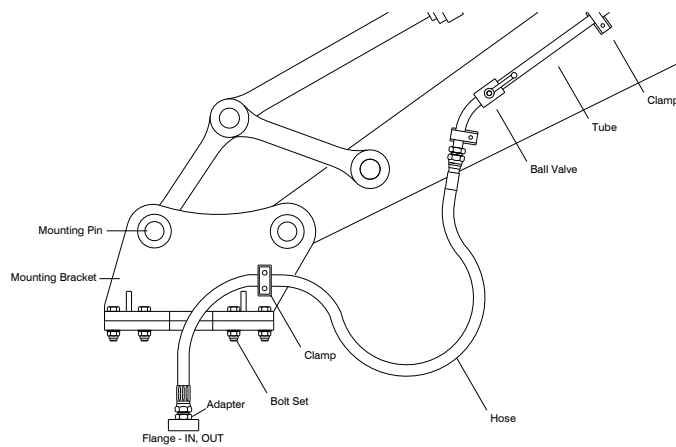


Fig. 4-4 Hydraulic Hose Routing To Excavator - Typical

## 4.0 Tool Selection – Standard & Specialty

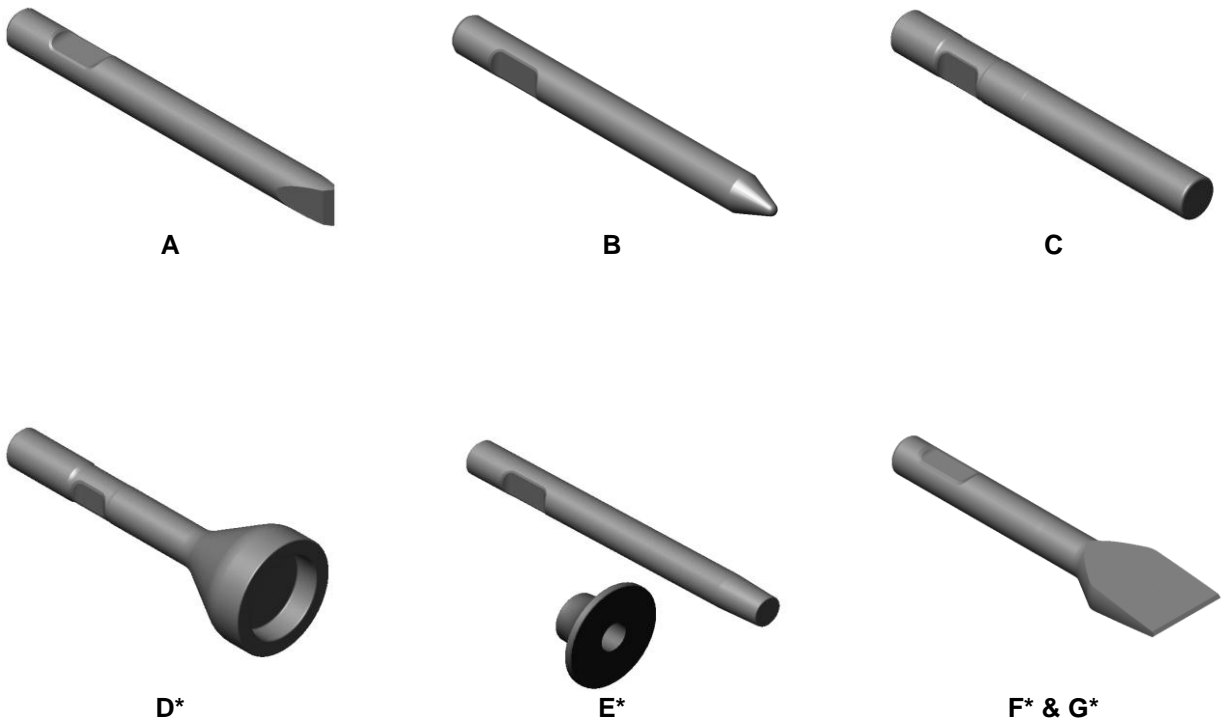
### 4.4 Standard Tool Selection

The three most commonly used tool points for concrete and rock demolition are the Chisel, Conical and Blunt.

**A. Chisel (Wedge – Cross Cut or In-Line) –** Suitable applications include soft rock and general demolition of concrete. The chisel tool penetrates into the material, forcing it to separate. Useful when cutting action is required, e.g. benching and trenching.

**B. Conical Point –** The conical point is used in the same applications as the chisel. The conical point also penetrates, but the rounded-shape resists twisting that is damaging to the tool's retainer pin and retainer notch.

**C. Blunt Tool –** Designed for impact breaking. The blunt tool is effective in secondary breaking of oversize rock or boulder reduction.



**Fig. 4-5 Standard and Specialty Tools**

(\*Shown are general illustrations. Actual tool design may vary)

### 4.5 Specialty Tool Selection\*

Specialty tools have a specific purpose or function designed into each tool. These tools can extend the versatility of a hammer, thus increasing productivity and eliminating the need for additional equipment.

\*Not available for all models.

**D. Post Driver –** For driving posts, pipes, etc.

**E. Tamper –** Designed to compact loose material.

**F. Frost Cutter –** For cutting into frozen ground.

**G. Asphalt Cutter –** Designed to cut seams in asphalt for removal. Useful when removing asphalt to dig a trench. When ordering, specify direction of cutting wedge, either Cross-Cut or In-Line.

## 4.0 Tool Selection – [cont'd]

**Table 4.4 Standard & Specialty Tools**

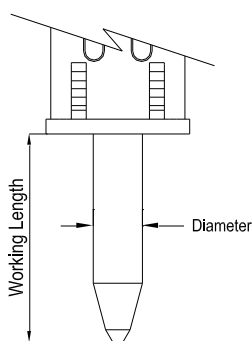
Item	Description	Part No.	TD <sup>3)</sup> x WL <sup>4)</sup> in. (mm)	Weight – lbs. (kg)
34-B	Conical Point	575144	6.89 (175) x 33 (838)	542 (246)
<b>35-A<sup>1)</sup></b>	<b>Chisel Cross Cut</b>	<b>574978</b>	<b>6.89 (175) x 33 (838)</b>	<b>542 (246)</b>
---	Chisel In-Line	--- <sup>2)</sup>	---	---
36-C	Blunt End	575145	6.89 (175) x 29 (737)	545 (247)
55	Pyramid (Not Pictured)	--- <sup>2)</sup>	6.89 (175) x 33 (838)	542 (246)

<sup>1)</sup> Standard tool supplied with breaker

<sup>2)</sup> For availability of tool types not listed, contact Allied

<sup>3)</sup> TD - Tool Diameter

<sup>4)</sup> WL - Working Length



**Fig. 4-6 Diameter & Working Length of Tool**

### 4.6 Allied Chisel Paste

A key element in improving the wear resistance of the bushing and tool is through the regular use of a high-quality lubricant. Allied Chisel Paste performs exceptionally well in this application because it's a "specialty" lubricant, formulated for use in heavy loaded reciprocating motion and high heat applications. Allied Chisel Paste is a unique blend of liquid and solid lubricants.

Solid lubricants, which include particles of molybdenum, copper and graphite, form a highly effective structure that resists being squeezed out during periods of heavy loading.

"General Purpose" grease typically contains little or no solid lubricants. That means once the liquid lubricant is squeezed out, there is a loss of lubrication between the bushing and tool. The result is metal-to-metal contact, which quickly leads to friction related wear and damage.

### Packaging & Ordering Information

**Table 4.5 Chisel Paste**

Packaging	Part No.
Case of 10 cartridges*	574430
Case of 30 cartridges*	574431
Bucket, 35# (5 gallons)	676698
Keg, 120# (15 gallons)	679968

\* 14 oz. cartridge fits standard grease gun

5.0 Service Kits

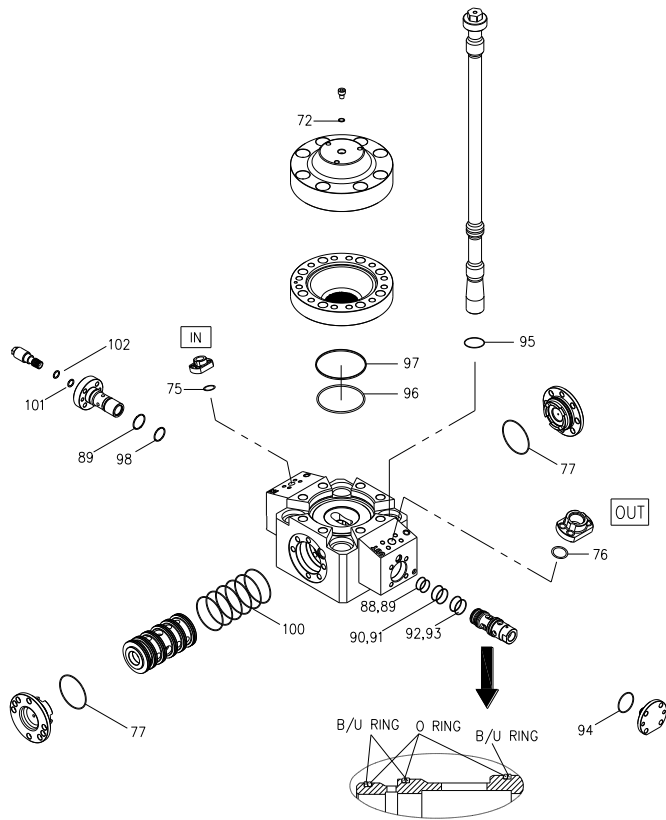


Fig. 5-1a

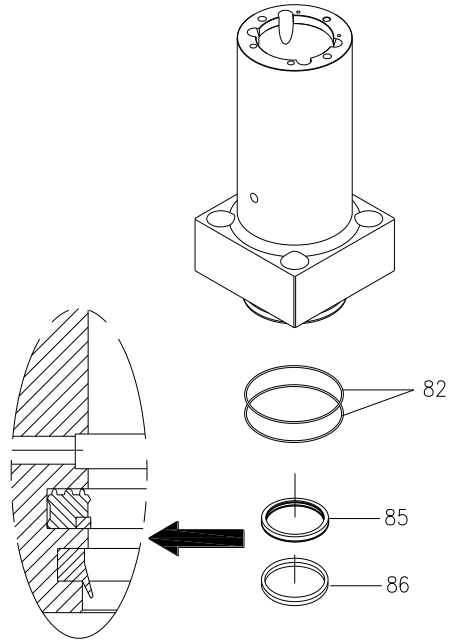


Fig. 5-1c

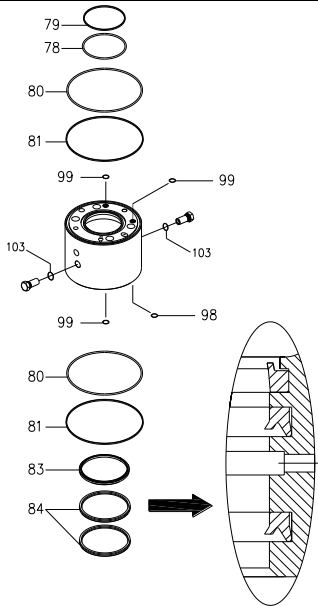


Fig. 5-1b

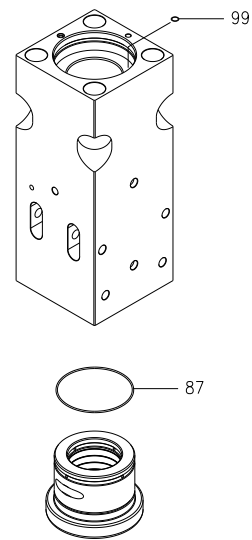


Fig. 5-1d

Fig 5-1a, b, c, d - Seal Set



Refer to Manual 575290 for proper assembly of parts.

**5.0 Service Kits – [cont'd]****Table 5.1 Seal Set**

Item	Description	Part No.	Qty	Remarks / Specifications
---	<b>Seal Set</b>	<b>575134</b>	<b>1 SET</b>	<b>Set includes all items in Table 5.1</b>
72	U-sit Ring	676201	1	
75	O-Ring	677977	1	
76	O-Ring	659275	1	
77	O-Ring	571696	2	
78	O-Ring	572360	1	
79	Back-up Ring	573142	1	
80	O-Ring	B4007350	2	
81	Back-up Ring	573144	2	
82	O-Ring	573145	2	
83	Wiper	573146	1	
84	U-Packing	573147	2	
85	Seal	573148	1	
86	Wiper	573149	1	
87	O-Ring	571695	1	
88	Back-up Ring	101788	1	
89	O-Ring	100109	2	
90	O-Ring	676203	1	
91	Back-up Ring	676205	1	
92	O-Ring	100107	1	
93	Back-up Ring	571705	1	
94	O-Ring	676248	1	
95	O-Ring	B5007250	4	
96	O-Ring	571699	1	
97	Back-up Ring	571706	1	
98	O-Ring	676251	1	
99	O-Ring	571004	5	
100	O-Ring	571693	6	
101	O-Ring	676200	1	
102	Back-up Ring	B3206940	1	
103	O-Ring	676209	2	
---	Thread Lube 2 oz.	676927	1	Follow application instructions

**IMPORTANT**

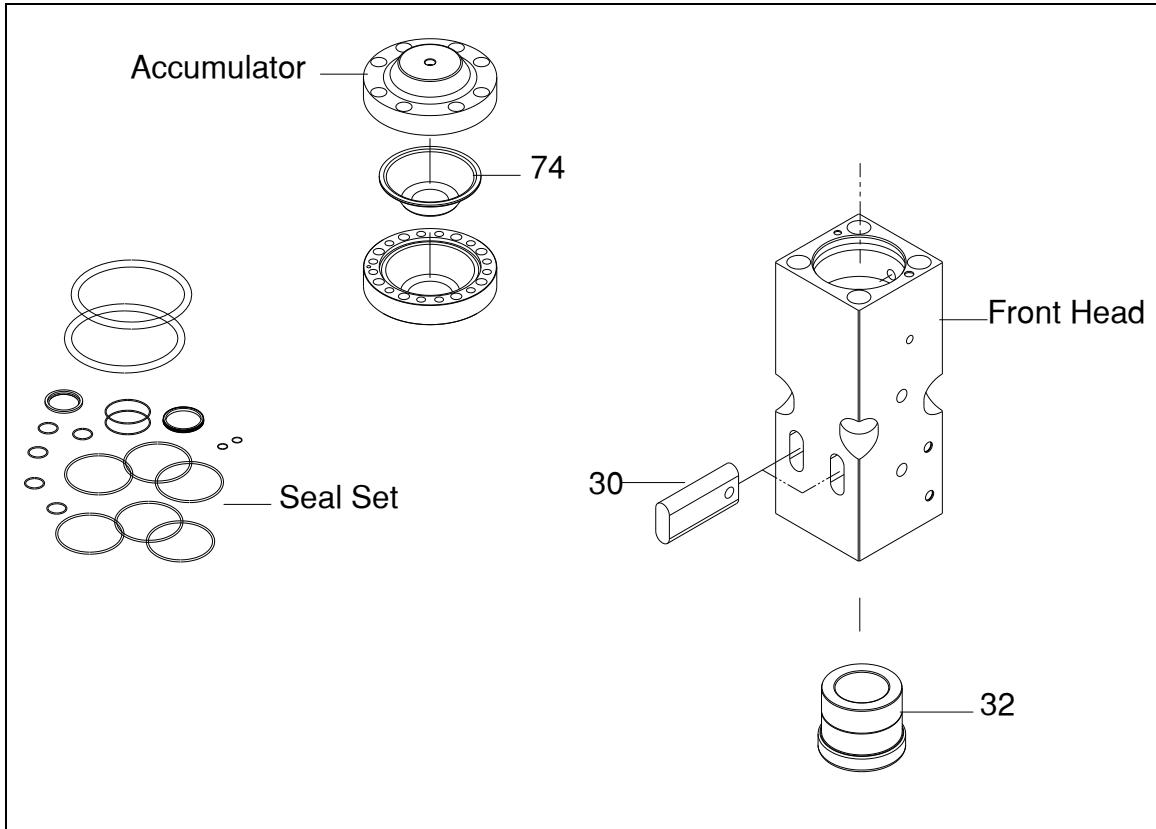
Lubricant provided in seal set is for side rod threads. DO NOT apply to seals!

**5.0 Service Kits – [cont'd]**

**Tune-Up Kit**

Tune-up kits restore performance and maintain the reliability of the breaker by replacing common wear items.

The Tune-up kit includes a full set of o-rings and seals, accumulator membrane, lower tool bushing and tool retaining pin.



**Fig. 5-2 Tune-up Kit**

**Table 5.2 Tune-Up Kit**

Item	Description	Part No.	Qty	Remarks / Specifications
---	<b>Tune-Up Kit</b>	<b>574979</b>	<b>1-Kit</b>	<b>Kit includes items in Table 5.1 &amp; 5.2</b>
---	Seal Set	575134	1	
30	Tool Pin	B5006340-02	2	
32	Lower Tool Bushing	B5006360	1	
74	Accumulator Membrane	573141	1	

5.0 Service Kits – [cont'd]

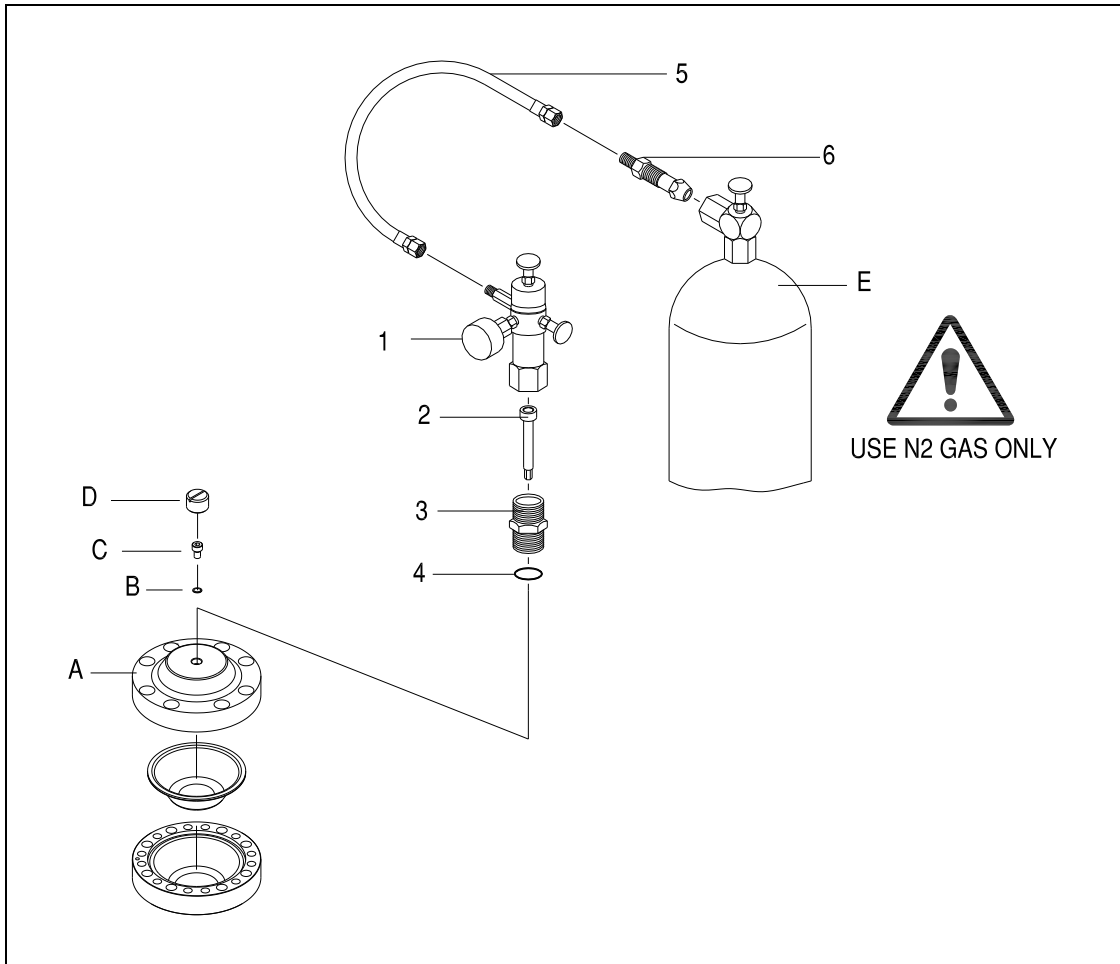


Fig. 5-3 N2 Gas Charge Kit

Table 5.3 N2 Gas Charge Kit

Item	Part No.	Description	Qty	Remarks / Specifications	
---	<b>570071</b>	<b>N2 Gas Charge Kit</b>	<b>1-Kit</b>	<b>Kit includes 1,2,3,4,5,6</b>	
1	100527	Charge Valve & Gauge	1	Includes 2-6 and storage case	
2	40601	Socket Bolt	1		
3	R101635	Adaptor	1		
4	901135	O-ring	1		
5	5 & 6 Not Sold Separately	Hose	1		8 Ft. [2.5 M]
6		Adapter for N2 Gas Bottle	1		
A,B,C, D,E	---	Accumulator, U-sit ring, Bolt, Cap, N2 Gas Bottle	---	A,B,C,D,E shown for reference only. These items are not included in charge kit	



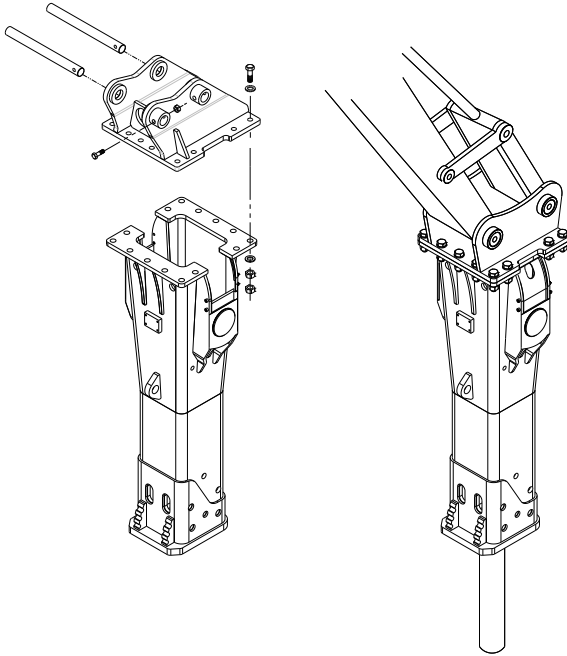
For your safety, read, understand and follow all instructions given in the Operation and Maintenance Manual 575290 for the safe and proper use of this tool.



## 6.0 Mounting Information

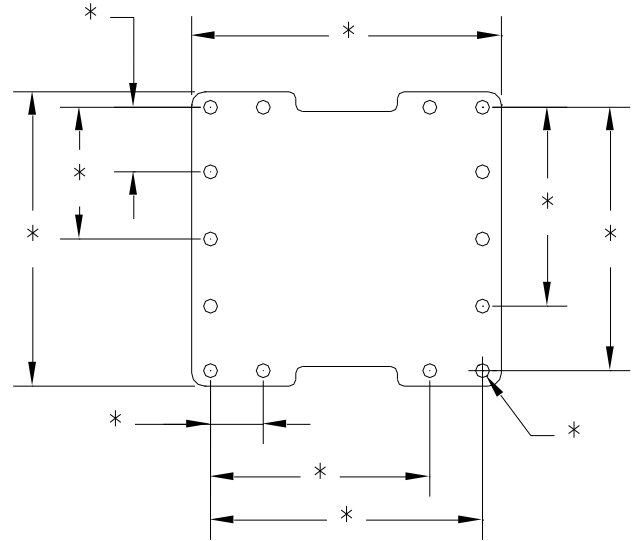
### 6.1 Mounting Brackets

A mounting bracket is required to attach the Allied Breaker to a carrier. Allied offers an array of mounting brackets to fit virtually any carrier, including those equipped with quick mounting couplers.



**Fig. 6-1 Pin-on Type Mounting Bracket - Typical**

Refer to Figure 6-2. Located at the top of the housing is the connection plate for the mounting bracket. The thickness of the connection plate as well as other dimensions, including the quantity, diameter and spacing of the boltholes will vary between breaker models.



**Fig. 6-2 Connection Plate on Housing**

Refer to Table 6.1. "Family" identifies the connection plate used by the Allied mounting bracket. These same families are utilized to mount other Allied attachments, including the Ho-Pac®.

**Table 6.1 Mounting Family & Hardware**

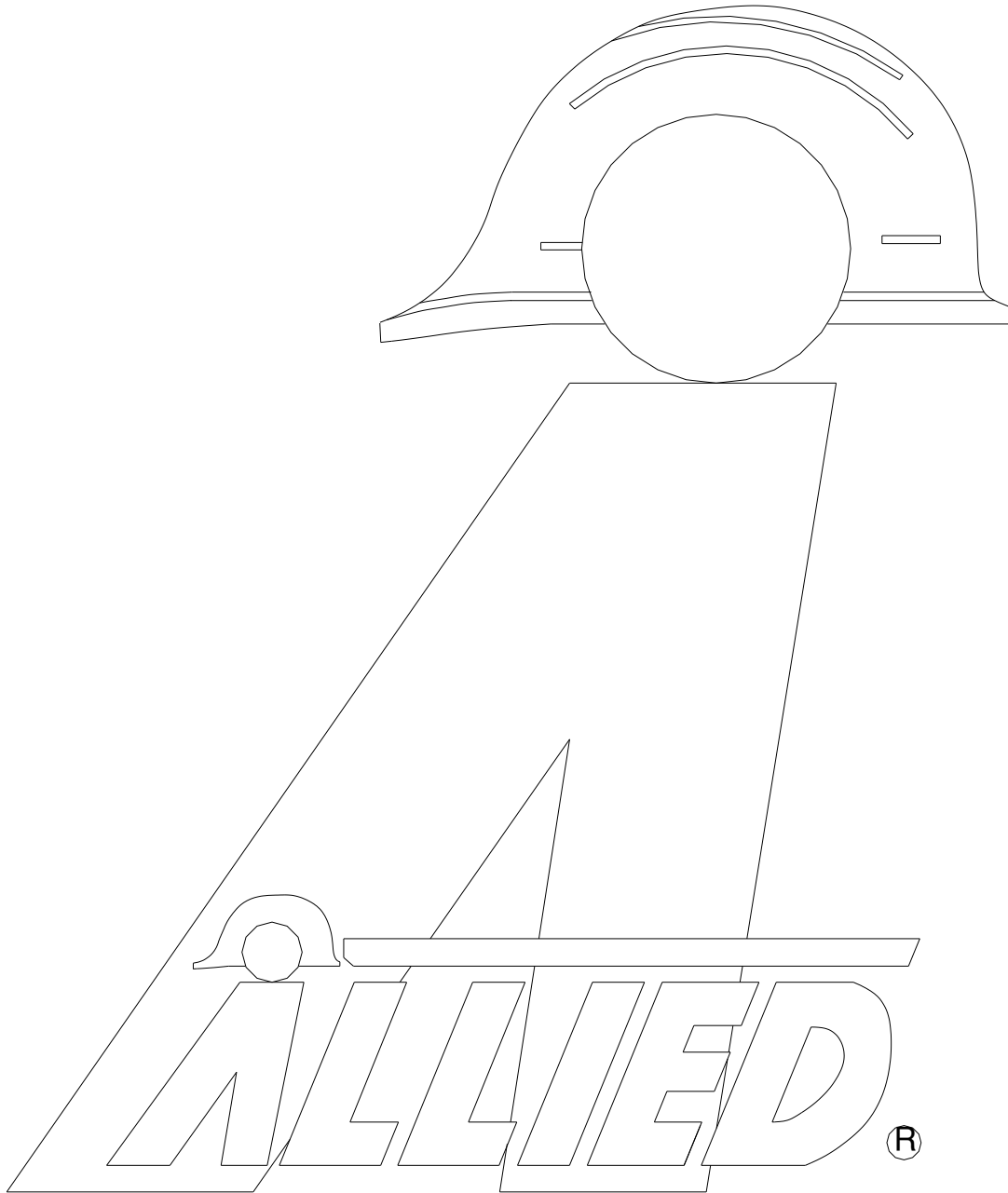
Model	Family	Bolt	FL Washer	LK Washer	Nut
AR70C, A75B	BR	90566 (12)	--- (0)	90597 (24)	91000 (12)
AR85B, AR95B	SR	572352 (10)	679422 (20)	571027 (10)	572353 (10)
AR110B, AR110C, AR120B	MR	101765 (14)	901291 (28)	658529 (14)	90507 (14)
AR130B, AR140B	LR8	101765 (14)	901291 (28)	658529 (14)	90507 (14)
AR160C, AR170C, AR175	LR9	573167 (14)	573029 (28)	573028 (14)	90519 (14)
AR180C	LR10	573030 (14)	573029 (28)	573028 (14)	90519 (14)



For your safety, read, understand and follow all instructions given in the Operation and Maintenance Manual 575290 for the proper tightening torque.







**ALLIED**<sup>®</sup>  
Construction Products, LLC

3900 Kelley Avenue, Cleveland, Ohio 44114  
Tel: 216-431-2600 Fax: 216-431-2601  
e-mail: [Sales@AlliedCP.com](mailto:Sales@AlliedCP.com)  
website: <http://www.AlliedCP.com>