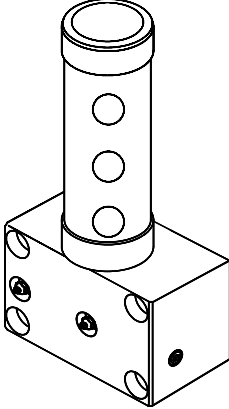
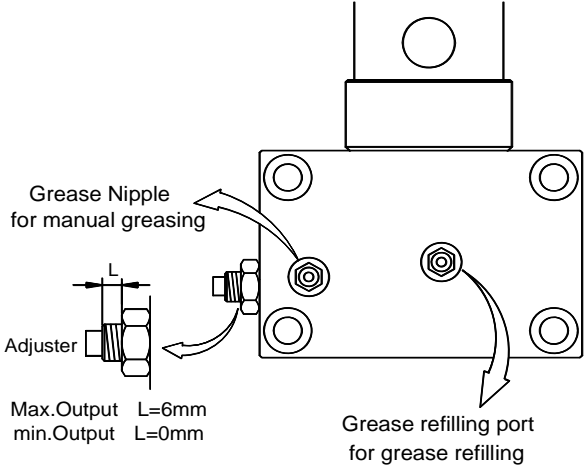
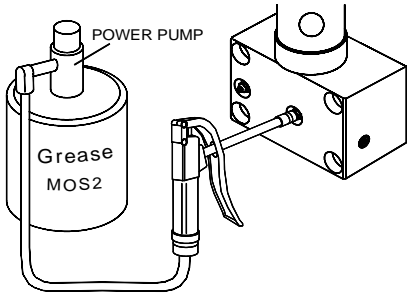
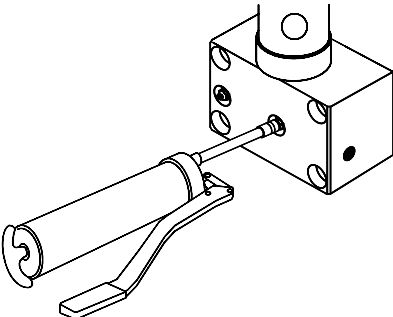
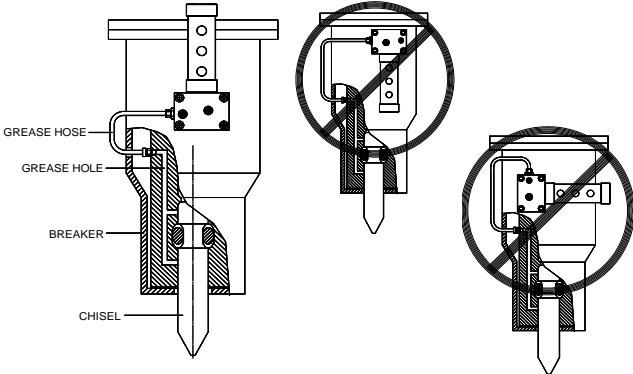
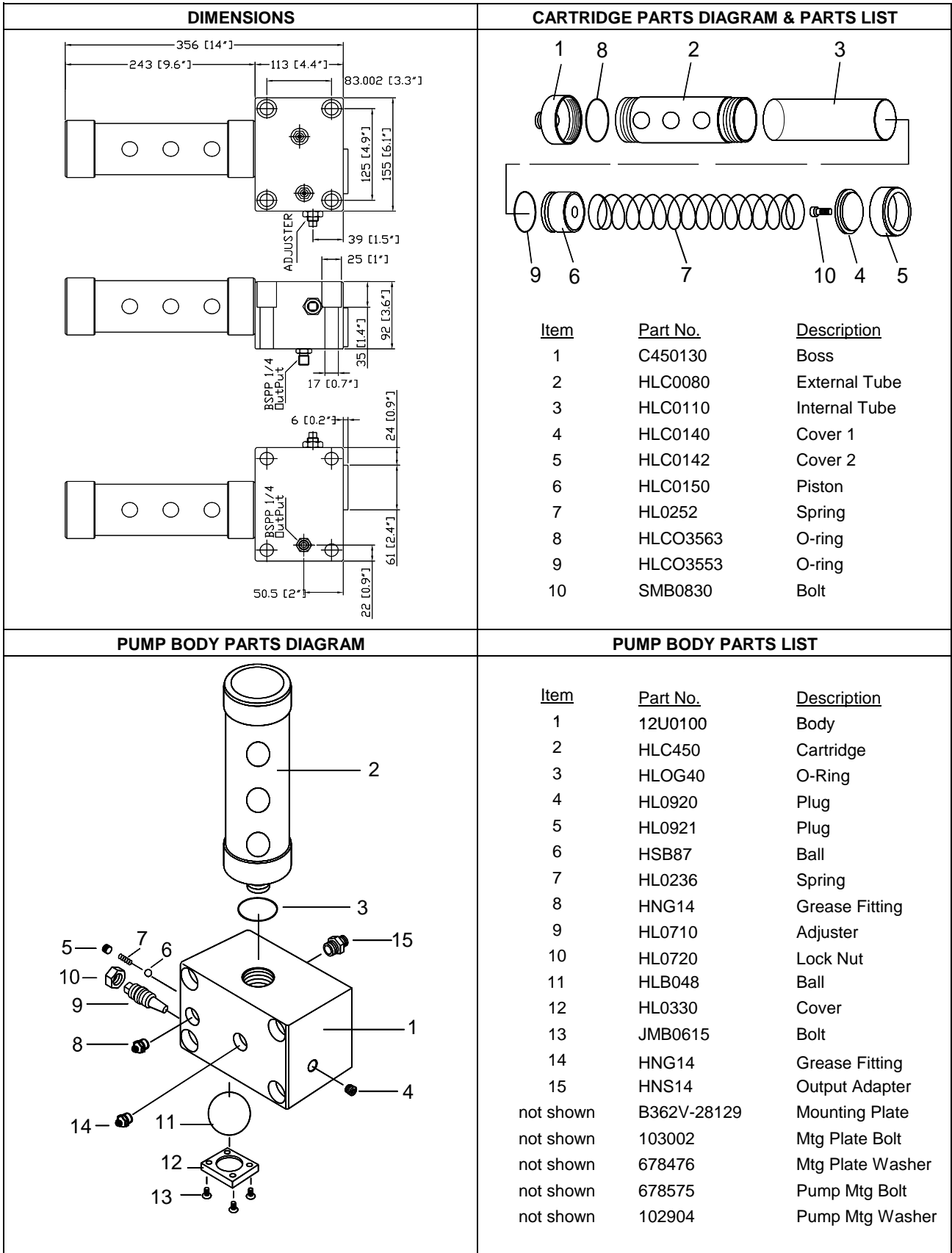


ALLIED CONSTRUCTION PRODUCTS, LLC

BreakerLube Part No. 574487

SPECIFICATIONS	ADJUSTMENT & MANUAL LUBRICATION
<div style="text-align: center;">  </div> <p>Output Pressure Approx. 725 psi (50 bar)</p> <p>Cartridge Capacity 15 oz. (450 ml)</p> <p>Weight w/o grease 12 lbs. (5.3 kg)</p> <p>Output Port 1/4" BSPP</p> <p>Recommended Grease Allied Chisel Paste or high quality, petroleum based grease with molybdenum disulfide.</p> <p>Operating Temperature Range 15F to 120F (-10C to 50C)</p>	<div style="text-align: center;">  </div> <p>IMPORTANT</p> <p>Manually lubricate the breaker through the manual greasing port prior to breaker operation if:</p> <ul style="list-style-type: none"> * The breaker has not been used in the last 2 months. * The bushings or tool were replaced. * The breaker was serviced.
CHISEL PASTE REFILL PROCEDURE	INSTALLATION
<div style="display: flex; align-items: center;"> <div style="flex: 1;">  </div> <div style="flex: 1; padding-left: 20px;"> <p>The lubricator cartridge is easily refilled without removing the cartridge with either a powered grease system or a manual grease gun.</p> </div> </div> <p>Once the cartridge is completely filled to the fill line on cartridge, a internal relief valve diverts excess grease to the hammer.</p> <div style="text-align: center;">  </div>	<div style="text-align: center;">  </div> <p>IMPORTANT</p> <ul style="list-style-type: none"> * Lubricator must to be installed upright and parallel with the breaker chisel. * Mounting bolt torques must be maintained. Loose bolts may result in lubricator malfunction or serious damage. Mounting plate bolts (14mm): 136 ft-lb (185 N-m). Pump body bolts (16mm): 210 ft-lbs (285 N-m). * Lubricator cartridge must to be installed tightly into pump body. A loose cartridge may result in lubricator malfunction or serious damage.

ALLIED CONSTRUCTION PRODUCTS, LLC
BreakerLube Part No. 574487



IMPORTANT

Serious equipment damage may result if these procedures are not followed.

- When a new breaker tool is installed, apply a liberal amount of lubricate to the shank of the breaker tool before inserting into front head.
- The same procedure applies to breaker tools that have been wiped clean for inspection.
- This lube pump provides a semi-continuous flow of grease to the breaker tool and bushings. It dispenses one shot of grease each time the unit is pulsated. The volume of grease delivered by this pump is easily adjusted. By design, the volume of grease produced from this pump is relatively low. The volume generated is efficient to replenish the amount consumed during normal breaker operation. However, it must be emphasized that these pumps are incapable of producing enough volume should the tool be inserted dry or if the bushings were wiped clean for inspection. In these instances, it is imperative that all surfaces, including the tool shank, tool retainer and bushings be pre-lubricated prior to installation.
- Inadequate lubrication, even for a short time, will result in rapid deterioration of the tool and bushing. The cartridge must be replenished **BEFORE** it is empty. If not, air pockets will form in the pump and delivery lines. The formation of air pockets will disrupt the flow of lubrication to the tool and bushing. Air pockets are time-consuming to purge. Replenishing the cartridge through the grease nipple (located on the pump housing) minimizes air pockets. When this method is followed, it is not necessary to prime or bleed air from the pump or lines.
- Contaminated grease can cause pump failure. Replenish cartridge through grease nipple only.

IMPORTANT

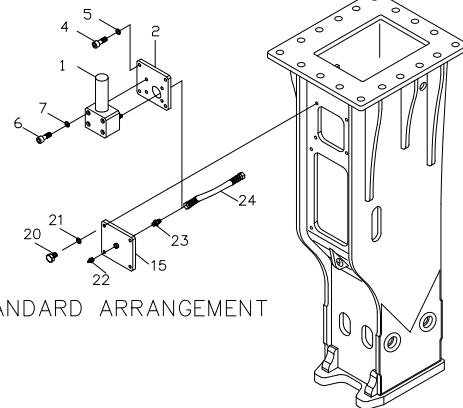
Regularly check that lubricant is reaching the tool. The shank of the tool must remain wet with lubricant at all times when working.

If hoses are replaced or pumped dry, normal pumping will take too long to recover. Purge air from lines as follows:

1. Disconnect lube hose at hammer.
2. Attach grease gun to lube fitting on pump. (Be sure to attach to the lube fitting for manual greasing).
3. Pump until grease flows from hammer end of hose. Dispose of used lubricants in accordance with local environmental laws.
4. Re-attach hose to hammer.

Installation kit, 574487, includes Lube Pump, mounting plate, adapter and hardware. Use hose (#24) supplied with hammer.

OPTIONAL BREAKERLUBE

**IMPORTANT**

At no time is it permissible to lubricate the breaker without contact pressure applied to the breaker tool. Serious equipment damage may result if proper procedures are not followed. Conventional greasing with a standard hand-operated or power-assisted grease gun requires these very important actions to be followed before lubricating:

1. Stand the breaker upright and
2. Press tool firmly into the ground.

Additional Information



- Read the manual
- Refer to the manual for further details
- Procedures are explained in the manual

The Operation & Maintenance Manual, 574603, outlines important information for the safe and proper use of the Hy-Ram Breaker. It also provides:

- Technical specifications
- Lubrication of tool & bushing
- Instructions for changing the tool
- Instructions for charging back head
- Impact blow adjustment
- Inspection & maintenance
- Troubleshooting
- Lifting, transporting & storage

Required Daily Inspections

- Before starting, visually inspect all hoses, fittings and fasteners for wear and tightness.
- Check lubricant level. The grease cartridge should be replenished when lubricant is no longer visible through the windows in the external tube.

IMPORTANT

Avoid damage to tool and bushings. Do not operate hammer without grease. Replenish the empty cartridge immediately. A hand lever grease gun can be use to accomplish this.

IMPORTANT

Lubrication lines must be completely filled with lubricant before operation. Purge all air pockets. Fill grease line at grease nipple located on grease pump. Use a hand grease gun to accomplish this task.

Chisel Paste

Part No.	Packaging / Ordering Information
574430	Case of 10 cartridges ¹⁾
574431	Case of 30 cartridges ¹⁾
676698	Bucket, 35#
679968	Keg, 120#

¹⁾ 14 oz cartridge fits standard grease gun