

# Hydraulic Installation Kits

Kits for excavators and loader/backhoes



# Auxiliary/Priority Hydraulic Installation swing/tile, shear

For over 65 years, Allied Construction Products, LLC has developed high performance attachments that are legendary in the construction and demolition industries. Names like Ho-Ram, Hy-Ram®, Ho-Pac®, Sandvik (Rammer) and Pedestal Breaker System™ are names that represent:

- Simple, proven design
- Reliable performance
- Quality replacement parts

To properly match your attachment with your carrier and maintain that reliable performance requires a properly designed Hydraulic Installation Kit. Allied pioneered and developed the concept of Hydraulic Installation Kits more than 35 years ago. Today, Allied has over 2,500 customized Hydraulic Installations Kits for virtually every excavator and loader/backhoe. Allied's Hydraulic Installation Kits are complete. They look right, work right and are easy to install.

## Allied Hydraulic Installation Kits feature:

- Highest quality hydraulic components
- Professional appearance
- Complete, illustrated installation manual
- Descriptive bill of materials
- Variable flow selector priority control valves
- Hoses meet or exceed 100R9/100R12/100R13 SAE specifications
- Durable nylon or protective cover on hoses subject to chafing
- Custom formed heavy-walled seamless tubing
- Heavy-duty, weld-on tube end fittings
- Heavy-duty clamping systems
- Shutoff ball valves or hydraulic quick disconnects at attachment
- Working ranges for 3000 psi and 5000 psi requirements

## How do you select the right Hydraulic Installation Kit?

A Hydraulic Installation Kit is much more than a box of parts. It is an integrated assembly with

thorough and accurate installation instructions. There are four factors to consider when properly choosing the right Hydraulic Installation Kit:

- Collect carrier information
- Consider the work to be performed
- Plan ahead for future attachments
- Determine type of mounting needed

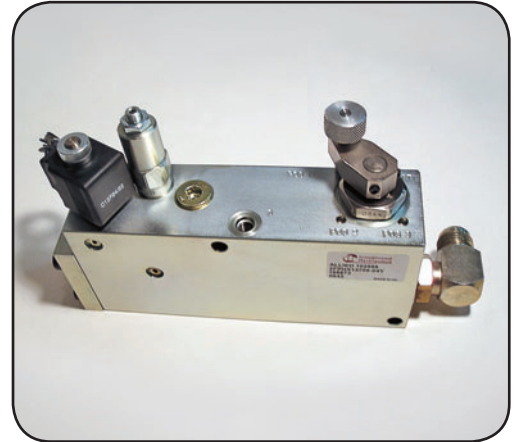
For carrier information, you will need to provide the manufacturer, model number, series or dash number, serial number and boom/arm sizes.

When you consider the work to be performed, always consider what may best suit the customer's needs in the future projects. Breaking hard rock on a daily basis may dictate the need for the largest compatible breaker, while lighter material like concrete may be broken with a hammer having a much lower foot pound energy class.

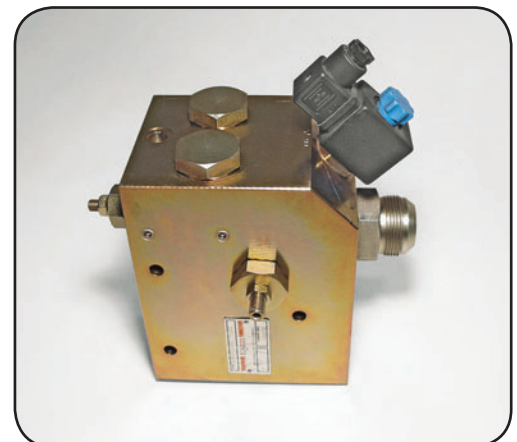
When planning ahead for future projects and attachments, don't let the Hydraulic Installation Kit you order today limit your attachment choices for tomorrow. If the future may dictate a larger attachment, choose a Hydraulic Installation Kit that can accommodate it (larger lines will eliminate the need to re-plumb later).

Regarding type of mounting, determine if a mounting coupler is needed. Quick-attach couplers need to have a specific pin size and spacing on the "mating" attachment. Specify the type of coupler to be used when ordering a mounting kit. Mounting kits include the Universal Mounting Kit, OEM Mounting Bracket, LTS/MDS Mounting Components and Variable Mounting System.

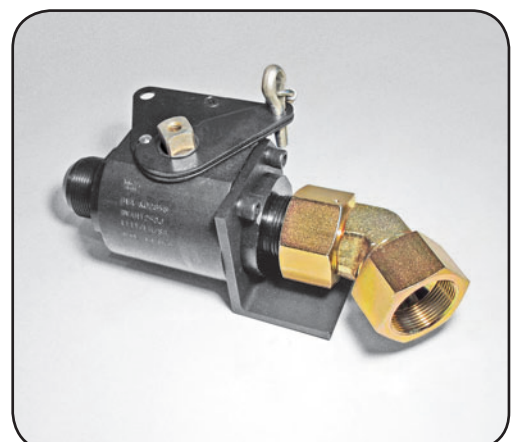
You need a Hydraulic Installation Kit rated for severe-duty that will stand up to the harshest job site conditions. Take a look at some of our components and see why our Hydraulic Installation Kits are the toughest in the industry.



AC 40 Valve



2 Pump Valve



Ball Valve Assembly



# tion Kits for breakers, compactors, ars and thumbs.



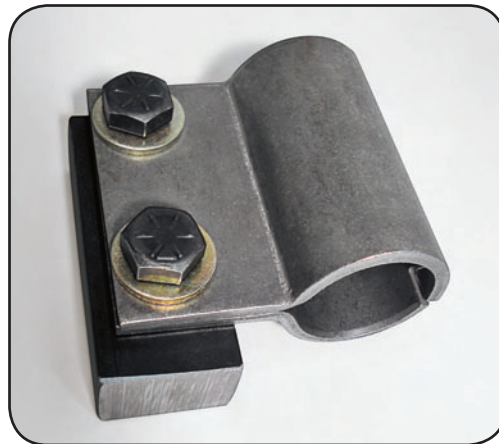
AC 75 Valve



XL 140 Valve



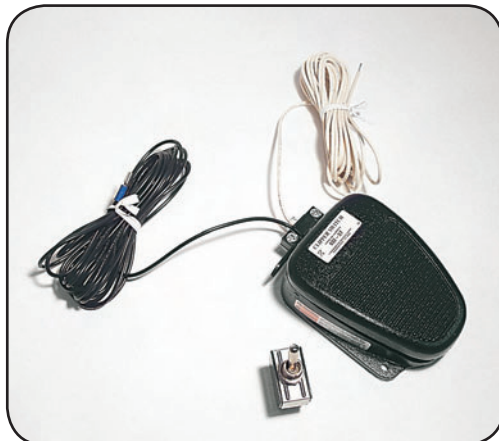
Tube Kit



Tube Clamp Assembly



Relief Valve



Foot Switch Package

# Priority Valve Specifications

Kit valves for excavators and loader/backhoes

## AC 40 Valve

Maximum System Pressure: 5075 psi (350 bar)  
Maximum Inlet Flow: 40 gpm (150 lpm)  
Maximum Control Flow: 32 gpm (121 lpm)

## AC 75 Valve

Maximum System Pressure: 5075 psi (350 bar)  
Maximum Inlet Flow: 75 gpm (150 lpm)  
Maximum Control Flow: 63 gpm (121 lpm)

## XL 140 Valve

Maximum System Pressure: 5000 psi (350 bar)  
Maximum Inlet Flow: 140 gpm (530 lpm)  
Maximum Control Flow: 130 gpm (492 lpm)

## 2P 26-40 Valve

Maximum System Pressure: 5100 psi (352 bar)  
Maximum Inlet Flow: 26 gpm x 2 (98 lpm x 2)  
Maximum Control Flow: 40 gpm (151 lpm)

## 2P 49-66 Valve

Maximum System Pressure: 5100 psi (352 bar)  
Maximum Inlet Flow: 49 gpm x 2 (185 lpm x 2)  
Maximum Control Flow: 66 gpm (250 lpm)

## 2P 76-85 Valve

Maximum System Pressure: 5100 psi (352 bar)  
Maximum Inlet Flow: 76 gpm x 2 (289 lpm x 2)  
Maximum Control Flow: 85 gpm (322 lpm)

For sales and service, contact your Allied Distributor:



3900 Kelley Avenue, Cleveland, Ohio 44114  
Tel: 216-431-2600 Fax: 216-431-2601  
e-mail: [Sales@AlliedCP.com](mailto:Sales@AlliedCP.com)  
website: <http://www.AlliedCP.com>