

**Ram  
mer**®

**Mobile Breaker Systems**



**RAMMER HITS HARDER**



# Primary Benefits

- **Blasting negatives eliminated**
- **Oversize broken at source**
- **Continuous operation**
- **Draw point availability**
- **Mucking resumes quickly**
- **No handling/rehandling of oversize**
- **Productivity**
- **Utilizing existing equipment reduces capital investment**
- **Safety**



# Rammer Mobile Breaker (HBM&S)

The implementation of a mobile breaker philosophy versus secondary blasting has had some significant positive effects on the operations in both safety and cost. The mobile breaker has significantly reduced the need to blast oversized muck during the shift.

## **Crushers:**

A reduction in the amount of oversized muck reporting to the crushers has lowered the high cost of repairs, reduced blasting and contributed towards a cleaner and safer environment.

## **LHD Fleet:**

The utilization of the mobile rock breaker has resulted in the maintenance cost of this fleet remaining steady or dropping, in spite of the fleet age. The reduction in oversize has increased the LHD effectiveness in terms of tonnes/hr/km's being hauled.

## **Blasting:**

Secondary blasting during the shift has virtually been eliminated. Where a blast typically requires two - three people for action & guarding, the breaker only requires one operator. There is also no impact on crew productivity for those working in and around the oversize. As a result, one block hole has been retired and the requirement for a second unit has been reduced by 50%.

"Efficiencies gained through the process in the cycle times have been substantial, and contribute to the overall benefit of the operation through continuous workplace improvements. Loaders previously used to handle the oversized "Muck" are not being exposed to those damaging scenarios. This creates less maintenance cost, less damage and allows the Loaders (LHD) to be utilized for their specific purpose. The entire operation benefits by providing a safer environment and reducing the overall operating cost."

*Gerry Seymore, Maintenance Superintendent*

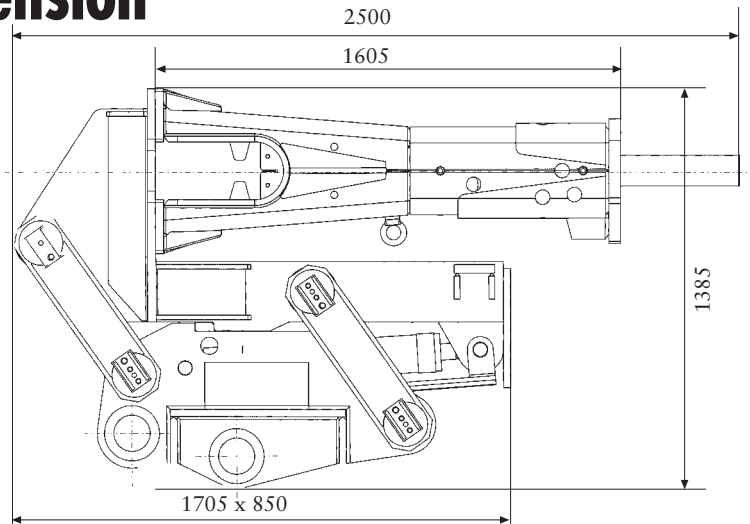




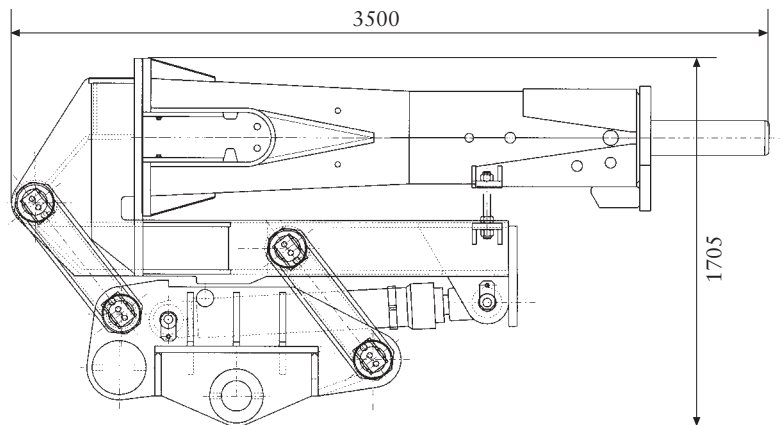
# Hammer - LHD Matching Guide

	Hammer	E 64	E 66	E 68	G 80N	G 90	G 100
	Impact Class	2,000	2,500	3,500	5,000	7,500	10,000
LHD Class	Unit Weight						
1-2 yard	3,000 – 15,000 lbs	●					
2-3 yard	5,000 – 28,000 lbs	●	●				
3-4 yard	28,000 – 37,000 lbs	●	●				
6 yard	37,000 – 57,000 lbs	●	●	●	●		
8 yard	57,000 – 75,000 lbs		●	●	●	●	●
9 yard	75,000 – 90,000 lbs					●	●

## Extension Carriage Dimension

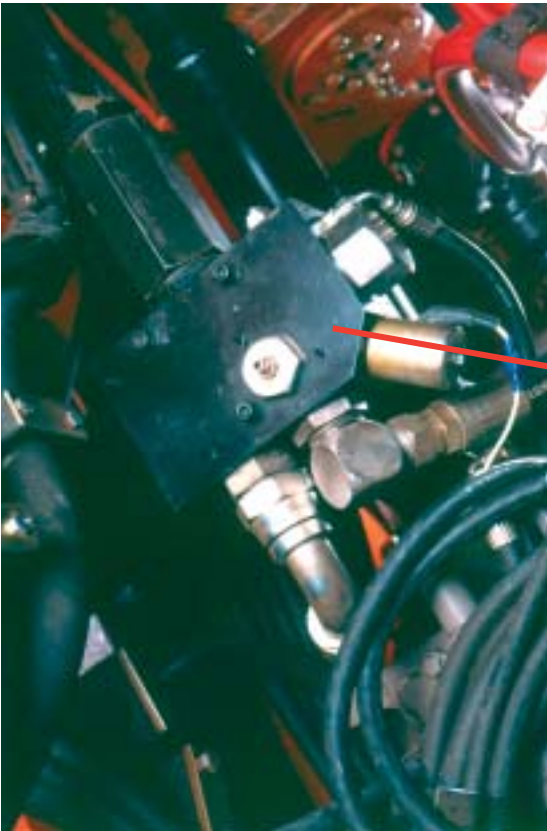


EC60 with Rammer E 64  
Total weight 2350 kg

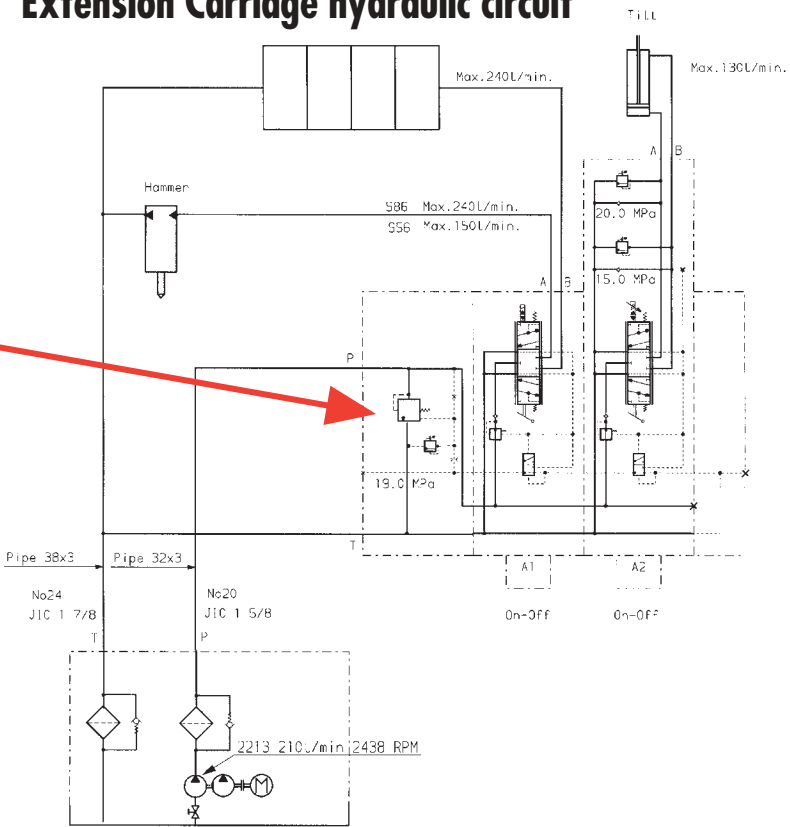


EC80 with Rammer G 90  
Total weight 6240 kg

# Operator's Compartment

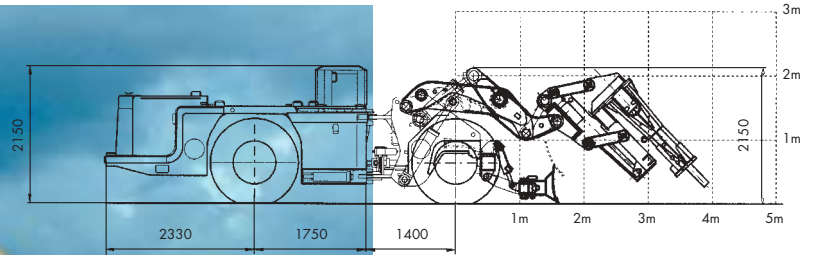
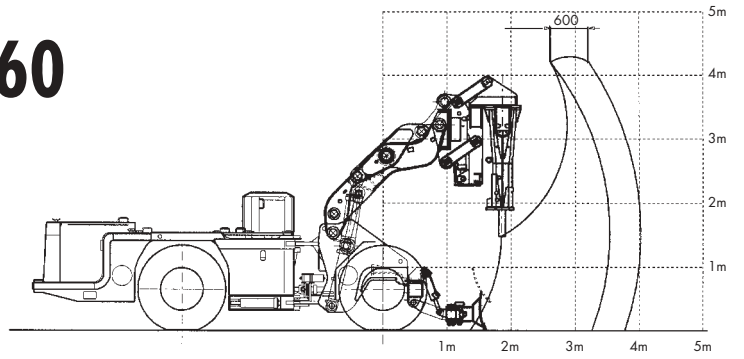


**Extension Carriage hydraulic circuit**



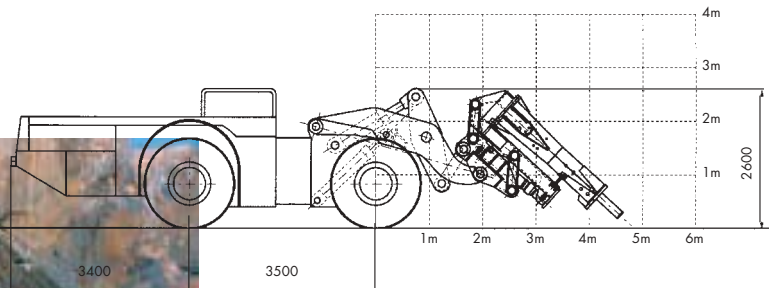
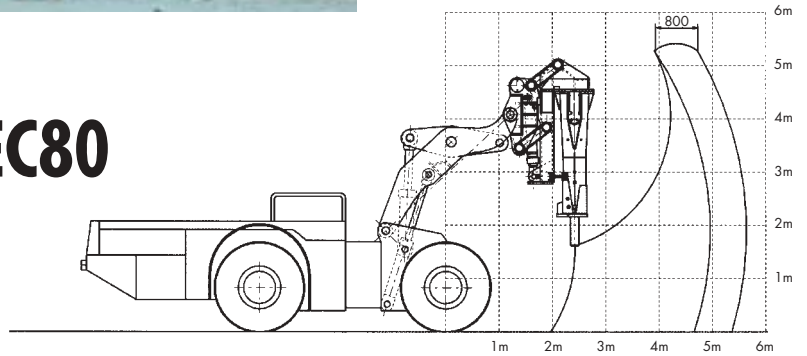
# Extension Carriage EC60

TORO 301 (3 1/2 yd.)



# Extension Carriage EC80

TORO 501 (8 yd.)





# Equipment Attach

- Quick Attach Systems (QDS)
- Remote Systems available
- Extension Carriage (Refer to Extension Carriage Dimension)



EJC 100 – 3 yd. Class

Rigid Mount Brackets

# Rammer®



## Underground Mining Customers

For *Parts Support*, contact the Customer Service Centre between 7:00 am to 6:30 pm (EST) at 1-800-717-7813 (English) or 1-800-717-7812 (French)

For *Warranty & Technical Support*, please call 1-800-598-1337 to speak to our bilingual representative

**Sandvik Tamrock Canada Inc.**  
**For all your Mining and Construction Equipment Needs**  
**Commitment, Innovation, Productivity, Service**

Sandvik Tamrock Canada Inc., 100 Magill Street  
Lively, Ontario, Canada P3Y 1K7  
Tel.: (705) 692-5881 • Fax: (705) 692-5313

*Drills • Loaders • Trucks • Drilling Tools • Demolition Equipment • Construction • Utility Vehicles*

**SANDVIK**

**RAMMER HITS HARDER**