

**PARTS MANUAL**

**PME68ENG.603**

**HYDRAULIC HAMMER**  
**RAMMER E 68**  
**RAMMER E 68 CITY**  
**RAMMER E 68 CITY-JET**

**Serial No.**

**68AAB0439-UP**

**68ADB0439-UP**

**68AEB0439-UP**

---

## TABLE OF CONTENTS

1. Housing unit E 68 . . . . .	4
2. Housing unit E 68 CITY . . . . .	6
3. Housing unit E 68 CITY-JET . . . . .	8
4. Accumulator E 68 . . . . .	10
5. Main valve E 68 . . . . .	11
6. Check valve E 68 . . . . .	12
7. Pressure control valve E 68 . . . . .	14
8. Tie rods E 68 . . . . .	16
9. Body parts E 68 . . . . .	18
10. Front head E 68 . . . . .	20
11. Lower tool bushing E 68 . . . . .	21
12. Seal set E 68 . . . . .	22

---

## GENUINE RAMMER SPARE PARTS

Rammer genuine spare parts are designed and manufactured by using the latest technological knowledge and engineering skills. Rammer spare parts are made of the best available materials with the most advanced manufacturing techniques.

It is important that you use only genuine Rammer spare parts, to ensure easy operation, maintenance and repair of the product. Please note that eventual warranty claims will be handled only if you have used genuine Rammer parts in your Rammer.

## LOCATION OF THE SERIAL NUMBER

It's important to make correct reference to the serial number of the product when ordering spare parts. Identification of serial number is the only proper means of maintaining and identifying parts for a specific product. The location of equipment serial number is pointed in "Operation and maintenance" manual.

## SPARE PART ORDERS

Quick spare part deliveries are secured by exact orders.

### Required information:

- Name of customer and contact person
  - Order number (when available)
  - Delivery address
  - Mode of delivery (air mail etc.)
  - Required delivery date
  - Invoicing address
  - Model and serial number of the product
  - Name, number and required amount of spare parts
-

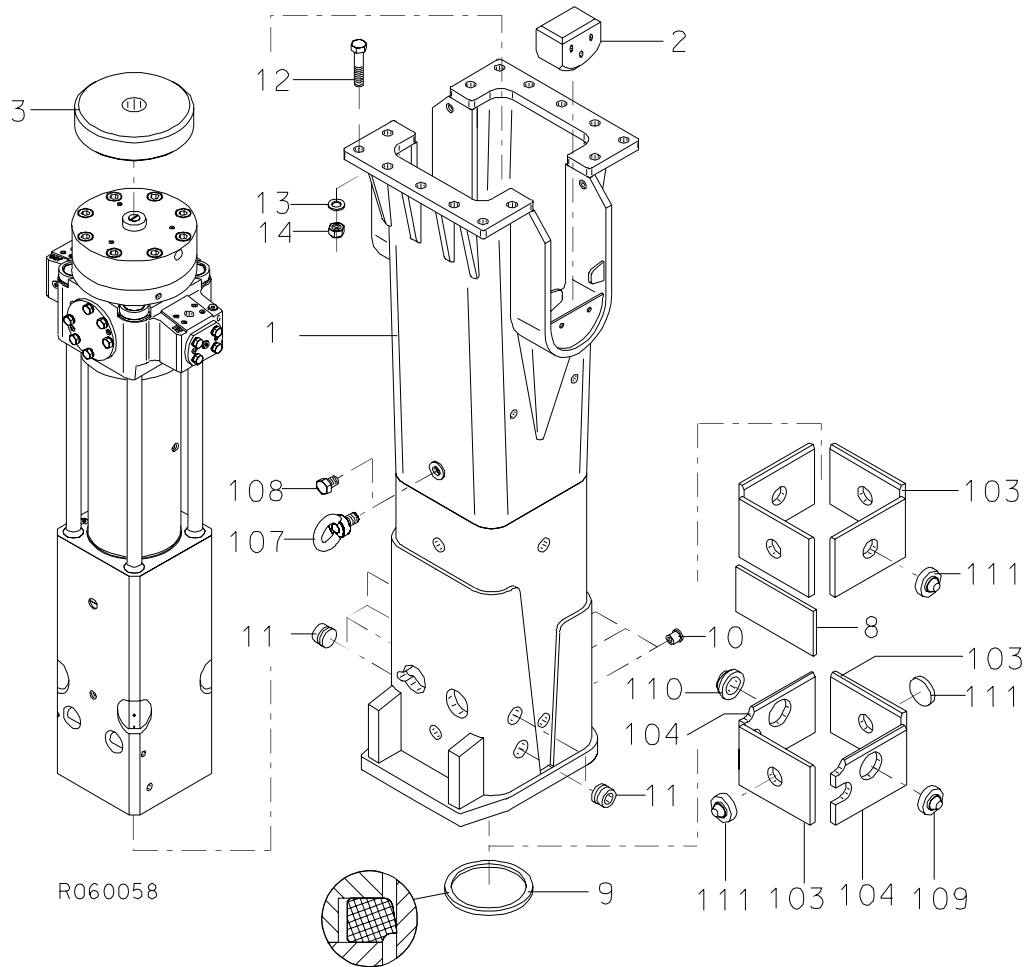
---

---

# **PARTS**

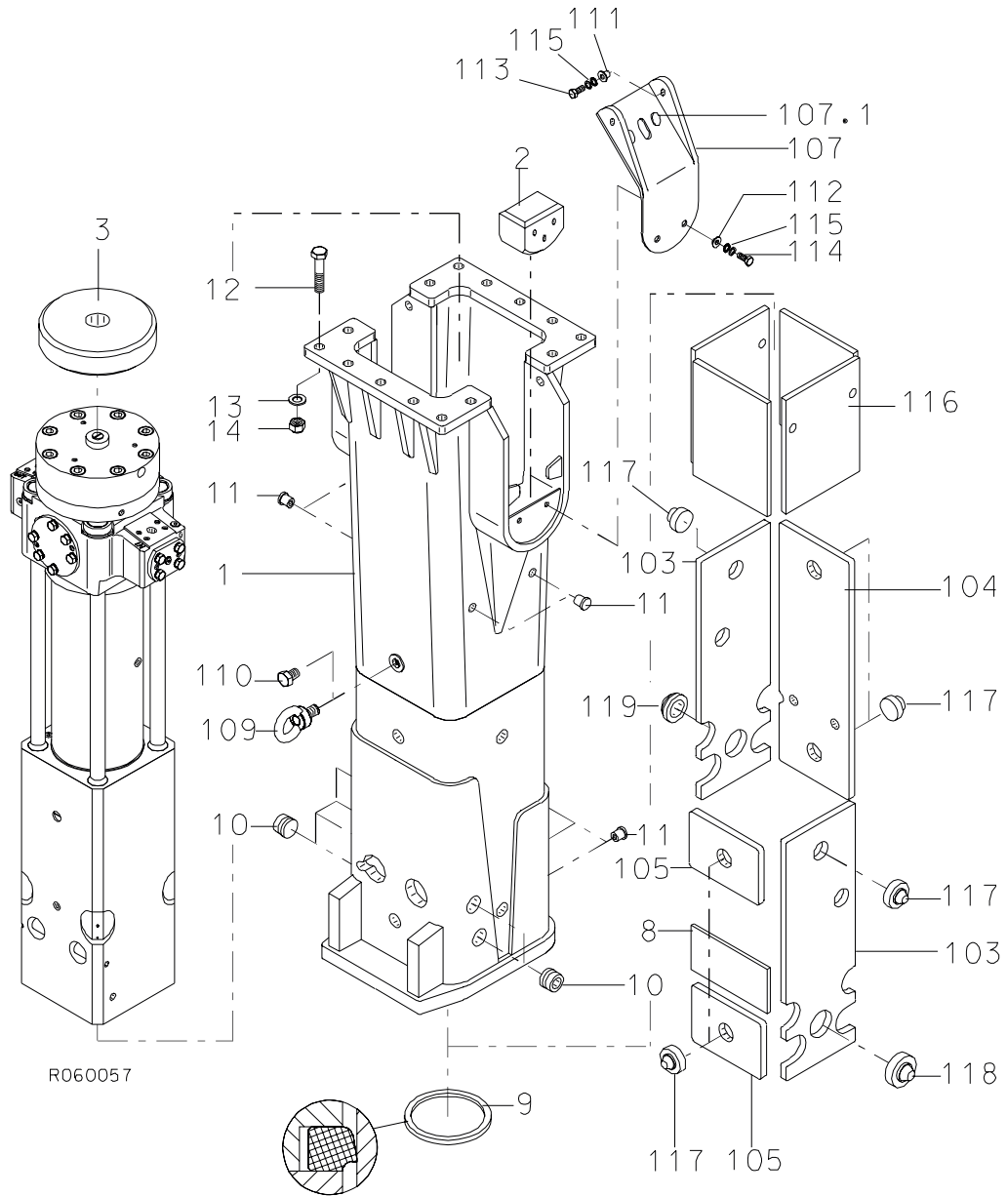
---

**1. HOUSING UNIT E 68**



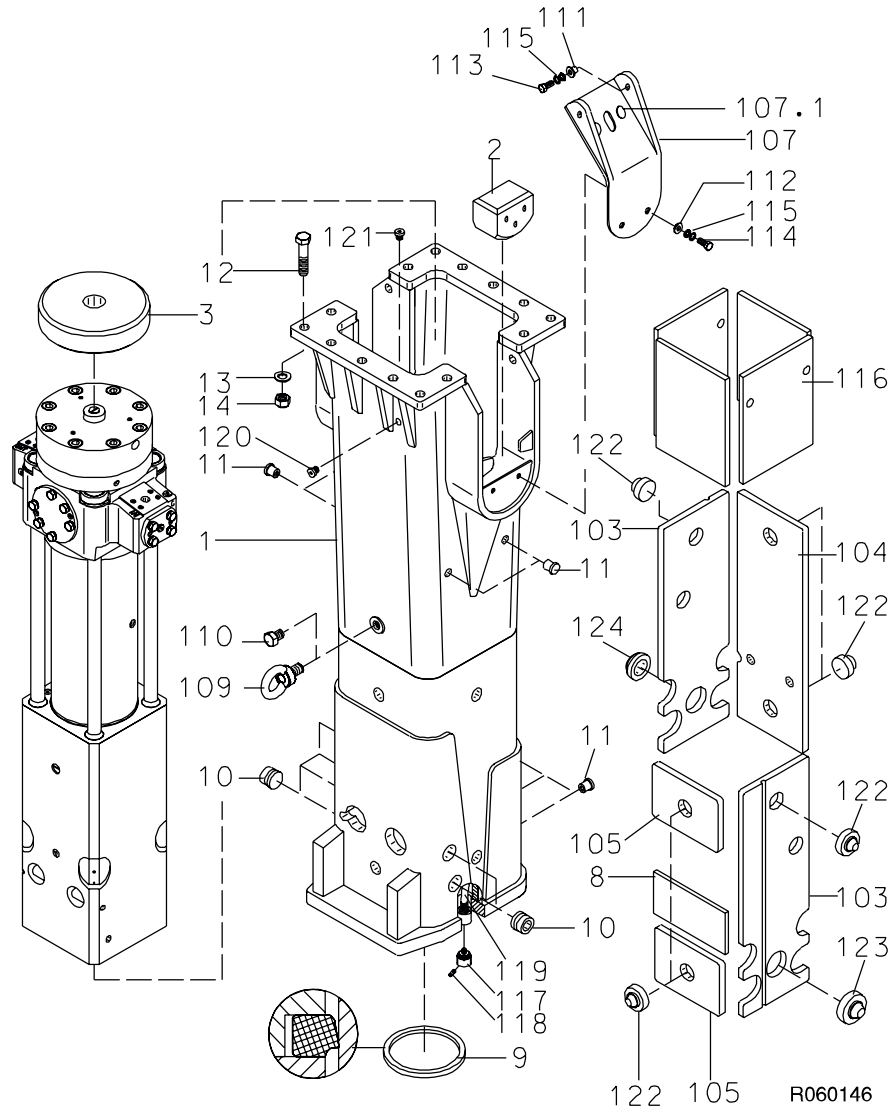
Item	Description	Part no.	Specification	Note	Qty
1	Housing (incl. parts 103-111)	104007			1
2	Pad	300954			2
3	Buffer	300953			1
8	Shield plate	102563			1
9	Seal	102143			1
10	Rubber plug	400566	D25		3
11	Rubber plug	400676	D50		6
12	Hex. screw	90589	M24x110-12.9 DIN 931		14
13	Washer	90511	25 DIN 6916		14
14	Lock nut	90507	M24-12 DIN 985		14
103	Wear plate	102454			6
104	Wear plate	102456			2
107	Lifting eye	90705	M30 DIN 580		1
108	Hex. screw	900026	M30x40-8.8 DIN 933		1
109	Pin	102445			1
110	Pin	102458			1
111	Pin	103994			6
Kit	Label set	104069			1

2. HOUSING UNIT E 68 CITY



Item	Description	Part no.	Specification	Note	Qty
1	Housing (incl. parts 103-119)	102825			1
2	Pad	300954			2
3	Buffer	300953			1
8	Shield plate	102563			1
9	Seal	102143			1
10	Rubber plug	400676	D50		6
11	Rubber plug	400566	D25		7
12	Hex. screw	90589	M24x110-12.9 DIN 931		14
13	Washer	90511	25 DIN 6916		14
14	Lock nut	90507	M24-12 DIN 985		14
103	Wear plate	103983			2
104	Wear plate	103982			1
105	Wear plate	103984			2
107	Shield plate (incl. part 107.1)	102982			2
107.1	Shield plug	103875			2
109	Lifting eye	90705	M30 DIN 580		1
110	Hex. screw	900026	M30x40-8.8 DIN 933		1
111	Middle bushing	102944			4
112	Middle bushing	102939			4
113	Hex. screw	91050	M12x40-8.8 DIN 933		4
114	Hex. screw	90513	M12x30-8.8 DIN 933		4
115	Lock washer	91012	M12 NORD-LOCK		8
116	Damper plate	102562			4
117	Pin	103994			6
118	Pin	102445			1
119	Pin	102458			1
Kit	Label set	104162			1

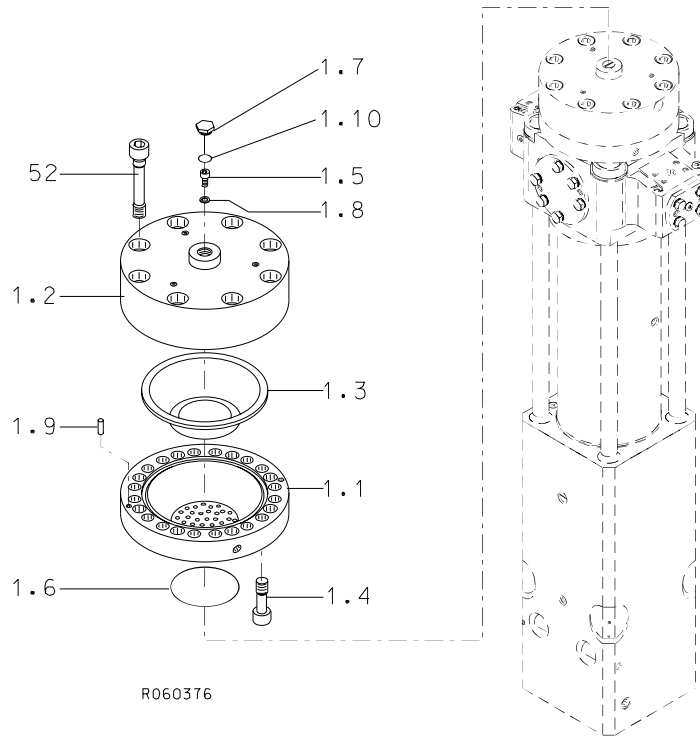
3. HOUSING UNIT E 68 CITY-JET





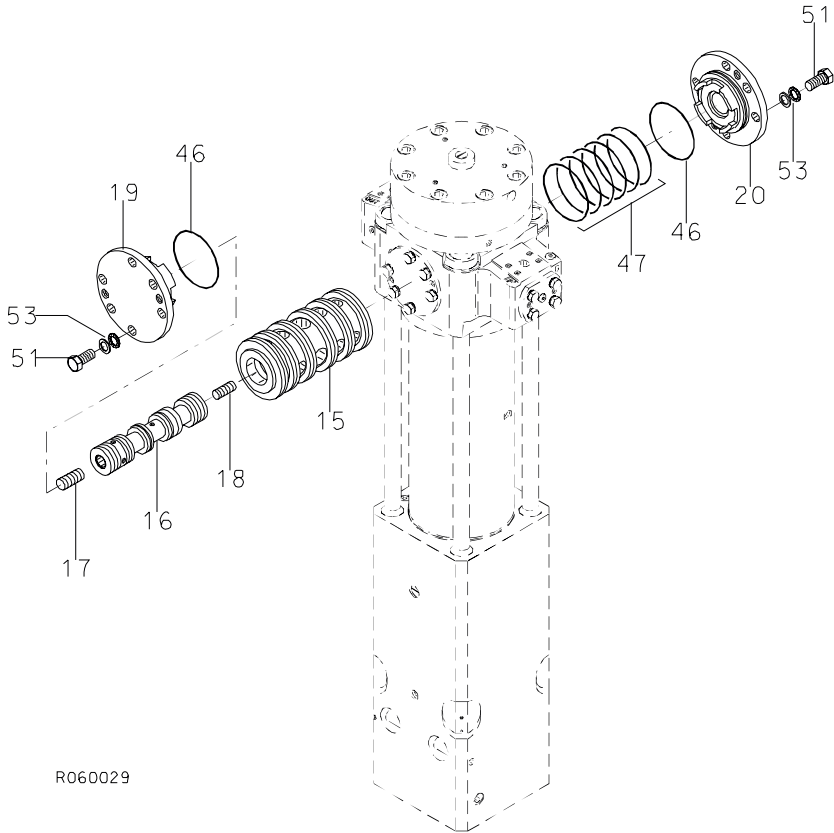
Item	Description	Part no.	Specification	Note	Qty
1	Housing (incl. parts 103-124)	104366			1
2	Pad	300954			2
3	Buffer	300953			1
8	Shield plate	102563			1
9	Seal	102143			1
10	Rubber plug	400676	D50		6
11	Rubber plug	400566	D25		7
12	Hex. screw	90589	M24x110-12.9 DIN 931		14
13	Washer	90511	25 DIN 6916		14
14	Lock nut	90507	M24-12 DIN 985		14
103	Wear plate	104373			2
104	Wear plate	103982			1
105	Wear plate	103984			2
107	Shield plate (incl. part 107.1)	102982			2
107.1	Shield plug	103875			2
109	Lifting eye	90705	M30 DIN 580		1
110	Hex. screw	900026	M30x40-8.8 DIN 933		1
111	Middle bushing	102944			4
112	Middle bushing	102939			4
113	Hex. screw	91050	M12x40-8.8 DIN 933		4
114	Hex. screw	90513	M12x30-8.8 DIN 933		4
115	Lock washer	91012	M12 NORD-LOCK		8
116	Damper plate	102560			4
117	Guide	103047			2
118	Nozzle	102783	SSCO B1/8-GG-SS5		2
119	Hose assembly	104377			2
120	Flange plug	90424	R1/2		1
121	Flange plug	90403	R1/4		1
122	Pin	103994			6
123	Pin	102445			1
124	Pin	102458			1
Kit	Label set	106134			1

**4. ACCUMULATOR E 68**



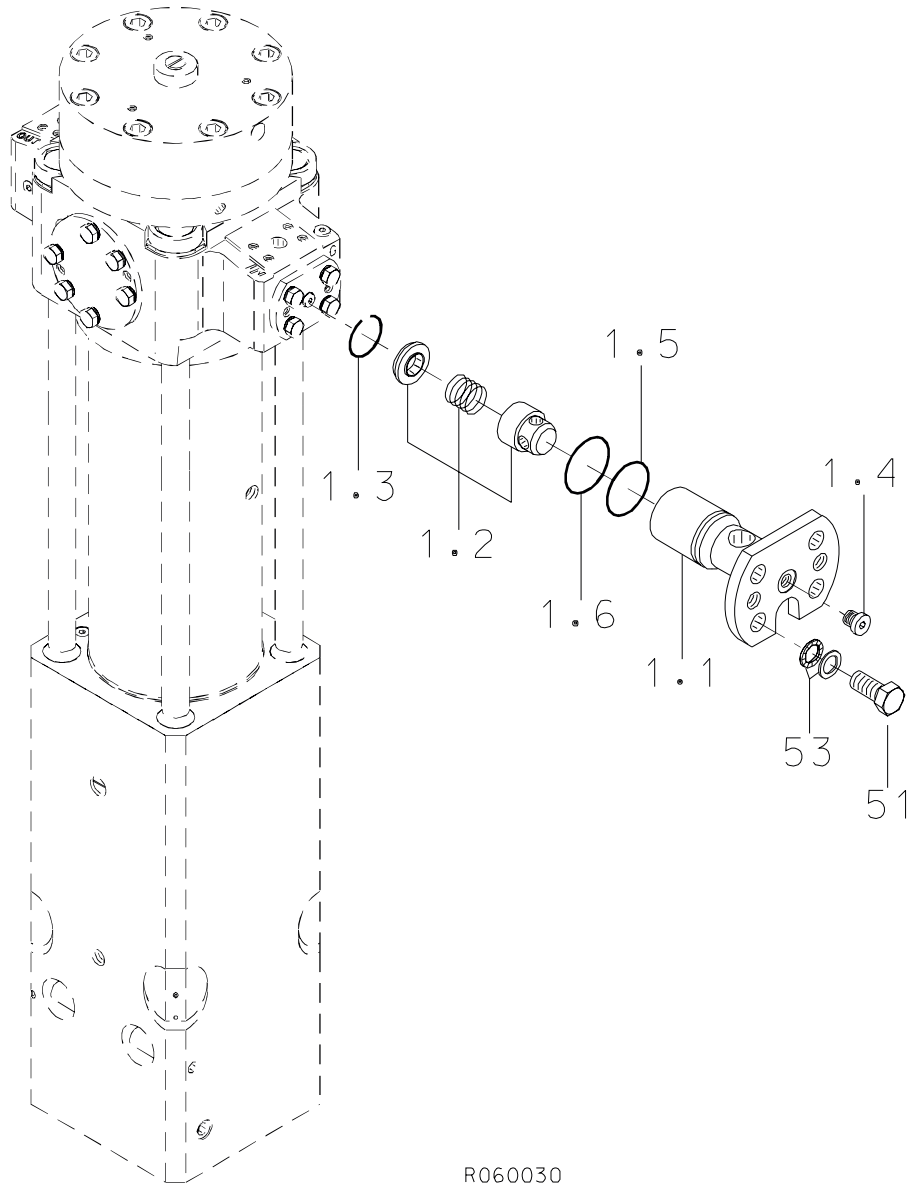
Item	Description	Part no.	Specification	Note	Qty
1	Accumulator (incl. parts 1.1-1.10)	300924			1
1.1	Accumulator bottom	100672			1
1.2	Accumulator cover	100673			1
1.3	Membrane	30211			1
1.4	Accumulator screw	40416			16
1.5	Filling plug	40368			1
1.6	Seal	40104	D114	*	1
1.7	Shield plug	154015			1
1.8	Usit-ring	90056	U8.7-14-1	*	1
1.9	Parallel pin	90304	10m6x24 DIN 6325		2
1.10	O-ring	910006	D23	*	1
52	Accumulator screw	301019			8
	*) Are included in seal set				

5. MAIN VALVE E 68



Item	Description	Part no.	Specification	Note	Qty
15	Main valve bushing	200246			1
16	Main spool	300418			1
17	Spool	40111			1
18	Spool	40112			1
19	Cover	30777			1
20	Cover	30776			1
46	O-ring	90005	D105	*	2
47	Seal	90020	D105	*	6
51	Hex. screw	90517	M16x35-8.8 DIN 933		12
53	Lock washer	90597	M16 NORD-LOCK		12
	*) Are included in seal set				

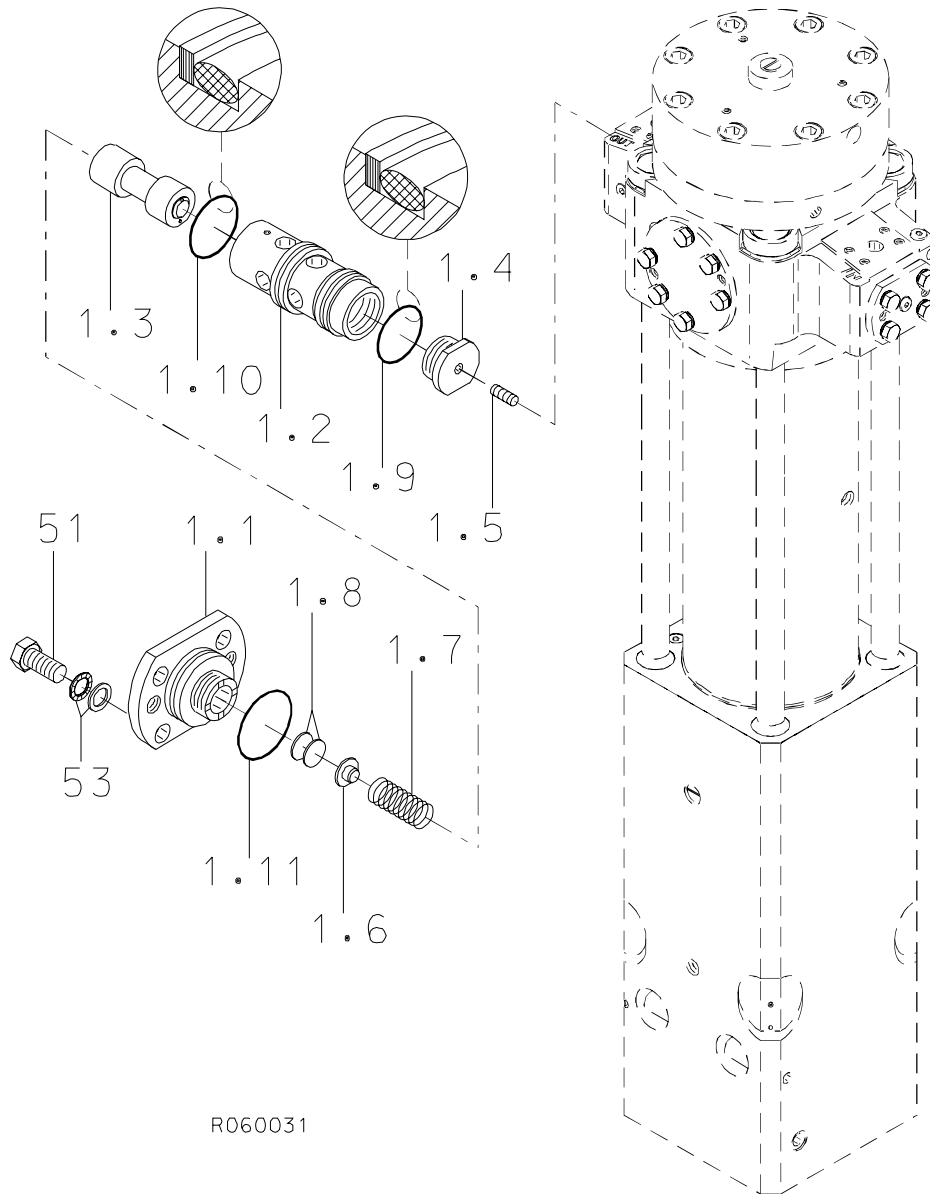
## 6. CHECK VALVE E 68



R060030

<b>Item</b>	<b>Description</b>	<b>Part no.</b>	<b>Specification</b>	<b>Note</b>	<b>Qty</b>
1	Check valve (incl. parts 1.1-1.6, 51 and 53)	300943			1
1.1	Check valve housing	300933			1
1.2	Check valve	90432			1
1.3	Spring ring	90310	B38 DIN 7993		1
1.4	Flange plug	90403	R1/4		1
1.5	O-ring	90031	D46	*	1
1.6	O-ring	90007	D44	*	1
51	Hex. screw	90517	M16x35-8.8 DIN 933		4
53	Lock washer	90597	M16 NORD-LOCK		4
	*) Are included in seal set				

**7. PRESSURE CONTROL VALVE E 68**

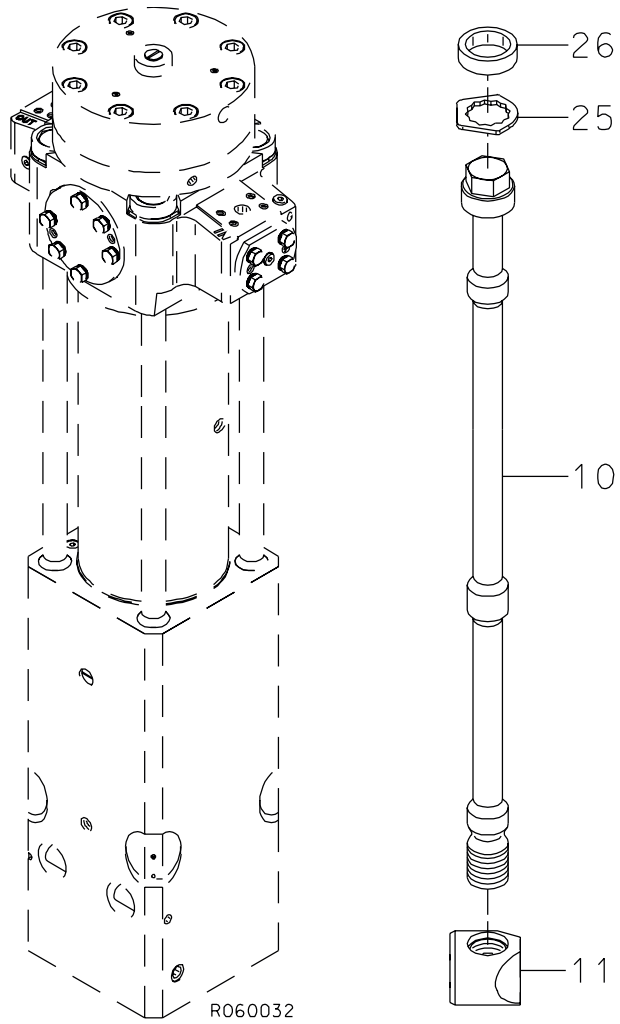


R060031

**PRESSURE CONTROL VALVE E 68**

<b>Item</b>	<b>Description</b>	<b>Part no.</b>	<b>Specification</b>	<b>Note</b>	<b>Qty</b>
1	Pressure control valve (incl. parts 1.1-1.11, 51 and 53)	300913			1
1.1	Cover	300998			1
1.2	Valve housing	300999			1
1.3	Spool	400687			1
1.4	Guide	400688			1
1.5	Spool	400690			1
1.6	Spring guide	40275			1
1.7	Spring	90104			1
1.8	Shim plate	42364	S=1.5		x
1.8	Shim plate	42365	S=1.25		x
1.8	Shim plate	42366	S=0.9		x
1.9	Seal	41375	D50	*	1
1.10	Seal	41374	D55	*	1
1.11	O-ring	90083	D60	*	1
51	Hex. screw	90517	M16x35-8.8 DIN 933		4
53	Lock washer	90597	M16 NORD-LOCK		4
	*) Are included in seal set				

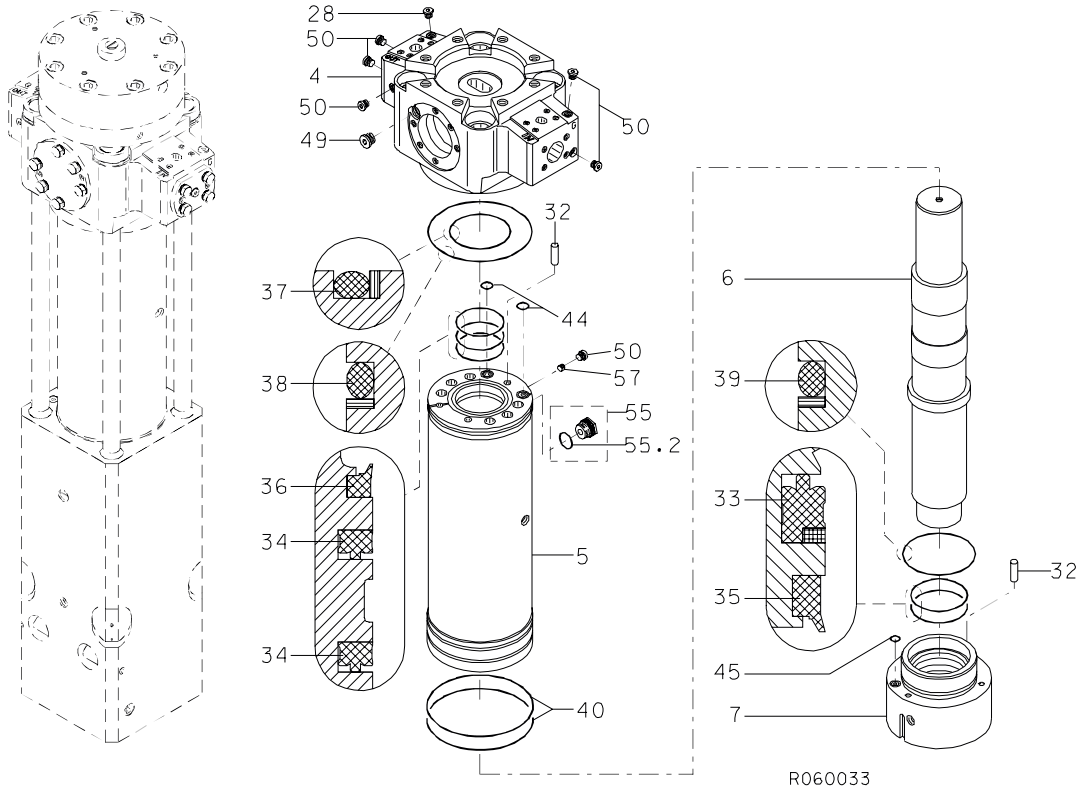
## 8. TIE RODS E 68





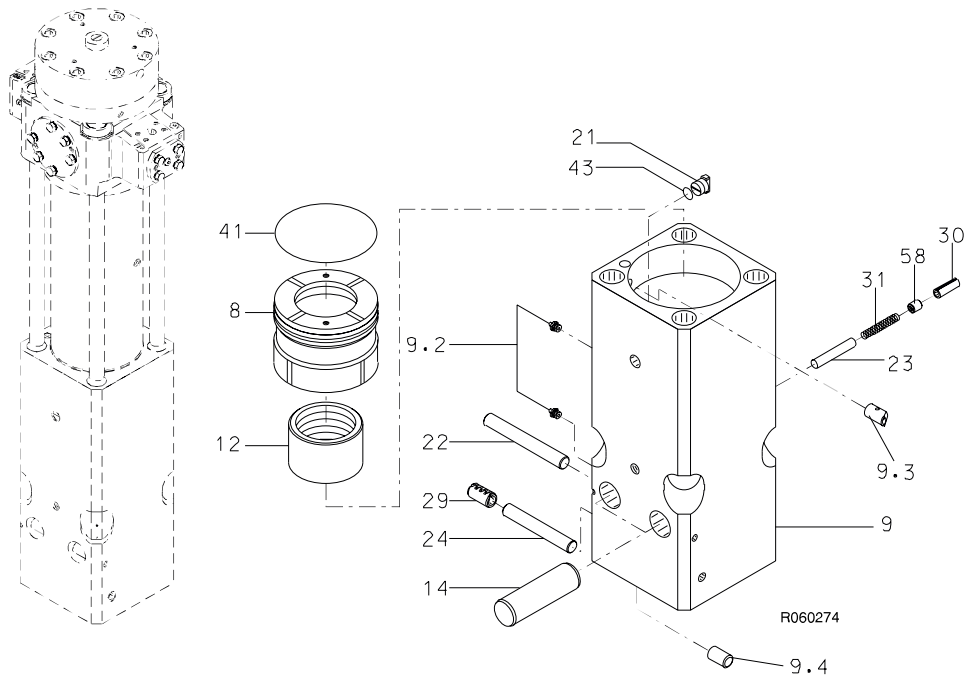
<b>Item</b>	<b>Description</b>	<b>Part no.</b>	<b>Specification</b>	<b>Note</b>	<b>Qty</b>
10	Tie rod	103761			4
11	Tie rod nut	103782			4
25	Lock plate	400659			4
26	Rubber ring	400661			4

**9. BODY PARTS E 68**



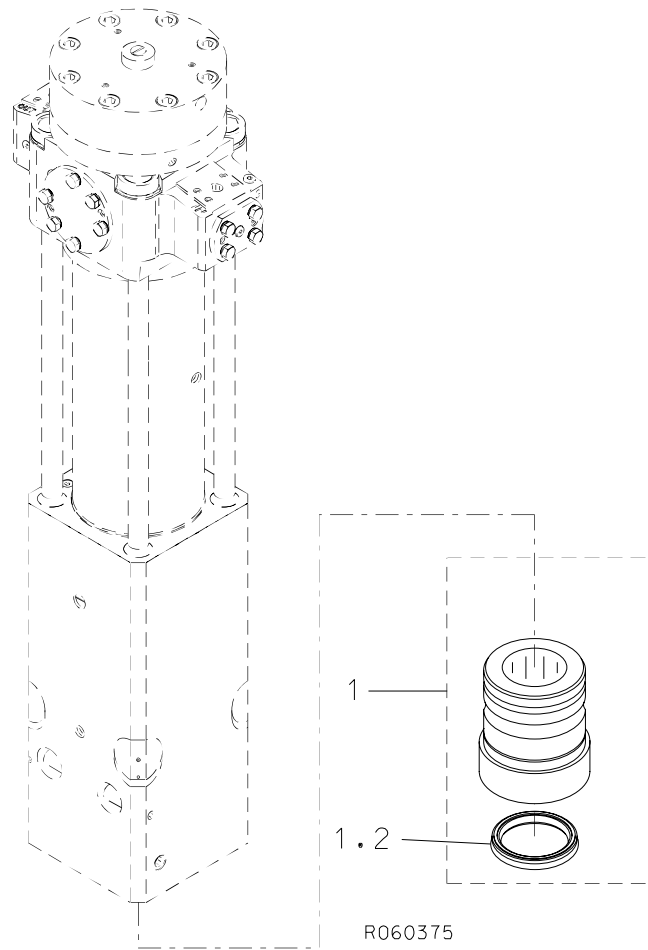
<b>Item</b>	<b>Description</b>	<b>Part no.</b>	<b>Specification</b>	<b>Note</b>	<b>Qty</b>
4	Valve body (incl. parts 28, 49 and 50)	100638			1
5	Cylinder (incl. parts 50, 55 and 57)	100640			1
6	Piston	100660			1
7	Seal carrier	100641			1
28	Breather	400662			1
32	Parallel pin	90317	16m6x50 DIN 6325		2
33	Seal	94118	D125	*	1
34	Seal	911008	D106	*	2
35	Wiper	94119	D125	*	1
36	Wiper	40141	D106	*	1
37	Seal	41350	D130	*	1
38	Seal	400663	D230	*	1
39	Seal	40137	D165	*	1
40	O-ring	90076	D229	*	2
44	O-ring	910018	D21	*	2
45	O-ring	90012	D19	*	1
49	Flange plug	90401	R3/4		1
50	Flange plug	90444	R3/8		6
55	Breather (incl. part 55.2)	101200			1
55.2	O-ring	902122	D24	*	1
57	Taper plug	93125	DIN 906-R1/4		1
	*) Are included in seal set				

10. FRONT HEAD E 68



Item	Description	Part no.	Specification	Note	Qty
8	Thrust ring	200521			1
9	Front head (incl. parts 9.2-9.4)	110713			1
9.2	Grease nipple	90200			2
9.3	Plug	110705			1
9.4	Plug	110710			1
12	Upper tool bushing	400653			1
14	Tool retaining pin	400654	D63		2
21	Wedge	40110			1
22	Retaining pin	400655	D30		1
23	Retaining pin	400361	D20		1
24	Pin	40108	D30		1
29	Split pin	901132	D30x60		1
30	Split pin	904022	21x60 DIN 1481		1
31	Spring	920007			1
41	O-ring	90036	D209	*	1
43	O-ring	90000	D24	*	1
58	Spring guide	101094			1
	*) Are included in seal set				

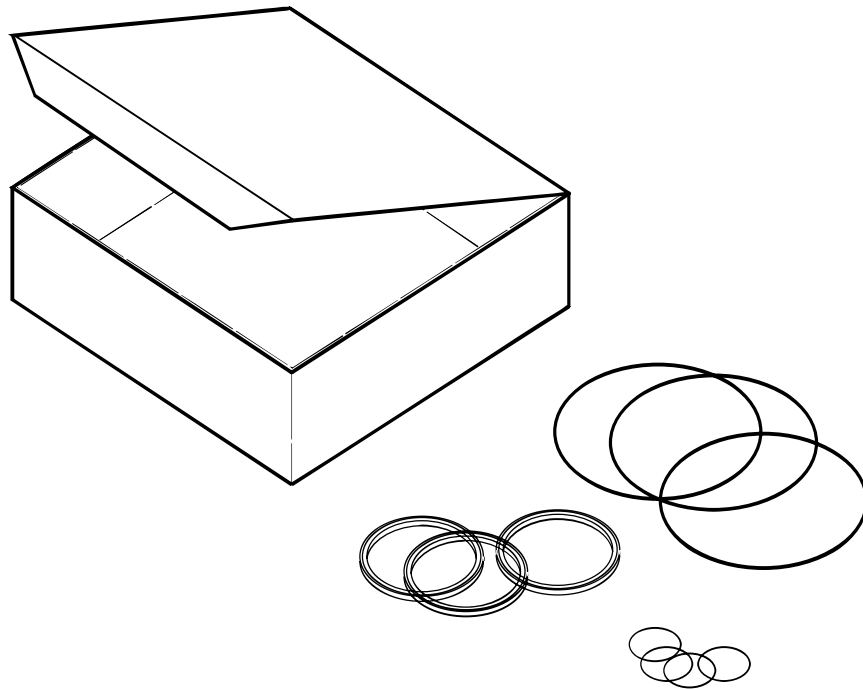
## 11. LOWER TOOL BUSHING E 68



Item	Description	Part no.	Specification	Note	Qty
1	Lower tool bushing (incl. part 1.2)	102156			1
1.2	Seal	102147			1

**12. SEAL SET E 68**

---



R060012

Item	Description	Part no.	Specification	Note	Qty
Kit	Seal set (incl. parts 1-25)	400667			1
1	Seal	94118	D125		1
2	Seal	911008	D106		2
3	Wiper	94119	D125		1
4	Wiper	40141	D106		1
5	Seal	41350	D130		1
6	Seal	400663	D230		1
7	Seal	40137	D165		1
8	O-ring	90076	D229		2
9	O-ring	90036	D209		1
11	O-ring	90000	D24		3
12	O-ring	910018	D21		2
13	O-ring	90012	D19		1
14	O-ring	90005	D105		2
15	Seal	90020	D105		6
16	O-ring	902122	D24		1
17	Seal	40104	D114		1
18	Usit-ring	90056	U8.7-14-1		1
19	O-ring	901026	D14		1
20	Seal	41375	D50		1
21	Seal	41374	D55		1
22	O-ring	90083	D60		1
23	O-ring	90031	D46		1
24	O-ring	90007	D44		1
25	O-ring	910006	D23		1







**SANDVIK TAMROCK CORP.**  
Breakers Lahti  
Taivalkatu 8, P.O. Box 165, FIN-15101 Lahti, Finland  
Phone Int. +358 205 44 161, Telefax Int. +358 205 44 160  
Internet <http://www.rammer.com>