

**PARTS MANUAL**  
**PMG80CCENG.002**

**HYDRAULIC HAMMER**  
**RAMMER G 80 CITY**  
**RAMMER G 80 CITY PRO**

**Serial No.**

**80AXA0005-UP**

**80ADA4005-UP**

**80ADA5005-UP**

**80APA6005-UP**

---

## TABLE OF CONTENTS

1. Housing unit G 80 CITY .....	4
2. Housing unit G 80 CITY PRO .....	6
3. Accumulator G 80 .....	8
4. Pilot valve G 80 .....	9
5. Main valve G 80 .....	10
6. Check valve G 80 .....	11
7. Restrictor valve G 80 .....	12
8. Pressure sequence valve G 80 .....	14
9. Tie rods G 80 .....	16
10. Body parts G 80 .....	18
11. Front head G 80 .....	20
12. Lower tool bushing G 80 .....	21
13. Seal set G 80 .....	22

---

## GENUINE RAMMER SPARE PARTS

Rammer genuine spare parts are designed and manufactured by using the latest technological knowledge and engineering skills. Rammer spare parts are made of the best available materials with the most advanced manufacturing techniques.

It is important that you use only genuine Rammer spare parts, to ensure easy operation, maintenance and repair of the product. Please note that eventual warranty claims will be handled only if you have used genuine Rammer parts in your Rammer.

## LOCATION OF THE SERIAL NUMBER

It's important to make correct reference to the serial number of the product when ordering spare parts. Identification of serial number is the only proper means of maintaining and identifying parts for a specific product. The location of equipment serial number is pointed in "Operation and maintenance" manual.

## SPARE PART ORDERS

Quick spare part deliveries are secured by exact orders.

### Required information:

- Name of customer and contact person
  - Order number (when available)
  - Delivery address
  - Mode of delivery (air mail etc.)
  - Required delivery date
  - Invoicing address
  - Model and serial number of the product
  - Name, number and required amount of spare parts
-

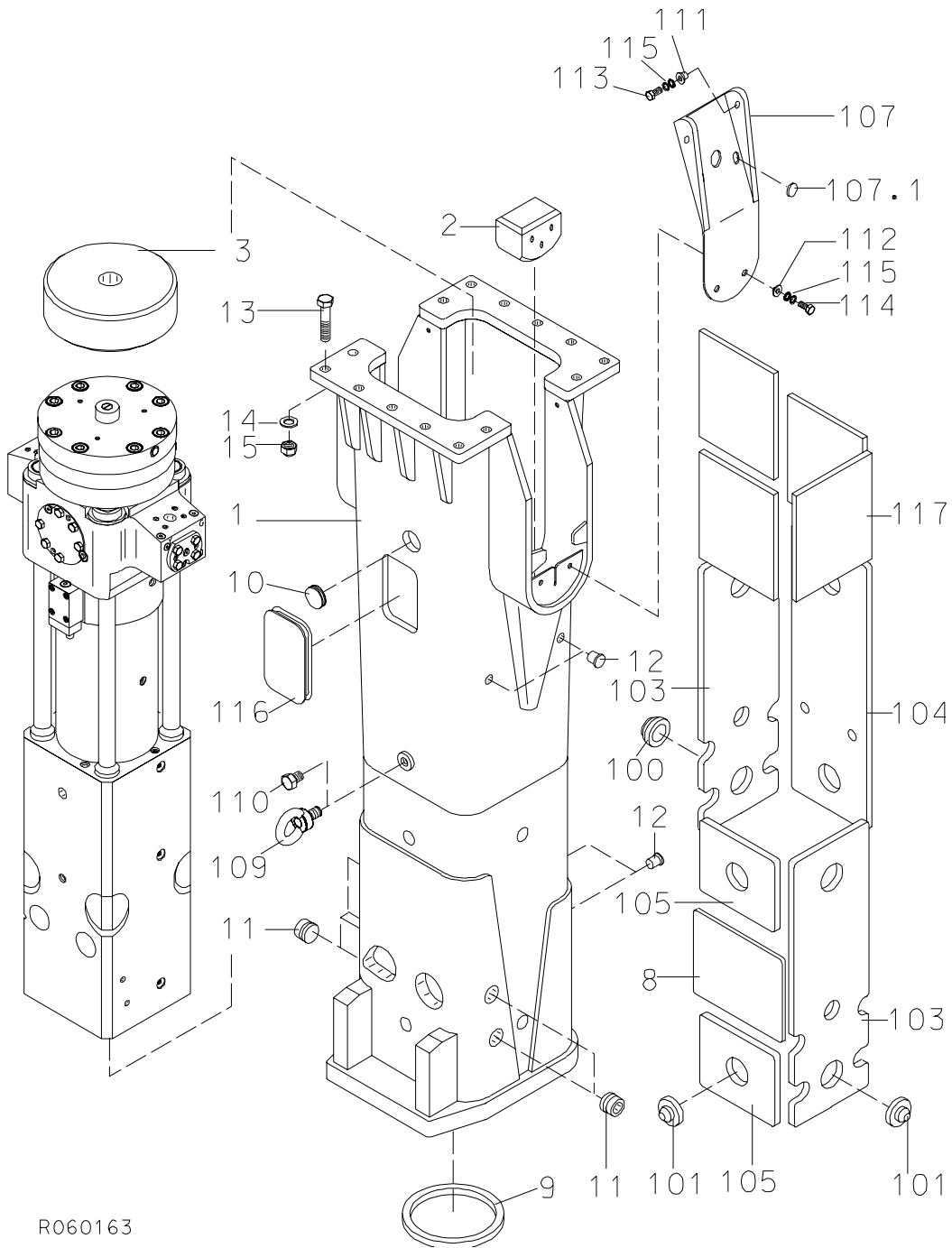
---

---

# **PARTS**

---

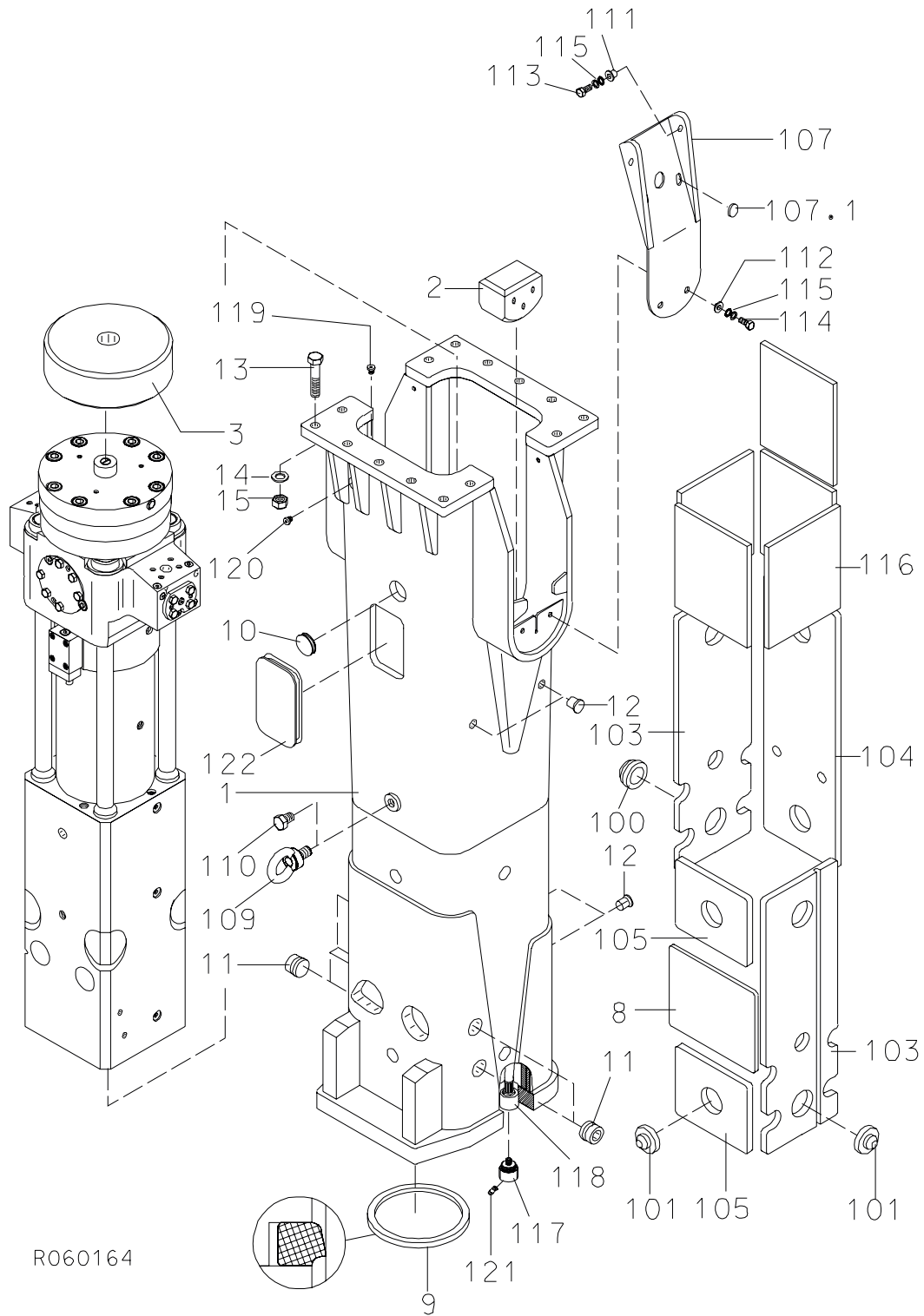
**1. HOUSING UNIT G 80 CITY**



R060163

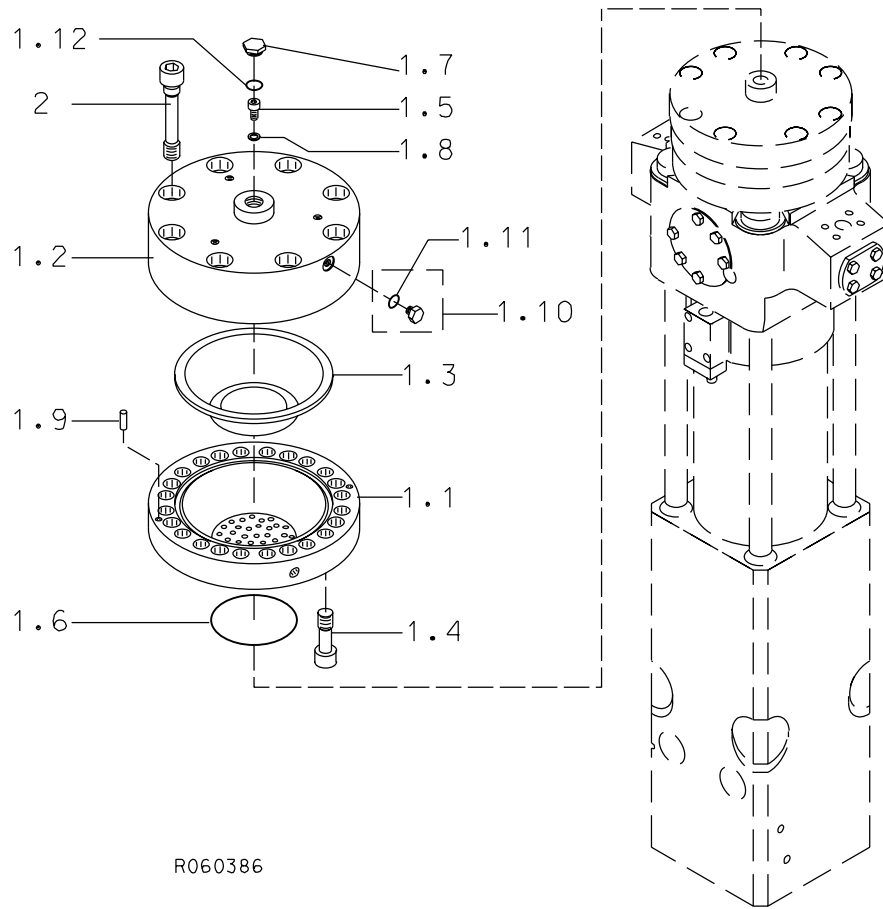
<b>Item</b>	<b>Description</b>	<b>Part no.</b>	<b>Specification</b>	<b>Note</b>	<b>Qty</b>
1	Housing (incl. parts 100-117)	104034			1
2	Pad	300978			2
3	Buffer	300979			1
8	Shield plate	102686			1
9	Seal	102329			1
10	Rubber plug	101723	D60		2
11	Rubber plug	400676	D50		6
12	Rubber plug	400566	D25		6
13	Hex. screw	90589	M24x110-12.9 DIN 931		14
14	Washer	90511	25 DIN 6916		14
15	Lock nut	90507	M24-12 DIN 985		14
100	Pin	102387			1
101	Pin	102389			7
103	Wear plate	104079			2
104	Wear plate	104080			1
105	Wear plate	104081			2
107	Shield plate (incl. part 107.1)	103623			2
107.1	Plug	103875			2
109	Lifting eye	90705	M30 DIN 580		1
110	Hex. screw	900026	M30x40-8.8 DIN 933		1
111	Middle bushing	102944			4
112	Middle bushing	102939			4
113	Hex. screw	91050	M12x40-8.8 DIN 933		4
114	Hex. screw	90513	M12x30-8.8 DIN 933		4
115	Lock washer	91012	M12 NORD-LOCK		8
116	Plug	104100			2
117	Damper	104138			5
Kit	Label set	104387			1

2. HOUSING UNIT G 80 CITY PRO



<b>Item</b>	<b>Description</b>	<b>Part no.</b>	<b>Specification</b>	<b>Note</b>	<b>Qty</b>
1	Housing (incl. parts 100-122)	104136			1
2	Pad	300978			2
3	Buffer	300979			1
8	Shield plate	102686			1
9	Seal	102329			1
10	Rubber plug	101723	D60		2
11	Rubber plug	400676	D50		6
12	Rubber plug	400566	D25		6
13	Hex. screw	90589	M24x110-12.9 DIN 931		14
14	Washer	90511	25 DIN 6916		14
15	Lock nut	90507	M24-12 DIN 985		14
100	Pin	102387			1
101	Pin	102389			7
103	Wear plate	104079			2
104	Wear plate	104080			1
105	Wear plate	104081			2
107	Shield plate (incl. part 107.1)	103623			2
107.1	Plug	103875			2
109	Lifting eye	90705	M30 DIN 580		1
110	Hex. screw	900026	M30x40-8.8 DIN 933		1
111	Middle bushing	102944			4
112	Middle bushing	102939			4
113	Hex. screw	91050	M12x40-8.8 DIN 933		4
114	Hex. screw	90513	M12x30-8.8 DIN 933		4
115	Lock washer	91012	M12 NORD-LOCK		8
116	Damper	104138			5
117	Guide	103047			2
118	Hose assembly	104139			1
119	Flange plug	90403	R1/4		1
120	Flange plug	90424	R1/2		1
121	Nozzle	102783	SSCO B1/8-GG-SS5		2
122	Plug	104100			2
Kit	Label set	104388			1

### 3. ACCUMULATOR G 80

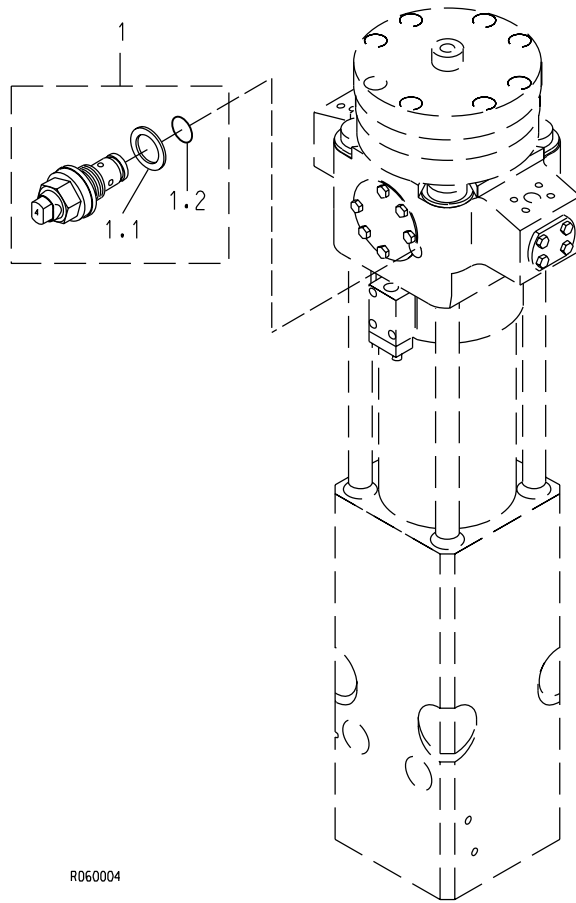


R060386

Item	Description	Part no.	Specification	Note	Qty
1	Accumulator (incl. parts 1.1-1.12)	101393			1
1.1	Accumulator bottom	101386			1
1.2	Accumulator cover	101376			1
1.3	Membrane	102942			1
1.4	Accumulator screw	40416			12
1.5	Filling plug	40368			1
1.6	Seal	41357	D124	*	1
1.7	Shield plug	400300		*	1
1.8	Usit-ring	90056	U8.7-14-1	*	1
1.9	Parallel pin	90304	10m6x24 DIN 6325		2
1.10	Plug (incl. part 1.11)	102482			1
1.11	O-ring	901026	D14	*	1
1.12	O-ring	910006	D23	*	1
2	Accumulator screw	41335			8
	*) Are included in seal set				



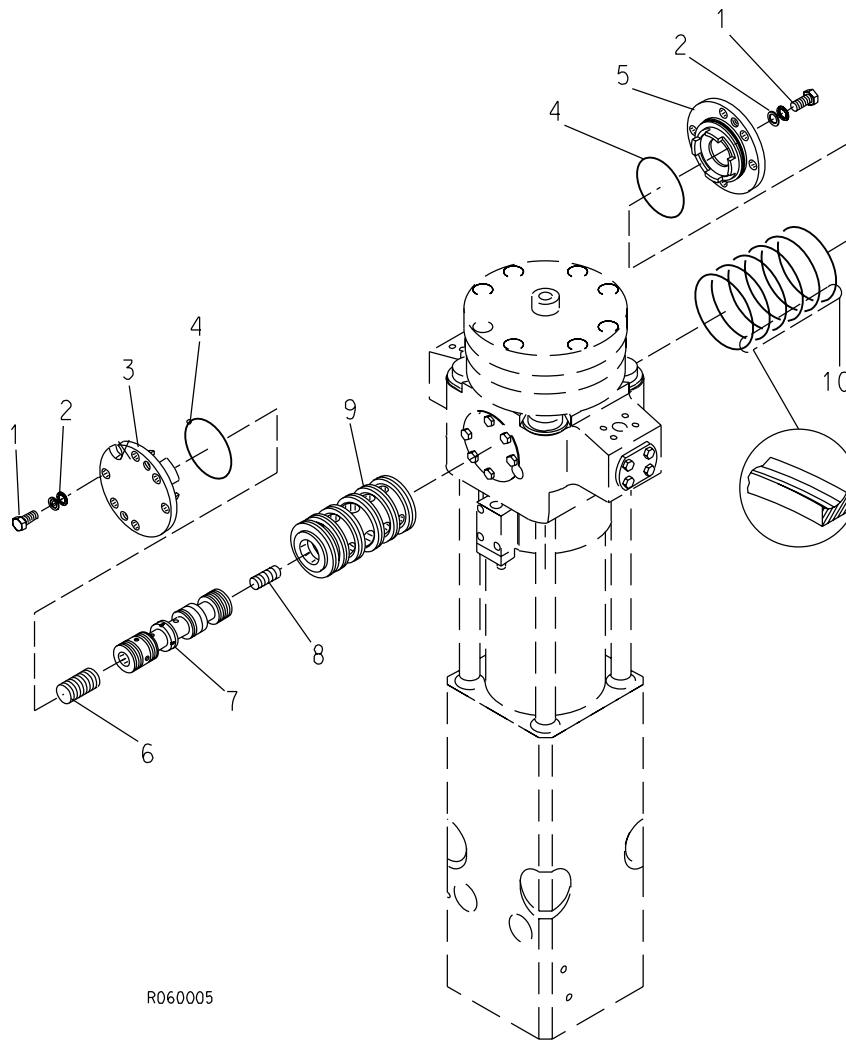
4. PILOT VALVE G 80



R060004

Item	Description	Part no.	Specification	Note	Qty
1	Pilot valve (incl. parts 1.1-1.2)	101598	Pressure level 6 (G 80 CITY PRO, S/N 80APA6, 80APB6)		1
	Pilot valve (incl. parts 1.1-1.2)	102670	Pressure level 5 (G 80 CITY, S/ N 80ADA5, 80ADB5)		1
	Pilot valve (incl. parts 1.1-1.2)	102510	Pressure level 4 (G 80 CITY, S/ N 80ADA4, 80ADB4)		1
1.1	Usit-ring	901187	D18	*	1
1.2	O-ring	901186	D10	*	1
	*) Are included in seal set				

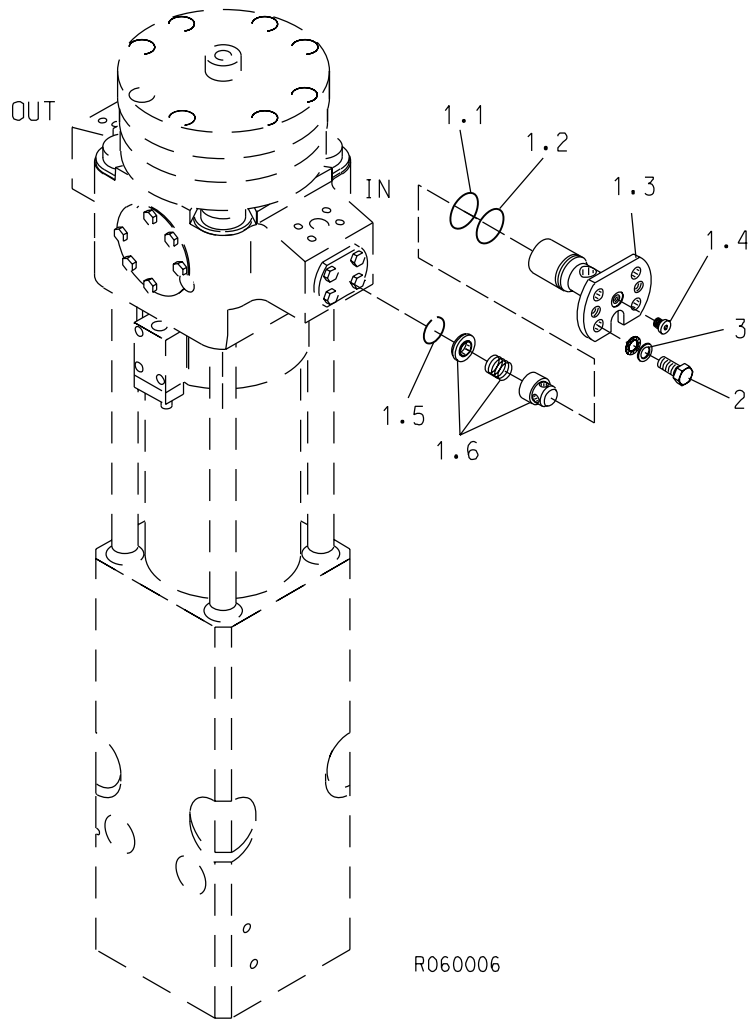
**5. MAIN VALVE G 80**



R060005

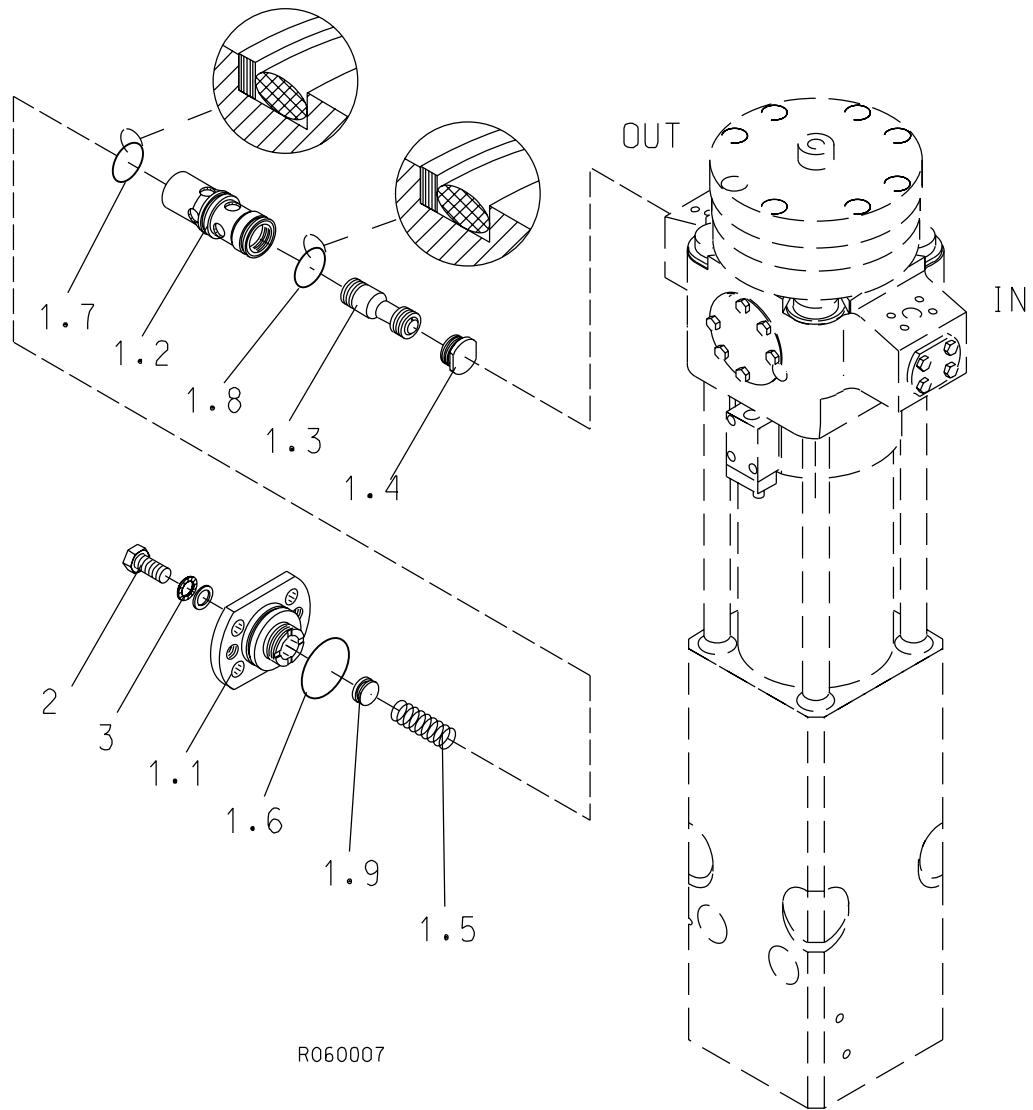
Item	Description	Part no.	Specification	Note	Qty
1	Hex. screw	90517	M16x35-8.8 DIN 933		12
2	Lock washer	90597	M16 NORD-LOCK		12
3	Cover	101472			1
4	O-ring	90005	D105	*	2
5	Cover	101830			1
6	Spool	101853			1
7	Main spool	101713			1
8	Spool	40112			1
9	Main valve bushing	103802			1
10	Seal	902668	D110	*	6
	*) Are included in seal set				

## 6. CHECK VALVE G 80



Item	Description	Part no.	Specification	Note	Qty
1	Check valve (incl. parts 1.1-1.6, 54 and 55)	300943			1
1.1	O-ring	90007	D44	*	1
1.2	O-ring	90031	D46	*	1
1.3	Check valve housing	300933			1
1.4	Flange plug	90403	R1/4		1
1.5	Spring ring	90310	B38 DIN 7993		1
1.6	Check valve	90432			1
2	Hex. screw	90517	M16x35-8.8 DIN 933		4
3	Lock washer	90597	M16 NORD-LOCK		4
	*) Are included in seal set				

**7. RESTRICTOR VALVE G 80**

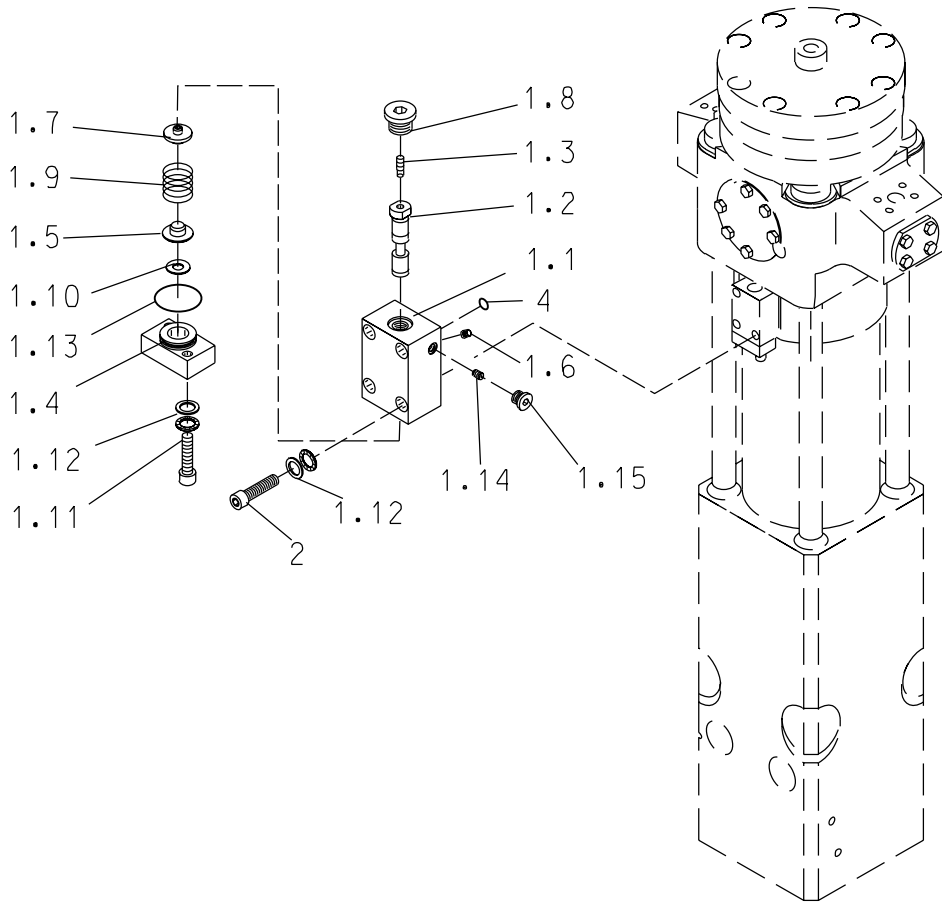


R060007

**RESTRICTOR VALVE G 80**

<b>Item</b>	<b>Description</b>	<b>Part no.</b>	<b>Specification</b>	<b>Note</b>	<b>Qty</b>
1	Restrictor valve (incl. parts 1.1-1.9)	101989			1
1.1	Cover	101994			1
1.2	Valve housing	101990			1
1.3	Spool	101991			1
1.4	Cover	101995			1
1.5	Spring	901196	D24x75		1
1.6	O-ring	90083	D60	*	1
1.7	Seal	41374	D55	*	1
1.8	Seal	41375	D50	*	1
1.9	Support plate	901198	DIN 988-S17x24		1
2	Hex. screw	90517	M16x35-8.8 DIN 933		4
3	Lock washer	90597	M16 NORD-LOCK		4
	*) Are included in seal set				

**8. PRESSURE SEQUENCE VALVE G 80**

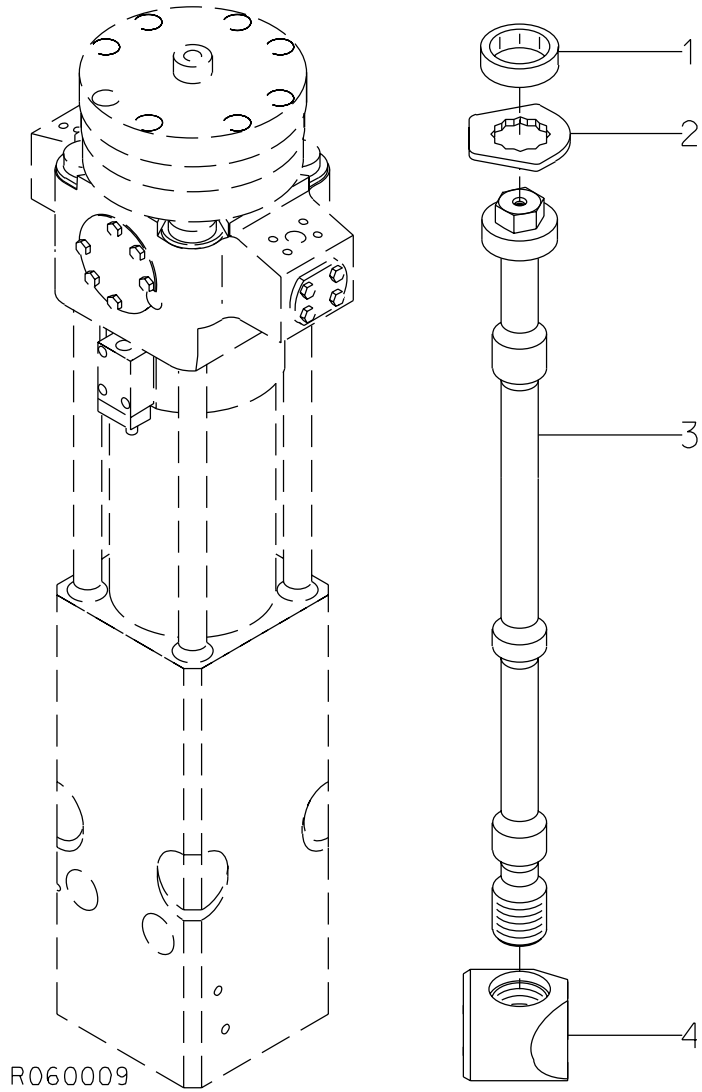


R060008

**PRESSURE SEQUENCE VALVE G 80**

<b>Item</b>	<b>Description</b>	<b>Part no.</b>	<b>Specification</b>	<b>Note</b>	<b>Qty</b>
1	Pressure sequence valve (incl. parts 1.1-1.15)	101576			1
1.1	Valve housing	101578			1
1.2	Spool	101621			1
1.3	Spool	101579			1
1.4	Spring housing	101465			1
1.5	Spring guide	40275			1
1.6	Ball plug	915028	D6		1
1.7	Spring guide	101580			1
1.8	Flange plug	90424	R1/2		1
1.9	Spring	90110	D25x64		1
1.10	Shim plate	42364	S=1.5		x
1.10	Shim plate	42365	S=1.25		x
1.10	Shim plate	42366	S=0.9		x
1.11	Hex. socket screw	90522	M12x40-12.9 DIN 912		2
1.12	Lock washer	91012	M12 NORD-LOCK		6
1.13	O-ring	94091	D39	*	1
1.14	Nozzle	101466			1
1.15	Flange plug	93203	R1/8		1
2	Hex. socket screw	902954	M12x50-12.9 DIN 912		4
4	O-ring	94035	D13	*	4
	*) Are included in seal set				

9. TIE RODS G 80

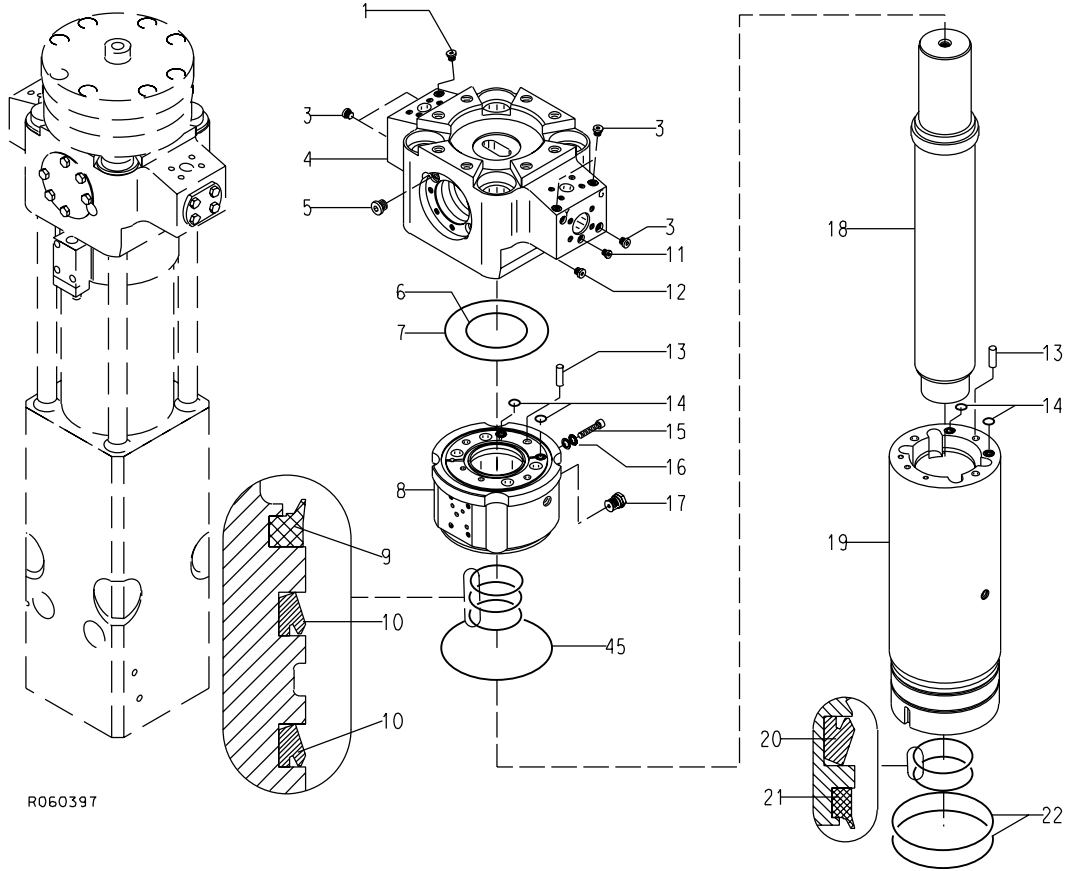


R060009



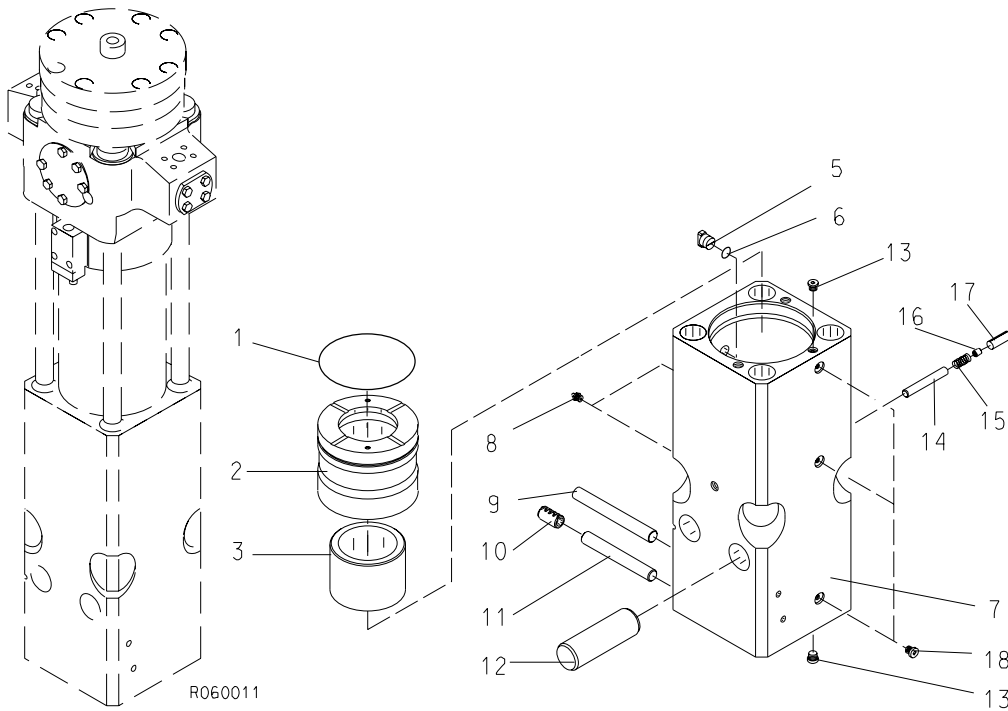
<b>Item</b>	<b>Description</b>	<b>Part no.</b>	<b>Specification</b>	<b>Note</b>	<b>Qty</b>
1	Rubber ring	40586			4
2	Lock plate	101449			4
3	<a href="#">Tie rod</a>	<a href="#">103760</a>			4
4	<a href="#">Tie rod nut</a>	<a href="#">103789</a>			4

**10. BODY PARTS G 80**



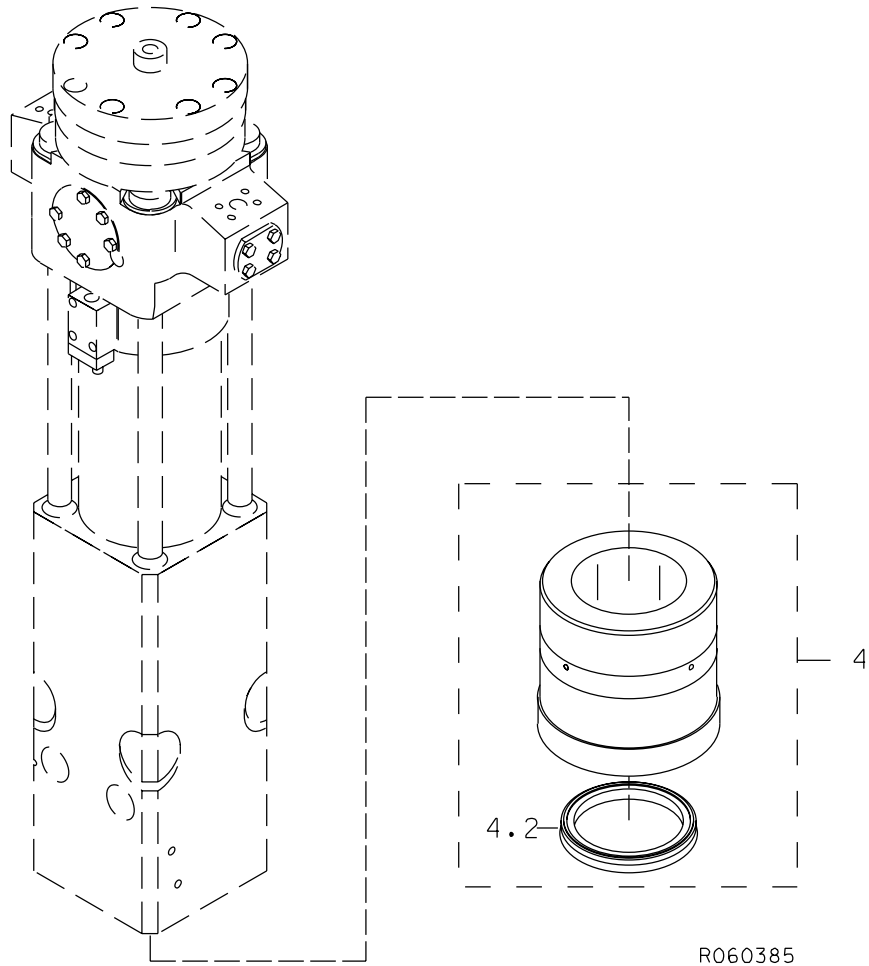
<b>Item</b>	<b>Description</b>	<b>Part no.</b>	<b>Specification</b>	<b>Note</b>	<b>Qty</b>
1	Breather	400662			1
3	Flange plug	90444	R3/8		5
4	Valve body (incl. parts 31, 34, 35, 36 and 63)	101287			1
5	Flange plug	90401	R3/4		1
6	Seal	41350	D130	*	1
7	Seal	41140	D239	*	2
8	Seal carrier	101626			1
9	Wiper	901160	D119	*	1
10	Seal	903324	D119	*	2
11	Plug	41658			1
12	Flange plug	90403	R1/4		1
13	Parallel pin	90317	16m6x50 DIN 6325		2
14	O-ring	901124	D17	*	4
15	Hex. socket screw	91041	M12x60-8.8 DIN 912		1
16	Lock washer	91012	M12 NORD-LOCK		1
17	Breather	101700			1
18	Piston	101443			1
19	Cylinder	101328			1
20	Seal	903325	D135	*	1
21	Wiper	913001	D135	*	1
22	O-ring	90076	D229	*	2
	*) Are included in seal set				

**11. FRONT HEAD G 80**



Item	Description	Part no.	Specification	Note	Qty
1	O-ring	90076	D229	*	1
2	Thrust ring	101375			1
3	Upper tool bushing	101414			1
5	Wedge	40110			1
6	O-ring	90000	D24	*	1
7	Front head (incl. parts 8, 13 and 18)	101302			1
8	Grease nipple	90200	R1/4		2
9	Retaining pin	101447	D30		1
10	Split pin	901132	D30x60		1
11	Retaining pin	400360	D30		1
12	Tool retaining pin	101446			2
13	Plug	102416			2
14	Retaining pin	101448			1
15	Spring	920007			1
16	Spring guide	101094			1
17	Split pin	904022	21x60 DIN 1481		1
18	Plug	102415			3
	*) Are included in seal set				

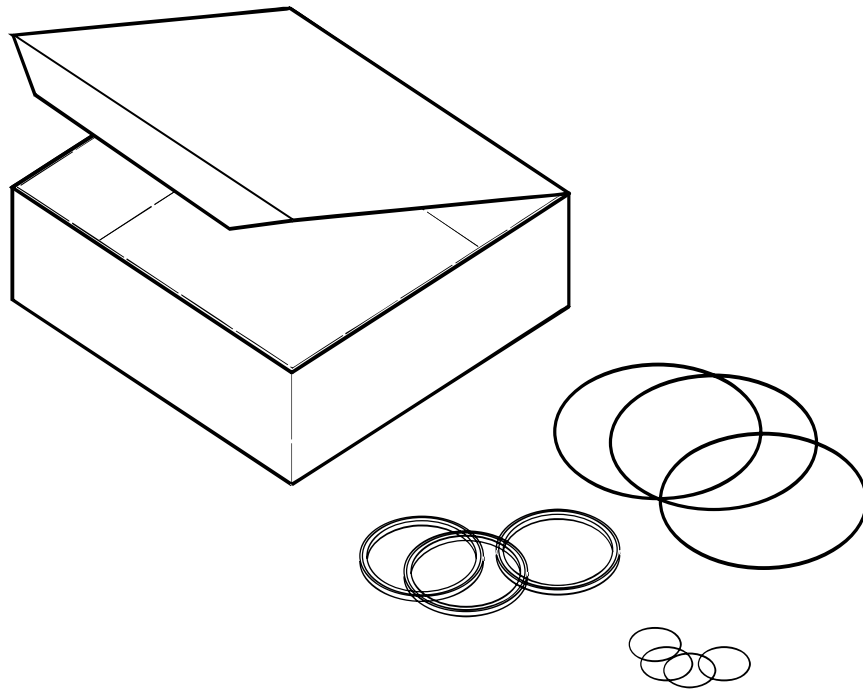
**12. LOWER TOOL BUSHING G 80**



Item	Description	Part no.	Specification	Note	Qty
4	Lower tool bushing (incl. part 4.2)	102668			1
4.2	Seal	102013	D140		1

**13. SEAL SET G 80**

---



R060012

Item	Description	Part no.	Specification	Note	Qty
Kit	Seal set (incl. parts 1-27)	102255			1
1	O-ring	901173	D27		1
2	Wiper	913001	D135		1
3	Seal	903325	D135		1
4	Seal	903324	D119		2
5	Wiper	901160	D119		1
6	O-ring	90076	D229		3
7	Seal	41140	D239		2
8	Seal	41350	D130		1
9	Seal	90020	D105		6
10	Seal	902668	D110		6
11	O-ring	90005	D105		2
12	O-ring	90000	D24		1
13	O-ring	901124	D17		4
14	O-ring	94035	D13		4
15	Seal	41357	D124		1
16	Usit-ring	90056	U8.7-14-1		1
17	O-ring	901026	D14		1
19	O-ring	90083	D60		1
20	Seal	41374	D55		1
21	Seal	41375	D50		1
22	O-ring	90031	D46		1
23	O-ring	90007	D44		1
24	O-ring	94091	D39		1
25	O-ring	901186	D10		1
26	Usit-ring	901187	D18		1
27	O-ring	910006	D23		1







**SANDVIK TAMROCK CORP.**  
Breakers Lahti  
Taivalkatu 8, P.O. Box 165, FIN-15101 Lahti, Finland  
Phone Int. +358 205 44 161, Telefax Int. +358 205 44 160  
Internet <http://www.rammer.com>

87-40-14014-27-160-308  
87-40-14014-36-8-189