

PARTS MANUAL
PMG88CENG.605

HYDRAULIC HAMMER

RAMMER G 88 CITY

Serial No.
88ADB5005-UP

TABLE OF CONTENTS

1. Housing unit	4
2. Accumulator	6
3. Pilot valve	7
4. Main valve	8
5. Check valve.	9
6. Pressure control valve	10
7. Pressure sequence valve.	11
8. Idle selector.	12
9. Tie rods.	13
10. Body parts.	14
11. Front head	16
12. Lower tool bushing.	18
13. Greasing device	20
14. Seal set	22

GENUINE RAMMER SPARE PARTS

Rammer genuine spare parts are designed and manufactured by using the latest technological knowledge and engineering skills. Rammer spare parts are made of the best available materials with the most advanced manufacturing techniques.

It is important that you use only genuine Rammer spare parts, to ensure easy operation, maintenance and repair of the product. Please note that eventual warranty claims will be handled only if you have used genuine Rammer parts in your Rammer.

LOCATION OF THE SERIAL NUMBER

It's important to make correct reference to the serial number of the product when ordering spare parts. Identification of serial number is the only proper means of maintaining and identifying parts for a specific product. The location of equipment serial number is pointed in "Operation and maintenance" manual.

SPARE PART ORDERS

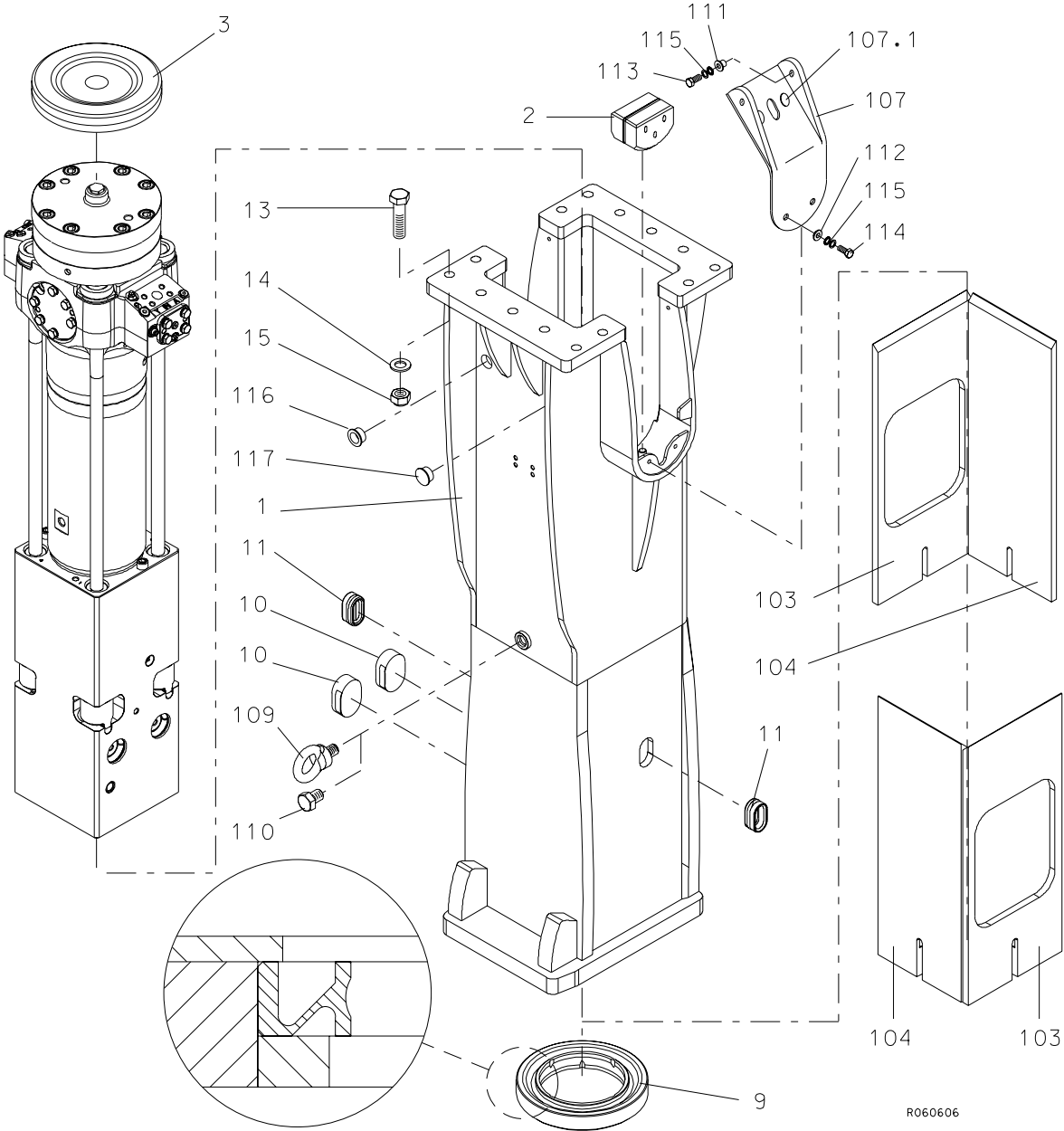
Quick spare part deliveries are secured by exact orders.

Required information:

- Name of customer and contact person
 - Order number (when available)
 - Delivery address
 - Mode of delivery (air mail etc.)
 - Required delivery date
 - Invoicing address
 - Model and serial number of the product
 - Name, number and required amount of spare parts
-

PARTS

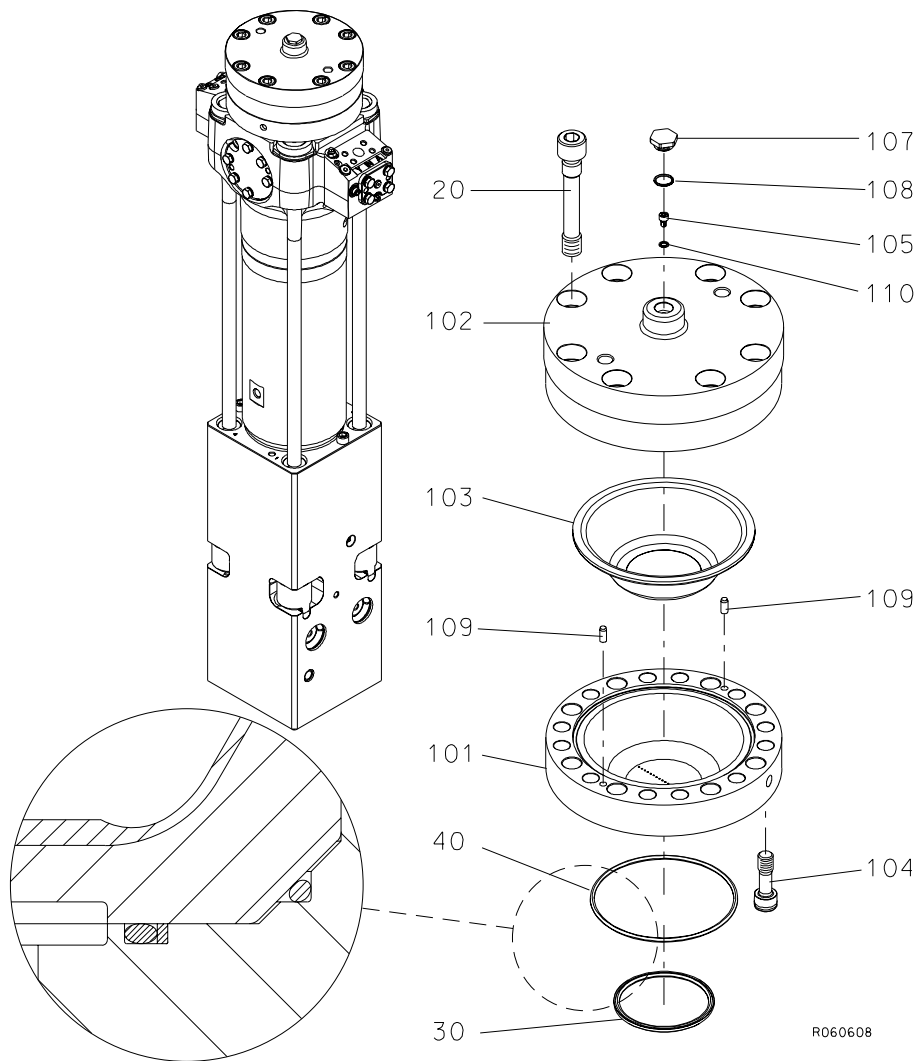
1. HOUSING UNIT



R060606

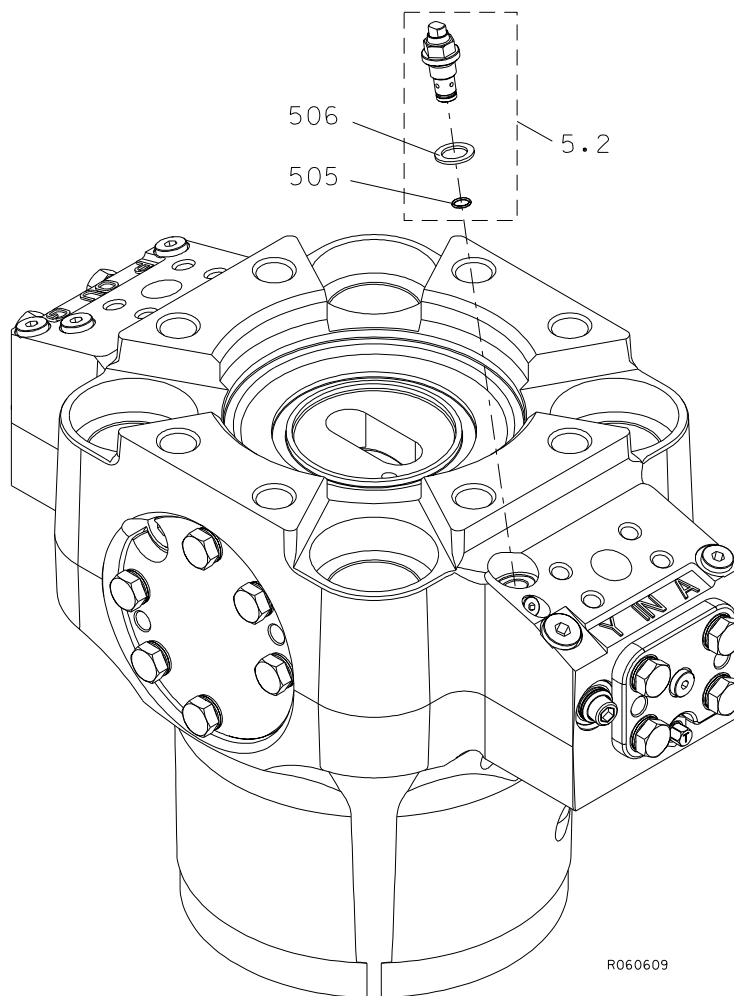
Item	Description	Part no.	Specification	Note	Qty
1	Housing (incl. parts 103-117)	155767			1
2	Pad	155438			2
3	Buffer	154317			1
9	Seal	153013			1
10	Plug	157947			2
11	Rubber plug	300950			2
13	Hex. screw	90589	M24x110-12.9 DIN 931		14
14	Washer	90511	25 DIN 6916		14
15	Lock nut	90507	M24-12 DIN 985		14
103	Wear plate	155325			2
104	Wear plate	155512			2
107	Shield plate (incl. part 107.1)	102980			2
107.1	Plug	103875			2
109	Lifting eye	90705	M30 DIN 580		1
110	Hex. screw	900026	M30x40-8.8 DIN 933		1
111	Middle bushing	102944			4
112	Middle bushing	102939			4
113	Hex. screw	91050	M12x40-8.8 DIN 933		4
114	Hex. screw	90513	M12x30-8.8 DIN 933		4
115	Lock washer	91012	M12 NORD-LOCK		8
116	Plug	158147			1
117	Plug	400491			1
Kit	Label set	155930			1

2. ACCUMULATOR



Item	Description	Part no.	Specification	Note	Qty
1	Accumulator (incl. parts 101-110)	155339			1
101	Accumulator bottom	155343			1
102	Accumulator cover	155342			1
103	Membrane	102942			1
104	Accumulator screw	40416			12
105	Filling plug	40368			1
107	Shield plug	154015			1
108	O-ring	910006	D23	*	1
109	Parallel pin	90304	10m6x24 DIN 6325		2
110	Usit-ring	90056	D9	*	1
20	Accumulator screw	41335			8
30	Seal	41357	D124	*	1
40	O-ring	910002	D194	*	1
	*) Are included in seal set				

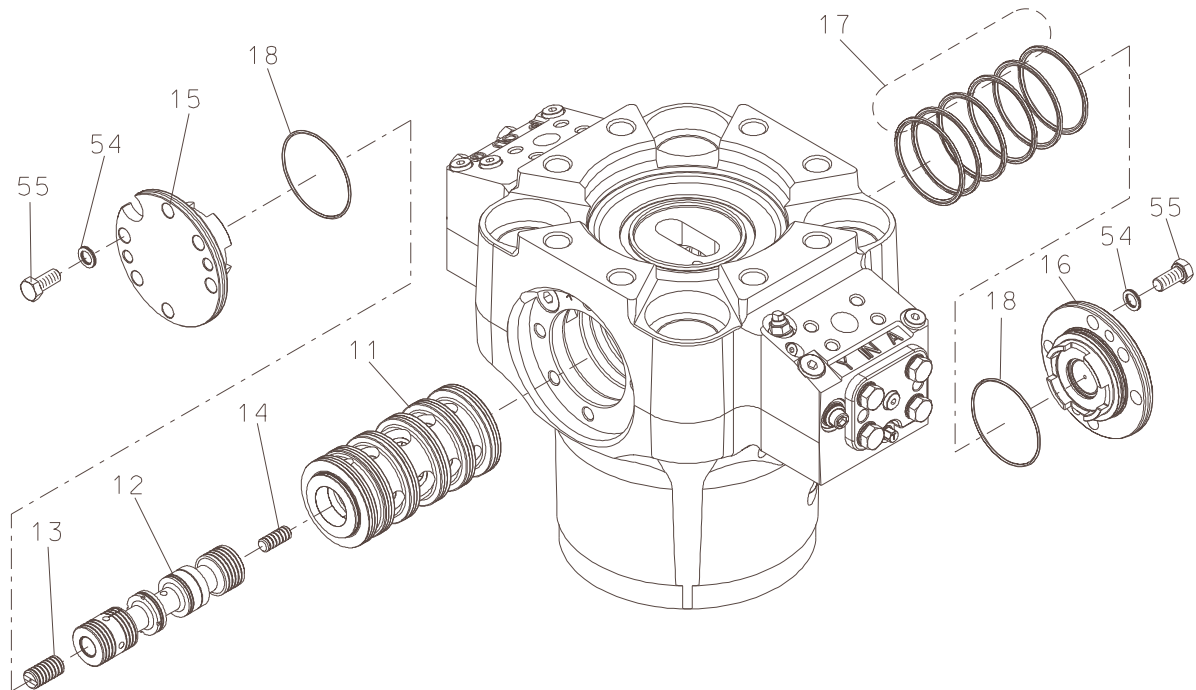
3. PILOT VALVE



R060609

Item	Description	Part no.	Specification	Note	Qty
5.2	Pilot valve (incl. parts 505-506)	102670	Pressure level 5		1
505	O-ring	901186	D10	*	1
506	Usit-ring	901187	D18	*	1
	*) Are included in seal set				

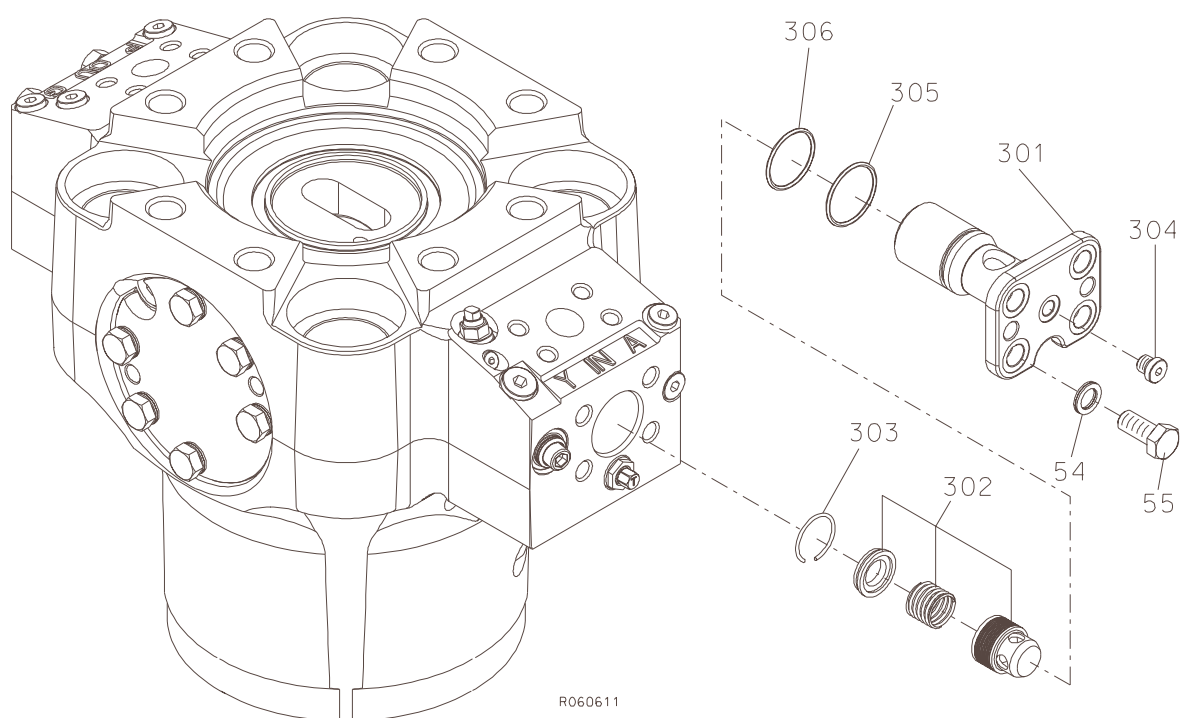
4. MAIN VALVE



R060610

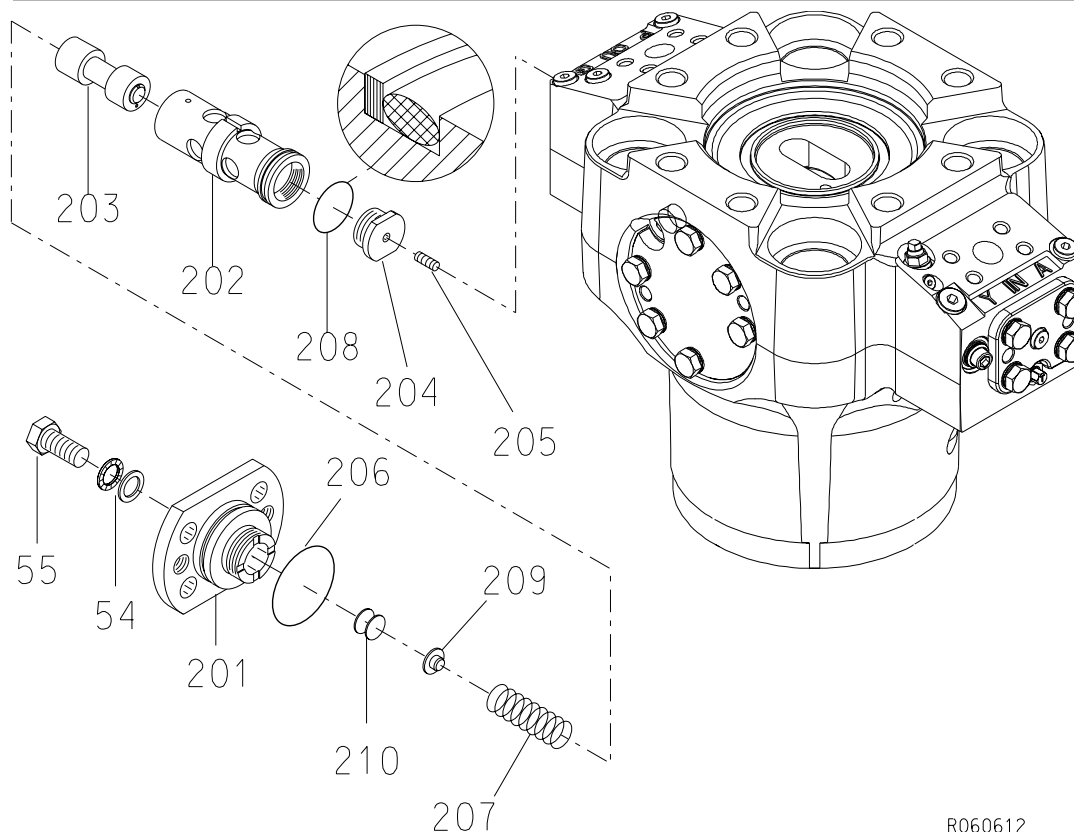
Item	Description	Part no.	Specification	Note	Qty
11	Main valve bushing	103802			1
12	Main spool	101713			1
13	Spool	101853	D23		1
14	Spool	40112	D16		1
15	Cover	101472			1
16	Cover	101830			1
17	Seal	902668	D110	*	6
18	O-ring	90005	D105	*	2
54	Lock washer	90597	M16 NORD-LOCK		12
55	Hex. screw	90517	M16x35-8.8 ISO 4017		12
	*) Are included in seal set				

5. CHECK VALVE



Item	Description	Part no.	Specification	Note	Qty
3	Check valve (incl. parts 301-306, 54 and 55)	157938			1
301	Check valve housing	157937			1
302	Check valve	90432			1
303	Spring ring	90310	B38 DIN 7993		1
304	Flange plug	90403	R1/4		1
305	O-ring	90031	D46	*	1
306	O-ring	90007	D44	*	1
54	Lock washer	90597	M16 NORD-LOCK		4
55	Hex. screw	90517	M16x35-8.8 ISO 4017		4
	*) Are included in seal set				

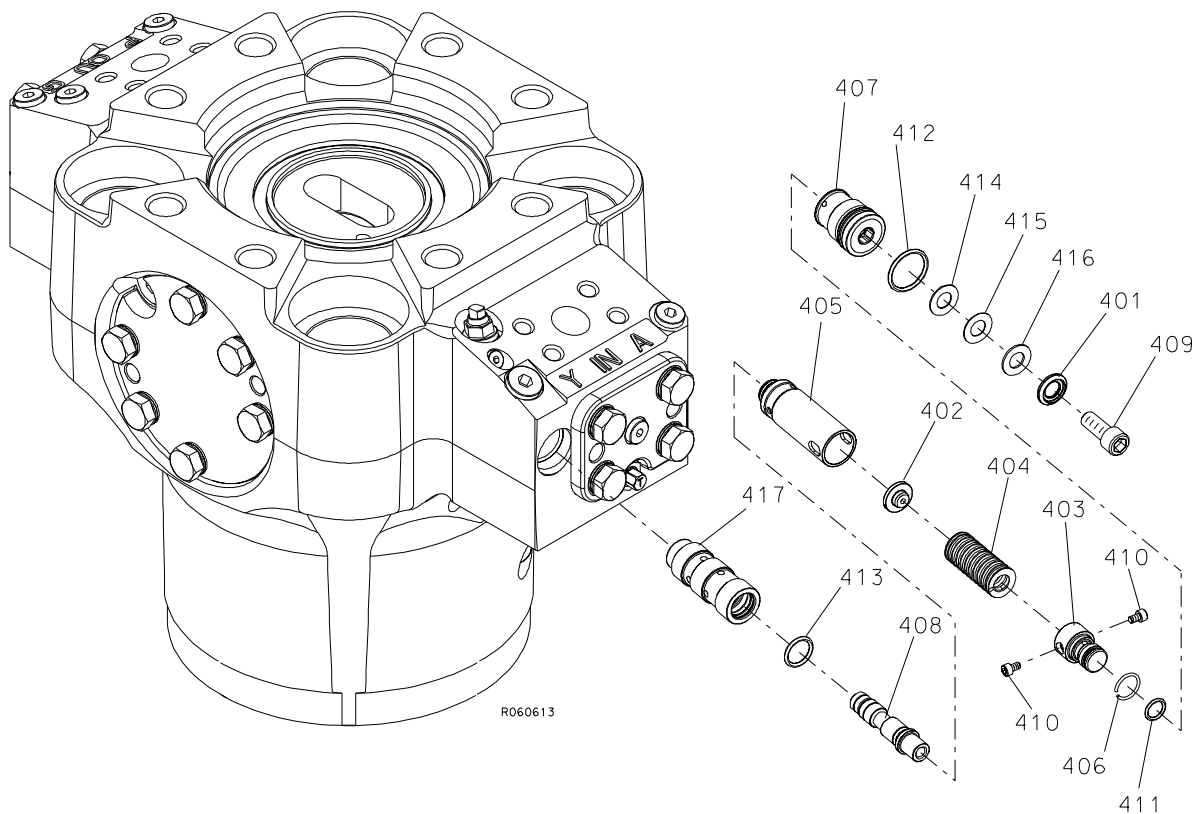
6. PRESSURE CONTROL VALVE



R060612

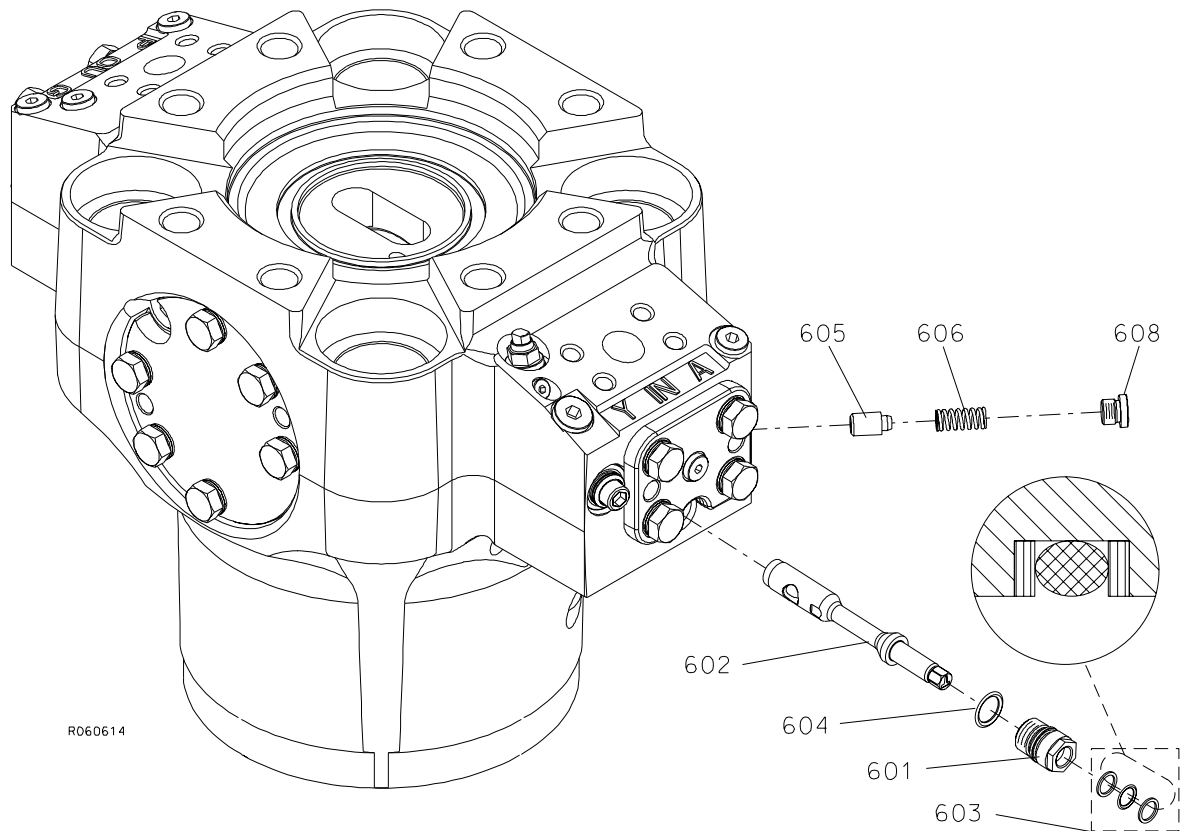
Item	Description	Part no.	Specification	Note	Qty
2	Pressure control valve (incl. parts 201-210, 54 and 55)	101909			1
201	Cover	300998			1
202	Valve housing	101916			1
203	Spool	102536	D36		1
204	Guide	400688			1
205	Spool	400690	D9		1
206	O-ring	90083	D60	*	1
207	Spring	90104			1
208	Seal	41375	D50	*	1
209	Spring guide	40275			1
210	Shim plate	42364	S=1.5		X
210	Shim plate	41794	S=0.5		X
210	Shim plate	41793	S=1		X
54	Lock washer	90597	M16 NORD-LOCK		4
55	Hex. screw	90517	M16x35-8.8 ISO 4017		4
	*) Are included in seal set				

7. PRESSURE SEQUENCE VALVE



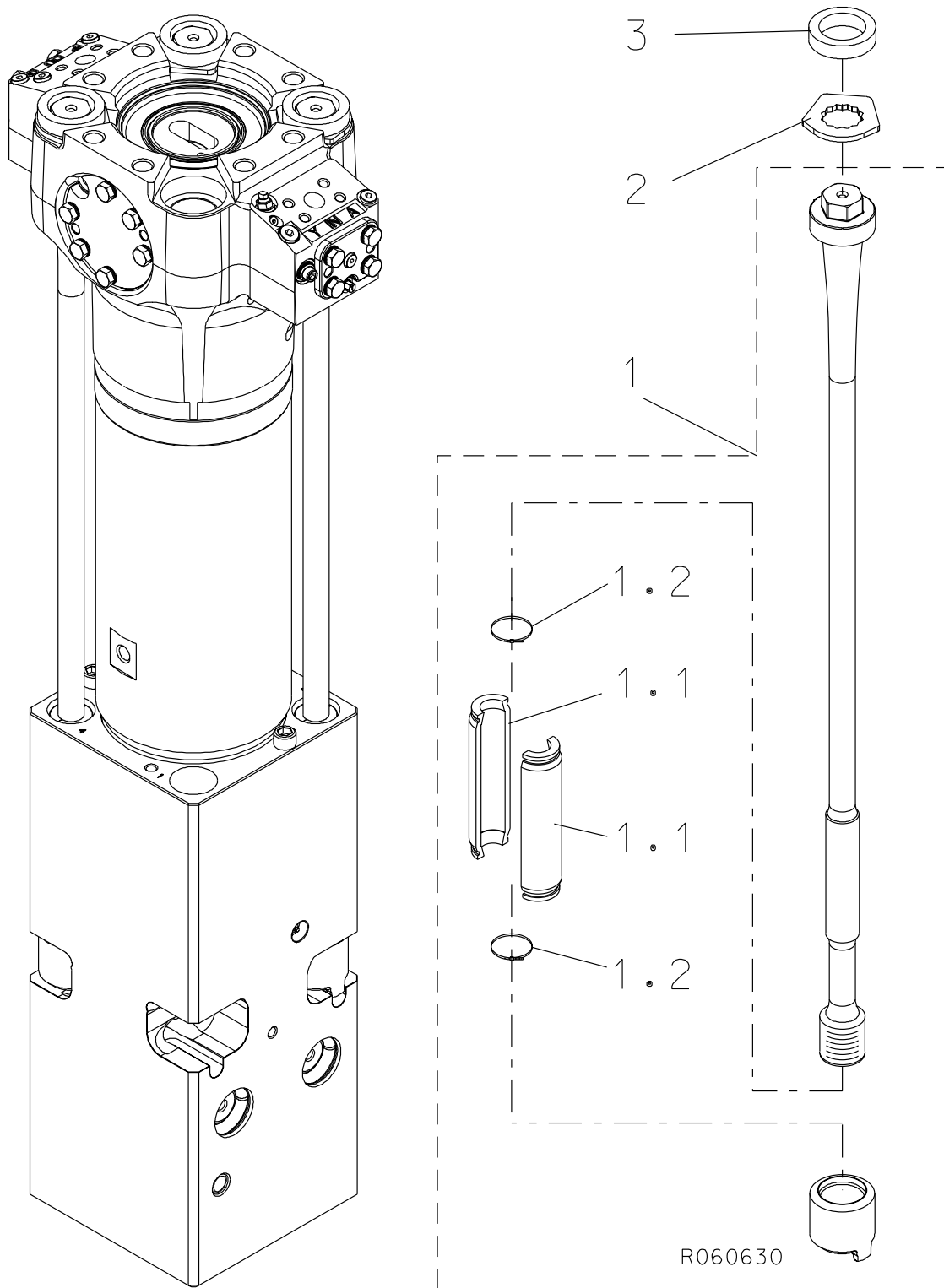
Item	Description	Part no.	Specification	Note	Qty
4	Pressure sequence valve (incl. parts 401-417)	155251			1
401	Washer	155327			1
402	Spring guide	101580			1
403	Spring guide	155225			1
404	Spring	90110	D25x64		1
405	Spring housing	155224			1
406	Spring ring	90364	B20 DIN 7993		1
407	Cover	155226			1
408	Spool	155276			1
409	Hex. socket screw	91045	M12x30-8.8 ISO 4762		1
410	Hex. socket screw	951582	M5x8-8.8 ISO 4762		2
411	O-ring	94035	D13	*	1
412	O-ring	901143	D29	*	1
413	O-ring	951416	D19	*	1
414	Shim plate	41793			1
415	Shim plate	41794			1
416	Shim plate	42364			1
417	Valve housing	155217			1
	*) Are included in seal set				

8. IDLE SELECTOR



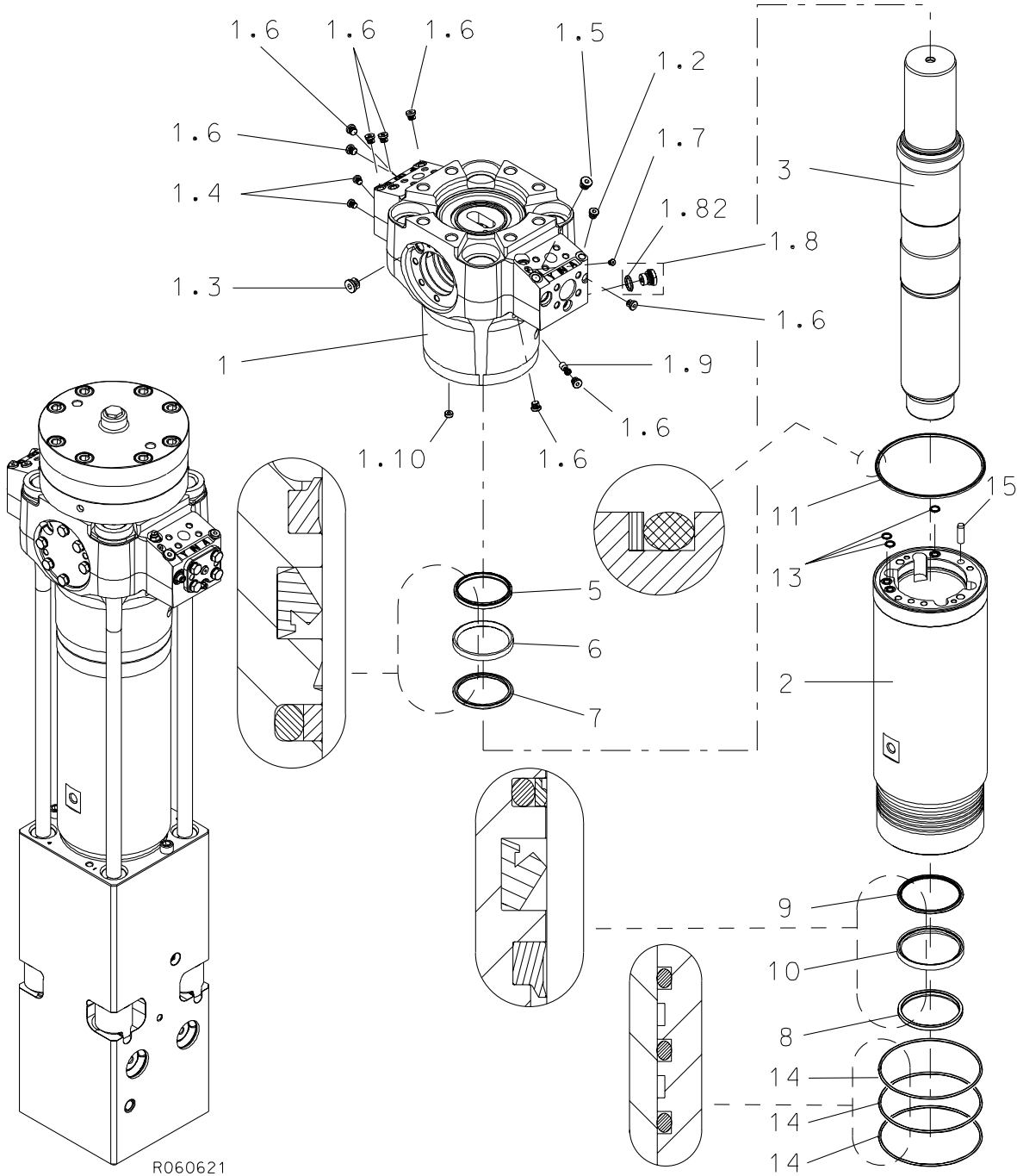
Item	Description	Part no.	Specification	Note	Qty
6	Valve (incl. parts 601-604)	157673			1
601	Cover	156729			1
602	Spool	156728			1
603	Seal	112835	D13	*	1
604	O-ring	90001	D20	*	1
605	Pin	156730			1
606	Spring	951797	Danly 9-1006-11		1
608	Flange plug	90444	BSP 3/8		1
	*) Are included in seal set				

9. TIE RODS



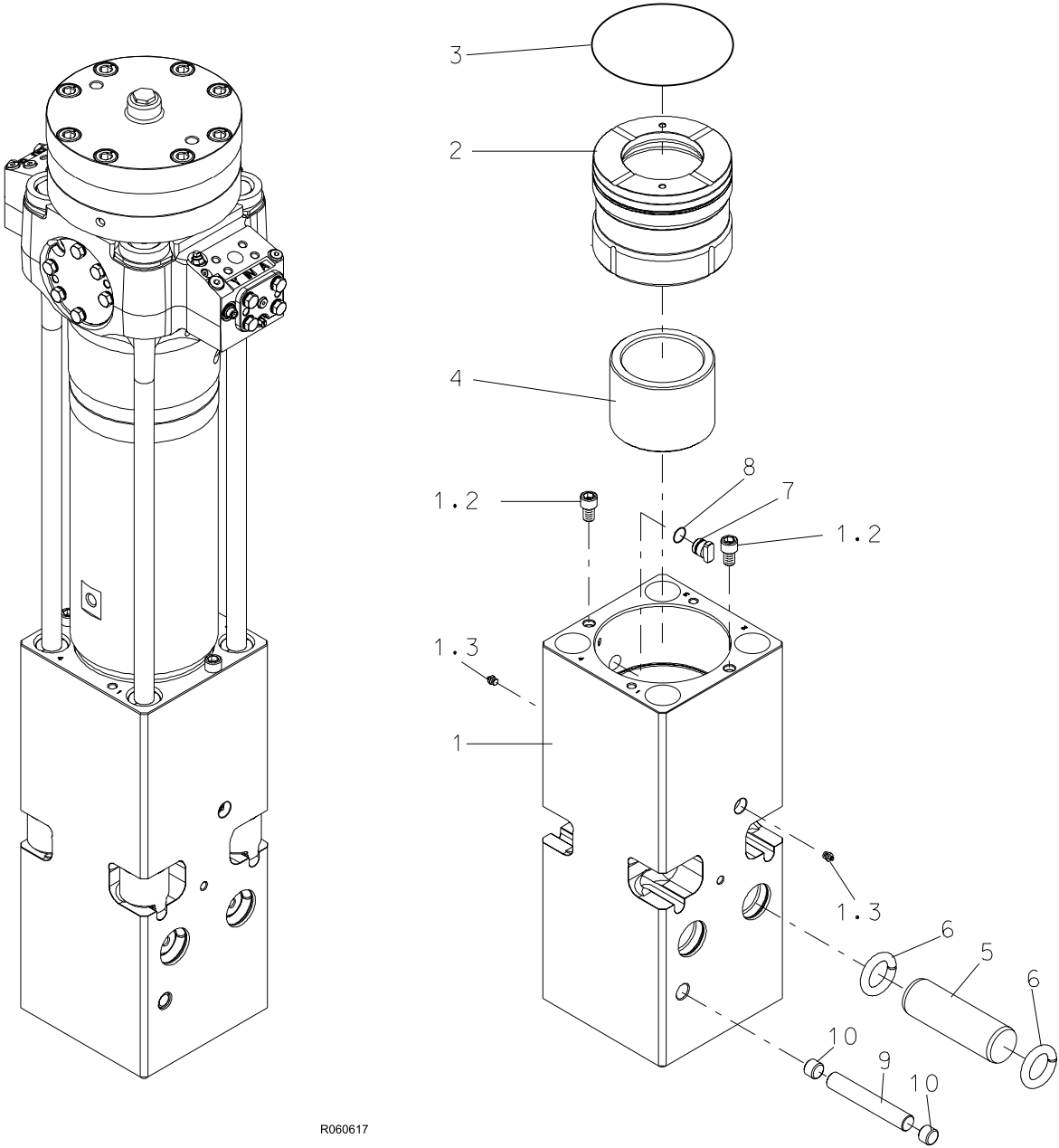
Item	Description	Part no.	Specification	Note	Qty
1	Tie rod (incl. parts 1.1-1.2)	158327			4
1.1	Bushing	155555			2
1.2	Cable tie	952009			2
2	Lock plate	101449			4
3	Rubber ring	40586			4

10. BODY PARTS



Item	Description	Part no.	Specification	Note	Qty
1	Valve body (incl. parts 1.2-1.10)	157729			1
1.2	Breather	400662			1
1.3	Flange plug	90401	R3/4		1
1.4	Flange plug	90403	R1/4		2
1.5	Flange plug	90424	R1/2		1
1.6	Flange plug	90444	R3/8		9
1.7	Flange plug	93203	R1/8		1
1.8	Breather (incl. part 1.82)	101700			1
1.82	O-ring	901173	D27	*	1
1.9	Plug	155625			1
1.10	Nozzle	157674			1
2	Cylinder	155031			1
3	Piston	155437			1
5	Wiper	901160	D119	*	1
6	Seal	951598	D120	*	1
7	Seal	150244	D118	*	1
8	Wiper	913001	D135	*	1
9	Seal	952033	D135	*	1
10	Seal	903325	D135	*	1
11	Seal	41140	D239	*	1
13	O-ring	901124	D17	*	3
14	O-ring	90076	D229	*	3
15	Parallel pin	90317	16m6x50 DIN 6325		1
	*) Are included in seal set				

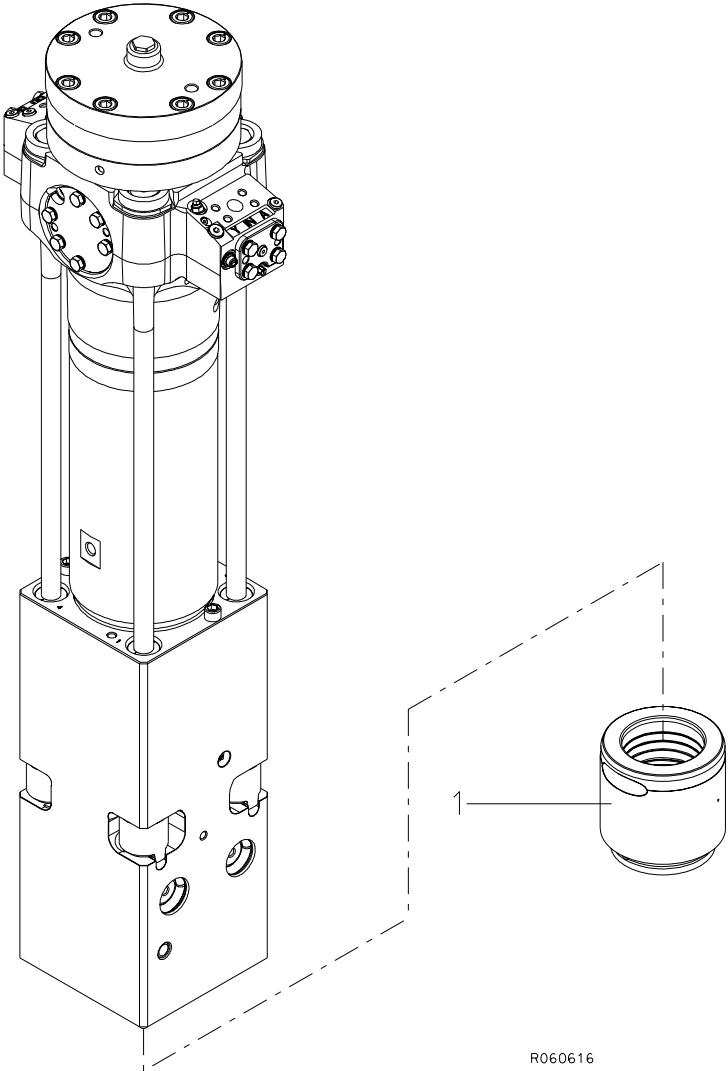
11. FRONT HEAD



R060617

Item	Description	Part no.	Specification	Note	Qty
1	Front head (incl. parts 1.2-1.3)	154858			1
1.2	Hex. socket screw	91053			2
1.3	Grease nipple	90200	R1/4		2
2	Thrust ring	155467			1
3	O-ring	90076	D229	*	1
4	Upper tool bushing	101414			1
5	Tool retaining pin	153235			2
6	Ring	153236			4
7	Wedge	40110			1
8	O-ring	90000	D24	*	1
9	Retaining pin	155553	D30		1
10	Rubber plug	104530			2
	*) Are included in seal set				

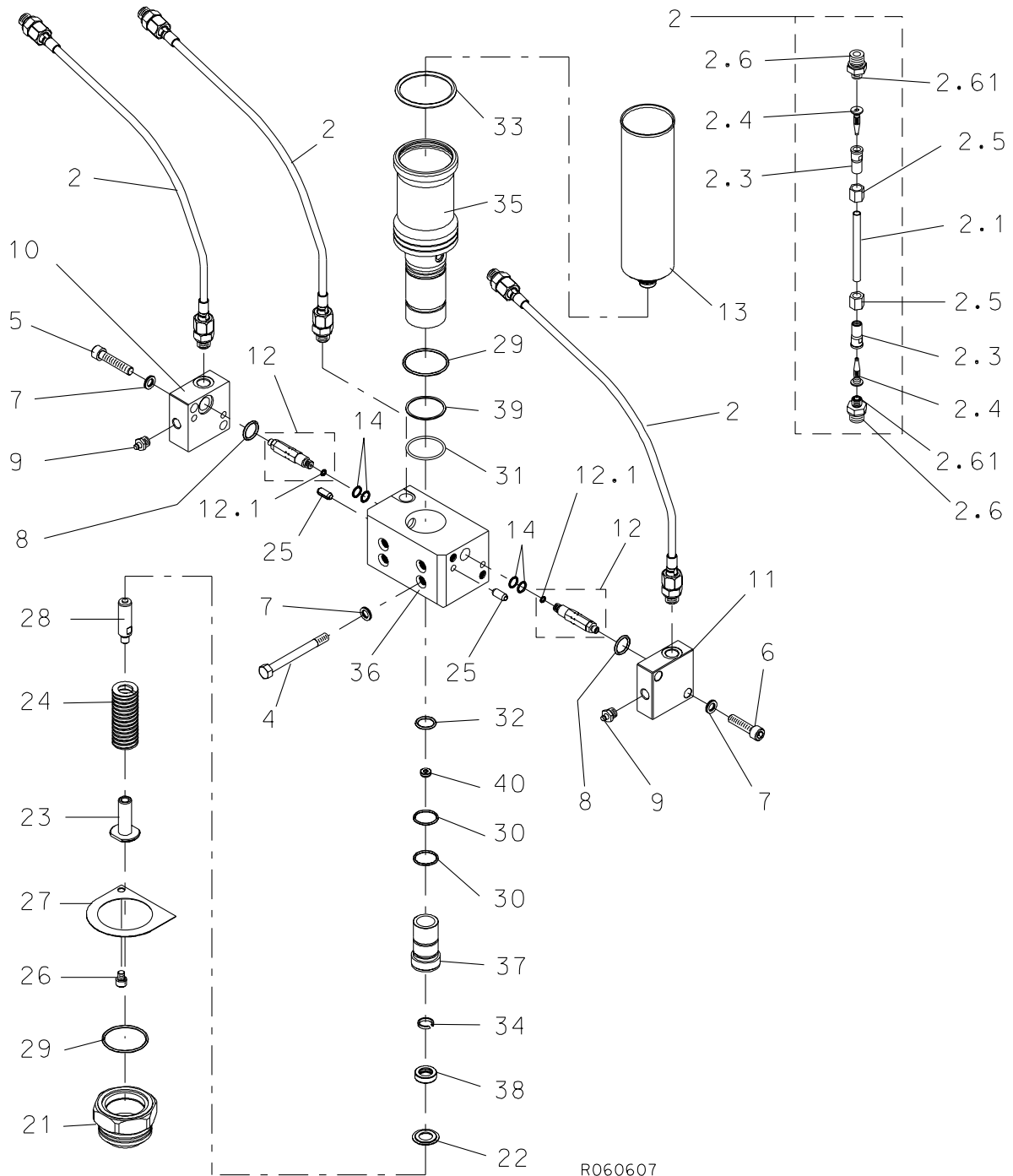
12. LOWER TOOL BUSHING



R060616

Item	Description	Part no.	Specification	Note	Qty
1	Lower tool bushing	155206			1

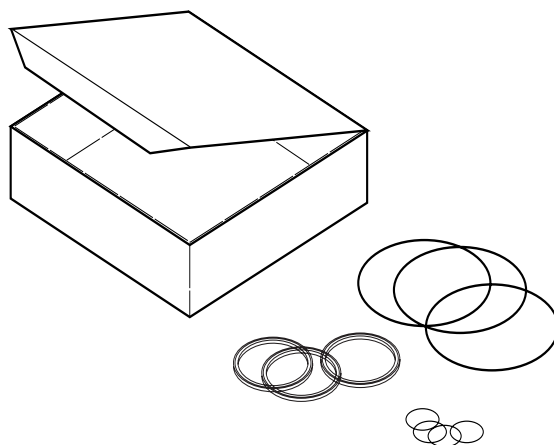
13. GREASING DEVICE



Item	Description	Part no.	Specification	Note	Qty
1	Greasing device (incl. parts 1-20)	155816			1
2	Hose assembly (incl. parts 2.1-2.6)	155858			3
2.1	Hose	951632			1
2.3	Sleeve	153035			2
2.4	Insert	153036			2
2.5	Nut	951296			2
2.6	Adapter (incl. part 2.61)	951295			2
2.61	O-ring	951293	D9	*	1

Item	Description	Part no.	Specification	Note	Qty
4	Hex. screw	155974	M10		
5	Hex. socket screw	903074	M10x50-8.8 ISO 4762		2
6	Hex. socket screw	91079	M10x40-8.8 ISO 4762		2
7	Lock washer	91037	M10 NORD-LOCK		8
8	O-ring	951416	D19	**	2
9	Grease nipple	90200	R1/4		2
10	Spacer	150576			1
11	Spacer	150572			1
12	Doser (incl. part 12.1)	158238	RGC-2 (standard)		2
12	Doser (incl. part 12.1)	158239	RGC-3		2
12	Doser (incl. part 12.1)	158240	RGC-4		2
12	Doser (incl. part 12.1)	158241	RGC-5		2
12	Doser (incl. part 12.1)	158242	RGC-6		2
12.1	O-ring	950271	D5	**	1
13	Grease cartridge	951370			1
14	O-ring	951418	D11	**	4
20	Greasing device RG532 (incl. parts 21-40)	154245			1
21	Nut	951409			1
22	Spring support	951412			1
23	Spring guide	951408			1
24	Spring	950257			1
25	Split pin	950275	8x80 ISO 8752		2
26	Hex. socket screw	951421	M8x10-8.8 ISO 4762		1
27	Lock plate	951410		**	1
28	Piston	150854			1
29	O-ring		D50	**	2
30	O-ring		D25	**	2
31	O-ring		D43	**	1
32	O-ring		D19	**	1
33	O-ring		D62	**	1
34	Guide ring		D16	**	1
35	Cartridge holder	951794			1
36	Body	951423			1
37	Cylinder	951796			1
38	Seal		D16	**	1
39	Supporting ring		D43	**	1
40	Check valve	951767			2
Kit	Service kit for greasing device	152453	Incl. seals and grease nipples		1
	*) Are included in hammers seal set				
	***) Are included in service kit				

14. SEAL SET



R060012

Item	Description	Part no.	Specification	Note	Qty
Kit	Seal set (incl. parts 1-29)	158031			1
1	O-ring	901173	D27		1
2	Wiper	901160	D119		1
3	Seal	951598	D120		1
4	Seal	150244	D118		1
5	Wiper	913001	D135		1
6	Seal	952033	D135		1
7	Seal	903325	D135		1
8	Seal	41140	D239		1
9	O-ring	901124	D17		3
10	O-ring	90076	D229		4
11	O-ring	90031	D46		1
12	O-ring	90007	D44		1
13	O-ring	90000	D24		1
14	O-ring	951293	D9		1
15	Seal	112835	D13		1
16	O-ring	90001	D20		1
17	Usit-ring	90056	D9		1
18	O-ring	910006	D23		1
19	Seal	41357	D124		1
20	O-ring	910002	D194		1
21	Seal	902668	D110		6
22	O-ring	90005	D105		2
23	O-ring	90083	D60		1
24	Seal	41375	D50		1
25	O-ring	94035	D13		1
26	O-ring	901143	D29		1
27	O-ring	951416	D19		1
28	O-ring	901186	D10		1
29	Usit-ring	901187	D18		1

Sandvik Tamrock Corp., Breakers Lahti
Taivalkatu 8, P.O. Box 165, FIN-15101 Lahti, Finland
Phone Int. +358 205 44 161, Telefax Int. +358 205 44 160
www.rammer.com