

PARTS MANUAL
PMIN12ENG.304

HYDRAULIC HAMMER
RAMMER in12 PIN
RAMMER in12 FLANGE

Serial No.

12160005-UP

12100072-UP

TABLE OF CONTENTS

1. Housing unit in12.....	4
2. Accumulator in12.....	6
3. Pressure adjusting valve in12	7
4. Body parts in12.....	8
5. Mounting in12 Pin mounted.....	10
6. Mounting in12 Flange mounted	11
7. Seal set in12	12

GENUINE RAMMER SPARE PARTS

Rammer genuine spare parts are designed and manufactured by using the latest technological knowledge and engineering skills. Rammer spare parts are made of the best available materials with the most advanced manufacturing techniques.

It is important that you use only genuine Rammer spare parts, to ensure easy operation, maintenance and repair of the product. Please note that eventual warranty claims will be handled only if you have used genuine Rammer parts in your Rammer.

LOCATION OF THE SERIAL NUMBER

It's important to make correct reference to the serial number of the product when ordering spare parts. Identification of serial number is the only proper means of maintaining and identifying parts for a specific product. The location of equipment serial number is pointed in "Operation and maintenance" manual.

SPARE PART ORDERS

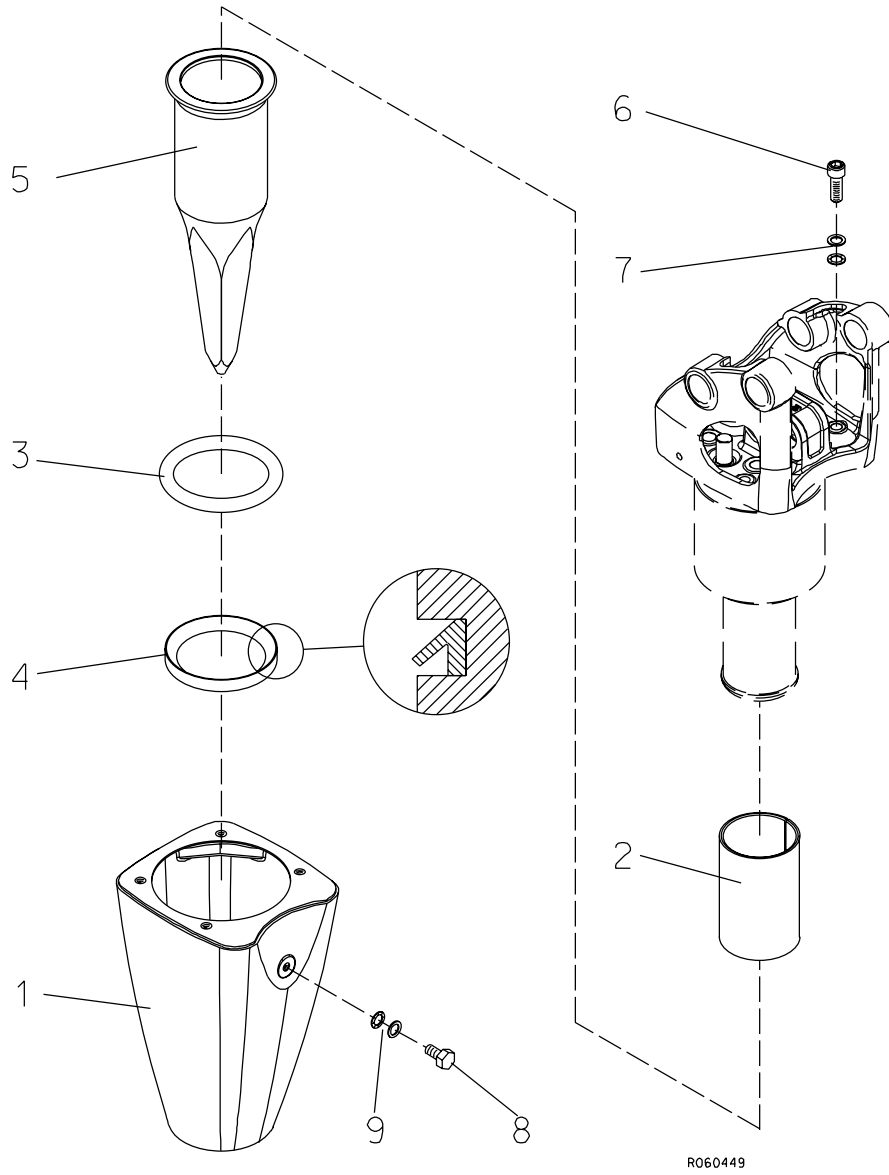
Quick spare part deliveries are secured by exact orders.

Required information:

- Name of customer and contact person
 - Order number (when available)
 - Delivery address
 - Mode of delivery (air mail etc.)
 - Required delivery date
 - Invoicing address
 - Model and serial number of the product
 - Name, number and required amount of spare parts
-

PARTS

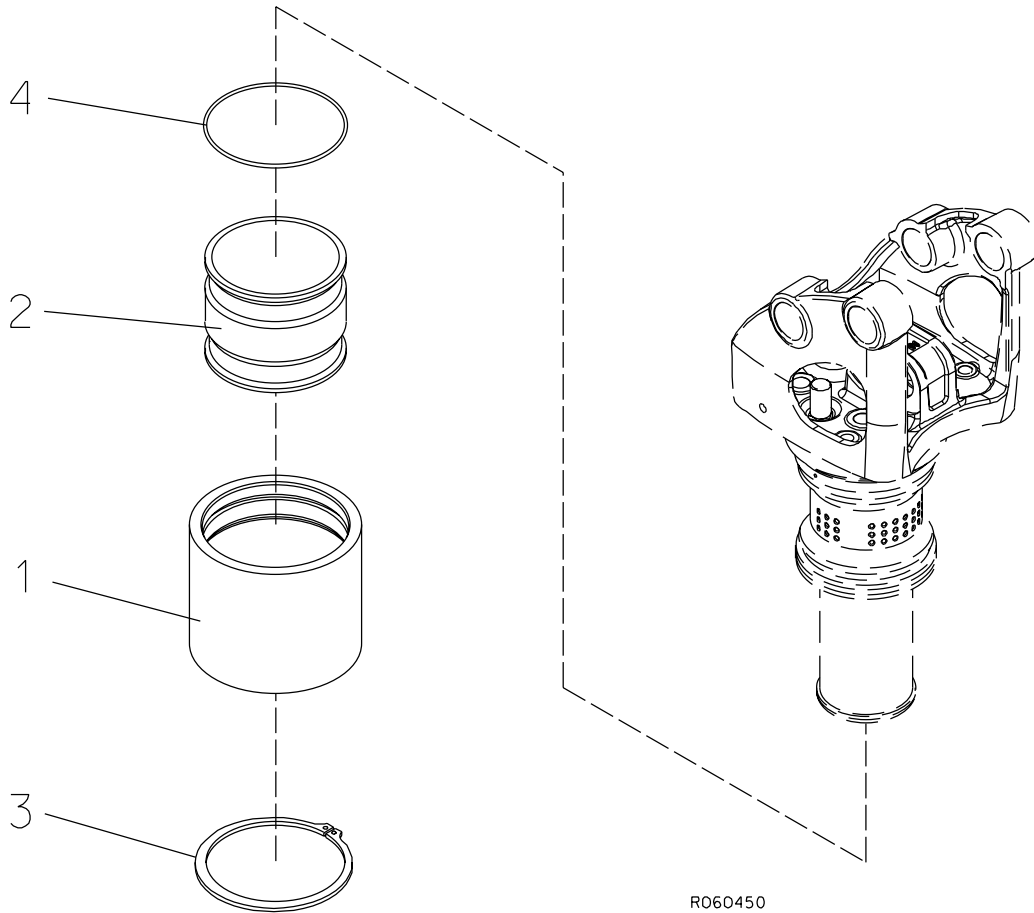
1. HOUSING UNIT IN12



HOUSING UNIT IN12

Item	Description	Part no.	Specification	Note	Qty
1	Housing	113048			1
2	Lower tool bushing	113073			1
3	Tool retaining ring	113078			1
4	Seal	113068		*	1
5	Pyramid tool	N123S1			1
6	Hex. socket screw	91006	M16x60-8.8 ISO 4762		4
7	Lock washer	90597	M16 NORD-LOCK		4
8	Hex. screw	950329	M10x12-8.8 ISO 4017		1
9	Lock washer	91037	M10 NORD-LOCK		1
Kit	Label set	153830			1
	*) Are included in seal set				

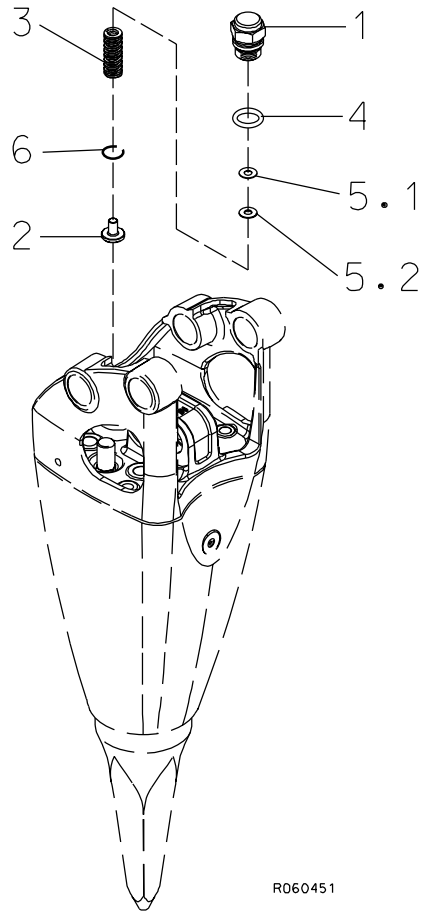
2. ACCUMULATOR IN12



R060450

Item	Description	Part no.	Specification	Note	Qty
1	Accumulator cover	113053			1
2	Membrane	154759			1
3	Retaining ring	950103	160x4 DIN 471		1
4	O-ring	910004	D149	*	1
	*) Are included in seal set				

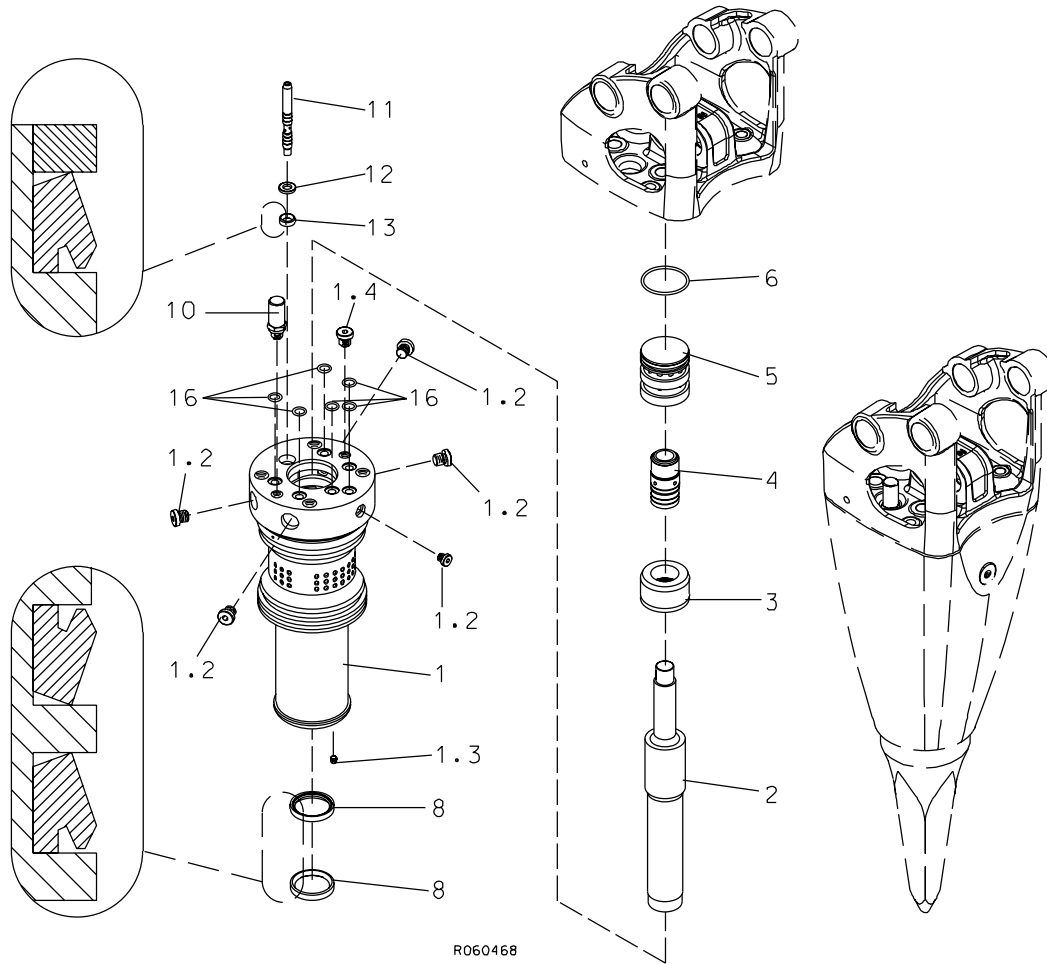
3. PRESSURE ADJUSTING VALVE IN12



R060451

Item	Description	Part no.	Specification	Note	Qty
1	Spring housing	113091			1
2	Spring guide	113006			1
3	Spring	903390	9-1208-21 DANLY		1
4	O-ring	90015	D26	*	1
5.1	Shim plate	41639	S=0.5		x
5.2	Shim plate	41640	S=1		x
6	Spring ring	902988	B25 DIN 7993		1
	*) Are included in seal set				

4. BODY PARTS IN12

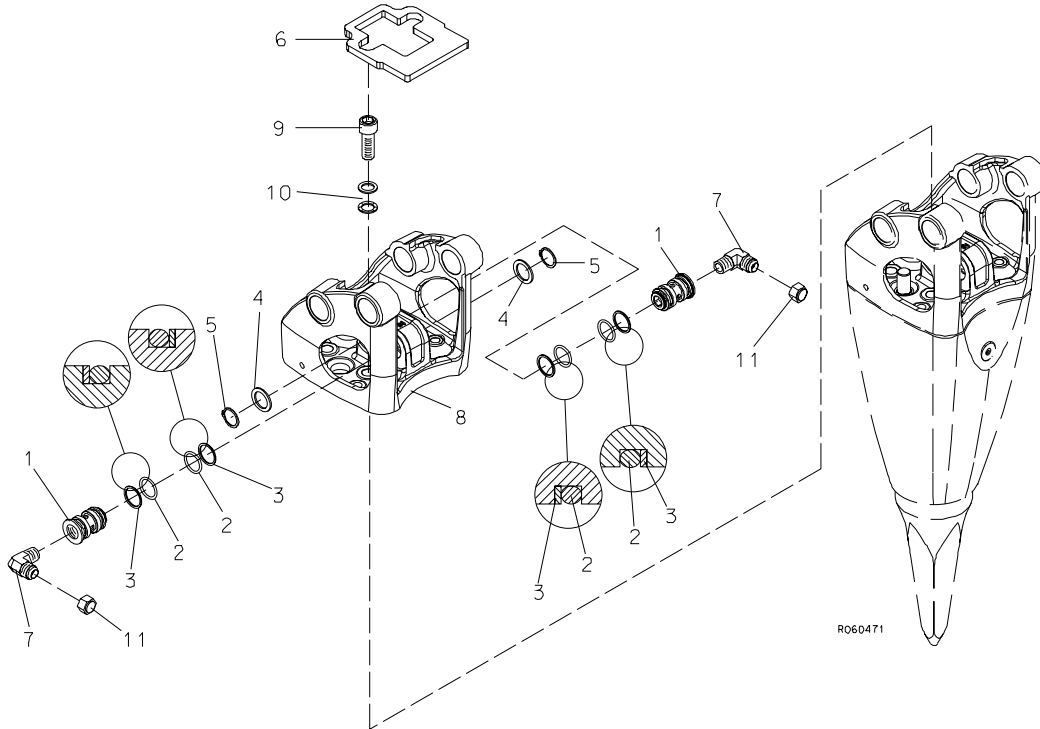


Item	Description	Part no.	Specification	Note	Qty
1	Cylinder incl. parts 1.2-1.4	113003			1
1.2	Flange plug	90403	R1/4		5
1.3	Plug	903419			1
1.4	Flange plug	41658	R1/4		1
2	Piston	113013			1
3	Steering ring	113043			1
4	Distributor	113033			1
5	Slide ring	113023			1
6	O-ring	90014	D65	*	1

BODY PARTS IN12

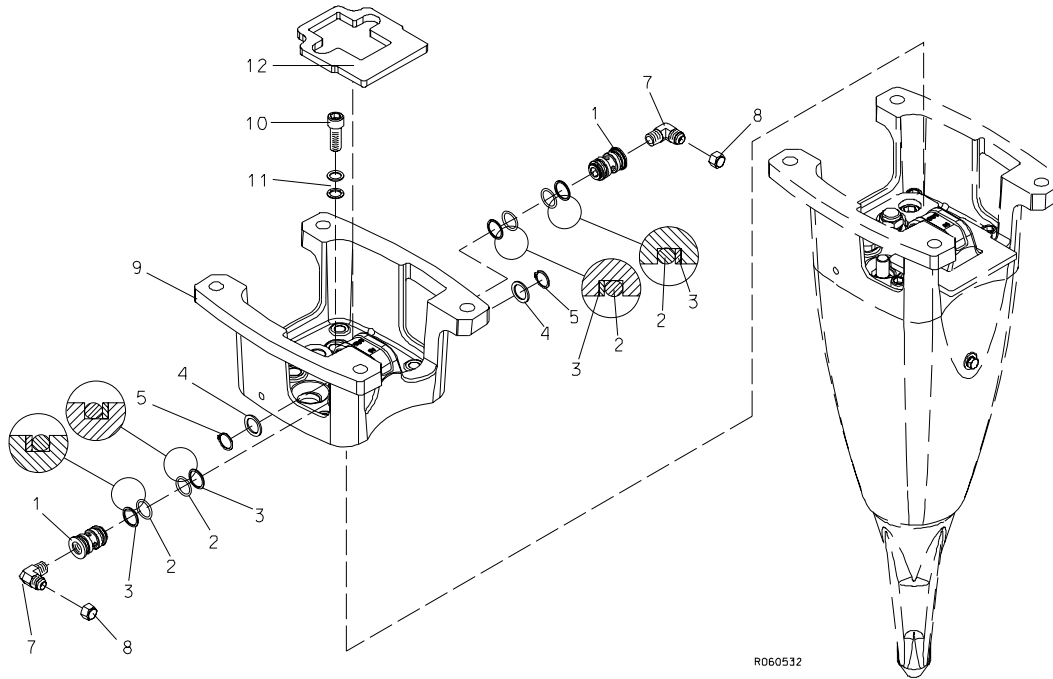
Item	Description	Part no.	Specification	Note	Qty
8	Seal	950102		*	2
10	Accumulator filling valve	903408			1
11	Spool	113083			1
12	Washer	151276			1
13	Seal	950029		*	1
16	O-ring	90011	D14	*	6
	*) Are included in seal set				

5. MOUNTING IN12 PIN MOUNTED



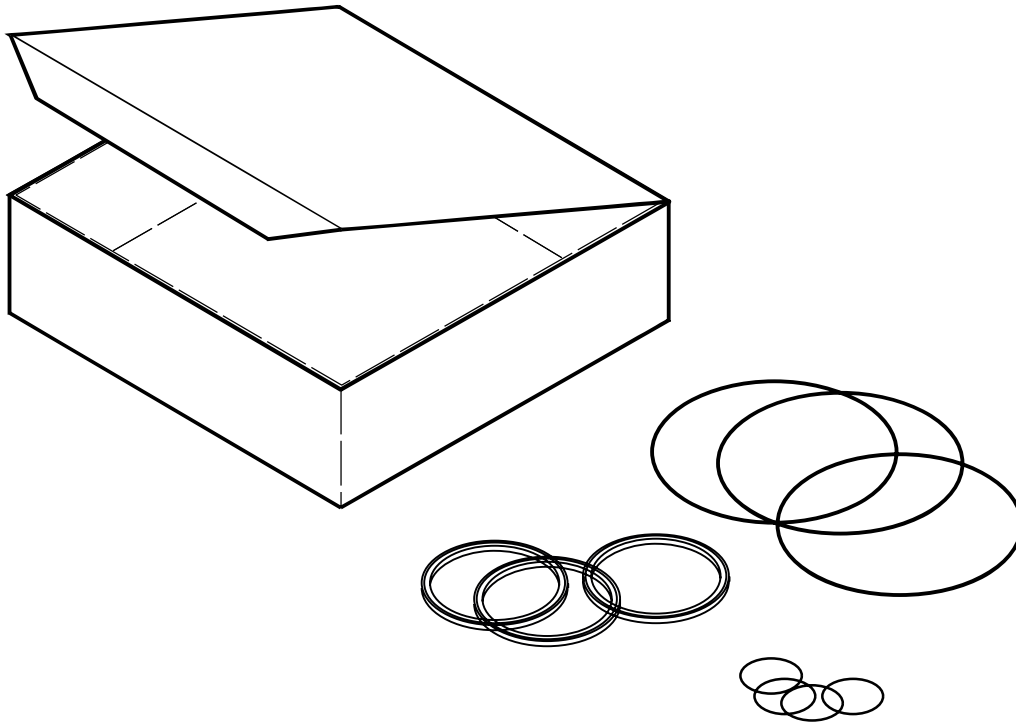
Item	Description	Part no.	Specification	Note	Qty
1	Manifold	113058			2
2	O-ring	90015	D26	*	4
3	Supporting ring	912005	D26	*	4
4	Support plate	903395	SS25x36x2.0 DIN 988		2
5	Retaining ring	950188	25x2 DIN 471		2
6	Rubber plate	153218			1
7	Elbow	951333			2
8	Mounting bracket	113028			1
9	Hex. socket screw	91064	M20x60-8.8 ISO 4762		4
10	Lock washer	91010	M20 NORD-LOCK		4
11	Cap	915030			2
	*) Are included in seal set				

6. MOUNTING IN12 FLANGE MOUNTED



Item	Description	Part no.	Specification	Note	Qty
1	Manifold	113058			2
2	O-ring	90015	D26	*	4
3	Supporting ring	912005	D26	*	4
4	Support plate	903395	SS25x36x2.0 DIN 988		2
5	Retaining ring	950188	25x2 DIN 471		2
7	Elbow	951333			2
8	Cap	915030			2
9	Mounting bracket	155540			1
10	Hex. socket screw	91064	M20x60-8.8 ISO 4762		4
11	Lock washer	91010	M20 NORD-LOCK		4
12	Rubber plate	153218			1
	*) Are included in seal set				

7. SEAL SET IN12



R060012

SEAL SET IN12

Item	Description	Part no.	Specification	Note	Qty
Kit	Seal set (incl. parts 1-8)	152446			1
1	Seal	113068			1
2	O-ring	910004	D149		1
3	O-ring	90015	D26		5
4	O-ring	90014	D65		1
5	Seal	950102			2
6	Seal	950029			1
7	O-ring	90011	D14		6
8	Supporting ring	912005	D26		4

Sandvik Tamrock Corp., Breakers Lahti
Taivalkatu 8, P.O. Box 165, FIN-15101 Lahti, Finland
Phone Int. +358 205 44 161, Telefax Int. +358 205 44 160
www.rammer.com

24-4-14028-30-196-280
24-4-14028-36-228-98