

PARTS MANUAL
PMIN9ENG.104

HYDRAULIC HAMMER
RAMMER in9 PIN
RAMMER in9 FLANGE

Serial No.
9160005-UP
9100056-UP

TABLE OF CONTENTS

1. Housing unit in9	4
2. Accumulator in9	6
3. Pressure adjusting valve in9	7
4. Body parts in9	8
5. Mounting in9 Pin mounted	10
6. Mounting in9 Flange mounted	11
7. Seal set in9	12

GENUINE RAMMER SPARE PARTS

Rammer genuine spare parts are designed and manufactured by using the latest technological knowledge and engineering skills. Rammer spare parts are made of the best available materials with the most advanced manufacturing techniques.

It is important that you use only genuine Rammer spare parts, to ensure easy operation, maintenance and repair of the product. Please note that eventual warranty claims will be handled only if you have used genuine Rammer parts in your Rammer.

LOCATION OF THE SERIAL NUMBER

It's important to make correct reference to the serial number of the product when ordering spare parts. Identification of serial number is the only proper means of maintaining and identifying parts for a specific product. The location of equipment serial number is pointed in "Operation and maintenance" manual.

SPARE PART ORDERS

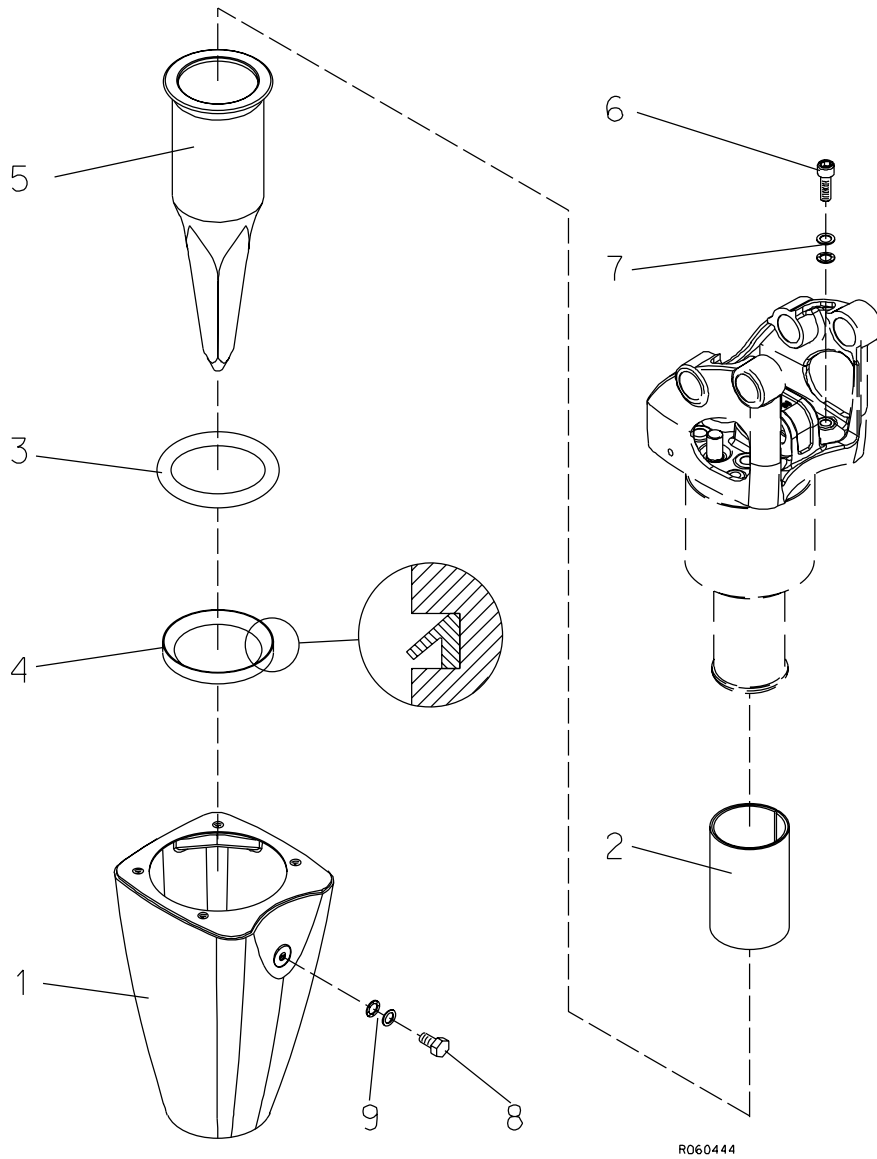
Quick spare part deliveries are secured by exact orders.

Required information:

- Name of customer and contact person
 - Order number (when available)
 - Delivery address
 - Mode of delivery (air mail etc.)
 - Required delivery date
 - Invoicing address
 - Model and serial number of the product
 - Name, number and required amount of spare parts
-

PARTS

1. HOUSING UNIT IN9

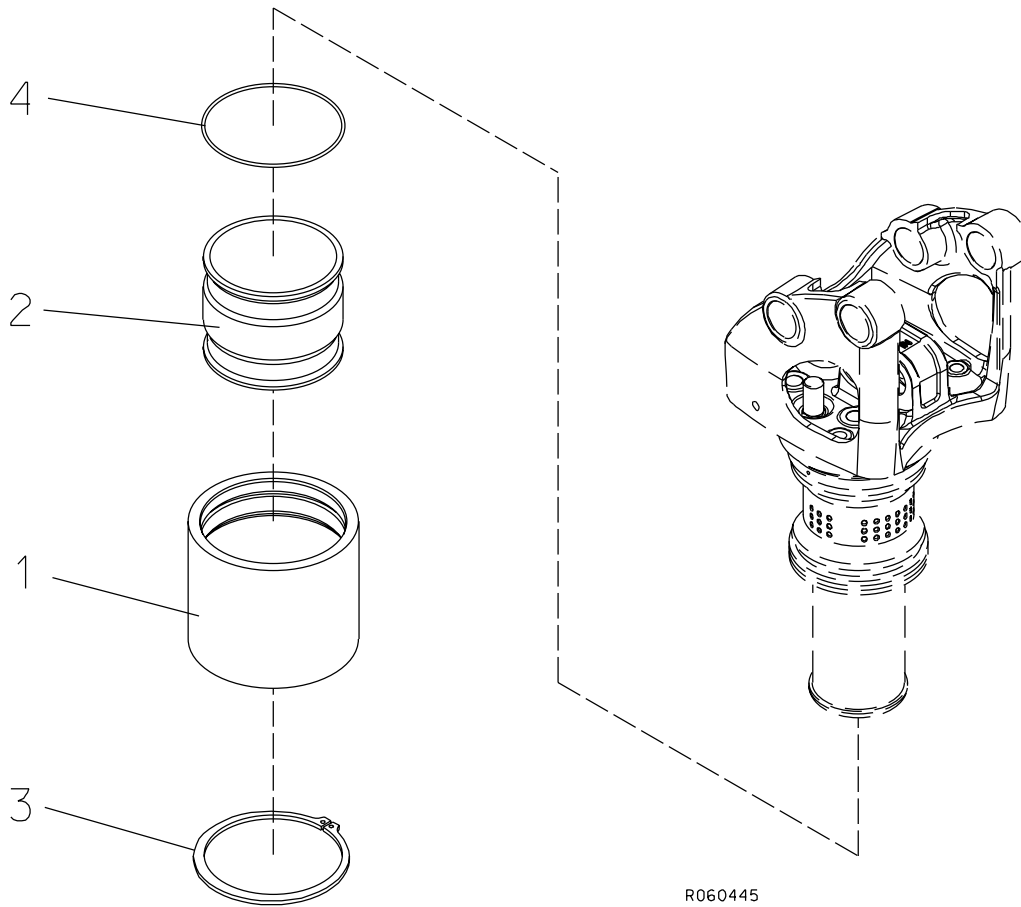


R060444

HOUSING UNIT IN9

Item	Description	Part no.	Specification	Note	Qty
1	Housing	113047			1
2	Lower tool bushing	113072			1
3	Tool retaining ring	113077			1
4	Seal	113067		*	1
5	Pyramid tool	N93S1			1
6	Hex. socket screw	91006	M16x60-8.8 ISO 4762		4
7	Lock washer	90597	M16 NORD-LOCK		4
8	Hex. screw	950329	M10x12-8.8 ISO 4017		1
9	Lock washer	91037	M10 NORD-LOCK		1
Kit	Label set	153829			1
	*) Are included in seal set				

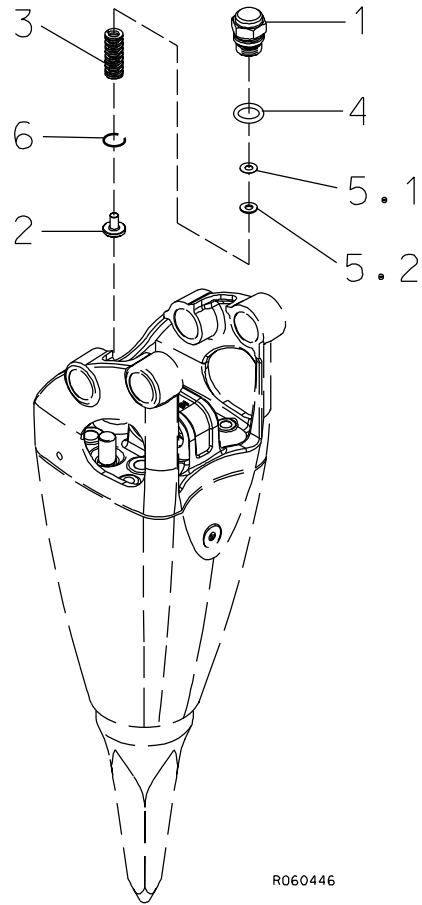
2. ACCUMULATOR IN9



R060445

Item	Description	Part no.	Specification	Note	Qty
1	Accumulator cover	113052			1
2	Membrane	113062			1
3	Retaining ring	950060	140x4 DIN 471		1
4	O-ring	910010	D134	*	1
	*) Are included in seal set				

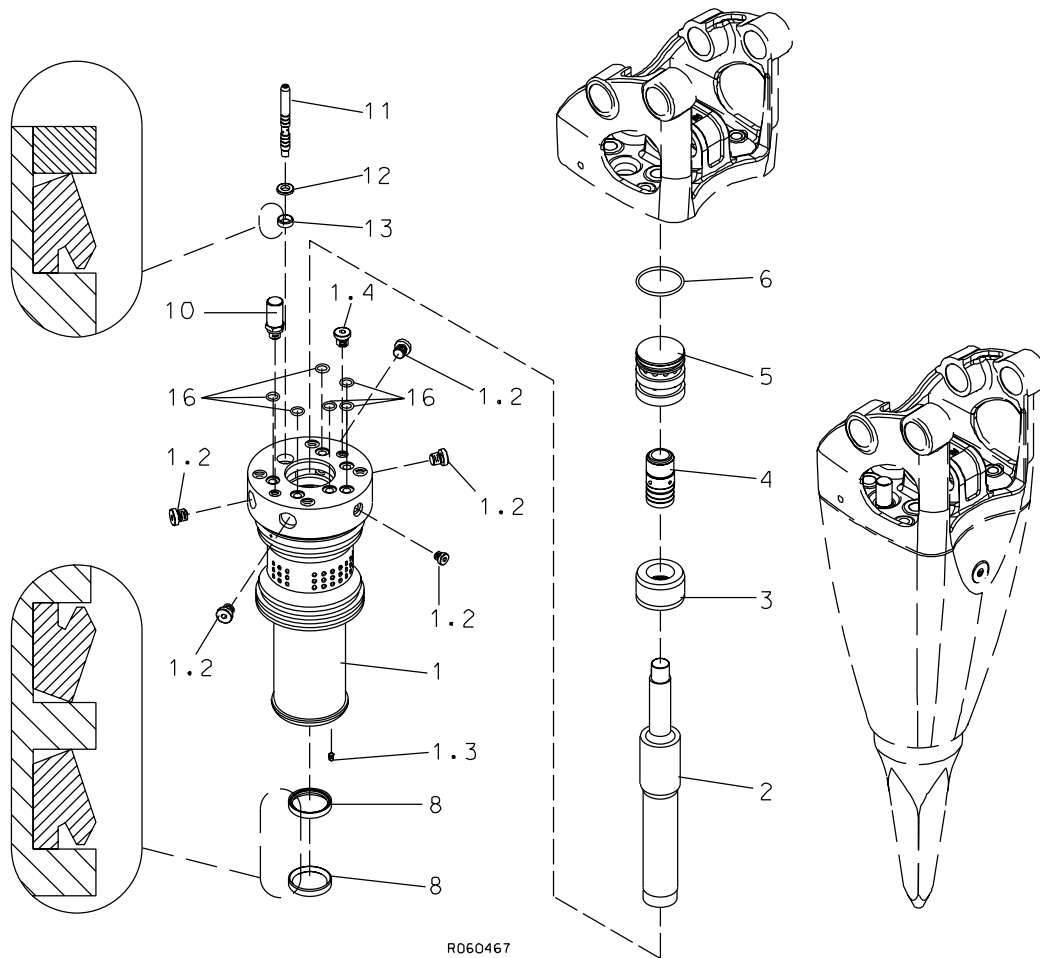
3. PRESSURE ADJUSTING VALVE IN9



R060446

Item	Description	Part no.	Specification	Note	Qty
1	Spring housing	113091			1
2	Spring guide	113006			1
3	Spring	903390	9-1208-21 DANLY		1
4	O-ring	90015	D26	*	1
5.1	Shim plate	41639	S=0.5		x
5.2	Shim plate	41640	S=1		x
6	Spring ring	902988	B25 DIN 7993		1
	*) Are included in seal set				

4. BODY PARTS IN9

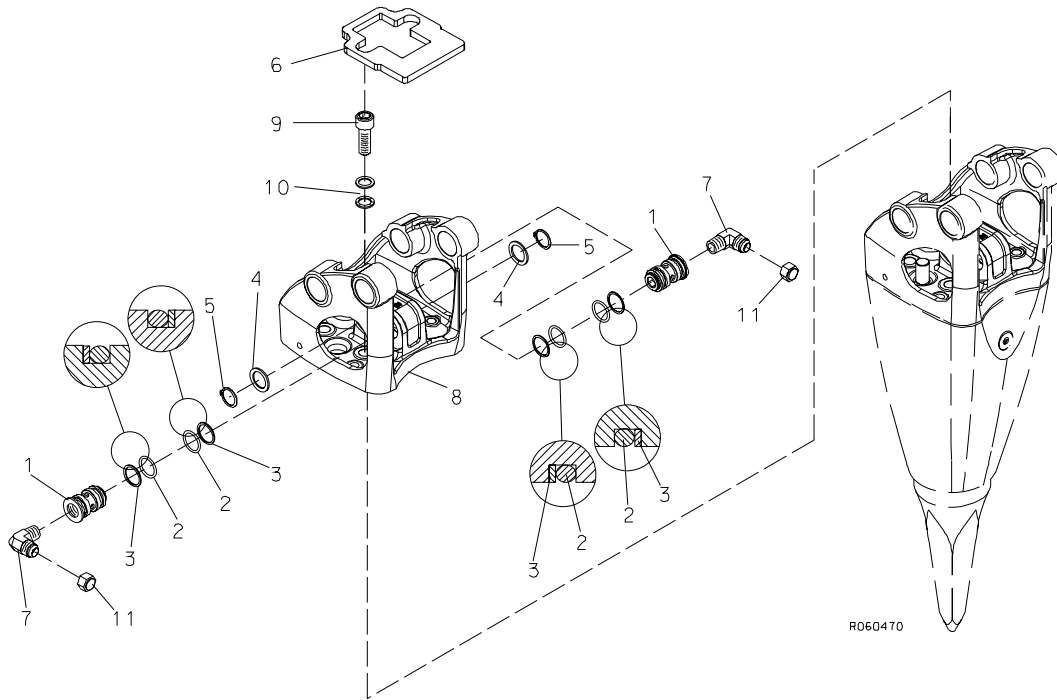


Item	Description	Part no.	Specification	Note	Qty
1	Cylinder incl. parts 1.2-1.4	113002			1
1.2	Flange plug	90403	R1/4		5
1.3	Plug	915028			1
1.4	Flange plug	41658	R1/4		1
2	Piston	113012			1
3	Steering ring	113042			1

BODY PARTS IN9

Item	Description	Part no.	Specification	Note	Qty
4	Distributor	113032			1
5	Slide ring	113022			1
6	O-ring	90038	D57	*	1
8	Seal	950059		*	2
10	Accumulator filling valve	903408			1
11	Spool	113082			1
12	Washer	151276			1
13	Seal	950029		*	1
16	O-ring	950058	D12	*	6
	*) Are included in seal set				

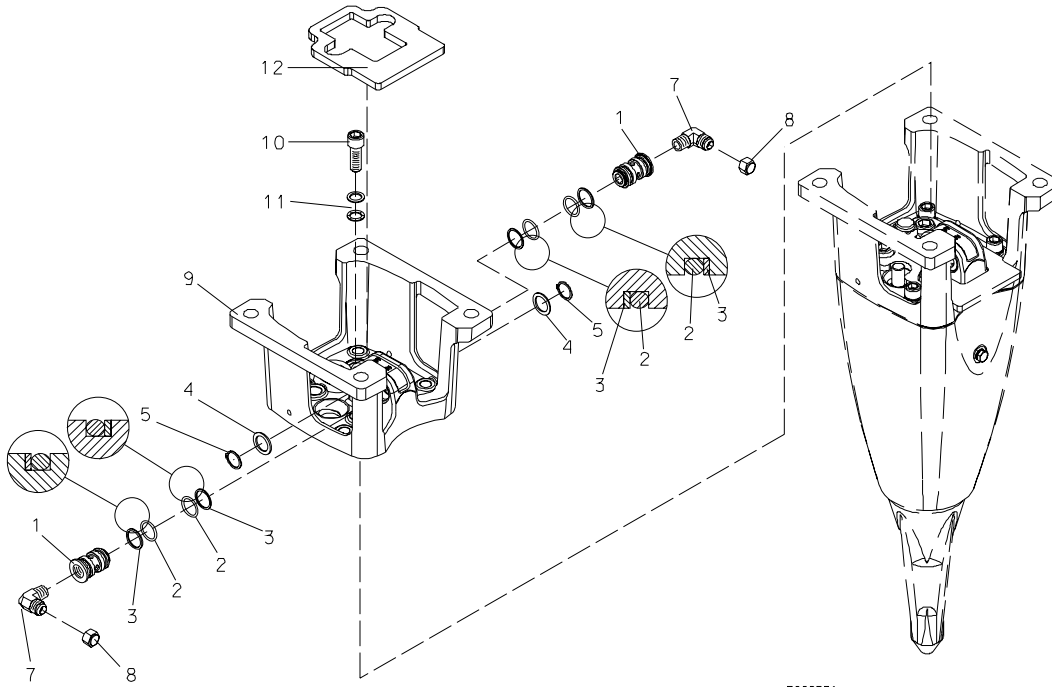
5. MOUNTING IN9 PIN MOUNTED



R060470

Item	Description	Part no.	Specification	Note	Qty
1	Manifold	113056			2
2	O-ring	90015	D26	*	4
3	Supporting ring	912005	D26	*	4
4	Support plate	903395	SS25x36x2.0 DIN 988		2
5	Retaining ring	950188	25x2 DIN 471		2
6	Rubber plate	153165			1
7	Elbow	951333			2
8	Mounting bracket	113027			1
9	Hex. socket screw	91064	M20x60-8.8 ISO 4762		4
10	Lock washer	91010	M20 NORD-LOCK		4
11	Cap	915030			2
	*) Are included in seal set				

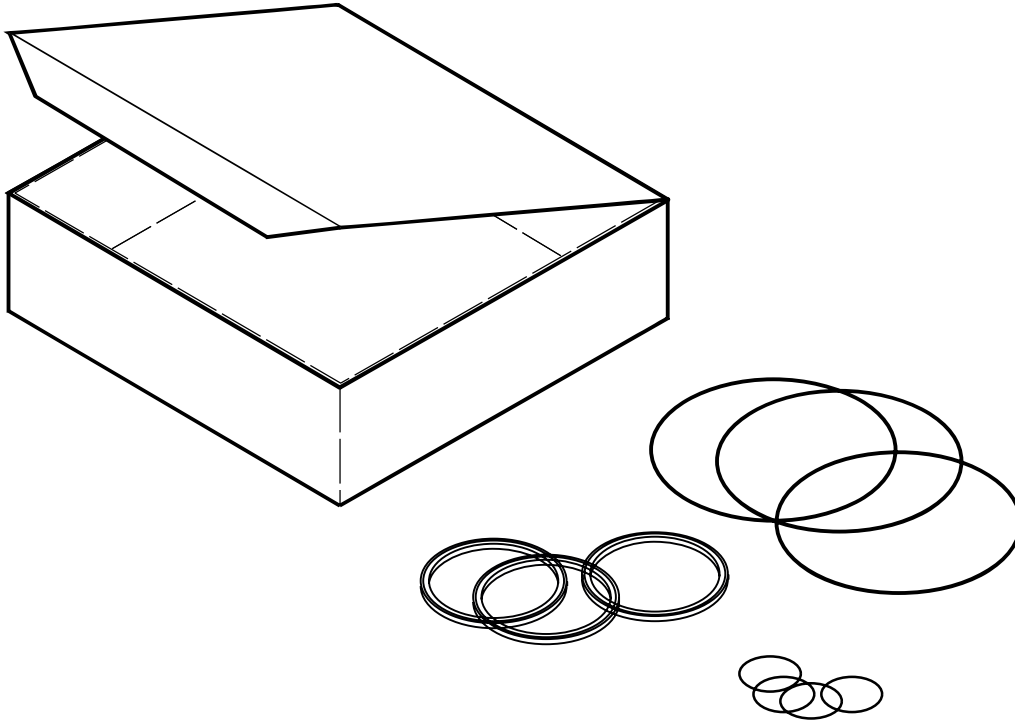
6. MOUNTING IN9 FLANGE MOUNTED



R060531

Item	Description	Part no.	Specification	Note	Qty
1	Manifold	113056			2
2	O-ring	90015	D26	*	4
3	Supporting ring	912005	D26	*	4
4	Support plate	903395	SS25x36x2.0 DIN 988		2
5	Retaining ring	950188	25x2 DIN 471		2
7	Elbow	951333			2
8	Cap	915030			2
9	Mounting bracket	155161			1
10	Hex. socket screw	91064	M20x60-8.8 ISO 4762		4
11	Lock washer	91010	M20 NORD-LOCK		4
12	Rubber plate	153165			1
	*) Are included in seal set				

7. SEAL SET IN9



R060012

SEAL SET IN9

Item	Description	Part no.	Specification	Note	Qty
Kit	Seal set (incl. parts 1-8)	152445			1
1	Seal	113067			1
2	O-ring	910010	D134		1
3	O-ring	90015	D26		5
4	O-ring	90038	D57		1
5	Seal	950059			2
6	Seal	950029			1
7	O-ring	950058	D12		6
8	Supporting ring	912005	D26		4

Sandvik Tamrock Corp., Breakers Lahti
Taivalkatu 8, P.O. Box 165, FIN-15101 Lahti, Finland
Phone Int. +358 205 44 161, Telefax Int. +358 205 44 160
www.rammer.com

24-4-14028-30-196-280
24-4-14028-33-180-189