

**PARTS MANUAL**  
**PMS22SCUENG.702**

**HYDRAULIC HAMMER**  
**RAMMER S 22**  
**RAMMER S 22 CITY**  
**RAMMER S 22 UNIRAM**

**Serial No.**

**22AAA0760-UP**

**22ADA0005-UP**

**22ATA0005-UP**

---

## TABLE OF CONTENTS

1. Housing unit S 22 . . . . .	4
2. Housing unit S 22 CITY . . . . .	5
3. Housing unit S 22 UNIRAM. . . . .	6
4. Low pressure accumulator S 22 . . . . .	7
5. High pressure accumulator S 22 . . . . .	8
6. Pressure adjusting valve S 22. . . . .	9
7. Tie rod S 22 . . . . .	10
8. Valve body and distributor S 22 . . . . .	11
9. Cylinder and piston S 22. . . . .	12
10. Front head S 22. . . . .	13
11. Lower tool bushing S 22. . . . .	14
12. Seal set S 22 . . . . .	15

---

## GENUINE RAMMER SPARE PARTS

Rammer genuine spare parts are designed and manufactured by using the latest technological knowledge and engineering skills. Rammer spare parts are made of the best available materials with the most advanced manufacturing techniques.

It is important that you use only genuine Rammer spare parts, to ensure easy operation, maintenance and repair of the product. Please note that eventual warranty claims will be handled only if you have used genuine Rammer parts in your Rammer.

## LOCATION OF THE SERIAL NUMBER

It's important to make correct reference to the serial number of the product when ordering spare parts. Identification of serial number is the only proper means of maintaining and identifying parts for a specific product. The location of equipment serial number is pointed in "Operation and maintenance" manual.

## SPARE PART ORDERS

Quick spare part deliveries are secured by exact orders.

### Required information:

- Name of customer and contact person
  - Order number (when available)
  - Delivery address
  - Mode of delivery (air mail etc.)
  - Required delivery date
  - Invoicing address
  - Model and serial number of the product
  - Name, number and required amount of spare parts
-

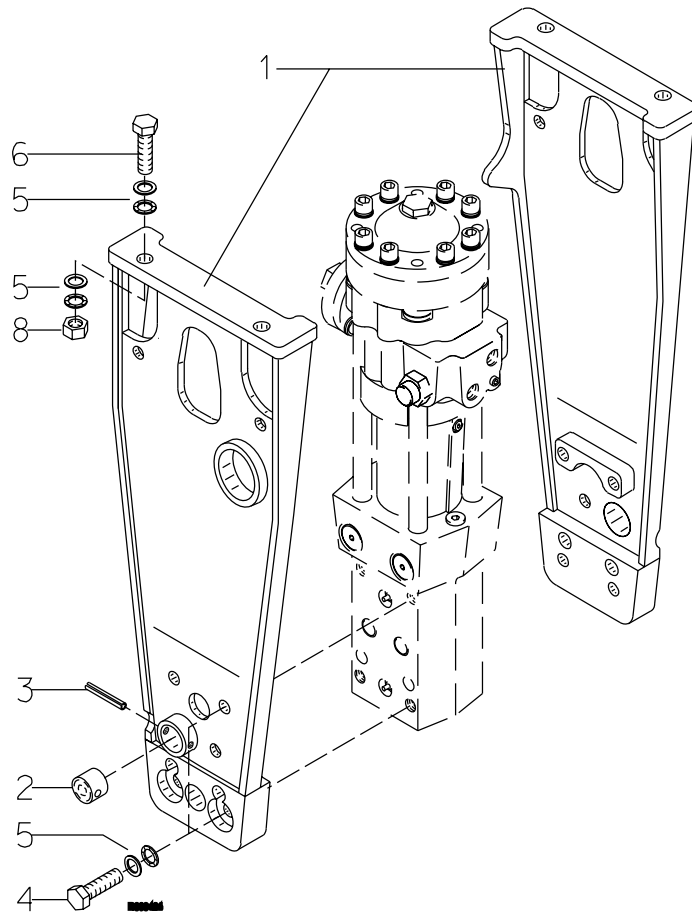
---

---

# **PARTS**

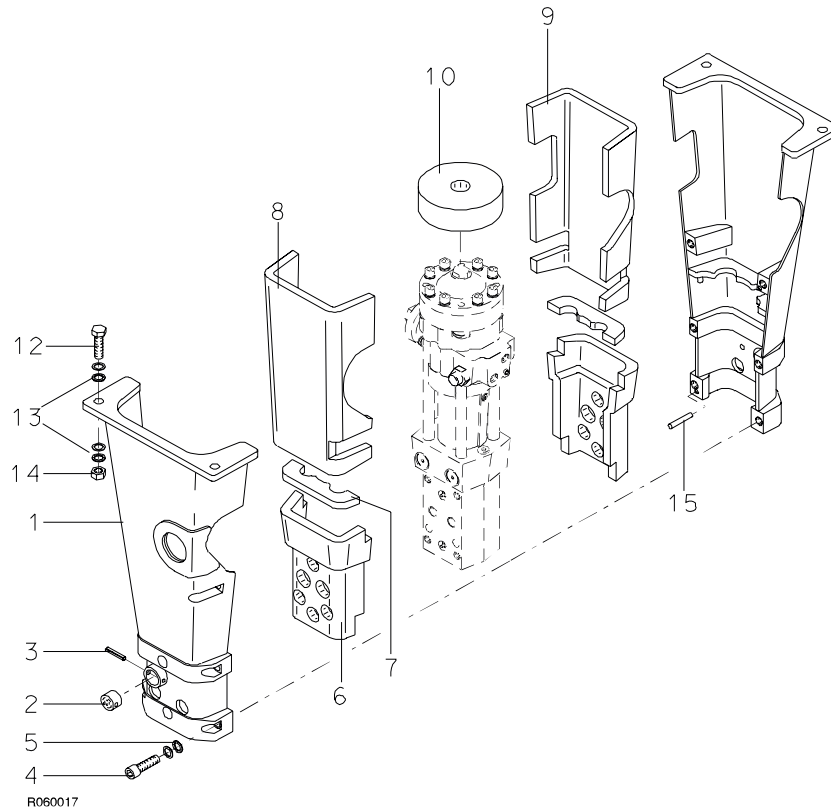
---

**1. HOUSING UNIT S 22**



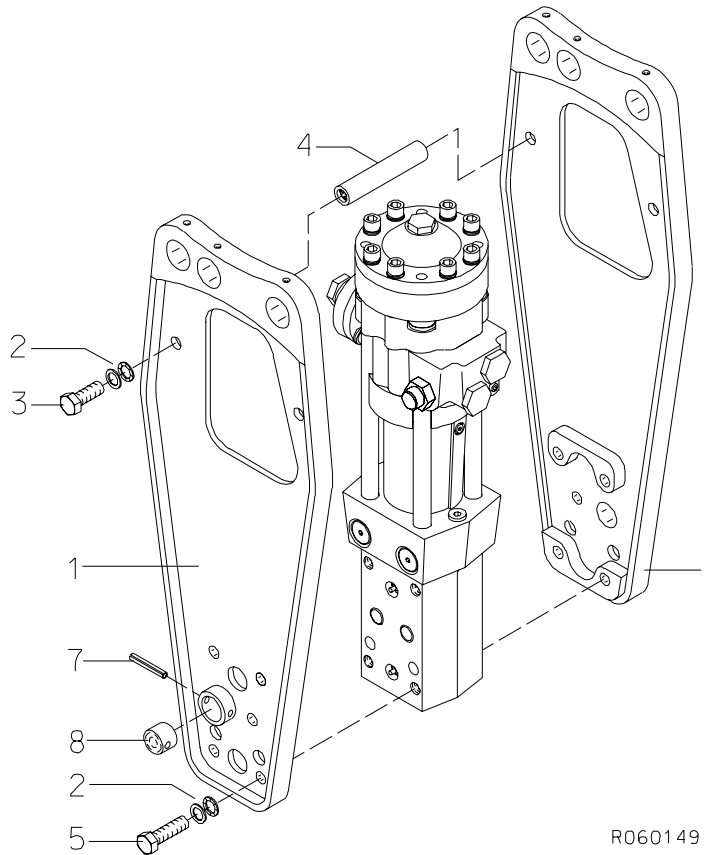
Item	Description	Part no.	Specification	Note	Qty
1	Housing plates	101617			1
2	Buffer	400214			2
3	Split pin	90345	10x70 DIN 7343		2
4	Hex. screw	900036	M20x70-10.9 DIN 931		8
5	Lock washer	91010	M20 NORD LOCK		16
6	Hex. screw	91027	M20x70-8.8 DIN 931		4
8	Hex. nut	91017	M20-8 DIN 934		4
Kit	Label set	101843			1

## 2. HOUSING UNIT S 22 CITY



Item	Description	Part no.	Specification	Note	Qty
1	Housing plates	102455			1
2	Buffer	400214			2
3	Split pin	90345			2
4	Hex. socket screw	91105	M16x70-8.8 DIN 912		6
5	Lock washer	90597	M16 NORD-LOCK		6
6	Damper	102297			2
7	Pad	102076			2
8	Upper damper, left	102259			1
9	Upper damper, right	102287			1
10	Buffer	102451			1
12	Hex. screw	91027	M20x70-8.8 DIN 931		4
13	Lock washer	91010	M20 NORD-LOCK		8
14	Hex. nut	91017	M20-8 DIN 934		4
15	Parallel pin	901101	10m6x70 DIN 6325		2
Kit	Label set	102475			1

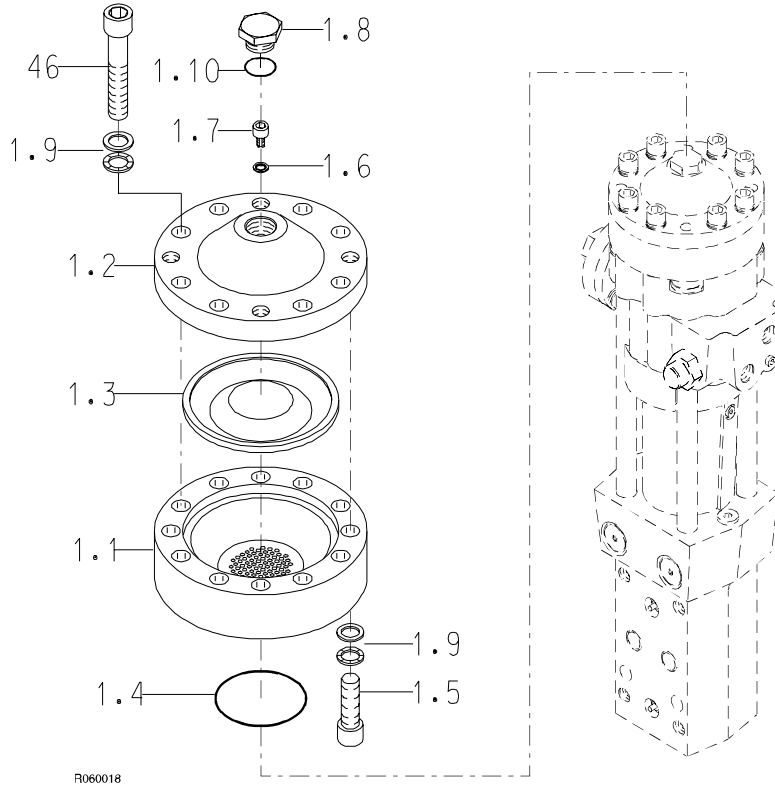
**3. HOUSING UNIT S 22 UNIRAM**



R060149

Item	Description	Part no.	Specification	Note	Qty
1	Housing plates	104108			1
2	Lock washer	91010	M20 NORD-LOCK		12
3	Hex. screw	901442	M20x50-10.9 DIN 933		4
4	Sleeve	101192			2
5	Hex. screw	900036	M20x70-10.9 DIN 931		8
7	Split pin	90345	10x70 DIN 7343		2
8	Buffer	400214			2
Kit	Label set	104113			1

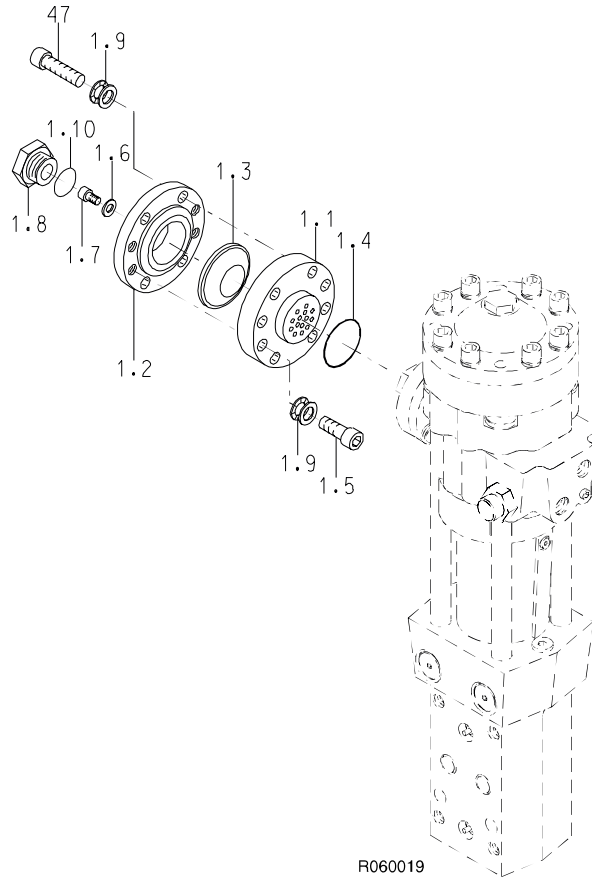
4. LOW PRESSURE ACCUMULATOR S 22



R060018

Item	Description	Part no.	Specification	Note	Qty
1	Low pressure accumulator (incl. parts 1.1-1.10)	101661			1
1.1	Accumulator bottom	101528			1
1.2	Accumulator cover	101534			1
1.3	Membrane	101519			1
1.4	O-ring	90025	D85	*	1
1.5	Hex. socket screw	91032	M16x50-8.8 DIN 912		4
1.6	Usit-ring	90056	U8.7-14-1	*	1
1.7	Filling plug	42074			1
1.8	Shield plug	400300			1
1.9	Lock washer	90597	M16 NORD-LOCK		12
1.10	O-ring	910006	D23	*	1
46	Hex. socket screw	900003	M16x100-8.8 DIN 912		8
	*) Are included in seal set				

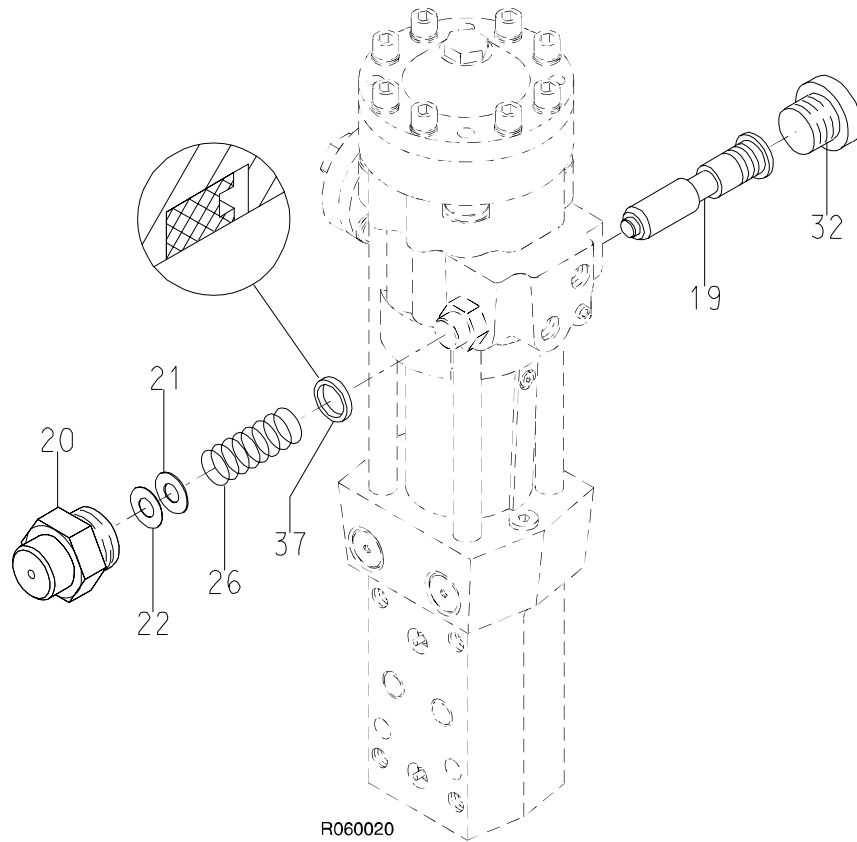
**5. HIGH PRESSURE ACCUMULATOR S 22**



Item	Description	Part no.	Specification	Note	Qty
1	High pressure accumulator (incl. parts 1.1-1.10)	102056			1
1.1	Accumulator bottom	102046			1
1.2	Accumulator cover	102049			1
1.3	Membrane	102044			1
1.4	O-ring	90038	D57	*	1
1.5	Hex. socket screw	90564	M12x40-8.8 DIN 912		4
1.6	Usit-ring	90056	U8.7-14-1	*	1
1.7	Filling plug	42074			1
1.8	Shield plug	400300			1
1.9	Lock washer	91012	M12 NORD-LOCK		8
1.10	O-ring	910006	D23	*	1
47	Hex. socket screw	91041	M12x60-8.8 DIN 912		4
	*) Are included in seal set				

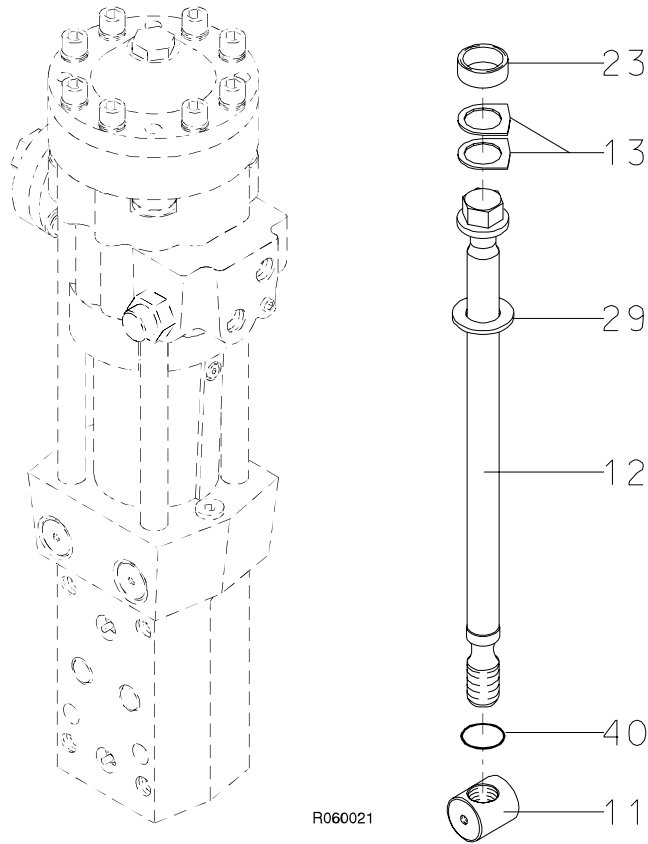


6. PRESSURE ADJUSTING VALVE S 22



Item	Description	Part no.	Specification	Note	Qty
19	Pressure adjusting spool	101559			1
20	Spring housing	400309			1
21	Shim plate	41793	S=1		X
22	Shim plate	41794	S=0.5		X
26	Spring	920008	D26x65		1
32	Flange plug	90410	R1		1
37	Seal	911010	D22	*	1
	*) Are included in seal set				

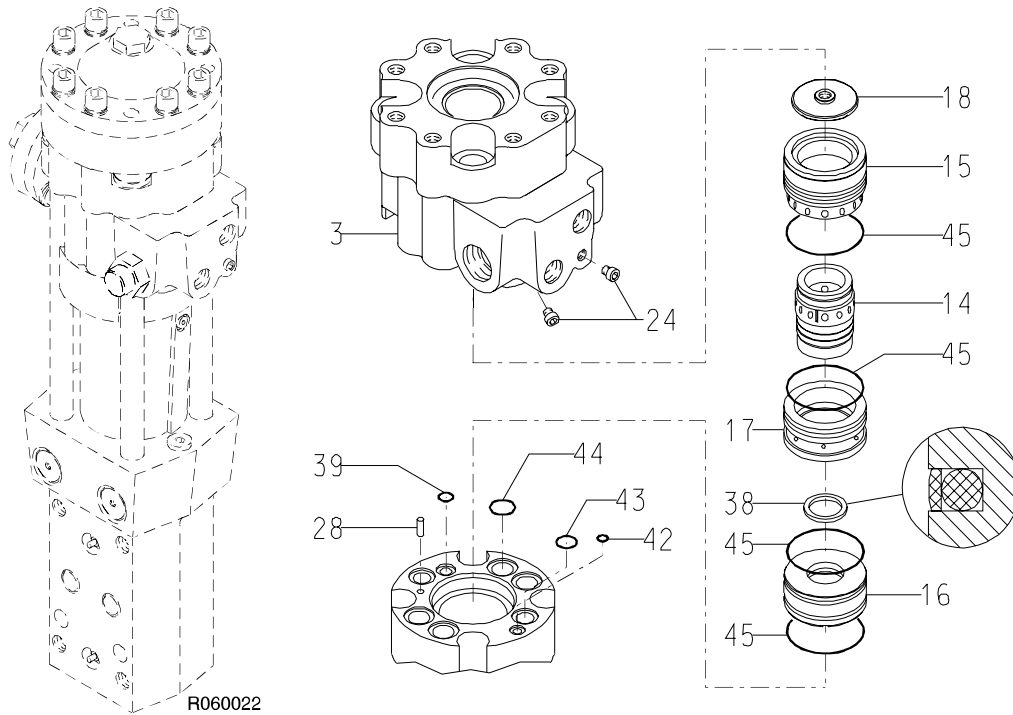
**7. TIE ROD S 22**



R060021

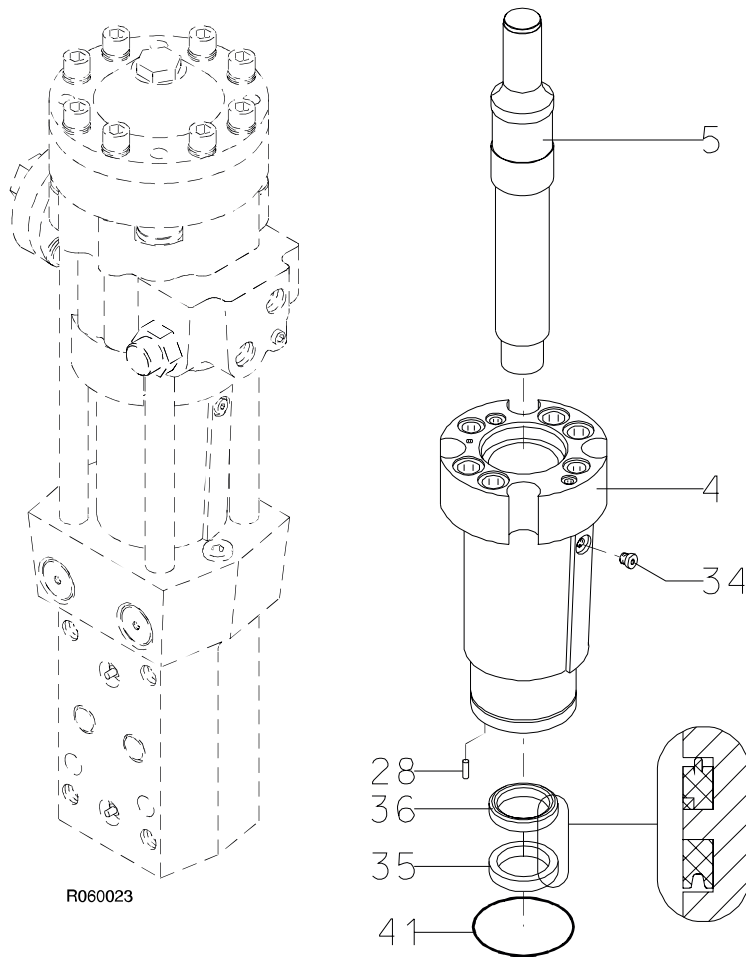
Item	Description	Part no.	Specification	Note	Qty
11	Tie rod nut	42006			4
12	Tie rod	101572			4
13	Lock plate	42007			8
23	Rubber ring	101659			4
29	Washer	903009	D27		4
40	O-ring	90015	D26	*	4
	*) Are included in seal set				

8. VALVE BODY AND DISTRIBUTOR S 22



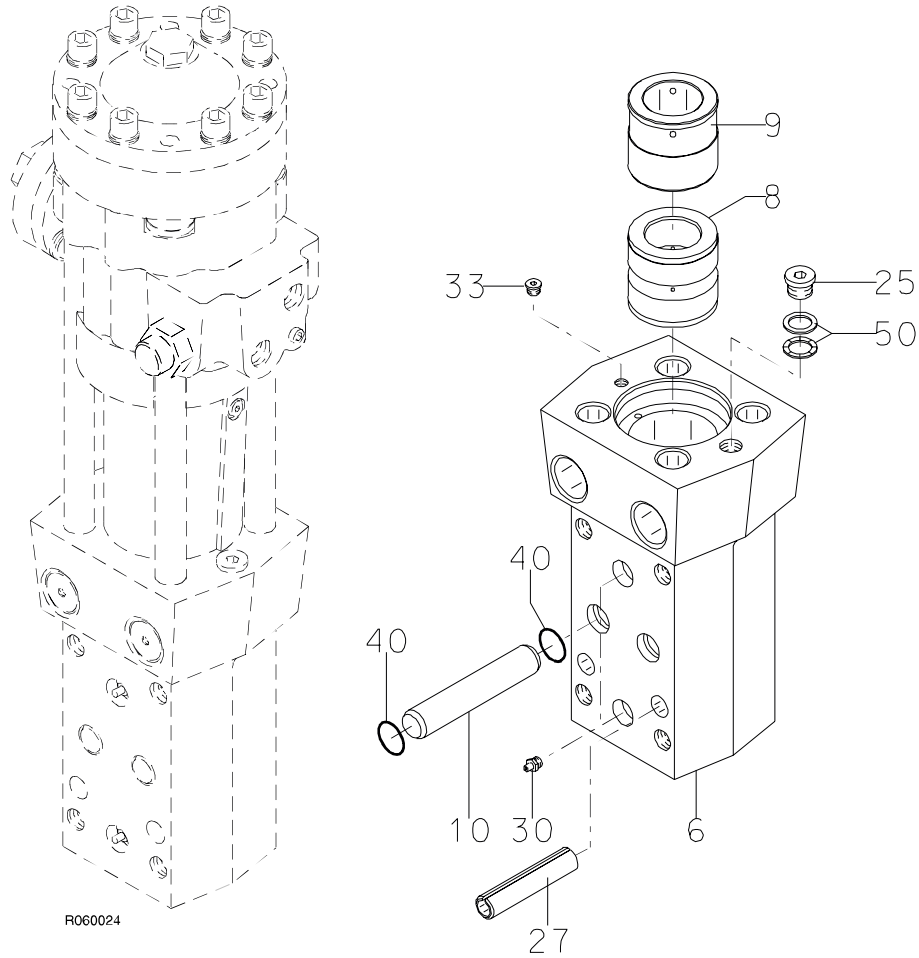
Item	Description	Part no.	Specification	Note	Qty
3	Valve body (incl. part 24)	101484			1
14	Distributor	101786			1
15	Assembly ring	101593			1
16	Steering ring	101562			1
17	Slide ring	101787			1
18	Puller plate	101560			1
24	Plug	41658			2
28	Parallel pin	90371	6m6x18 DIN 6325		2
38	Seal	94117	D36	*	1
39	O-ring	90011	D14	*	1
42	O-ring	94157	D10	*	1
43	O-ring	90001	D20	*	2
44	O-ring	90000	D24	*	4
45	O-ring	90030	D75	*	4
	*) Are included in seal set				

**9. CYLINDER AND PISTON S 22**



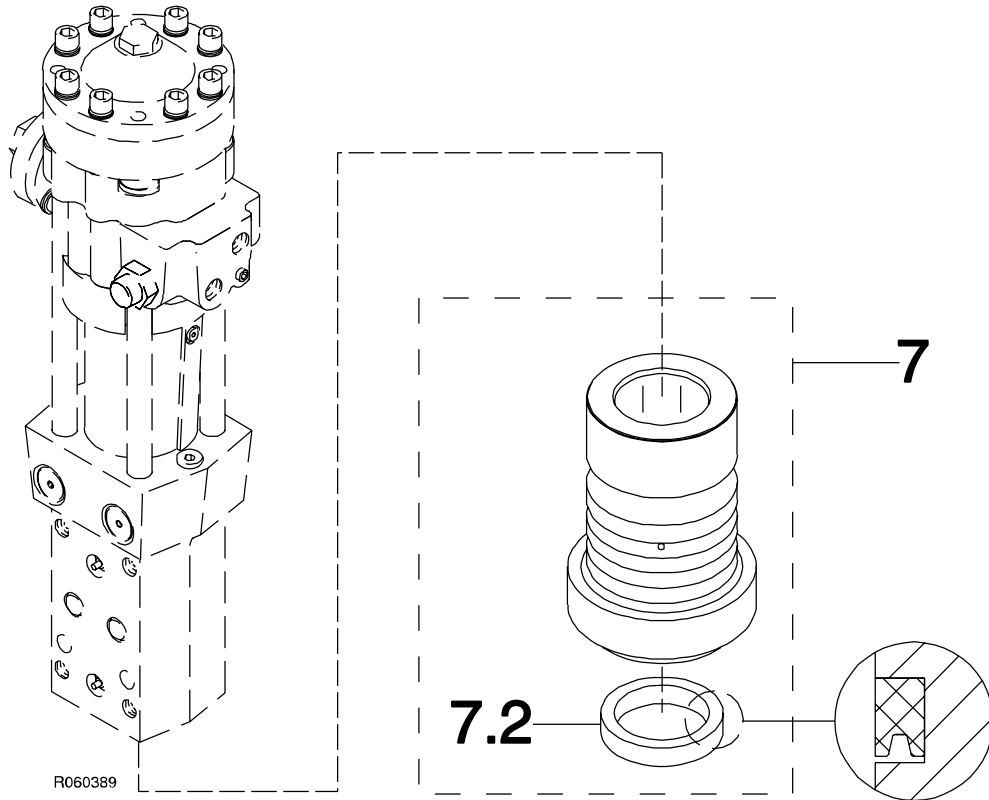
Item	Description	Part no.	Specification	Note	Qty
4	Cylinder (incl. part 34)	101492			1
5	Piston	101507			1
28	Parallel pin	90371	6m6x18 DIN 6325		2
34	Flange plug	93203	R1/8		2
35	Seal	901140	D50	*	1
36	Seal	901141	D50	*	1
41	O-ring	94068	D95	*	1
	*) Are included in seal set				

10. FRONT HEAD S 22



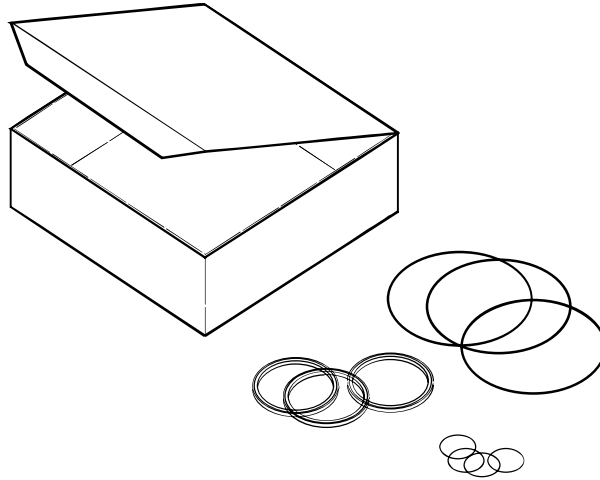
Item	Description	Part no.	Specification	Note	Qty
6	Front head (incl. parts 25, 30, 33 and 50)	101457			1
8	Upper tool bushing	101548			1
9	Thrust ring	101549			1
10	Tool retaining pin	101584	D28		2
25	Flange plug	90424	R1/2		1
27	Split pin	904007	21x100 DIN 1481		2
30	Grease nipple	90201	R1/8		2
33	Flange plug	90444	R3/8		1
40	O-ring	90015	D26	*	4
50	Lock washer	91010	M20 NORD-LOCK		1
	*) Are included in seal set				

**11. LOWER TOOL BUSHING S 22**



Item	Description	Part no.	Specification	Note	Qty
7	Lower tool bushing (incl. part 7.2)	101663			1
7.2	Seal	901140	D50	*	1
	*) Are included in seal set				

## 12. SEAL SET S 22



R060012

Item	Description	Part no.	Specification	Note	Qty
Kit	Seal set (incl. parts 1-15)	400710			1
1	Seal	901140	D50		2
2	Seal	901141	D50		1
3	Seal	911010	D22		1
4	Seal	94117	D36		1
5	O-ring	90011	D14		1
6	O-ring	90015	D26		8
7	O-ring	94068	D95		1
8	O-ring	94157	D10		1
9	O-ring	90001	D20		2
10	O-ring	90000	D24		4
11	O-ring	90030	D75		4
12	O-ring	90025	D85		1
13	Usit-ring	90056	U8.7-14-1		2
14	O-ring	910006	D23		2
15	O-ring	90038	D57		1







**Sandvik Tamrock Corp., Breakers Lahti**  
**Taivalkatu 8, P.O. Box 165, FIN-15101 Lahti, Finland**  
**Phone Int. +358 205 44 161, Telefax Int. +358 205 44 160**  
**[www.rammer.com](http://www.rammer.com)**