

**PARTS MANUAL**

**PMS27ENG.203**

**HYDRAULIC HAMMER**  
**RAMMER S 27**  
**RAMMER S 27 CITY**  
**RAMMER S 27 UNIRAM**

**SERIAL NO.**

**27AAA0234-UP**

**27ADA0231-UP**

**27ATA0005-UP**

---

## TABLE OF CONTENTS

1. Housing unit S 27 . . . . .	4
2. Housing unit S 27 CITY . . . . .	5
3. Housing unit S 27 UNIRAM. . . . .	6
4. Low pressure accumulator S 27 . . . . .	7
5. High pressure accumulator S 27 . . . . .	8
6. Pressure adjusting valve S 27. . . . .	9
7. Tie rod S 27 . . . . .	10
8. Valve body and distributor S 27 . . . . .	11
9. Cylinder and piston S 27. . . . .	12
10. Front head S 27. . . . .	13
11. Lower tool bushing S 27. . . . .	14
12. Seal set S 27 . . . . .	15

---

## GENUINE RAMMER SPARE PARTS

Rammer genuine spare parts are designed and manufactured by using the latest technological knowledge and engineering skills. Rammer spare parts are made of the best available materials with the most advanced manufacturing techniques.

It is important that you use only genuine Rammer spare parts, to ensure easy operation, maintenance and repair of the product. Please note that eventual warranty claims will be handled only if you have used genuine Rammer parts in your Rammer.

## LOCATION OF THE SERIAL NUMBER

It's important to make correct reference to the serial number of the product when ordering spare parts. Identification of serial number is the only proper means of maintaining and identifying parts for a specific product. The location of equipment serial number is pointed in "Operation and maintenance" manual.

## SPARE PART ORDERS

Quick spare part deliveries are secured by exact orders.

### Required information:

- Name of customer and contact person
  - Order number (when available)
  - Delivery address
  - Mode of delivery (air mail etc.)
  - Required delivery date
  - Invoicing address
  - Model and serial number of the product
  - Name, number and required amount of spare parts
-

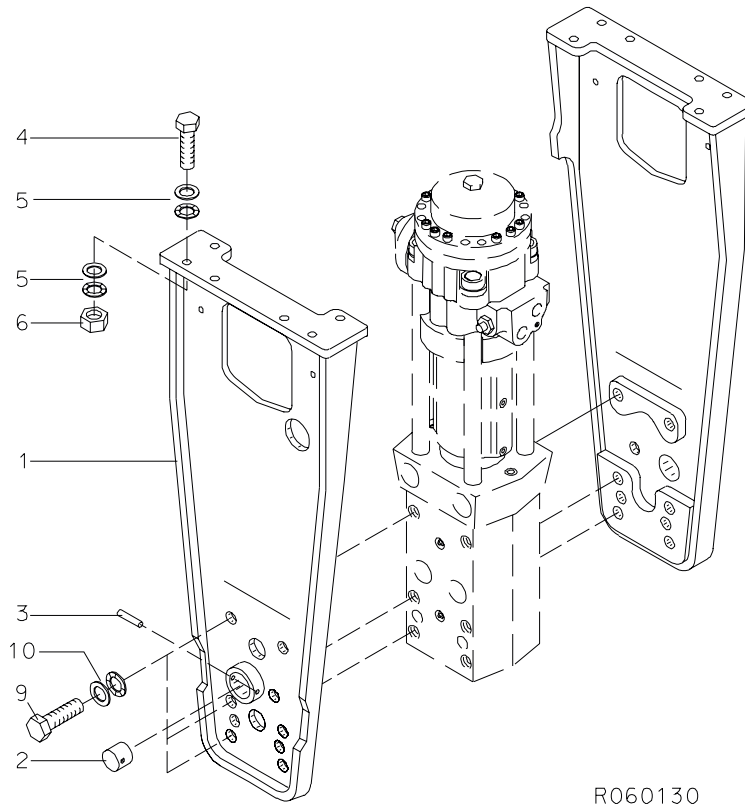
---

---

# **PARTS**

---

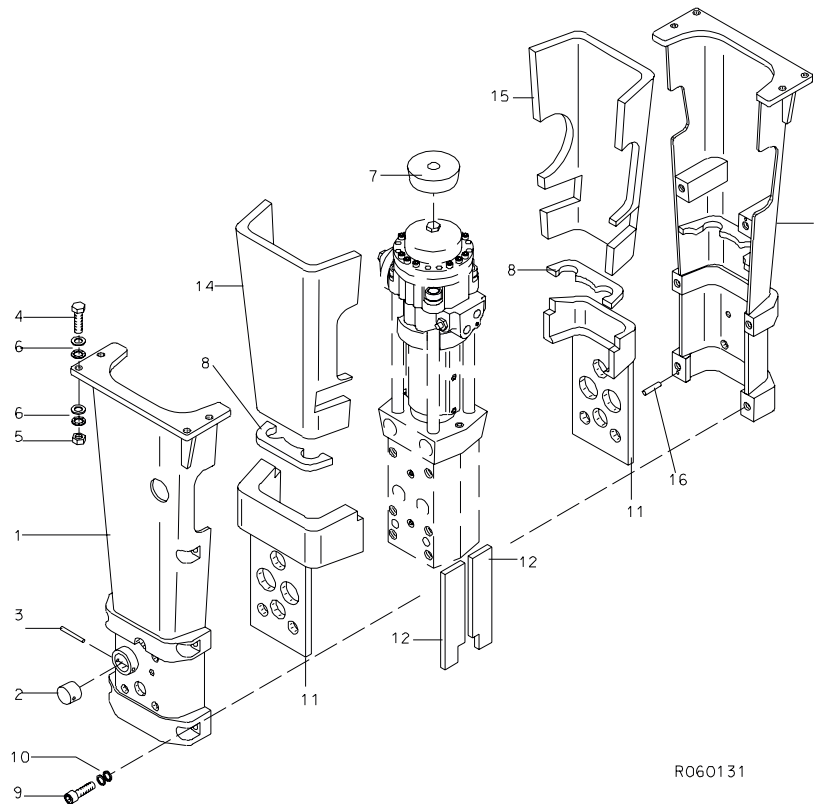
**1. HOUSING UNIT S 27**



R060130

Item	Description	Part no.	Specification	Note	Qty
1	Housing plates	103269			1
2	Buffer	400430			2
3	Split pin	904015	10x100 DIN 1481		2
4	Hex. screw	90566	M16x70-8.8 DIN 931		12
5	Lock washer	90597	M16 NORD-LOCK		24
6	Hex. nut	91000	M16-8 DIN 934		12
9	Hex. screw	902264	M30x100-10.9 DIN 931		12
10	Lock washer	90598	M33 NORD-LOCK		12
Kit	Label set	103798			1

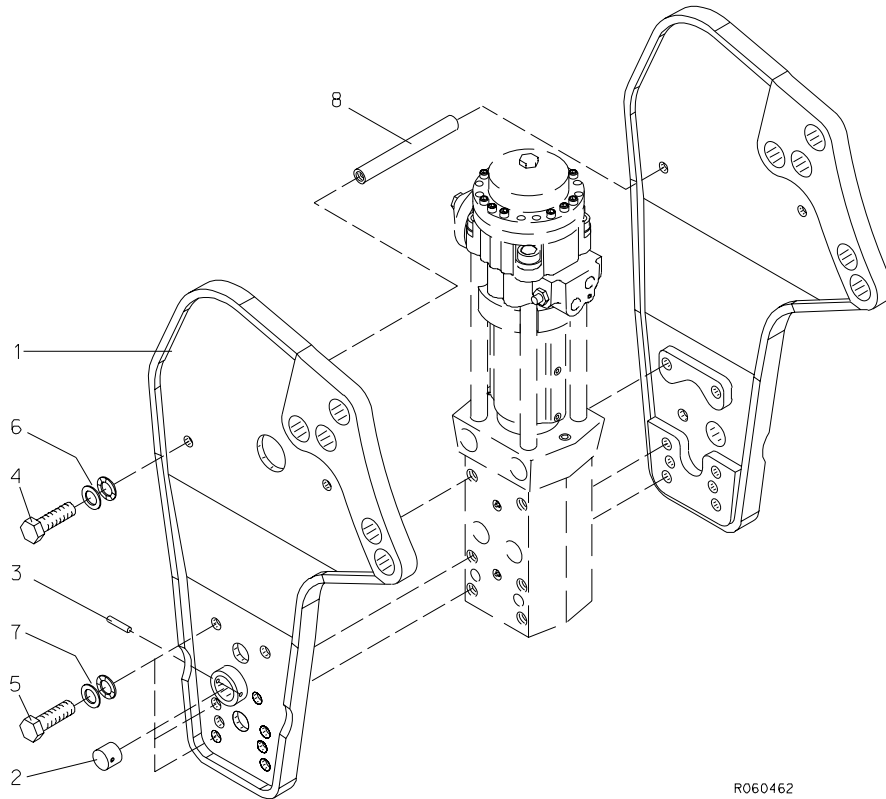
## 2. HOUSING UNIT S 27 CITY



R060131

Item	Description	Part no.	Specification	Note	Qty
1	Housing plates	103690			1
2	Buffer	400430			2
3	Split pin	904015	10x100 DIN 1481		2
4	Hex. screw	91022	M20x90-8.8 DIN 931		8
5	Hex. nut	91017	M20-8 DIN 934		8
6	Lock washer	91010	M20 NORD-LOCK		16
7	Buffer	300908			1
8	Pad	103729			2
9	Hex. socket screw	91058	M24x90-8.8 DIN 912		6
10	Lock washer	91038	M24 NORD-LOCK		6
11	Damper	103732			2
12	Damper plate	103733			4
14	Upper damper, left	103716			1
15	Upper damper, right	103715			1
16	Parallel pin	901101	10m6x70 DIN 6325		2
Kit	Label set	103799			1

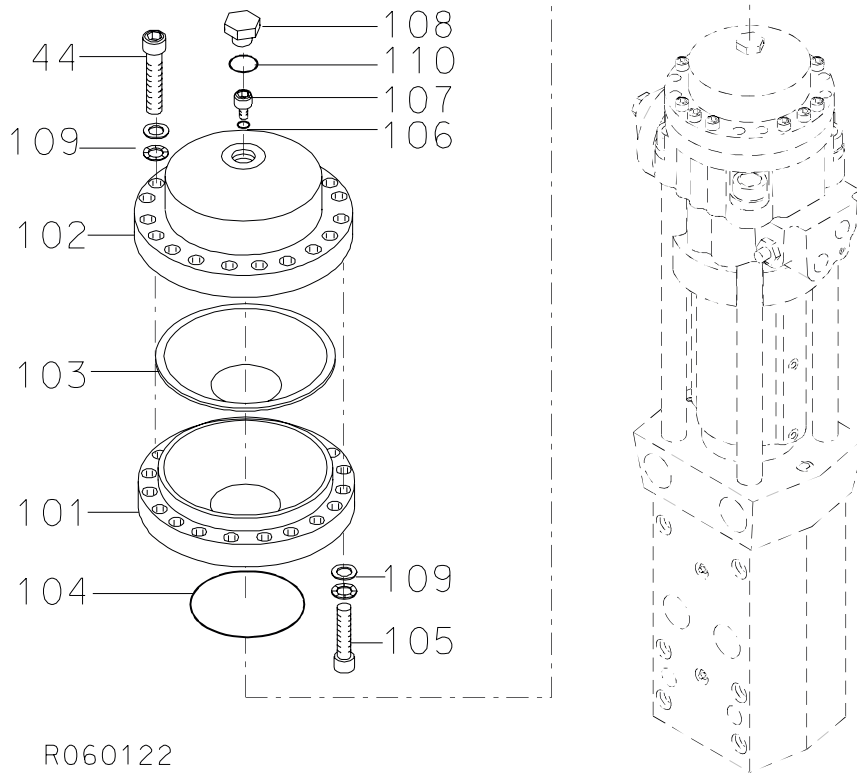
**3. HOUSING UNIT S 27 UNIRAM**



R060462

Item	Description	Part no.	Specification	Note	Qty
1	Housing plates	152973			1
2	Buffer	400430			2
3	Split pin	904015	10x100 DIN 1481		2
4	Hex. screw	901444	M24x60-10.9 ISO 4017		4
5	Hex. screw	902264	M30x100-10.9 ISO 4017		12
6	Lock washer	91038	M24 NORD-LOCK		4
7	Lock washer	90598	M33 NORD-LOCK		12
8	Spacer tube	103457			2
Kit	Label set	153834			1

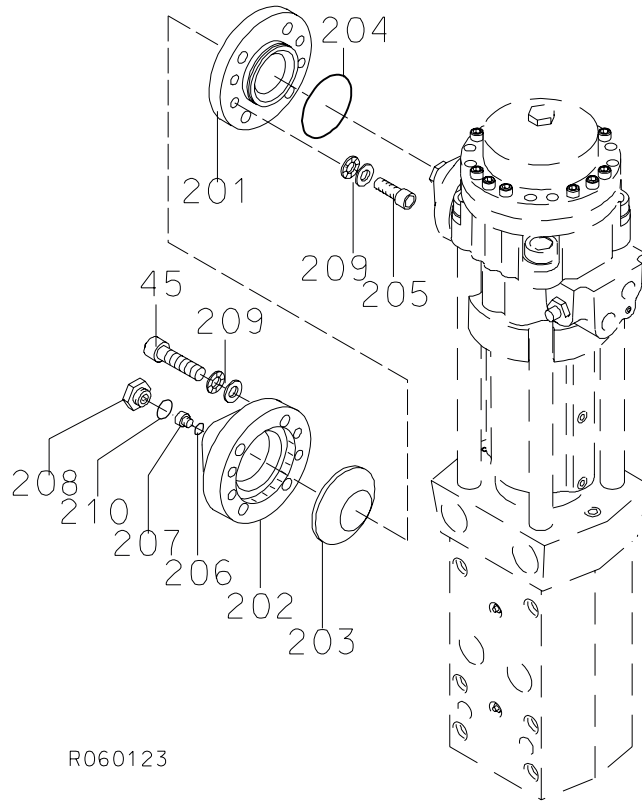
4. LOW PRESSURE ACCUMULATOR S 27



R060122

Item	Description	Part no.	Specification	Note	Qty
1	Low pressure accumulator (incl. parts 101-110)	104076			1
101	Accumulator bottom	100233			1
102	Accumulator cover	100232			1
103	Membrane	20604			1
104	O-ring	90022	D129	*	1
105	Hex. socket screw	91105	M16x70-8.8 DIN 912		8
106	Usit-ring	90056	D9	*	1
107	Filling plug	42074			1
108	Shield plug	400300			1
109	Lock washer	90597	M16 NORD-LOCK		20
110	O-ring	910006	D23	*	1
44	Hex. socket screw	900004	M16x90-8.8 DIN 912		12
	* ) Are included in seal set				

**5. HIGH PRESSURE ACCUMULATOR S 27**

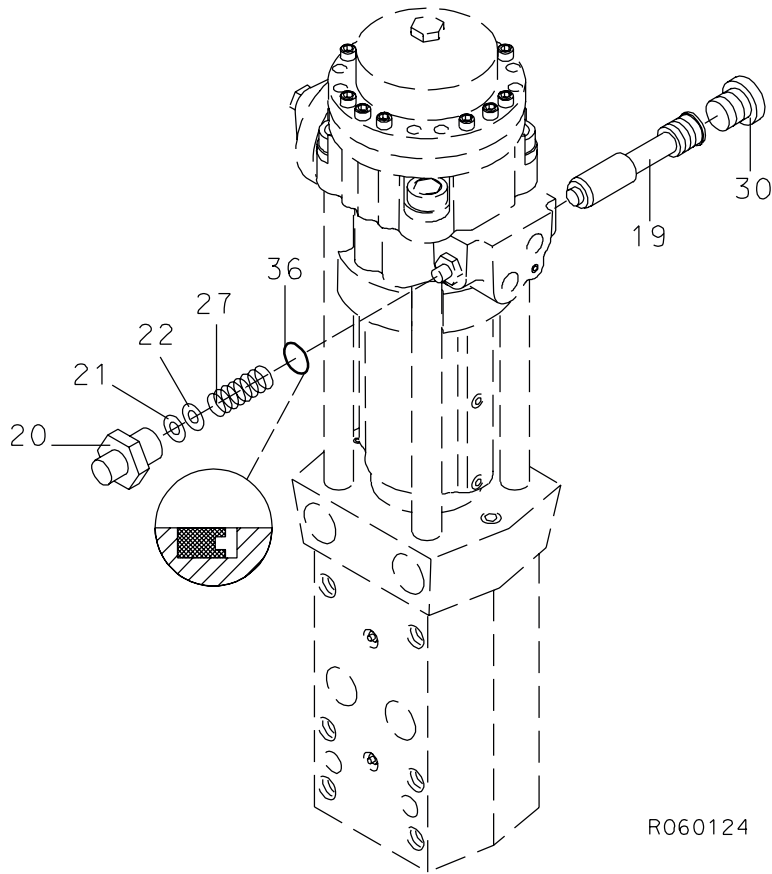


R060123

Item	Description	Part no.	Specification	Note	Qty
2	High pressure accumulator (incl. parts 201-210)	200201			1
201	Accumulator bottom	200199			1
202	Accumulator cover	200200			1
203	Membrane	41713			1
204	O-ring	90025	D85	*	1
205	Hex. socket screw	91005	M16x45-8.8 DIN 912		4
206	Usit-ring	90056	D9	*	1
207	Filling plug	42074			1
208	Shield plug	400300			1
209	Lock washer	90597	M16 NORD-LOCK		8
210	O-ring	910006	D23	*	1
45	Hex. socket screw	91105	M16x70-8.8 DIN 912		4
	*) Are included in seal set				

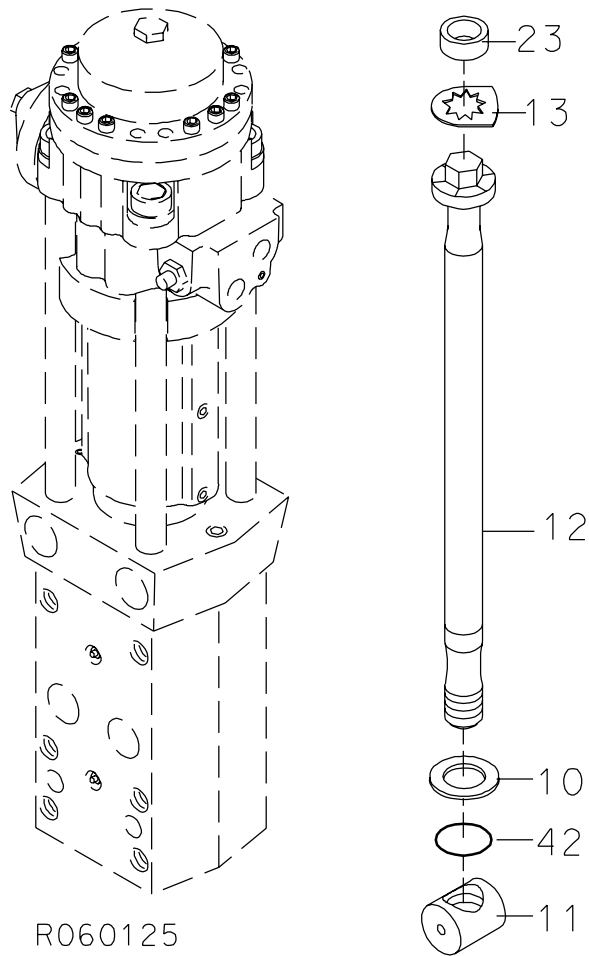


**6. PRESSURE ADJUSTING VALVE S 27**



Item	Description	Part no.	Specification	Note	Qty
19	Pressure adjusting spool	300304			1
20	Spring housing	400309			1
21	Shim plate	41793	S=1		X
22	Shim plate	41794	S=0.5		X
27	Spring	920008	D26x65		1
30	Flange plug	90401	R3/4		1
36	Seal	911010	D22	*	1
	*) Are included in seal set				

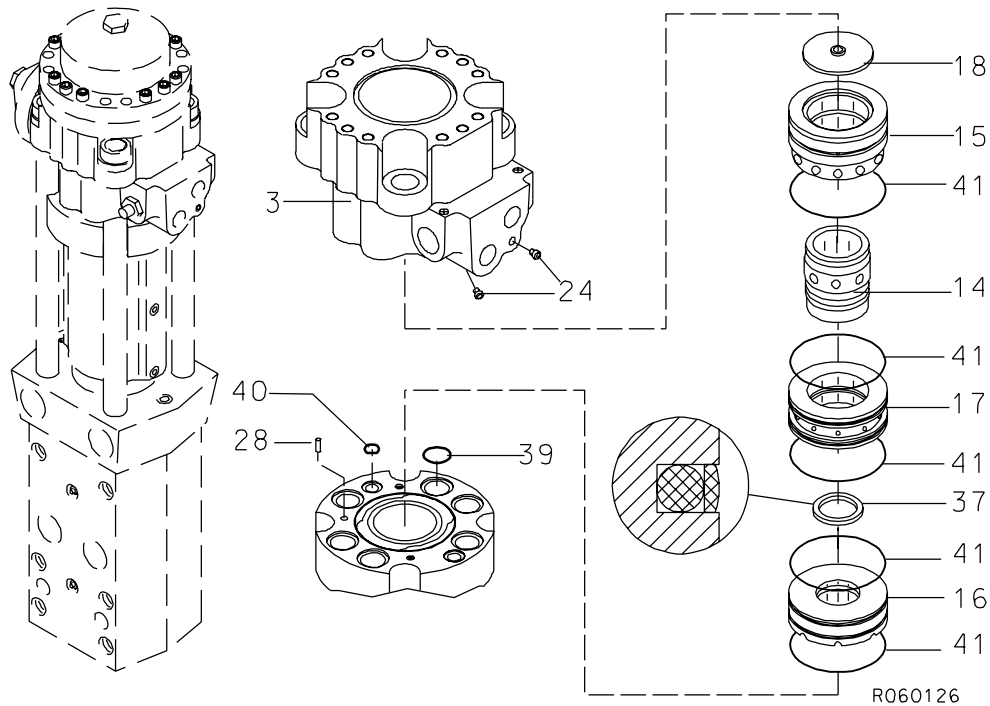
**7. TIE ROD S 27**



R060125

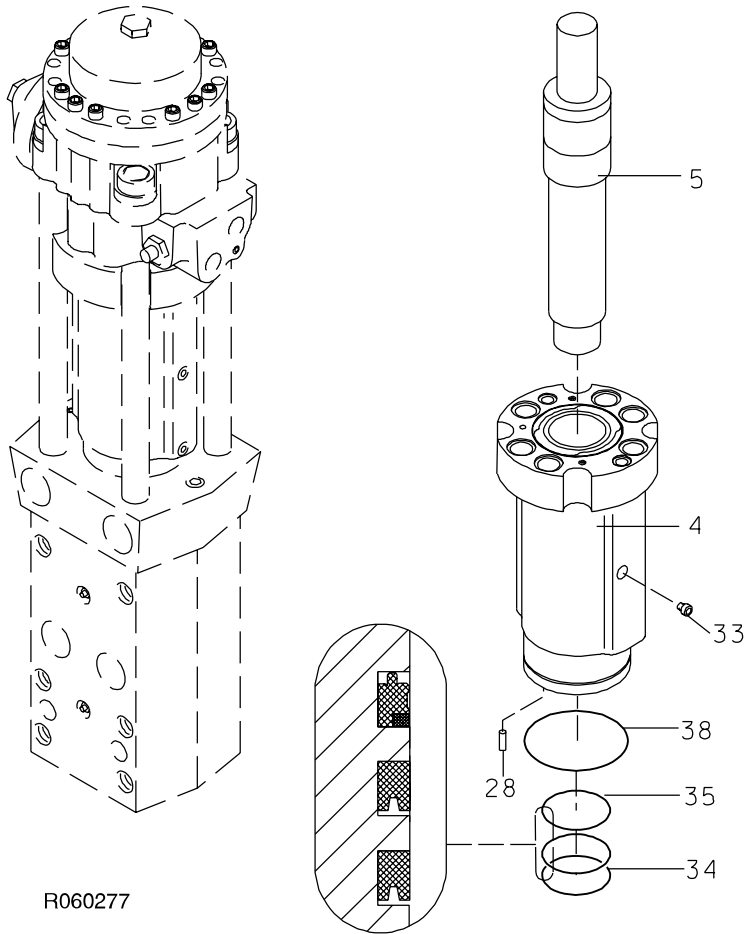
Item	Description	Part no.	Specification	Note	Qty
10	Washer	103123			4
11	Tie rod nut	103058			4
12	Tie rod	103057			4
13	Lock plate	103126			4
23	Rubber ring	400275			4
42	O-ring	94087	D36	*	4
	*) Are included in seal set				

8. VALVE BODY AND DISTRIBUTOR S 27



Item	Description	Part no.	Specification	Note	Qty
3	Valve body (incl. part 24)	102850			1
14	Distributor	103122			1
15	Assembly ring	103121			1
16	Steering ring	103119			1
17	Slide ring	103120			1
18	Puller plate	300523			1
24	Plug	41658			2
28	Parallel pin	90357	8m6x24 DIN 6325		1
37	Seal	901923	D56	*	1
39	O-ring	90017	D34	*	6
40	O-ring	90001	D20	*	2
41	O-ring	90032	D120	*	5
	*) Are included in seal set				

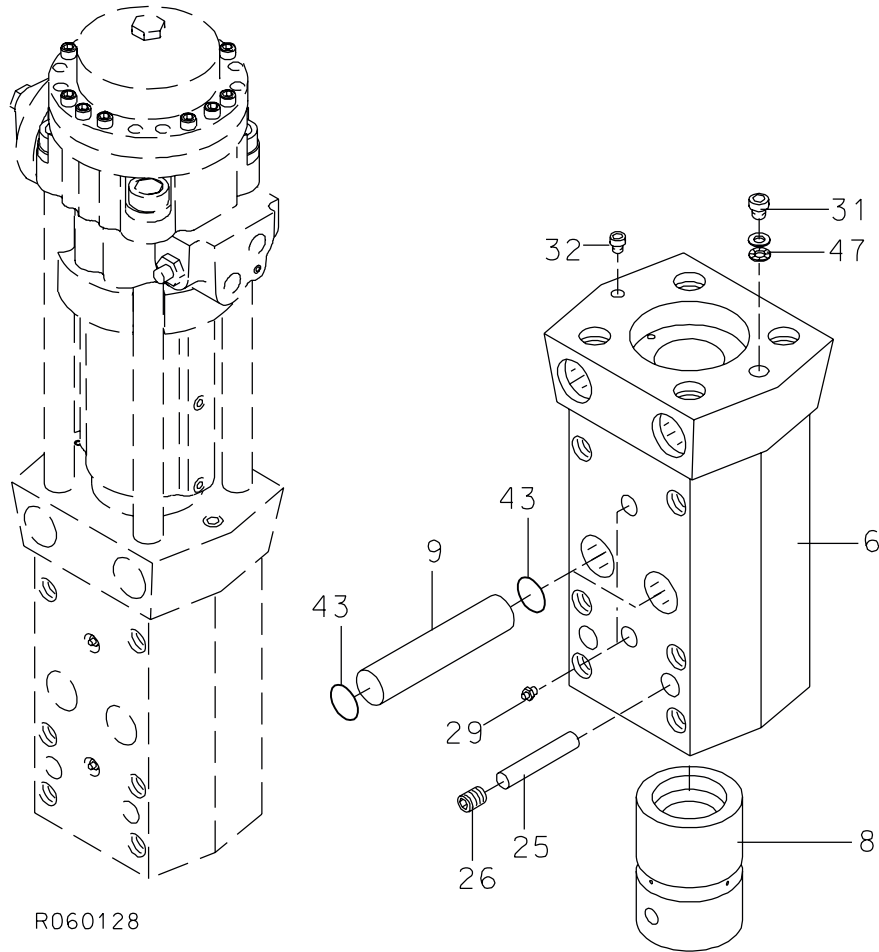
**9. CYLINDER AND PISTON S 27**



R060277

Item	Description	Part no.	Specification	Note	Qty
4	Cylinder (incl. part 33)	102851			1
5	Piston	102917			1
28	Parallel pin	90357	8m6x24 DIN 6325		1
33	Flange plug	93203	R1/8		1
34	Seal	901922	D80	*	2
35	Seal	911022	D80	*	1
38	O-ring	94137	D145	*	1
	*) Are included in seal set				

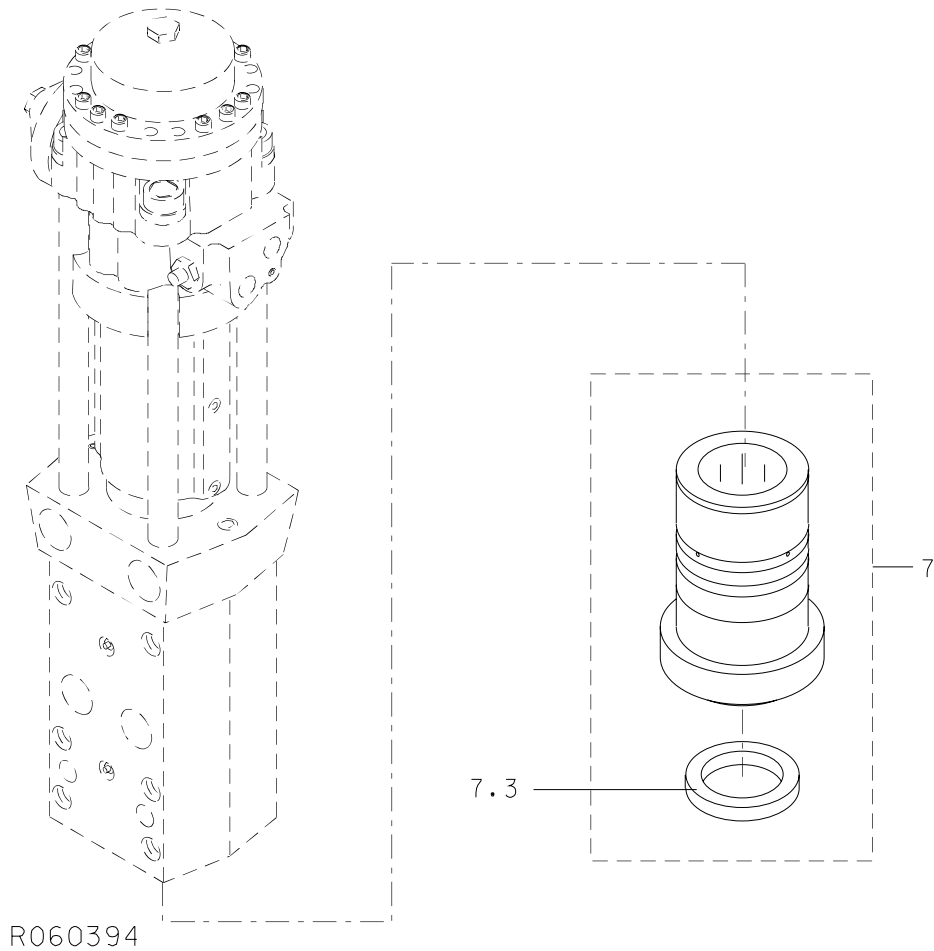
10. FRONT HEAD S 27



R060128

Item	Description	Part no.	Specification	Note	Qty
6	Front head (incl. parts 29, 31, 32 and 47)	102852			1
8	Upper tool bushing	103125			1
9	Tool retaining pin	103130			2
25	Retaining pin	103127			2
26	Retaining screw	902163	M24x25 DIN 913		4
29	Grease nipple	90201	R1/8		2
31	Flange plug	90424	R1/2		1
32	Flange plug	90444	R3/8		1
43	O-ring	90007	D44	*	4
47	Lock washer	91010	M20 NORD-LOCK		1
	* ) Are included in seal set				

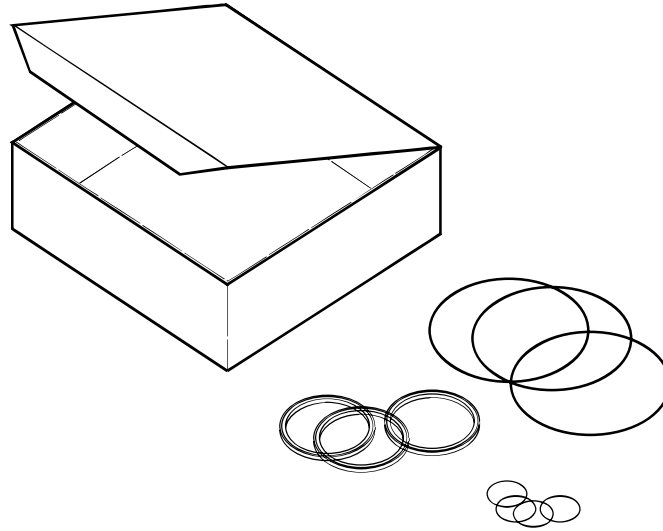
**11. LOWER TOOL BUSHING S 27**



R060394

Item	Description	Part no.	Specification	Note	Qty
7	Lower tool bushing (incl. part 7.3)	103365			1
7.3	Seal	103364	D77	*	1
	*) Are included in seal set				

## 12. SEAL SET S 27



R060012

Item	Description	Part no.	Specification	Note	Qty
Kit	Seal set (incl. parts 1-15)	103570			1
1	Seal	901922	D80		2
2	Seal	911022	D80		1
3	Seal	911010	D22		1
4	Seal	901923	D56		1
5	O-ring	94137	D145		1
6	O-ring	90017	D34		6
7	O-ring	90001	D20		2
8	O-ring	90032	D120		5
9	O-ring	94087	D36		4
10	O-ring	90007	D44		4
11	O-ring	90022	D129		1
12	Usit-ring	90056	D9		2
13	O-ring	910006	D23		2
14	O-ring	90025	D85		1
15	Seal	103364	D77		1







**SANDVIK TAMROCK CORP.**  
Breakers Lahti  
Taivalkatu 8, P.O. Box 165, FIN-15101 Lahti, Finland  
Phone Int. +358 205 44 161, Telefax Int. +358 205 44 160,  
Internet <http://www.rammer.com>

15-40-14000-33-168-0  
18-40-14000-42-216-91