

PARTS MANUAL
PMRB30EN.B98

PULVERIZER
RAMMER RB 30

SERIAL NO.
RB30AC0005-UP

TABLE OF CONTENTS

1. Cylinder RB 30	4
2. Hydraulics RB 30	6
3. Body parts RB 30	7
4. Wear items RB 30	9

GENUINE RAMMER SPARE PARTS

Rammer genuine spare parts are designed and manufactured by using the latest technological knowledge and engineering skills. Rammer spare parts are made of the best available materials with the most advanced manufacturing techniques.

It is important that you use only genuine Rammer spare parts, to ensure easy operation, maintenance and repair of the hammer. Please note that eventual warranty claims will be handled only if you have used genuine Rammer parts in your hammer.

LOCATION OF THE SERIAL NUMBER

It's important to make correct reference to the serial number of the hammer when ordering spare parts. Identification of serial number is the only proper means of maintaining and identifying parts for a specific hammer. The equipment serial number is stamped on the valve body. It is also marked on the CE-marking affixed to hammer's housing.

SPARE PART ORDERS

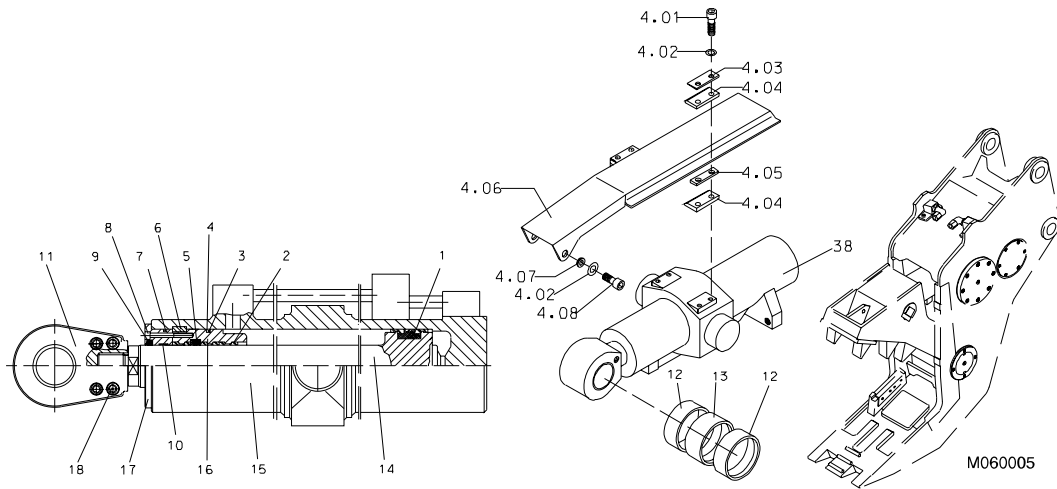
Quick spare part deliveries are secured by exact orders.

Required information:

- Name of customer and contact person
 - Order number (when available)
 - Delivery address
 - Mode of delivery (air mail etc.)
 - Required delivery date
 - Invoicing address
 - Model and serial number of the hammer
 - Name, number and required amount of spare parts
-

PARTS

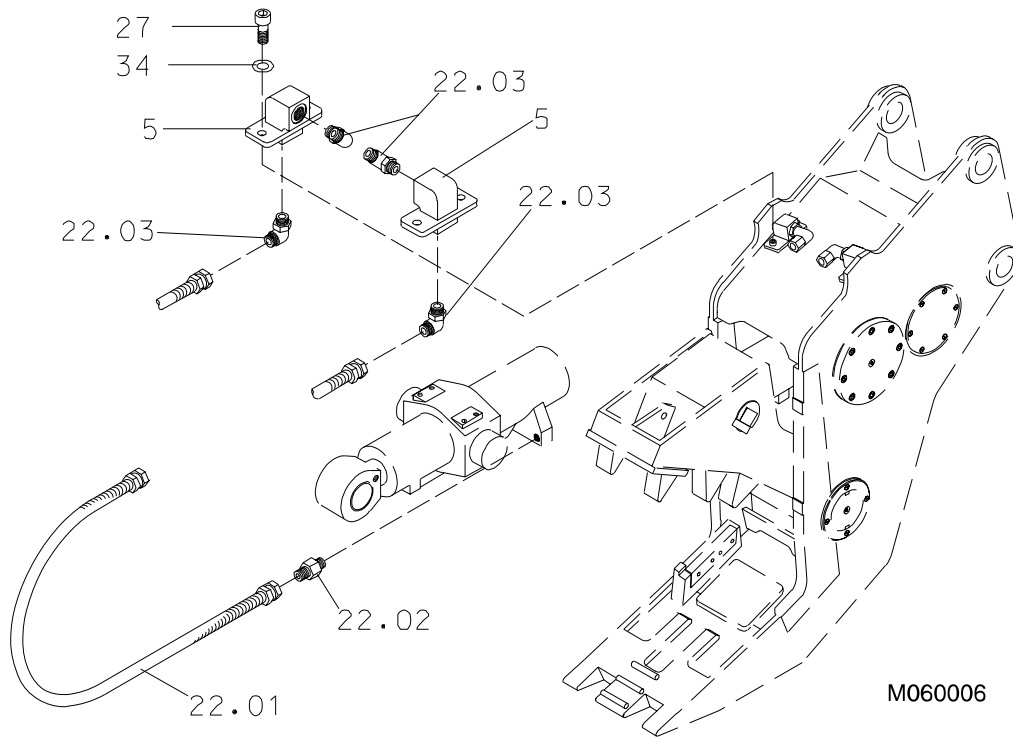
1. CYLINDER RB 30



Item	Description	Part no.	Specification	Note	Qty
4.01	Hex. screw	90544	M16x60-8.8 DIN 931		4
4.02	Lock washer	90597	M16 NORD-LOCK		6
4.03	Support plate	140507			2
4.04	Slide Plate	140509			4
4.05	Spacer plate	140508			2
4.06	Shield plate	140506			1
4.07	Bushing	140511			2
4.08	Hex. screw	90514	M16x30-8.8 DIN 933		2
38	Hydraulic cylinder, incl. parts 1-18	902142	180/110-510		1
1	Seal	902601			1
2	Steering ring	902602	D110		3
3	O-ring	902603	D169		1
4	Supporting ring	902604	D180		1
5	Seal	902605			1
6	Lock ring	902606			1
7	O-ring	902607	D174		1
8	Screw	91107	M12x90-8.8 DIN 912		4
9	Wiper	902609			1
10	Slide ring	902523	D116		1
11	Swivel bushing	902610			1
12	Sliding bearing	902611			2
13	Sliding bearing	902612			1
14	Shaft	902613			1

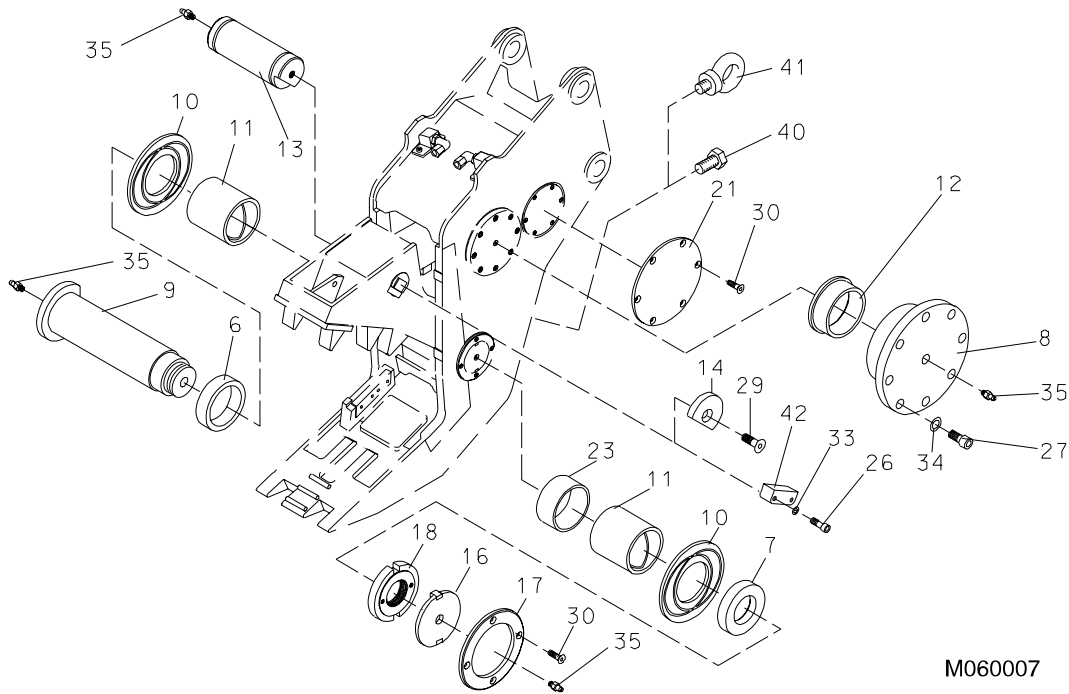
Item	Description	Part no.	Specification	Note	Qty
15	Pipe	902614			1
16	Guide	902615			1
17	Cover	902616			1
18	Screw	900004	M16x90-8.8 DIN 912		2
19	Seal set for cylinder	902282			1

2. HYDRAULICS RB 30



Item	Description	Part no.	Specification	Note	Qty
5	Elbow	140278			2
22.01	Hose assembly	901584			2
22.02	Adapter	901583	F40XS25-1		2
22.03	Elbow	901585	C40XS25-1		4
27	Hex. socket screw	91100	M16x40-8.8 DIN 912		4
34	Lock washer	90597	M16 NORD-LOCK		4

3. BODY PARTS RB 30



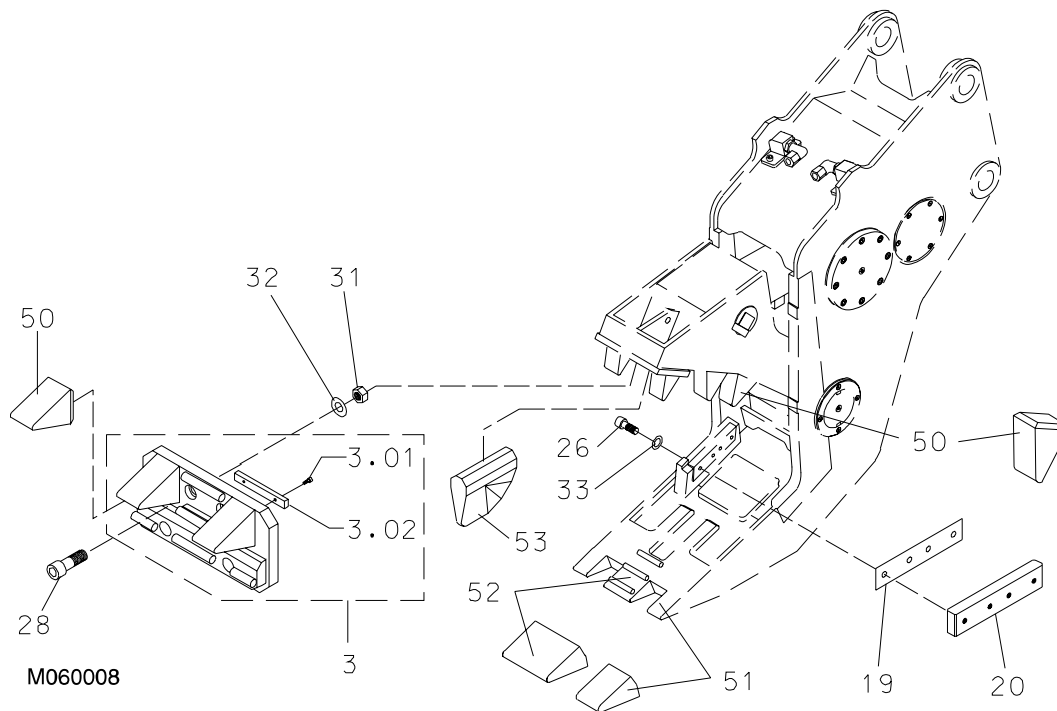
M060007

Item	Description	Part no.	Specification	Note	Qty
6	Bush	140116			1
7	Bush	140115			1
8	Cap	140035			2
9	Shaft	140119			1
10	Spacer plate	140118			2
11	Bush	140121			2
12	Bush	140038			2
13	Shaft	140039			1
14	Cover	140040			1
16	Cover	140042			1
17	Cover holder	140044			1
18	Axle nut	140117			1
21	Cover	140027			2
23	Bushing	140345			1
26	Hex. socket screw	90564	M12x40-8.8 DIN 912		2
27	Hex. socket screw	91100	M16x40-8.8 DIN 912		16
29	Hex. socket screw	901287	M20x40-8.8 DIN 7991		1

BODY PARTS RB 30

Item	Description	Part no.	Specification	Note	Qty
30	Hex. socket screw	901286	M10x25-8.8 DIN 7991		16
33	Lock washer	91012	M12 NORD-LOCK		2
34	Lock washer	90597	M16 NORD-LOCK		16
35	Grease nipple	90204	A M10x1		5
40	Hex. screw	900026	M30x40-8.8 DIN 933		1
41	Lifting eye	90705	M30 DIN 580		1
42	Plate	140524			1
54	Label set	141050			1

4. WEAR ITEMS RB 30



Item	Description	Part no.	Specification	Note	Qty
3	Crushing plate, incl. parts 3.01-3.02	140016			1
3.01	Hex. socket screw	90561			2
3.02	Key	140026			1
19	Shim plate	140028			2
20	Cutting blade	140029			2
26	Hex. socket screw	90564	M12x40-8.8 DIN 912		8
28	Hex. socket screw	901289	M22x70-8.8 DIN 912		4
31	Lock nut	901285	M22 DIN 928		4
32	Washer	901291	M24 DIN126		4
33	Lock washer	91012	M12 NORD-LOCK		8
50	Crushing tooth	140017			5
51	Side tooth	140020			2
52	Front tooth	140019			1
53	Breaking tooth	140025			1

SANDVIK TAMROCK CORP.
Breakers Lahti
Taivalkatu 8, P.O. Box 165, FIN-15101 Lahti, Finland
Phone Int. +358 205 44 161, Telefax Int. +358 205 44 160,
Internet <http://www.rammer.com>