

**PARTS MANUAL**  
**PMRB42EN.B98**

**PULVERIZER**  
**RAMMER RB 42**

**SERIAL NO.**  
**RB42AB0005-UP**

---

## TABLE OF CONTENTS

1. Cylinder RB 42 .....	4
2. Hydraulics RB 42 .....	5
3. Body parts RB 42 .....	6
4. Wear items RB 42 .....	8

---

## GENUINE RAMMER SPARE PARTS

Rammer genuine spare parts are designed and manufactured by using the latest technological knowledge and engineering skills. Rammer spare parts are made of the best available materials with the most advanced manufacturing techniques.

It is important that you use only genuine Rammer spare parts, to ensure easy operation, maintenance and repair of the hammer. Please note that eventual warranty claims will be handled only if you have used genuine Rammer parts in your hammer.

## LOCATION OF THE SERIAL NUMBER

It's important to make correct reference to the serial number of the hammer when ordering spare parts. Identification of serial number is the only proper means of maintaining and identifying parts for a specific hammer. The equipment serial number is stamped on the valve body. It is also marked on the CE-marking affixed to hammer's housing.

## SPARE PART ORDERS

Quick spare part deliveries are secured by exact orders.

Required information:

- Name of customer and contact person
  - Order number (when available)
  - Delivery address
  - Mode of delivery (air mail etc.)
  - Required delivery date
  - Invoicing address
  - Model and serial number of the hammer
  - Name, number and required amount of spare parts
-

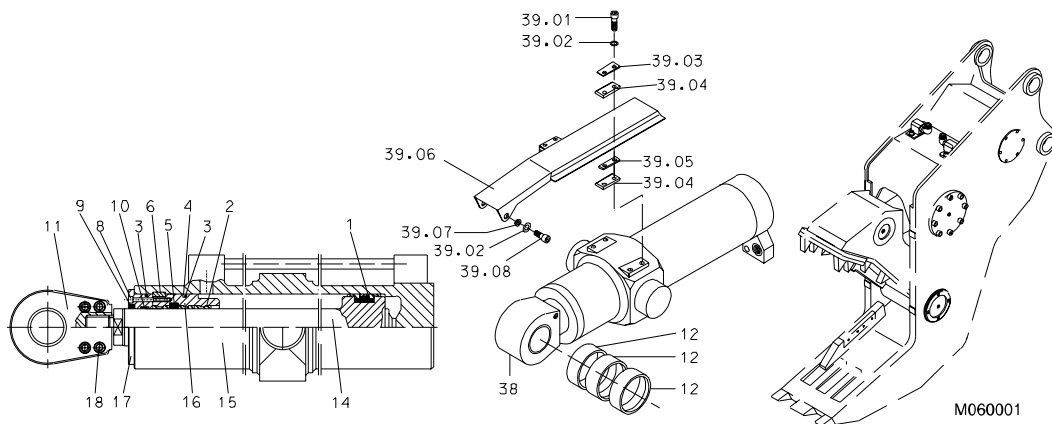
---

---

# **PARTS**

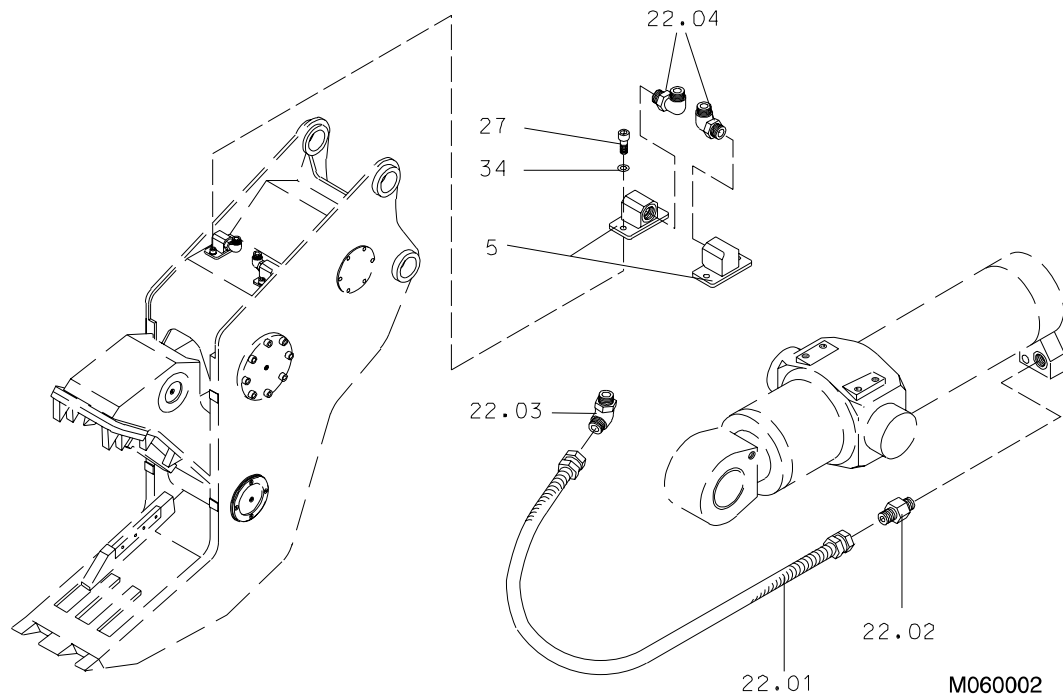
---

# 1. CYLINDER RB 42



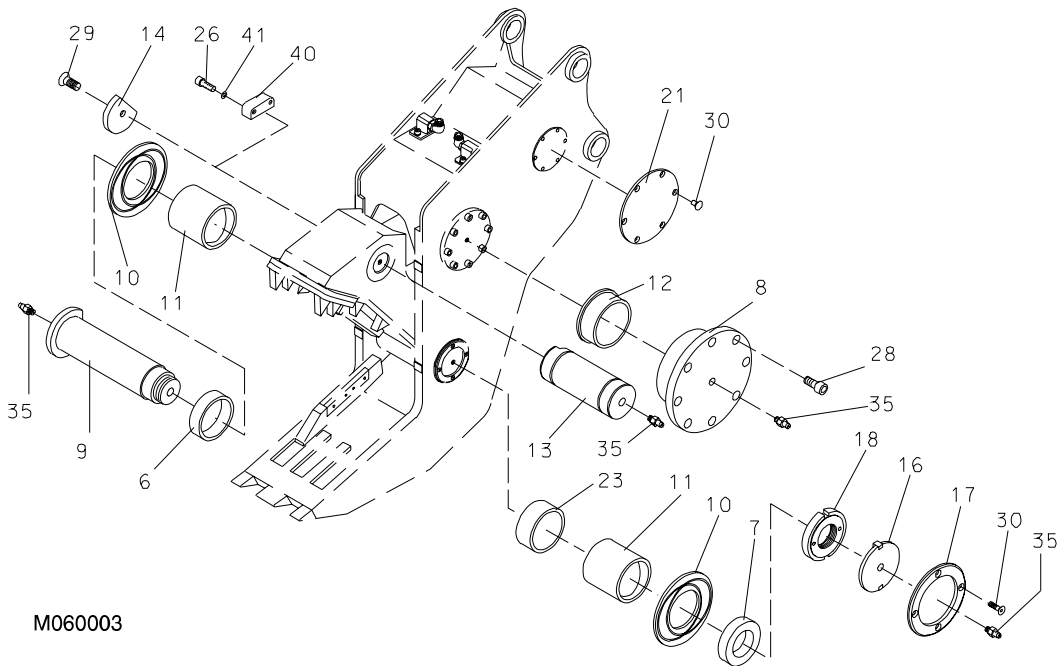
Item	Description	Part no.	Specification	Note	Qty
38	Hydraulic cylinder, incl. parts 1-18	901905			1
1	Seal	902649			1
2	Steering ring	902650	D160		3
3	O-ring	902651	D209		2
4	Supporting ring	902652	D180		1
5	Seal	902653			1
6	Lock ring	902654			1
8	Hex. socket screw	902656	M10x60-8.8 DIN 912		4
9	Wiper	902657			1
10	Slide ring	902648	D166		1
11	Link ear plate	902658			1
12	Bearing bushing	902302	120/12.5x50		3
14	Shaft	902661			1
15	Pipe	902662			1
16	Guide	902663			1
17	Cover	902664			1
18	Hex. socket screw	900022	M20x120-8.8 DIN 912		4
19	Seal set for cylinder	902003			1
39.01	Hex. screw	90544	M16x60-8.8 DIN 931		4
39.02	Lock washer	90597	M16 NORD-LOCK		6
39.03	Support plate	140507			2
39.04	Slide Plate	140509			4
39.05	Spacer plate	140508			2
39.06	Shield plate	140517			1
39.07	Bushing	140511			2
39.08	Hex. screw	90514	M16x30-8.8 DIN 933		2

2. HYDRAULICS RB 42



Item	Description	Part no.	Specification	Note	Qty
5	Elbow	140484			2
22.01	Hose assembly	901885			2
22.02	Adapter	901884	F40XS32 - 1 1/4		2
22.03	Elbow	901883	V40XS32 - 1 1/4		2
22.04	Elbow	901882	C40XS32 - 1 1/4		2
27	Hex. socket screw	91100	M16x40-8.8 DIN 912		4
34	Lock washer	90597	M16 NORD-LOCK		4

**3. BODY PARTS RB 42**

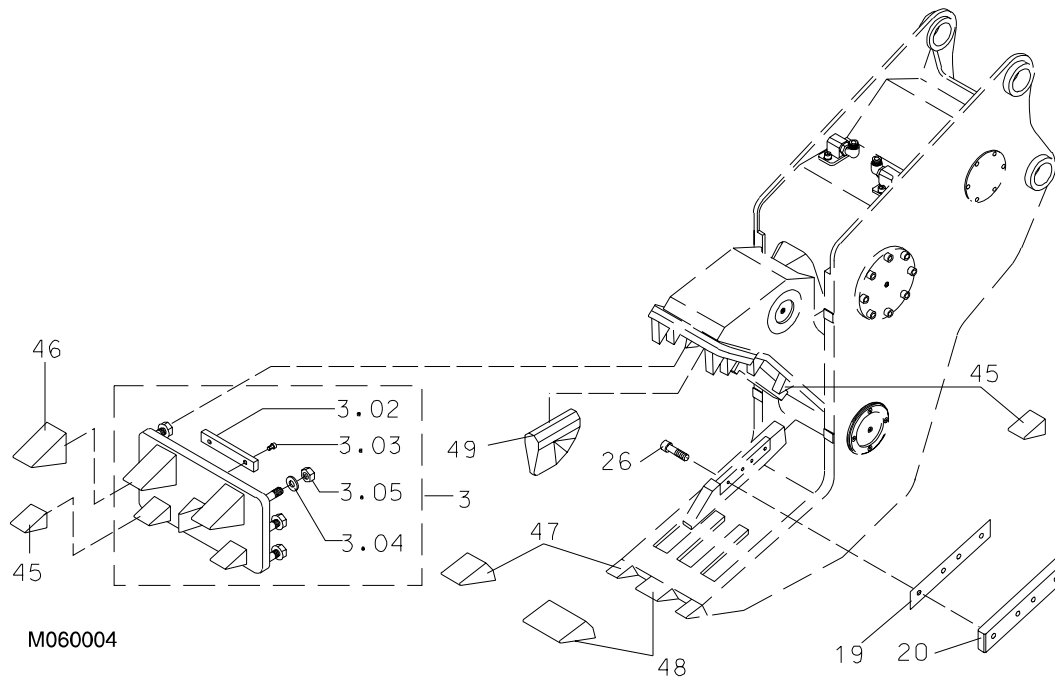


M060003

Item	Description	Part no.	Specification	Note	Qty
6	Bush	140116			1
7	Bush	140115			1
8	Cap	140467			2
9	Shaft	140522			1
10	Spacer plate	140118			2
11	Bush	140121			2
12	Bearing bushing	140468			2
13	Shaft	140464			1
14	Stopper	140265			1
16	Cover	140042			1
17	Cover holder	140044			1
18	Axle nut	140117			1
21	Cover	140027			2
23	Bushing	140523			1
26	Hex. socket screw	901902	M12x45-8.8 DIN 912		2
28	Hex. socket screw	901903	M20x45-8.8 DIN 912		16
29	Hex. socket screw	901287	M20x40-8.8 DIN 7991		1
30	Hex. socket screw	901286	M10x25-8.8 DIN 7991		16

<b>Item</b>	<b>Description</b>	<b>Part no.</b>	<b>Specification</b>	<b>Note</b>	<b>Qty</b>
35	Grease nipple	90204	A M10x1		5
40	Plate	140525			1
41	Lock washer	91012	M12 NORD-LOCK		2
50	Label set	141059			1

**4. WEAR ITEMS RB 42**



Item	Description	Part no.	Specification	Note	Qty
3	Crushing plate, incl. parts 3.02-3.05	140419			1
3.02	Key	140416			1
3.03	Hex. socket screw	901627	M10x16-8.8 DIN912		2
3.04	Washer	91016	DIN 126-22		6
3.05	Lock nut	90579	M20-8 DIN 982		6
19	Shim plate	140028			x
20	Cutting blade	140029			2
26	Hex. socket screw	901902	M12x45-8.8 DIN 912		8
45	Crushing tooth	140377			7
46	Crushing tooth	140017			2
47	Side tooth	140020			2
48	Front tooth	140019			1
49	Breaking tooth	140025			1





**SANDVIK TAMROCK CORP.**  
Breakers Lahti  
Taivalkatu 8, P.O. Box 165, FIN-15101 Lahti, Finland  
Phone Int. +358 205 44 161, Telefax Int. +358 205 44 160,  
Internet <http://www.rammer.com>