

ENG 1/01

**PARTS MANUAL**

**PMRC4ENG.101**

**CUTTER-CRUSHER**

**RAMMER RC 4**

**SERIAL NO.**

**RC4BA0036-UP**

---

## TABLE OF CONTENTS

1. Cylinder RC 4. . . . .	4
2. Hydraulics RC 4. . . . .	5
3. Slewing ring RC 4. . . . .	6
4. Body parts RC 4. . . . .	7
5. Wear items RC 4. . . . .	8

---

### GENUINE RAMMER SPARE PARTS

Rammer genuine spare parts are designed and manufactured by using the latest technological knowledge and engineering skills. Rammer spare parts are made of the best available materials with the most advanced manufacturing techniques.

It is important that you use only genuine Rammer spare parts, to ensure easy operation, maintenance and repair of the product. Please note that eventual warranty claims will be handled only if you have used genuine Rammer parts in your Rammer.

### LOCATION OF THE SERIAL NUMBER

It's important to make correct reference to the serial number of the product when ordering spare parts. Identification of serial number is the only proper means of maintaining and identifying parts for a specific product. The location of equipment serial number is pointed in "Operation and maintenance" manual.

### SPARE PART ORDERS

Quick spare part deliveries are secured by exact orders.

#### Required information:

- Name of customer and contact person
  - Order number (when available)
  - Delivery address
  - Mode of delivery (air mail etc.)
  - Required delivery date
  - Invoicing address
  - Model and serial number of the product
  - Name, number and required amount of spare parts
-

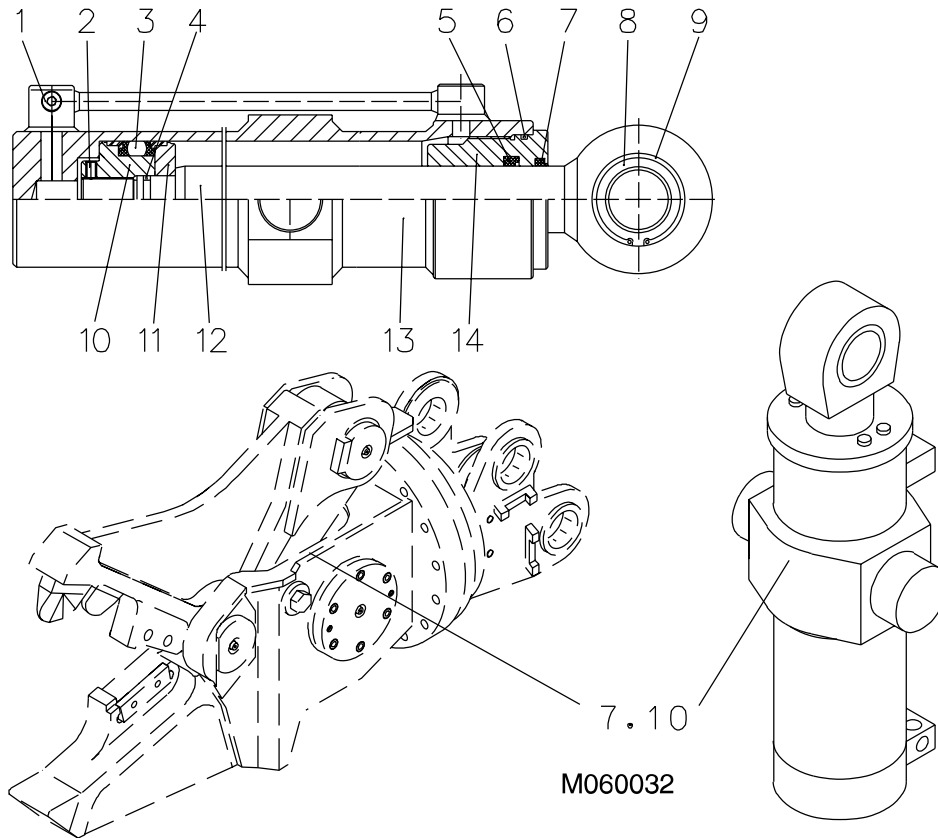
---

---

# **PARTS**

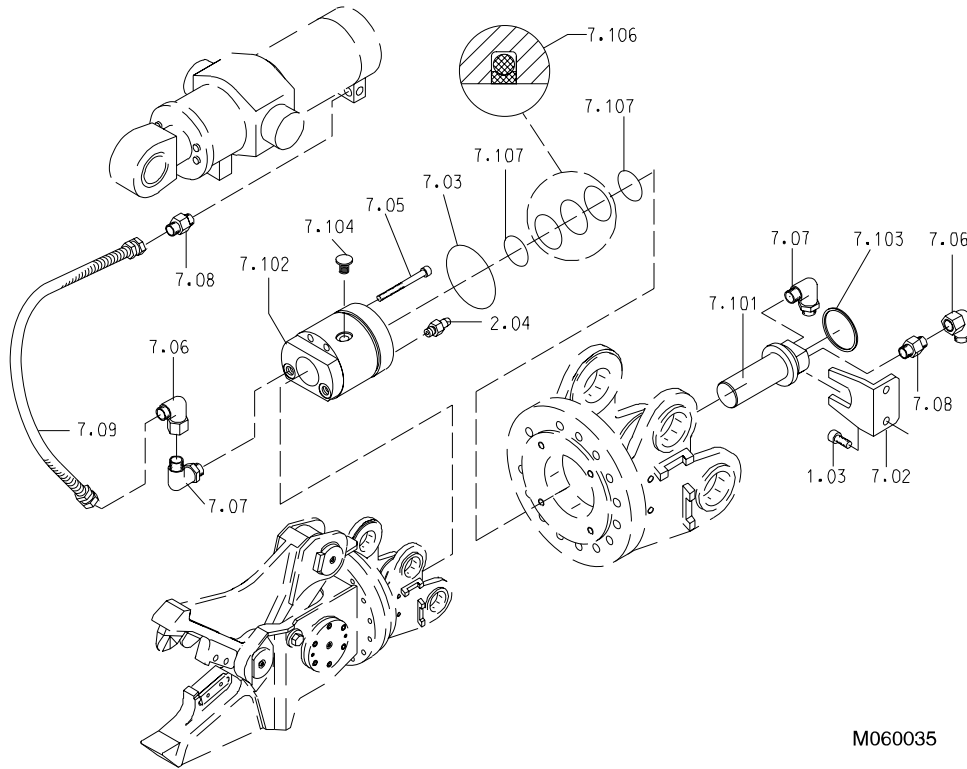
---

**1. CYLINDER RC 4**



Item	Description	Part no.	Specification	Note	Qty
7.10	Hydraulic cylinder (incl. parts 1-14)	902491			1
1	Flange plug	90444	R3/8		1
2	Retaining screw	902731	M8x16-45H DIN914		1
3	Seal	902733	D75		1
4	O-ring	94087	D36		1
5	Seal	902732	D56		1
6	O-ring	902734	D94		1
7	Wiper	902735	D56		1
8	Bearing	902736	D60		1
9	Lock ring	934069	90x3 DIN 472		1
10	Piston	902737	D100		1
11	Flange	902738	D100		1
12	Shaft	902739	D56		1
13	Pipe	902740	D100		1
14	Guide	902741	D56		1
15	Seal set for cylinder	902742			1

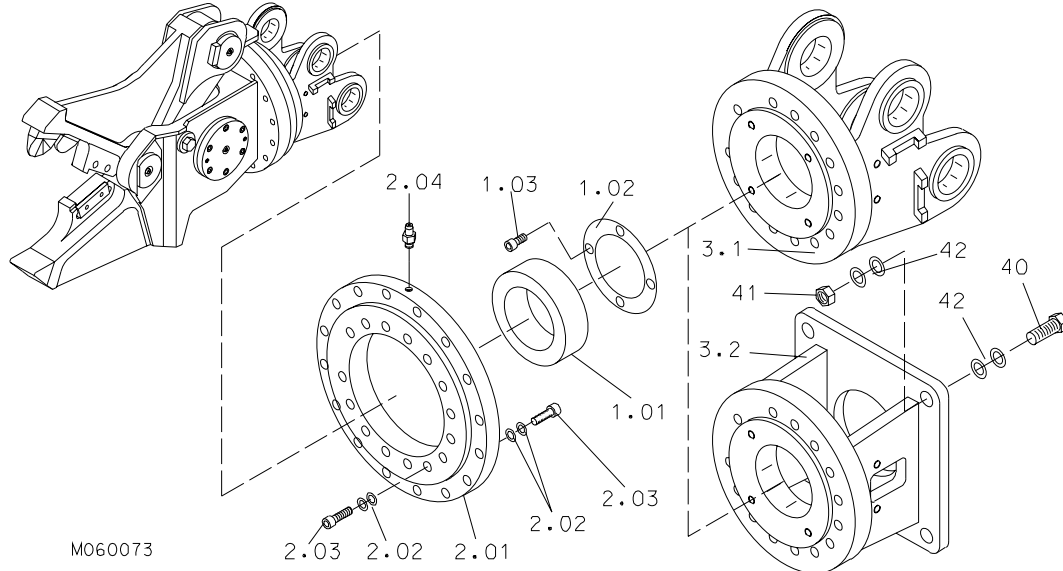
2. HYDRAULICS RC 4



M060035

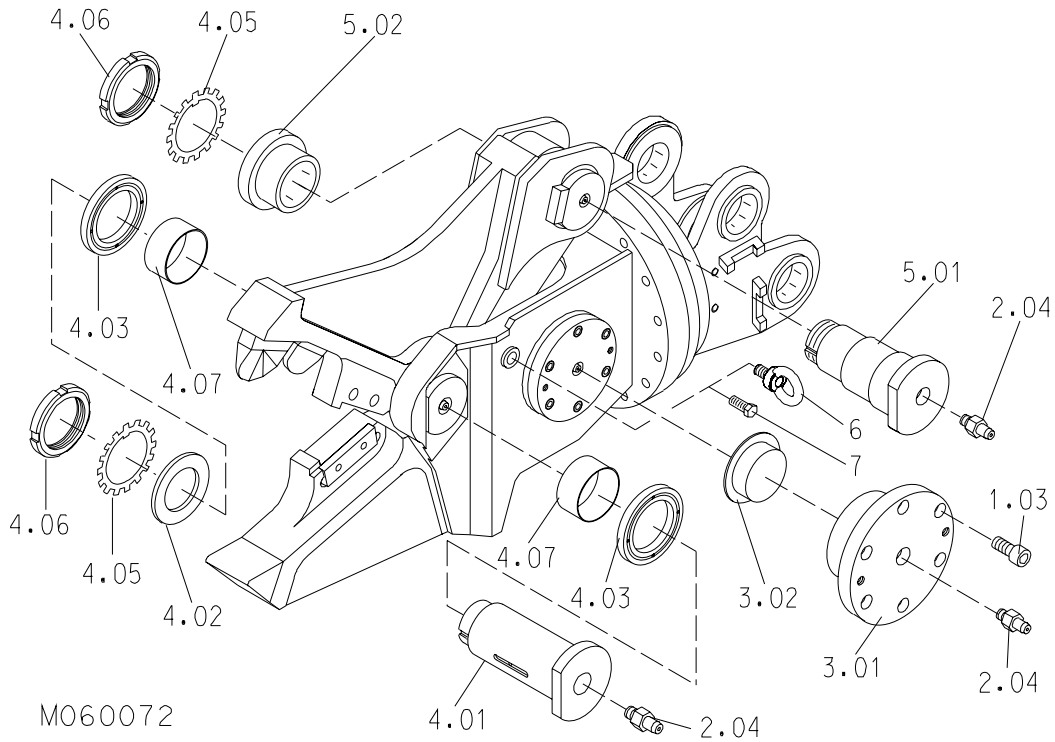
Item	Description	Part no.	Specification	Note	Qty
1.03	Hex. socket screw	91014	M12x25-8.8 DIN 912		2
2.04	Grease nipple	90204	A M10x1		1
7	Bulkhead union (incl. parts 7.101-7.107)	140528			1
7.02	Slew stopper	140570			1
7.03	O-ring	90028	D109		1
7.05	Hex. socket screw	902486	M10x100-8.8 DIN 912		4
7.06	Elbow	902666	C6XS12		3
7.07	Elbow	902488	C40XS12-3/8		3
7.08	Connector	902489	F40XS12-3/8		3
7.09	Hose assembly	902490	RC4 L=500		2
7.101	Spool	140529			1
7.102	Body	140530			1
7.103	Lock ring	902463	72x2.5 DIN 472		1
7.104	Flange plug	90444	R3/8		2
7.106	Seal set	902462			3
7.107	Wiper	94154	D45		2
kit	Seal set for bulkhead union	141270			1

**3. SLEWING RING RC 4**



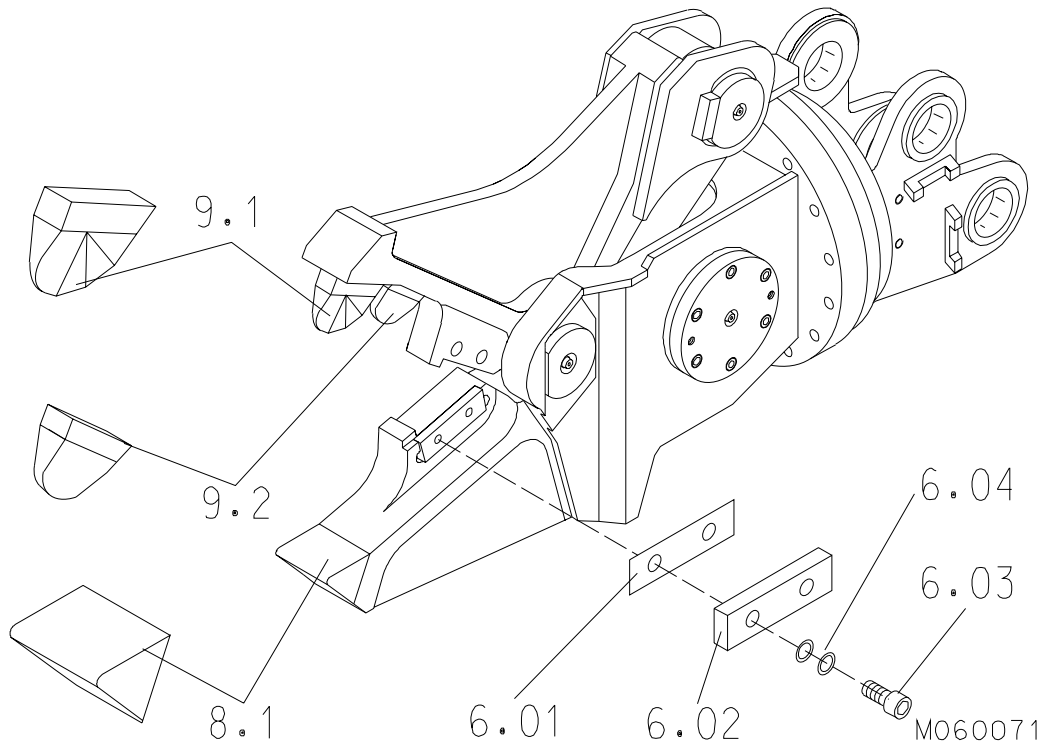
Item	Description	Part no.	Specification	Note	Qty
1.01	Brake	140575			1
1.02	Shim plate	140598			2
1.03	Hex. socket screw	91014	M12x25-8.8 DIN 912		4
2.01	Slewing ring	902464			1
2.02	Lock washer	91012	M12 NORD-LOCK		31
2.03	Hex. socket screw	902465	M12x80-10.9 DIN 912		31
2.04	Grease nipple	90204	A M10x1		2
2.05	Seal set for slewing ring	902647			1
3.1	Fixture for pin mounted	140557			1
3.2	Fixture for flange mounted	111296			1
40	Hex. screw	91027	M20x70-8.8 DIN 931		4
41	Hex. nut	91017	M20-8 DIN 934		4
42	Lock washer	91010	M20 NORD-LOCK		8

**4. BODY PARTS RC 4**



Item	Description	Part no.	Specification	Note	Qty
1.03	Hex. socket screw	91014	M12x25-8.8 DIN 912		12
2.04	Grease nipple	90204	A M10x1		4
3.01	Cap	140569			2
3.02	Sliding bearing	902482			2
4.01	Shaft	140564			1
4.02	Flange	140565			1
4.03	Spacer plate	140566			2
4.05	Lock washer	902484	MB10 SKF		2
4.06	Axle nut	902485	KM10 M50x1.5 SKF		2
4.07	Sliding bearing	902483			2
5.01	Shaft	140567			1
5.02	Bushing	140568			1
6	Lifting eye	90690	M16 DIN 580		1
7	Hex. screw	90514	M16x30-8.8 DIN 933		2
10	Label set	141054			1

**5. WEAR ITEMS RC 4**



Item	Description	Part no.	Specification	Note	Qty
6.01	Shim plate	140573			2
6.02	Cutting blade	140574			2
6.03	Hex. socket screw	90501	M10x20-8.8 DIN 912		4
6.04	Lock washer	91037	M10 NORD-LOCK		4
8.1	Front tooth	140536			1
9.1	Breaking tooth	140168			1
9.2	Breaking tooth	140552			1





**SANDVIK TAMROCK CORP.**  
Breakers Lahti  
Taivalkatu 8, P.O. Box 165, FIN-15101 Lahti, Finland  
Phone Int. +358 205 44 161, Telefax Int. +358 205 44 160,  
Internet <http://www.rammer.com>

45-4-14007-36-36-98  
45-4-14007-39-180-273