

ENG A/01

PARTS MANUAL
PMRC6ENG.A01

CUTTER-CRUSHER

RAMMER RC 6

Serial No.

RC6BB0075-UP

RC6RB0075-UP

TABLE OF CONTENTS

1. Cylinder RC 6	4
2. Hydraulics RC 6	6
3. Brake RC 6	8
4. Hydraulic motor RC 6	9
5. Slewing ring RC 6	10
6. Body parts RC 6	11
7. Wear items RC 6	12

GENUINE RAMMER SPARE PARTS

Rammer genuine spare parts are designed and manufactured by using the latest technological knowledge and engineering skills. Rammer spare parts are made of the best available materials with the most advanced manufacturing techniques.

It is important that you use only genuine Rammer spare parts, to ensure easy operation, maintenance and repair of the product. Please note that eventual warranty claims will be handled only if you have used genuine Rammer parts in your Rammer.

LOCATION OF THE SERIAL NUMBER

It's important to make correct reference to the serial number of the product when ordering spare parts. Identification of serial number is the only proper means of maintaining and identifying parts for a specific product. The location of equipment serial number is pointed in "Operation and maintenance" manual.

SPARE PART ORDERS

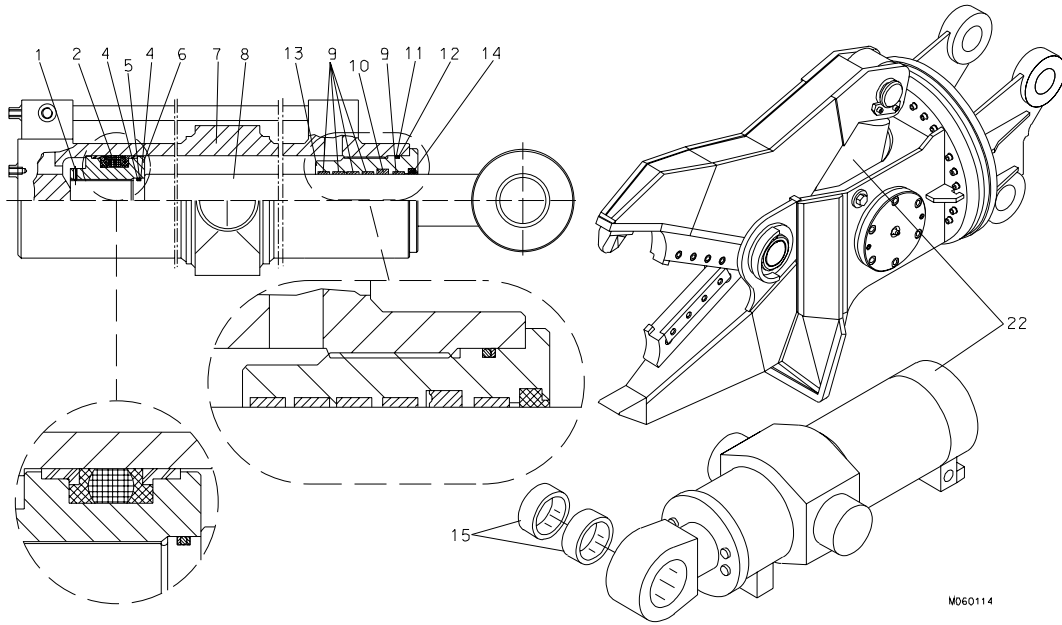
Quick spare part deliveries are secured by exact orders.

Required information:

- Name of customer and contact person
 - Order number (when available)
 - Delivery address
 - Mode of delivery (air mail etc.)
 - Required delivery date
 - Invoicing address
 - Model and serial number of the product
 - Name, number and required amount of spare parts
-

PARTS

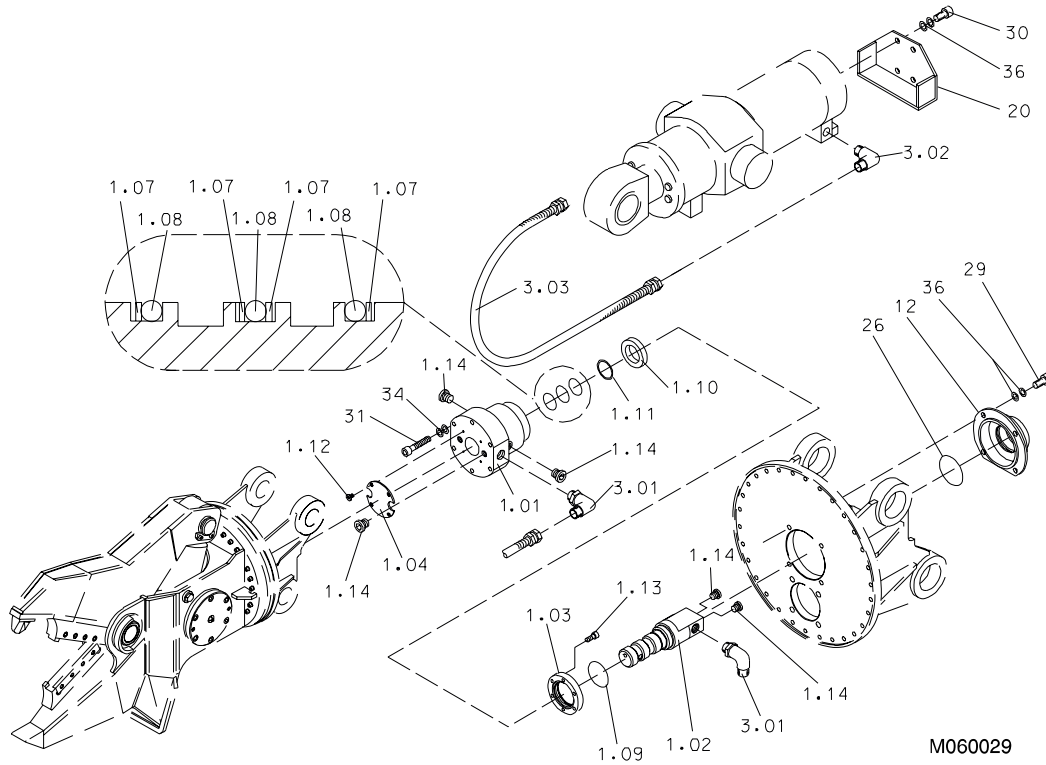
1. CYLINDER RC 6



M060114

Item	Description	Part no.	Specification	Note	Qty
22	Hydraulic cylinder (incl. parts 1-15)	950286			1
1	Lock screw	902622			1
2	Piston seal	950288			1
4	Supporting ring	902625			2
5	O-ring	902626			1
6	Piston	950290			1
7	Cylinder tube	902628			1
8	Piston rod	902629			1
9	Steering ring	950289	75/80x9.7		5
10	Seal	902631			1
11	O-ring	902632			1
12	Supporting ring	902633			1
13	Guide	950291			1
14	Wiper	902635			1
15	Bearing bushing	902636			2
16	Seal set for cylinder	950287			1

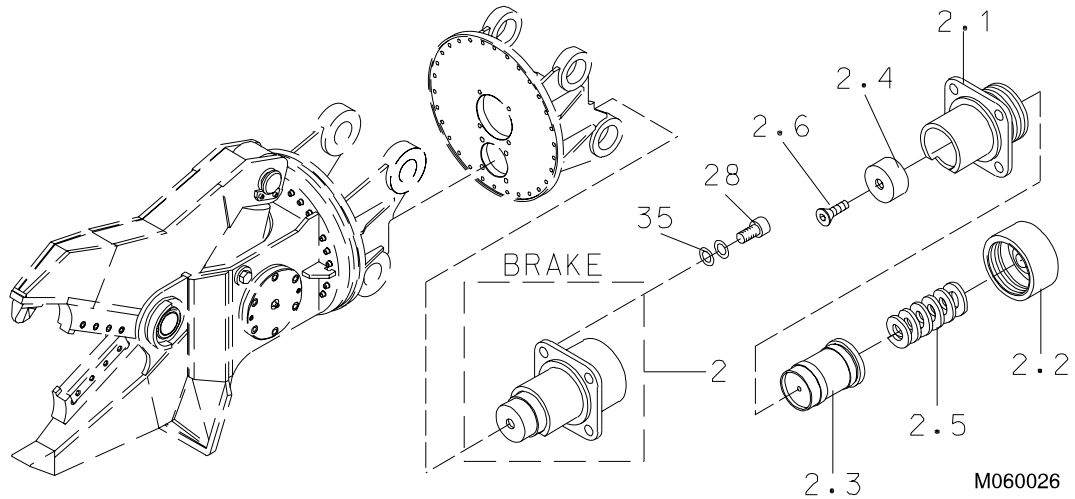
2. HYDRAULICS RC 6



Item	Description	Part no.	Specification	Note	Qty
1	Bulkhead union (incl. parts 1.01-1.14)	140135			1
1.01	Body	140107			1
1.02	Spool	140089			1
1.03	Cover	140124			1
1.04	Cover	140123			1
1.07	Supporting ring	901633	D40		4
1.08	O-ring	901634	D40		3
1.09	Wiper	901635	D50		1
1.10	Ball bearing	901636			1
1.11	Retaining ring	901632	40x1,75 DIN 471		1
1.12	Hex. socket screw	901306			4
1.13	Hex. socket screw	90651	M6x16-12.9 DIN 912		6
1.14	Flange plug	90403	R1/4		6
1.15	Seal set for bulkhead union	141266			1
3.01	Elbow	901665	C40XS16-1/2		4
3.02	Elbow	901666	C3XS16-1/2		2
3.03	Hose assembly	901664			2
12	Slew stopper	140434			1

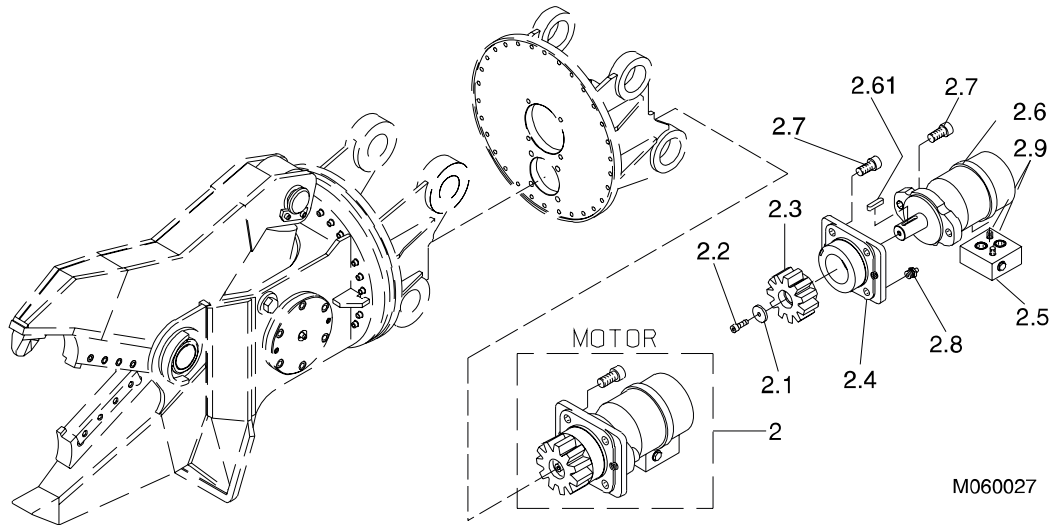
Item	Description	Part no.	Specification	Note	Qty
20	Casing	140284			1
26	O-ring	901626	D59		1
29	Hex. socket screw	90555	M10x25-8.8 DIN 912		4
30	Hex. socket screw	901627	M10x16-8.8 DIN912		4
31	Hex. socket screw	901629	M8x60-8.8 DIN 912		6
34	Lock washer	91011	M8 NORD-LOCK		6
36	Lock washer	91037	M10 NORD-LOCK		8

3. BRAKE RC 6



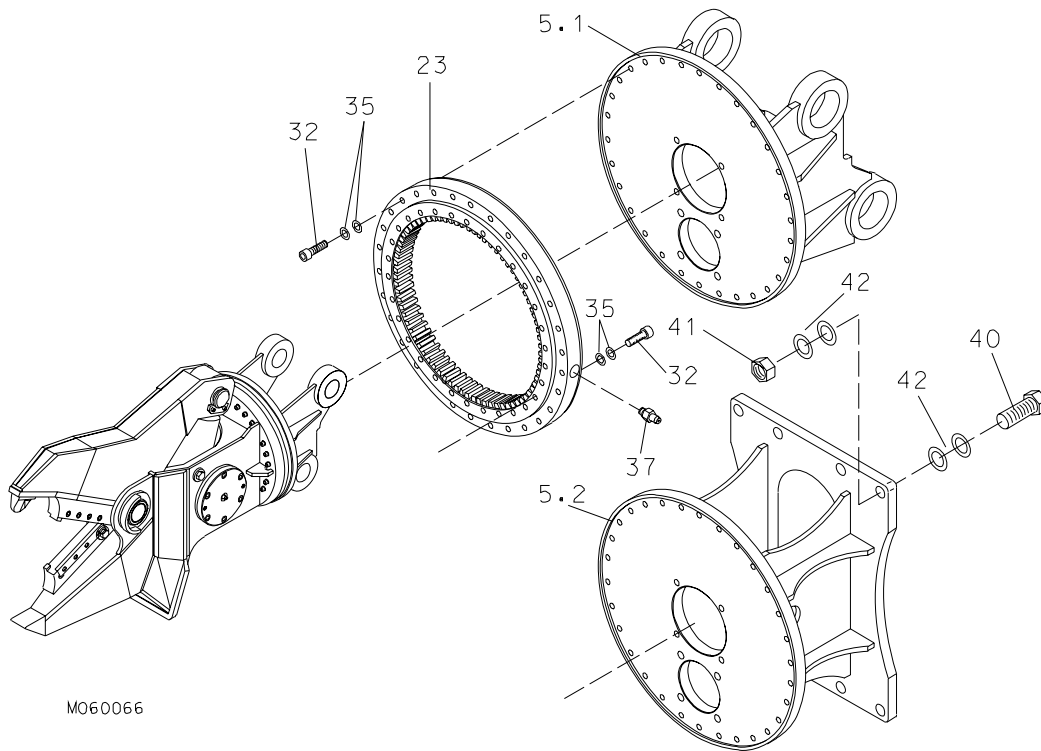
Item	Description	Part no.	Specification	Note	Qty
2	Brake (incl. parts 2.1-2.6)	140437			1
2.1	Body	140286			1
2.2	Cover	140287			1
2.3	Spring guide	140288			1
2.4	Wear plate	140436			1
2.5	Spring	901662			1
2.6	Hex. socket screw	901782	M6x30-8.8 DIN 7991		1
28	Hex. socket screw	91014	M12x25-8.8 DIN 912		4
35	Lock washer	91012	M12 NORD-LOCK		4

4. HYDRAULIC MOTOR RC 6



Item	Description	Part no.	Specification	Note	Qty
2	Hydraulic motor (incl. parts 2.1-2.9)	140500			1
2.1	Flange	140589			1
2.2	Hex. socket screw	901177	M8x20-8.8 DIN 7984		1
2.3	Cylindrical gear	140492			1
2.4	Flange	140588			1
2.5	Valve	902442			1
2.6	Hydraulic motor (incl. part 2.61)	140600			1
2.61	Key	902423			1
2.7	Hex. socket screw	91014	M12x25-8.8 DIN 912		5
2.8	Grease nipple	903141	A M10x1, 90 degrees		1
2.9	Hex. socket screw	901630	M8x35-12.9 DIN 912		2

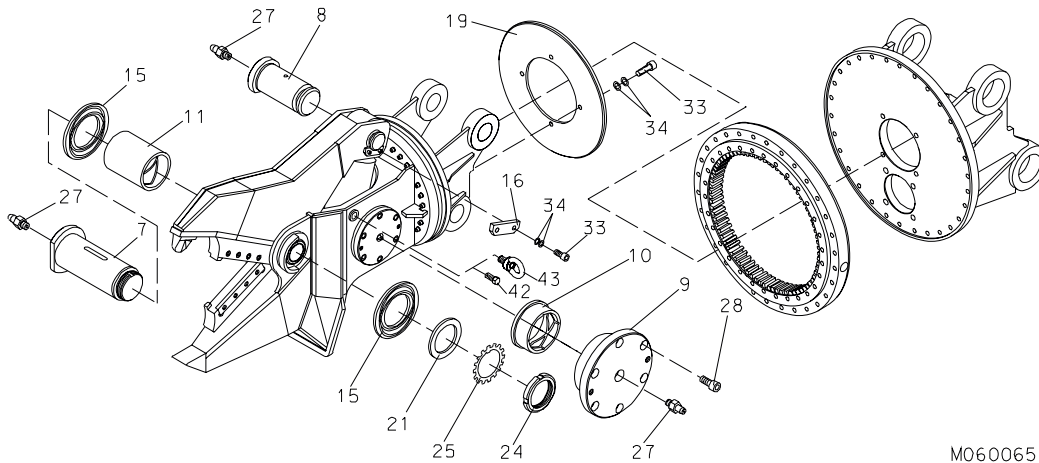
5. SLEWING RING RC 6



M060066

Item	Description	Part no.	Specification	Note	Qty
5.1	Fixture for pin mounted	140433			1
5.2	Fixture for flange mounted	110282			1
23	Slewing ring	901862			1
23.1	Seal set for slewing ring	902645			1
32	Hex. socket screw	91118	M12x70-12.9 DIN 912		56
35	Lock washer	91012	M12 NORD-LOCK		56
37	Grease nipple	90204	A M10x1		1
40	Hex. screw	91022	M20x90-8.8 DIN 931		8
41	Hex. nut	91017	M20-8 DIN 934		8
42	Lock washer	91010	M20 NORD-LOCK		16

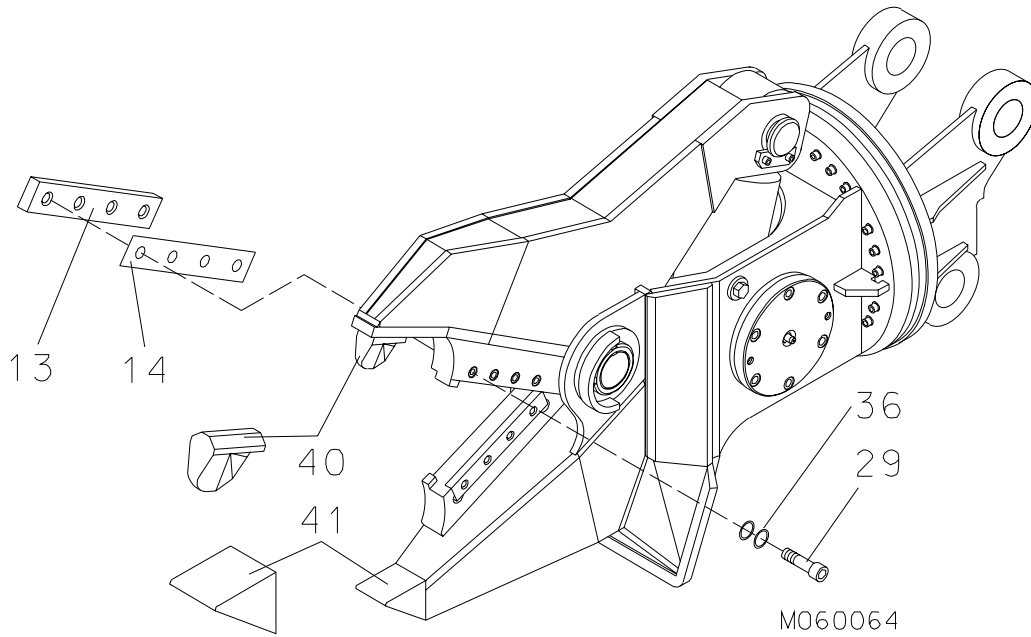
6. BODY PARTS RC 6



M060065

Item	Description	Part no.	Specification	Note	Qty
7	Shaft	140075			1
8	Shaft	140244			1
9	Cap	140259			2
10	Bush	140260			2
11	Bush	140270			1
15	Spacer plate	140262			2
16	Bar	140263			1
19	Plate	140283			1
21	Washer	140282			1
24	Axle nut	901624	KM12 M60x2 SKF		1
25	Lock washer	901625	MB12		1
27	Grease nipple	90201	R1/8		4
28	Hex. socket screw	91014	M12x25-8.8 DIN 912		12
33	Hex. socket screw	91020	M8x25-8.8 DIN 912		6
34	Lock washer	91011	M8 NORD-LOCK		6
42	Hex. screw	90514	M16x30-8.8 DIN 933		2
43	Lifting eye	90690	M16 DIN 580		1
44	Label set	141053			1

7. WEAR ITEMS RC 6



Item	Description	Part no.	Specification	Note	Qty
13	Cutting blade	140060			2
14	Shim plate	140140			x
29	Hex. socket screw	90555	M10x25-8.8 DIN 912		8
36	Lock washer	91037	NORD-LOCK M10		8
40	Breaking tooth	140168			1
41	Front tooth	140239			1

SANDVIK TAMROCK CORP.

Breakers Lahti

Taivalkatu 8, P.O. Box 165, FIN-15101 Lahti, Finland

Phone Int. +358 205 44 161, Telefax Int. +358 205 44 160,

Internet <http://www.rammer.com>