

ENG 9/03

PARTS MANUAL
PMRD18ENG.903

CUTTER-CRUSHER

RAMMER RD 18

Serial No.

RD18RC0043-UP

RD18BC0043-UP

TABLE OF CONTENTS

1. Cylinder RD 18.	4
2. Hydraulics RD 18.	6
3. Brake RD 18.	8
4. Hydraulic motor RD 18	9
5. Slewing ring RD 18.	10
6. Body parts RD 18 Demolition.	11
7. Body parts RD 18 Steel.	12
8. Wear items RD 18 Demolition	13
9. Wear items RD 18 Demolition with pulverizer	14
10. Wear items RD 18 Demolition with wood cutter	15
11. Wear items RD 18 Steel	16

GENUINE RAMMER SPARE PARTS

Rammer genuine spare parts are designed and manufactured by using the latest technological knowledge and engineering skills. Rammer spare parts are made of the best available materials with the most advanced manufacturing techniques.

It is important that you use only genuine Rammer spare parts, to ensure easy operation, maintenance and repair of the product. Please note that eventual warranty claims will be handled only if you have used genuine Rammer parts in your Rammer.

LOCATION OF THE SERIAL NUMBER

It's important to make correct reference to the serial number of the product when ordering spare parts. Identification of serial number is the only proper means of maintaining and identifying parts for a specific product. The location of equipment serial number is pointed in "Operation and maintenance" manual.

SPARE PART ORDERS

Quick spare part deliveries are secured by exact orders.

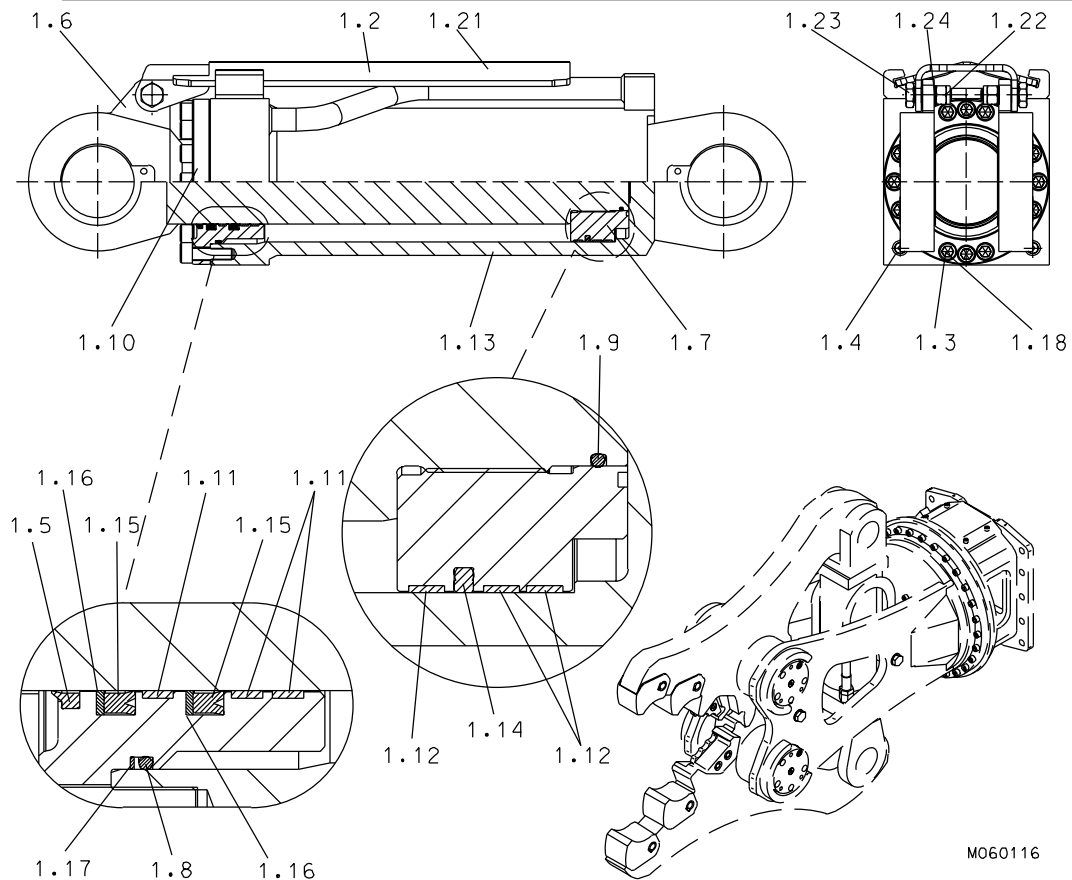
Required information:

- Name of customer and contact person
 - Order number (when available)
 - Delivery address
 - Mode of delivery (air mail etc.)
 - Required delivery date
 - Invoicing address
 - Model and serial number of the product
 - Name, number and required amount of spare parts
-

PARTS

CYLINDER RD 18

1. CYLINDER RD 18

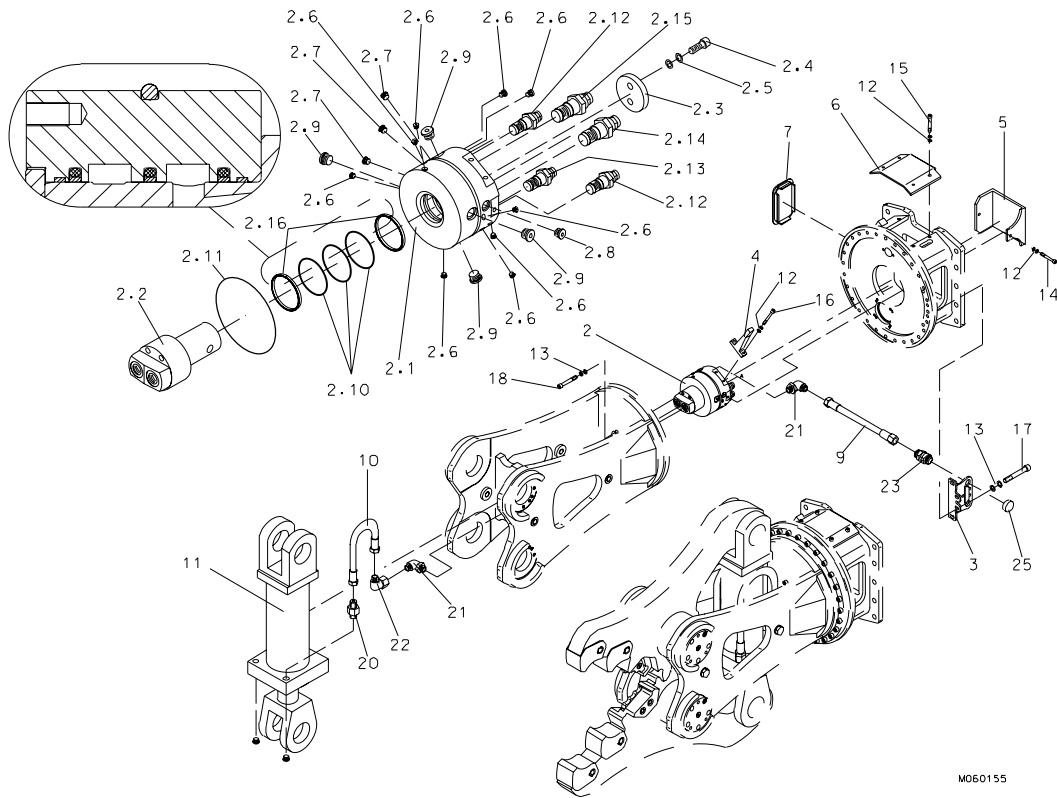


M060116

Item	Description	Part no.	Specification	Note	Qty
1	Hydraulic cylinder (incl. parts 1.01-1.18)	903396			1
1.2	Shield (incl. parts 1.21-1.24)	113410			1
1.21	Shield plate	150041			1
1.22	Nut	90579	M20-8 ISO 7040		2
1.23	Hex. screw	113619			2
1.24	Lock washer	91010	M20 NORD-LOCK		2
1.3	Hex. socket screw	91008	M20x65-8.8 ISO 4762		16
1.4	Flange plug	90403	G1/4		2
1.5	Wiper	950313			1
1.6	Piston rod	903398			1
1.7	Piston	903397			1
1.8	O-ring	903174	D194		1
1.9	O-ring	903405	D84		1
1.10	Guide	903399			1
1.11	Steering ring	903176			3
1.12	Steering ring	903402			3
1.13	Cylinder body	903400			1
1.14	Seal	903401			1

Item	Description	Part no.	Specification	Note	Qty
1.15	Seal	903403			2
1.16	Supporting ring	903404			2
1.17	Steering ring	903406			1
1.18	Lock washer	91010	M20 NORD-LOCK		16
2	Seal set for cylinder	950032			1

2. HYDRAULICS RD 18

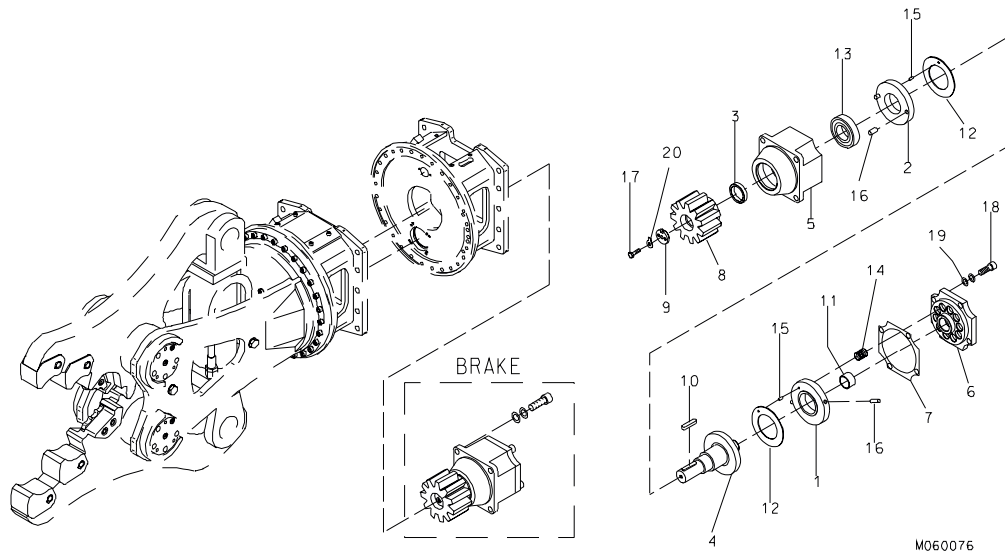


M060155

Item	Description	Part no.	Specification	Note	Qty
2	Bulkhead union (incl. parts 2.1-2.16)	111248			1
2.1	Body	111150			1
2.2	Spool	111148			1
2.3	Cover	111152			1
2.4	Hex. socket screw	91005	M16x45-8.8 DIN 912		2
2.5	Lock washer	90597	M16 NORD-LOCK		2
2.6	Flange plug	93203	G1/8		9
2.7	Flange plug	90403	G1/4		3
2.8	Flange plug	90424	G1/2		1
2.9	Flange plug	90401	G3/4		4
2.10	Seal	903163			3
2.11	O-ring	903162	D219		1
2.12	Valve	903165	SUN NFCC-LCN T-13A		2
2.13	Valve	903164	SUN CSAD-XXN T-11A		1
2.14	Valve	903167	SUN RSHC-LAN T-17A		1
2.15	Valve	903166	SUN CBGA-LHN T-17A		1

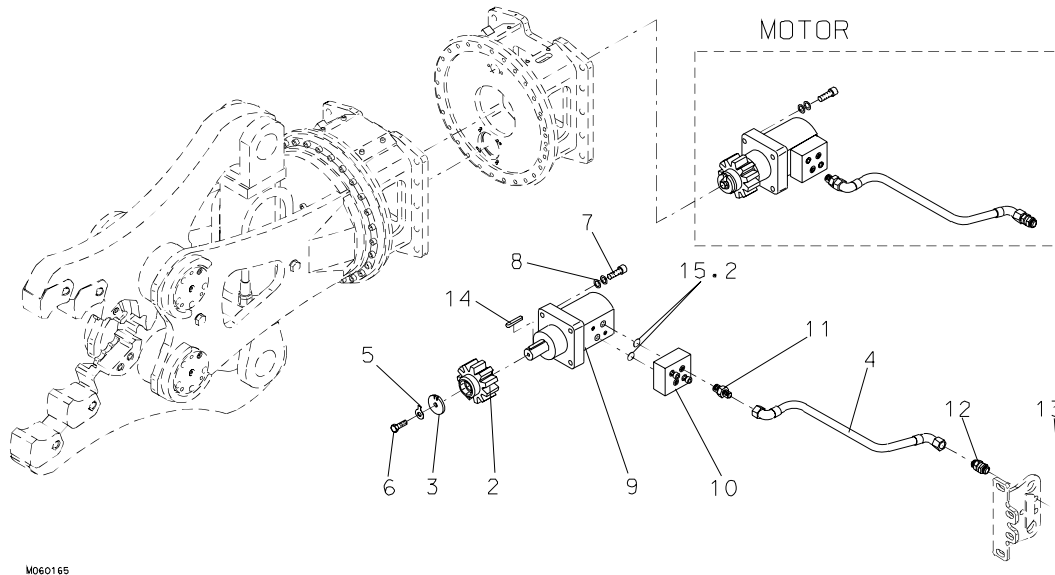
Item	Description	Part no.	Specification	Note	Qty
2.16	Guide-ring	951263			2
2.17	Seal set for bulkhead union	141299			1
2.18	Seal set for valve T-11A	903160			1
2.19	Seal set for valve T-13A	903159			2
2.20	Seal set for valve T-17A	903161			2
3	Support	111613			1
4	Support	111418			1
5	Shield plate	111623			1
6	Shield plate	111621			2
7	Plug	104100			1
9	Hose assembly	111645	L=272 mm		2
10	Hose assembly	111646	L=1070 mm		2
11	Hydraulic cylinder	903157			1
12	Lock washer	91012	M12 NORD-LOCK		12
13	Lock washer	90597	M16 NORD-LOCK		8
14	Hex. socket screw	903158	M12x20-8.8 DIN 912		2
15	Hex. socket screw	91045	M12x30-8.8 DIN 912		8
16	Hex. socket screw	90564	M12x40-8.8 DIN 912		2
17	Hex. socket screw	91100	M16x40-8.8 DIN 912		4
18	Hex. socket screw	91032	M16x50-8.8 DIN 912		4
20	Adapter	901583			2
21	Adapter	901585			4
22	Adapter	901602			2
23	Bulkhead union	90470			2
25	Cap	93070			2

3. BRAKE RD 18



Item	Description	Part no.	Specification	Note	Qty
Kit	Brake (incl. parts 1-20)	111384			1
1	Supporting ring	140195			1
2	Supporting ring	140196			1
3	Bushing	140197			1
4	Shaft	140198			1
5	Body	140294			1
6	Cover	140293			1
7	Spacer plate	140193			2
8	Cylindrical gear	111427			1
9	Washer	140052			1
10	Key	901482			1
11	Bush	901483			1
12	Plate	901484			2
13	Ball bearing	901485			1
14	Spring	901486			10
15	Parallel pin	901487			2
16	Parallel pin	901488			4
17	Hex. socket screw	91020	M8x25-8.8 DIN 912		1
18	Hex. socket screw	900046	M12x35-8.8 DIN 912		8
19	Lock washer	91012	M12 NORD-LOCK		8
20	Washer	902925	8.4 DIN 93		1

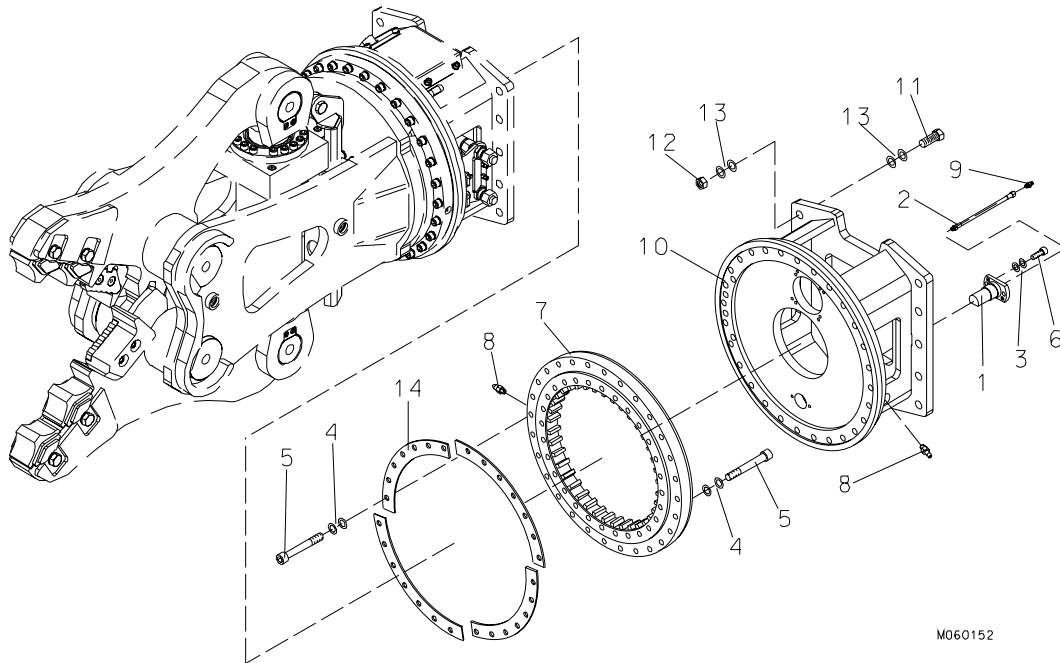
4. HYDRAULIC MOTOR RD 18



M060165

Item	Description	Part no.	Specification	Note	Qty
Kit	Hydraulic motor (incl. parts 2-14)	154390			1
2	Cylindrical gear	153490			1
3	Washer	153332			1
4	Hose assembly	111643			2
5	Washer	902925	8.4 DIN 93		1
6	Hexagon screw	90591	M8x20-8.8 ISO 4017		1
7	Hex. socket screw	900046	M12x35-8.8 ISO 4762		4
8	Lock washer	91012	M12 NORD-LOCK		4
9	Hydraulic motor	951451			1
10	Pressure adjusting valve (incl. part 15.2)	901320			1
11	Adapter	950038			2
12	Bulk head union	93239			2
13	Cap	93234			2
14	Key	903156			1
15.2	O-ring	903190	D23		2

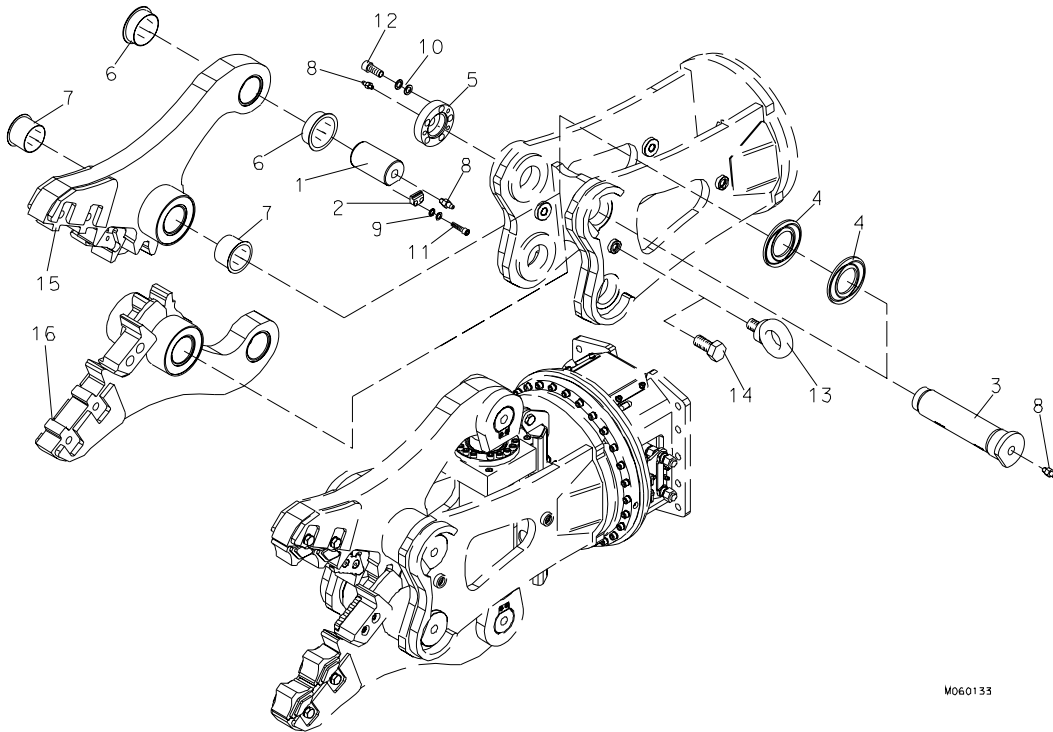
5. SLEWING RING RD 18



M060152

Item	Description	Part no.	Specification	Note	Qty
1	Guide	111417			1
2	Hose assembly	111637			1
3	Lock washer	91012	M12 NORD-LOCK		2
4	Lock washer	90597	M16 NORD-LOCK		56
5	Hex. socket screw	902940	M16x100-12.9 DIN 912		56
6	Hex. socket screw	91045	M12x30-8.8 DIN 912		2
7	Slewing ring	903147			1
8	Grease nipple	90204	M10x1 DIN 71412-T1 A		3
9	Adapter	903148			1
10	Fixture	111392			1
11	Hex. screw	90589	M24x110-12.9 DIN 931		10
12	Lock nut	90507	M24-12 DIN 985		10
13	Lock washer	91038	M24 NORD-LOCK		20
14	Plate	150187			4

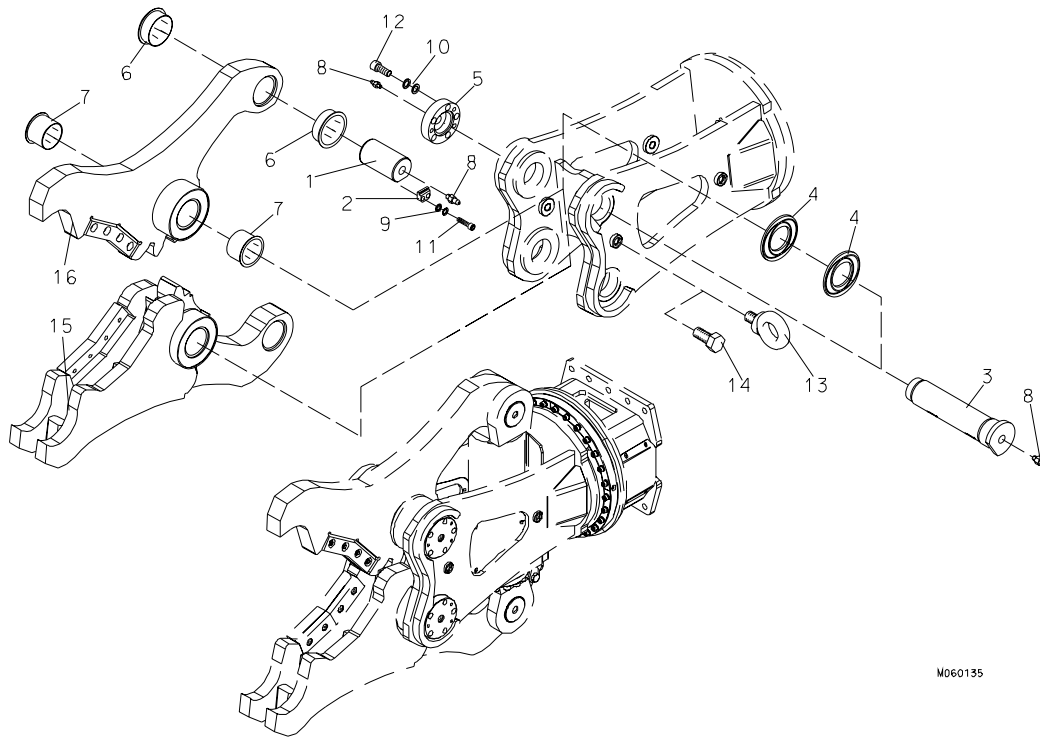
6. BODY PARTS RD 18 DEMOLITION



M060133

Item	Description	Part no.	Specification	Note	Qty
1	Shaft	111415			2
2	Bar	111416			2
3	Shaft	111414			2
4	Spacer	140118			2
5	Nut	111413			2
6	Sliding bear	903145	12050 Wieland WB802WF		4
7	Sliding bear	903146	12090 Wieland WB802WF		4
8	Grease nipple	90204	M10x1 DIN 71412-T1 A		6
9	Lock washer	91012	M12 NORD-LOCK		4
10	Lock washer	90597	M16 NORD-LOCK		2
11	Hex. socket screw	91045	M12x30-8.8 DIN 912		4
12	Hex. socket screw	91100	M16x40-8.8 DIN 912		2
13	Lifting eye	90705	M30 DIN 580		2
14	Hex. screw	900026	M30x40-8.8 DIN 933		4
15	Jaw 1 (incl. parts 6-7)	151052			1
16	Jaw 2 (incl. parts 6-7)	151053			1
17	Label set	111571			1

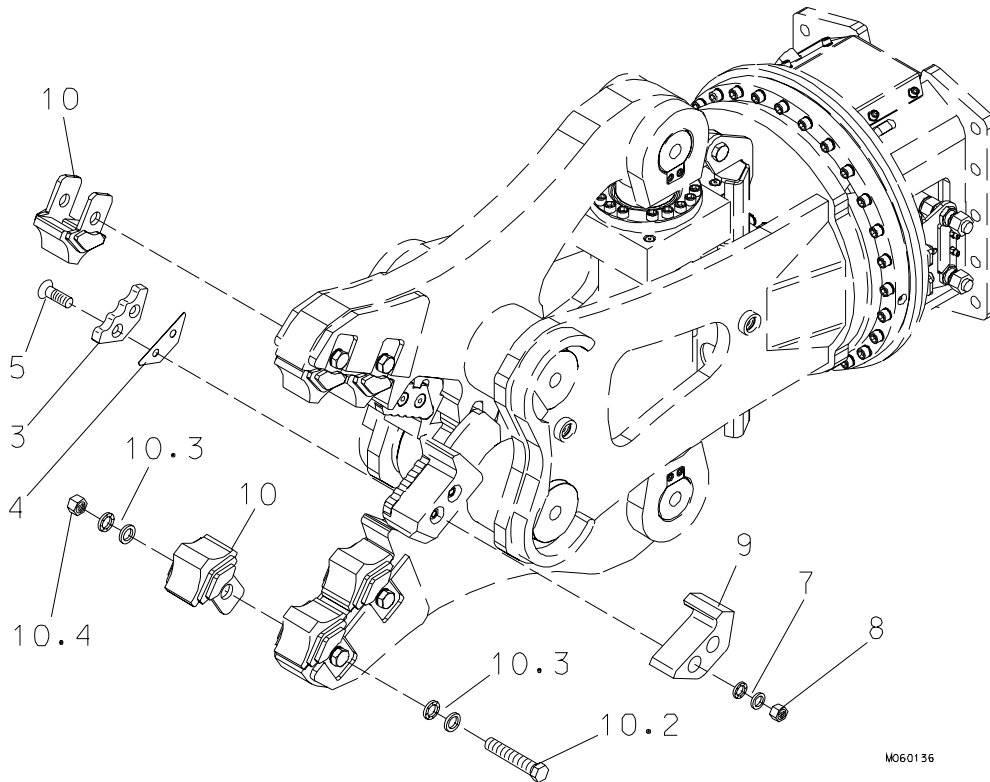
7. BODY PARTS RD 18 STEEL



M060135

Item	Description	Part no.	Specification	Note	Qty
1	Shaft	111415			2
2	Bar	111416			2
3	Shaft	111414			2
4	Spacer	140118			2
5	Nut	111413			2
6	Sliding bear	903145	12050 Wieland WB802WF		4
7	Sliding bear	903146	12090 Wieland WB802WF		4
8	Grease nipple	90204	M10x1 DIN 71412-T1 A		6
9	Lock washer	91012	M12 NORD-LOCK		4
10	Lock washer	90597	M16 NORD-LOCK		2
11	Hex. socket screw	91045	M12x30-8.8 DIN 912		4
12	Hex. socket screw	91100	M16x40-8.8 DIN 912		2
13	Lifting eye	90705	M30 DIN 580		2
14	Hex. screw	900026	M30x40-8.8 DIN 933		4
15	Jaw 1 (incl. parts 6-7)	152718			1
16	Jaw 2 (incl. parts 6-7)	152721			1
17	Label set	111571			1

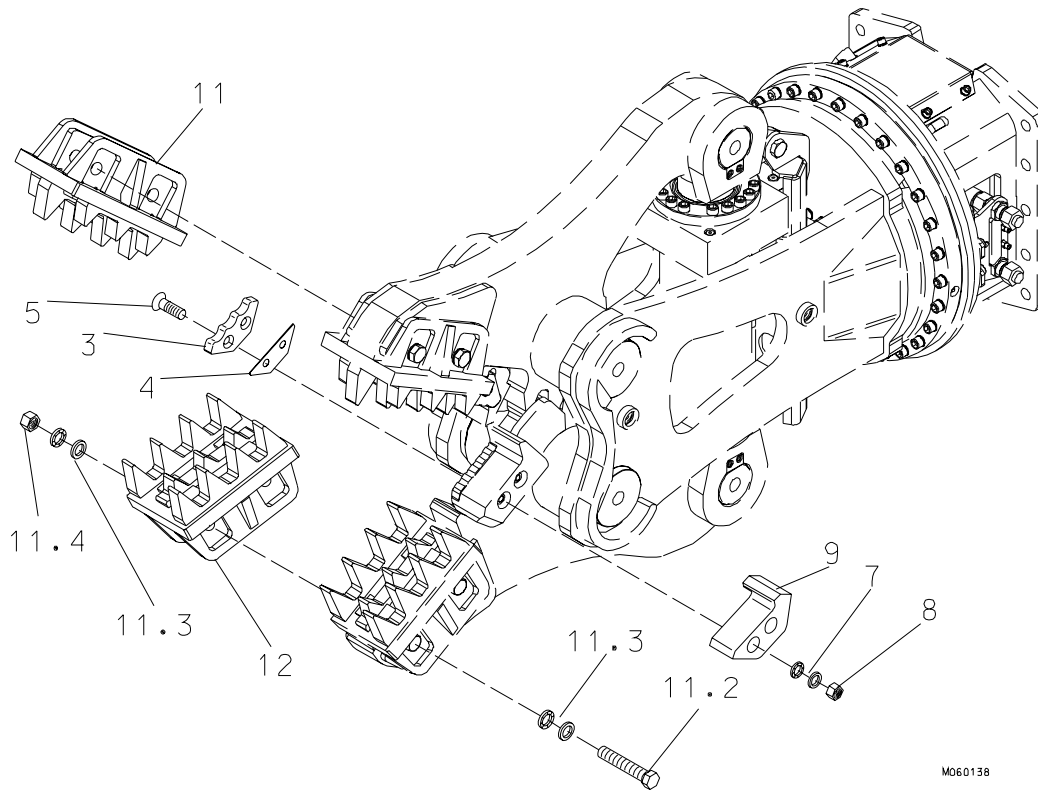
8. WEAR ITEMS RD 18 DEMOLITION



M060136

Item	Description	Part no.	Specification	Note	Qty
3	Cutting blade	111909			2
4	Shim plate	111910			2
5	Hex. socket screw	903151	M16x90-8.8 DIN 7991		4
7	Lock washer	90597	M16 NORD-LOCK		4
8	Lock nut	90548	M16-8 DIN 985		4
9	Cutting blade seat	111639			2
10	Tooth (incl. parts 10.2-10.4)	150203			4
10.2	Hex. screw	902970	M24x150-8.8 ISO 4017		1
10.3	Lock washer	91038	M24 NORD-LOCK		2
10.4	Hex. nut	91030	M24-8 ISO 4032		1

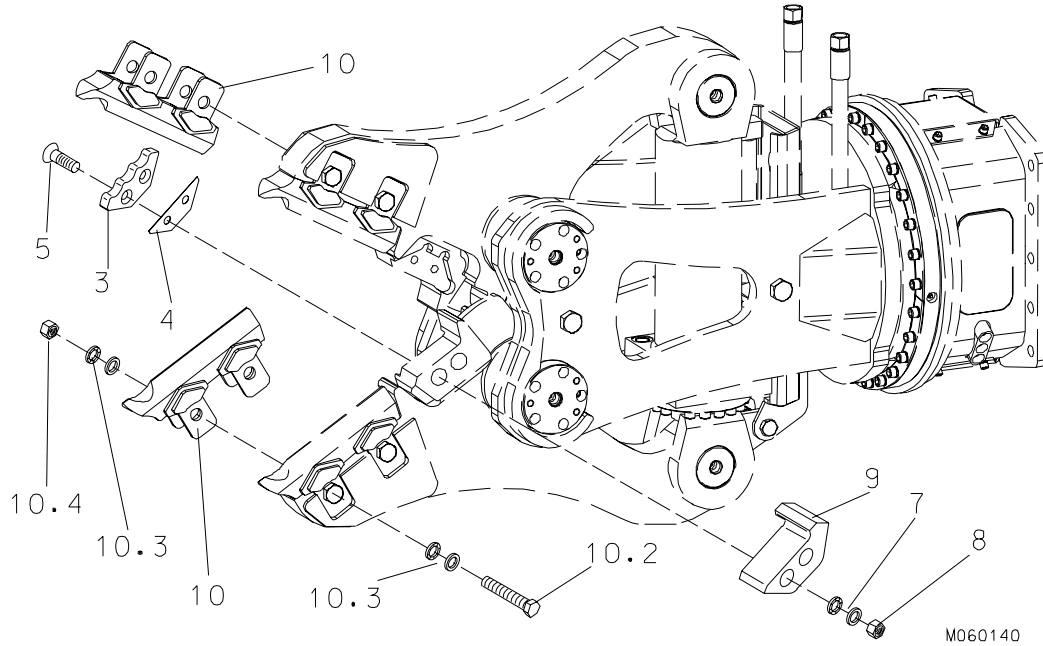
9. WEAR ITEMS RD 18 DEMOLITION WITH PULVERIZER



M060138

Item	Description	Part no.	Specification	Note	Qty
3	Cutting blade	111909			2
4	Shim plate	111910			2
5	Hex. socket screw	903151	M16x90-8.8 DIN 7991		4
7	Lock washer	90597	M16 NORD-LOCK		4
8	Lock nut	90548	M16-8 DIN 985		4
9	Cutting blade seat	111639			2
10	Pulverizing plate (incl. parts 11-12)	113382			1
11	Pulverizing plate (incl. parts 11.2-11.3)	150708			1
11.2	Hex. screw	950167	M24x180-8.8 ISO 4014		2
11.3	Lock washer	91038	M24 NORD-LOCK		4
11.4	Hex. nut	91030	M24-8 ISO 4032		2
12	Pulverizing plate (incl. parts 11.2-11.3)	150705			1

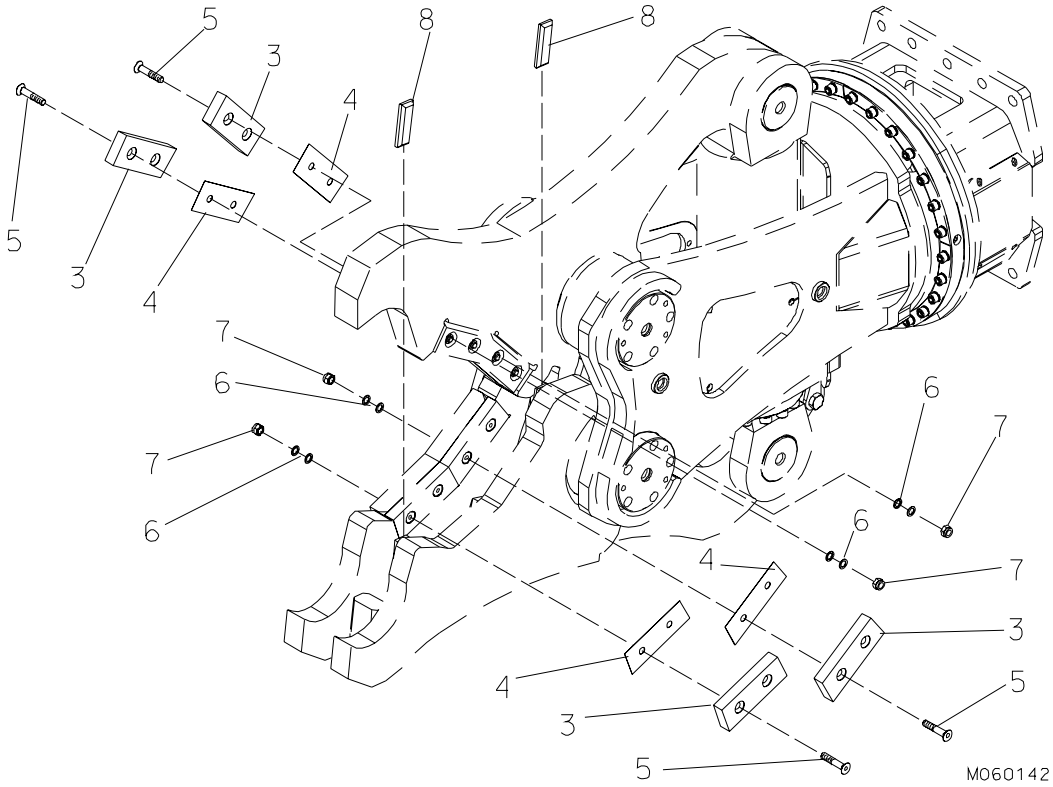
10. WEAR ITEMS RD 18 DEMOLITION WITH WOOD CUTTER



M060140

Item	Description	Part no.	Specification	Note	Qty
3	Cutting blade	111909			2
4	Shim plate	111910			2
5	Hex. socket screw	903151	M16x90-8.8 DIN 7991		4
7	Lock washer	90597	M16 NORD-LOCK		4
8	Lock nut	90548	M16-8 DIN 985		4
9	Cutting blade seat	111639			2
10	Wood cutting tooth (incl. parts 10.2-10.4)	151047			2
10.2	Hex. screw	902970	M24x150-8.8 ISO 4017		2
10.3	Lock washer	91038	M24 NORD-LOCK		4
10.4	Hex. nut	91030	M24-8 ISO 4032		2

11. WEAR ITEMS RD 18 STEEL



M060142

Item	Description	Part no.	Specification	Note	Qty
3	Cutting blade	151369			4
4	Shim plate	151483			4
5	Hex. socket screw	951091	M16x80-8.8 ISO 10642		8
6	Lock washer	90597	M16 NORD-LOCK		8
7	Hex. nut	90548	M16-8 ISO 10511		8
8	Plate	152578			2

Sandvik Tamrock Corp., Breakers Lahti
Taivalkatu 8, P.O. Box 165, FIN-15101 Lahti, Finland
Phone Int. +358 205 44 161, Telefax Int. +358 205 44 160
www.rammer.com