

ENG 9/03

**PARTS MANUAL**  
**PMRD32ENG.903**

**CUTTER-CRUSHER**  
**RAMMER RD 32**

**Serial No.**  
**RD32RA0019-UP**

---

## TABLE OF CONTENTS

1. Cylinder RD 32. . . . .	4
2. Hydraulics RD 32. . . . .	6
3. Brake RD 32. . . . .	8
4. Hydraulic motor RD 32 . . . . .	9
5. Slewing ring RD 32. . . . .	10
6. Body parts RD 32 Demolition. . . . .	11
7. Wear items RD 32 Demolition . . . . .	12
8. Wear items RD 32 Demolition with pulverizer . . . . .	13

---

## GENUINE RAMMER SPARE PARTS

Rammer genuine spare parts are designed and manufactured by using the latest technological knowledge and engineering skills. Rammer spare parts are made of the best available materials with the most advanced manufacturing techniques.

It is important that you use only genuine Rammer spare parts, to ensure easy operation, maintenance and repair of the product. Please note that eventual warranty claims will be handled only if you have used genuine Rammer parts in your Rammer.

## LOCATION OF THE SERIAL NUMBER

It's important to make correct reference to the serial number of the product when ordering spare parts. Identification of serial number is the only proper means of maintaining and identifying parts for a specific product. The location of equipment serial number is pointed in "Operation and maintenance" manual.

## SPARE PART ORDERS

Quick spare part deliveries are secured by exact orders.

### Required information:

- Name of customer and contact person
  - Order number (when available)
  - Delivery address
  - Mode of delivery (air mail etc.)
  - Required delivery date
  - Invoicing address
  - Model and serial number of the product
  - Name, number and required amount of spare parts
-

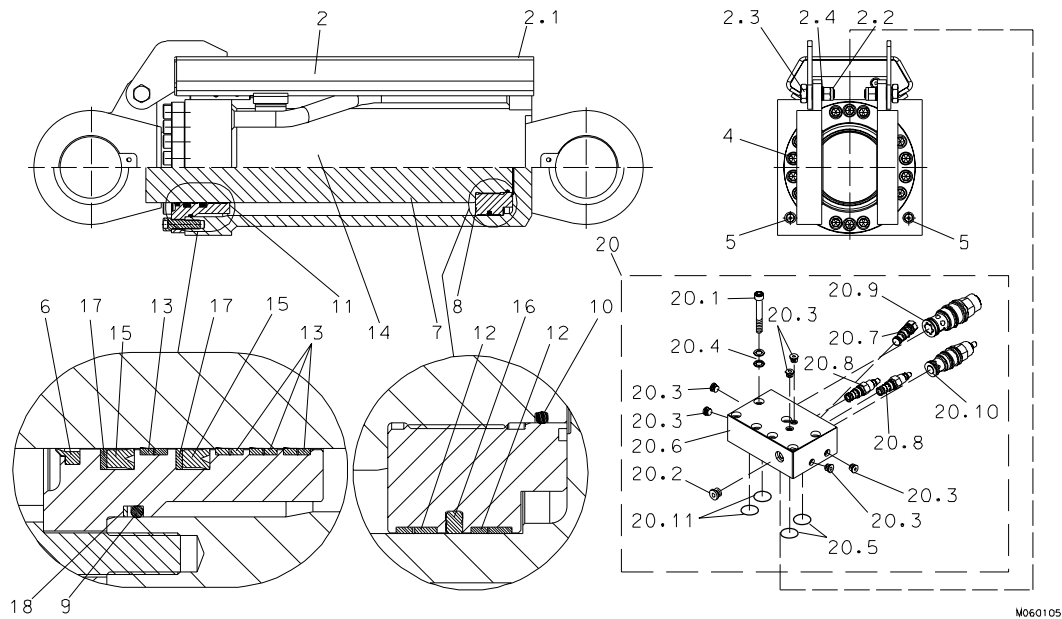
---

---

# **PARTS**

---

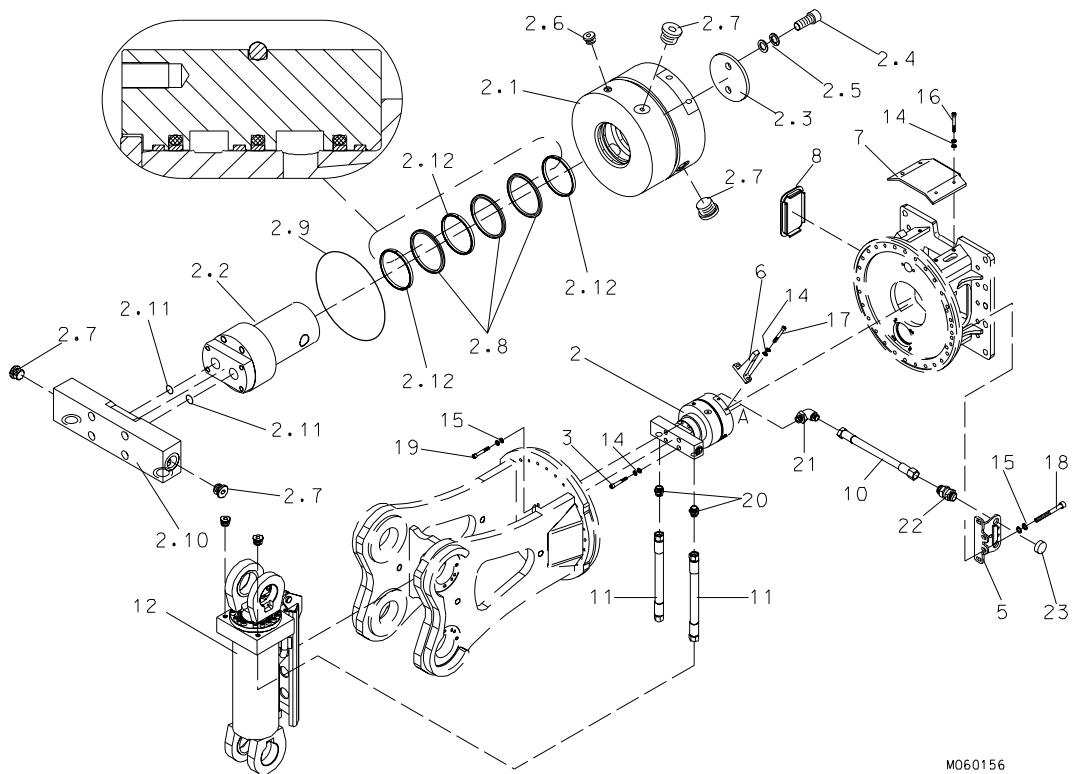
# 1. CYLINDER RD 32



Item	Description	Part no.	Specification	Note	Qty
1	Hydraulic cylinder (incl. parts 2-18)	903365			1
2	Shield (incl. parts 2.1-2.4)	113259			1
2.1	Shield plate	113141			1
2.2	Nut	90579	M20-8 ISO 7040		2
2.3	Hex. screw	113169			2
2.4	Lock washer	91010	M20 NORD-LOCK		2
4	Hex. socket screw	91008	M20x65-8.8 ISO 4762		18
5	Flange plug	90403	G1/4		2
6	Wiper	950336			1
7	Piston rod	903367			1
8	Piston	903368			1
9	O-ring	930075	D214		1
10	O-ring	910001	D104		1
11	Guide	903369			1
12	Steering ring	903376	220/214x19.5		2
13	Steering ring	903377	160/166x13		4
14	Body	903366			1
15	Seal	903371	160/180x13		2
16	Seal	903372	220/199x8.1		1
17	Supporting ring	903373	160/180x3		2
18	Supporting ring	903374	215/225-1.7		1
20	Valve (incl. parts 20.1-20.11)	112641			1
20.1	Hex. socket screw	902465	M12x80-10.9 ISO 4762		7
20.2	Flange plug	90403	G1/4		1

<b>Item</b>	<b>Description</b>	<b>Part no.</b>	<b>Specification</b>	<b>Note</b>	<b>Qty</b>
20.3	Flange plug	93203	G1/8		6
20.4	Lock washer	91012	M12 NORD-LOCK		7
20.5	O-ring	94022	D28		2
20.6	Body	112639			1
20.7	Valve	903164	SUN CSAD-XXN T-11A		1
20.8	Valve	903165	SUN NFCC-LCN T-13A		2
20.9	Valve	903279	SUN CBIA-LHN T-19A		1
20.10	Valve	903167	SUN RSHC-LAN T-17A		1
20.11	O-ring	90009	D38		2
20.12	Seal set for valve T-11A	903160			1
20.13	Seal set for valve T-13A	903159			2
20.14	Seal set for valve T-17A	903161			1
20.15	Seal set for valve T-19A	950031			1
30	Seal set for cylinder	950168			1

## 2. HYDRAULICS RD 32

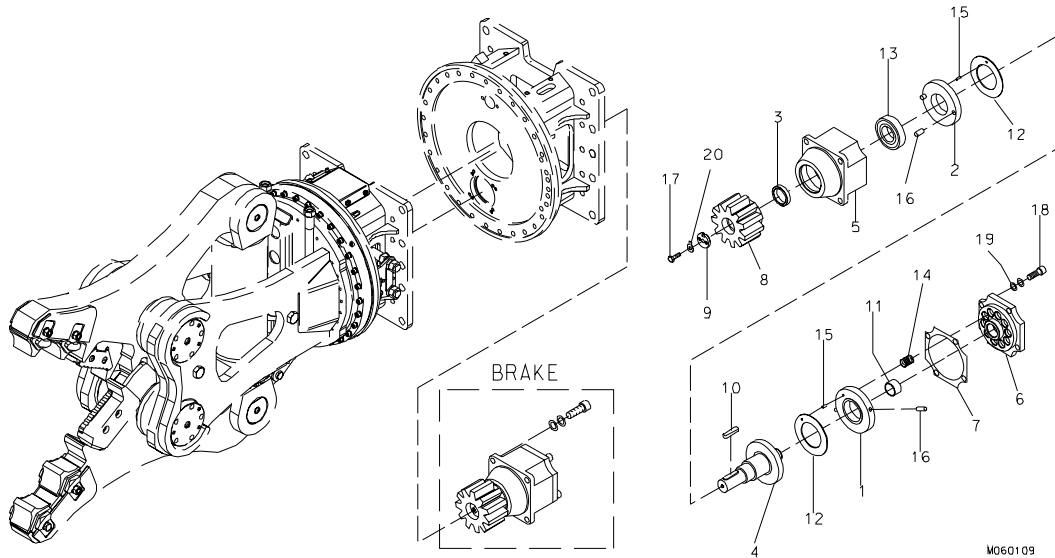


M060156

Item	Description	Part no.	Specification	Note	Qty
2	Bulkhead union (incl. parts 2.1-2.12)	112708			1
2.1	Body	112707			1
2.2	Spool	150753			1
2.3	Cover	112705			1
2.4	Hex. socket screw	91005	M16x45-8.8 DIN 912		2
2.5	Lock washer	90597	M16 NORD-LOCK		2
2.6	Flange plug	93203	G1/8		1
2.7	Flange plug	90410	G1		4
2.8	Seal	950183			3
2.9	O-ring	950186	D250		1
2.10	Manifold	150752			1
2.11	O-ring	90009	D38		2
2.12	Guide-ring	951334			3
2.13	Seal set for bulkhead union	151252			1
3	Hex. socket screw	900000	M12x70-8.8 ISO 4762		4
5	Support	112977			1
6	Support	112975			1
7	Shield plate	111621			2
8	Plug	104100			1
10	Hose assembly	151012			2

<b>Item</b>	<b>Description</b>	<b>Part no.</b>	<b>Specification</b>	<b>Note</b>	<b>Qty</b>
11	Hose assembly	151013			2
12	Hydraulic cylinder	903365			1
14	Lock washer	91012	M12 NORD-LOCK		14
15	Lock washer	90597	M16 NORD-LOCK		8
16	Hex. socket screw	91045	M12x30-8.8 ISO 4762		8
17	Hex. socket screw	90564	M12x40-8.8 ISO 4762		2
18	Hex. socket screw	91100	M16x40-8.8 ISO 4762		4
19	Hex. socket screw	91032	M16x50-8.8 ISO 4762		4
20	Adapter	901884			2
21	Elbow	901882			2
22	Bulkhead union	90469			2
23	Cap	90431			2

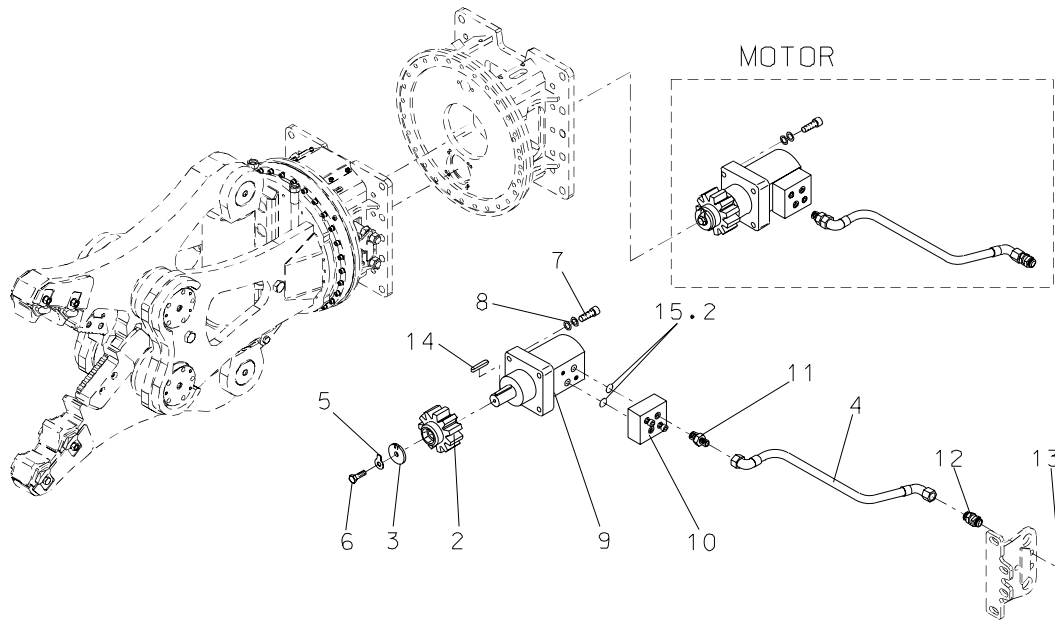
**3. BRAKE RD 32**



Item	Description	Part no.	Specification	Note	Qty
Kit	Brake (incl. parts 1-20)	151238			1
1	Supporting ring	140195			1
2	Supporting ring	140196			1
3	Bushing	140197			1
4	Shaft	140198			1
5	Body	140294			1
6	Cover	140293			1
7	Spacer plate	140193			2
8	Cylindrical gear	112929			1
9	Washer	140052			1
10	Key	901482			1
11	Bush	901483			1
12	Plate	901484			2
13	Ball bearing	901485			1
14	Spring	901486			10
15	Parallel pin	901487			2
16	Parallel pin	901488			4
17	Hexagon screw	90570	M8x2.5-8.8 ISO 4017		1
18	Hex. socket screw	900046	M12x35-8.8 ISO 4762		8
19	Lock washer	91012	M12 NORD-LOCK		8
20	Washer	902925	8.4 DIN 93		1



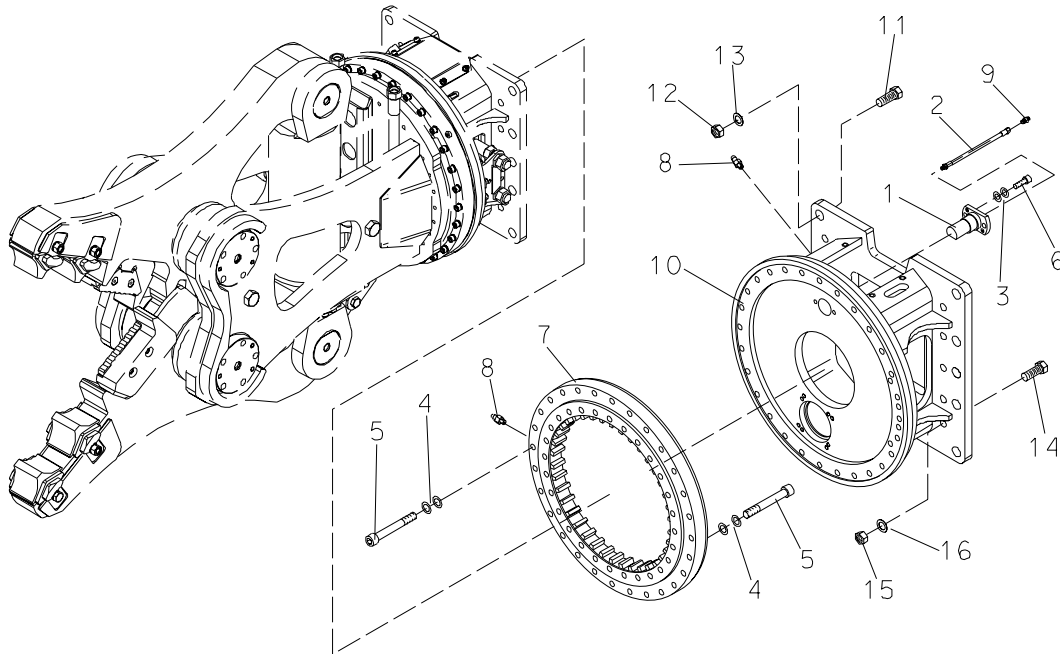
## 4. HYDRAULIC MOTOR RD 32



M060166

Item	Description	Part no.	Specification	Note	Qty
Kit	Hydraulic motor (incl. parts 2-14)	154403			1
2	Cylindrical gear	154143			1
3	Washer	153332			1
4	Hose assembly	111643			2
5	Washer	902925	8.4 DIN 93		1
6	Hexagon screw	90591	M8x20-8.8 ISO 4017		1
7	Hex. socket screw	900046	M12x35-8.8 ISO 4762		4
8	Lock washer	91012	M12 NORD-LOCK		4
9	Hydraulic motor	951451			1
10	Pressure adjusting valve (incl. part 15.2)	901320			1
11	Adapter	950038			2
12	Bulk head union	93239			2
13	Cap	93234			2
14	Key	903156			1
15.2	O-ring	903190	D23		2

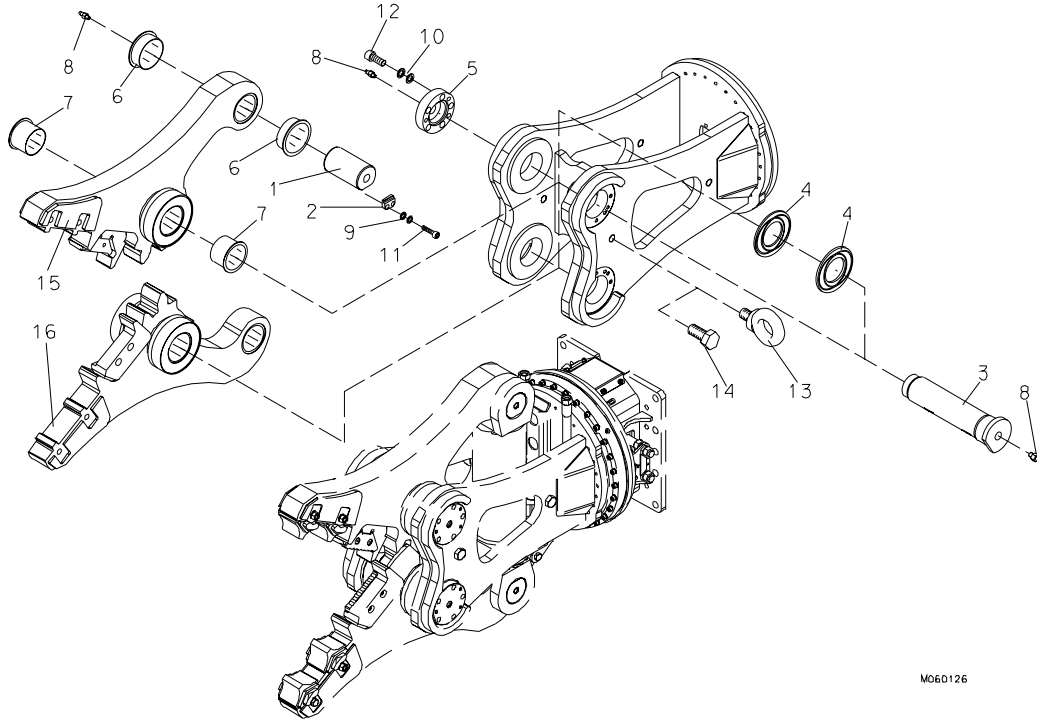
**5. SLEWING RING RD 32**



M060153

Item	Description	Part no.	Specification	Note	Qty
1	Guide	111417			1
2	Hose assembly	111637			1
3	Lock washer	91012	M12 NORD-LOCK		2
4	Lock washer	90597	M16 NORD-LOCK		60
5	Hex. socket screw	902915	M16x110-12.9 ISO 4762		60
6	Hex. socket screw	91045	M12x30-8.8 DIN 912		2
7	Slewing ring	901318			1
8	Grease nipple	90204	M10x1 DIN 71412-T1 A		3
9	Adapter	903148			1
10	Mounting bracket	112738			1
11	Hexagon screw	90589	M24x110-12.9 DIN 931		14
12	Lock nut	90507	M24-12 DIN 985		14
13	Washer	90511	25 DIN 6916		14
14	Hexagon screw	90520	M36x140-8.8 DIN 931		14
15	Lock nut	90519	M36-8 DIN 985		14
16	Washer	90521	37 DIN 6916		14

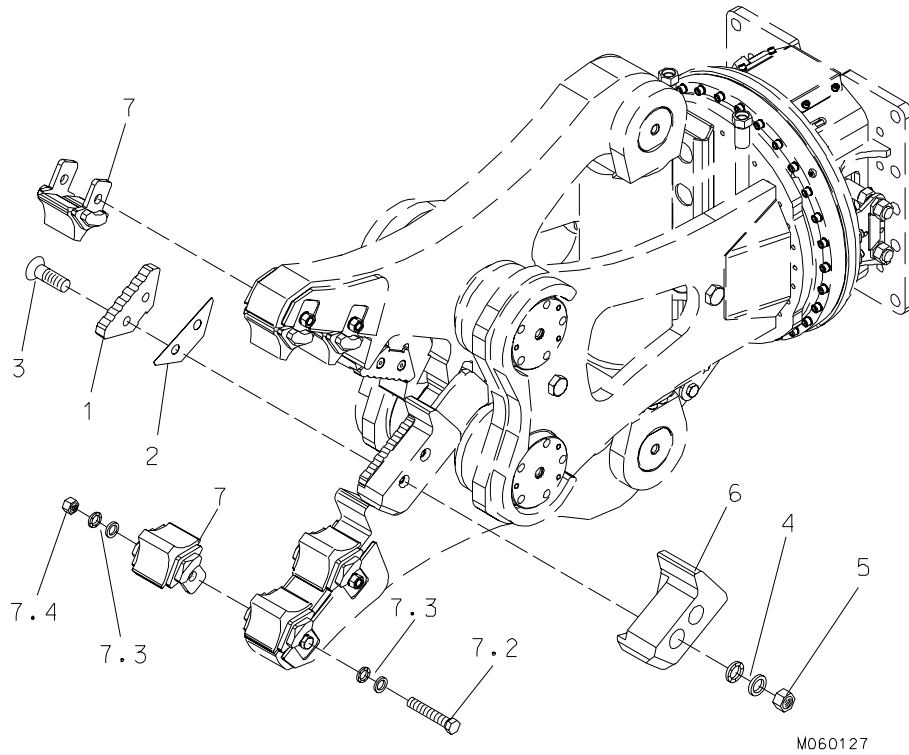
## 6. BODY PARTS RD 32 DEMOLITION



M060126

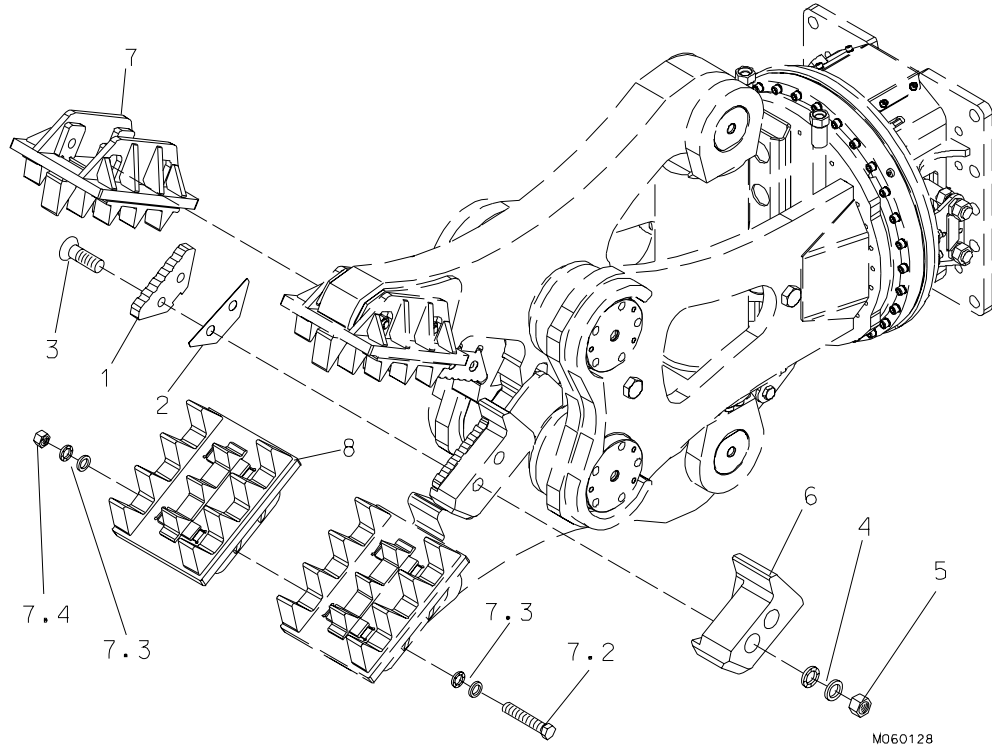
Item	Description	Part no.	Specification	Note	Qty
1	Shaft	112947			2
2	Bar	111416			2
3	Shaft	112942			2
4	Spacer	112945			2
5	Nut	112944			2
6	Sliding bear	950180	14060 Wieland WB802WF		4
7	Sliding bear	950179	14090 Wieland WB802WF		4
8	Grease nipple	90204	M10x1 DIN 71412-T1 A		6
9	Lock washer	91037	M10 NORD-LOCK		4
10	Lock washer	90597	M16 NORD-LOCK		2
11	Hex. socket screw	90504	M10x30-8.8 ISO 4762		4
12	Hex. socket screw	91100	M16x40-8.8 ISO 4762		2
13	Lifting eye	901464	M36 DIN 580		2
14	Hexagon screw	901465	M36x40-8.8 ISO 4017		4
15	Jaw 1 (incl. parts 6-7)	151253			1
16	Jaw 2 (incl. parts 6-7)	151254			1
17	Label set	151181			1

**7. WEAR ITEMS RD 32 DEMOLITION**



Item	Description	Part no.	Specification	Note	Qty
1	Cutting blade	112713			2
2	Shim plate	112714			2
3	Hex. socket screw	903151	M16x90-8.8 ISO 10642		4
4	Lock washer	90597	M16 NORD-LOCK		4
5	Lock nut	90548	M16-8 ISO 10511		8
6	Cutting blade seat	151255			2
7	Tooth (incl. parts 7.2-7.4)	151523			4
7.2	Hex. screw	950167	M24x180-8.8 ISO 4014		1
7.3	Lock washer	91038	M24 NORD-LOCK		2
7.4	Hex. nut	91030	M24-8 ISO 4032		1

**8. WEAR ITEMS RD 32 DEMOLITION WITH PULVERIZER**



Item	Description	Part no.	Specification	Note	Qty
1	Cutting blade	112713			2
2	Shim plate	112714			2
3	Hex. socket screw	903151	M16x90-8.8 ISO 10642		4
4	Lock washer	90597	M16 NORD-LOCK		4
5	Lock nut	90548	M16-8 ISO 10511		8
6	Cutting blade seat	151255			2
Kit	Pulverizing plate (incl. parts 7-8)	151171			1
7	Pulverizing plate (incl. parts 7.2-7.4)	151527			1
7.2	Hex. screw	91108	M24x200-8.8 ISO 4014		2
7.3	Lock washer	91038	M24 NORD-LOCK		4
7.4	Hex. nut	91030	M24-8 ISO 4032		2
8	Pulverizing plate (incl. parts 7.2-7.4)	151526			1





**Sandvik Tamrock Corp., Breakers Lahti**  
**Taivalkatu 8, P.O. Box 165, FIN-15101 Lahti, Finland**  
**Phone Int. +358 205 44 161, Telefax Int. +358 205 44 160**  
**[www.rammer.com](http://www.rammer.com)**