



**Demolition
Cutter**

RDC Series

**RDC25
RDC32**



Parts Manual – RDC Series

Keep this manual in a convenient location so that it is easily accessible for future reference. Contact your Allied Dealer or the Allied Customer Service Department for replacement manuals. Inquiries regarding the content of this manual must include effective date shown on inside cover.





3900 Kelley Ave
Cleveland, Ohio 44114
Tel: 216-431-2600
www.alliedcp.com

Contact Information

Fax: 216-431-2601
E-mail: sales@alliedcp.com

Continuous improvement of our products is an Allied policy. The material in this publication, including figures, captions, descriptions, remarks and specifications, describe the product at the time of its printing, and may not reflect the product in the future. When changes become necessary, these will be noted in the table below. Specifications are based on published information at the time of publication. Allied Construction Products, LLC, reserves the right to change, edit, delete or modify the content of this document, including descriptions, illustrations and specifications without prior notification. For product or document updates go to www.alliedcp.com.

Table of Revision History for Document PM577504

<u>Effective Date</u>	<u>Page</u>	<u>Summary of Change</u>
2014, Sep	All	Original issue of PM577504

Table of Contents

<u>Section</u>	<u>Page</u>
Document Revisions	i
Table of Contents	ii
List of Figures	ii
1.0 Introduction & Scope	1
1.1 Purpose of This Manual.....	1
1.2 How To Order Replacement Manuals.....	1
1.3 Related Publications.....	1
2.0 Equipment Identification	2
2.1 Serial Number Location.....	2
2.2 Equipment Identification Label.....	2
2.3 Owner's Record of the Equipment.....	2
3.0 Safety, Identification & Information Labels	3
4.0 Spare / Replacement Parts	5
4.1 RDC Main Assemblies – Scope of Delivery	5
4.2 Shear Body, Cutting Blades and Teeth.....	6
4.3 Upper Jaw Assembly, Tooth, Blades.....	7
4.4 Main Pin, Bushings, Hydraulic Cylinder.....	9
4.5 Subhead & Rotation Assembly.....	11
4.6 Swivel Joint Assembly.....	13
4.7 Hydraulics Inside Subhead.....	14
4.8 Hydraulic Cylinder Assembly – RDC25.....	15
4.9 Hydraulic Cylinder Assembly - RDC32.....	17
4.10 Hydraulic Connections to Cylinder.....	19
5.0 How to Order Spare Parts.....	21
List of Figures	Page
2-1 Equipment Identification.....	2
2-2 Equipment Identification Label.....	2
LA- Label Position & Label Description.....	3
LB – Position of Lubrication Points.....	4

<u>List of Figures</u>	<u>Page</u>
4-1 RDC Main Assemblies.....	5
4-2 0932-01.00.0.B Shear Body, Teeth Blades	6
4-3 0932-02.00.B Upper Jaw Assembly.....	7
4-4 0932-03.00.B Main Pins, Cylinder.....	9
4-5 0933-04.00.A Subhead Assembly.....	11
4-6 0933-05.01.0 Hydraulic Swivel Joint.....	13
4-7 0933-07.00.0 Hydraulic Piping Subhead...	14
4-8 0933-06.00.0 Hydraulic Cylinder RDC25..	17
4-9 0932-06.01.0 Hydraulic Cylinder RDC32..	19
4-10 Hydraulic Piping – Cylinder Speed Valve	21

<u>List of Tables</u>	<u>Page</u>
1.1 About This Manual.....	1
3.1 Ordering Information For Labels.....	4
3.2 Lubrication Points.....	4
4.1 Main Assemblies.....	6
4.1.1 Scope of Delivery.....	5
4.2.1 Shear Body Assembly – RDC32.....	6
4.2.2 Shear Body Assembly – RDC25.....	6
4.3.1 Upper Jaw Assembly – RDC 32.....	8
4.3.2 Upper Jaw Assembly – RDC25.....	8
4.4.1 Main Pin, Cylinder, Bushings – RDC32	10
4.4.2 Main Pin, Cylinder, Bushings – RDC25	10
4.5 Subhead Rotation Assembly.....	12
4.6 Swivel Joint Assembly.....	13
4.7 Hydraulic Piping Inside Subhead.....	14
4.8 Hydraulic Cylinder – RDC25.....	16
4.9 Hydraulic Cylinder – RDC32.....	18
4.10 Hydraulic Piping Cylinder Speed Valve	20

1.0 Introduction and Scope

1.1 Purpose of This Manual

Table 1.1 About This Manual



Document ID.	PM577504
Type	Spare / Replacement Parts List
Current Status*	See Inside Cover
Product Name:	Demolition Cutter
Series	RDC
Applicable Model[s]:	RDC25, RDC32
Years of Manufacture:	Begin 2014
*Inquiries regarding this manual must include effective date shown on inside cover	

The material presented in this manual has been prepared in support of the product named in Table 1.1. Information is only for use with model(s) identified.

The publication identified in Table 1.1 was created solely for information purposes and should not be considered all-inclusive. If further information is required, contact your local Allied dealer or the Allied Customer Service Department.

Parts Manuals do not include safety precautions or operating procedures. Figures depict views that are intended for parts identification and not for purposes of repair or service of the product. Material presented in this manual, including tables, figures, descriptions and captions, may show equipment that is optional.

How to use this Manual:

The Allied work tool consists of separate components and partial assemblies. Components are identified through the aid of figures, captions, item key, part name and quantity. If needed, 'Notes', 'Remarks' and 'Specifications' will further clarify a part's description or denote assignment with select unit(s) by serial number, model number or both.

An order form is provided at the back of this manual. Prior to ordering parts, confirm that the information recorded on the equipment's identification label corresponds with Table 1.1. For the location of this label, refer to Section 2.0 of this manual.

The content of this document has been reviewed for accuracy. Allied Construction Products, LLC has

endeavored to deliver the highest degree of accuracy and every effort has made to provide information as complete as possible. However, continuous improvement of our products is an Allied policy. The material in this publication, including figures, captions, descriptions, remarks and specifications, describe the product at the time of its printing, and may not reflect the product in the future. A table of revision history for this document is found on the inside cover.

1.2 How To Order Replacement Publications

This manual is an integral part of this product. Keep it in a convenient location so that it is easily accessible for future reference. If replacement manuals are required, they may be ordered by contacting your Allied dealer service center. Manuals may also be viewed and downloaded at: www.alliedcp.com

1.3 Related Publications

Allied Construction Products, LLC offers the following publications for the product identified in Table 1.1.

1.3.1 Safety, Operation & Maintenance Manual

SOM577505

Applicable Models: RDC25, RDC32

The Safety, Operation and Maintenance Manual has been prepared to assist the operator and maintenance personnel with the information necessary for the safe and proper use of the Allied work tool.

Content in the Safety, Operation & Maintenance Manual includes:

- Safety Information
- Equipment Serial Number and Model Identification
- Technical Data (Weight & General Dimensions)
- Basic Guidelines for Installation and Set-up
- Pre-Operation Inspection
- How to Operate the Allied Work Tool
- Maintenance Schedule
- Troubleshooting
- Removal From Carrier, Transporting, Lifting & Storage
- Technical Data (Weight & General Dimensions)

Repair Manual 577500

Content includes Jaw Maintenance and Repair.

2.0 Equipment Identification

2.1 Equipment Identification

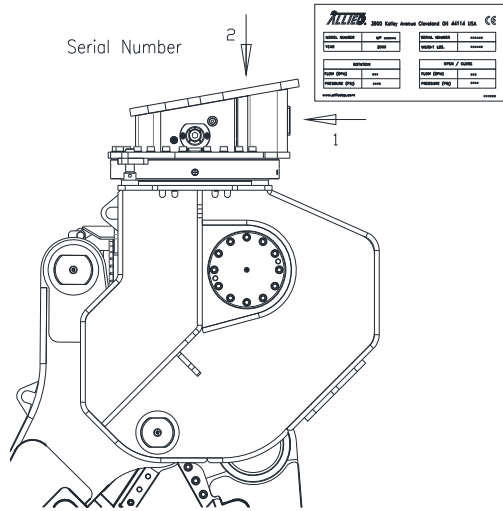


Fig 2-1 Serial Number Location

Refer to Fig. 2-1. The Serial Number assigned to the Allied equipment is located on the Equipment Identification Label. A duplicate label is located inside the subhead.

2.2 Equipment Identification / Information Tag

ALLIED 3900 Kelley Avenue Cleveland OH 44114 USA			
MODEL NUMBER	RDC25R	SERIAL NUMBER	000
YEAR	2014	WEIGHT LBS.	000
ROTATION		OPEN / CLOSE	
FLOW (GPM)	000	FLOW (GPM)	000
PRESSURE (PSI)	000	PRESSURE (PSI)	000
1-800-321-1046		www.alliedcp.com pn-xxxxxx	

Fig 2-2 Equipment Identification Label

The Equipment Identification Label is affixed to the subhead. It provides the following information:

- Allied Name and Address
- Model number
- Serial number
- Year of manufacture
- Weight
- Rotation – Flow / Pressure
- Jaw – Flow / Pressure

Confirm that the information contained on the Label corresponds with the information provided in Section 1, Table 1.1.

2.3 Owner's Record of the Equipment

Your local Allied dealer requires complete information about the equipment to better assist you with questions regarding parts, warranty, operation, maintenance, or repair.

- Record the equipment's serial number to the space provided below. This information may be obtained from the Equipment Identification Tag. Refer to Fig 2-1 for the location of the tag.
- Indicate the date in which the Allied equipment was placed into service.
- Indicate the date in which the Warranty Registration form was completed and returned to Allied.

Product Name: Demolition Cutter

Series: RDC

Model / Part No. RDC25 / 577643

Model / Part No. RDC32 / 577644

Serial Number: _____

In Service Date: _____

Registration Date: _____

Model RDC25 / RDC32

R	
D	Demolition
C	Cutter
25	Carrier Weight (t-metric)

3.0 Safety, Identification and Information Labels

3.1 Safety, Identification and Information Labels

Information labels affixed to the Allied equipment include safety warnings, identification and instructions important to operation and service.

Words and illustrations must be readable. Keep all safety labels clean. Replace damaged or missing labels before operating this equipment. Refer to Table 3.2 for ordering information. Refer to Figures "L-A" and "L-B" for their position on the equipment.

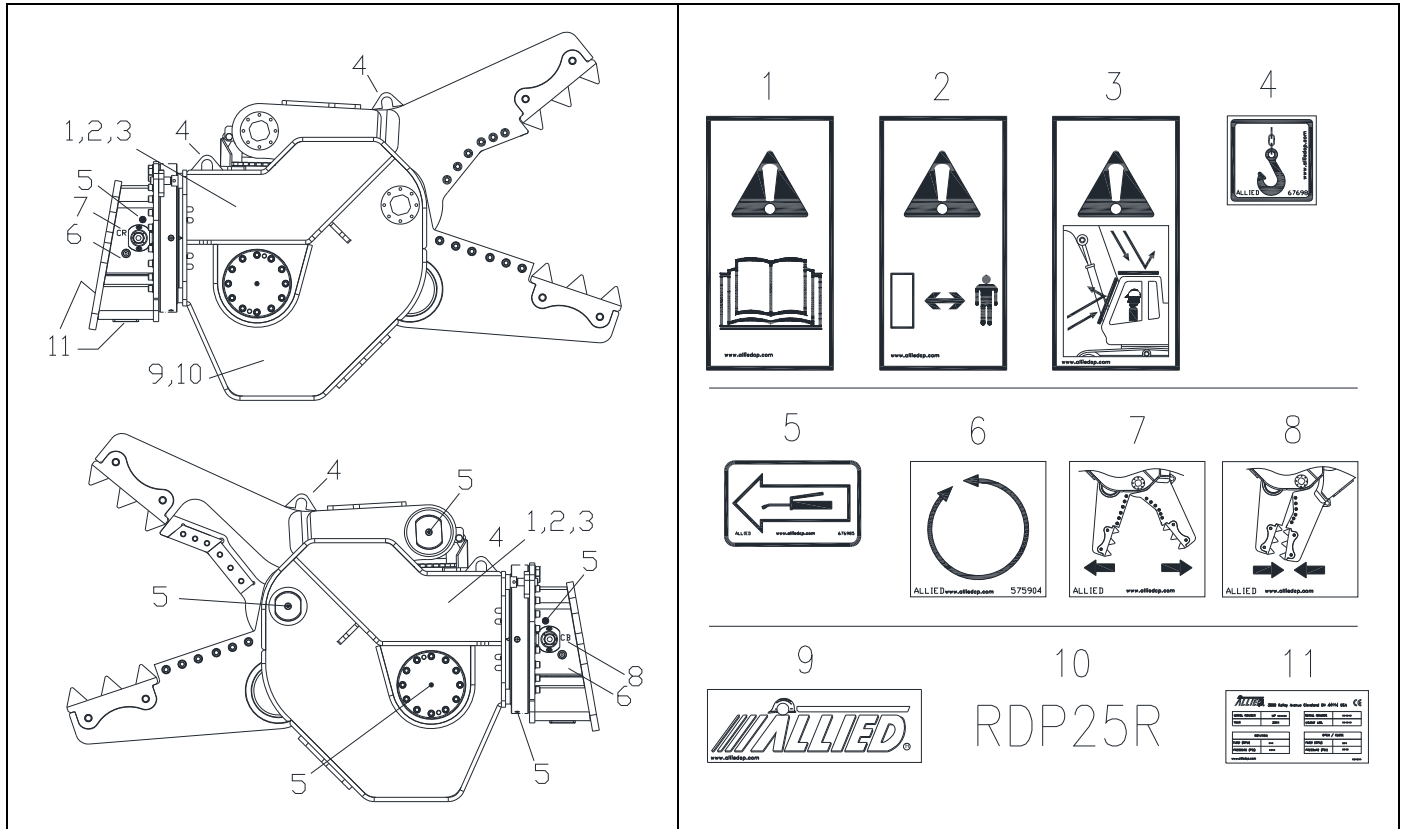


Fig. L-A Label Position – RDC

1. Safety Alert Symbol / Read the Manual - Directs personnel to the manual for safety-related precautions and further instructions regarding operation and maintenance procedures.

2. Stay Clear – Alerts personnel and by-standers to maintain a safe distance from the work tool during operation.

3. Flying Debris Hazard – Alerts of the need for a protective guard to shield the operator from debris generated when the work tool is in operation.

4. Lift Point – Marks lift points for safe handling of the work tool.

5. Lubrication Point – Pictogram of instruction manual and grease gun is used to identify lubrication points. Read the manual(s) for application instructions, grease type and re-lubrication schedule.

6. Rotation – Marks the location of hydraulic connection port for motor rotation. Pictogram indicates rotation is bi-directional 360°.

7 & 8. Hydraulic Connections - Oil drop next to either CB or CR connection port. Oil flow to CB port => JAW CLOSE. Oil flow to CR port => JAW OPEN.

9. ALLIED Logo – The Allied brand identifier and is a registered trademark of Allied Construction Products, LLC.

10. Model Identification – Identifies the Model of the Allied Mobile Shear

11. Equipment ID - Contains identifying information about the equipment, including: Product name, model number, serial number, company name and address.

3.0 Safety, Identification and Information Labels

Table 3.1 Safety, Identification & Information Labels

<u>Pos</u>	<u>Part Name</u>	<u>Part No.</u>	<u>Description / Specification</u>	<u>Qty</u>	<u>Note</u>
---	Label Set	577501	RDC and RDP Includes Items 1-9	1	
1	Label	676984	Pictogram, Read Instructions	2	2
2	Label	840156	Pictogram, Stay Clear	2	2
3	Label	575948	Pictogram, Guards Installed	2	2
4	Label	676982	Pictogram, Lift Point	3	
5	Label	676985	Pictogram, Lube Point	10	
6	Label	575904	Pictogram, Rotation-Bi-directional 360°	2	2
7	Label	577433	(CR) Cylinder Rod => Jaw Open	1	
8	Label	577432	(CB) Cylinder Barrel => Jaw Close	1	
9	Label	676656	Allied Logo	2	2
10.1	Label	577509	Model RDC25	2	1, 2
10.2		577508	Model RDC32		
11	Label	577478	Equipment Identification	1	1

1: Not Included in Label Set

2: Apply label to LH & RH side.

Cylinder Barrel (CB) => Jaw Close, Cylinder Rod (CR) => Jaw Open

Table 3.2 Lubrication Points

<u>Pos</u>	<u>Part Name</u>	<u>Qty</u>
A	Main Pin	1
B	Cylinder Pin (rod eye)	1
C	Cylinder Pin (trunnion)	2
D	Main Cylinder Pin	1
E	Gear, slewing ring	1
F	Bearing, slewing ring	4

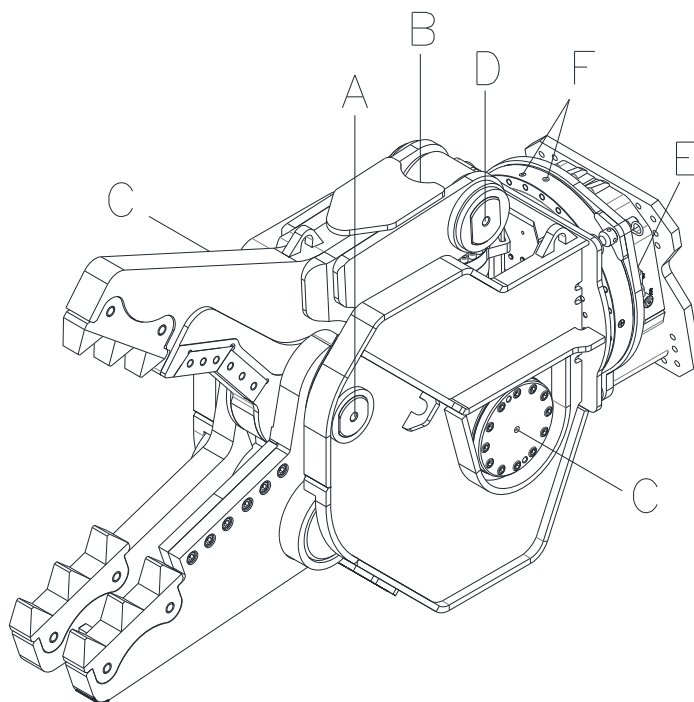
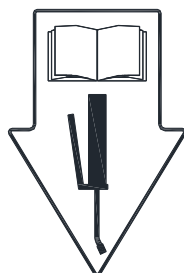


Fig. L-B Lubrication Points

4.0 Spare Parts Identification

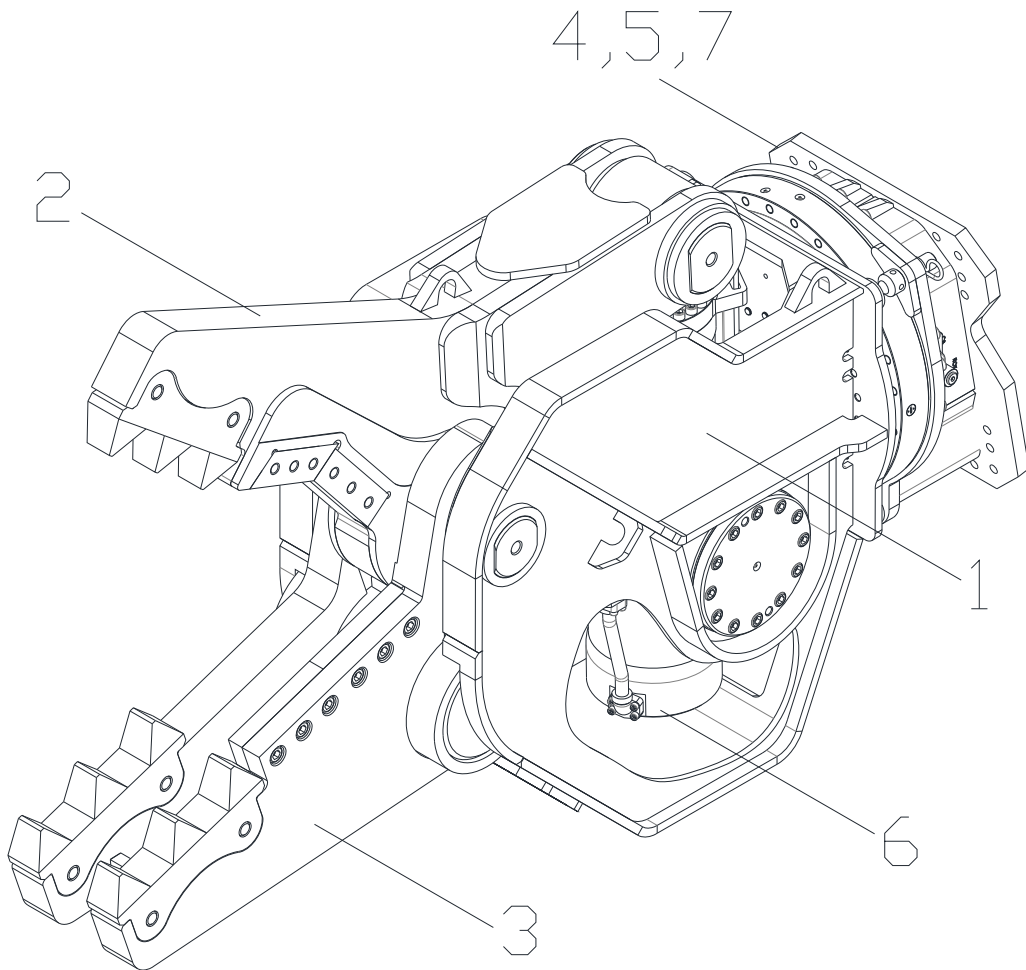


Fig. 4-1 Main Assemblies RDC

Table 4.1 Main Assemblies

<u>Pos</u>	<u>Name</u>	<u>Page</u>
---	RDC25 Part Number 577643*	5
---	RDC32 Part Number 577644*	5
1	Shear Body	6
2	Jaw - Upper	7
3	Jaw - Lower	6
4	Subhead	11
5	Hydraulic Swivel	13
6	Hydraulic Cylinder	9
7	Hydraulic Circuit - Rotation	14

Table 4.1.1 Scope of Delivery

*Delivered complete with:		
✓ Assembled, tested, painted & decaled		
✓ Safety, Operation & Maintenance Manual		
✓ Parts Manual		
✓ Bolt Set for Mounting Bracket		
Items Not Included – Order separately		
Hose	Jaw - CB	Jaw - CR
Hose	Rotation - CW	Rotation - CCW
Mounting Bracket		

Cylinder Barrel (CB) => Jaw Close, Cylinder Rod (CR) => Jaw Open

4.0 Spare Parts Identification

Unless otherwise noted, figures are common to both RDC25 and RDC32

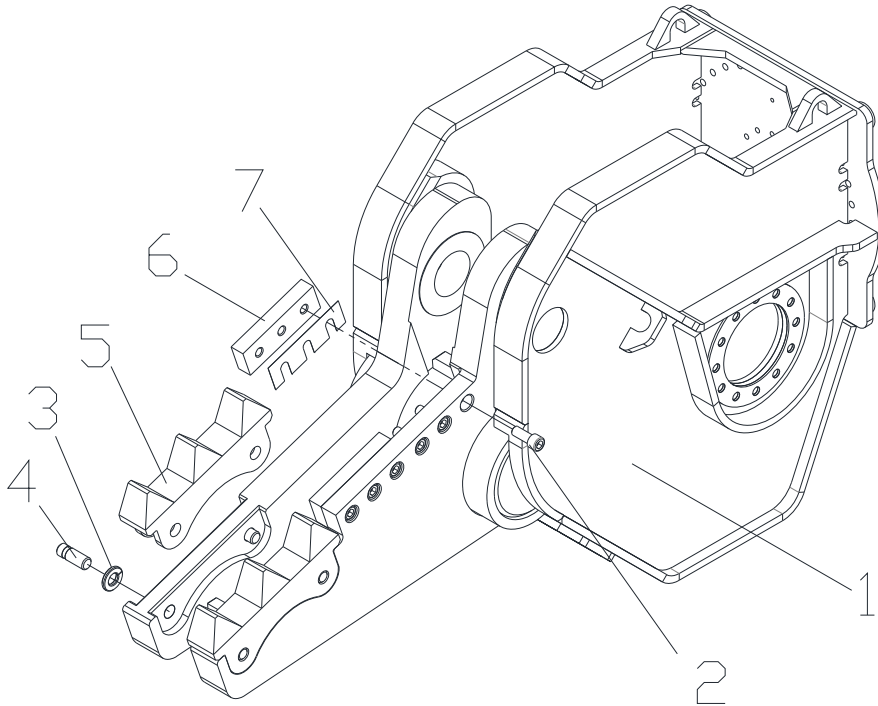


Fig. 4-2 RDC (0932-01.00.B)

Table 4.2.1 RDC25 / RDC32 Common parts unless noted

<u>Pos</u>	<u>Part Name</u>	<u>Part No.</u>	<u>Specification</u>	<u>Qty</u>	<u>Note</u>
1	Shear Body	PR0932200		1	1
2	Socket Head Bolt	ZZBM07000240060	M24 x 60 mm DIN 912-12.9	6	
3	Retaining Ring	SPEAN10242		4	
4	Pin	PR0925005		4	
5	Tooth	PR0925001		2	
6	Blade	PR0932001	40x80x250	2	1
7	Shim Set - Blade	PR0932002		1	1

Table 4.2.2 RDC25 parts only

<u>Pos</u>	<u>Part Name</u>	<u>Part No.</u>	<u>Specification</u>	<u>Qty</u>	<u>Note</u>
1	Shear Body	PR0925200		1	2
6	Blade	PR0925002	40x80x200	2	2
7	Shim Set - Blade	PR0925007		1	2

Unless otherwise noted, parts are common to both RDC25 and RDC32

1. For use with RDC32.

2. For use with RDC25.

4.0 Spare Parts Identification

Unless otherwise noted, figures are common to both RDC25 and RDC32

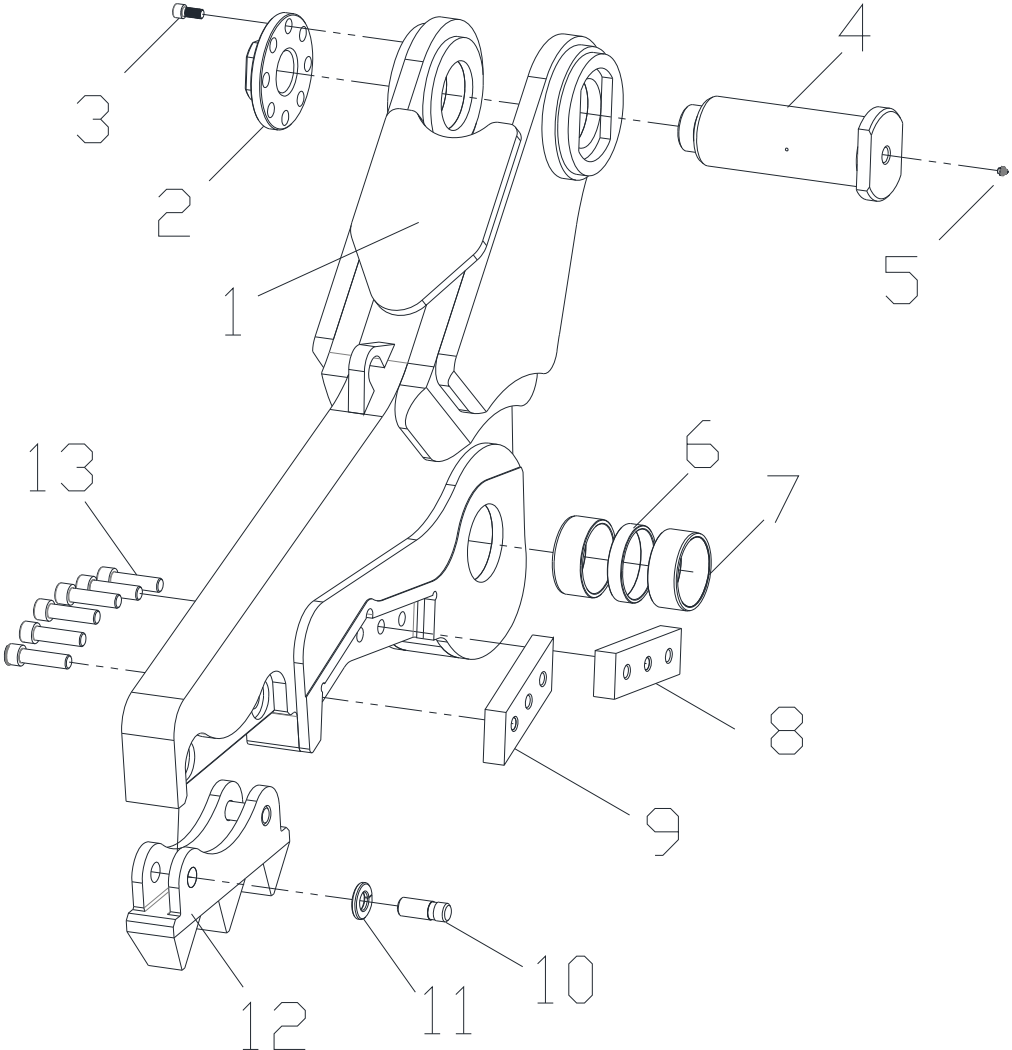


Fig. 4-3 RDC (0932-02.00.B)

4.0 Spare Parts Identification

Table 4.3.1 RDC25 / RDC32 common parts unless noted

<u>Pos</u>	<u>Part Name</u>	<u>Part No.</u>	<u>Specification</u>	<u>Qty</u>	<u>Note</u>
1	Upper Jaw	PR0932500		1	1
2	Nut	PR0933003	M80x4	1	1
3	Socket Head Bolt	ZZBM07060160035	M16 x 35 mm DIN 912-8.8	1	
4	Main Cylinder Pin	PR0933006		1	1
5	Grease fitting	ZZBM72240031180		1	
6	Pivot bushing	PR0925006		1	
7	Wear bush	ZZLA12013555		2	
8	Blade 40x80x250	PR0932001		1	1
9	Quer Blade 40x80x246	PR0925003		1	
10	Pin	PR0925005		2	
11	Retaining Ring	SPEAN10242		2	
12	Tooth Series	PR0925001		1	
13	Socket Head Bolt	ZZBM07000240090	M24 x 90 mm DIN 912-12.9	6	

Table 4.3.2 RDC25 parts only

<u>Pos</u>	<u>Part Name</u>	<u>Part No.</u>	<u>Specification</u>	<u>Qty</u>	<u>Note</u>
1	Upper Jaw	PR0925500		1	2
2	Nut	PR0926003	M60x4	1	2
4	Main Cylinder Pin	PR0926004		1	2
8	Blade	PR0925002	40x80x200	1	2

Unless otherwise noted, parts are common to both RDC25 and RDC32

1. For use with RDC32.

2. For use with RDC25.

4.0 Spare Parts Identification

Unless otherwise noted, figures are common to both RDC25 and RDC32

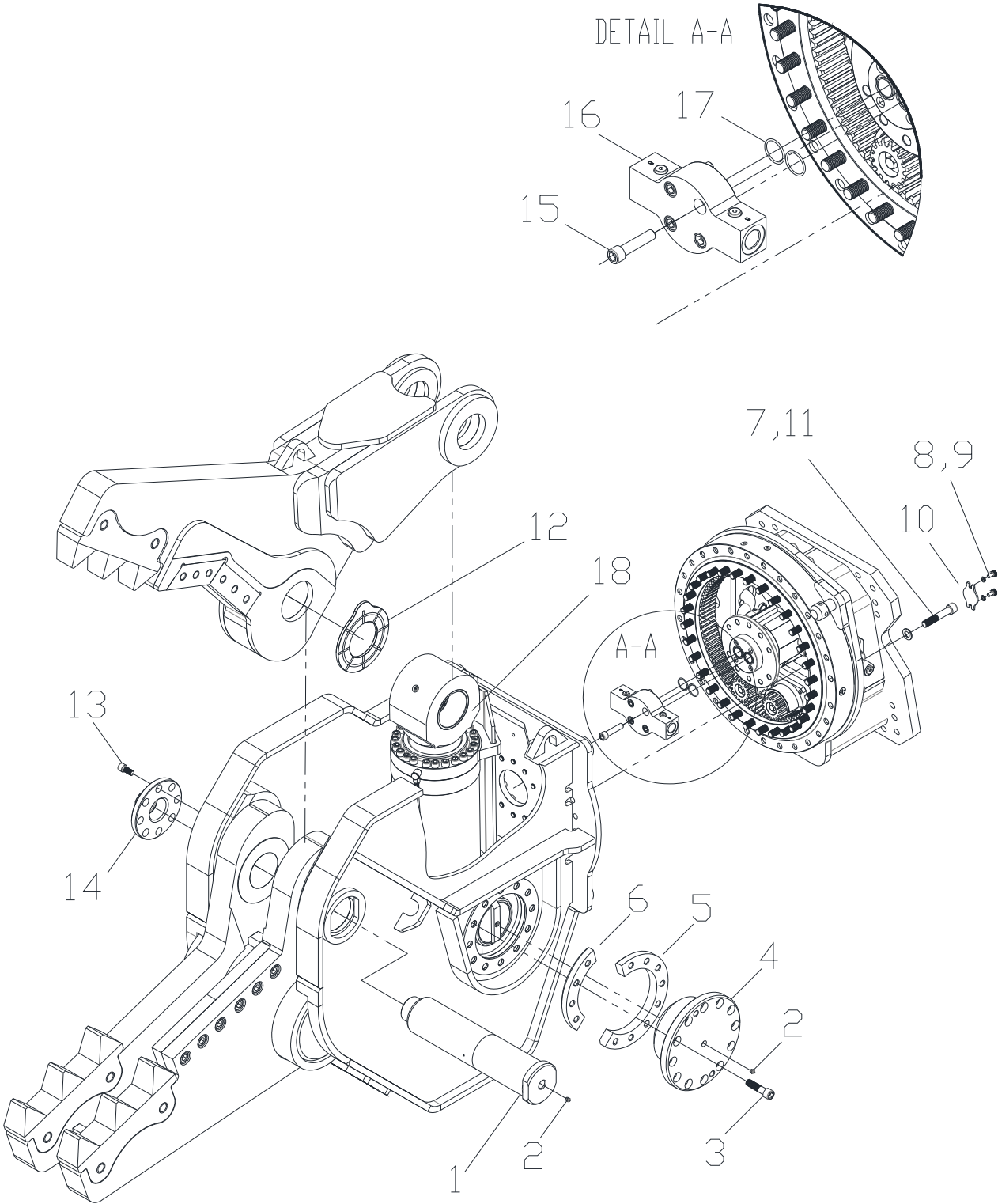


Fig. 4-4 RDC (0932-03.00.B)

4.0 Spare Parts Identification

Table 4.4.1 RDC25 / RDC32 common parts unless noted

<u>Pos</u>	<u>Part Name</u>	<u>Part No.</u>	<u>Specification</u>	<u>Qty</u>	<u>Note</u>
1	Main Pin	PR0933002		1	1
2	Grease fitting	ZZBM72240031180		3	
3	Socket Head Bolt	ZZBM07000200080	M20 x 80 mm DIN 912-12.9	24	
4	Outer Cylinder Retainer	PR0933007		2	1
5	Inner Cylinder Retainer Big	PR0933008		2	1
6	Inner Cylinder Retainer Small	PR0933009		2	1
7	Peiner High Strength Structural Washer	ZZBM04030200001	M20 DIN 6916	28	
8	Hex Head Bolt	ZZBM01010100020	M10 x 20 mm DIN 933-8.8	4	
9	NORD-LOCK washer	ZZBM37963100001	NL 10	4	
10	Cover plate filing spot	PR0061112		2	
11	Socket Head Bolt	ZZBM07000200110	M20 x 110 mm DIN 912-12.9	58	
12	Main Pivot Shim	PR0925004		2	
13	Hex Head Bolt	ZZBM07060160035	M16 x 35 mm DIN 912-8.8	14	
14	Nut	PR0933003	M80 x 4	1	
15	Hex Head Bolt	ZZBM07000160070	M16 x 70 mm DIN 912-12.9	4	
16	Swivel Flange	PR0933017		1	
17	O-Ring	ZZDS14041001600		2	
18	Hydraulic Cylinder	ZZCLGH1365	Requires Serial Number	1	1

Table 4.4.2 RDC25 parts only

<u>Pos</u>	<u>Part Name</u>	<u>Part No.</u>	<u>Specification</u>	<u>Qty</u>	<u>Note</u>
1	Main Pin	PR0926001		1	2
4	Outer Cylinder Retainer	PR0926005		2	2
5	Inner Cylinder Retainer Big	PR0926006		2	2
6	Inner Cylinder Retainer Small	PR0926007		2	2
18	Hydraulic Cylinder	ZZCLGH1364	Requires Serial Number	1	2

Unless otherwise noted, parts are common to both RDC25 and RDC32

1. For use with RDC32.

2. For use with RDC25.

4.0 Spare Parts Identification

Unless otherwise noted, figures are common to both RDC25 and RDC32

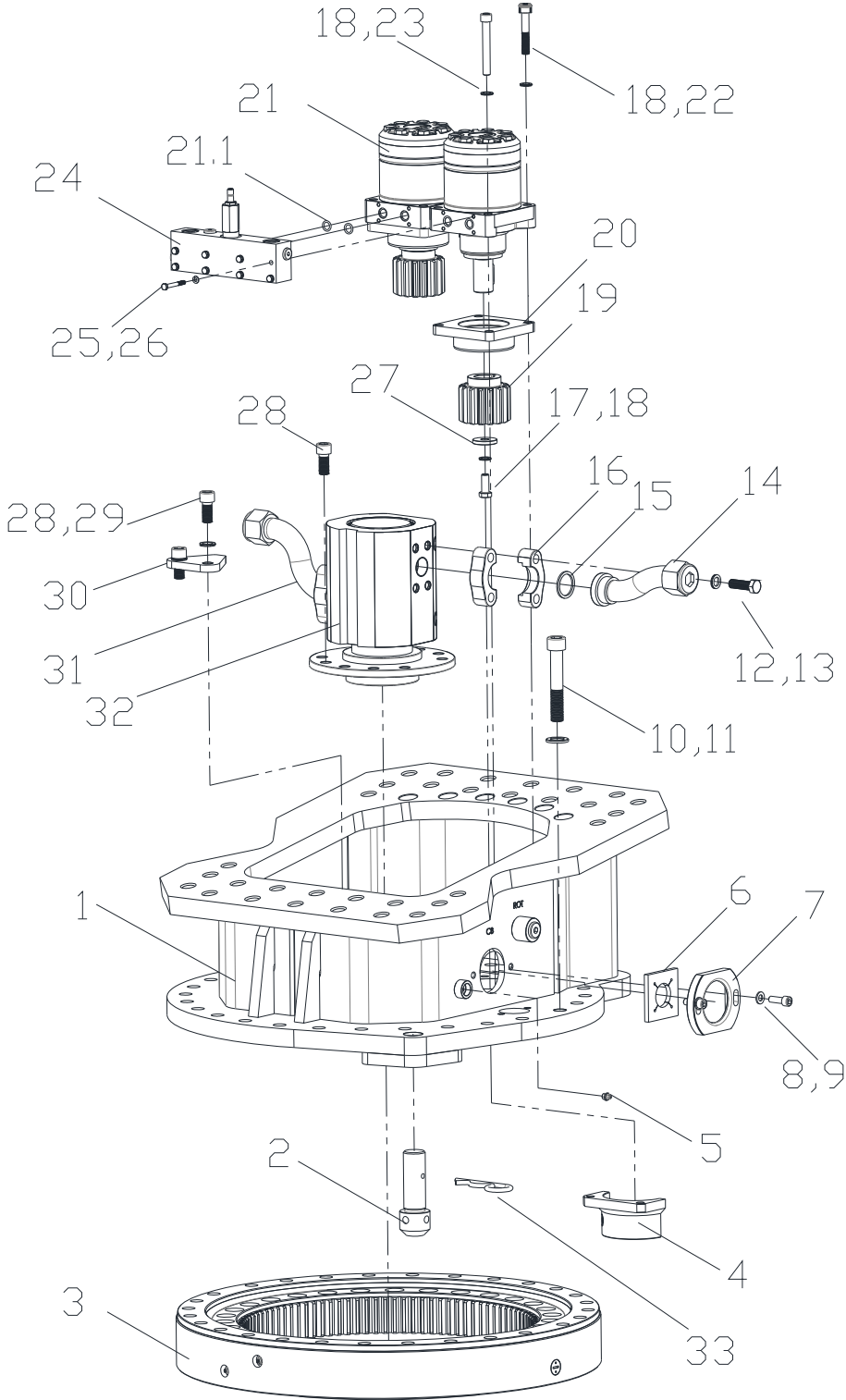


Fig. 4-5 RDC (0933-04.00.A)

4.0 Spare Parts Identification

Table 4.5 RDC25 / RDC32 common parts unless noted

Pos	Part Name	Part No.	Specification	Qty	Note
1	Subhead	PR10161700101A		1	
2	Locking Bolt	PR0933013		1	
3	Bearing Slewing Ring	ZZLA0038		1	
4	Grease housing	PR0933.015		2	
5	Grease fitting	ZZBM72240031180		1	
6	Rubber protection plate	PR0933026		2	
7	Protection Cover	PR0933025		2	
8	Plain washer without chamfer	ZZBM38100100001	M10 DIN 125-1 A	4	
9	Socket Head Bolt	ZZBM07000100030	M10 x 30 mm DIN 912-12.9	4	
10	Peiner High Strength Structural Washer	ZZBM04030200001	M20 DIN 6916	28	
11	Socket Head Bolt	ZZBM07000200110	M20 x 110 mm DIN 912-12.9	28	
12	Hex Head Bolt	ZZBM01010140045	M14 x 45 mm DIN 933-8.8	8	
13	Spring lock washer with square ends	ZZBM37000140001	M14 DIN 127-B	8	
14	Hydraulic Flange L.H.	PR0933022		1	
15	Seal	ZZDS14041002000		2	
16	Split flange	ZZSL9980		4	
17	Hex Head Bolt	ZZBM01010120030	M12 x 30 mm DIN 933-8.8	2	
18	Nord-Lock washer	ZZBM37963120001	NL 12	10	
19	Pinion	PR.0061.014.0	M=5 Z=15	2	
20	Spacer	PR0933014		2	
21	Parker hydraulic motor	ZZHM0899		2	
21.1	O-ring	ZZOR012370262	Ø12.37 x 2.62	4	
22	Socket Head Bolt	ZZBM07000120070	M12 x 70 mm DIN 912-12.9	4	
23	Socket Head Bolt	ZZBM07000120090	M12 x 90 mm DIN 912-12.9	4	
24	Manifold	ZZVBDR500758		1	
25	Spring lock washer with square ends	ZZBM37000060001	M6 DIN 127-B	8	
26	Hex Head Bolt	ZZBM04100006050	M6 x 50 mm DIN 931-10.9	8	
27	Washer for Pinion	PR0062012		2	
28	Socket Head Bolt	ZZBM07060160035	M16 x 35 mm DIN 912-8.8	14	
29	Nord-Lock washer	ZZBM37963160001	NL 16	2	
30	Swivel Locker	PR0933024		1	
31	Hydraulic Flange R.H.	PR0933023		1	
32	Hydraulic Swivel	ZZDD71061		1	
33	Spring Cotter	ZZBM39610080001		1	

Unless otherwise noted, parts are common to both RDC25 and RDC32

4.0 Spare Parts Identification

Unless otherwise noted, figures are common to both RDC25 and RDC32

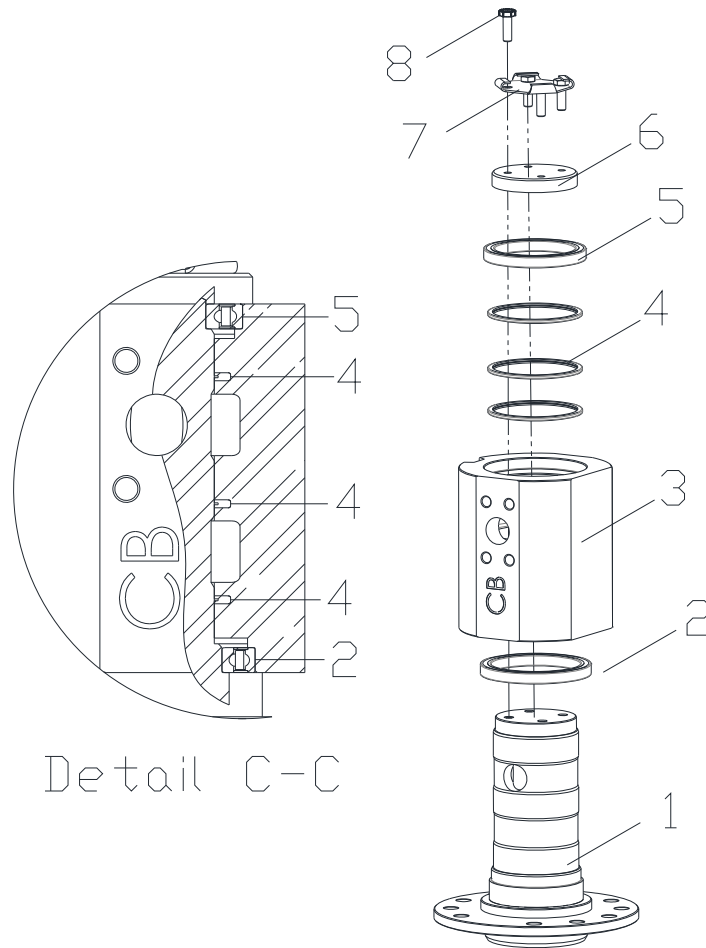


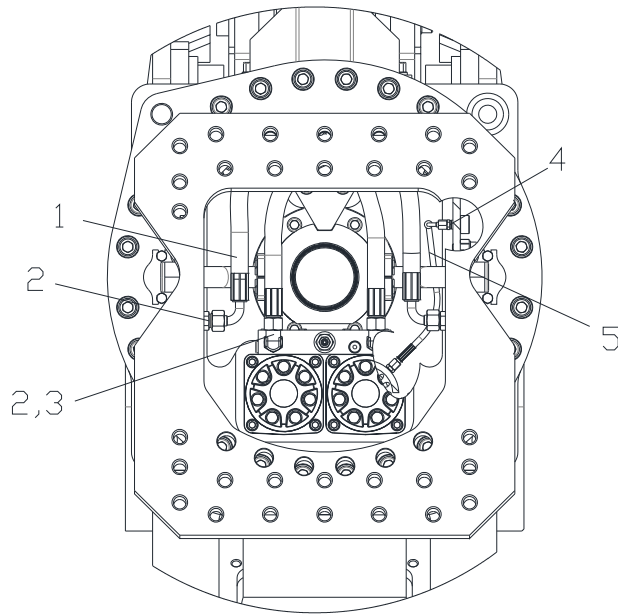
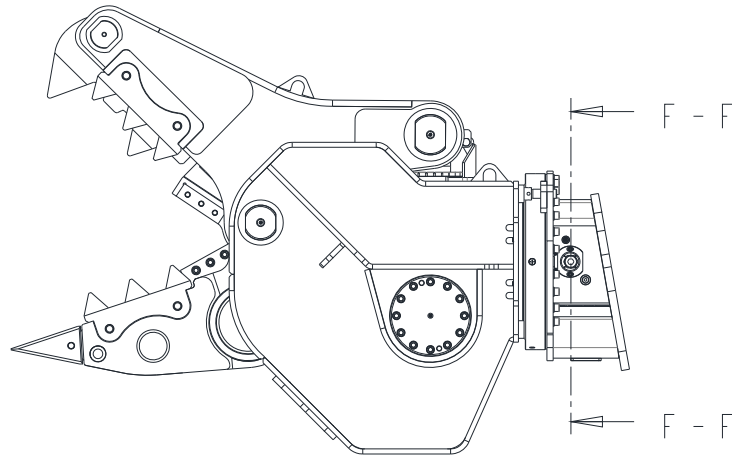
Fig. 4-6 (0933-05.01.0)

Table 4.6 RDC25 / RDC32 common parts unless noted

Pos	Part Name	Part No.	Specification	Qty	Note
1	Stator D2053 RB			1	
2	Deep Groove Ball Bearing	61821-2RS1		1	
3	Housing D2053 RB			1	
4	Seal Kit	ZZ.DSAFDD2053		1	
5	Deep Groove Ball Bearing	61819-2RS1		1	
6	Cover			1	
7	Cover Plate			1	
8	Hexagon head screw	ZZ.BM01010100030	M10 x 30 mm DIN 933-8.8	4	

4.0 Spare Parts Identification

Unless otherwise noted, figures are common to both RDC25 and RDC32



Detail F - F

Fig. 4-7 (0933-07.00.0)

Table 4.7 RDC25 / RDC32 common parts unless noted

<u>Pos</u>	<u>Part Name</u>	<u>Part No.</u>	<u>Specification</u>	<u>Qty</u>	<u>Note</u>
1	Hydraulic hose	ZZSL333		2	
2	Straight male stud fitting	ZZSL5163	GE 16S	4	
3	Adjustable elbow coupling	ZZSL6016	EW 16S	2	
4	Straight male stud fitting	ZZSL5070	GE 6L	2	
5	Hydraulic hose	ZZSL340		1	

4.0 Spare Parts Identification

For use with RDC25.

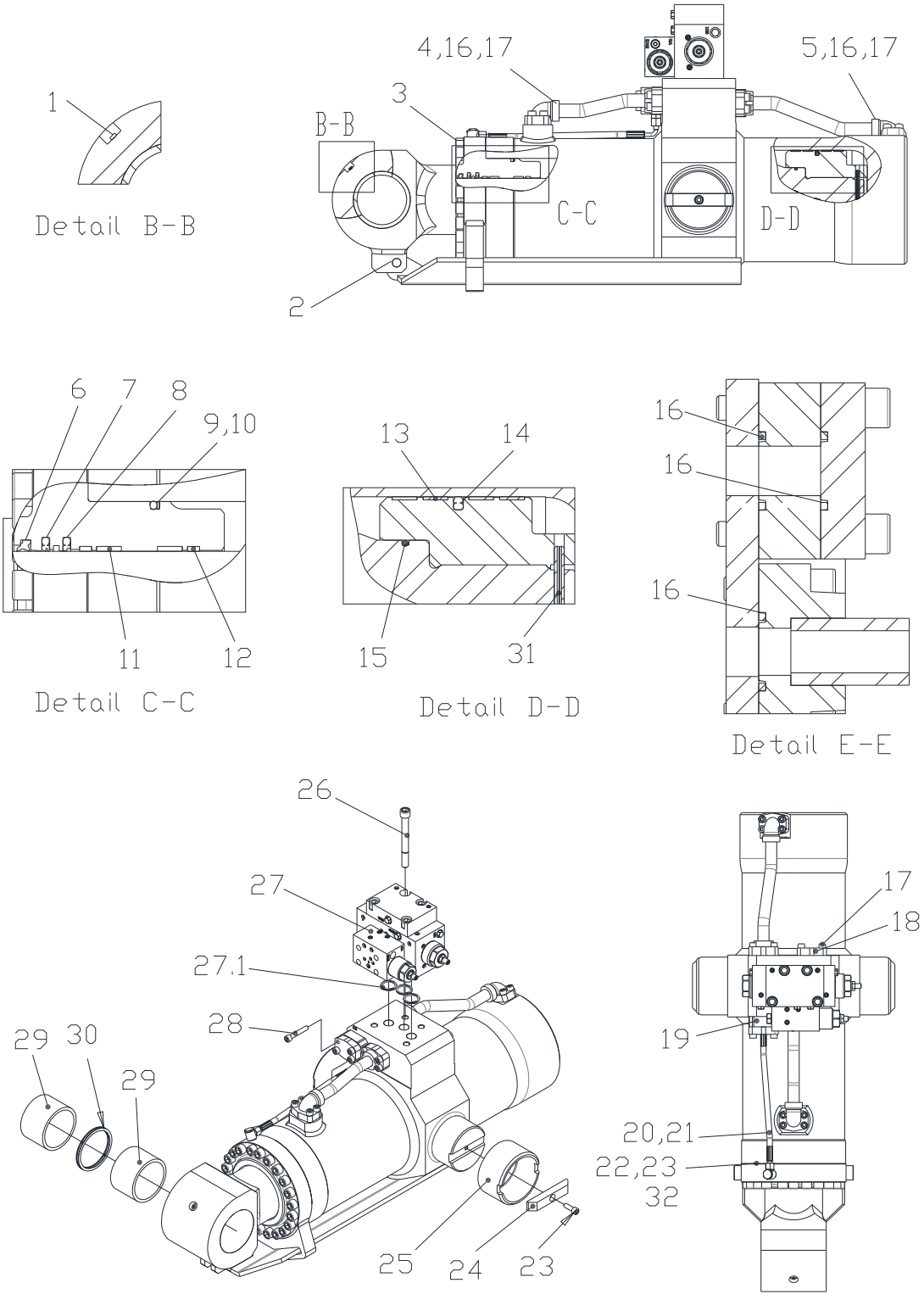


Fig. 4-8 RDC25 (0933-06.00.0) For use with RDC25.

4.0 Spare Parts Identification

Table 4.8 For use with RDC25 only

Pos	Part Name	Part No.	Specification	Qty	Note
1	Grease fitting	ZZBM72240031080		1	
2	Hexagon head screw	ZZBM01010200050	M20 x 50 DIN 933-8.8	1	
3	Socket Head Bolt	ZZBM07000160080	M16 x 80 mm DIN 912-12.9	22	
4	Hydraulic pipe			1	
5	Hydraulic pipe			1	
6	Dirt wiper	ZZDSAFD36013		1	
7	Step seal	ZZDSAFD36013		1	
8	Step seal	ZZDSAFD36013		1	
9	O-Ring	ZZDSAFD36013		1	
10	Back up ring	ZZDSAFD36013		1	
11	Slyd ring	ZZDSAFD36013		2	
12	Slyd ring	ZZDSAFD36013		2	
13	Slyd ring	ZZDSAFD36013		4	
14	Glyd ring	ZZDSAFD36013		1	
15	O-Ring	ZZDSAFD36013		1	
16	SAE HD seal	ZZDS14041001200		7	
17	Socket Head Bolt	ZZBM07000100035	M10 x 35 mm DIN 912-12.9	20	
18	Blind flange		3/4 SAE-6000 PSI	2	
19	Connection flange			1	
20	Hydraulic hose			1	
21	Banjo coupling	ZZSL5406		1	
22	Straight male stud fitting	ZZSL5087		1	
23	Socket Head Bolt	ZZBM07000100030	M10 x 30 mm DIN 912-12.9	2	
24	Locking strip			2	
25	Bush			2	
26	Socket Head Bolt	ZZBM07000160150	M16 x 150 mm DIN 912-12.9	4	
27	Manifold Speed-valve	ZZVB1379143249		1	
27.1	Seal Manifold	ZZDS2799306047		3	
28	Socket Head Bolt	ZZBM07000100060	M10 x 60 mm DIN 912-12.9	4	
29	Bush			2	
30	Securing ring			1	
31	Tension pin			1	
32	Cartridge check valve			1	

Note: Seal kit ZZ.DSAFD36013 only available as a complete set (kit contains pos. 6 up to 15)

Note: Seal kit ZZ.DS2799306047 only available as a complete set (kit contains pos. 27.1)

4.0 Spare Parts Identification

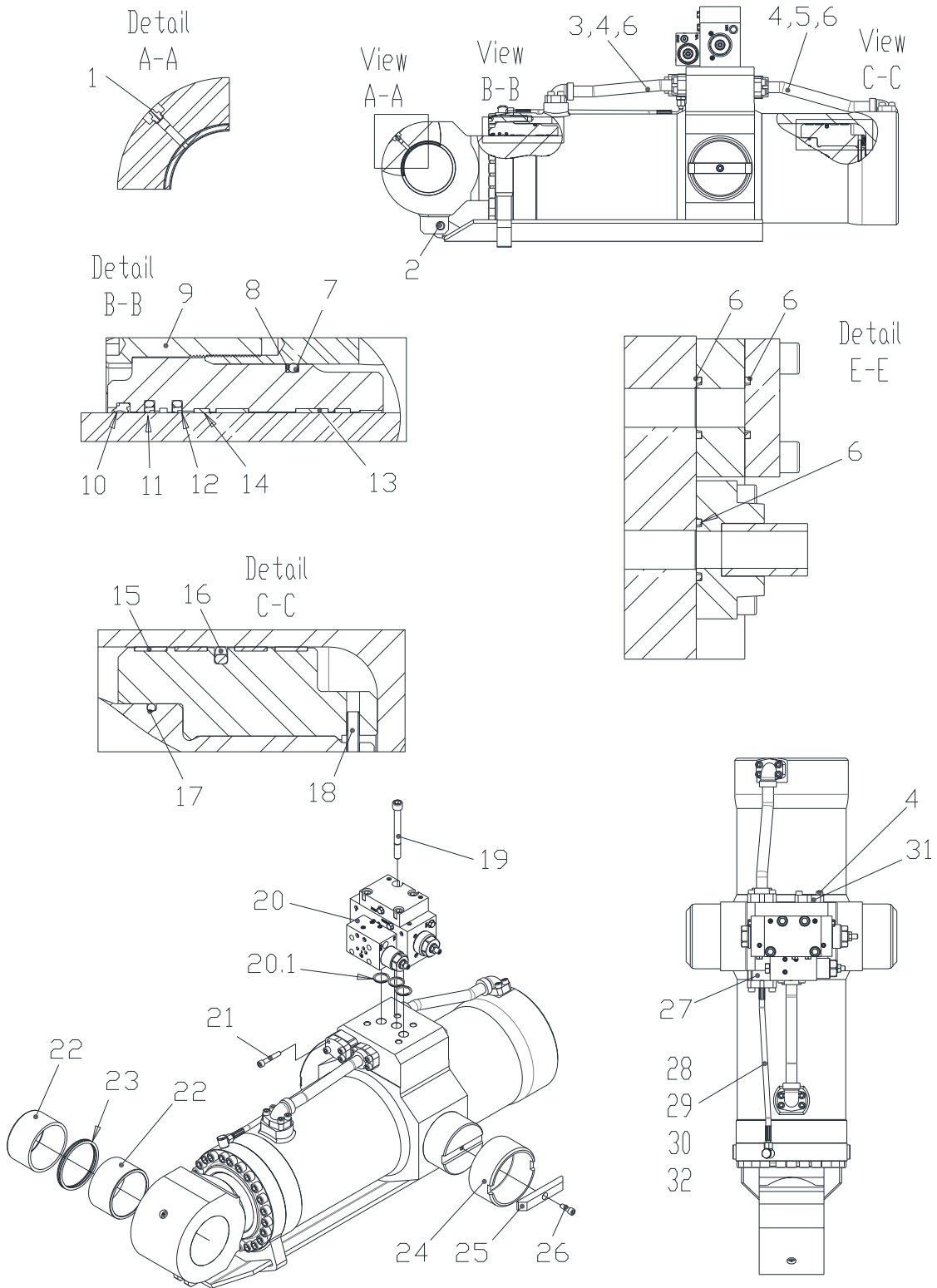


Fig. 4-9 RDC32 (0932-06.01.0) For use with RDC32.

4.0 Spare Parts Identification

Table 4.9 For use with RDC32 only

Pos	Part Name	Part No.	Specification	Qty	Note
1	Grease fitting	ZZBM72240031080		1	
2	Hex Head Bolt	ZZBM01010200050	M20 x 50 DIN 933-8.8	1	
3	Hydraulic pipe			1	
4	Socket Head Bolt	ZZBM07000100035	M10 x 35 mm DIN 912-12.9	20	
5	Hydraulic pipe			1	
6	SAE HD seal	ZZDS14041001200		7	
7	O-Ring	ZZDSAFD36014		1	
8	Back-up ring	ZZDSAFD36014		1	
9	Socket Head Bolt	ZZBM07000160080	M16 x 80 mm DIN 912-12.9	22	
10	Dirt wiper	ZZDSAFD36014		1	
11	Step seal	ZZDSAFD36014		2	
12	Step seal	ZZDSAFD36014		1	
13	Slyd-ring	ZZDSAFD36014		2	
14	Slyd-ring	ZZDSAFD36014		2	
15	Slyd-ring	ZZDSAFD36014		4	
16	Glyd-ring	ZZDSAFD36014		1	
17	O-Ring	ZZDSAFD36014		1	
18	Tension pin			1	
19	Socket Head Bolt	ZZBM07000160150	M16 x 150 mm DIN 912-12.9	4	
20	Manifold Speed-valve	ZZVB1379143249		1	
21	Seal Manifold	ZZDS2799306047		1	
21.1	Socket Head Bolt	ZZBM07000100060	M10 x 60 mm DIN 912-12.9	4	
22	Bush			2	
23	Securing ring			1	
24	Bush			2	
25	Locking strip			2	
26	Socket Head Bolt	ZZBM07000100030	M10 x 30 mm DIN 912-12.9	2	
27	Connection flange			1	
28	Hydraulic hose			1	
29	Banjo coupling	ZZSL5406		1	
30	Straight male stud fitting	ZZSL5087		1	
31	Blind flange		3/4 SAE-6000 PSI	2	
32	Cartridge check valve			1	

Note: Seal kit ZZ.DSAFD36014 available only as a complete set (kit contains pos. 7 and 8 and pos. 10 up to 17)

Note: Seal kit ZZ.DS2799306047 available only as a complete set (kit contains pos. 20.1)

4.0 Spare Parts Identification

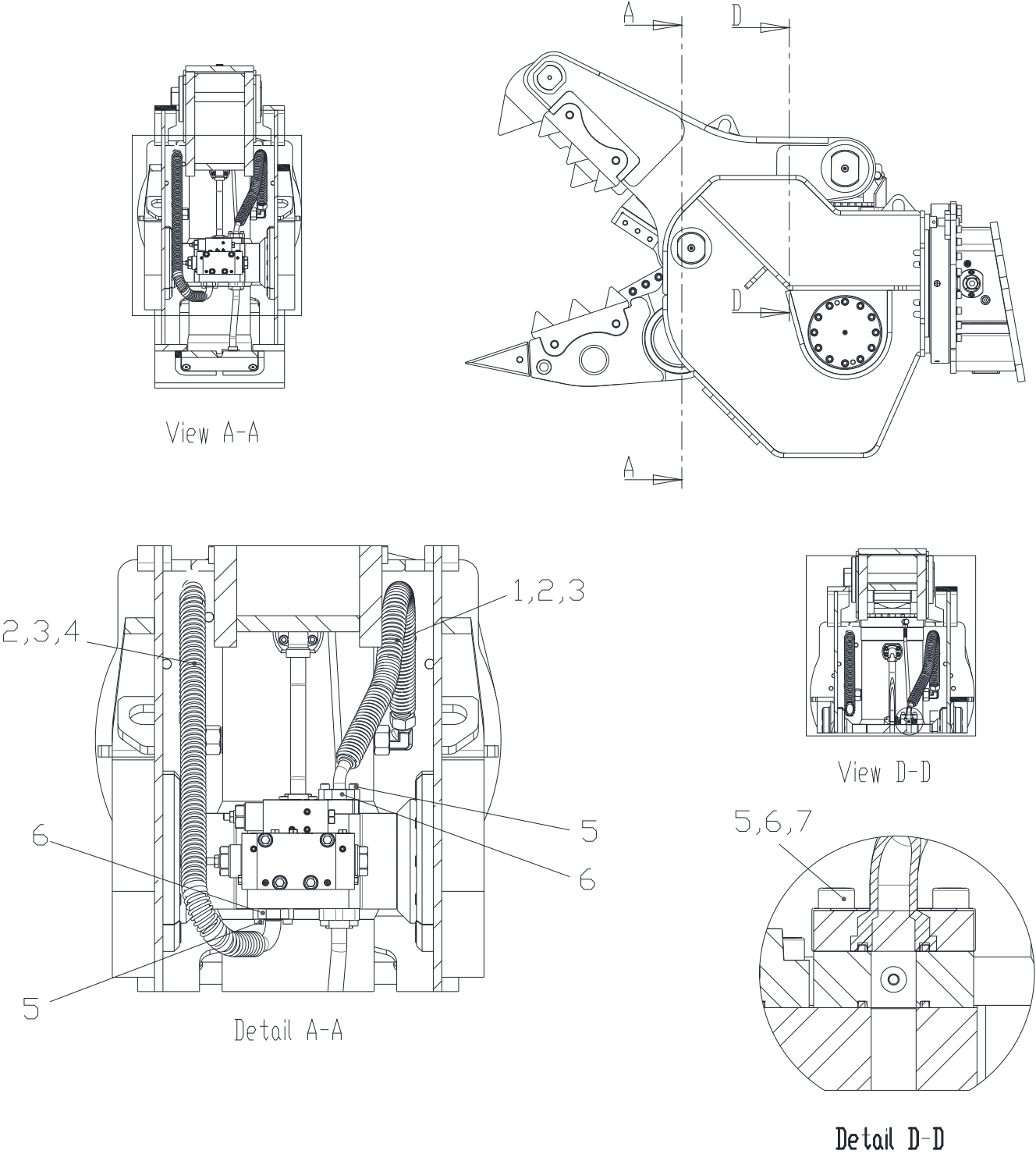


Fig. 4-10 RDC (0933-08.00.A)

4.0 Spare Parts Identification

Table 4.10 RDC25 / RDC32 common parts unless noted

<u>Pos</u>	<u>Part Name</u>	<u>Part No.</u>	<u>Specification</u>	<u>Qty</u>	<u>Note</u>
1	Hydraulic hose (Jaw Close)	ZZSL334		1	
2	Adjustable elbow coupling	ZZSL6025		2	
3	Straight male stud fitting	ZZSL5250		2	
4	Hydraulic hose (Jaw Open)	ZZSL335		1	
5	Socket Head Bolt	ZZBM07000100060	M10 x 60 mm DIN 912-12.9	4	
6	Split flange	ZZSL9970		4	
7	HD seal	ZZDS14041001200		2	
8	Socket Head Bolt	ZZBM07000100035	M10 x 35 mm DIN 912-12.9	4	

5.0 How To Order Spare Parts

Product Demolition Pulverizer
 Model _____
 Serial No. _____

Please provide complete information including the Product, Model and Serial Number when ordering parts. See Section 2.3 Owner's record of the equipment.

Please fill out completely

Line	Part Name	Part Number	Quantity	Price
1				
2				
3				
4				
5				
6				
7				
8				
9				
10				

Your contact information

Your Name _____ Company Name _____
 Phone _____ Account Number _____
 Fax _____ Purchase order _____
 Email _____ Shipping method _____

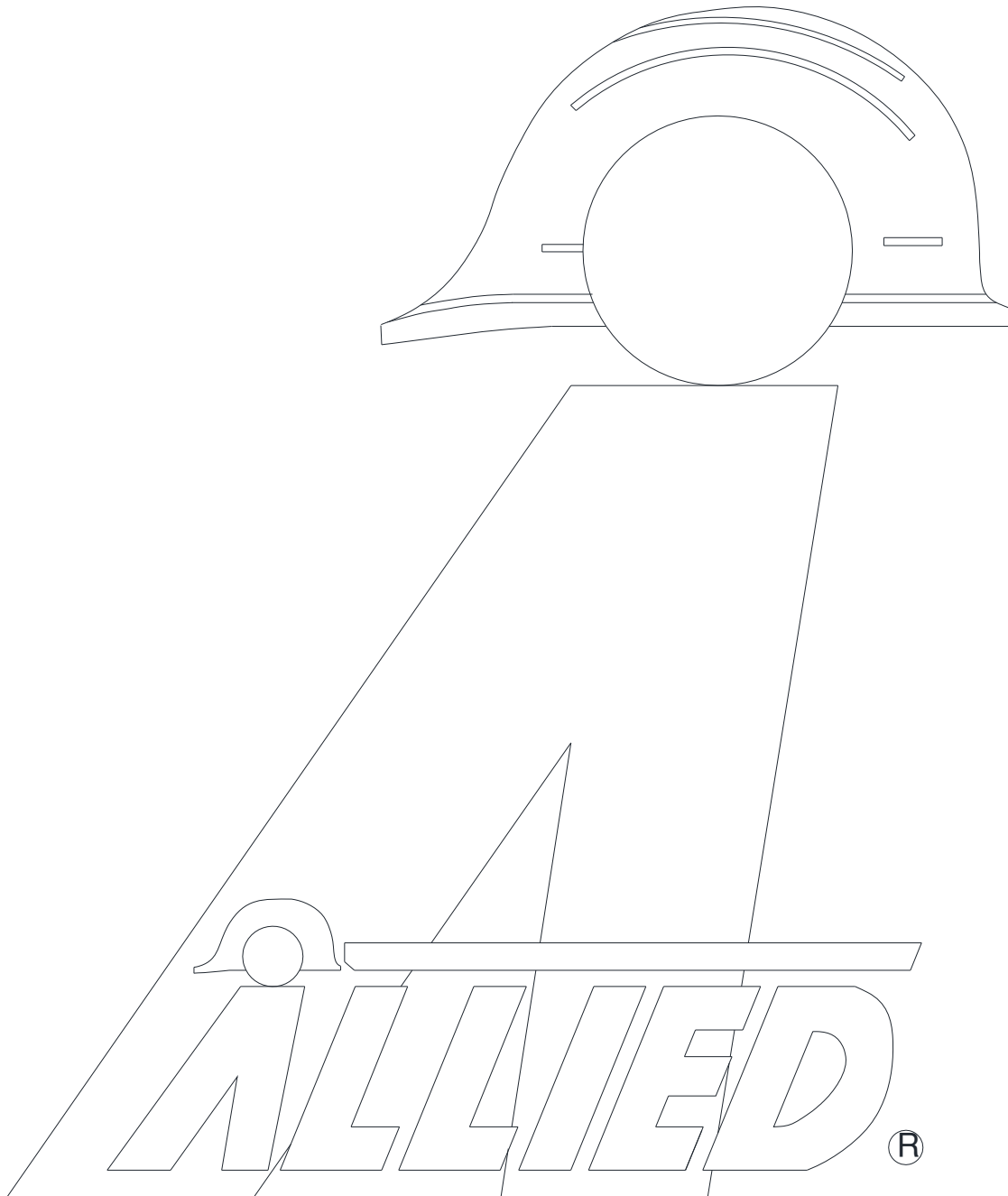
See note*

Billing Address _____ Shipping Address _____

***Note: All backordered parts will be shipped when available via the same method as the original order unless initialed and checked below:**

Initials _____
 Ship complete order only
 Ship available parts and contact customer on disposition of backordered parts
 Other – specify below

Special Instructions



3900 Kelley Avenue, Cleveland, Ohio 44114
Tel: 216-431-2600 Fax: 216-431-2601
e-mail: Sales@AlliedCP.com
website: <http://www.AlliedCP.com>