



Demolition Pulverizer

RDP Series

Model
RDP25
RDP32



Parts Manual – RDP25/32

Keep this manual in a convenient location so that it is easily accessible for future reference. Contact your Allied Dealer or the Allied Customer Service Department for replacement manuals. Inquiries regarding the content of this manual must include effective date shown on inside cover.



Contact Information and Revision History

3900 Kelley Ave

Cleveland, Ohio 44114

Tel: 216-431-2600

www.alliedcp.com

Fax: 216-431-2601

E-mail: sales@alliedcp.com**Revision History for Document No. PM577503**

Continuous improvement of our products is an Allied policy. The material in this publication, including figures, captions, descriptions, remarks and specifications, describe the product at the time of its printing, and may not reflect the product in the future. When changes become necessary, these will be noted in the table below. Specifications are based on published information at the time of publication. Allied Construction Products, LLC, reserves the right to change, edit, delete or modify the content of this document, including descriptions, illustrations and specifications without prior notification. For product or document updates go to www.alliedcp.com.

Table of Revision History for Document PM577503

<u>Effective Date</u>	<u>Page</u>	<u>Summary of Change</u>
15_sep	6	Table 4.1.1 Lower Tooth & Pin Part change begin SN-9260014&UP
15_aug	ii,2,4,6,7	Remove references made to 'RDC'.
15_jan	All	Original issue of PM577503

Table of Contents

Section	Page
Document Revisions.....	i
1.0 Introduction & Scope.....	1
1.1 Purpose of This Manual.....	1
1.2 How To Order Replacement Manuals.....	1
1.3 Related Publications.....	1
2.0 Equipment Identification.....	2
2.1 Serial Number Location.....	2
2.2 Equipment Identification Label.....	2
2.3 Owner's Record of the Equipment.....	2
3.0 Safety, Identification & Information Labels	3
4.0 Spare / Replacement Parts.....	5
4.0 RDP Main Assemblies.....	5
4.0.1 RDP – Scope of Delivery.....	5
4.1 Cutting Blades and Teeth RDP25.....	6
4.1.2 Cutting Blades and Teeth RDP32.....	7
4.2 Upper Jaw, Main Pin Assembly RDP25.....	8
4.2.1 Upper Jaw, Main Pin Assembly RDP32.....	9
4.3 Subhead & Swivel Flange.....	10
4.4 Rotation Assembly.....	11
4.5 Swivel Joint Assembly.....	13
4.6 Regeneration Valve.....	14
4.6.1 Hydraulic Cylinder Assembly – RDP25.....	15
4.6.2 Hydraulic Cylinder Assembly - RDP32.....	17
4.7 Hydraulic Piping Inside Subhead.....	19
4.8 Hydraulic Piping - Cylinder to Swivel Flange	20
5.0 How to Order Spare Parts.....	21

List of Figures	Page
2-1 Equipment Identification.....	2
2-2 Equipment Identification Label.....	2
LA- Label Position & Label Description.....	3
LB – Position of Lubrication Points.....	4

List of Figures	Page
4-0 RDP Main Assemblies.....	5
4-1 Cutter Blades, Teeth – RDP25.....	6
4-1.2 Cutter Blades, Teeth – RDP32.....	7
4-2 Upper Jaw Assembly – RDP25.....	8
4-2.3 Upper Jaw Assembly – RDP32.....	9
4-3 Subhead and Swivel Flange.....	9
4-4 Subhead Assembly.....	11
4-5 Hydraulic Swivel Joint.....	13
4-6 Regeneration Valve.....	14
4-6.1 Hydraulic Cylinder RDP25.....	15
4-6.2 Hydraulic Cylinder RDP32.....	17
4-7 Hydraulic Piping Inside Subhead.....	19
4-8 Hydraulic Piping Cylinder to Swivel Flange	20

List of Tables	Page
1.1 About This Manual.....	1
3.1 Ordering Information For Labels.....	4
3.2 Lubrication Points.....	4
4.0 Main Assemblies.....	6
4.0.1 Scope of Delivery.....	5
4.1 Cutter Blade and Teeth – RDP32.....	6
4.1.2 Cutter Blade and Teeth – RDP25.....	7
4.2.1 Upper Jaw Assembly – RDP25.....	8
4.2.2 Upper Jaw Assembly – RDP32.....	9
4.3 Subhead and Swivel Flange.....	10
4.4 Rotation Assembly.....	12
4.5 Swivel Joint Assembly.....	13
4.6 Regeneration Valve.....	14
4.6.1 Hydraulic Cylinder – RDP25.....	16
4.6.2 Hydraulic Cylinder – RDP32.....	18
4.7 Hydraulic Piping Inside Subhead.....	19
4.8 Hydraulic Piping Cylinder to Swivel Flange	20

1.0 Introduction and Scope

1.1 Purpose of This Manual

Table 1.1 About This Manual



Document ID.	PM577503
Type	Spare / Replacement Parts List
Current Status*	See Inside Cover
Product Name:	Demolition Pulverizer
Series	RDP
Applicable Model[s]:	RDP25, RDP32
Years of Manufacture:	Begin 2014
*Inquiries regarding this manual must include effective date shown on inside cover	

The material presented in this manual has been prepared in support of the product named in Table 1.1. Information is only for use with model(s) identified.

The publication identified in Table 1.1 was created solely for information purposes and should not be considered all-inclusive. If further information is required, contact your local Allied dealer or the Allied Customer Service Department.

Parts Manuals do not include safety precautions or operating procedures. Figures depict views that are intended for parts identification and not for purposes of repair or service of the product. Material presented in this manual, including tables, figures, descriptions and captions, may show equipment that is optional.

How to use this Manual:

The Allied work tool consists of separate components and partial assemblies. Components are identified with the aid of figures, captions, item key, part name and quantity. If needed, 'Notes', 'Remarks' and 'Specifications' will further clarify a part's description or denote assignment with select unit(s) by serial number, model number or both.

An order form is provided at the back of this manual. Prior to ordering parts, confirm that the information recorded on the equipment's identification label corresponds with Table 1.1. For the location of this label, refer to Section 2.0 of this manual.

The content of this document has been reviewed for accuracy. Allied Construction Products, LLC has

endeavored to deliver the highest degree of accuracy and every effort has made to provide information as complete as possible. However, continuous improvement of our products is an Allied policy. The material in this publication, including figures, captions, descriptions, remarks and specifications, describe the product at the time of its printing, and may not reflect the product in the future. A table of revision history for this document is found on the inside cover.

1.2 How To Order Replacement Publications

This manual is an integral part of this product. Keep it in a convenient location so that it is easily accessible for future reference. If replacement manuals are required, they may be ordered by contacting your Allied dealer service center. Manuals may also be viewed and downloaded at: www.alliedcp.com

1.3 Related Publications

Allied Construction Products, LLC offers the following publications for the product identified in Table 1.1.

1.3.1 Safety, Operation & Maintenance Manual

SOM577505

Applicable Models: RDP25, RDP32

The Safety, Operation and Maintenance Manual has been prepared to assist the operator and maintenance personnel with the information necessary for the safe and proper use of the Allied work tool.

Content in the Safety, Operation & Maintenance Manual includes:

Safety Information
 Equipment Serial Number and Model Identification
 Technical Data (Weight & General Dimensions)
 Basic Guidelines for Installation and Set-up
 Pre-Operation Inspection
 How to Operate the Allied Work Tool
 Maintenance Schedule
 Troubleshooting
 Removal From Carrier, Transporting, Lifting & Storage
 Technical Data (Weight & General Dimensions)

Repair Manual 577500

Content includes Jaw Maintenance and Repair.
 Applicable Models: RDP25, RDP32

2.0 Equipment Identification

2.1 Equipment Identification

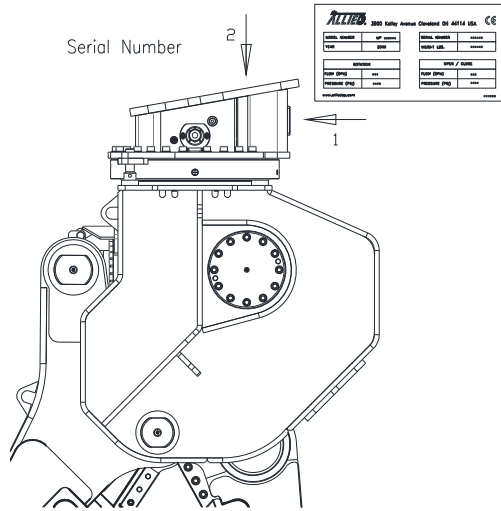


Fig 2-1 Serial Number Location

Refer to Fig. 2-1. The Serial Number assigned to the Allied equipment is located on the Equipment Identification Label. A duplicate label is located inside the subhead.

2.2 Equipment Identification / Information Tag

ALLIED 3900 Kelley Avenue Cleveland OH 44114 USA			
MODEL NUMBER	RDC25R	SERIAL NUMBER	000
YEAR	2014	WEIGHT LBS.	000
ROTATION		OPEN / CLOSE	
FLOW (GPM)	000	FLOW (GPM)	000
PRESSURE (PSI)	000	PRESSURE (PSI)	000
1-800-321-1046		www.alliedcp.com pn-xxxxxx	

Fig 2-2 Equipment Identification Label

The Equipment Identification Label is affixed to the subhead. It provides the following information:

- Allied Name and Address
- Model number
- Serial number
- Year of manufacture
- Weight
- Rotation – Flow / Pressure
- Jaw – Flow / Pressure

Confirm that the information contained on the Label corresponds with the information provided in Section 1, Table 1.1.

2.3 Owner's Record of the Equipment

Your local Allied dealer requires complete information about the equipment to better assist you with questions regarding parts, warranty, operation, maintenance, or repair.

- Record the equipment's serial number to the space provided below. This information may be obtained from the Equipment Identification Tag. Refer to Fig 2-1 for the location of the tag.
- Indicate the date in which the Allied equipment was placed into service.
- Indicate the date in which the Warranty Registration form was completed and returned to Allied.

Product Name: Demolition Pulverizer

Series: RDP

Model / Part No. RDP25 / 577172

Model / Part No. RDP32 / 577174

Serial Number: _____

In Service Date: _____

Registration Date: _____

Model RDP25 / RDP32

R	Rotation
D	Demolition
P	Pulverizer
25	Carrier Weight (t-metric)

3.0 Safety, Identification and Information Labels

3.1 Safety, Identification and Information Labels

Information labels affixed to the Allied equipment include safety warnings, identification and instructions important to operation and service.

Words and illustrations must be readable. Keep all safety labels clean. Replace damaged or missing labels before operating this equipment. Refer to Table 3.2 for ordering information. Refer to Figures "L-A" and "L-B" for their position on the equipment.

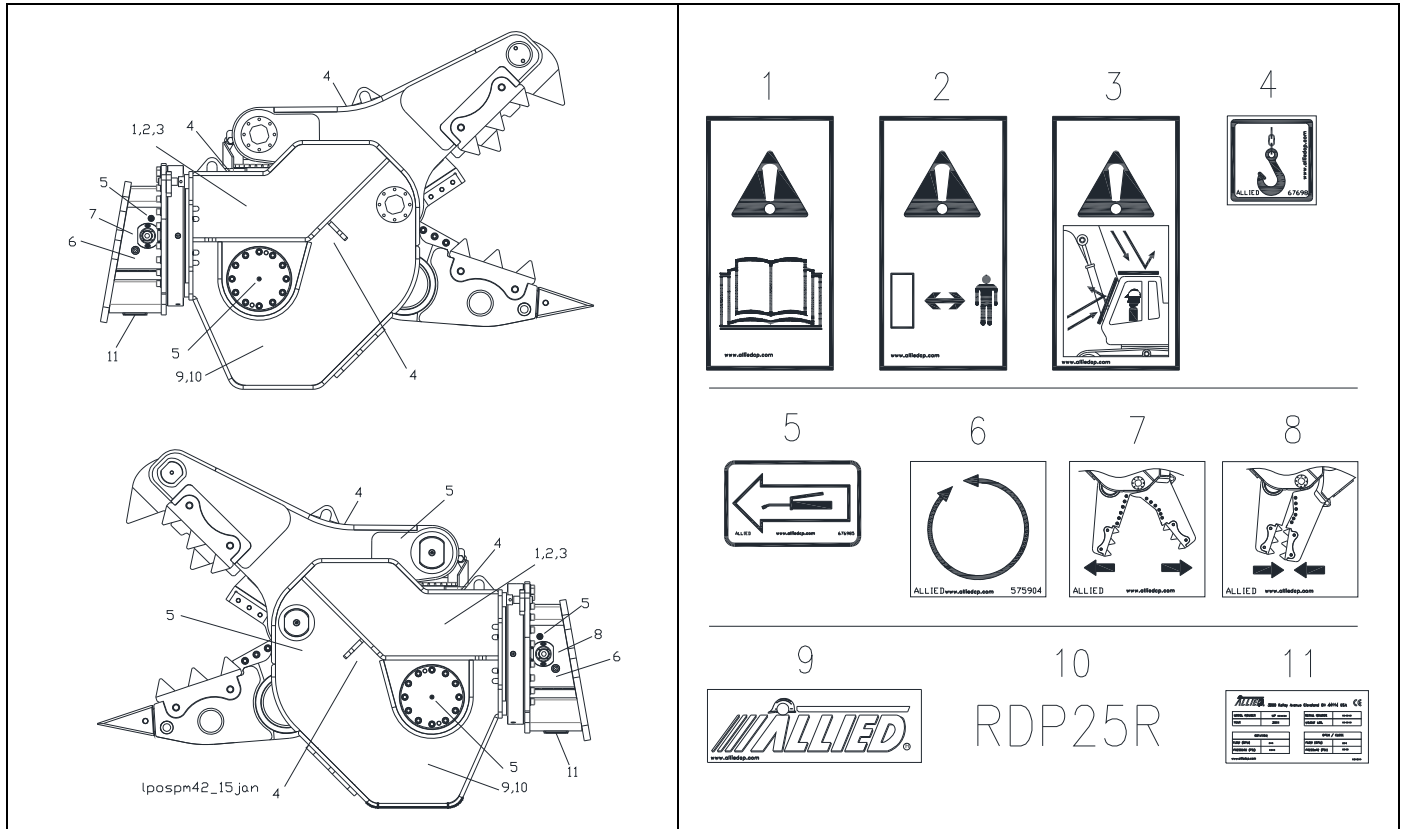


Fig. L-A Label Position – RDP

1. Safety Alert Symbol / Read the Manual - Directs personnel to the manual for safety-related precautions and further instructions regarding operation and maintenance procedures.

2. Stay Clear – Alerts personnel and by-standers to maintain a safe distance from the work tool during operation.

3. Flying Debris Hazard – Alerts of the need for a protective guard to shield the operator from debris generated when the work tool is in operation.

4. Lift Point – Marks lift points for safe handling of the work tool.

5. Lubrication Point – Pictogram of manual and grease gun mark the locations lubrication points. Refer to the manual(s) for application instructions, grease type and re-lubrication schedule.

6. Rotation – Marks the location of hydraulic connection port for motor rotation. Pictogram indicates rotation is bi-directional 360°.

7 & 8. OPEN & CLOSE – Pictograms identify action of jaw when hydraulic port OPEN or CLOSED is pressurized. Arrows indicate direction of jaws.

9. Company Logo – The Allied brand identifier and is a registered trademark of Allied Construction Products, LLC.

10. Model Identification – Identifies the Model of the Allied Mobile Shear

11. Equipment ID - Contains identifying information about the equipment, including: Product name, model number, serial number, company name and address.

3.0 Safety, Identification and Information Labels

Labels are common to both RDP25 and RDP32 except where note

Table 3.1 Safety, Identification & Information Labels

Pos	Part Name	Part No.	Description	Type	Qty	Note
---	Label Set	577501	RDP25/32 Includes Pos 1-9	---	1	
1	Label	676984	Pictogram, Read Instructions	Safety	2	2
2	Label	840156	Pictogram, Stay Clear	Safety	2	2
3	Label	575948	Pictogram, Guards Installed	Safety	2	2
4	Label	676982	Pictogram, Lift Point	Safety	3	
5	Label	676985	Pictogram, Lube Point	Info	10	
6	Label	575904	Pictogram, Rotation-Bi-directional 360°	Info	2	2
7	Label	577433	(CR) Cylinder Rod => Jaw Open	Info	1	
8	Label	577432	(CB) Cylinder Barrel => Jaw Close	Info	1	
9	Label	676656	Allied Logo	ID	2	2
10.1	Label	577509	Model RDP25	ID	2	1, 2
10.2		577508	Model RDP32	ID		
11	Label	577338	Equipment Identification	ID	1	1

1: Not Included in Label Set

2: Apply label to LH & RH side.

Cylinder Barrel (CB) => Jaw Close, Cylinder Rod (CR) => Jaw Open

Table 3.2 Lubrication Points

Pos	Part Name	Qty
A	Main Pin	1
B	Cylinder Pin (rod eye)	1
C	Cylinder Pin (trunnion)	2
D	Main Cylinder Pin	1
E	Gear, slewing ring	1
F	Bearing, slewing ring	4

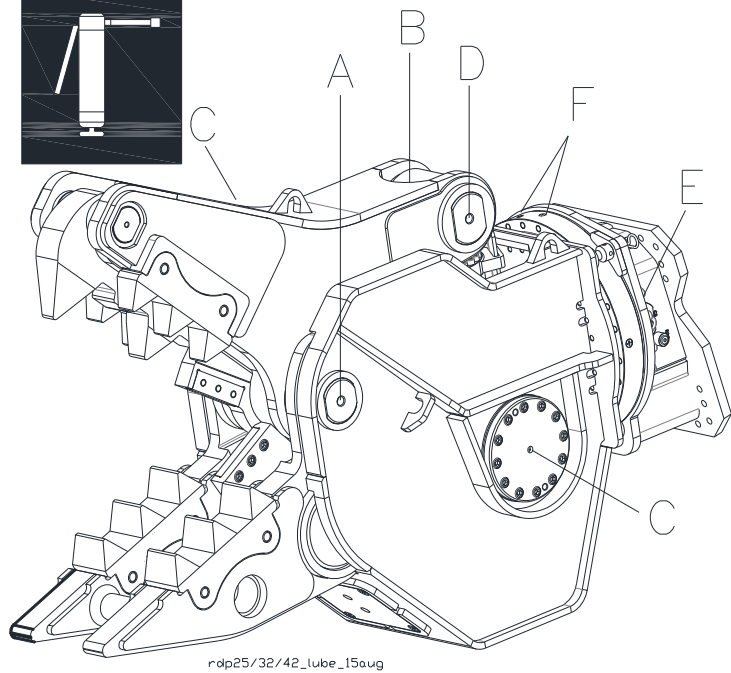
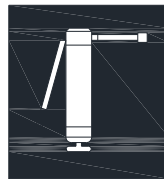
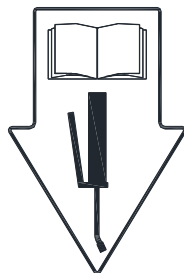


Fig. L-B RDP Lubrication Points Identified



4.0 Spare Parts

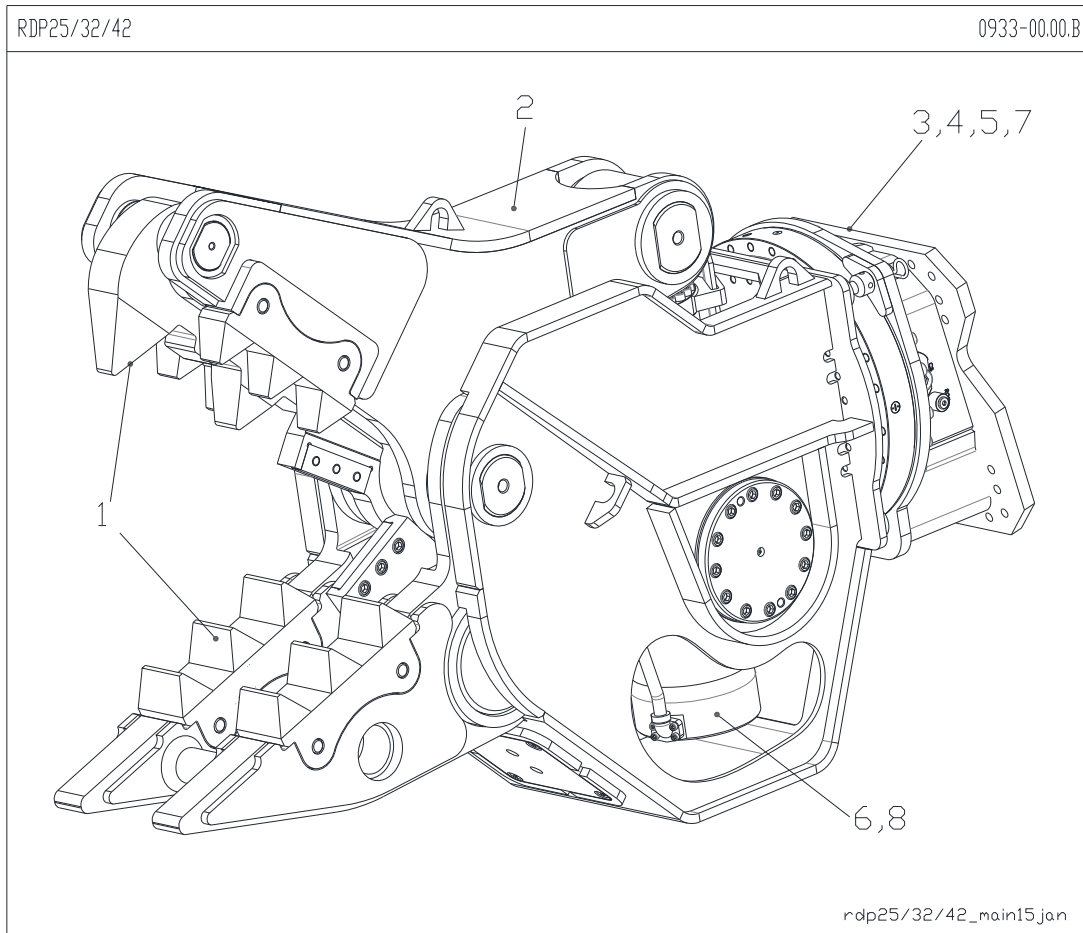


Fig. 4-0 Main Assemblies RDP

Table 4.0 Main Assemblies

<u>Pos</u>	<u>Name</u>	<u>Section</u>
1	Cutter Blades, Teeth	4.1
2	Jaw - Upper	4.2
3	Subhead	4.3
4	Rotation Assembly	4.4
5	Hydraulic Swivel	4.5
6	Hydraulic Cylinder	4.6
7	Hydraulic Circuit - Rotation	4.7
8	Hydraulic Circuit - Cylinder	4.8

Table 4.0.1 Scope of Delivery

RDP25 Part Number 577172* (Standard)

RDP32 Part Number 577174* (Standard)

***Standard Units Delivered Complete With:**

- ✓ Assembled, tested, painted & decaled
- ✓ Safety, Operation & Maintenance Manual
- ✓ Parts Manual
- ✓ Bolt Set (Used to fasten Mounting Bracket)

Items Not Included – Order separately

Hose-Jaw OPEN (CR) Hose-Jaw CLOSE (CB)
 Hose- Rotation (CW) Hose - Rotation (CCW)
 Mounting Bracket

Cylinder Barrel (CB) => Jaw Close, Cylinder Rod (CR) => Jaw Open

4.1 Spare Parts Exclusive to RDP25 Only

Figures and parts lists are common to both RDP25 and RDP32 except where noted

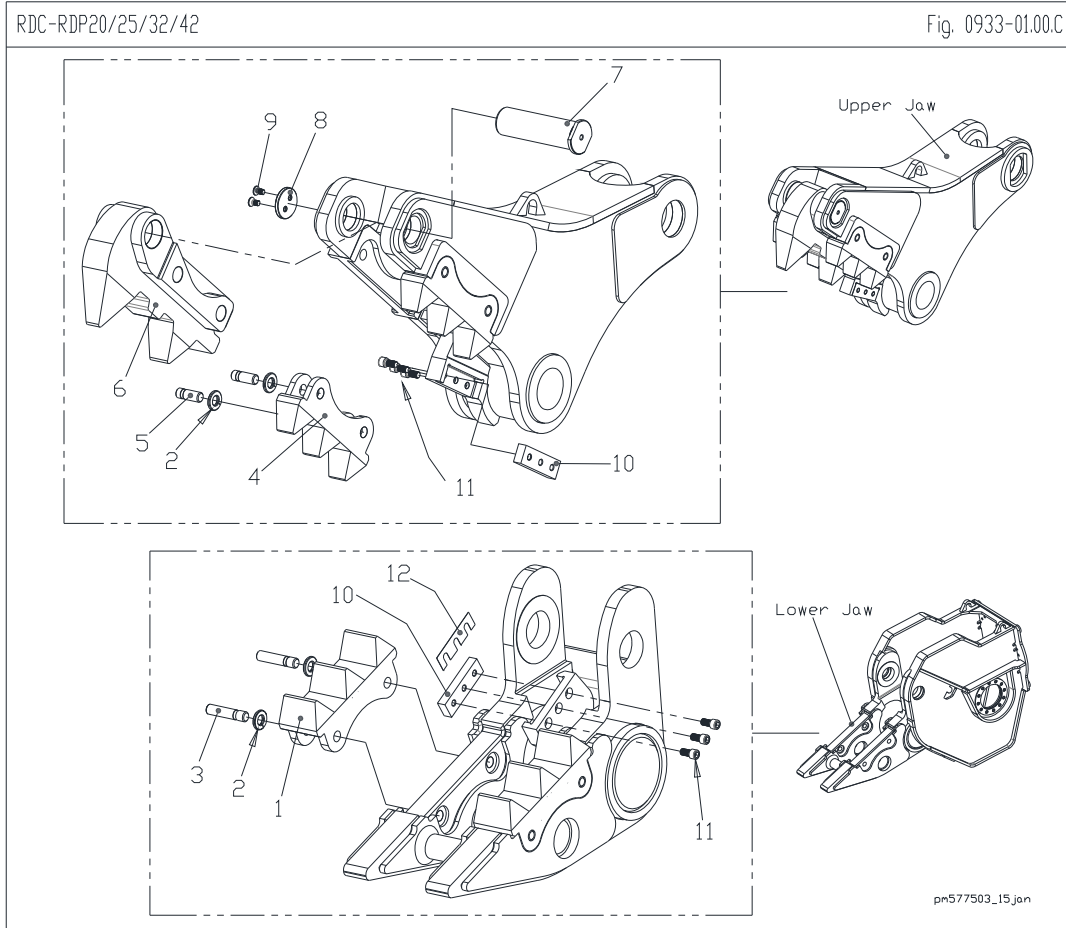


Fig. 4-1 RDP25 (0933-01.00.C)

Table 4.1.1 Parts List Exclusive to RDP25 Only

Pos	Part Name	Part No.	Specification	Qty	Note
1.1	Tooth	PR0933020	SN-926007-926013	2	1
1.2		PR0921001	Begin SN-9260014&UP		
2	Retaining Ring	SPEAN10242		8	
3.1	Pin	PR0933021	SN-926007-926013	4	1, 25
3.2		PR0921011	Begin SN-9260014&UP		
4	Tooth	PR0925001		2	
5	Pin	PR09250050		4	
6	Center Tooth	PR09260140		1	25
7	Front pin	PR09260120		1	25
8	Washer	PR09260130		1	
9	Countersunk screw	ZZBM07400160030	M16 x 30 mm DIN 7991-10.9	2	
10	Blade 30x60x200	PR09330190		2	
11	SH Bolt	ZZBM07000200040	M20 x 40 mm DIN 912-12.9	6	
12	Blade shim set	PR09330270		1	

Note 1. Pay attention to serial number

Note 25. Use is exclusive to RDP25.

4.1.2 Spare Parts Exclusive to RDP32 Only

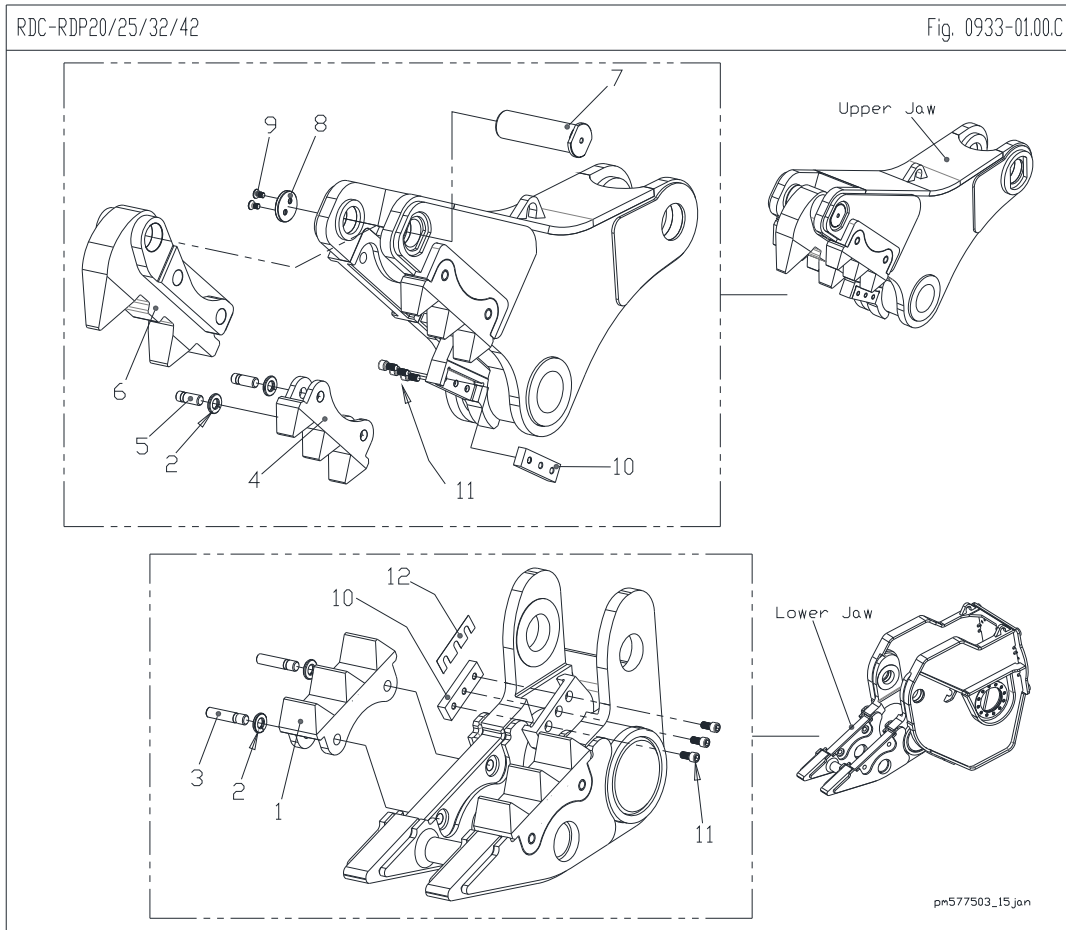


Fig. 4-1.2 RDP32 (0933-01.00.C)

Table 4.1.2 Parts List Exclusive to RDP32 Only

Pos	Part Name	Part No.	Specification	Qty	Note
1	Tooth	PR0933020		2	
2	Retaining Ring	SPEAN10242		8	
3	Pin	PR09330210		4	32
4	Tooth	PR09250010		2	
5	Pin	PR09250050		4	
6	Center Tooth	PR09330340		1	32
7	Front pin	PR09330350		1	32
8	Washer	PR09260130		1	
9	Countersunk screw	ZZBM07400160030	M16 x 30 mm DIN 7991-10.9	2	
10	Blade 30x60x200	PR09330190		2	
11	SH Bolt	ZZBM07000200040	M20 x 40 mm DIN 912-12.9	6	
12	Blade shim set	PR09330270		1	

Note 32. Use is exclusive to RDP32.

4.2 Spare Parts Exclusive to RDP25 Only

RDP25/32

0933-02.00.C

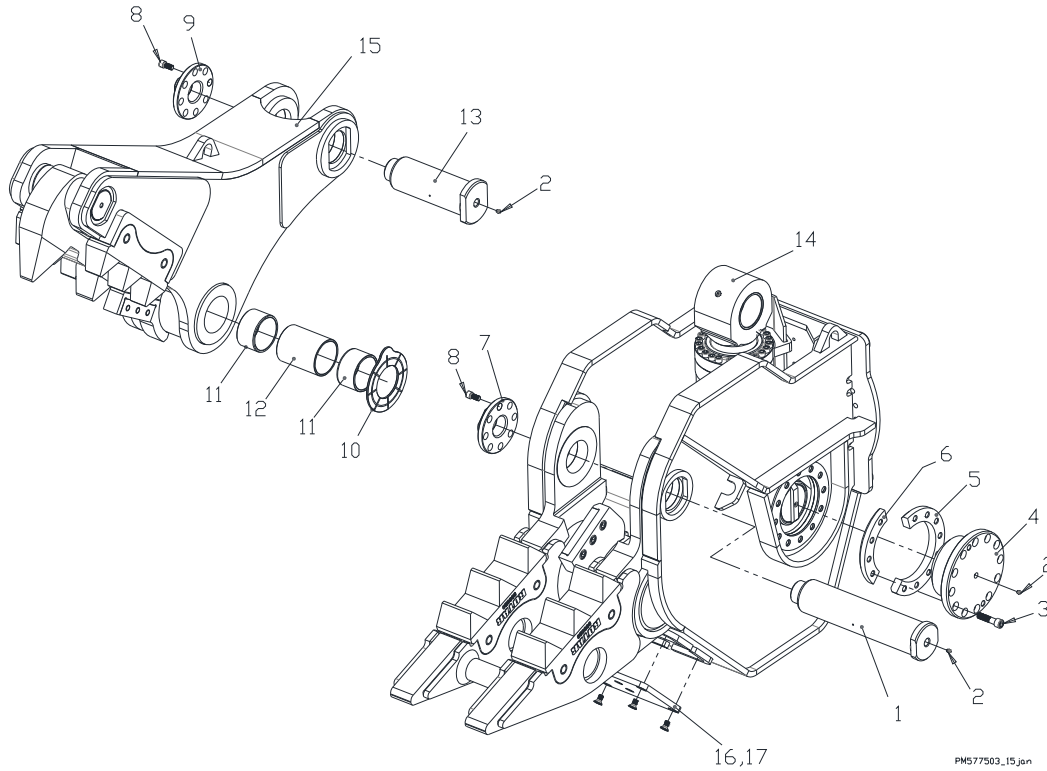


Fig. 4-2 RDP25 (0933-02.00.C)

Table 4.2.1 Parts List Exclusive to RDP25 Only.

Pos	Part Name	Part No.	Specification	Qty	Note
1	Main pin	PR09260010		1	25
2	Grease fitting	ZZBM72240031180	G1/8"	4	
3	SH Bolt	ZZBM07000200080	M20 x 80 DIN 912-12.9	24	
4	Outer cylinder retainer	09260050		2	25
5	Inner cylinder retainer big	09260060		2	25
6	Inner cylinder retainer small	09260070		2	25
7	Nut	PR09330030	M80x4	1	
8	Hex Bolt	ZZBM07060016035	M16 x 35 DIN 912-8.8	2	
9	Nut	PR09260030	M60x4	1	25
10	Main pivot shim	PR09330040		2	25
11	Wear bush	ZZLA12013575		2	
12	Spacer	PR09260080		1	25
13	Main cylinder Pin	PR09260040		1	25
14	Hydraulic cylinder	ZZCLGH1364		1	25
15	Upper jaw	PR0926500B		1	25
16	Cover	PR09330100		1	
17	Countersunk screw	ZZBM07400016030	M16 x 30 DIN 7991-10.9	4	

4.2.2 Spare Parts Exclusive to RDP32 Only

RDP25/32

0933-02.00.C

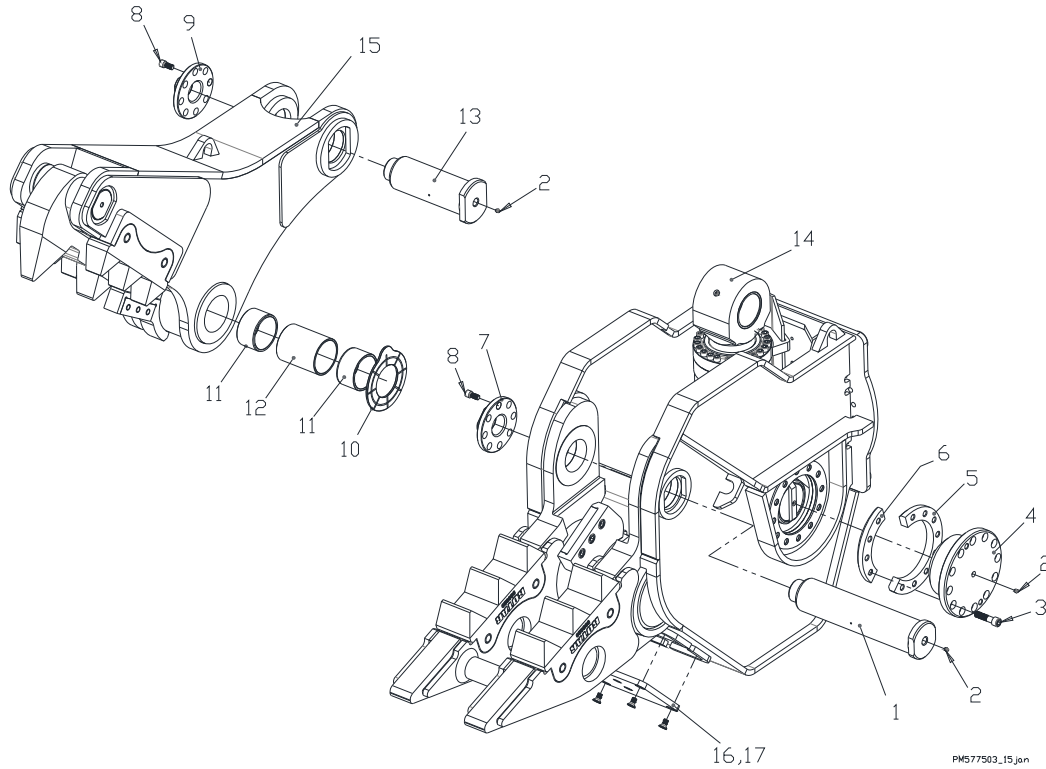


Fig. 4-2.1 RDP32 (0933-02.00.C)

Table 4.2.2 Parts List Exclusive to RDP32 Only.

Pos	Part Name	Part No.	Specification	Qty	Note
1	Main pin	PR09330020		1	32
2	Grease fitting	ZZBM72240031180	G1/8"	4	
3	SH Bolt	ZZBM07000200080	M20 x 80 DIN 912-12.9	24	
4	Outer cylinder retainer	PR09330070		2	32
5	Inner cylinder retainer big	PR09330080		2	32
6	Inner cylinder retainer small	PR09330090		2	32
7	Nut	PR09330030	M80x4	2	32
8	Hex Bolt	ZZBM07060016035	M16 x 35 DIN 912-8.8	2	
9	Nut	PR09330030	M80x4	2	32
10	Main pivot shim	PR09330040		2	32
11	Wear bush	ZZLA12013575		2	
12	Spacer	PR09330180		1	32
13	Main cylinder pin	PR09330060		1	32
14	Hydraulic cylinder	ZZCLGH1365		1	32
15	Upper jaw	PR0933500A		1	32
16	Cover	PR09330100		1	
17	Countersunk screw	ZZBM07400016030	M16 x 30 DIN 7991-10.9	4	

4.3 Spare Parts

Figures and parts lists are common to both RDP25 and RDP32 except where noted

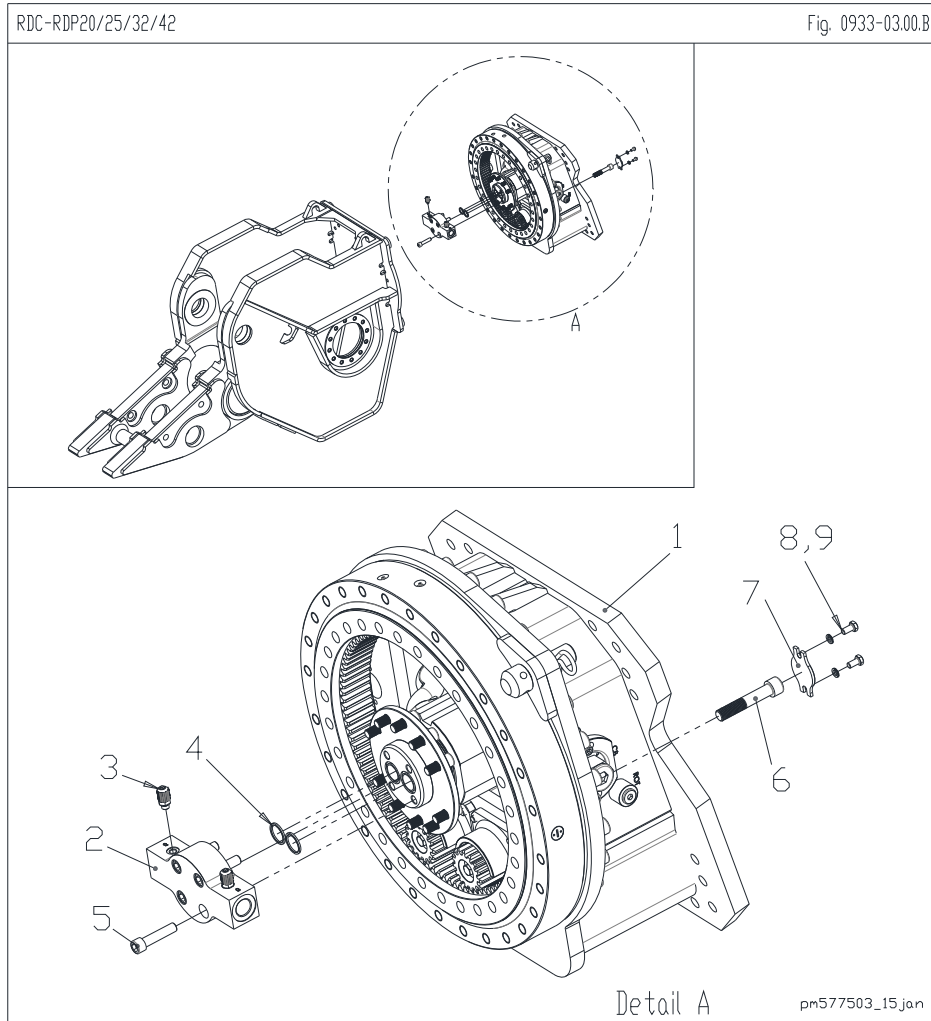


Fig. 4-3 RDP25/32 (0933-03.00.B)

Table 4.3 RDP25 / 32

Pos	Part Name	Part No.	Specification	Qty	Note
1	Subhead	PR0933100A		1	
2	Swivel Flange	PR09330170		1	
3	Test Adapter	ZZSL4150	Minimess G1/4"	2	
4	O-Ring	ZZDS14041001600		2	
5	Socket head bolt	ZZBM07000160070	M16 x 70 DIN 912-12.9	4	
6	Socket head bolt	ZZBM07000200110	M20 x 110 DIN 912-12.9	30	
7	Cover	PR00611120		2	
8	Hex head bolt	ZZBM01010100020	M10 x 20 DIN 933-8.8	4	
9	NORD-LOCK Washer	ZZBM37963100001	NL 10	4	

4.4 Spare Parts

Figures and parts lists are common to both RDP25 and RDP32 except where noted

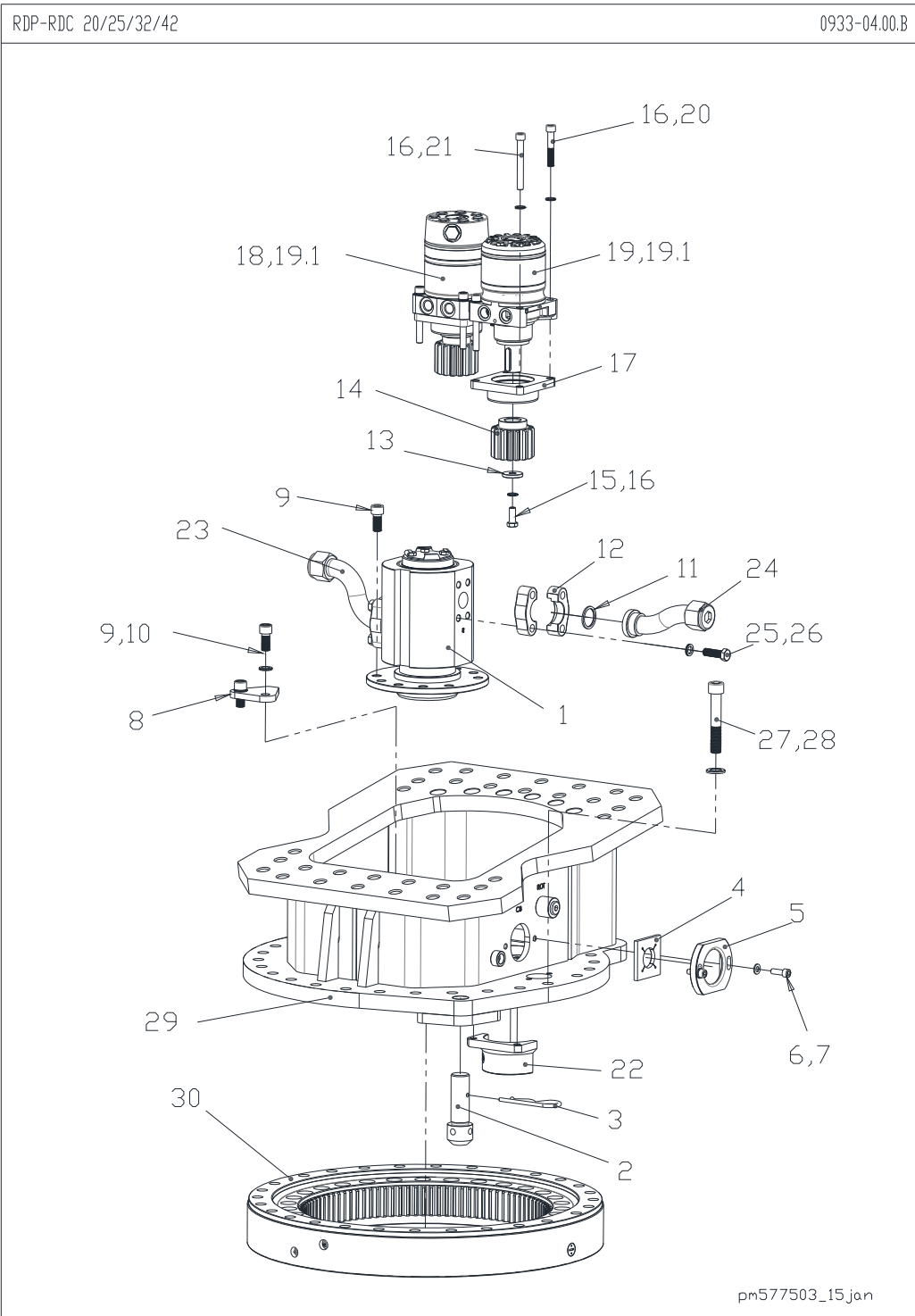


Fig. 4-4 RDP25/32 (0933-04.00.A)

4.4 Spare Parts

Parts are common to both RDP25 and RDP32 except where noted

Table 4.4 RDP25 / 32

<u>Pos</u>	<u>Part Name</u>	<u>Part No.</u>	<u>Specification</u>	<u>Qty</u>	<u>Note</u>
1	Swivel	ZZDD71061		1	
2	Locking bolt	PR09330130		1	
3	Spring cotter	ZZBM39610080001		1	
4	Rubber protection plate	PR09330260		2	
5	Protection cover	PR09330250		2	
6	Socket head bolt	ZZBM07000100030	M10 x 30 DIN 912-12.9	4	
7	Flat washer	ZZBM38100100001	M10 DIN 125-1A	4	
8	Swivel Locker	PR09330240		1	
9	Socket head bolt	ZZBM07060160035	M16 x 35 DIN 912-8.8	12	
10	NORD-LOCK washer	ZZBM37963160001	NL 16	2	
11	O-Ring	ZZDS14041002000		2	
12	Split flange	ZZSL9980	SAE 1.25" - 6000 PSI	4	
13	Washer	PR00620120		2	
14	Pinion	PR00610140		2	
15	Hex head bolt	ZZBM01010120030	M12 x 30 DIN 933-8.8	2	
16	NORD-LOCK washer	ZZBM37963120001	NL 12	10	
17	Spacer	PR09330140		2	
18	Parker hydraulic motor	ZZHM0900	Crossover relief valve	1	
19	Parker hydraulic motor	ZZHM08995		1	
19.1	Seal kit hydraulic motor	ZZDS0900		2	
20	Socket head bolt	ZZBM07000120070	M12 x 70 DIN 912-12.9	4	
21	Socket head bolt	ZZBM07000120100	M12 x 100 DIN 912-12.9	4	
22	Grease housing	PR09330150		2	
23	Swivel Flange RH	PR09330230	SAE 1.25"	1	
24	Swivel Flange LH	PR09330240	SAE 1.25"	1	
25	Hex head bolt	ZZBM01010140045	M14 x 45 DIN 933-8.8	8	
26	NORD-LOCK washer	ZZBM37963140001	NL 14	8	
27	Socket head bolt	ZZBM07000200120	M20 x 120 DIN 912-12.9	28	
28	Peiner washer	ZZBM04030200001	M20 DIN 6916	28	
29	Subhead	PR0933100A		1	
30	Bearing slewing ring	ZZLA0038		1	

4.5 Spare Parts

Figures and parts lists are common to both RDP25 and RDP32 except where noted

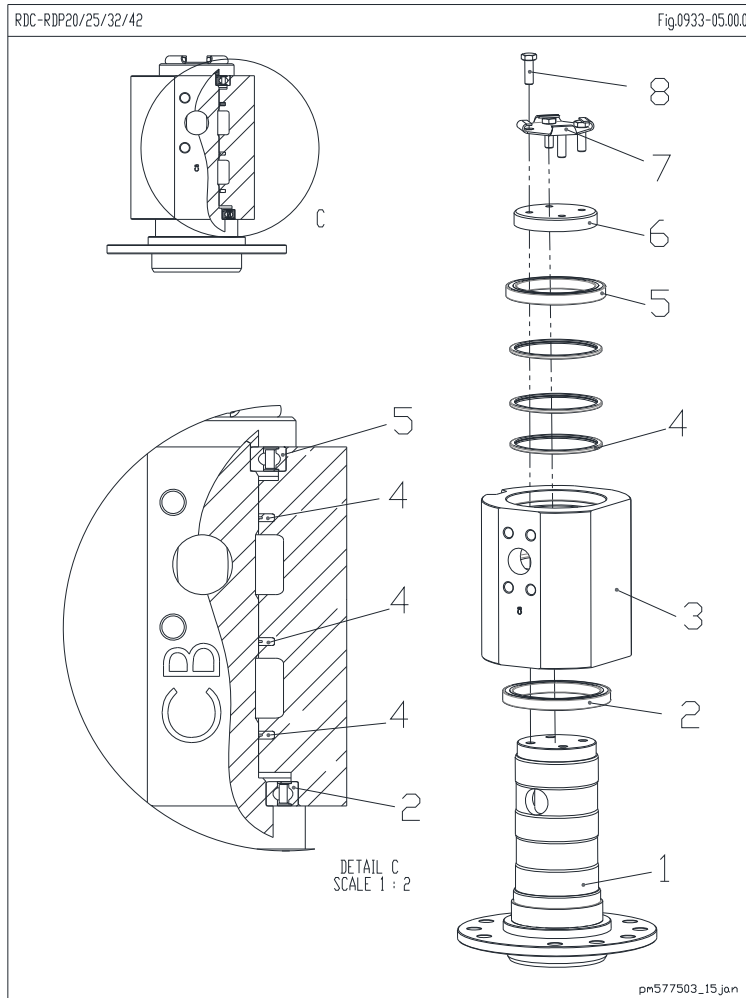


Fig. 4-5 (0933-05.00.0)

Parts are common to both RDP25 and RDP32 except where noted

Table 4.5 RDP25 / 32

Pos	Part Name	Part No.	Specification	Qty	Note
1	Stator D2053 RB			1	
2	Deep Groove Ball Bearing	61821-2RS1		1	
3	Housing D2053 RB			1	
4	Seal Kit	ZZDSAFDD2053		1	
5	Deep Groove Ball Bearing	61819-2RS1		1	
6	Cover			1	
7	Cover Plate			1	
8	Hexagon head screw	ZZBM01010100030	M10 x 30 mm DIN 933-8.8	4	

4.6 Spare Parts

Figures and parts lists are common to both RDP25 and RDP32 except where noted

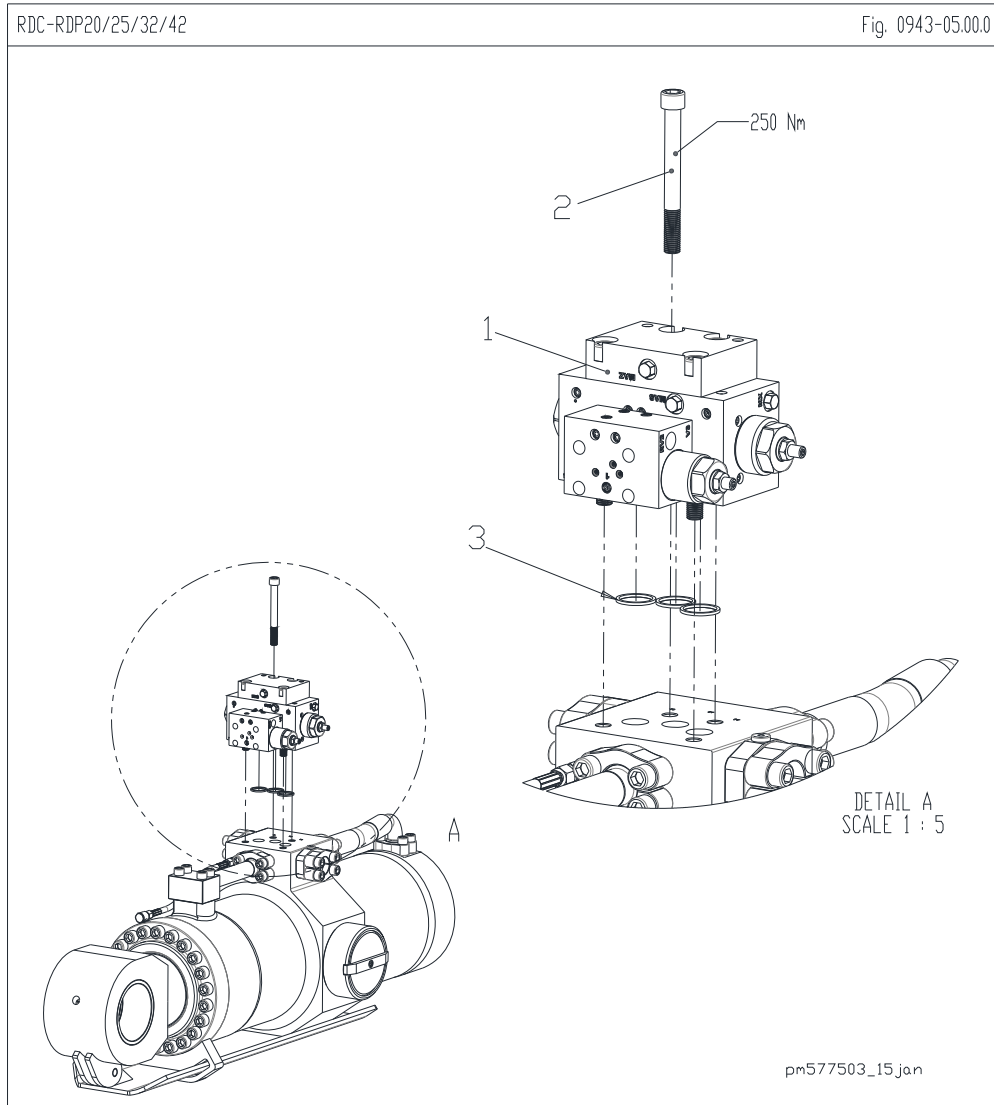


Fig. 4-6 (0943-05.00.0)

Parts are common to both RDP25 and RDP32 except where noted

Table 4.6 RDP25 / 32

<u>Pos</u>	<u>Part Name</u>	<u>Part No.</u>	<u>Specification</u>	<u>Qty</u>	<u>Note</u>
1	Regeneration Manifold	ZZVB1379143249	max. 400 lpm	1	
2	Socket head bolt	ZZBM07000160150	M16 x 150 DIN 912-12.9	4	
3	SAE HD seal	ZZDS14041001600		3	

4.6.1 Spare Parts Exclusive to RDP25 Only

Figure Exclusive to RDP25 Only.

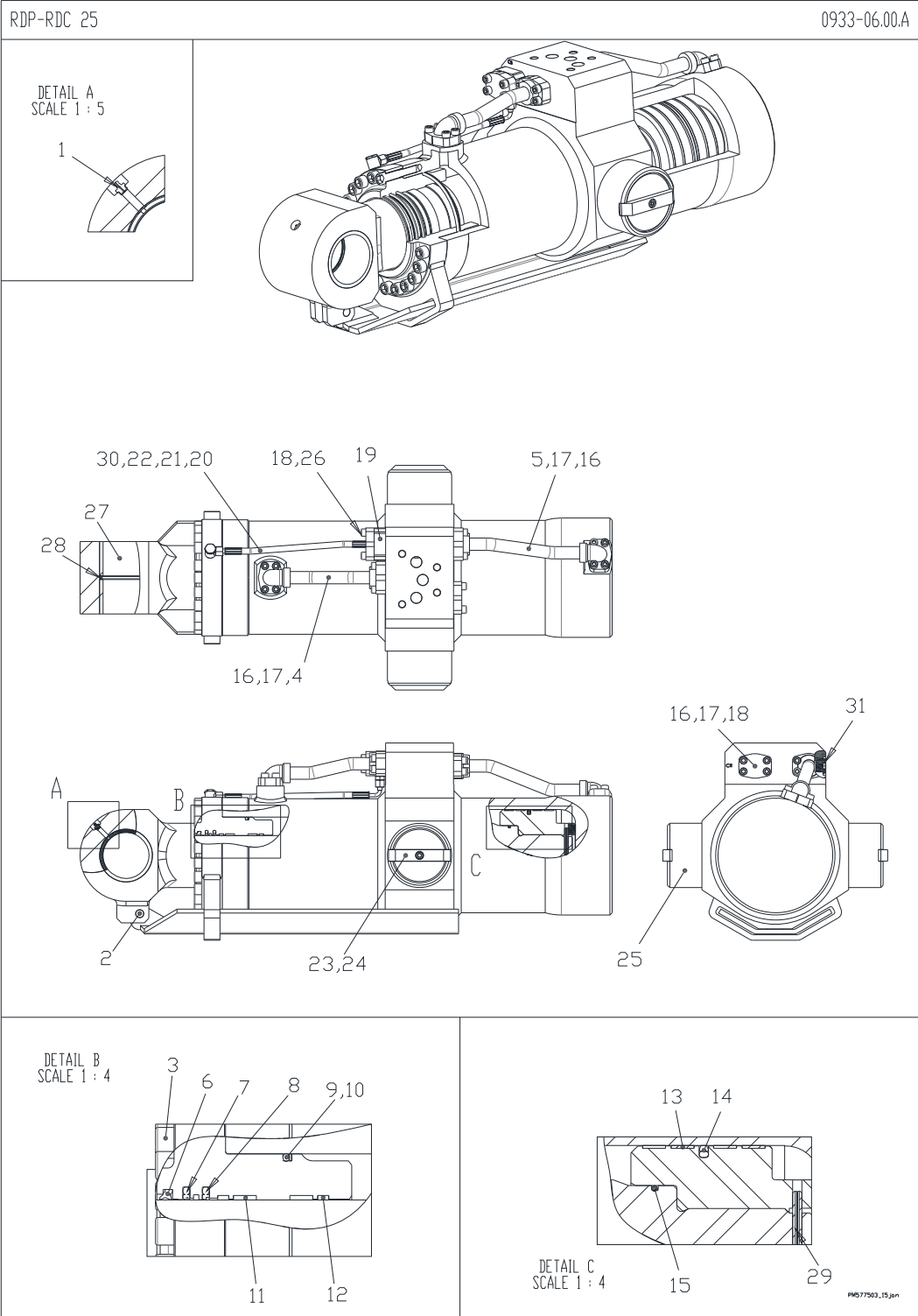


Fig. 4-6.1 (0933-06.00.A) Figure exclusive to RDP25 only.

4.6.1 Spare Parts Exclusive to RDP25 Only

Table 4.6.1 Parts List Exclusive to RDP25 Only

<u>Pos</u>	<u>Part Name</u>	<u>Part No.</u>	<u>Specification</u>	<u>Qty</u>	<u>Note</u>
1	Grease fitting	ZZBM72210100180	M10 x 1-180°	1	25
2	Hexagon head screw	ZZBM01010200050	M20 x 50 DIN 933-8.8	1	25
3	Socket head screw	ZZBM07000160080	M16 x 80 mm DIN 912-12.9	22	25
4	Hydraulic pipe			1	25
5	Hydraulic pipe			1	25
---	Seal kit	ZZDSAFD36013	Kit includes pos 6 thru 15. Available only as a complete set	1	25
6	Dirt wiper	ZZDSAFD36013		1	25
7	Step seal	ZZDSAFD36013		1	25
8	Step seal	ZZDSAFD36013		1	25
9	O-Ring	ZZDSAFD36013		1	25
10	Backup ring	ZZDSAFD36013		1	25
11	Slyd ring	ZZDSAFD36013		2	25
12	Slyd ring	ZZDSAFD36013		2	25
13	Slyd ring	ZZDSAFD36013		4	25
14	Glyd ring	ZZDSAFD36013		1	25
15	O-Ring	ZZDSAFD36013		1	25
16	SAE HD seal	ZZDS14041001200		7	25
17	Socket head screw	ZZBM07000100035	M10 x 35 mm DIN 912-12.9	20	25
18	Blind flange		3/4 SAE-6000 PSI	2	25
19	Connection flange			1	25
20	Hydraulic hose			1	25
21	Banjo coupling	ZZSL5406		1	25
22	Straight male stud fitting	ZZSL5087		1	25
23	Socket head screw	ZZBM07000100030	M10 x 30 mm DIN 912-12.9	2	25
24	Locking strip			2	25
25	Bush			2	25
26	Socket head screw	ZZBM07000100060	M10 x 60 mm DIN 912-12.9	4	25
27	Bush			2	25
28	Securing ring			1	25
29	Tension pin			1	25
30	Cartridge check valve			1	25
31	Plug	ZZSL7032	BSP 3/4"	1	25

Note 25. Use is exclusive to RDP25.

4.6.2 Spare Parts Exclusive to RDP32 Only

Figure Exclusive to RDP32 Only.

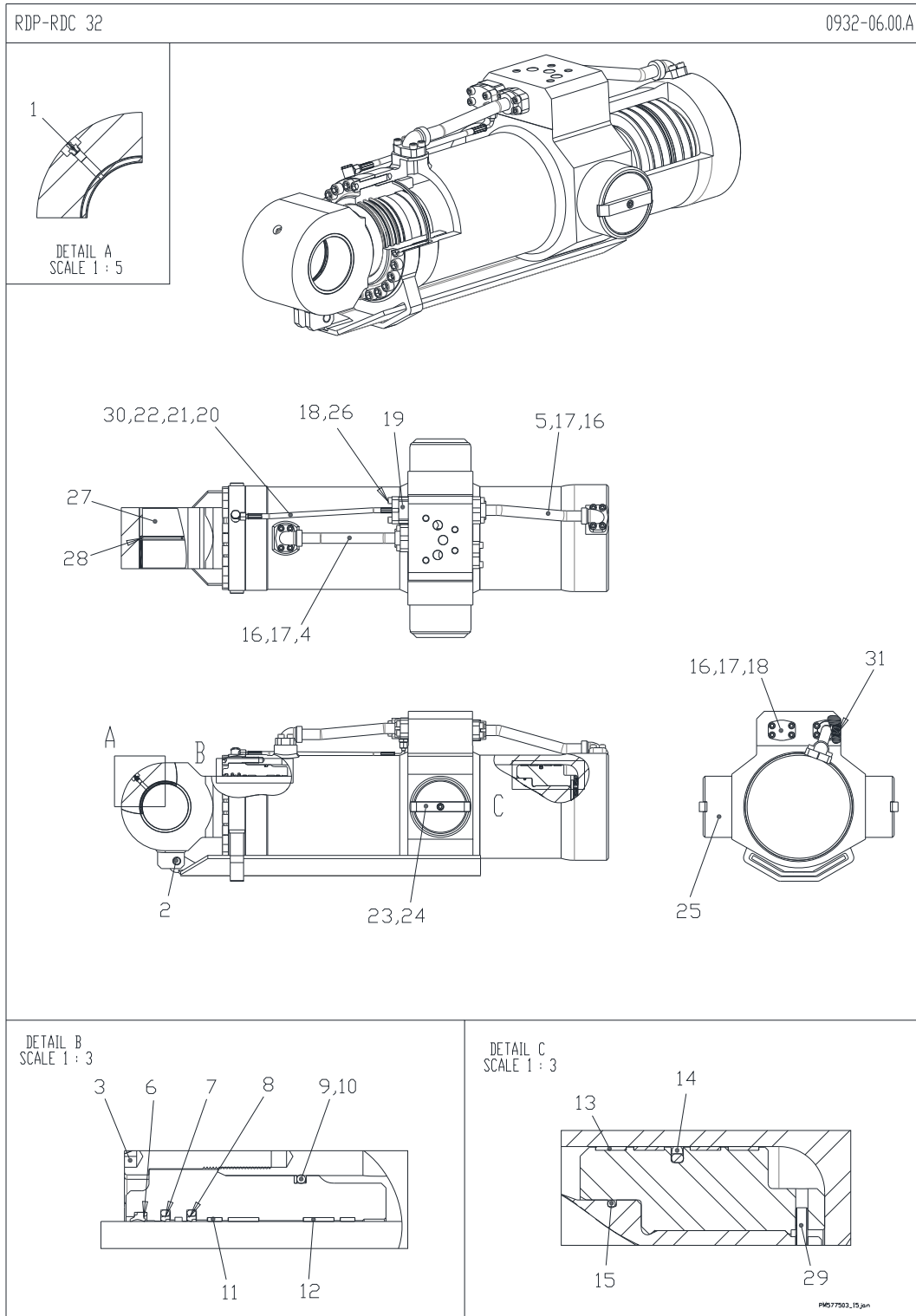


Fig. 4-6.2 (0932-06.00.A) Figure exclusive to RDP32 only.

4.6.2 Spare Parts Exclusive to RDP32 Only

Table 4.6.2 Parts List Exclusive to RDP32 Only

Pos	Part Name	Part No.	Specification	Qty	Note
1	Grease fitting	ZZBM72210100180	M10 x 1-180°	1	32
2	Hexagon head screw	ZZBM01010200050	M20 x 50 DIN 933-8.8	1	32
3	Socket head screw	ZZBM07000160080	M16 x 80 mm DIN 912-12.9	22	32
4	Hydraulic pipe			1	32
5	Hydraulic pipe			1	32
---	Seal kit	ZZDSAFD36014	Kit includes pos 6 thru 15. Available only as a complete set	1	32
6	Dirt wiper	ZZDSAFD36014		1	32
7	Step seal	ZZDSAFD36014		1	32
8	Step seal	ZZDSAFD36014		1	32
9	O-Ring	ZZDSAFD36014		1	32
10	Backup ring	ZZDSAFD36014		1	32
11	Slyd ring	ZZDSAFD36014		2	32
12	Slyd ring	ZZDSAFD36014		2	32
13	Slyd ring	ZZDSAFD36014		4	32
14	Glyd ring	ZZDSAFD36014		1	32
15	O-Ring	ZZDSAFD36014		1	32
16	SAE HD seal	ZZDS14041001200		7	32
17	Socket head screw	ZZBM07000100035	M10 x 35 mm DIN 912-12.9	20	32
18	Blind flange		3/4 SAE-6000 PSI	2	32
19	Connection flange			1	32
20	Hydraulic hose			1	32
21	Banjo coupling	ZZSL5406		1	32
22	Straight male stud fitting	ZZSL5087		1	32
23	Socket head screw	ZZBM07000100030	M10 x 30 mm DIN 912-12.9	2	32
24	Locking strip			2	32
25	Bush			2	32
26	Socket head screw	ZZBM07000100060	M10 x 60 mm DIN 912-12.9	4	32
27	Bush			2	32
28	Securing ring			1	32
29	Tension pin			1	32
30	Cartridge check valve			1	32
31	Plug	ZZSL7032	BSP 3/4"	1	32

Note 32. Use is exclusive to RDP32.

4.7 Spare Parts

Figures and parts lists are common to both RDP25 and RDP32 except where noted

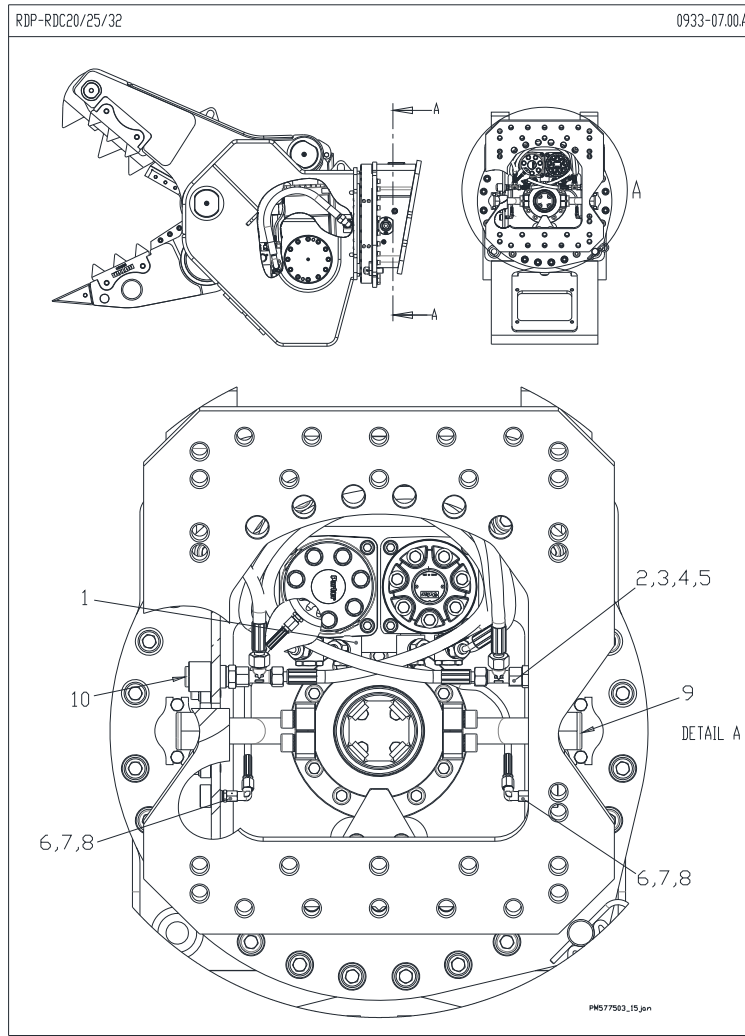


Fig. 4-7 RDP25/32 (0933-07.00.A)

Table 4.7 RDP25 / 32

<u>Pos</u>	<u>Part Name</u>	<u>Part No.</u>	<u>Specification</u>	<u>Qty</u>	<u>Note</u>
1	Banjo coupling	ZZSL5460	DSW 12 SR (1/2") S	4	
2	Straight male stud fitting	ZZSL5129	GE 12S (1/2") ED	2	
3	Adjustable L-Coupling	ZZSL6612	ELD 12 S	2	
4	Hydraulic Hose	ZZSL406	Rotar 406	2	
5	Hydraulic Hose	ZZSL407	Rotar 407	2	
6	Straight male stud fitting	ZZSL5070	GE 6L 1/8" ED	4	
7	Adjustable elbow coupling	ZZSL6006	EW 06L	3	
8	Lubrication hose	ZZSL408	Rotar 408	2	
9	Plug	ZZSL7060	VST-R 1 1/4" WD	2	
10	Plug	ZZSL7040	VST-R 1/2" WD	2	

4.8 Spare Parts

Figures and parts lists are common to both RDP25 and RDP32 except where noted

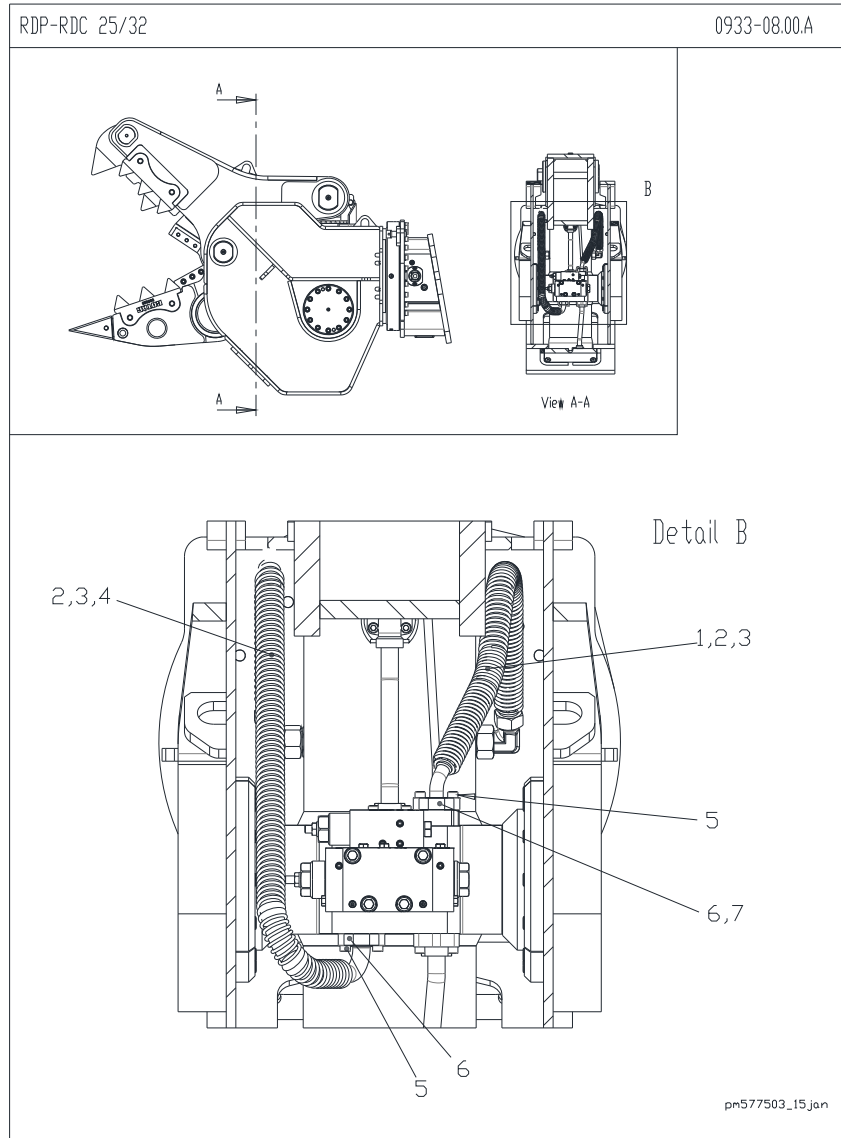


Fig. 4-8 RDP25/32 (0933-08.00.A)

Table 4.8 RDP25 / 32

<u>Pos</u>	<u>Part Name</u>	<u>Part No.</u>	<u>Specification</u>	<u>Qty</u>	<u>Note</u>
1	Hydraulic hose (Jaw Close)	ZZSL334		1	
2	Adjustable elbow coupling	ZZSL6025		2	
3	Straight male stud fitting	ZZSL5250		2	
4	Hydraulic hose (Jaw Open)	ZZSL335		1	
5	Socket Head Bolt	ZZBM07000100060	M10 x 60 mm DIN 912-12.9	4	
6	Split flange	ZZSL9970		4	
7	HD seal	ZZDS14041001200		2	
8	Socket Head Bolt	ZZBM07000100035	M10 x 35 mm DIN 912-12.9	4	

5.0 How To Order Spare Parts

Please provide complete information including the Product, Model and Serial Number when ordering parts. See Section 2.3 Owner's record of the equipment.

Product Demolition Pulverizer – RDP Series
 Model _____
 Serial No. _____

Please fill out completely

Line	Part Name	Part Number	Quantity	Price
1				
2				
3				
4				
5				
6				
7				
8				
9				
10				

Your contact information

Your Name _____ Company Name _____
 Phone _____ Account Number _____
 Fax _____ Purchase order _____
 Email _____ Shipping method _____

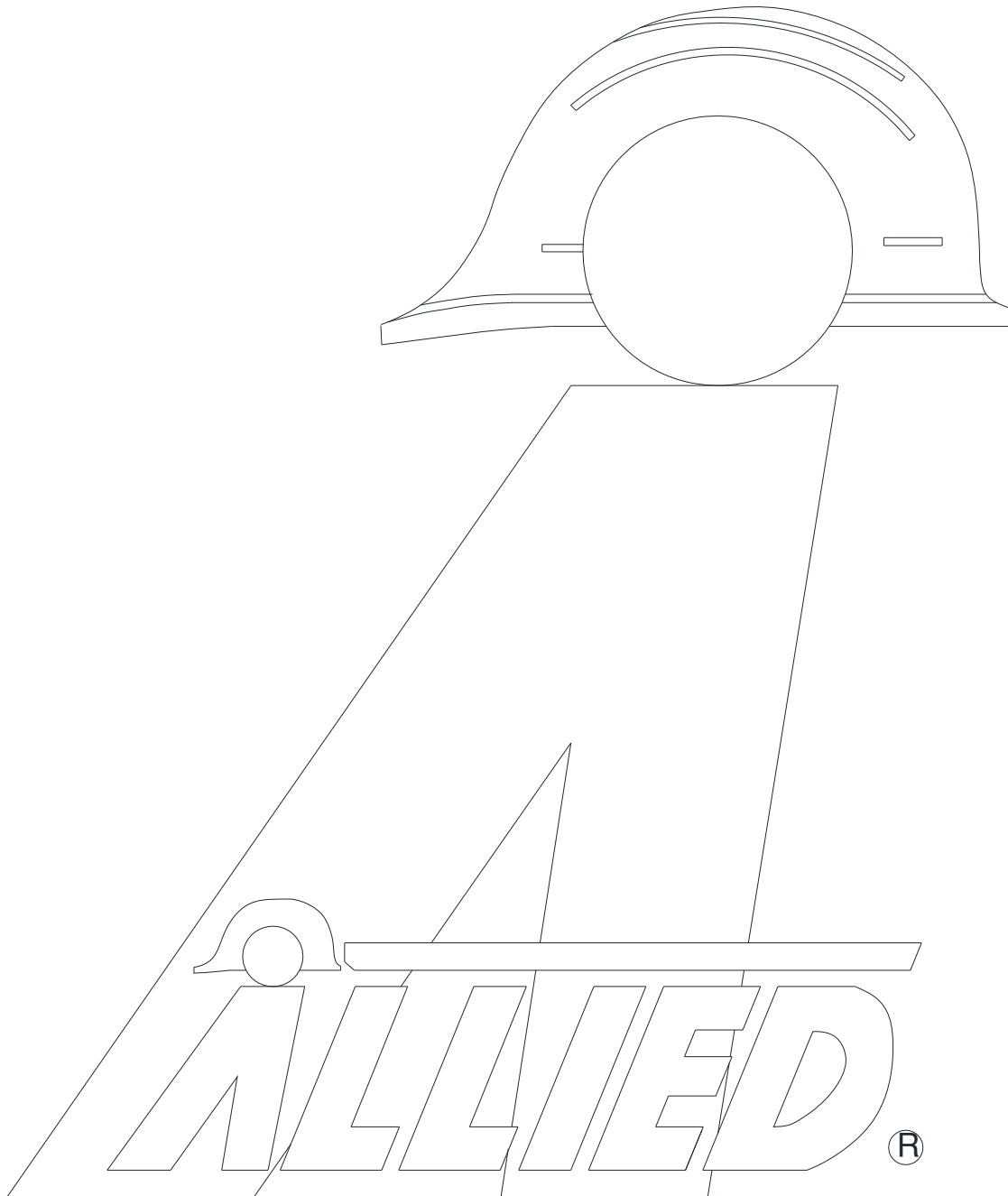
See note*

Billing Address _____ Shipping Address _____

***Note: All backordered parts will be shipped when available via the same method as the original order unless initialed and checked below:**

Initials _____
 Ship complete order only
 Ship available parts and contact customer on disposition of backordered parts
 Other – specify below

Special Instructions



3900 Kelley Avenue, Cleveland, Ohio 44114
Tel: 216-431-2600 Fax: 216-431-2601
e-mail: Sales@AlliedCP.com
website: <http://www.AlliedCP.com>