



HYDRAULIC HAMMER

RAMMER 2155

ECO

Demolition/Trenching

Boulder breaking

Serial No.

2155B0700-UP

TABLE OF CONTENTS

1. Housing unit ECO, Demolition/Trenching	4
2. Housing unit Boulder breaking	6
3. Housing unit Ramlube II ECO, Demolition/Trenching	8
4. Accumulator	9
5. Main valve	10
6. Pressure control valve	11
7. Relief valve	12
8. Tie rods.	13
9. Body parts.	14
10. Front head	16
11. Lower tool bushing.	17
12. Greasing device.	18
13. Greasing device refilling parts	20
14. Grease filling device equipment with pressure release valve	21
15. Service kit for greasing device	22
16. Tool	24
17. Seal set	26
18. Service kit	28
19. Service kit 2	29
20. Greasing device Ramlube II kit	30
21. Greasing device Ramlube II.	32
22. Service kit for greasing device RG540 series	34
23. Tool box.	36

GENUINE RAMMER SPARE PARTS

Rammer genuine spare parts are designed and manufactured by using the latest technological knowledge and engineering skills. Rammer spare parts are made of the best available materials with the most advanced manufacturing techniques.

It is important that you use only genuine Rammer spare parts, to ensure an easy operation, maintenance and repair of the product. Please note that eventual warranty claims will be handled only if you have used genuine Rammer parts.

LOCATION OF THE SERIAL NUMBER

It is important to refer to the serial number of the product when ordering spare parts. The identification of serial number is the only proper means of maintaining and identifying parts for a specific product. The location of the equipment serial number is pointed in "Operation and maintenance" manual.

SPARE PART ORDERS

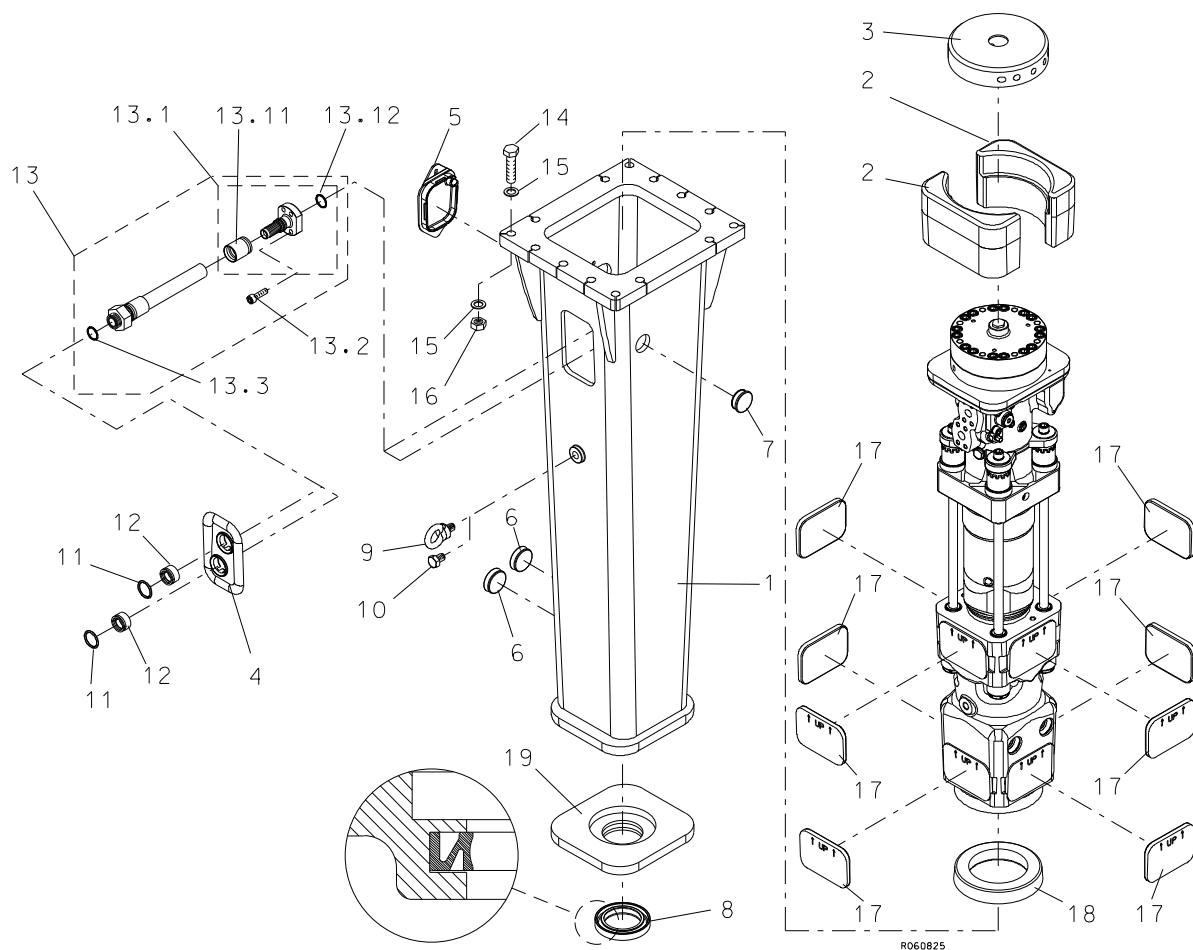
Quick spare part deliveries are ensured by exact orders.

Required information:

- Name of customer and contact person
- Order number (when available)
- Delivery address
- Mode of delivery (air mail, etc.)
- Required delivery date
- Invoicing address
- Model and serial number of the product
- Name, number and required amount of spare parts

PARTS

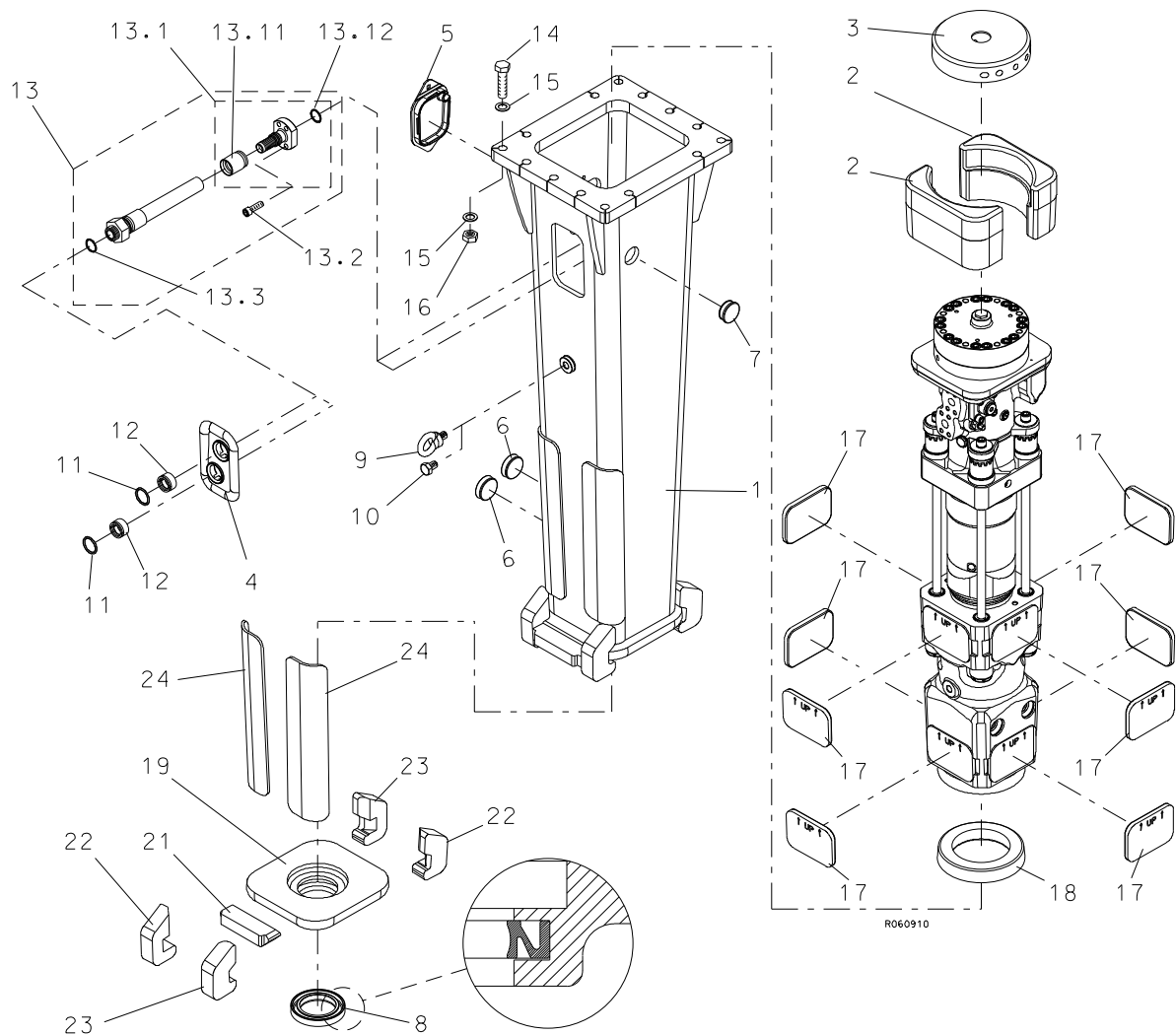
1. HOUSING UNIT ECO, DEMOLITION/TRENCHING



Item	Description	Part no.	Specification	Note	Qty
1	Housing	160773			1
2	Pad	160678			2
3	Buffer	301000			1
4	Shield plate	159327			1
5	Service hatch	160812			1
6	Plug	153024			2
7	Plug	102086			1
8	Seal	155187			1
9	Lifting eye	90605	M24 DIN 580		1
10	Hex. screw	900025	M24x35-8.8 ISO 4017		1
11	O-ring	94061	D47		2
12	Bushing	160925			2
13	Hose assembly (incl. parts 13.1-13.3)	952389	L=600		2
13.1	Hose coupling (incl. parts 13.11-13.12)	400638			1
13.11	Bushing	101336			1
13.12	O-ring	90009	D38		1
13.2	Hex. socket screw	90593	M14x45-8.8 ISO 4762		4
13.3	O-ring	951690	D30		1

Item	Description	Part no.	Specification	Note	Qty
14	Hex. screw	90589	M24x110-12.9 ISO 4014		14
15	Washer	90511	24 ISO 7416		14
16	Lock nut	90507	M24-12 DIN 985		14
17	Wear plate	157940			8
18	Buffer	171543			1
19	Bottom plate	160752			1
20	Label set (incl.part 20.1)	170455			1
20.1	Safety label set	169400	English		1

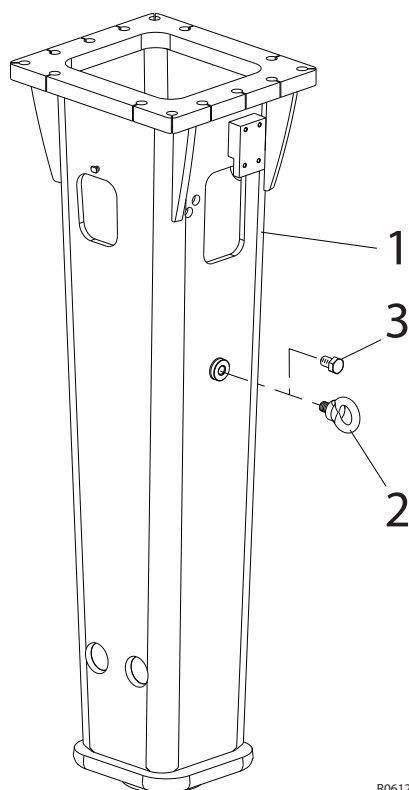
2. HOUSING UNIT BOULDER BREAKING



Item	Description	Part no.	Specification	Note	Qty
1	Housing	162777			1
2	Pad	160678			2
3	Buffer	301000			1
4	Shield plate	159327			1
5	Service hatch	160812			1
6	Plug	153024			2
7	Plug	102086			1
8	Seal	155187			1
9	Lifting eye	90605	M24 DIN 580		1
10	Hex. screw	900025	M24x35-8.8 ISO 4017		1
11	O-ring	94061	D47		2
12	Bushing	160925			2
13	Hose assembly (incl. parts 13.1-13.3)	952389	L=600		2
13.1	Hose coupling (incl. parts 13.11-13.12)	400638			1
13.11	Bushing	101336			1

Item	Description	Part no.	Specification	Note	Qty
13.12	O-ring	90009	D38		1
13.2	Hex. socket screw	90593	M14x45-8.8 ISO 4762		4
13.3	O-ring	951690	D30		1
14	Hex. screw	90589	M24x110-12.9 ISO 4014		14
15	Washer	90511	24 ISO 7416		14
16	Lock nut	90507	M24-12 DIN 985		14
17	Wear plate	157940			8
18	Buffer	171543			1
19	Bottom plate	160752			1
20	Wear parts (incl. parts 21-24)	163124			1
21	Spacer plate	162778			1
22	Stone claw	162769			2
23	Stone claw	162771			2
24	Plate	162770			2
30	Label set (incl. part 30.1)	170455			1
30.1	Safety label set	169400	English		1

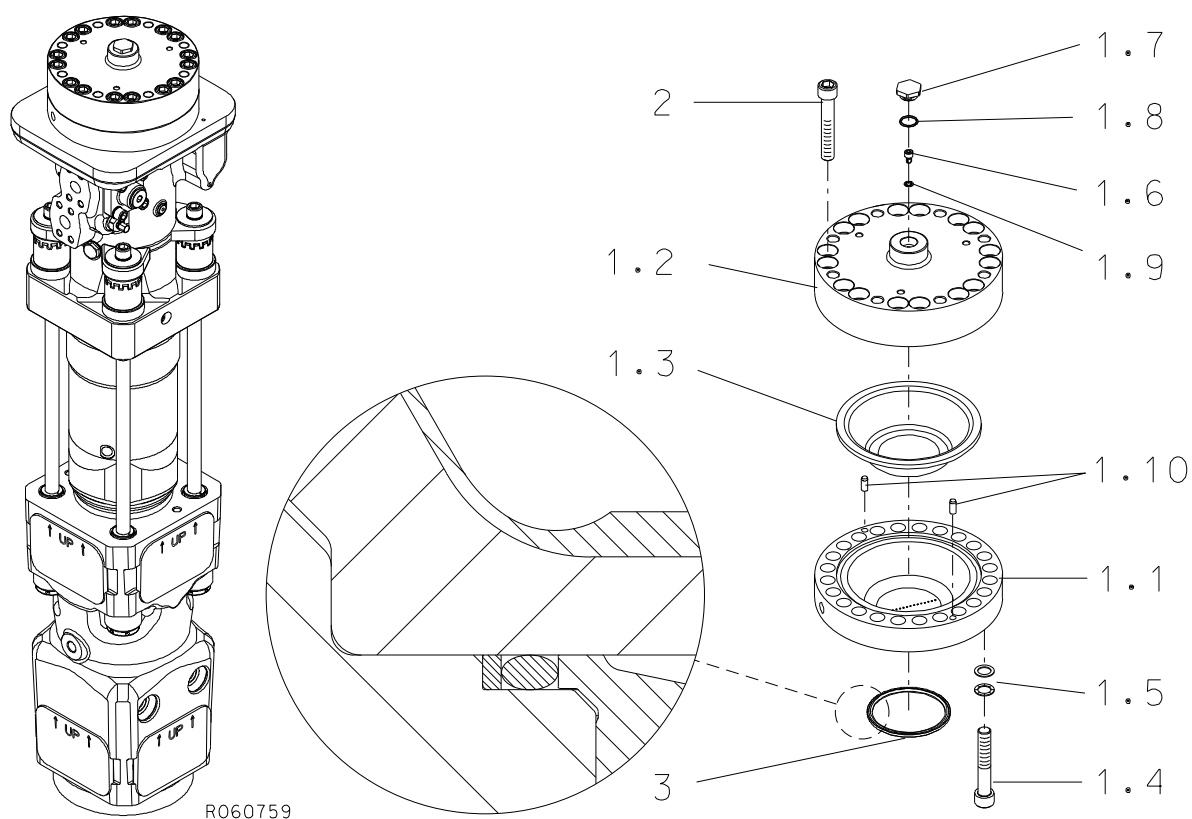
3. HOUSING UNIT RAMLUBE II ECO, DEMOLITION/TRENCHING



R061288

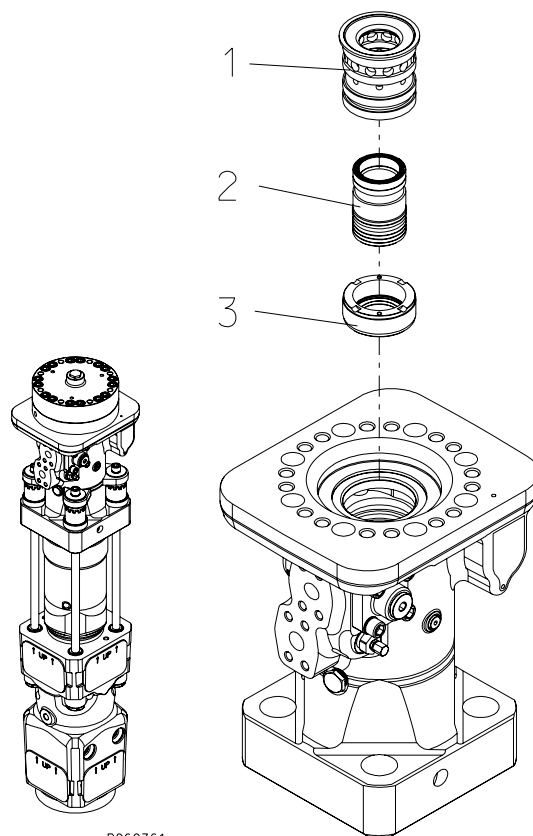
Item	Description	Part no.	Specification	Note	Qty
1	Housing /incl. parts 2-3)	173528			1
2	Lifting eye	90605	M24 DIN 580		1
3	Hex. screw	900025	M24x35-8.8 ISO 4017		1

4. ACCUMULATOR



Item	Description	Part no.	Specification	Note	Qty
1	Accumulator (incl. parts 1.1-1.10)	154008			1
1.1	Accumulator bottom	150108			1
1.2	Accumulator cover	154009			1
1.3	Membrane	30190			1
1.4	Accumulator screw	900022	M20x120-8.8 ISO 4762		8
1.5	Lock washer	91010	M20 NORD-LOCK		8
1.6	Filling plug	40368			1
1.7	Shield plug	154015			1
1.8	O-ring	910006	D23	*	1
1.9	Usit-ring	90056	8-13.9-1	*	1
1.10	Parallel pin	90304	10m6x24 DIN 6325		2
2	Accumulator screw	900022	M20x120-8.8 ISO 4762		16
3	Seal	40104	D114	*	1
	*) Are included in seal set				

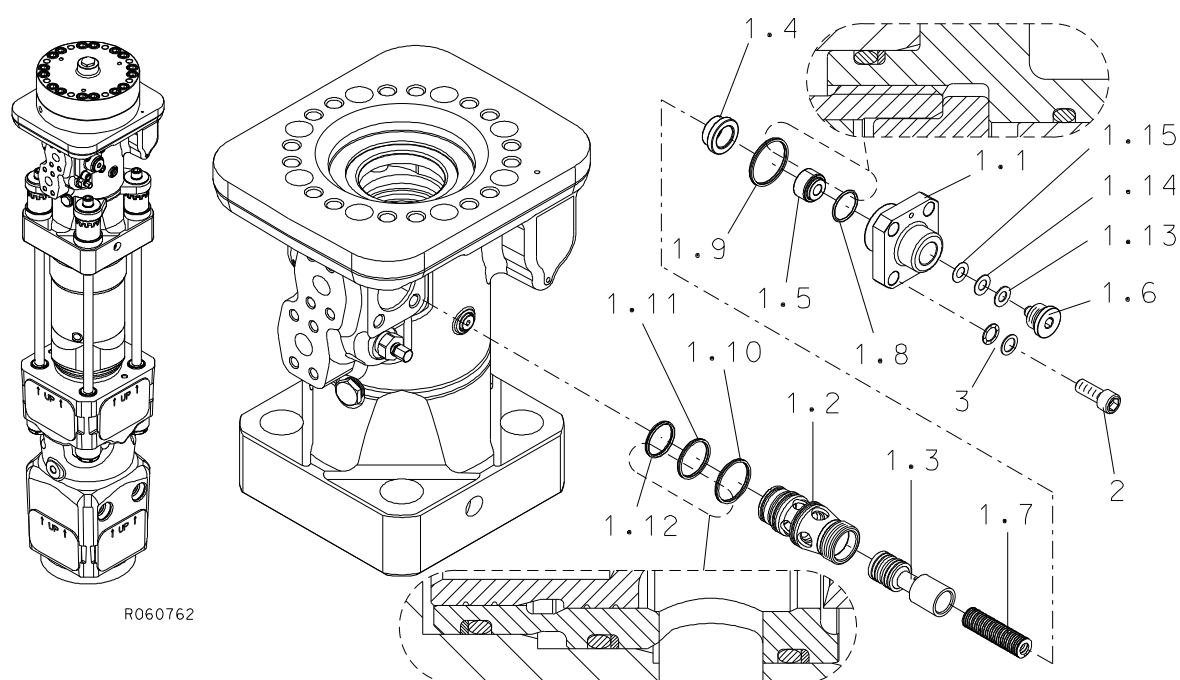
5. MAIN VALVE



R060761

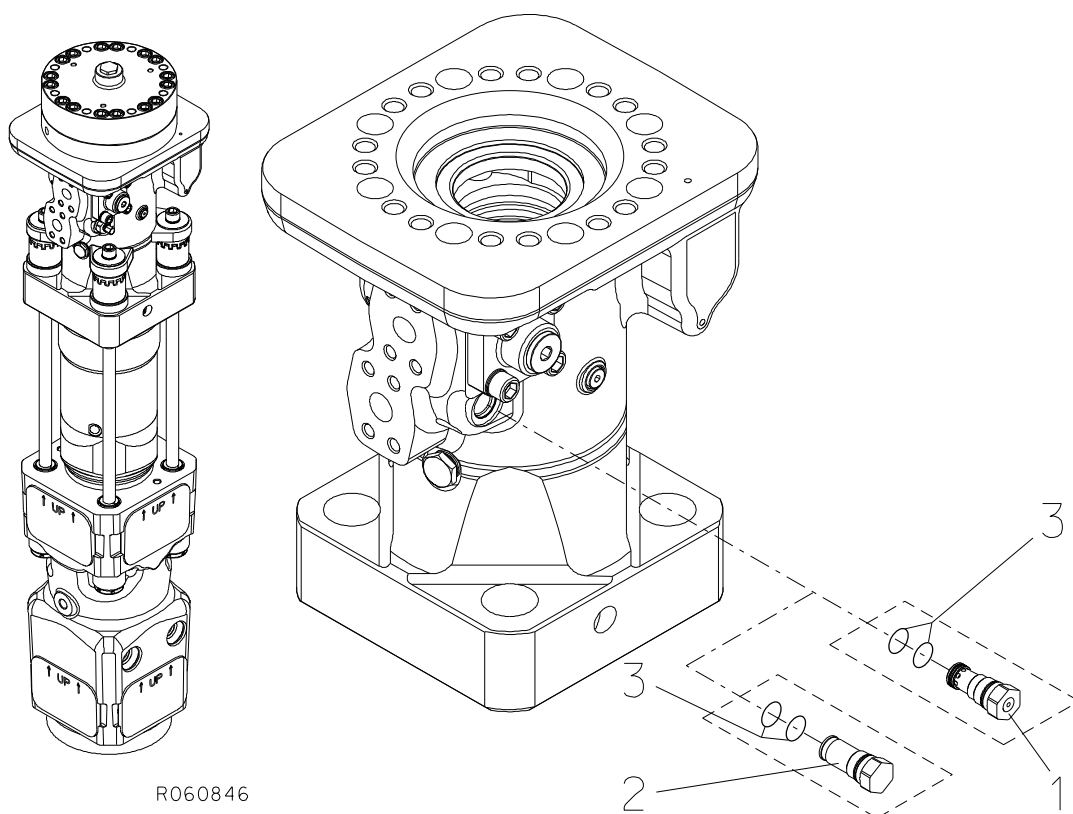
Item	Description	Part no.	Specification	Note	Qty
1	Slide ring	113175			1
2	Distributor	113173			1
3	Assembly ring	113174			1

6. PRESSURE CONTROL VALVE



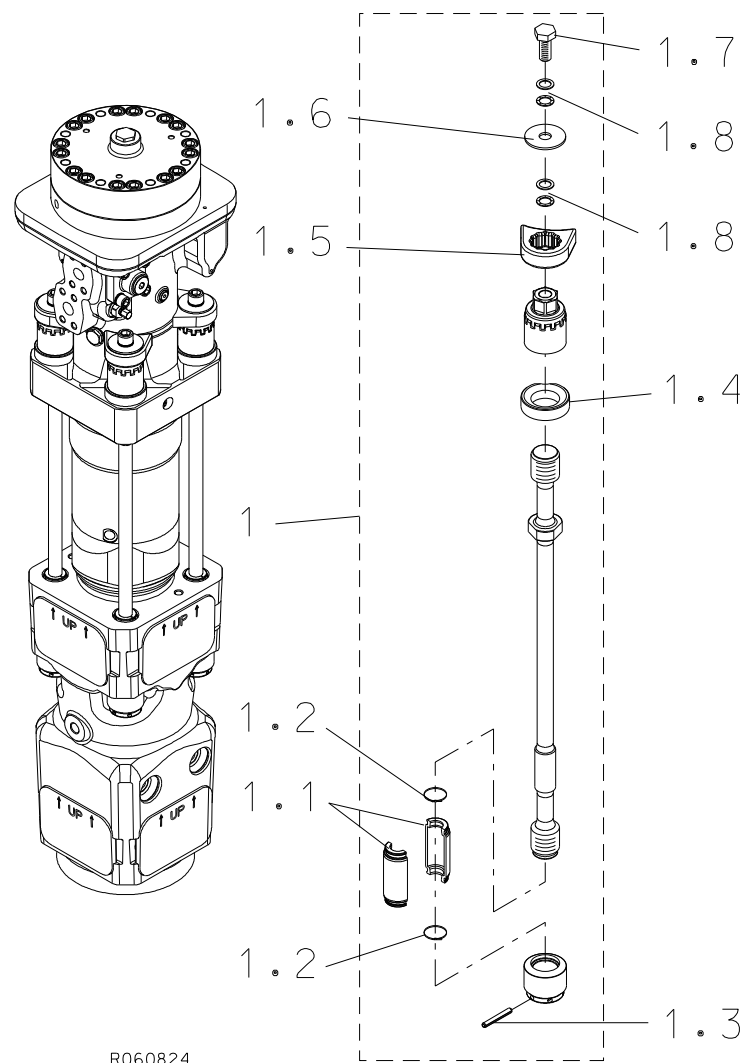
Item	Description	Part no.	Specification	Note	Qty
1	Pressure control valve (incl. parts 1.1-1.15)	160618			1
1.1	Cover	160617			1
1.2	Valve housing	155612			1
1.3	Spool	155613			1
1.4	Bushing	155615			1
1.5	Spring guide	155611			1
1.6	Plug	112512			1
1.7	Spring	90104			1
1.8	O-ring	90017	D34	*	1
1.9	Seal	41374	D55	*	1
1.10	Seal	41375	D50	*	1
1.11	Seal	41376	D45	*	1
1.12	Seal	113138	D40	*	1
1.13	Shim plate	42364	S=1.5		X
1.14	Shim plate	41793	S=1		X
1.15	Shim plate	41794	S=0.5		X
2	Hex. socket screw	91100	M16x40-8.8 ISO 4762		4
3	Lock washer	90597	M16 NORD-LOCK		4
	*) Are included in seal set				

7. RELIEF VALVE



Item	Description	Part no.	Specification	Note	Qty
1	Relief valve (incl. part 3)	951600			1
2	Plug (incl. part 3)	163118	Optional		1
3	Seal set for relief valve	951692		*	1
	*) Are included in seal set				

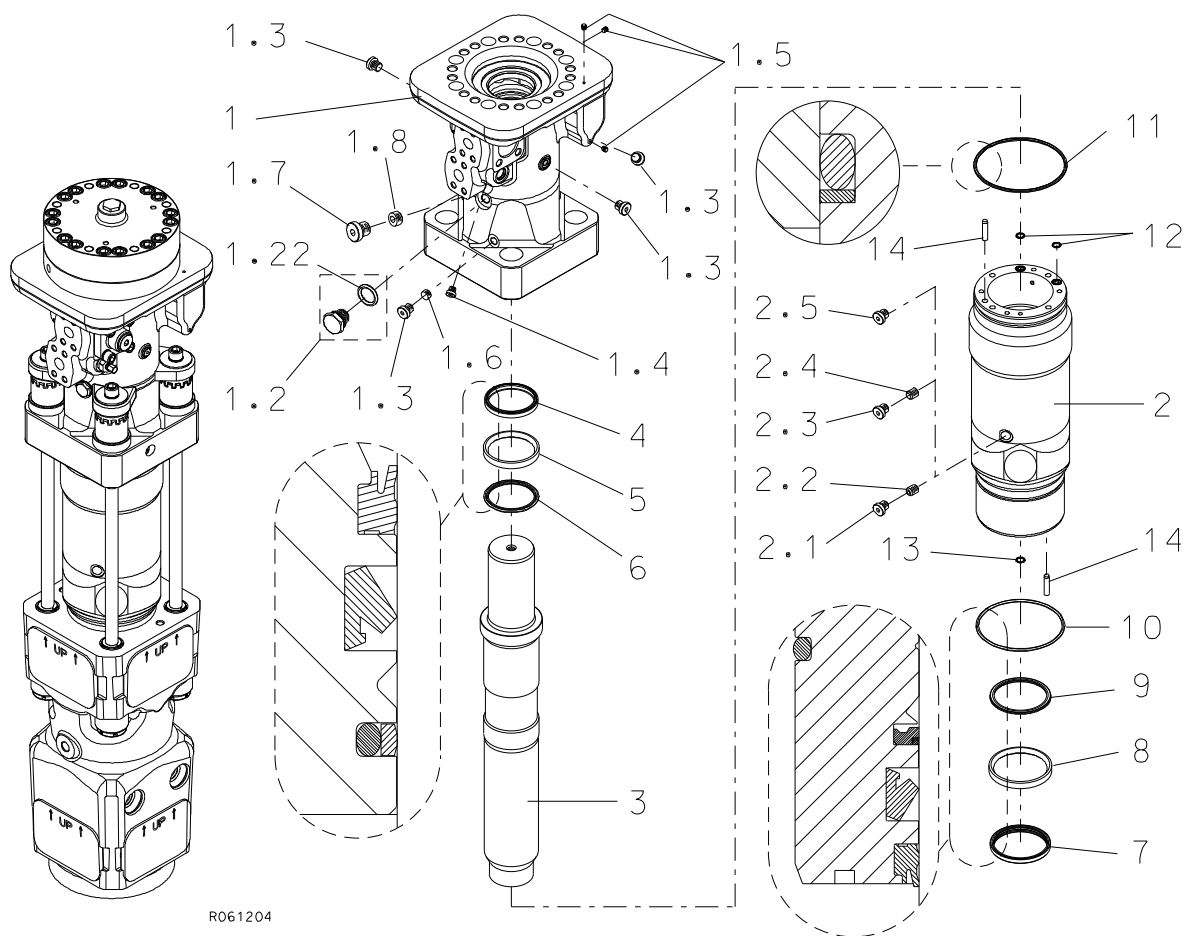
8. TIE RODS



R060824

Item	Description	Part no.	Specification	Note	Qty
1	Tie rod (incl. parts 1.1-1.8)	162244			4
1.1	Vibration dampening element	157939			2
1.2	Cable tie	952009			2
1.3	Split pin	952173	8x65 ISO 8752	*	1
1.4	Washer	157957			1
1.5	Lock plate	160402			1
1.6	Washer	160473			1
1.7	Hex. screw	90538	M20x40-8.8 ISO 4017		1
1.8	Lock washer	91010	M20 NORD-LOCK		2
	*) Are included in seal set				

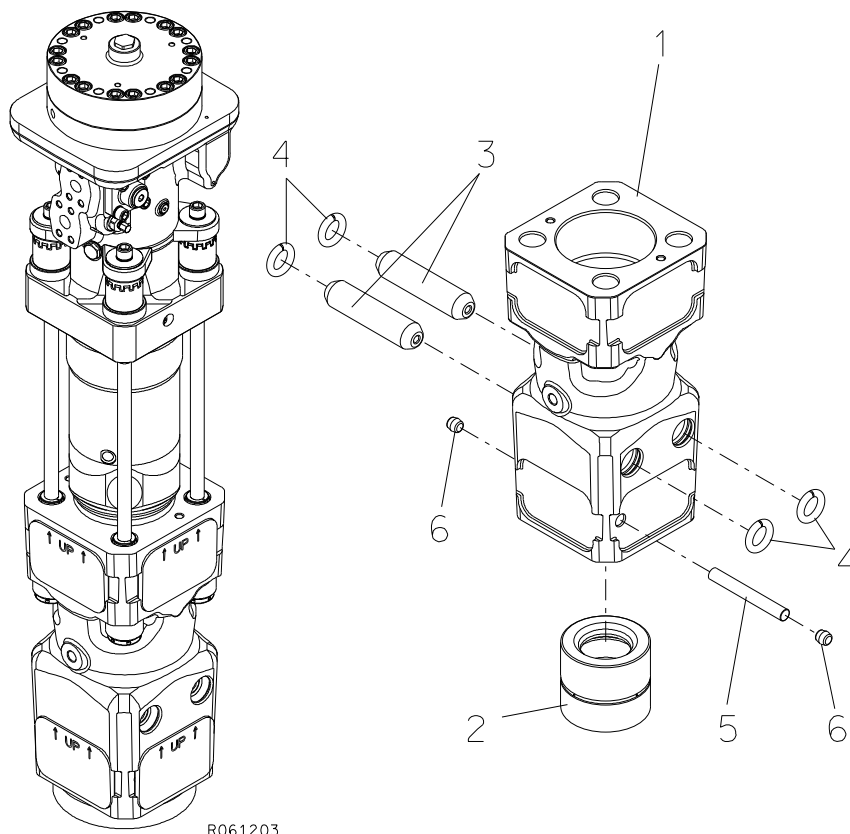
9. BODY PARTS



Item	Description	Part no.	Specification	Note	Qty
1	Valve body (incl. parts 1.2-1.8)	170943			1
1.2	Breather (incl. part 1.22)	101200			1
1.22	O-ring	902122	D24	*	1
1.3	Flange plug	90403	R1/4		4
1.4	Flange plug	93203	R1/8		1
1.5	Plug	915028			3
1.6	Nozzle	161922			1
1.7	Flange plug	90444	R3/8		1
1.8	Plug	93125			1
2	Cylinder (incl. parts 2.1-2.5)	171404			1
2.1	Flange plug	90403	R1/4, softened stroke		1
2.2	Nozzle	161470	softened stroke		1
2.3	Flange plug	90403	R1/4, normal stroke		1
2.4	Screw	952544	M10x12 ISO 4026, normal stroke		1
2.5	Flange plug	90403	R1/4, idle stroke prevention		1
3	Piston	156786			1
4	Wiper	951544	D100	*	1
5	Seal	950150	D100	*	1
6	Seal	155560	D100	*	1

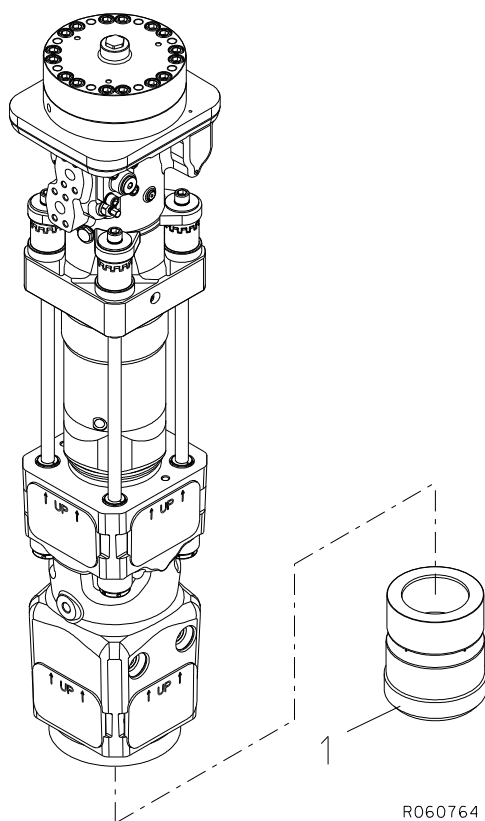
Item	Description	Part no.	Specification	Note	Qty
7	Wiper	951545	D115	*	1
8	Seal	951546	D115	*	1
9	Seal	951833	D115	*	1
10	O-ring	952174	D179	*	1
11	Seal	400341		*	1
12	O-ring	90011	D14	*	1
13	O-ring	951383	D15	*	1
14	Parallel pin	951668	12x50 ISO 8734		2
	*) Are included in seal set				

10. FRONT HEAD



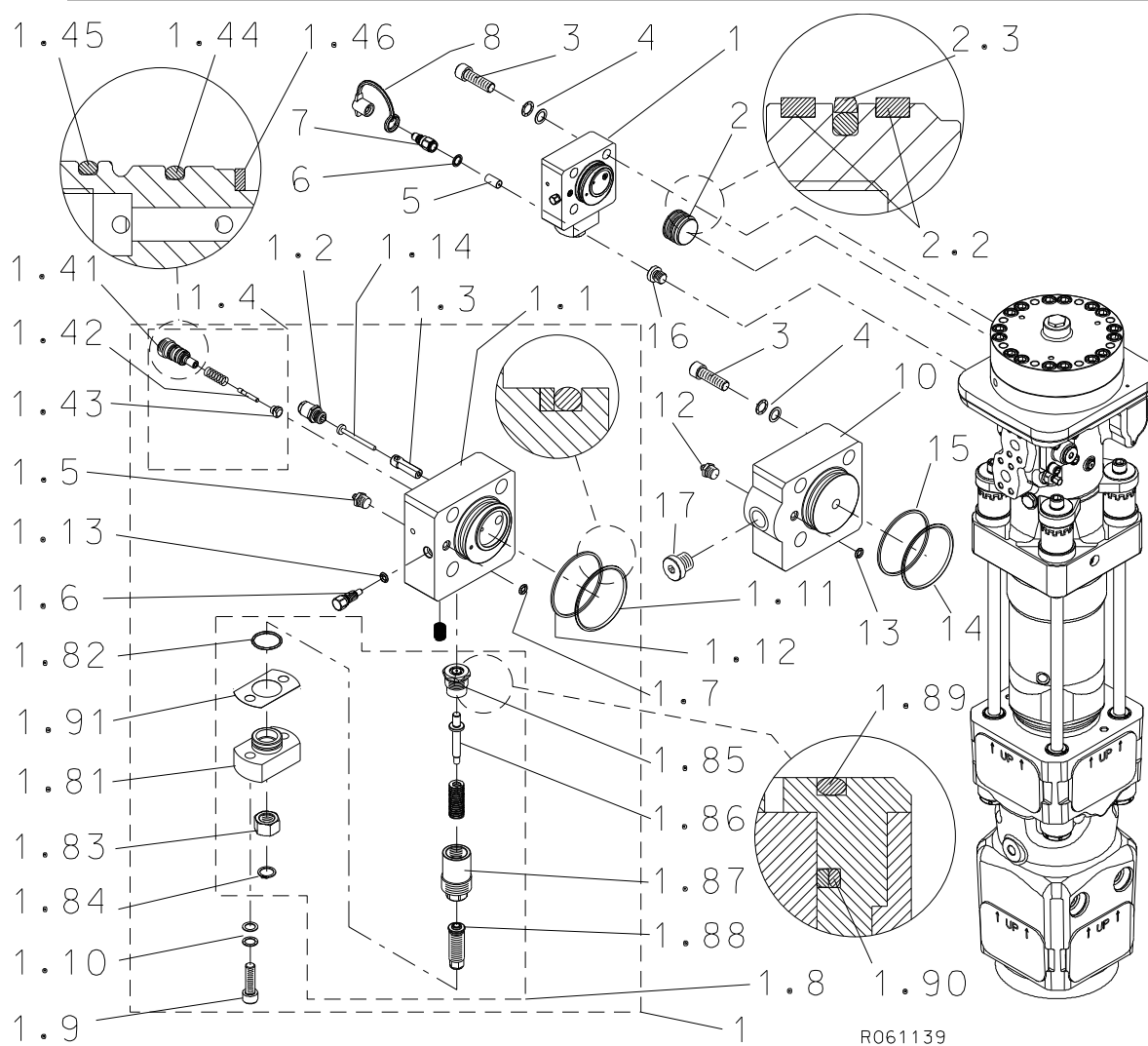
Item	Description	Part no.	Specification	Note	Qty
1	Front head	170944			1
2	Upper tool bushing	155541			1
3	Tool retaining pin	155537			2
4	Ring	153539			4
5	Retaining pin	150360			1
6	Rubber plug	104876			2

11. LOWER TOOL BUSHING



Item	Description	Part no.	Specification	Note	Qty
1	Lower tool bushing	155542			1

12. GREASING DEVICE

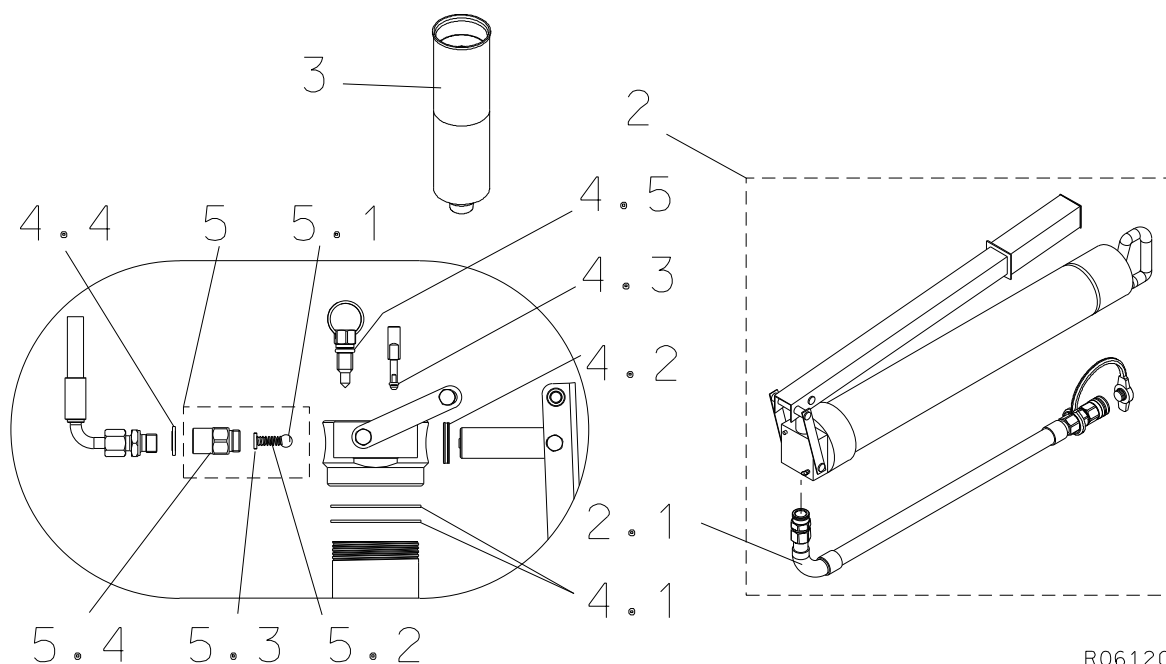


R061139

Item	Description	Part no.	Specification	Note	Qty
Kit1	Greasing device kit (incl. parts 1-8)	162802			1
1	Greasing device (incl. parts 1.1-1.14)	952268			1
1.1	Cover	952258			1
1.2	Pressure indicator	952269			1
1.3	Guide	952257			1
1.4	Valve cartridge (incl. parts 1.41-1.46)	952266			1
1.41	Body	952259			1
1.42	Spool	952260			1
1.43	Cover	952261			1
1.44	O-ring	952410	D13.1	**	1
1.45	O-ring	952411	D14.1	**	1
1.46	Seal	952416	12x16	**	1
1.5	Grease nipple	90200	R1/4	**	1
1.6	Screw	952265			1
1.7	O-ring	94104	D6	**	1

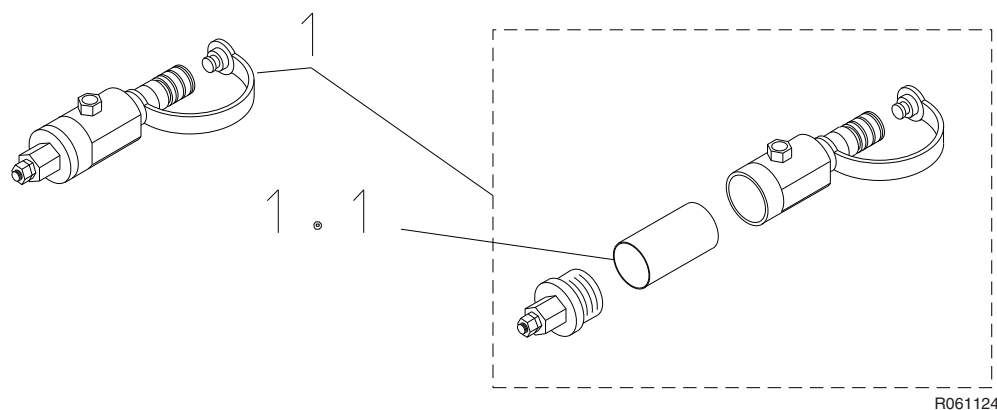
Item	Description	Part no.	Specification	Note	Qty
1.8	Doser cartridge (incl. parts 1.81-1.91)	952267			1
1.81	Cover	952263			1
1.82	O-ring	951819	D27	**	1
1.83	Nut	N/A	M16-8 ISO 4032		1
1.84	Retaining ring	952270	14x1 DIN 471	**	1
1.85	Cylinder	952256			1
1.86	Piston	952264			1
1.87	Locking bushing	952262			1
1.88	Screw	952255			1
1.89	O-ring	952412	D10	**	1
1.90	Seal	952413		**	1
1.91	Shim plate	166330			2
1.9	Hex. socket screw	90504	M10x30-8.8 ISO 4762		2
1.10	Lock washer	91037	M10 NORD-LOCK		2
1.11	O-ring	952408	D63	**	1
1.12	Supporting ring	952418		**	1
1.13	O-ring	952704	D7	**	1
1.14	Pin	952624			1
2	Piston (incl. parts 2.2-2.3)	952275			1
2.2	Guide ring	952415		**	2
2.3	Seal	952414		**	1
3	Hex. socket screw	901309	M16x55-8.8 ISO 4762		4
4	Lock washer	90597	M16 NORD-LOCK		4
5	Adapter	952291			1
6	USIT-ring	951711	U 13.7-20-1.5	*	1
7	Quick coupler	952283			1
8	Shield plug	952292			1
Kit2	Greasing block for manual greasing (incl. parts 4 and 10-17)	162803			1
10	Cover	170490			1
12	Grease nipple	90200	R1/4		1
13	O-ring	94104	D6	*	1
14	O-ring	952408	D63	*	1
15	Supporting ring	952418		*	1
16	Flange plug	90403	R1/4		1
17	Flange plug	90444	R3/8		1
Kit3	Service kit for greasing device	952417			1
	*) Are included in hammers seal set				
	***) Are included in service kit for greasing device				

13. GREASING DEVICE REFILLING PARTS



Item	Description	Part no.	Specification	Note	Qty
2	Grease pump (incl. part 2.1)	952640			1
2.1	Hose assembly	953510			1
3	Grease cartridge	951370	Special tool grease, Greasing device cartridge		1
4	Seal set for grease pump (incl. parts 4.1-4.5)	953527			1
4.1	Seal	N/A			2
4.2	Seal	N/A			1
4.3	O-ring	N/A	D3		1
4.4	Usit-ring	N/A			1
4.5	O-ring	N/A	D8		1
5	Spring parts (incl. parts 5.1-5.4)	954291			1
5.1	Ball	N/A			1
5.2	Spring	N/A			1
5.3	Spring guide	N/A			1
5.4	Connector	N/A			1

14. GREASE FILLING DEVICE EQUIPMENT WITH PRESSURE RELEASE VALVE

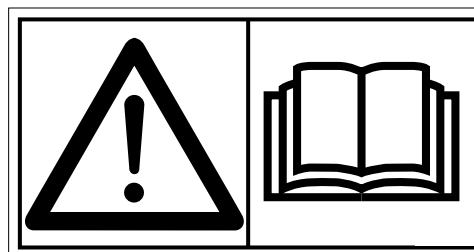
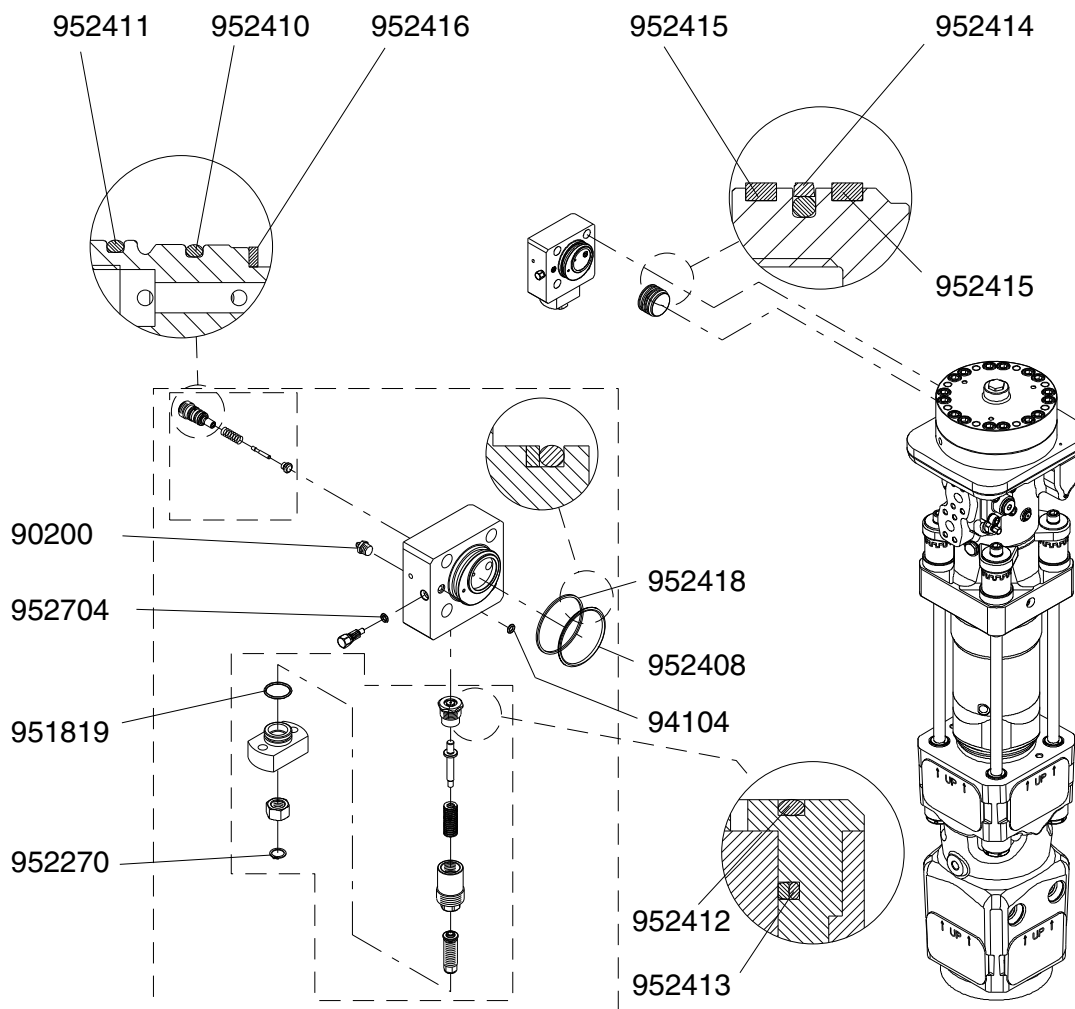


R061124

Item	Description	Part no.	Specification	Note	Qty
1	Grease filling device (incl. part 1.1)	952278			1
1.1	Filter cartridge	952637			1

15. SERVICE KIT FOR GREASING DEVICE

Service kit 952417

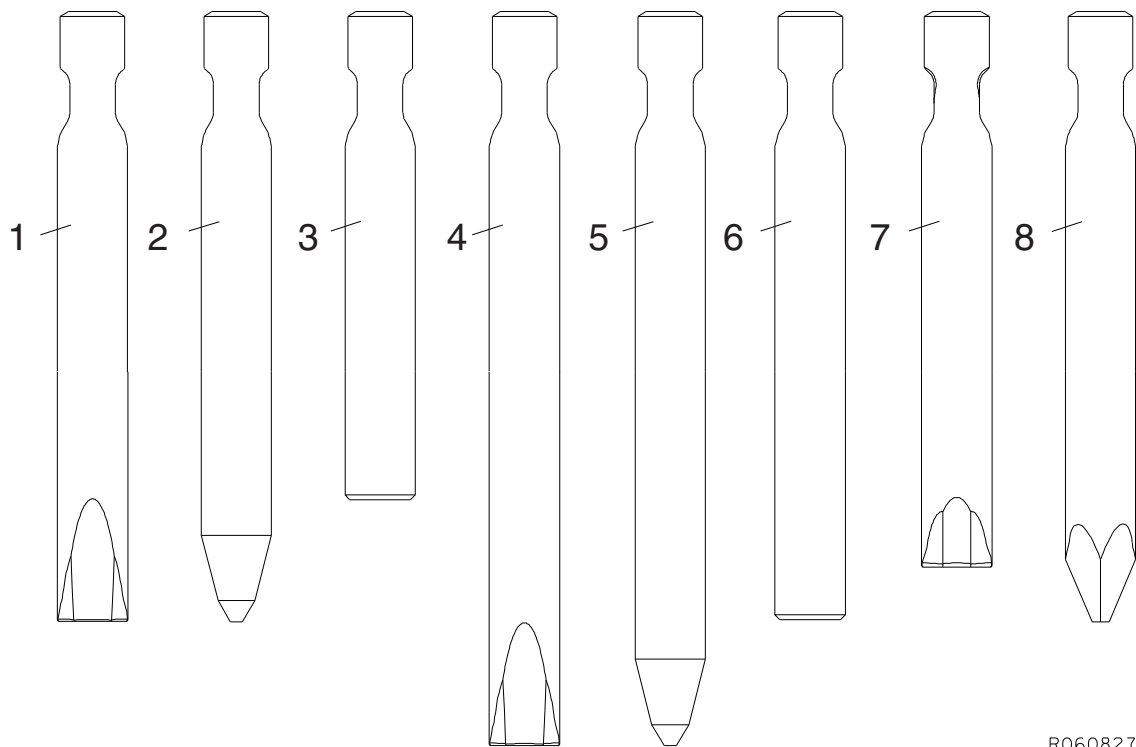


This summary only indicates the position of the seals. It must NOT be used as assembly instruction. Read the manual.

R060891

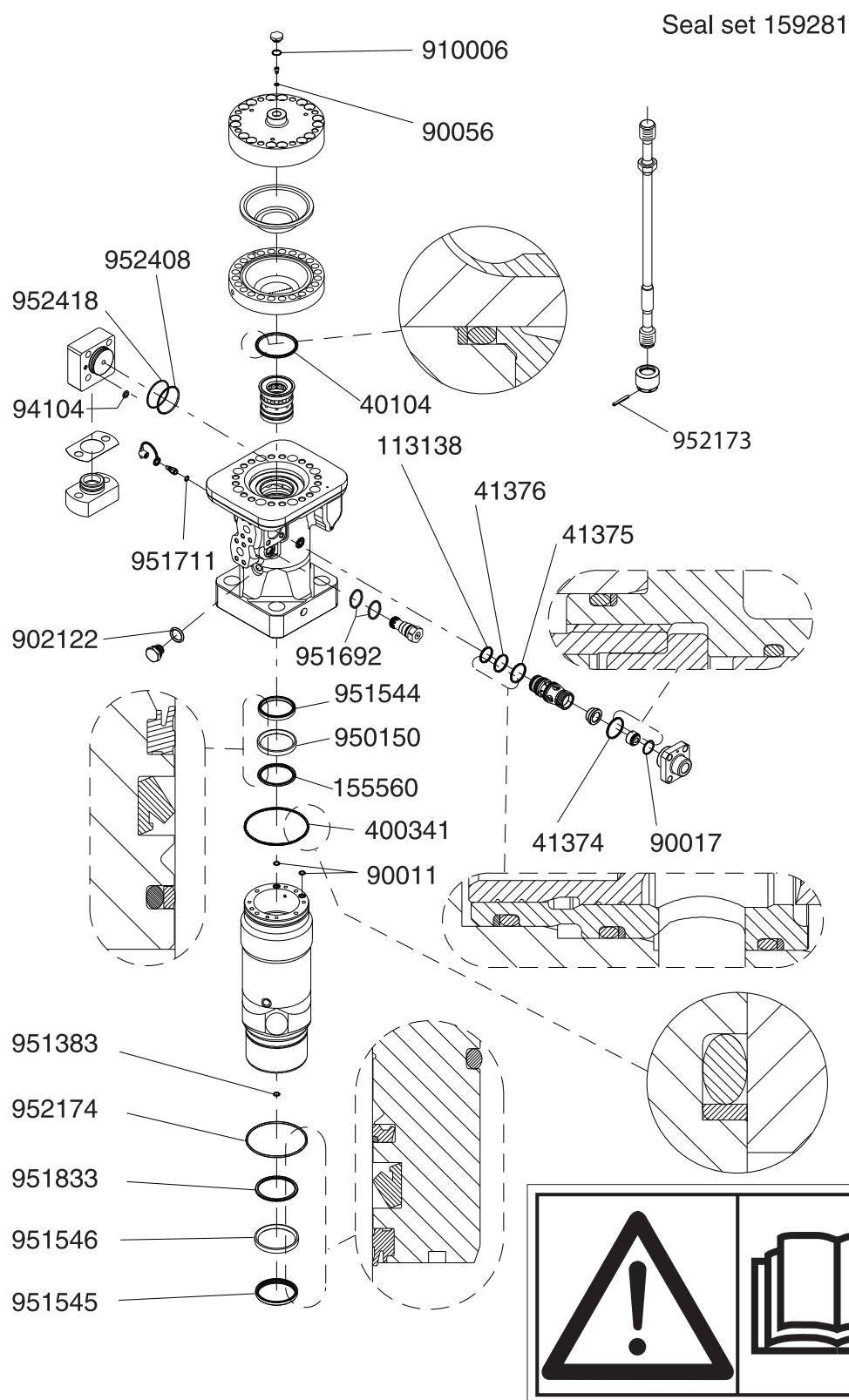
Item	Description	Part no.	Specification	Note	Qty
Kit	Service kit for greasing device (incl. parts 1-14)	952417			1
1	O-ring	952410	D13.1		1
2	O-ring	952411	D14.1		1
3	Seal	952416	12x16		1
4	Grease nipple	90200	R1/4		1
5	O-ring	94104	D6		1
6	O-ring	951819	D27		1
7	Retaining ring	952270	14x1 DIN 471		1
8	O-ring	952412	D10		1
9	Seal	952413			1
10	O-ring	952408	D63		1
11	Supporting ring	952418			1
12	O-ring	952704	D7		1
13	Guide ring	952415			2
14	Seal	952414			1
	Service kit for greasing device are not included in hammers seal set.				

16. TOOL



Item	Description	Part no.	Specification	Note	Qty
1	Chisel	551	L = 1050 mm, W = 82.7 kg, D = 118 mm		1
2	Moil point	553	L = 1050 mm, W = 82.7 kg, D = 118 mm		1
3	Blunt	554	L = 850 mm, W = 71.1 kg, D = 118 mm		1
4	Long chisel	552	L = 1150 mm, W = 90.5 kg, D = 118 mm		1
5	Long moil point	558	L = 1150 mm, W = 90.5 kg, D = 118 mm		1
6	Long blunt	554C1	L = 1050 mm, W = 88.3 kg, D = 118 mm		1
7	Limestone chisel	551F3	L = 1000 mm, W = 81 kg, D = 118 mm		1
8	Pyramid	553K3	L = 1050 mm, W = 82.7 kg, D = 118 mm		1

17. SEAL SET

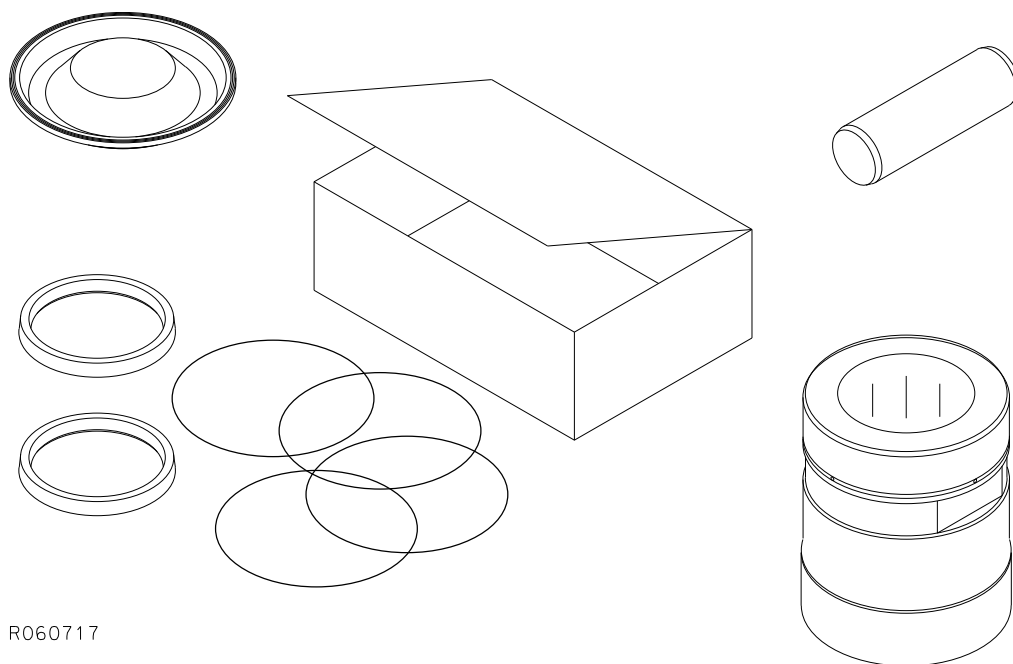


This summary only indicates the position of the seals. It must NOT be used as assembly instruction. Read the manual.

R061038

Item	Description	Part no.	Specification	Note	Qty
Kit	Seal set (incl. parts 1-26)	159281			1
1	Seal	40104	D114		1
2	O-ring	910006	D23		1
3	Usit-ring	90056	8-13.9-1		1
4	O-ring	90017	D34		1
5	Seal	41374	D55		1
6	Seal	41375	D50		1
7	Seal	41376	D45		1
8	Seal	113138	D40		1
9	Wiper	951544	D100		1
10	Seal	950150	D100		1
11	Seal	155560	D100		1
12	Wiper	951545	D115		1
13	Seal	951546	D115		1
14	Seal	951833	D115		1
15	O-ring	952174	D179		1
16	Seal	400341			1
17	O-ring	90011	D14		2
18	O-ring	951383	D15		1
19	O-ring	902122	D24		1
20	USIT-ring	951711	D13.7		1
21	Seal set for relief valve	951692			1
22	O-ring	952408			1
23	Support plug	952418			1
24	O-ring	94104			1
26	Split pin	952173	8x65 ISO 8752		4
	The seals for greasing device are not included in this seal set. They are included in the service kit for greasing device.				

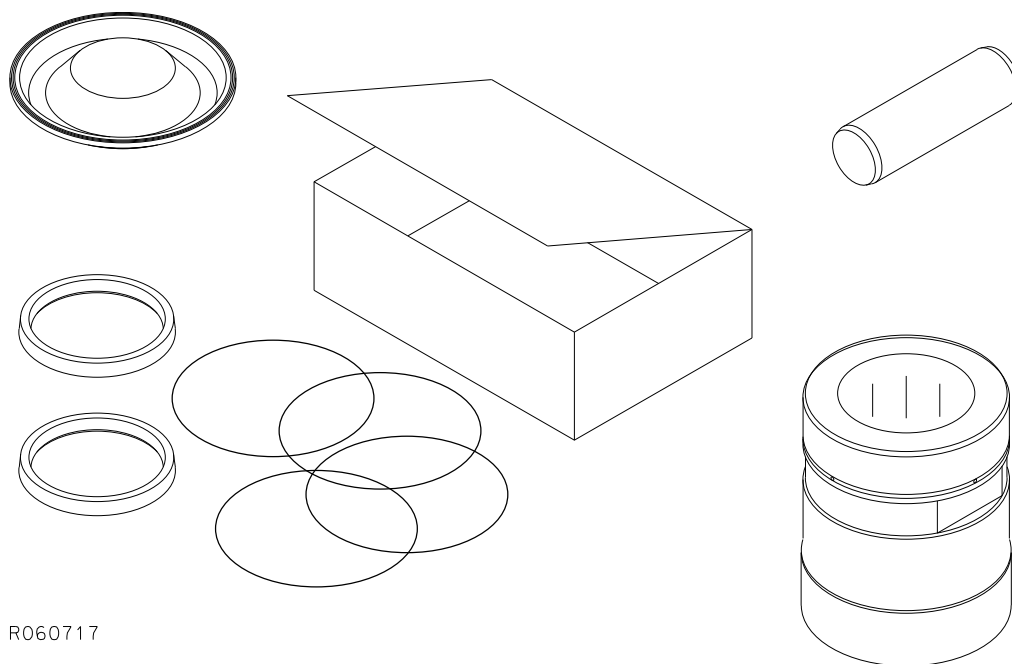
18. SERVICE KIT



R060717

Item	Description	Part no.	Specification	Note	Qty
Kit	Service kit (incl. parts 1 - 4)	K12155			1
1	Membrane	30190			1
2	Tool retaining pin	155537			2
3	Lower tool bushing	155542			1
4	Seal set	159281			1

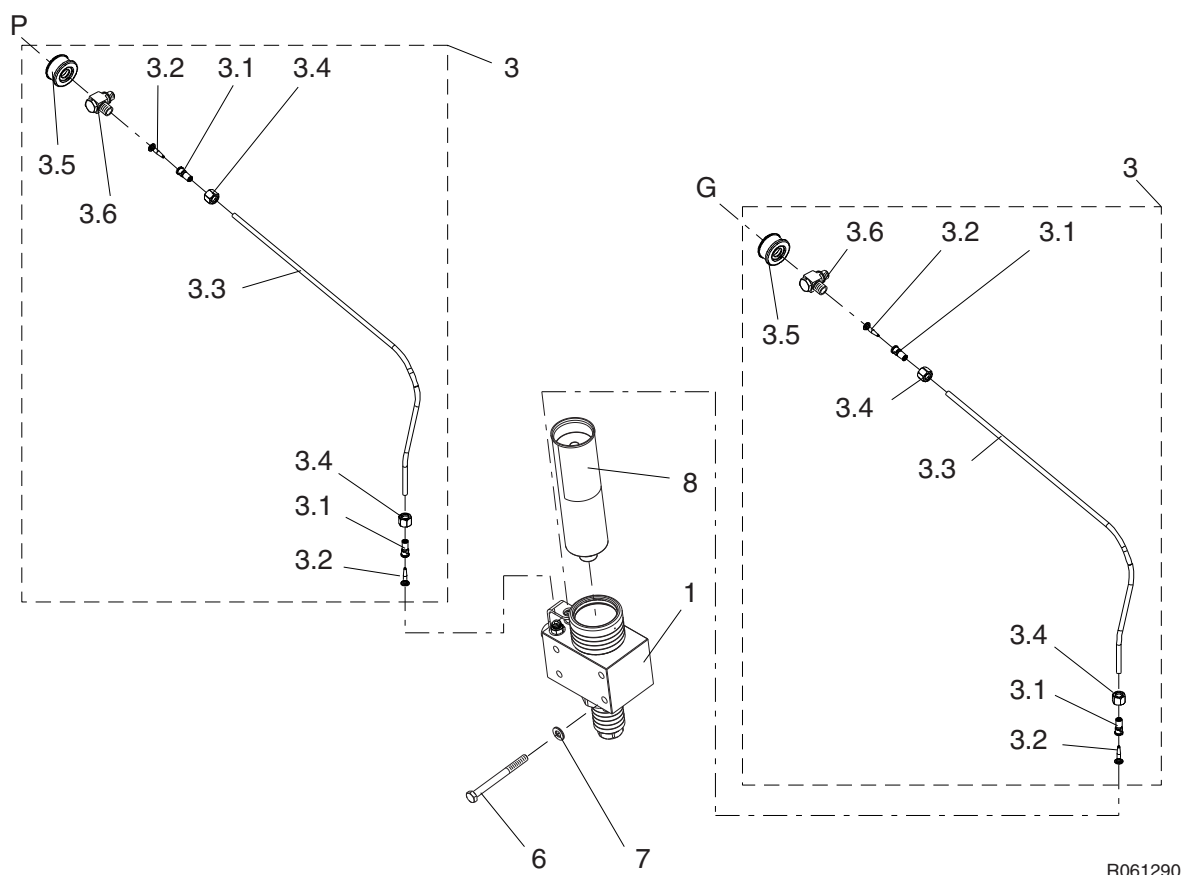
19. SERVICE KIT 2



R060717

Item	Description	Part no.	Specification	Note	Qty
Kit	Service kit (incl. parts 1 - 5)	K22155			1
1	Pad	160678			2
2	Buffer	301000			1
3	Wear plate	157940			8
4	Buffer	171543			1
5	Upper tool bushing	155541			1

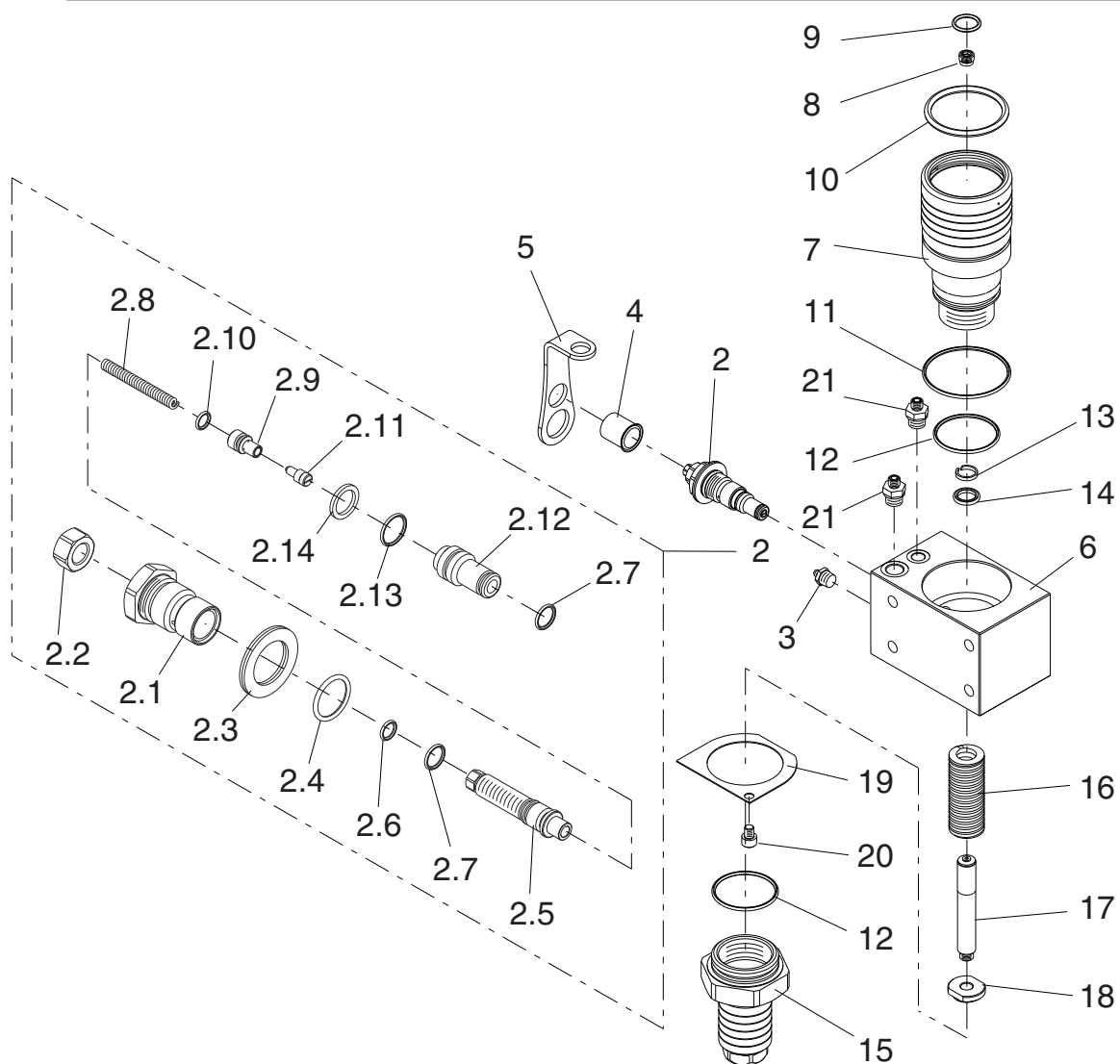
20. GREASING DEVICE RAMLUBE II KIT



R061290

Item	Description	Part no.	Specification	Note	Qty
1	Greasing device RG541	953344			1
3	Hose assembly (incl. parts 3.1-3.6)	173524			2
3.1	Sleeve	153035			2
3.2	Insert	153036			2
3.3	Hose	954555			1
3.4	Nut	951296			2
3.5	Rubber bushing	152172			1
3.6	Fitting	152729			1
6	Hex. screw	953794	M10x110-8.8 ISO 4014		4
7	Lock washer	953503	M10 NL10sp NORD-LOCK		4
8	Grease cartridge	951370	Special tool grease, Greasing device cartridge. Greasing device cartridges are also sold in boxes of 24.		1

21. GREASING DEVICE RAMLUBE II



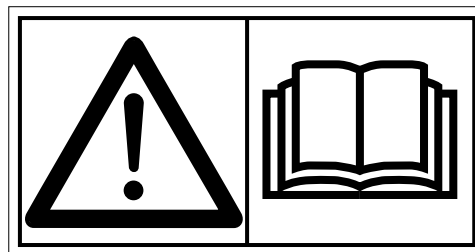
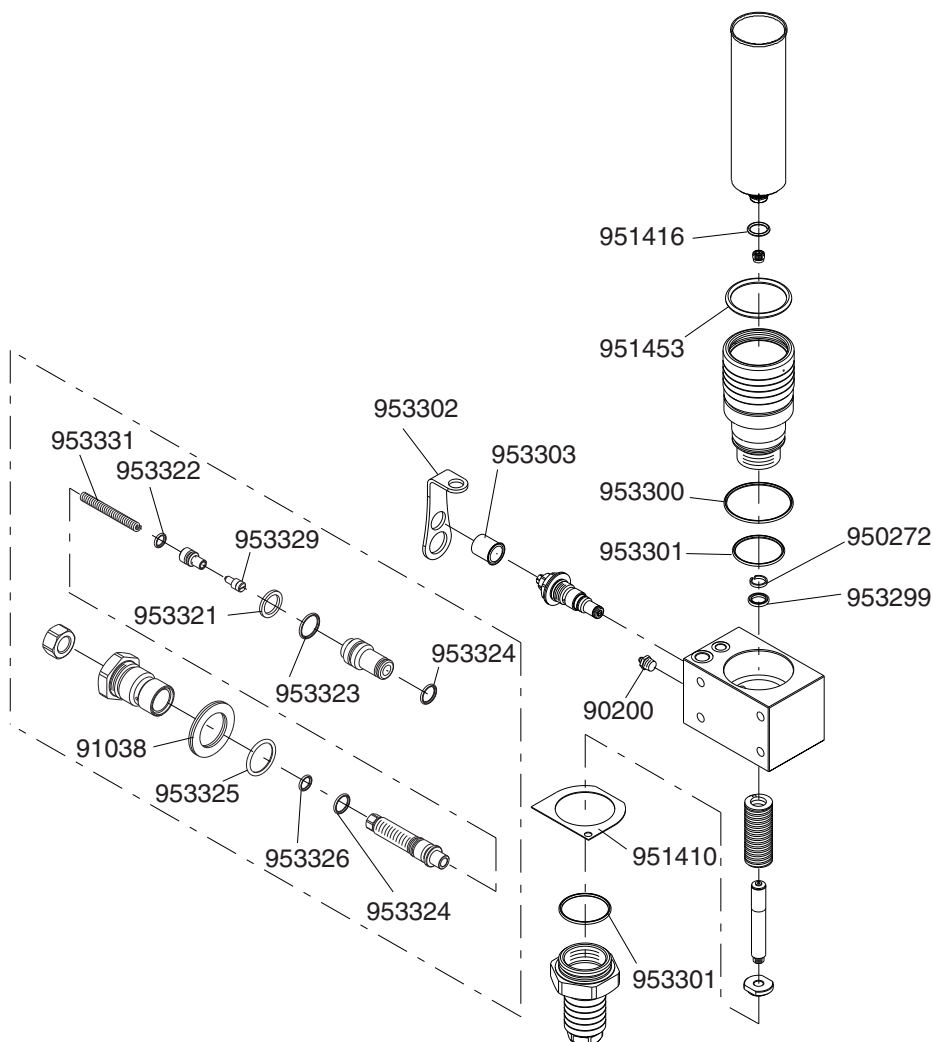
R061289

Item	Description	Part no.	Specification	Note	Qty
1	Greasing device RG541 (incl. parts 2-21)	953344			1
2	Doser (incl. parts 2.1-2.14)	173573			1
2.1	Plug	173574			1
2.2	Nut	953330	M12x1 DIN 934		1
2.3	Lock washer	91038	M24 NORD-LOCK	*	1
2.4	O-ring	953325	D21	*	1
2.5	Adjusting screw	953317			1
2.6	O-ring	953326	D8	*	1
2.7	O-ring	953324	D11	*	2
2.8	Spring	953331		*	1
2.9	Piston	173576			1
2.10	O-ring	953322	D7	*	1
2.11	Piston	953329		*	1
2.12	Body	173575			1

Item	Description	Part no.	Specification	Note	Qty
2.13	O-ring	953323	D15	*	1
2.14	Shim plate	953321		*	1
3	Grease nipple	90200	BSP 1/4	*	1
4	Plug	953303		*	1
5	Locking plate	953302			1
6	Body	953310			1
7	Cartridge holder	953309			1
8	Check valve	951767			1
9	O-ring	951416	D19	*	1
10	O-ring	951453	D62	*	1
11	O-ring	953300	D71	*	1
12	O-ring	953301	D52	*	2
13	Guide ring	950272		*	1
14	Seal	953299		*	1
15	Spring housing	953308			1
16	Spring	950257			1
17	Piston	953307			1
18	Nut	953306			1
19	Lock plate	951410		*	1
20	Hex. socket screw	951421	M8x10-8.8 ISO 4762	*	1
21	Connector	951294	BSPP 1/4		3
kit	Seal set for greasing device	953385			1
	*) Are included in seal set for greasing device				

22. SERVICE KIT FOR GREASING DEVICE RG540 SERIES

Service kit 953385

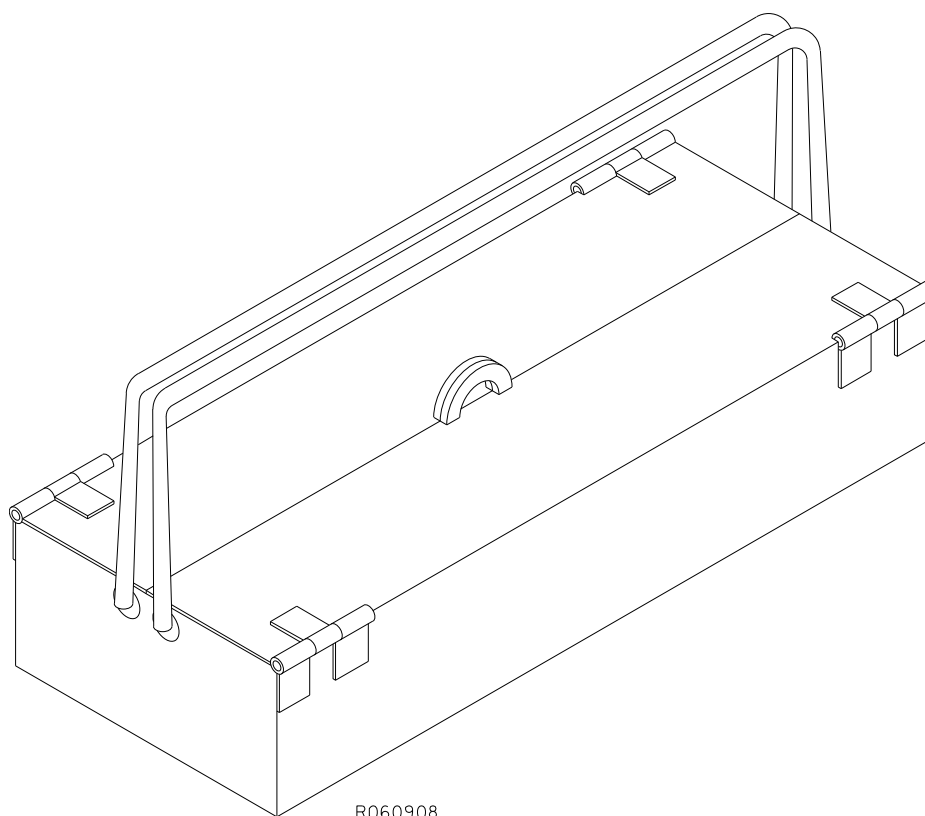


This summary only indicates the position of the seals. It must NOT be used as assembly instruction. Read the manual.

R061071

Item	Description	Part no.	Specification	Note	Qty
Kit	Service kit for greasing device (incl. parts 1-19)	953385			1
1	Lock plate	951410			1
2	Plug	953303			2
3	Guide ring	950272			1
4	Seal	953299			1
5	O-ring	953300	D71		1
6	O-ring	951453	D62		1
7	O-ring	953301	D52		2
8	O-ring	951416	D19		1
9	O-ring	953326	D8		2
10	O-ring	953325	D21		2
11	O-ring	953324	D11		4
12	O-ring	953323	D15		2
13	O-ring	953322	D7		2
14	Shim plate	953321			2
15	Spring	953331			2
16	Piston	953329			2
17	Lock washer	91038	M24 NORD-LOCK		2
18	Grease nipple	90200	R1/4		2
19	Locking plate	953302			2
	Service kit for greasing device is not included in the hammers seal set.				

23. TOOL BOX



Item	Description	Part no.	Specification	Note	Qty
Kit9	Tool box kit 9 (incl. parts 1-31)	952646			1
1	Tool box	90665			1
3	Grease gun	952640			1
5	Tool grease	902045			2
8	Screwdriver		6x150		1
9	Hammer		2 kg		1
10	Combination spanner		11		1
11	Combination spanner		13		1
12	Open-end spanner		24		1
28	Assembling screw	952539	M16x100-8.8 ISO 8677		1
31	Assembling screw	954194	M12x150-8.8 ISO 8677		1

[illegible]



Sandvik Mining and Construction Oy, Breakers Lahti
Taivalkatu 8, P.O. Box 165, FI-15101 Lahti, Finland
Phone Int. +358 205 44 151, Telefax Int. +358 205 44 150
www.rammer.com