

Original instructions

**Rammer**<sup>®</sup>

ENG 2/14

**PARTS MANUAL**  
**PM333SENG.214**

**HYDRAULIC HAMMER**  
**RAMMER 333**

**STD**

**Serial No.**

**333A0005-UP**

**R A M M E R H I T S H A R D E R**

---

## TABLE OF CONTENTS

1. Housing unit . . . . .	4
2. Valve body and distributor . . . . .	6
3. Accumulator . . . . .	8
4. Body parts. . . . .	9
5. Lower tool bushing . . . . .	10
6. Tool . . . . .	11
7. Seal set . . . . .	12
8. Service kit . . . . .	14

---

### GENUINE RAMMER SPARE PARTS

Rammer genuine spare parts are designed and manufactured by using the latest technological knowledge and engineering skills. Rammer spare parts are made of the best available materials with the most advanced manufacturing techniques.

It is important that you use only genuine Rammer spare parts, to ensure easy operation, maintenance and repair of the product. Please note that eventual warranty claims will be handled only if you have used genuine Rammer parts in your Rammer.

### LOCATION OF THE SERIAL NUMBER

It's important to make correct reference to the serial number of the product when ordering spare parts. Identification of serial number is the only proper means of maintaining and identifying parts for a specific product. The location of equipment serial number is pointed in "Operation and maintenance" manual.

### SPARE PART ORDERS

Quick spare part deliveries are secured by exact orders.

#### Required information:

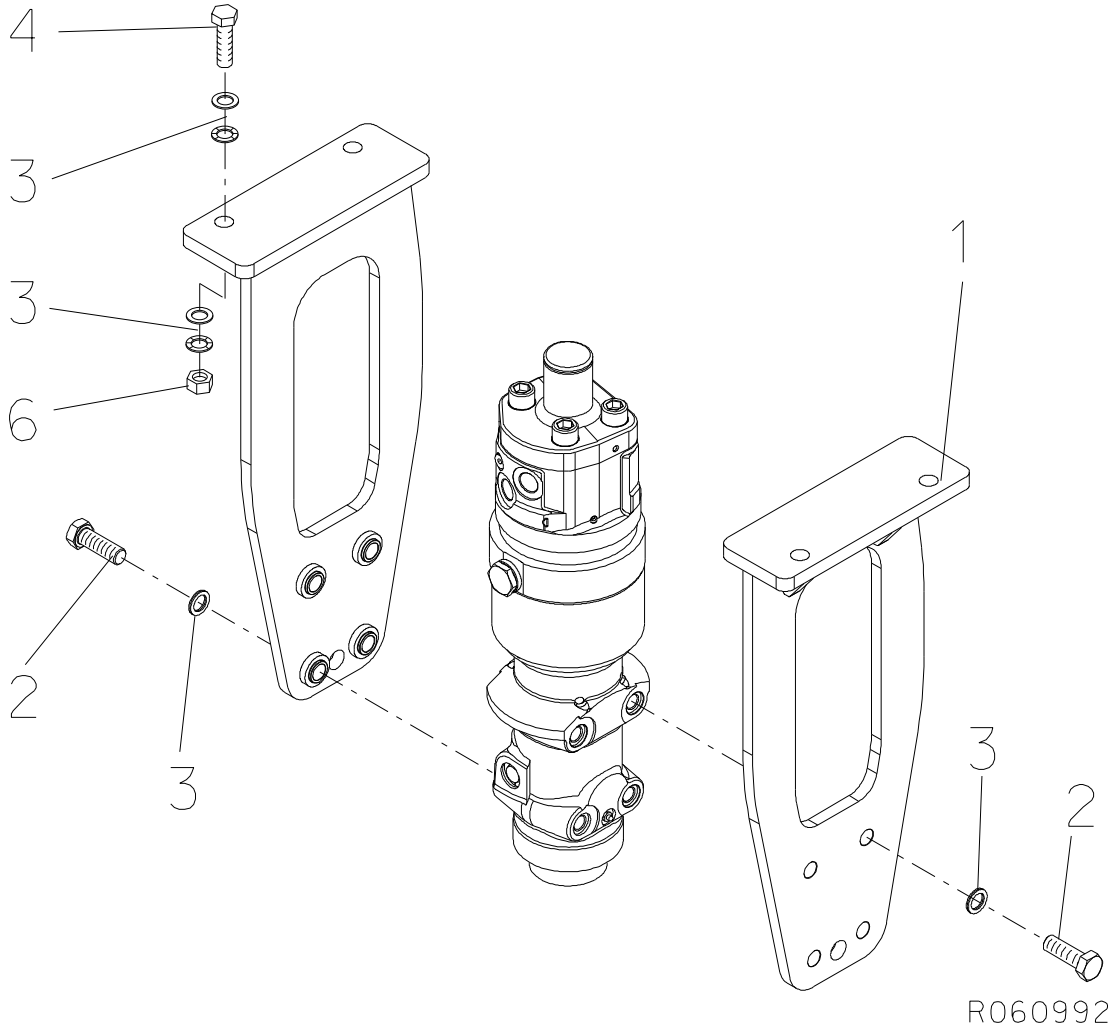
- Name of customer and contact person
  - Order number (when available)
  - Delivery address
  - Mode of delivery (air mail etc.)
  - Required delivery date
  - Invoicing address
  - Model and serial number of the product
  - Name, number and required amount of spare parts
-

---

# PARTS

---

1. HOUSING UNIT

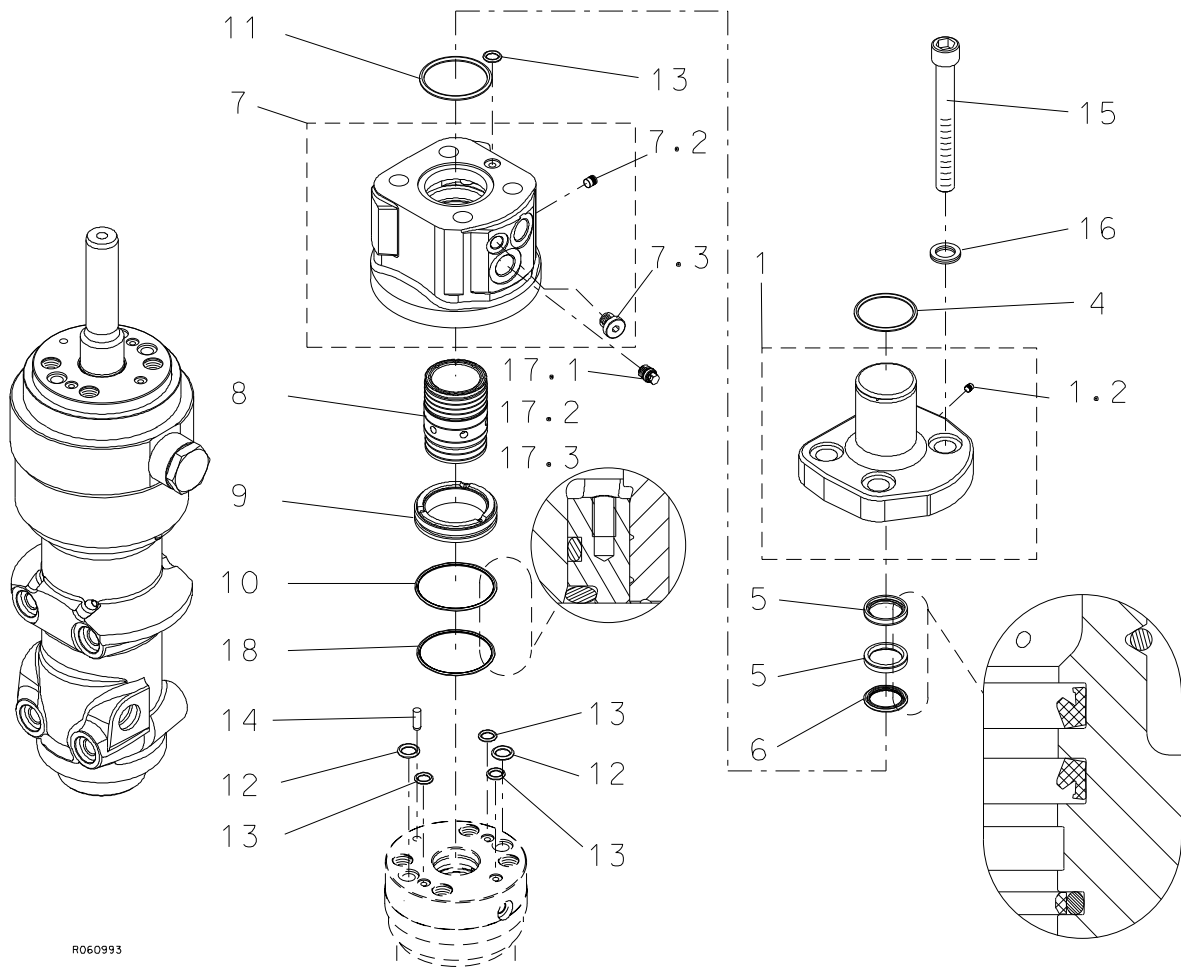


---

Item	Description	Part no.	Specification	Note	Qty
1	Housing plates	165451			1
2	Hex. screw	951615	M20x60-10.9 ISO 4017		8
3	Lock washer	91010	M20 NORD-LOCK		16
4	Hex. screw	91027	M20x70-8.8 ISO 4014		4
6	Nut	91017	M20-8 ISO 4032		4
20	Label set (incl. part 21)	170449			1
21	Safety label set	169400			1

---

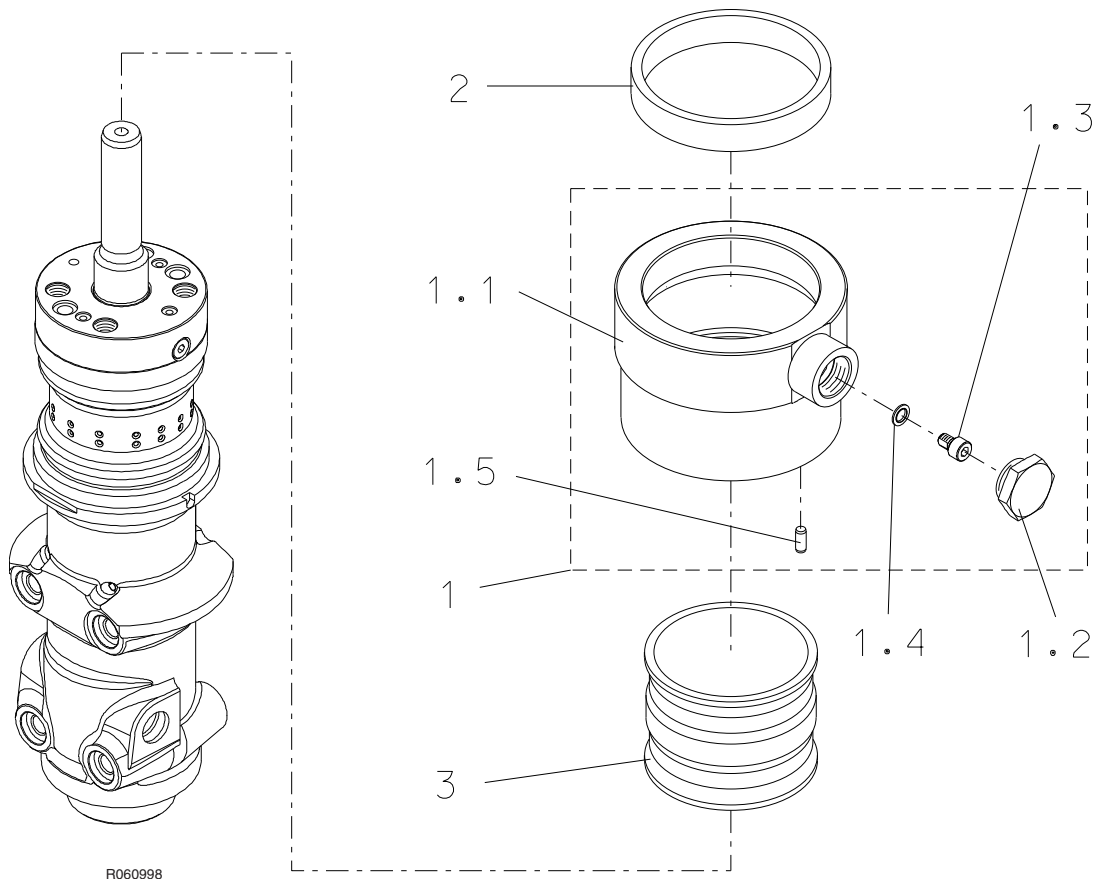
## 2. VALVE BODY AND DISTRIBUTOR



R060993

Item	Description	Part no.	Specification	Note	Qty
1	Cover (incl. part 1.2)	158511			1
1.2	Plug	915028			1
4	O-ring	90044	D50	*	1
5	Seal	951623		*	2
6	Seal	156206		*	1
7	Valve body (incl. parts 7.2-7.3)	159340			1
7.2	Plug	915028			1
7.3	Flange plug	90403	R1/4		1
8	Distributor	158921			1
9	Steering ring	158924			1
10	O-ring	952237	D76	*	1
11	O-ring	94045	D70	*	1
12	O-ring	901135	D17	*	2
13	O-ring	901199	D9	*	4
14	Parallel pin	90371	6m6x18 ISO 8734		1
15	Hex. socket screw	951613	M20x160-10.9 ISO 4762		4
16	Lock washer	91010	M20 NORD-LOCK		4
17.1	Nozzle kit 1	166400	Incl. nozzles D2.8, D3.0, D3,2 and D0		1
17.2	Nozzle kit 2	166392	Incl. nozzles D3.4, D3.6, D3.8, D4.0 and D0		1
17.3	Nozzle kit 3	166407	Incl. nozzles D4.2, D4.4, D4.6 and D0		1
18	O-ring	90030	D75	*	1
	*) Are included in seal set				

### 3. ACCUMULATOR

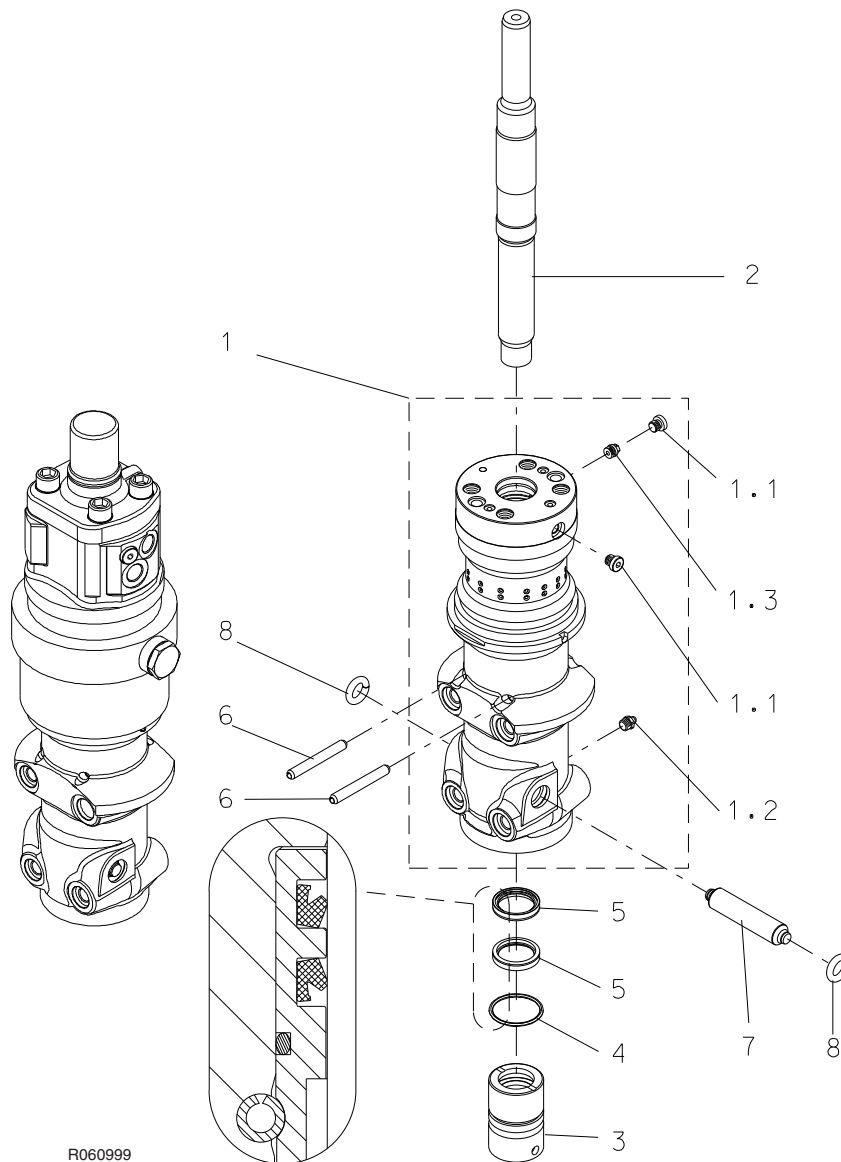


R060998

Item	Description	Part no.	Specification	Note	Qty
1	Accumulator (incl. parts 1.1-1.5)	159889			1
1.1	Body	155376			1
1.2	Shield plug	400300			1
1.3	Filling plug	42074			1
1.4	Usit-ring	90056	8-13.9-1	*	1
1.5	Split pin	90327	6x17 ISO 8750		1
2	Support ring	157619			1
3	Membrane	113062			1
	*) Are included in seal set				

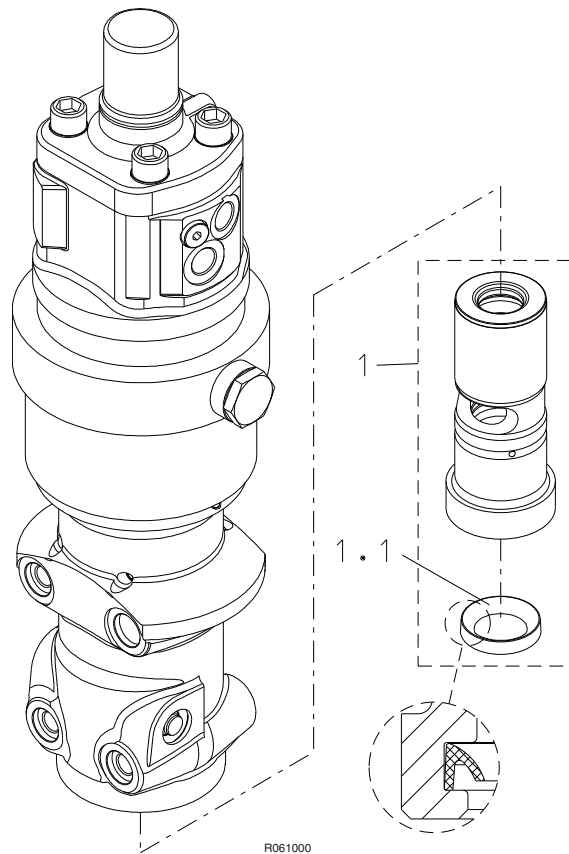


## 4. BODY PARTS



Item	Description	Part no.	Specification	Note	Qty
1	Cylinder (incl. parts 1.1-1.3)	158920			1
1.1	Flange plug	93203	R1/8		2
1.2	Grease nipple	90201	R1/8		1
1.3	Nozzle	101466			1
2	Piston	158922			1
3	Seal carrier	155369			1
4	O-ring	90038	D57	*	1
5	Seal	950059		*	2
6	Split pin	90338	8x80 ISO 8752		2
7	Tool retaining pin	156445			1
8	Rubber ring	155587		*	2
	*) Are included in seal set				

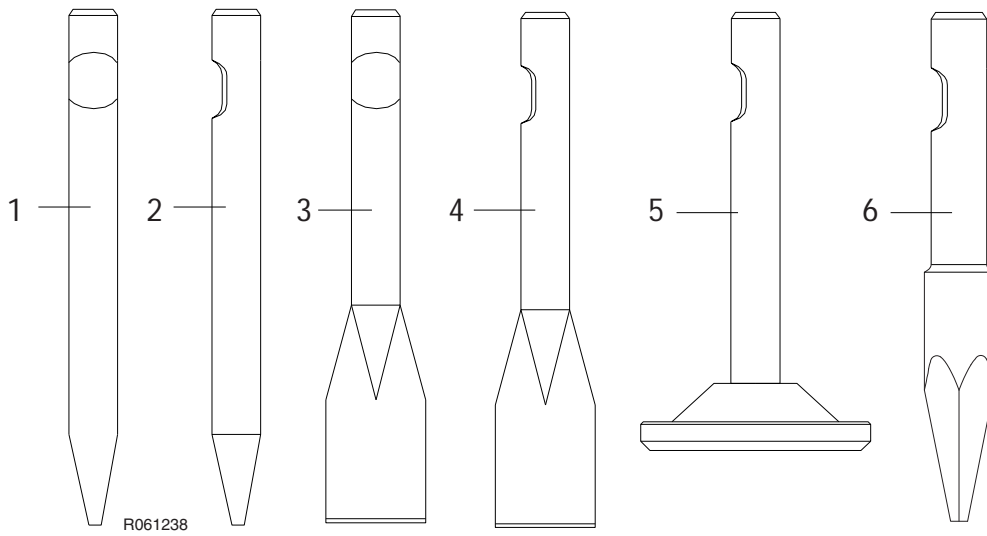
## 5. LOWER TOOL BUSHING



R061000

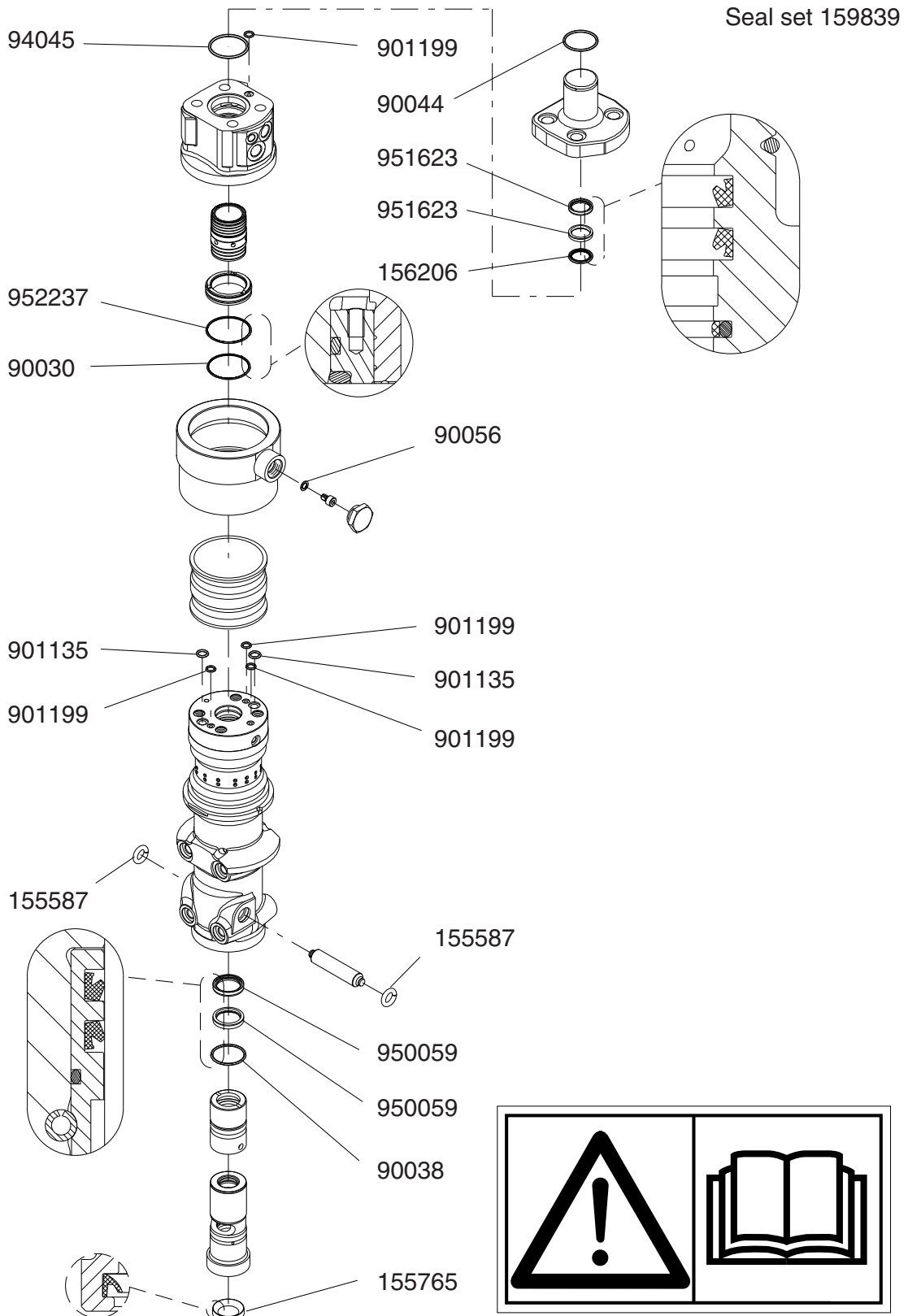
Item	Description	Part no.	Specification	Note	Qty
1	Lower tool bushing (incl. part 1.1)	156275			1
1.1	Seal	155765		*	1
	*) Are included in seal set				

## 6. TOOL



Item	Description	Part no.	Specification	Note	Qty
1	Chisel	BH801	L = 490 mm, W = 7.1 kg, D = 50 mm		1
2	Moil point	BH803	L = 490 mm, W = 6.8 kg, D = 50 mm		1
3	Spade, parallel to boom	BH805	L = 490 mm, W = 6.8 kg, Width = 115 mm		1
4	Spade, transverse to boom	BH806	L = 490 mm, W = 6.8 kg, Width = 115 mm		1
5	Compacting plate	BH807	L = 437 mm, W = 11.7 kg, Plate D = 180 mm		1
6	Pyramid	BH803K3	L = 490 mm, W = 7.2 kg, D = 50 / 65 mm		1

## 7. SEAL SET

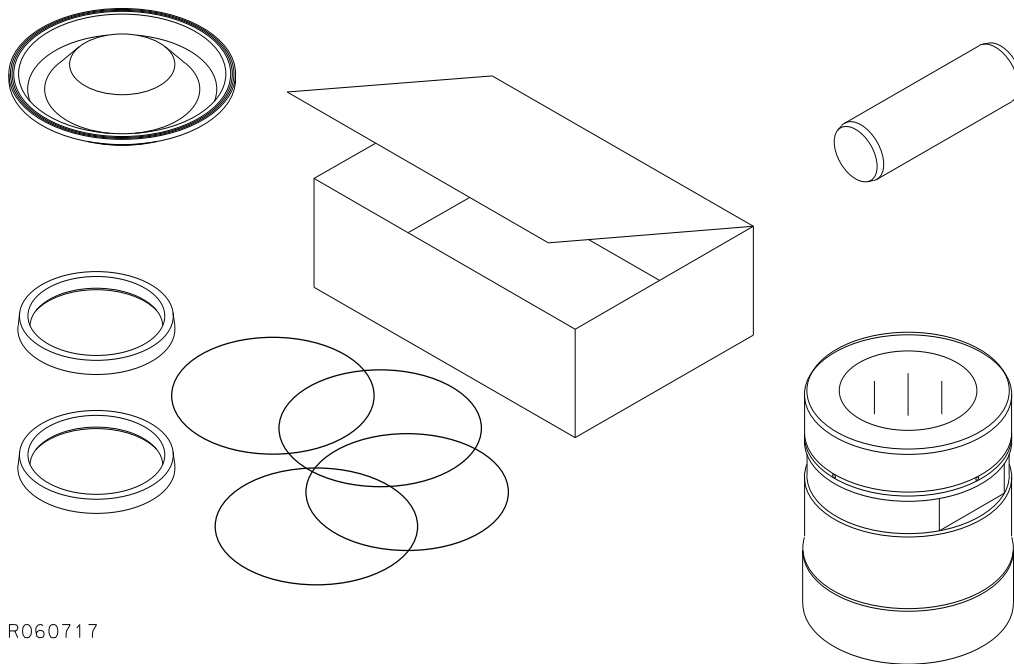


This summary only indicates the position of the seals. It must NOT be used as assembly instruction. Read the manual.

R060861

Item	Description	Part no.	Specification	Note	Qty
Kit	Seal set (incl. parts 1-13)	159839			1
1	O-ring	90038	D57		1
2	Seal	950059			2
3	O-ring	90044	D50		1
4	Seal	951623			2
5	Seal	156206			1
6	O-ring	952237	D76		1
7	O-ring	94045	D70		1
8	O-ring	901135	D17		2
9	O-ring	901199	D9		4
10	O-ring	90030	D75		1
11	Usit-ring	90056	8-13.9-1		1
12	Seal	155765			1
13	Rubber ring	155587			2

## 8. SERVICE KIT



R060717

Item	Description	Part no.	Specification	Note	Qty
Kit	Servicekit (incl. parts 1 - 4)	K1BH80			1
1	Membrane	113062			1
2	Tool retaining pin	156445			1
3	Lower tool bushing	156275			1
4	Seal set	159839			1





Sandvik Mining and Construction Oy, Breakers Lahti  
Taivalkatu 8, P.O. Box 165, FI-15101 Lahti, Finland  
Phone Int. +358 205 44 151, Telefax Int. +358 205 44 150  
[www.rammer.com](http://www.rammer.com)