

PARTS MANUAL

PMS84ENG.002

HYDRAULIC HAMMER

RAMMER S 84

RAMMER S 84 W

Serial No.

84A04XXX-UP

84A04XXX/A02-UP

84W02XXX/W01-UP

84AXA0005-UP

84AAA0005-UP

TABLE OF CONTENTS

1. Housing unit S 84	4
2. Accumulator S 84	6
3. Main valve S 84	7
4. Check valve S 84	8
5. Pressure control valve S 84	10
6. Tie rods S 84	12
7. Body parts S 84	14
8. Front head S 84	16
9. Lower tool bushing S 84	18
10. Lower tool bushing S 84	19
11. Seal set S 84	20
12. S 84 W-model parts	21

GENUINE RAMMER SPARE PARTS

Rammer genuine spare parts are designed and manufactured by using the latest technological knowledge and engineering skills. Rammer spare parts are made of the best available materials with the most advanced manufacturing techniques.

It is important that you use only genuine Rammer spare parts, to ensure easy operation, maintenance and repair of the product. Please note that eventual warranty claims will be handled only if you have used genuine Rammer parts in your Rammer.

LOCATION OF THE SERIAL NUMBER

It's important to make correct reference to the serial number of the product when ordering spare parts. Identification of serial number is the only proper means of maintaining and identifying parts for a specific product. The location of equipment serial number is pointed in "Operation and maintenance" manual.

SPARE PART ORDERS

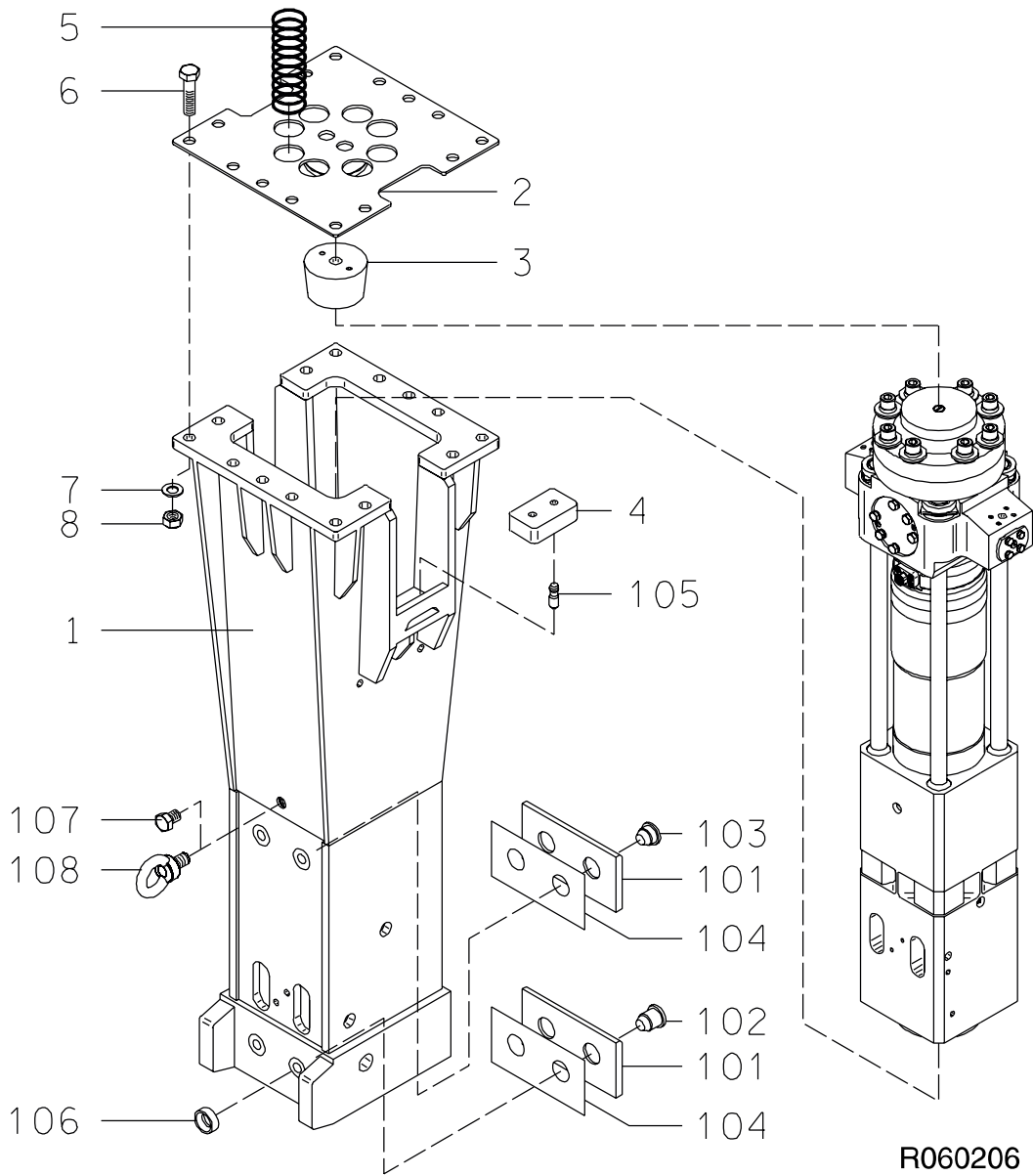
Quick spare part deliveries are secured by exact orders.

Required information:

- Name of customer and contact person
 - Order number (when available)
 - Delivery address
 - Mode of delivery (air mail etc.)
 - Required delivery date
 - Invoicing address
 - Model and serial number of the product
 - Name, number and required amount of spare parts
-

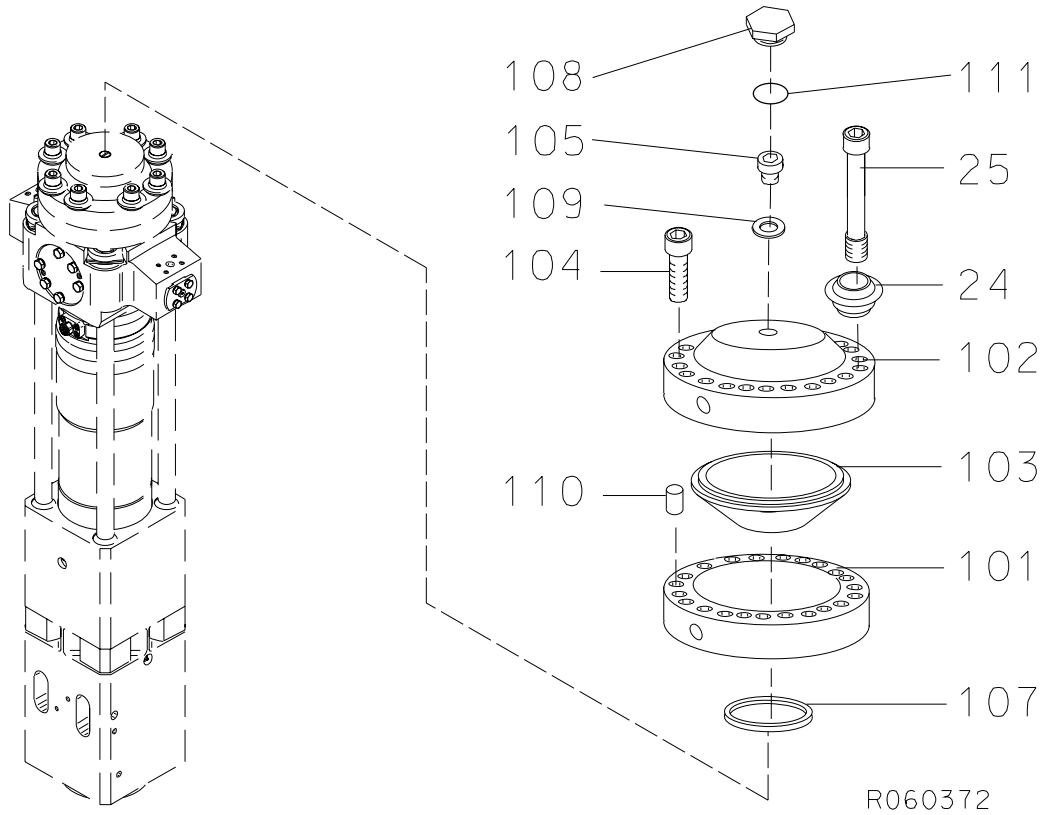
PARTS

1. HOUSING UNIT S 84



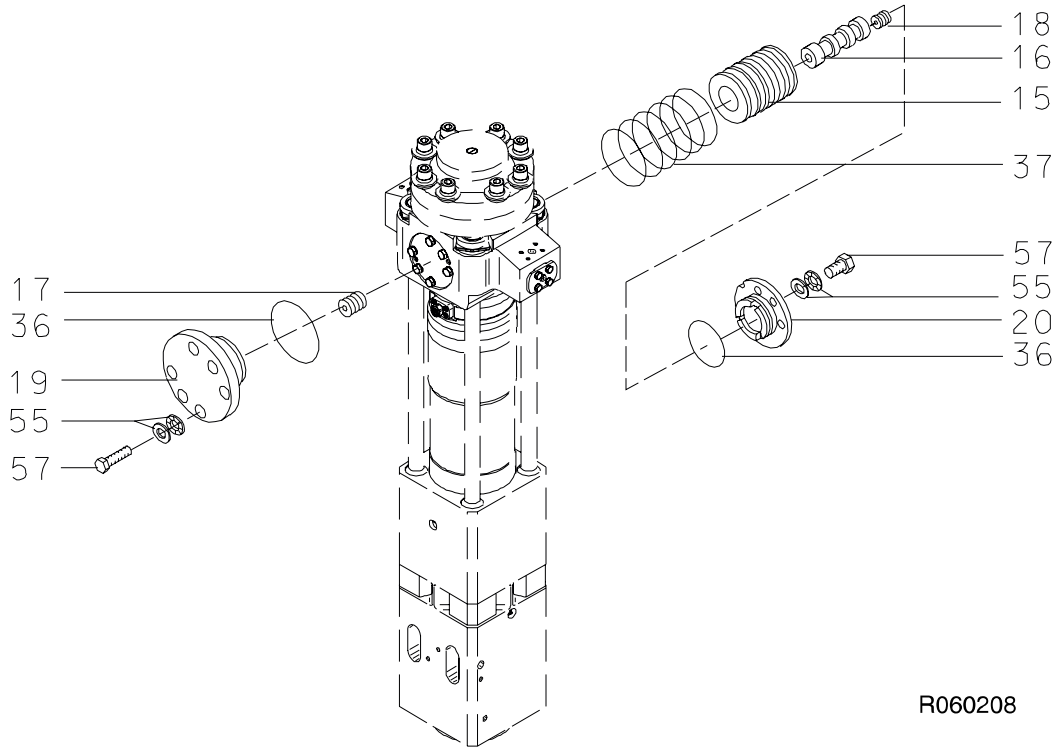
Item	Description	Part no.	Specification	Note	Qty
1	Housing (incl. parts 101-108)	10459			1
2	Spacer plate	30578			1
3	Buffer	30274			1
4	Pad	41131			2
5	Spring	40540			8
6	Hex. screw	90520	M36x140-8.8 DIN 931		14
7	Washer	90521	39 DIN 126		14
8	Lock nut	90519	M36-8 DIN 985		14
101	Wear plate	41104			4
102	Pin	41110			4
103	Pin	41112			4
104	Shim plate	41148			4
105	Pin	41109			4
106	Ring	41118			4
107	Hex. screw	900026	M30x40-8.8 DIN 933		1
108	Lifting eye	90705	M30 DIN 580		1
Kit	Label set	200231			1

2. ACCUMULATOR S 84



Item	Description	Part no.	Specification	Note	Qty
1	Accumulator (incl. parts 101-111)	30270			1
24	Washer	42078			8
25	Accumulator screw	30261			8
101	Accumulator bottom	10230			1
102	Accumulator cover	10231			1
103	Membrane	30269			1
104	Accumulator screw	40528			12
105	Filling plug	40368			1
107	Seal	40536	D144	*	1
108	Shield plug	400300			1
109	Usit-ring	90056	U8.7-14-1	*	1
110	Parallel pin	90304	10m6x24 DIN 6325		2
111	O-ring	910006	D23	*	1
	*) Are included in seal set				

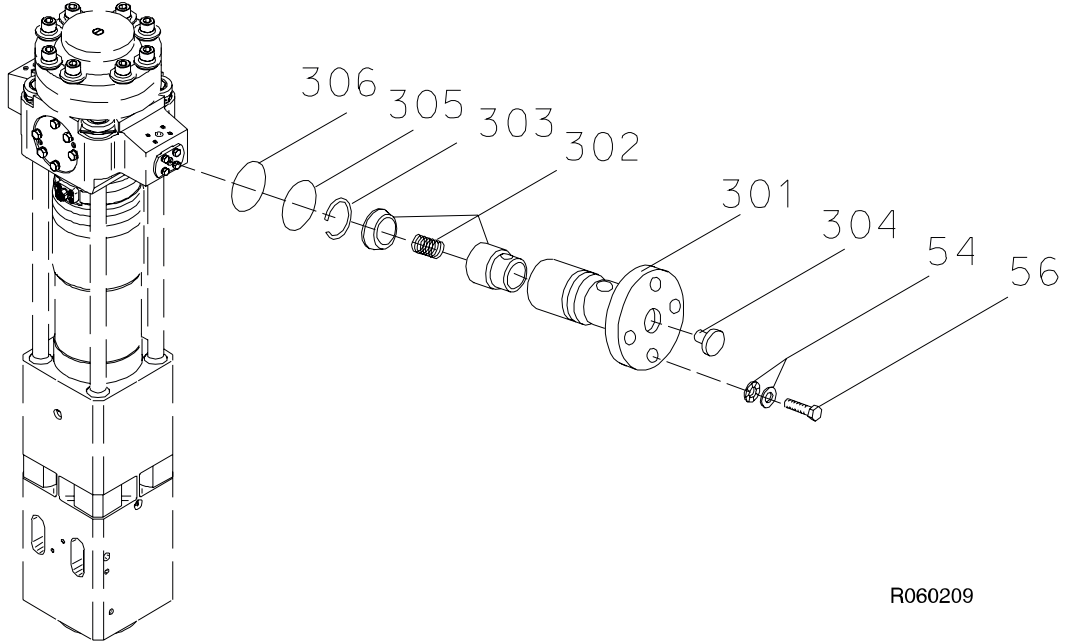
3. MAIN VALVE S 84



R060208

Item	Description	Part no.	Specification	Note	Qty
15	Main valve bushing	20183			1
16	Main spool	30267			1
17	Spool	40524			1
18	Spool	40523			1
19	Cover	30260			1
20	Cover	30295			1
36	O-ring	90032	D120	*	2
37	O-ring	90033	D125	*	6
55	Lock washer	91010	M20 NORD-LOCK		12
57	Hex. screw	90518	M20x1.5x45-10.9		12
	*) Are included in seal set				

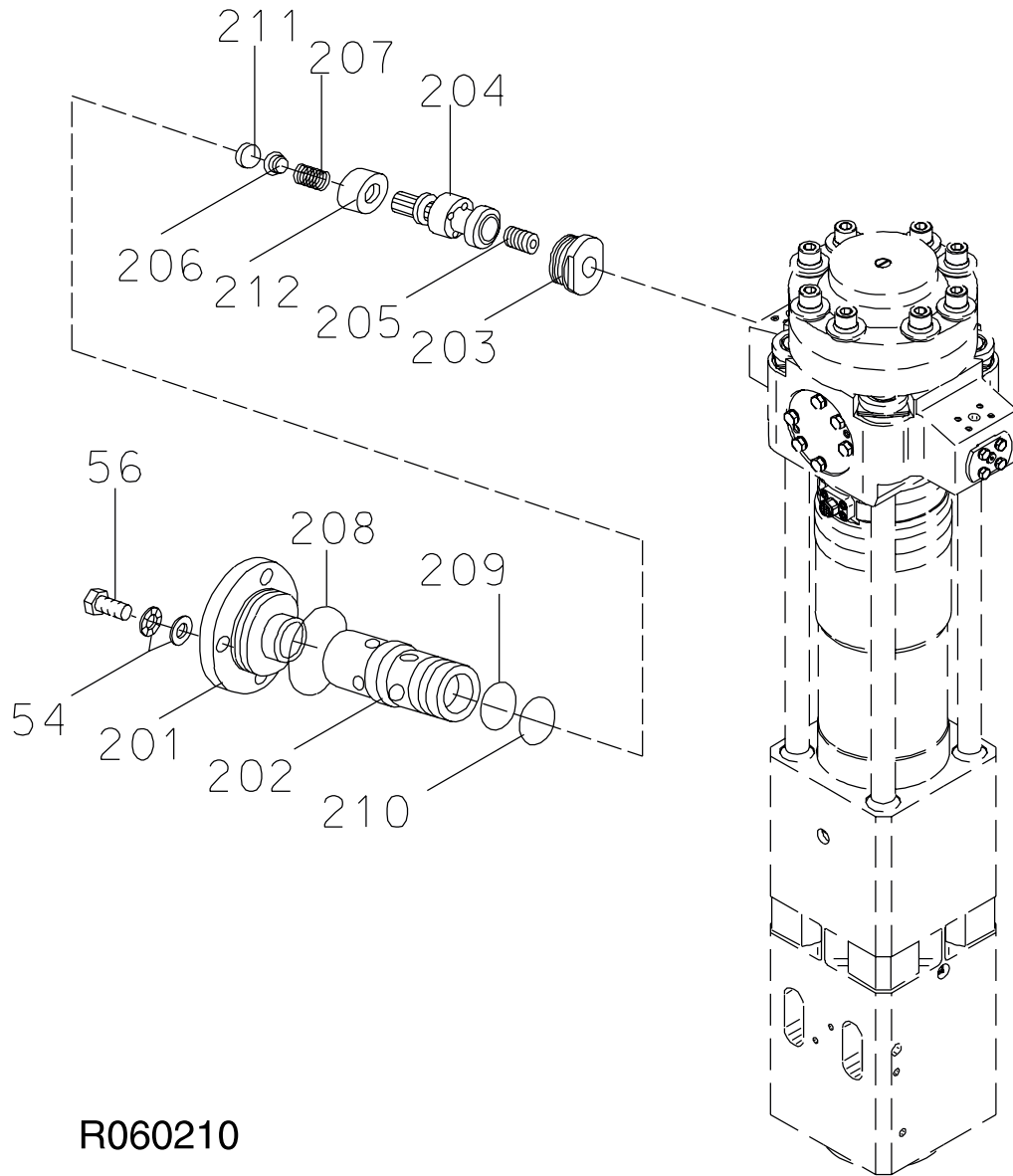
4. CHECK VALVE S 84



R060209

Item	Description	Part no.	Specification	Note	Qty
3	Check valve (incl. parts 301-306, 54 and 56)	40587			1
54	Lock washer	90597	M16 NORD-LOCK		4
56	Hex. screw	90517	M16x35-8.8 DIN 933		4
301	Check valve housing	30272			1
302	Check valve	90432			1
303	Spring ring	90310	B38 DIN 7993		1
304	Flange plug	90403	R1/4		1
305	O-ring	90031	D46	*	1
306	O-ring	90007	D44	*	1
	*) Are included in seal set				

5. PRESSURE CONTROL VALVE S 84

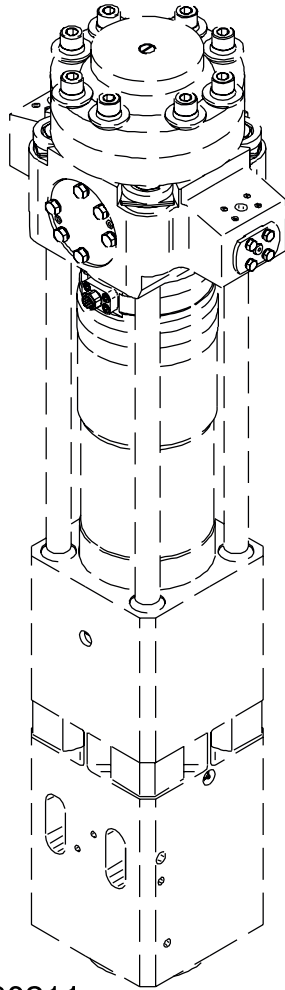


R060210

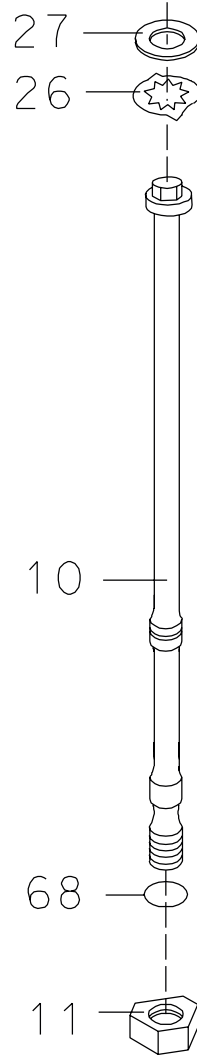
PRESSURE CONTROL VALVE S 84

Item	Description	Part no.	Specification	Note	Qty
2	Pressure control valve (incl. parts 201-212)	31691			1
54	Lock washer	90597	M16 NORD-LOCK		4
56	Hex. screw	90517	M16x35-8.8 DIN 933		4
201	Cover	30580			1
202	Valve housing	30268			1
203	Guide	40527			1
204	Spool	31430			1
205	Spool	40522			1
206	Spring guide	40525			1
207	Spring	90118			1
208	O-ring	90030	D75	*	1
209	Seal	40533	D65	*	1
210	Seal	40534	D55	*	1
211	Shim plate	42361	S=1.5		1
211	Shim plate	42362	S=1.25		1
211	Shim plate	42363	S=0.9		1
212	Spring support	42099			1
	*) Are included in seal set				

6. TIE RODS S 84

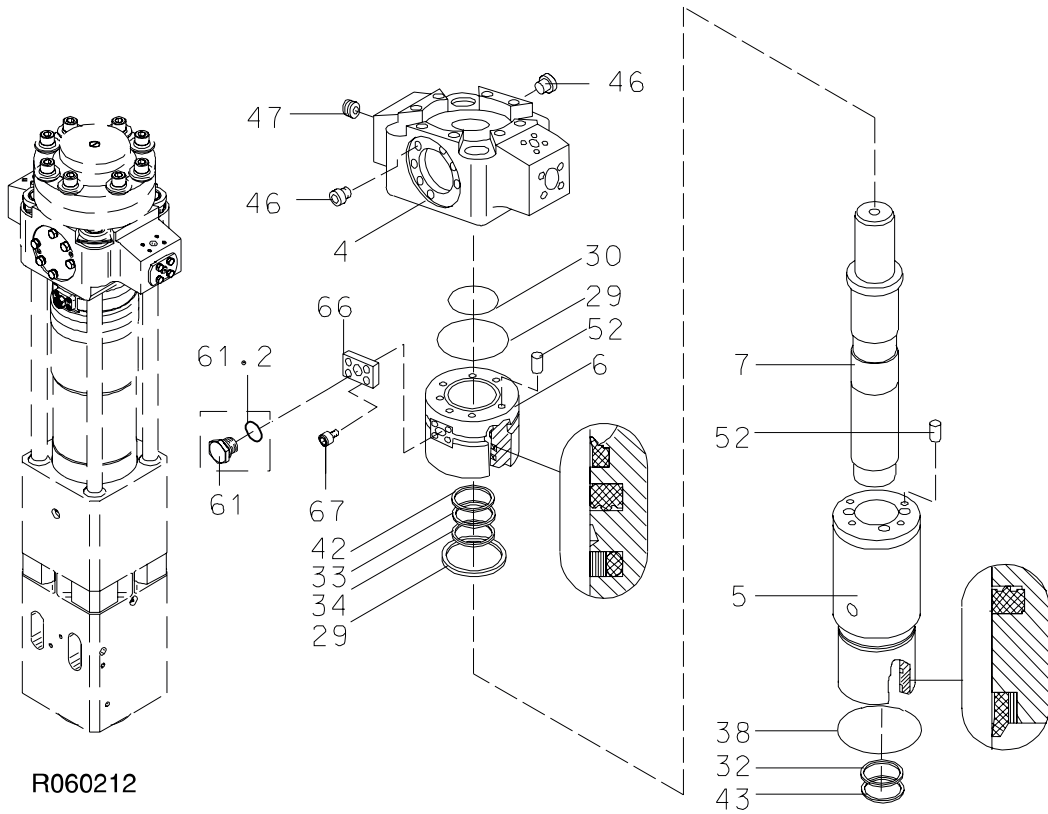


R060211



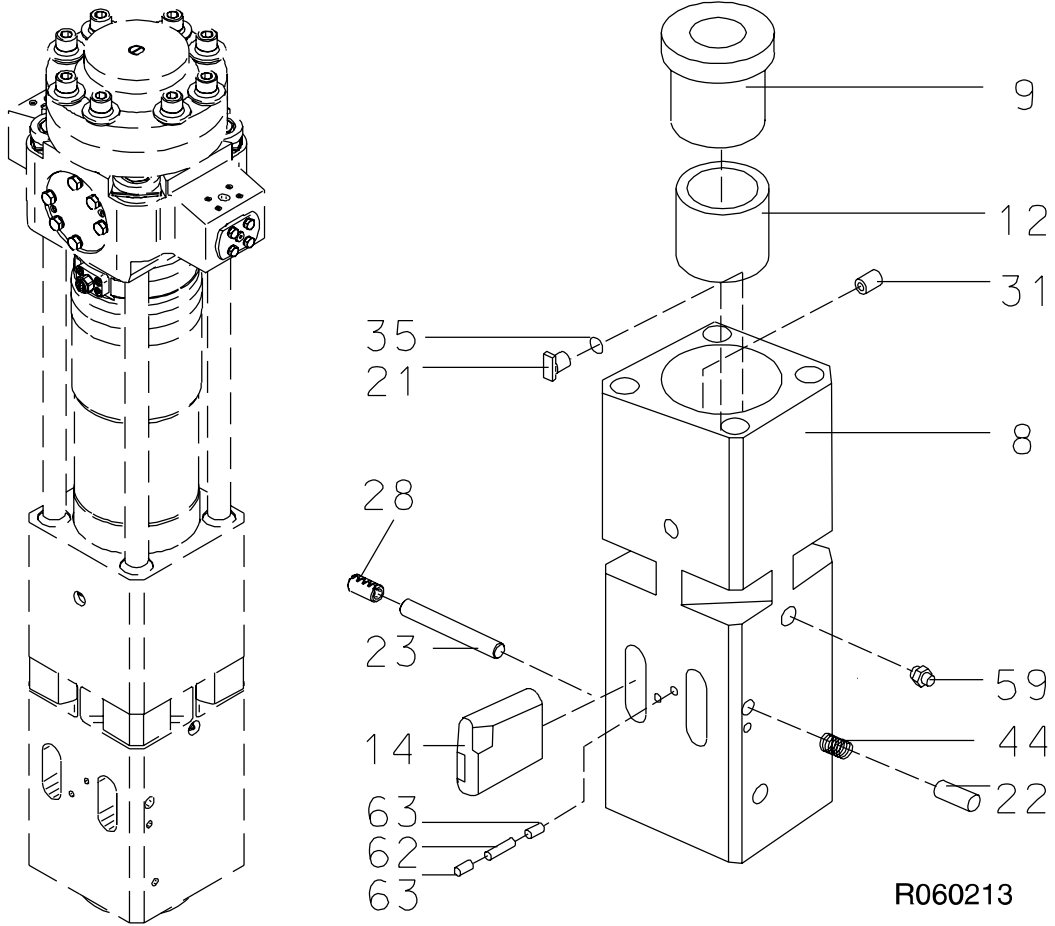
Item	Description	Part no.	Specification	Note	Qty
10	Tie rod	30608			4
11	Tie rod nut	300291			4
26	Lock plate	41090			8
27	Rubber ring	40586			4
68	O-ring	901025	D54	*	4
	*) Are included in seal set				

7. BODY PARTS S 84



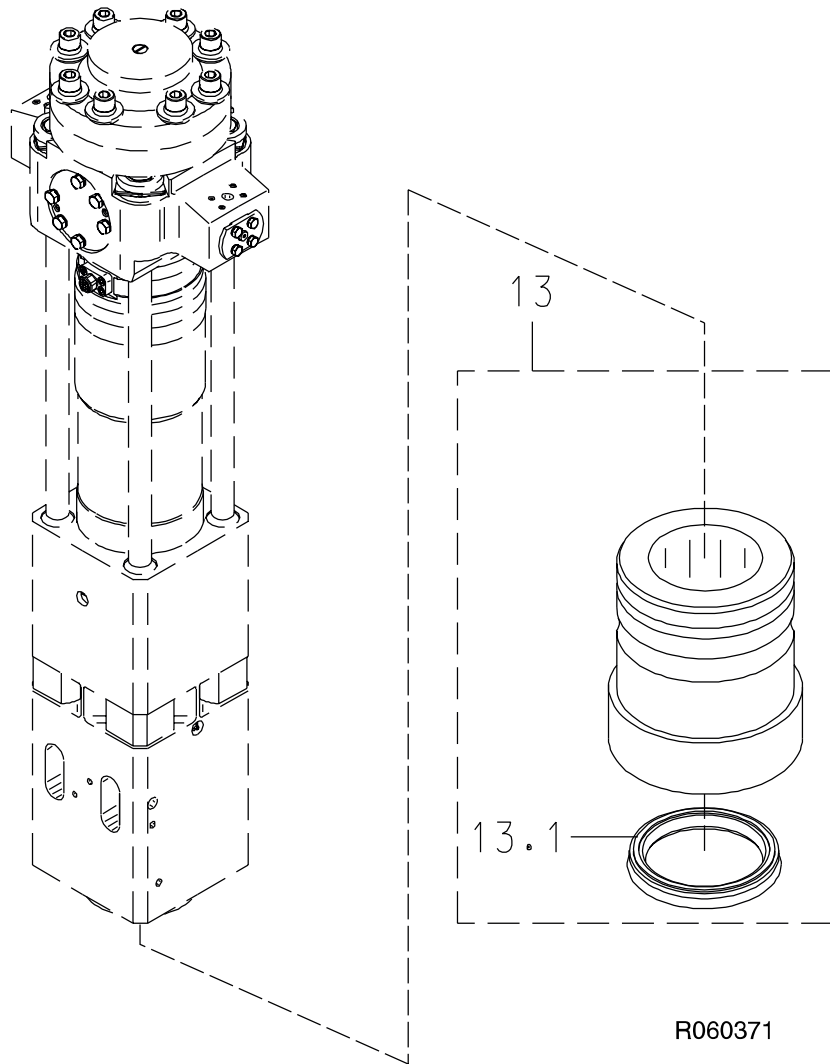
Item	Description	Part no.	Specification	Note	Qty
4	Valve body	10409			1
5	Cylinder	10461			1
6	Seal carrier	10510			1
7	Piston	10455			1
29	Seal	41140	D239	*	2
30	Seal	41141	D143	*	1
32	Seal	90073	D145	*	1
33	Seal	90075	D130	*	1
34	Seal	41192	D130	*	1
38	O-ring	90003	D239	*	1
42	Wiper	41194	D130	*	1
43	Wiper	90072	D145	*	1
46	Flange plug	90410	R1		2
47	Flange plug	90424	R1/2		1
52	Parallel pin	90317	16m6x50 DIN 6325		2
61	Breather (incl. part 61.2)	101700			1
61.2	O-ring	901173	D27	*	1
66	Flange	400485			1
67	Hex. socket screw	90555	M10x25-8.8 DIN 912		4
	*) Are included in seal set				

8. FRONT HEAD S 84



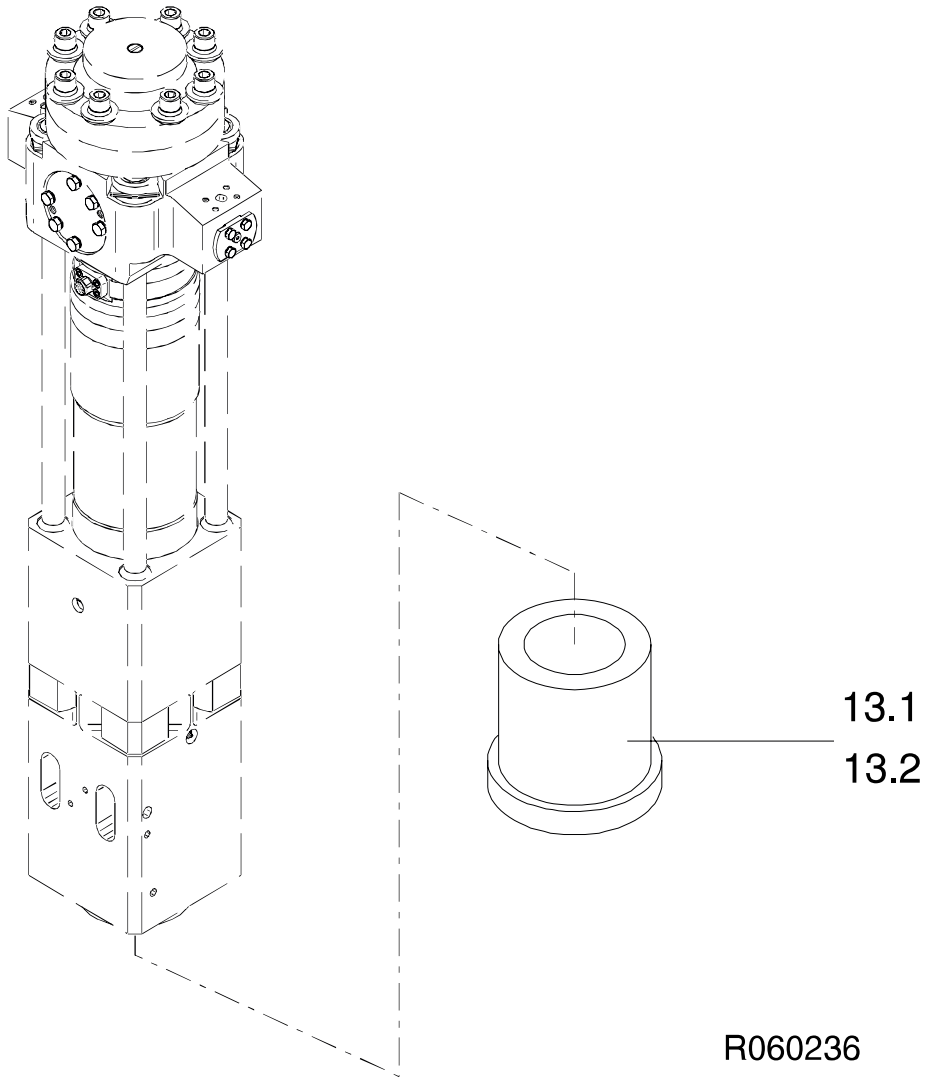
Item	Description	Part no.	Specification	Note	Qty
8	Front head	10745			1
9	Thrust ring	20623			1
12	Upper tool bushing	30558			1
14	Tool retaining pin	41479			2
21	Wedge	40110			1
22	Retaining pin	41130	D26		2
23	Retaining pin	40503	D40		1
28	Split pin	901134	Connex S 40x70		1
31	Plug	40116			1
35	O-ring	90000	D24	*	1
44	Spring	90110	D25x64		2
59	Grease nipple	90200	R1/4		1
62	Retaining pin	41325	D10		2
63	Split pin	90319	10x16 DIN 1481		4
	*) Are included in seal set				

9. LOWER TOOL BUSHING S 84



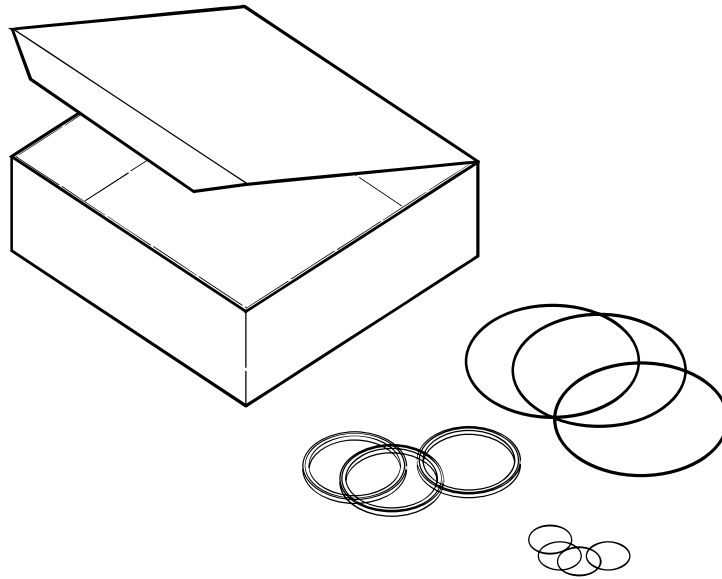
Item	Description	Part no.	Specification	Note	Qty
13	Lower tool bushing (incl. part 13.1)	102158			1
13.1	Seal	102322			1

10. LOWER TOOL BUSHING S 84



Item	Name	Part no.	Specification	Note	Qty
13.1	Lower tool bushing, hard	20319			1
13.2	Lower tool bushing, standard	20943			1

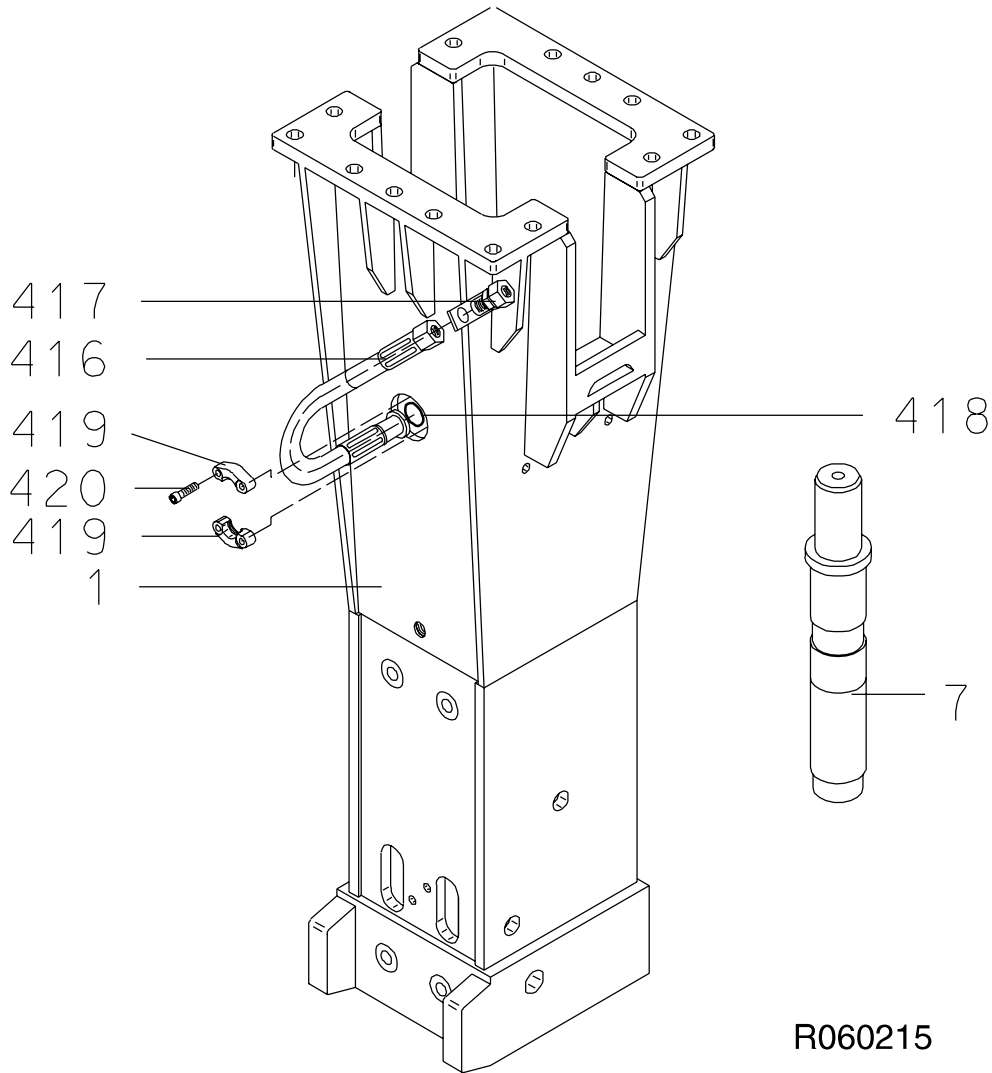
11. SEAL SET S 84



R060012

Item	Description	Part no.	Specification	Note	Qty
Kit	Seal set (incl. parts 1-24)	41241			1
1	Seal	41140	D239		2
2	Seal	41141	D143		1
3	Seal	90073	D145		1
4	Seal	90075	D130		1
5	Seal	41192	D130		1
6	O-ring	90000	D24		1
7	O-ring	90032	D120		2
8	O-ring	90033	D125		6
9	O-ring	90003	D239		1
11	Wiper	41194	D130		1
12	Wiper	90072	D145		1
13	O-ring	901173	D27		1
14	O-ring	901025	D54		4
15	Seal	40536	D144		1
16	Usit-ring	90056	U8.7-14-1		1
17	O-ring	90030	D75		1
18	Seal	40533	D65		1
19	Seal	40534	D55		1
20	O-ring	90031	D46		1
21	O-ring	90007	D44		1
24	O-ring	910006	D23		1

12. S 84 W-MODEL PARTS



Item	Description	Part no.	Specification	Note	Qty
1	Housing	30714			1
7	Piston	10509			1
416	Hose	93629	5723-12-12/HI-78-12/5714-25-12 L=680		1
417	Coupling	93042	SR25 DIN 2353 St-GT		1
418	O-ring	90008	D25.0x3.53 90Sh A	*	1
419	Split flange	90404	251-12 3000 psi		2
420	Hex. socket screw	90504	M10x30-8.8 DIN 912		4
	*) Are included in seal set				

SANDVIK TAMROCK CORP.
Breakers Lahti
Taivalkatu 8, P.O. Box 165, FIN-15101 Lahti, Finland
Phone Int. +358 205 44 161, Telefax Int. +358 205 44 160
Internet <http://www.rammer.com>

87-40-14014-27-160-308
87-40-14014-36-136-343